

PRODUCT CODE: KIT015LQFCGP

DIMENSIONS: 34MM (w) X 96.55MM (h)

DOC TYPE: TECHNICAL DRAWING

MATERIAL: GLASS

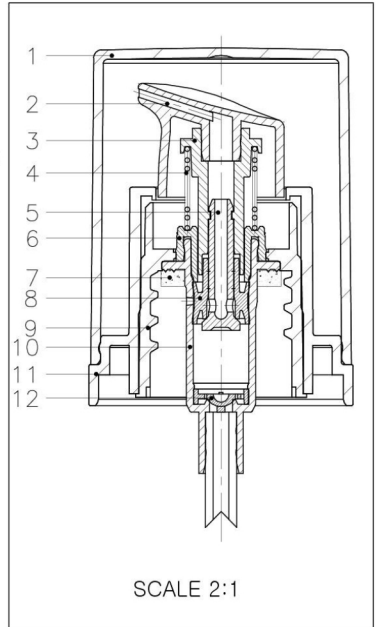
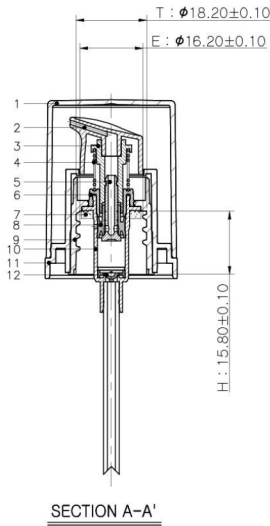
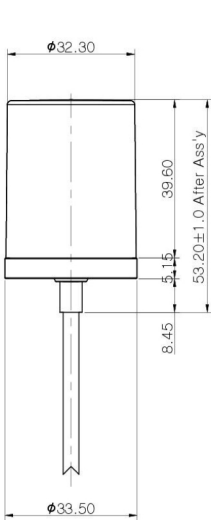
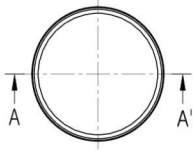
CAPACITY: 15ML

COLOR: CLEAR

DATE: 2/22/19

instockpack.

These drawings and specifications are the property of Instockpack and shall not be copied, reproduced, or used in any manner without the prior consent of Instockpack.



PRODUCT: PUMP

SHOULDER: ABS SHOULDER COLOR: GLOSS BLACK

ACTUATOR: PP ACTUATOR COLOR: GLOSS BLACK

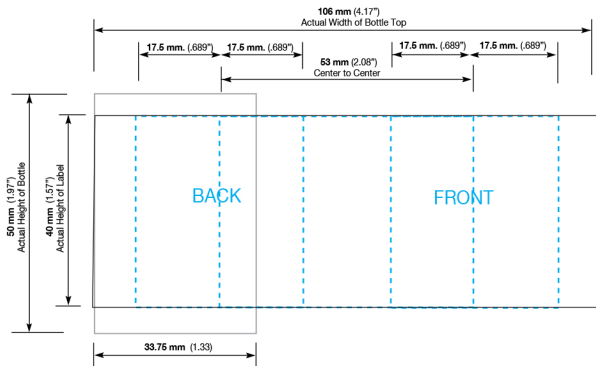
VISIBLE DIP TUBE LENGTH: 34MM

OVER CAP: PETG OVER CAP COLOR: GLOSS BLACK

DOC TYPE: TECHNICAL DRAWING DATE: 2/22/19



These drawings and specifications are the property of Instockpack and shall not be copied, reproduced, or used in any manner without the prior consent of Instockpack.



PRODUCT CODE: KIT015LQFCGP

15ml Liquid Foundation Clear Glass Bottle w/ Pump

DIE LINE TYPE: Silk Screen

DATE: 06-JUN-2019

GENERAL INSTRUCTIONS:

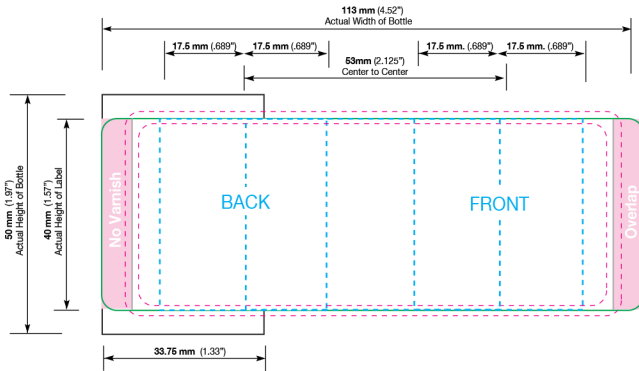
Please include a PDF, list of colors, and convert text to outlines when submitting.



These drawings and specifications are the property of Instockpack and shall not be copied, reproduced, or used in any manner without the prior consent of Instockpack.

← Unwind Direction

- Label Area
- ⋯ Live copy area
- ⋯ 1/16" bleed for die cut
- .25" No Varnish



PRODUCT CODE: KIT015LQFCGP

15ml Liquid Foundation Clear Glass Bottle w/ Pump

DIE LINE TYPE: Label (with overlap)

DATE: 06-JUN-2019

GENERAL INSTRUCTIONS:

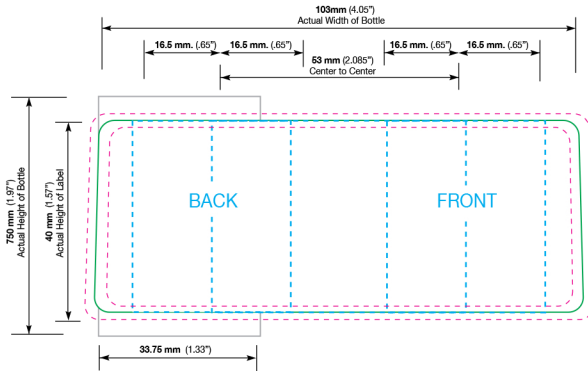
Please include a PDF, list of colors, and convert text to outlines when submitting.

instockpack.

These drawings and specifications are the property of Instockpack and shall not be copied, reproduced, or used in any manner without the prior consent of Instockpack.

← Unwind Direction

○ Label Area ○ Live copy area ○ 1/16" bleed for die cut



PRODUCT CODE: KIT015LQFCGP

15ml Liquid Foundation Clear Glass Bottle w/ Pump

DIE LINE TYPE: Label (with gap)

DATE: 06-JUN-2019

GENERAL INSTRUCTIONS:

Please include a PDF, list of colors, and convert text to outlines when submitting.



These drawings and specifications are the property of Instockpack and shall not be copied, reproduced, or used in any manner without the prior consent of Instockpack.