

PRODUCT CODE: KIT015LQFCGD

DIMENSIONS: 34MM (w) X 96.55MM (h)

DOC TYPE: TECHNICAL DRAWING

MATERIAL: GLASS

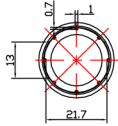
CAPACITY: 15ML

COLOR: CLEAR

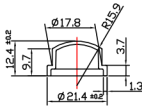
DATE: 2/22/19

These drawings and specifications are the property of Instockpack and shall not be copied, reproduced, or used in any manner without the prior consent of Instockpack.

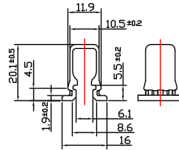
**instockpack.**



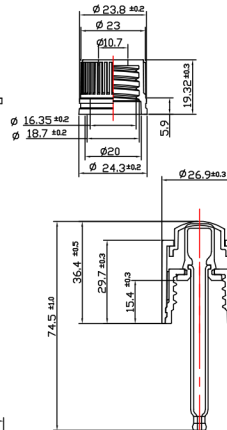
①



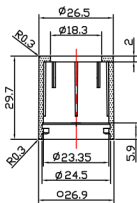
②



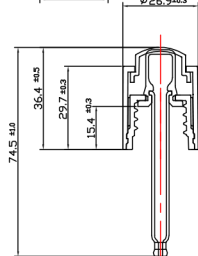
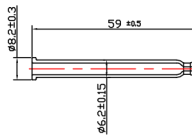
③



④



⑤



PRODUCT : DROPPER

DIMENSIONS: 26.9MM (w) X 74.5MM (h)

DROPPER TYPE: PUSH BUTTON | PIPPET LENGTH: 59MM

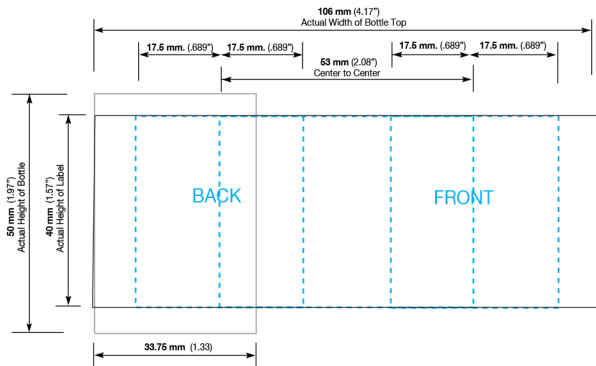
DROPPER COLOR: GLOSS BLACK

CLOSURE TYPE: SCREW ON | TEETH: WHITE SILICONE

DOC TYPE: TECHNICAL DRAWING | DATE: 2/22/19

instockpack.

These drawings and specifications are the property of Instockpack and shall not be copied, reproduced, or used in any manner without the prior consent of Instockpack.



PRODUCT CODE: KIT015LQFCGD

15ml Liquid Foundation Clear Glass Dropper Bottle

DIE LINE TYPE: Silk Screen

DATE: 06-JUN-2019

**GENERAL INSTRUCTIONS:**

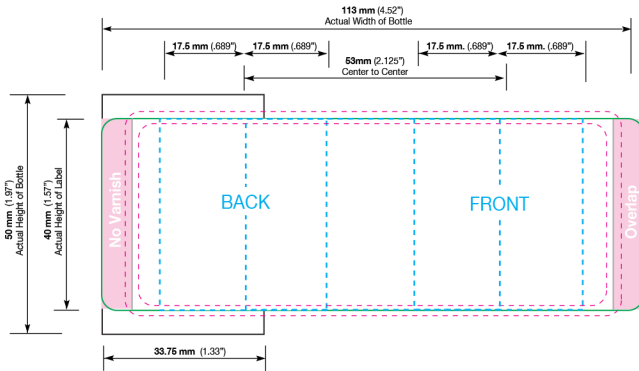
Please include a PDF, list of colors, and convert text to outlines when submitting.



These drawings and specifications are the property of Instockpack and shall not be copied, reproduced, or used in any manner without the prior consent of Instockpack.

← Unwind Direction

- Label Area
- Live copy area
- 1/16" bleed for die cut
- .25" No Varnish



PRODUCT CODE: KIT015LQFCGD

15ml Liquid Foundation Clear Glass Dropper Bottle

DIE LINE TYPE: Label (with overlap)

DATE: 06-JUN-2019

GENERAL INSTRUCTIONS:

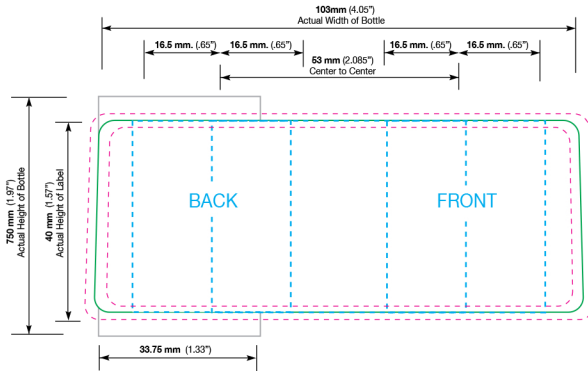
Please include a PDF, list of colors, and convert text to outlines when submitting.

instockpack.

These drawings and specifications are the property of Instockpack and shall not be copied, reproduced, or used in any manner without the prior consent of Instockpack.

← Unwind Direction

○ Label Area    ○ Live copy area    ○ 1/16" bleed for die cut



PRODUCT CODE: KIT015LQFCGD

15ml Liquid Foundation Clear Glass Dropper Bottle

DIE LINE TYPE: Label (with gap)

DATE: 06-JUN-2019

GENERAL INSTRUCTIONS:

Please include a PDF, list of colors, and convert text to outlines when submitting.



These drawings and specifications are the property of Instockpack and shall not be copied, reproduced, or used in any manner without the prior consent of Instockpack.