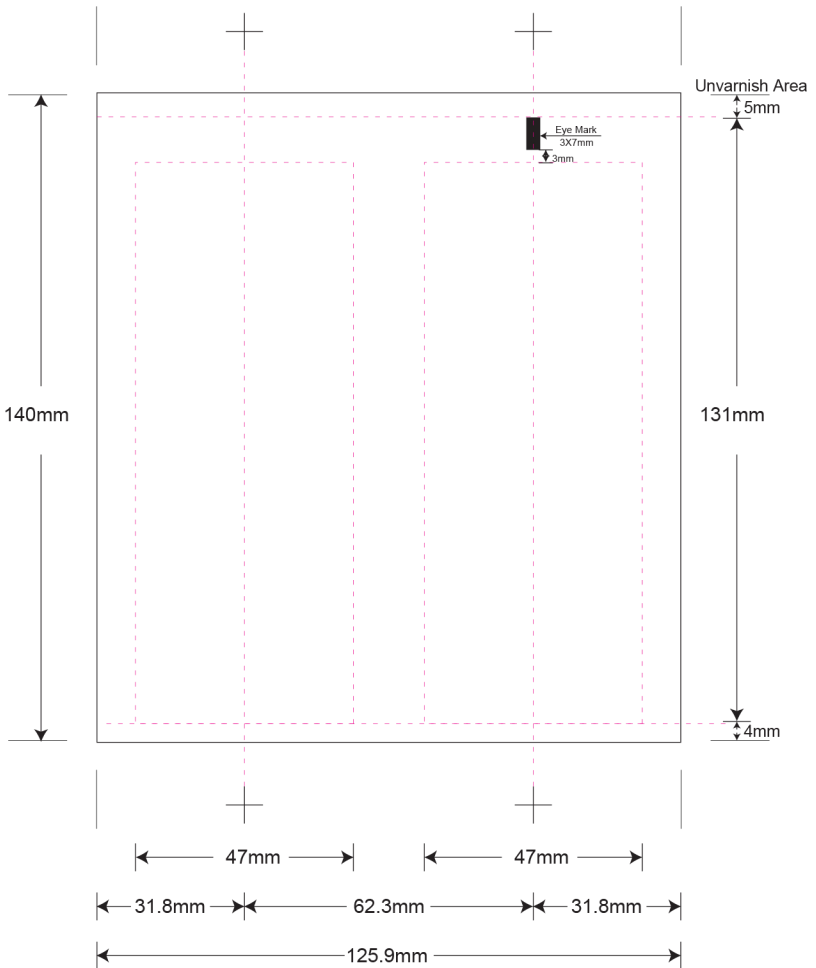


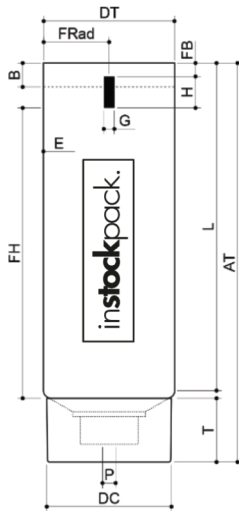
LEGEND	
Shoulder Margin	4mm
Open End Margin	5mm
Eye-Mark size	3x7mm

GENERAL INSTRUCTION
<ul style="list-style-type: none"> <li>• All copy must be 2mm below eye-mark.</li> <li>• Keep eye-mark path free of copy and graphics</li> </ul>



PRODUCT CODE: EHST100WVC1	
4oz Tube & Wood Cap	TUBE SIZE: 40mm x 140mm
DIE LINE TYPE: Silk Screen	
DATE: 15-APR-2019	
Please include a PDF, list of colors, and convert text to outlines when submitting.	
These drawings and specifications are the property of Instockpack and shall not be copied, reproduced or used in any manner without the prior consent of Instockpack.	



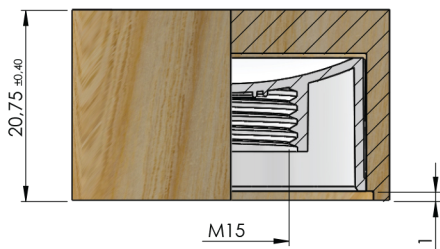
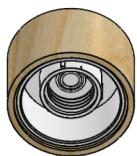
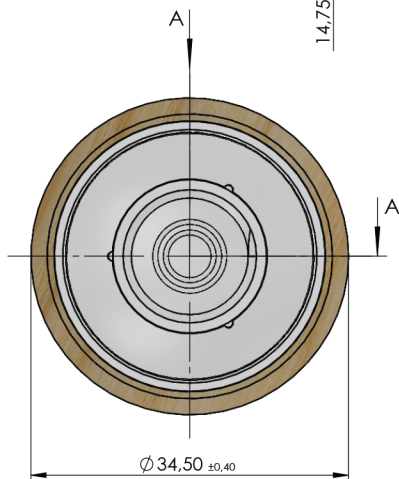
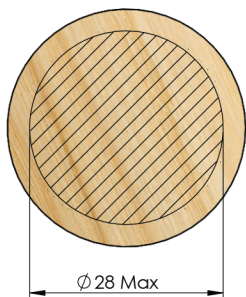
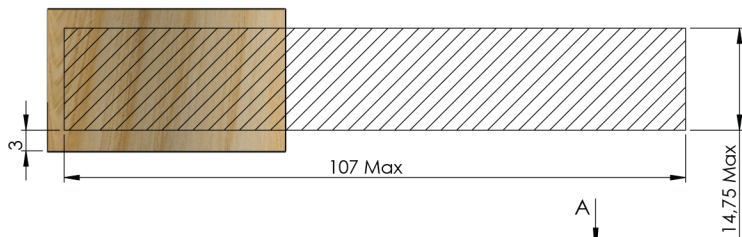


PRODUCT CODE: EHST100WVC1		AT 165.20mm Total height
4oz Tube with Wood Cap	Tube Size: 40mm x 140mm	DT 40.00mm Tube diameter
DOCUMENT TYPE: Specifications		DC 38.70mm Cap diameter
DATE: 16-SEPT-2019		P 2.50mm Orifice diameter
MATERIAL: PP Inner / Wood Outer		E 0.50mm Tube thickness
CAP WEIGHT: 12.60g	Varnish: Gloss	L 140.00mm Tube length
COLOR: White Inner/ FR898 Outer		T 22.70mm Cap height
		B 7.00mm Unvarnished area height

COEXTRUSION	
OUTER LAYER: 50% PCR PE + 50% PE	COLOR: WHITE
MIDDLE LAYER: EVOH	THICKNESS: 20.00
INTERNAL LAYER: 50% PE, 50% PE	COLOR: WHITE
These drawings and specifications are the property of Instockpack and shall not be copied, reproduced or used in any manner without the prior consent of Instockpack.	



Deco Area



Wood Cap for EHST100WMC1

DOCUMENT TYPE: Specifications

DATE: 16-SEPT-2019

CAP WEIGHT: 12.60g



These drawings and specifications are the property of Instockpack and shall not be copied, reproduced or used in any manner without the prior consent of Instockpack.