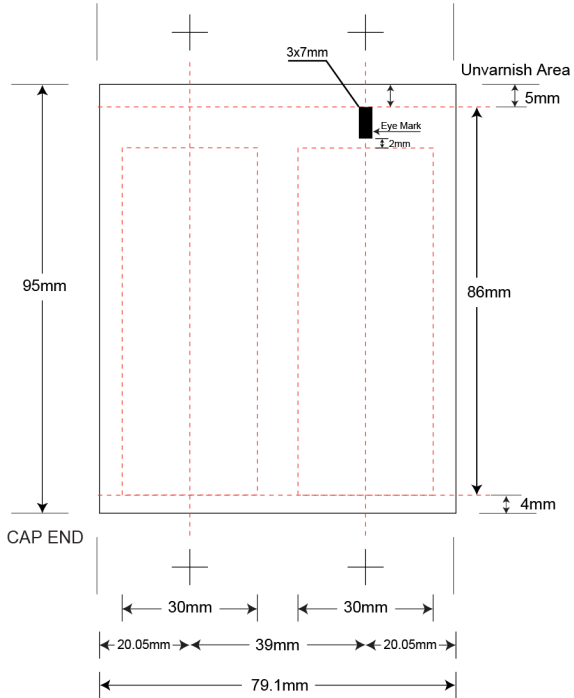


LEGEND	
Shoulder Margin	4mm
Open End Margin	5mm
Eye-Mark size	3x7mm

GENERAL INSTRUCTION
<ul style="list-style-type: none"> <li>• All copy must be 2mm below eye-mark.</li> <li>• Keep eye-mark path free of copy and graphics</li> </ul>



PRODUCT CODE: EHST030WWC1

1oz Tube & Wood Cap | TUBE SIZE: 25mm x 95mm

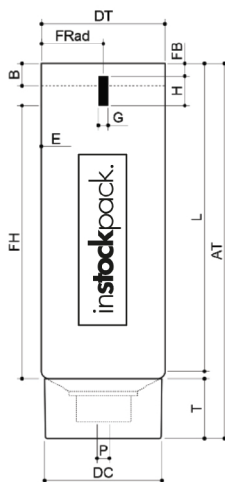
DIE LINE TYPE: Silk Screen

DATE: 15-APR-2019

Please include a PDF, list of colors, and convert text to outlines when submitting.



These drawings and specifications are the property of Instockpack and shall not be copied, reproduced or used in any manner without the prior consent of Instockpack.



PRODUCT CODE: EHST030WVC1		AT 112.00mm Total height
1oz Tube with Wood Cap	Tube Size: 25mm x 95mm	DT 25.00mm Tube diameter
DOCUMENT TYPE: Specifications		DC 24.00mm Cap diameter
DATE: 16-SEPT-2019		P 2.50mm Orifice diameter
MATERIAL: PP Inner / Wood Outer		E 0.50mm Tube thickness
CAP WEIGHT: 4.40g		L 95.00mm Tube length
VARNISH: Gloss		T 16.00mm Cap height
		B 7.00mm Unvarnished area height

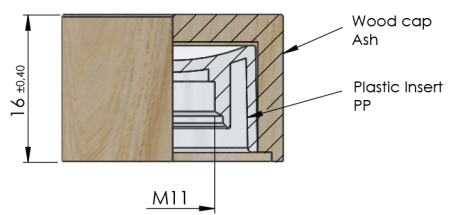
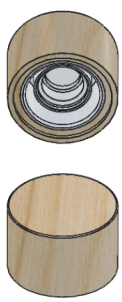
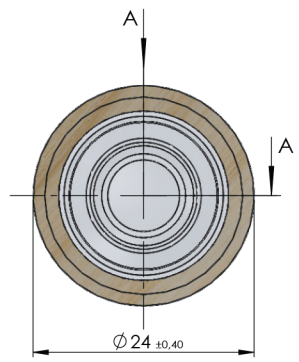
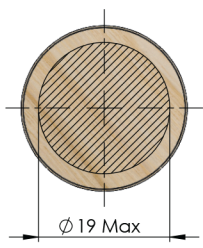
COLOR: White Inner/ FR898 Outer

**COEXTRUSION**

OUTER LAYER: 50% PCR PE + 50% PE	COLOR: WHITE
MIDDLE LAYER: EVOH	THICKNESS: 20.00
INTERNAL LAYER: 50% PE, 50% PE	COLOR: WHITE

These drawings and specifications are the property of Instockpack and shall not be copied, reproduced or used in any manner without the prior consent of Instockpack.





Wood Cap for EHST030WMC1

DOCUMENT TYPE: Specifications

DATE: 16-SEPT-2019

CAP WEIGHT: 4.50g



These drawings and specifications are the property of Instockpack and shall not be copied, reproduced or used in any manner without the prior consent of Instockpack.