

C-C
1:1

PRODUCT CODE: EHST030BIOJ

DESCRIPTION: 30ml Bio Jar (OFC: 47ml)

DOC TYPE: TECHNICAL DRAWING

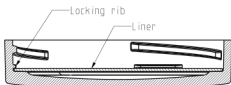
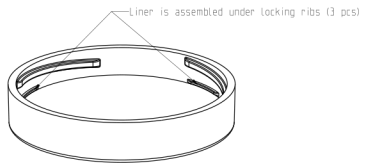
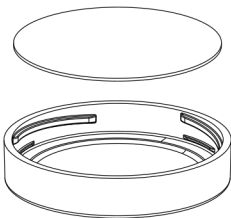
DATE: 12/6/19

REVISION: R1

SCALE: 1:1

These drawings and specifications are the property of Instockpack and shall not be copied, reproduced, or used in any manner without the prior consent of Instockpack.

instockpack.



Tolerances of Linear dimensions Medium ISO 2768-m (in millimeters)	
Dimension	Tolerance
0,5 - 3	± 0,1
3 - 6	± 0,1
6 - 30	± 0,2
30 - 120	± 0,3
120 - 400	± 0,5

PRODUCT CODE: EHST030BIOJ

DESCRIPTION: 30ml Bio Jar (OFC: 47ml)

DOC TYPE: TECHNICAL DRAWING

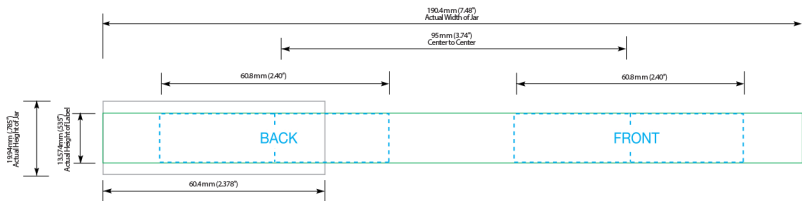
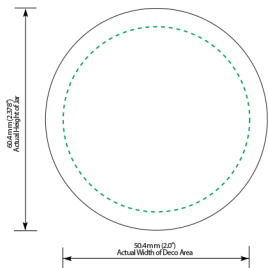
DATE: 12/6/19

REVISION: R1

SCALE: 1:1

These drawings and specifications are the property of Instockpack and shall not be copied, reproduced, or used in any manner without the prior consent of Instockpack.

instockpack.



PRODUCT CODE: EHST030BIOJ

DESCRIPTION: 30ml Biodegradable Jar

DOC TYPE: SILK SCREEN

GENERAL INSTRUCTIONS:

Please include a PDF, list of colors, and convert text to outlines when submitting.

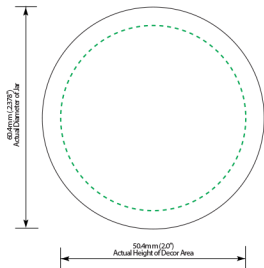
DATE: 12/6/19

REVISION: R1

SCALE: 1:1

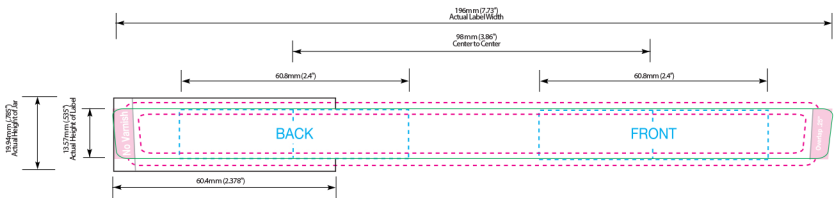


These drawings and specifications are the property of Instockpack and shall not be copied, reproduced, or used in any manner without the prior consent of Instockpack.



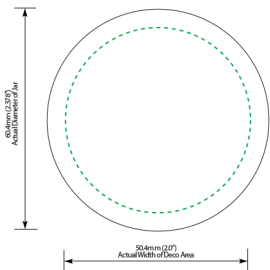
← Unwind Direction

- Label Area
- Live copy area
- 1/16" bleed for die cut
- 25° No Varnish



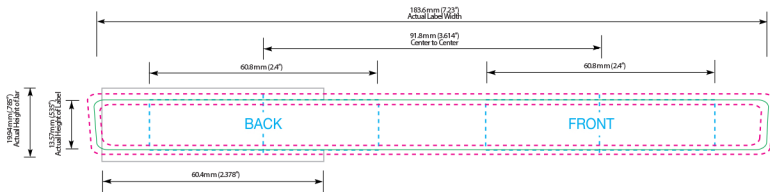
PRODUCT CODE: EHST030BIOJ		
DESCRIPTION: 30ml Biodegradable Jar		
DOC TYPE: LABEL (WITH OVERLAP)		
GENERAL INSTRUCTIONS: Please include a PDF, list of colors, and convert text to outlines when submitting.		
DATE: 12/6/19	REVISION: R1	SCALE: 1:1
These drawings and specifications are the property of Instockpack and shall not be copied, reproduced, or used in any manner without the prior consent of Instockpack.		





← **Unwind Direction**

- Label Area
- Live copy area
- 1/16" bleed for die cut



PRODUCT CODE: EHST030BIOJ

DESCRIPTION: 30ml Biodegradable Jar

DOC TYPE: LABEL (WITH GAP)

GENERAL INSTRUCTIONS:

Please include a PDF, list of colors, and convert text to outlines when submitting.

DATE: 12/6/19

REVISION: R1

SCALE: 1:1



These drawings and specifications are the property of Instockpack and shall not be copied, reproduced, or used in any manner without the prior consent of Instockpack.