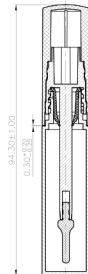
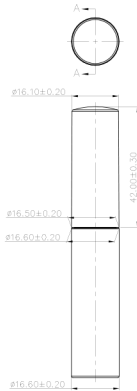
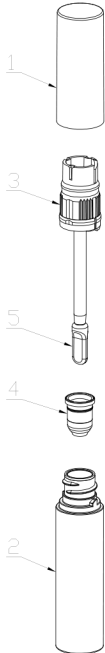
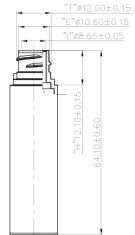
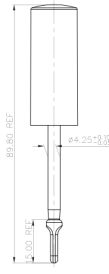
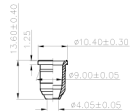


SCALE 1/2



SECTION A-A



5	Applicator	---	---	---
4	WIPER	LDPE + EVA	0.3g	GEL.TOL: ± 0.20
3	STEM	PP	1.8g	G.T: 9.5 \pm 0.8g
2	BOTTLE	PETG	4.2g	
1	CAP	ABS	3.0g	REMARK: OFC : 9.0 \pm 0.6ml
Part	Parts Name	Material	Weight	

PRODUCT CODE: EHST007MUEL

SCALE: 1:1

PRODUCT: EYELINER

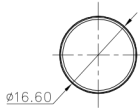
DATE: 9/17/19

DOC TYPE: TECHNICAL DRAWING

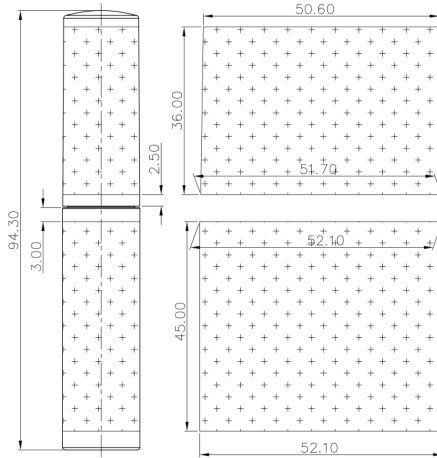
REVISION: R2

These drawings and specifications are the property of Instockpack and shall not be copied, reproduced, or used in any manner without the prior consent of Instockpack.

instockpack.



Decoration Area: only fit for
Silk Screen Printing or Roll Hot Stamping



Logo Normal size
For Reference:



PRODUCT CODE: EHST007MUEL	SCALE: 1:1
PRODUCT: EYELINER	DATE: 9/17/19
DOC TYPE: PRINT AREA	REVISION: R2

These drawings and specifications are the property of Instockpack and shall not be copied, reproduced, or used in any manner without the prior consent of Instockpack.

