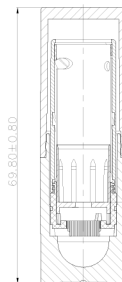
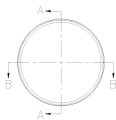
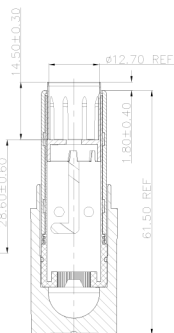


SCALE 1/2



SECTION A-A



SECTION B-B



5	INNER BODY	HIPS+PS	1.6g
4	ELEVATOR	POM	1.0g
3	SPIRAL	ABS	1.6g
2	BASE	ABS/AS	7.0g
1	CAP	ABS/AS	5.0g
Part	Parts Name	Material	Weight

G.T:  $16.2 \pm 1.5g$

GEL.TOL:  $\pm 0.25$

PRODUCT CODE: EHST0001MULS      SCALE: 1:1

PRODUCT: LIPSTICK      DATE: 9/17/19

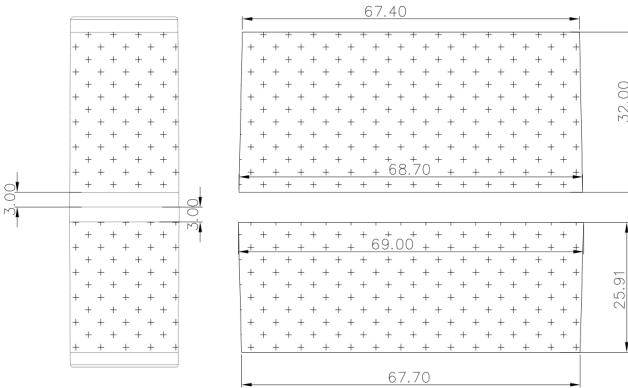
DOC TYPE: TECHNICAL DRAWING      REVISION: R2

These drawings and specifications are the property of Instockpack and shall not be copied, reproduced, or used in any manner without the prior consent of Instockpack.

**instockpack.**



Decoration Area: only fit for  
Silk Screen Printing or Roll Hot Stamping



Logo Normal size  
For Reference:



PRODUCT CODE: EHST0001MULS

SCALE: 1:1

PRODUCT: LIPSTICK

DATE: 9/17/19

DOC TYPE: PRINT AREA

REVISION: R2

These drawings and specifications are the property of Instockpack and shall not be copied, reproduced, or used in any manner without the prior consent of Instockpack.

**instockpack.**