

LEGEND

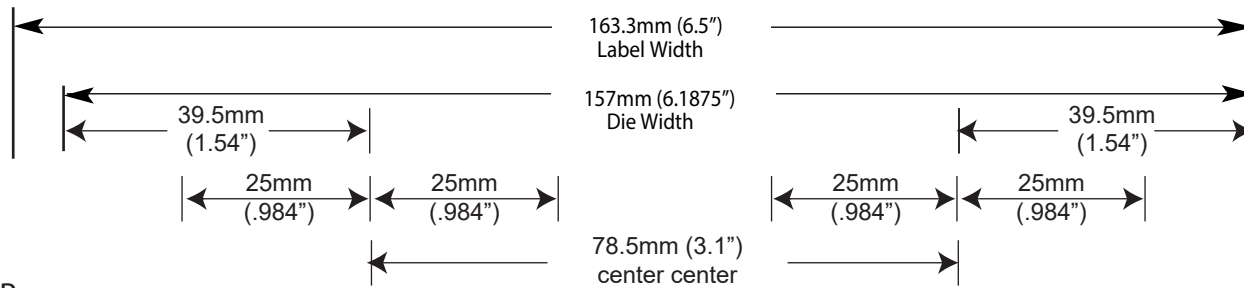
GENERAL INSTRUCTION

Shoulder Margin	4mm
Open End Margin	10mm
Eye-Mark size	2mm x 6.35mm

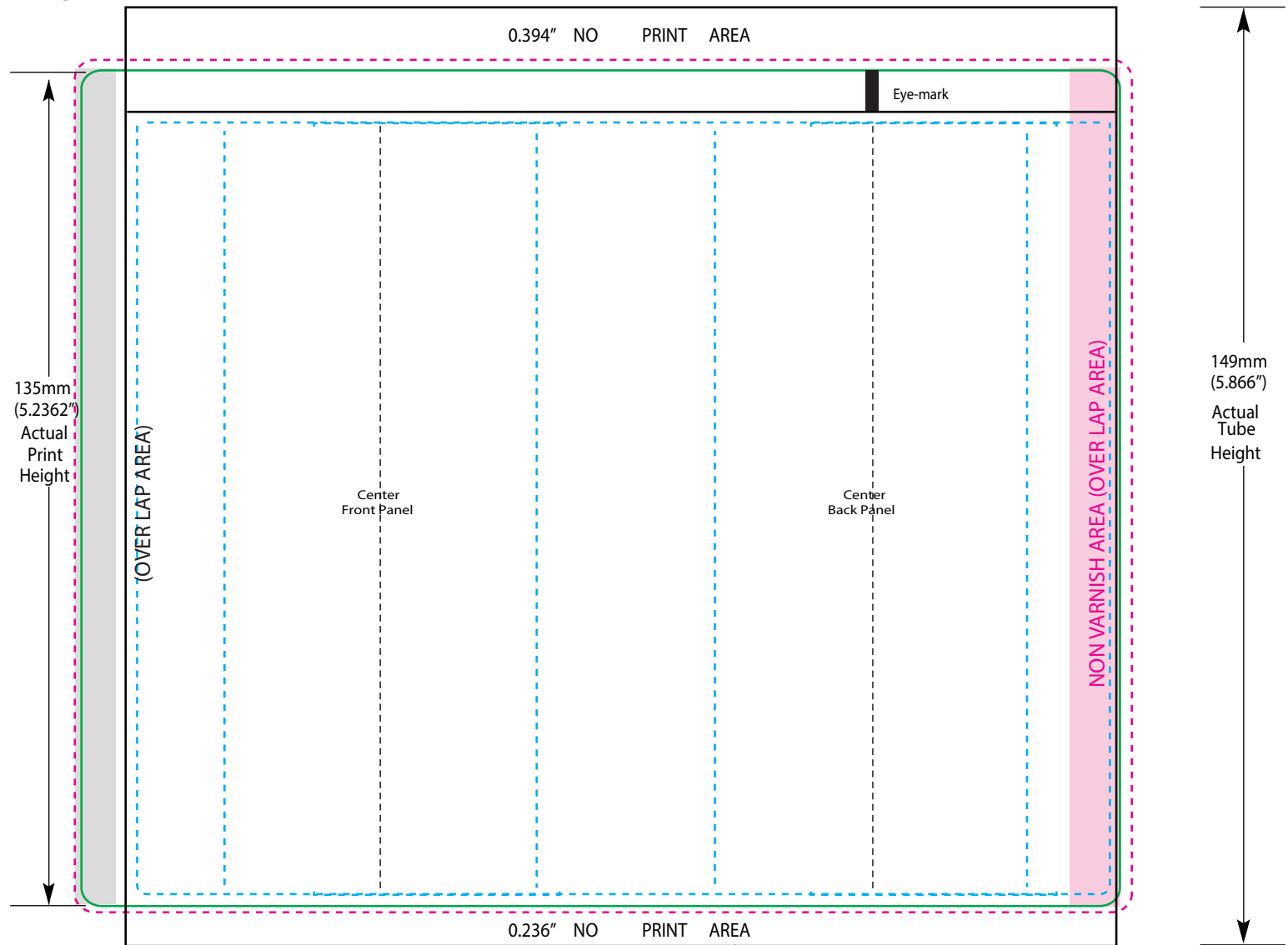
- All copy must be 2mm below eye-mark.
- Keep eye-mark path free of copy and graphics.
- All panels are shifted by 6.35mm from the crimp axis to move the overlap onto the back panel.
- Label corner radius is 3mm.

Unwind Direction →

- Label Area
- ⊖ 1/16" bleed for die cut
- ⊖ Live copy area
- .25" no coating area
- .25" (Over lap)



RCR



CAP END



PRODUCT CODE: EHST180W

6oz Stock Tube TUBE SIZE: 50mm x 149mm

DIE LINE TYPE: Label overlap 6.35mm

DATE: 07-JUN-2018

Please include a PDF, list of colors, and convert text to outlines when submitting.

These drawings and specifications are the property of Instockpack and shall not be copied, reproduced or used in any manner without the prior consent of Instockpack.

