

# PRODUCT DATA SHEET

June 2023

**instockpack.**

**Beauty Packaging**  
at your fingertips.

instockpack.com

## Stock Tubes: Proudly PCR Plastic



At Instockpack, as a B Corp company, we are committed to sustainable packaging solutions. Our stock tubes are now composed of PCR (post-consumer recycled) plastic, which gives a second life to plastic materials and helps reduce carbon footprint.

### Layers Specification:

1. Inner Layer: Virgin PE to maximize compatibility and sealing performance.
2. Middle Layer: EVOH, a barrier that helps preserve your formula's integrity.
3. Outer Layer & Tube Head: Mix of virgin and recycled PE.
4. Cap: Virgin PP (polypropylene)

**Certification & Quality Assurance**  
Certified FDA PCR raw materials.

**Performance / Sealing**  
The inner layer are made of virgin PE to maintain same sealing parameter.

**Advantages for Your Brand**

1. No compromise on performance and compatibility
2. Environmentally-friendly packaging solution
3. Compliance with growing sustainability demands from consumers and regulators

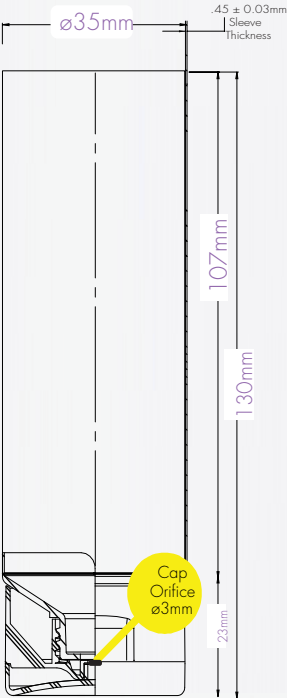
**Inherent to PCR Process**  
The use of PCR plastic (FDA approved) may sometimes lead to the appearance of small black dots on our tubes. This is attributed to the presence of black plastic granulate in the recycled material. Despite our best efforts to minimize this, it can sometimes occur due to the current recycling stream.



PACK CODE  
PACK TYPE  
CATEGORY

2oz White Tube  
Tubes  
Skincare

DESCRIPTION	2oz White Glossy Stock Tube Option to Custom Order
BENEFITS	Formula protection (EVOH Barrier) 25% PCR (tube sleeve + head) Easy Bottom Fill & Seal
APPLICATIONS	Glossy Varnish - Easy To Apply Decoration Hair Care, Body Care, Skin Care, Sun Care



\*Drawing scale not 1:1



TECHNICAL SPECIFICATIONS

GENERAL INFORMATION

DIMENSIONS	
Tube Height(Stock)	107mm
Total Height(Stock)	130mm
Diameter	35mm
Sleeve Thickness	0.45 +/-0.03
Head Scew	Yes
Cap Orifice	3mm

MANUFACTURING & PACKING

PRODUCTION & SHIPPING	
Lead time (Stock)	2-3 days
MOQ Instockpack	1 case
FOB	Dallas, TX

PACKING SPECS

Carton Size	G.W	N.W	Qty/Ctn
L50.5XW33.4XH37CM	4.208KG	3.086 KG	270

MATERIALS

Cap	Virgin PP
Head	40% PCR PE
Top Seal	PE/AL
Tube	5-Layer CO-EX EVOH
Inner Layer	Virgin PE
Outer Layer	45% PCR PE
Tube 5-Layer	(LDPE)

CAPACITY

Declared	2oz
----------	-----

SEALING RECOMMENDATION

- Temperature range: 300° - 450°C
- Speed: 35-50 tubes per minute.
- Air pressure: 0.5 bar

\*Conditions may vary depending on the machine model.

DECO OPTIONS

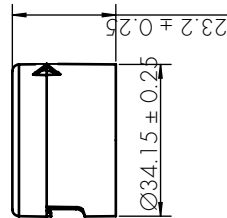
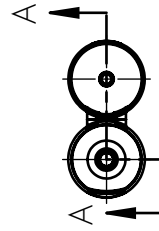
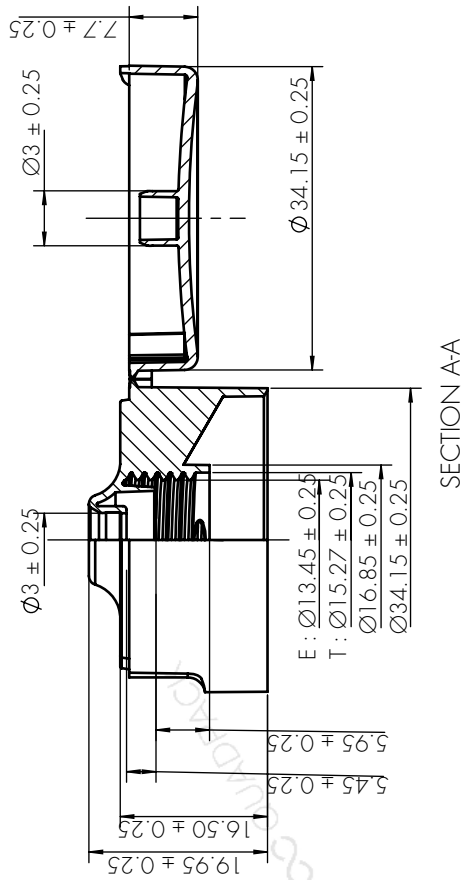
- Tube
- Silk Screen
  - Hot Stamping
  - Labeling
  - Heat Transfer

June 2023

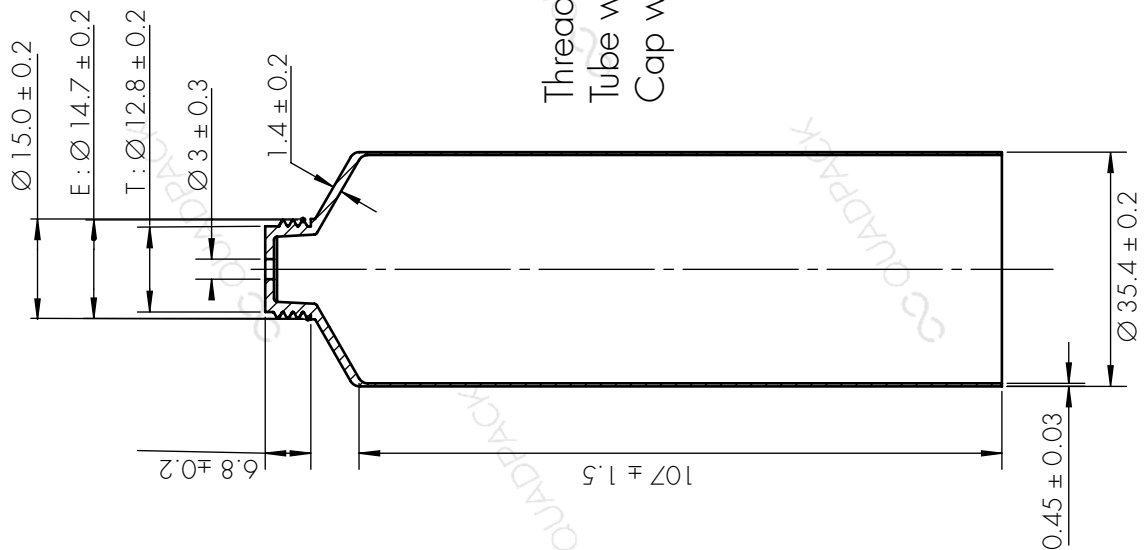
instockpack.

**Beauty Packaging**  
at your fingertips.

instockpack.com



Thread Pitch : 3.0  
Tube weight :  $6.68 \pm 1$  g  
Cap weight :  $4.44 \pm 0.5$  g



\*DRAWING NOT TO SCALE