

FLEX CHAIR

M VITEO

D CREATIVE LAB BARCELONA

The new FLEX collection impresses with its clear design, simple contours and maximum flexibility. The delicate stainless steel base with teak armrests underlines the idea of exceptional lightness and comfort. The Sling material offers a pleasant and comfortable seating experience by the use of particularly resistant yarns.



W 22.8" x D 21.7" x H 33.5
seat height 18.9"

FRAME

STAINLESS STEEL

SEAT COLOR

SAILING SEAGUL
SAILING SEAGUL
LOGAN GRAPHITE

ARMREST

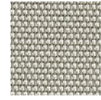
TEAK

FRAME COLOR

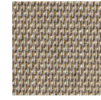
BRUSHED
POWDER COATED
BLACK
WHITE



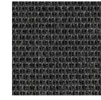
SLING



X sailing seagull



Y sailing space



Z logan graphite



