

POI TRAY

M VICTOR FOXTROT

Point of interest. A place for things you don't want to lose. The tray is made of powder-coated steel and comes with a serially numbered brass badge. Whether for keys, jewelry, or important papers, the POI trays can be used for various things. A perfect present for design lovers.



X-LARGE: L 13.6" x W 13.6" x H 1.2"

LARGE: L 9.1" x W 13.6" x H 1.2"

MEDIUM: L 9.1" x W 4.5" x H 1.2"

SMALL: L 4.5" x W 4.5" x H 1.2"

MATERIAL

POWDER-COATED STEEL

COLORS

VERMILLION
PALE PINK
YELLOW
OFF WHITE
TEAL
DOVE BLUE
DARK GREEN
PALE GREEN
BLACK
NAVY

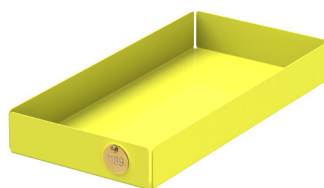
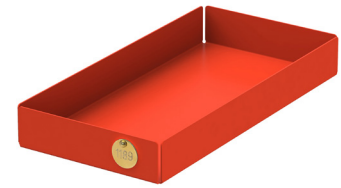
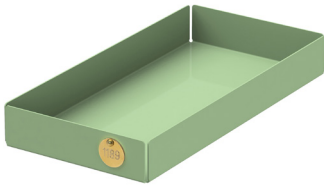
LEATHER INLAY

NATURAL
COGNAC
NAVY



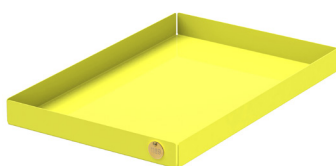
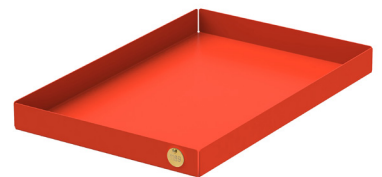
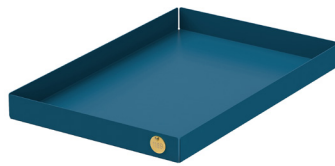
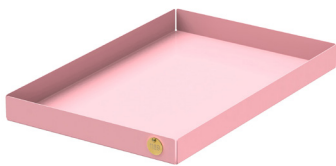
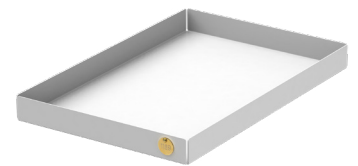
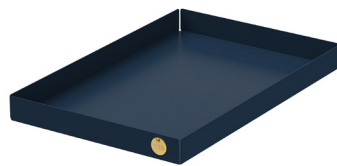
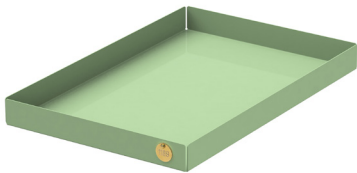
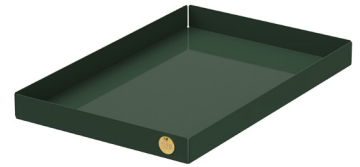
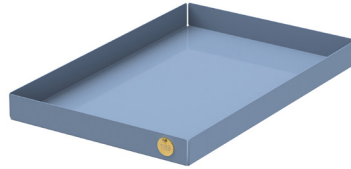
POI S TRAY

SMALL: L 4.5" x W 4.5" x H 1.2"



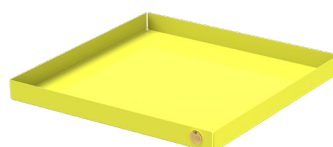
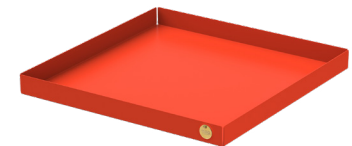
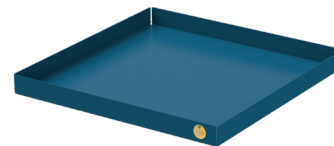
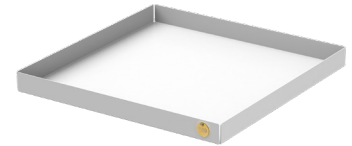
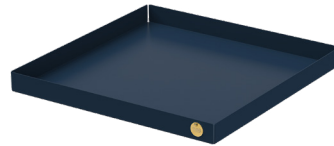
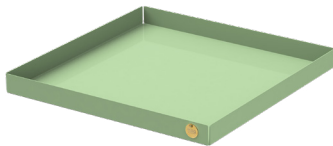
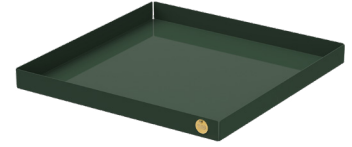
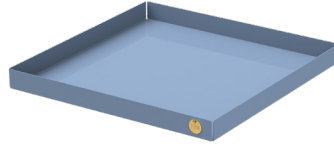
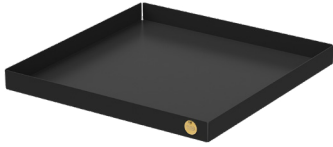
POI M TRAY

MEDIUM: L 9.1" x W 4.5" x H 1.2"



POI L TRAY

LARGE: L 9.1" x W 13.6" x H 1.2"



POI XL TRAY

X-LARGE: L 13.6" x W 13.6" x H 1.2"

