

WAVE ROCKING ARMCHAIR

M TON
D MICHAL RIABIC

Wave was made for the 150th anniversary of furniture bending in Bystřice pod Hostýnem as a re-design of the Dondolo classic. It is not only a comfortable rocking chair or lounge chair, but also an out-of-the-ordinary solitaire. We use for its manufacture squared beech rods with a length of 3 metres – some of the longest in our production process.



W 41.7" x D 49.2" x H 34.4"/39.2"

SEAT HEIGHT 18.1"

FRAME
BEECH

VARIOUS COLORS

UPHOLSTERY
FABRIC
LEATHER

VARIOUS COLORS



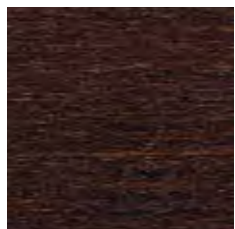
NATURAL FINISHES

natural
beech - lacquer / oil

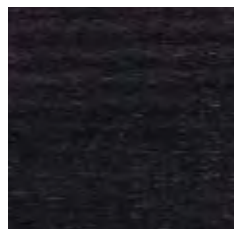


STAINS

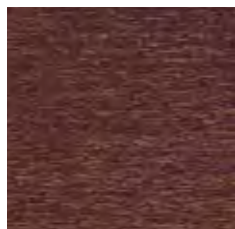
B4 coffee
beech/oak/ash - lacquer



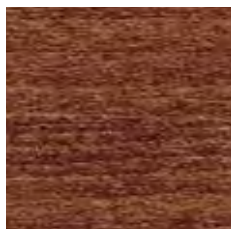
B105 dark wenge
beech/oak/ash - lacquer



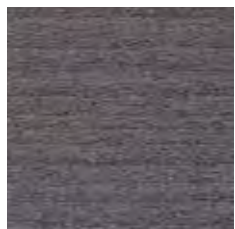
B112 dark chocolate
beech/oak/ash - lacquer



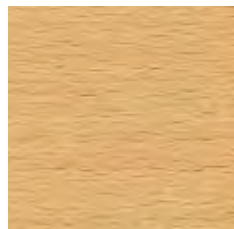
B114 nougat
beech/oak/ash - lacquer



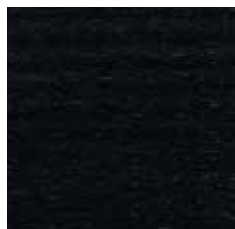
B115 granite
beech/oak/ash - lacquer



B116 honey
beech/ash - lacquer



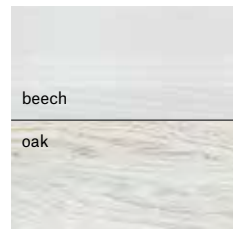
B123 black grain
beech/oak/ash - lacquer



B276 white powder
beech/oak/ash - lacquer



Colour difference between beech
and oak in B276 - white powder



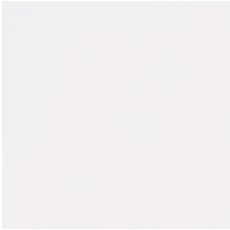
ANTIQUE

B130/A
antique classic
beech



PIGMENTED COLORS

B20 white
RAL 9016
beech/oak/ash



B31 sandy beige
NCS S 3005 - Y20R
beech/oak/ash



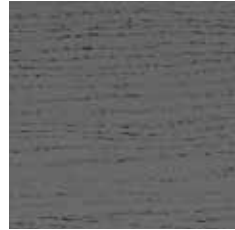
B32 ginger yellow
NCS S 2060 - Y10R
beech/oak/ash



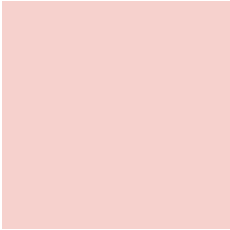
B37 ocean blue
RAL 5008
beech/oak/ash



B38 grey shadow
NCS S 7502 - G
beech/oak/ash



B40 nude pink
NCS S 1010 - Y90R
beech/oak/ash



B41 salmon pink
NCS S 0570 - Y80R
beech/oak/ash



B42 coral orange
NCS S 0585 - Y80R
beech/oak/ash



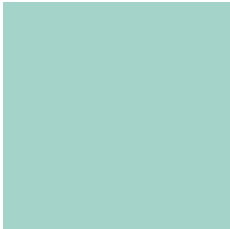
B43 ruby red
NCS S 1085 - Y90R
beech/oak/ash



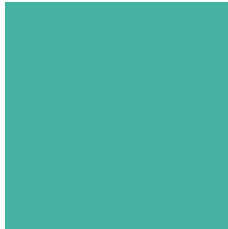
B44 creamy yellow
NCS S 0540 - Y
beech/oak/ash



B45 aqua green
NCS S 0520 - B70G
beech/oak/ash



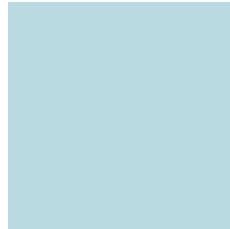
B46 turquoise green
NCS S 2040 - B80G
beech/oak/ash



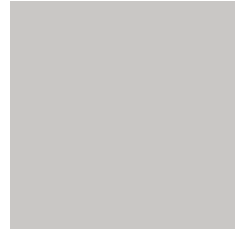
B47 pine green
NCS S 8010 - B30G
beech/oak/ash



B48 baby blue
NCS S 0520 - B
beech/oak/ash



B49 cloud grey
NCS S 2000 - N
beech/oak/ash



B50 moon grey
NCS S 3500 - N
beech/oak/ash



B52 blue berries
NCS S 5030 - R80B
beech/oak/ash



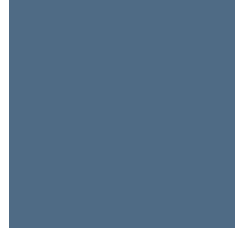
B53 opal blue
NCS S 3030 - B10G
beech/oak/ash



B54 mountain fjord
NCS S 5030 - B10G
beech/oak/ash



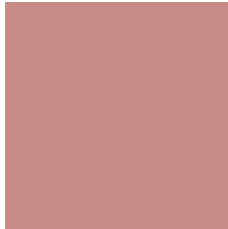
B55 ashy blue
NCS S 5020 - R80B
beech/oak/ash



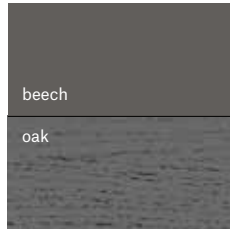
B61 lichen green
NCS S 5020 - B70G
beech/oak/ash



B95 taupe pink
NCS S 3020 - Y90R
beech/oak/ash

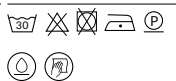


Colour difference between beech and oak in B38 - grey shadow



Category A

■ Brunei

| Composition | Width | Abrasion resistance | Pilling | Flame retardancy | Ecology | Cleaning |
|----------------|--------|---------------------|---------|------------------|----------|---|
| 100% polyester | 140 cm | 30 000 MD | 4 | BS 5852 Part 1 | Oeko-Tex |  |



18



29



31




38



45

■ Fargo

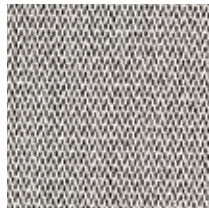
| Composition | Width | Abrasion resistance | Pilling | Flame retardancy | Ecology | Cleaning |
|----------------|--------|---------------------|---------|------------------|---------|---|
| 100% polyester | 142 cm | 62 000 MD | 4-5 | EN 1021 Part 1 | — |  |



701



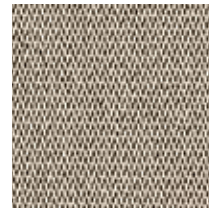
710



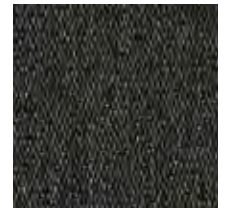
801



923




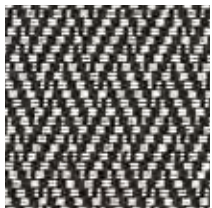
927



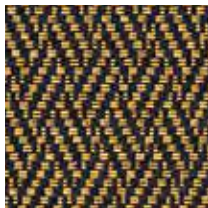
990

■ Harby

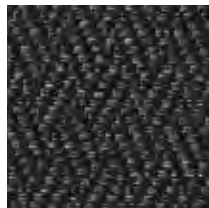
| Composition | Width | Abrasion resistance | Pilling | Flame retardancy | Ecology | Cleaning |
|----------------|--------|---------------------|---------|------------------|---------|---|
| 100% polyester | 142 cm | 62 000 MD | 4-5 | EN 1021 Part 1 | — |  |



801



810



990

Category A

■ Jim

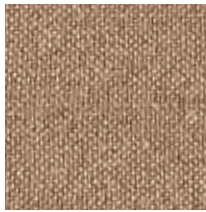
| Composition | Width | Abrasion resistance | Pilling | Flame retardancy | Ecology | Cleaning |
|---|--------|---------------------|---------|------------------|----------|----------|
| 56% cotton, 12% linen, 12% polyester, 12% viscose | 142 cm | 54 000 MD | 4 | EN 1021 Part 1 | Oeko-Tex | |



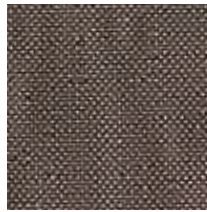
598



604



718



767



803



826



828



898

■ Lerma

| Composition | Width | Abrasion resistance | Pilling | Flame retardancy | Ecology | Cleaning |
|----------------|--------|---------------------|---------|------------------|----------|----------|
| 100% polyester | 142 cm | 112 000 MD | 4-5 | EN 1021 Part 1 | Oeko-Tex | |



701



801



818



847



882



909

■ Luciana

| Composition | Width | Abrasion resistance | Pilling | Flame retardancy | Ecology | Cleaning |
|---------------------------|--------|---------------------|---------|------------------|---------|----------|
| 57% cotton, 43% polyester | 142 cm | 40 000 MD | 4 | EN 1021 Part 1 | — | |



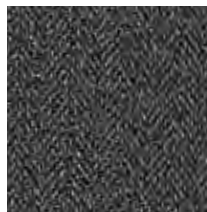
750



801



838



881

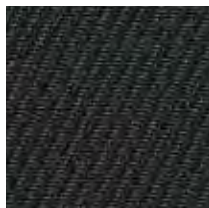
Category A

Manresa

| Composition | Width | Abrasion resistance | Pilling | Flame retardancy | Ecology | Cleaning |
|---|--------|---------------------|---------|------------------|---------|----------|
| 52% cotton, 26% polyester, 11% viscose, 11% linen | 142 cm | 55 000 MD | 4 | EN 1021 Part 1 | — | |



108



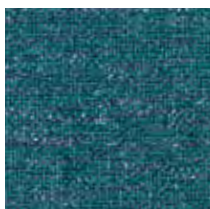
905



907

Robo

| Composition | Width | Abrasion resistance | Pilling | Flame retardancy | Ecology | Cleaning |
|--|--------|---------------------|---------|------------------|---------|----------|
| 33% cotton, 37% polyester, 21% viscose, 9% linen | 142 cm | 48 000 MD | 4 | EN 1021 Part 1 | — | |



562



566



703



708



820



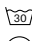

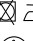





857



885

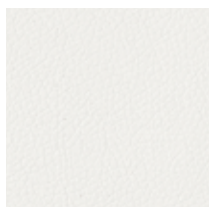
Category A

■ Grain 

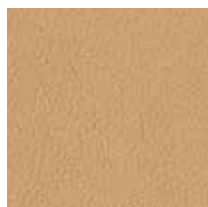
| Composition | Width | Abrasion resistance | Pilling | Flame retardancy | Ecology | Cleaning |
|---|--------|---------------------|---------|---|---------|--|
| surface 100% polyurethane; underlay 67% polyester, 33% cotton | 140 cm | 200 000 MD | — | BS 5852 Part 1 California TB117-2013 EN 1021 Part 1 & 2 | REACH |         |



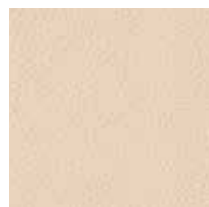
arcilla 75



blanco 00



canela 11



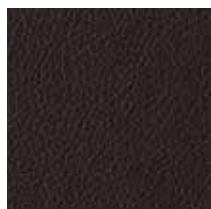
crema 02



gris 01



marino 69



marron 23



negro 90



rojo 29



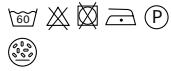
teja 15

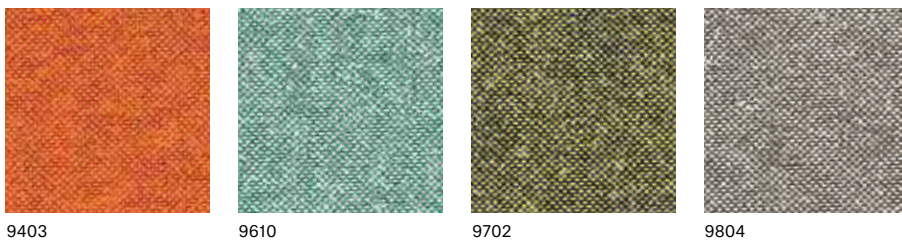
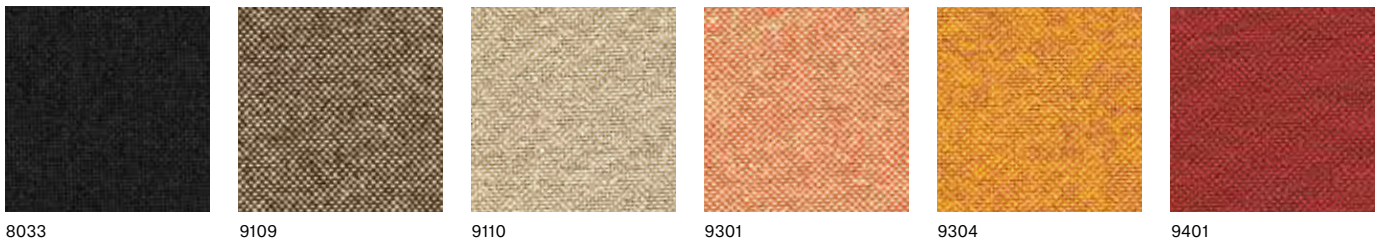


tierra 07


Category B

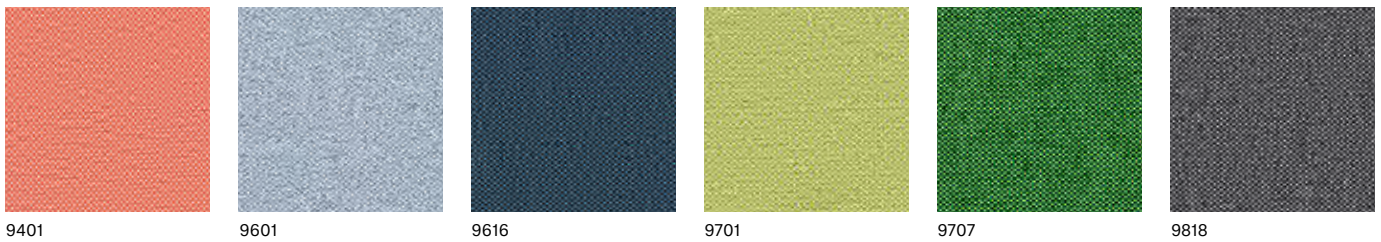
■ Jet Bioactive  

| Composition | Width | Abrasion resistance | Pilling | Flame retardancy | Ecology | Cleaning |
|----------------------------|--------|---------------------|---------|--|----------|---|
| 100% Trevira® CS Bioactive | 140 cm | 65 000 MD | 5 | BS 5852 Crib 5 California TB117-2013 DIN 4102 Class B1 EN 1021 Part 1 & 2 NF 92501-7 Class M1 ÖNORM A 3800-1 Class Q1 ÖNORM B 3825 | Oeko-Tex |  |



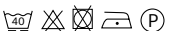

■ Torino 

| Composition | Width | Abrasion resistance | Pilling | Flame retardancy | Ecology | Cleaning |
|------------------|--------|---------------------|---------|---|----------|---|
| 100% Trevira® CS | 140 cm | 70 000 MD | 5 | BS 5852 Crib 5 California TB117-2013 DIN 4102 Class B1 EN 1021 Part 1 & 2 NF 92501-7 Class M1 ÖNORM A 3800-1 Class B1,Q1,TR1 ÖNORM B 3825 | Oeko-Tex |  |



Category B

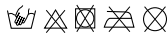

■ Palma NF  

| Composition | Width | Abrasion resistance | Pilling | Flame retardancy | Ecology | Cleaning |
|------------------------|--------|---------------------|---------|---|---------|---|
| surface 100% vinyl | 137 cm | 50 000 MD | — | BS 5852 Crib 5 California TB117-2013 DIN 4102 Part 1 Class B1 + B2 DIN 53438 Part 2 & 3 DIN 66084 P-a EN 1021 Part 1 & 2 NF P 92503 Class M1 ÖNORM A 3800-1 Class Q1 ÖNORM B 3825 | REACH |  |
| surface 100% cotton | | | | | |  |

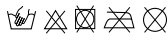



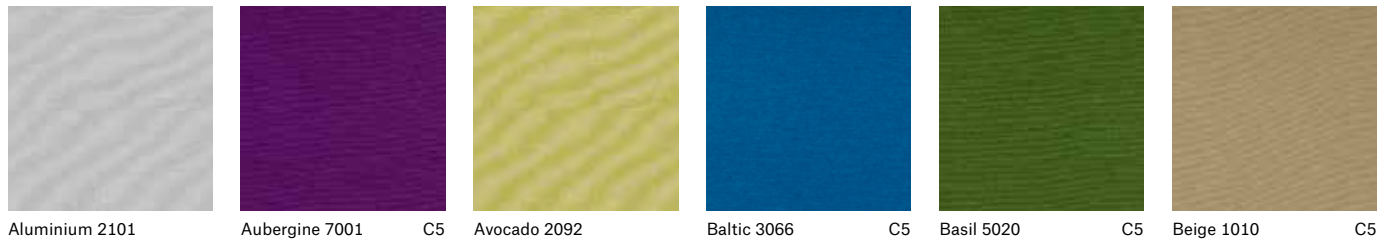
Category B

■ Silvertex®  

| Composition | Width | Abrasion resistance | Pilling | Flame retardancy | Ecology | Cleaning |
|---------------------------|--------|---------------------|---------|--|---------|---|
| surface 100% vinyl | 137 cm | 300 000 MD | — | California TB117-2013 DIN 4102 Class B2 EN 1021 Part 1 & 2 | REACH |  |
| surface 100% polyester | | | | NF P 92503 Class M2 ÖNORM A 3800-1 Class Q1 ÖNORM B 3825 | |  |

■ Silvertex® C5  

| Composition | Width | Abrasion resistance | Pilling | Flame retardancy | Ecology | Cleaning |
|------------------------|--------|---------------------|---------|---|---------|---|
| surface 100% vinyl | 137 cm | 100 000 MD | — | BS 5852 Crib 5 DIN 4102 Class B2 EN 1021 Part 1 & 2 | REACH |  |
| surface 100% cotton | | | | NF P 92503 Class M2 | |  |



Category B

■ Silvertex®



Graphite 4003

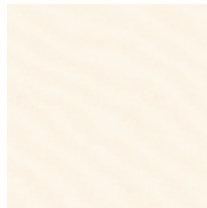


Grenadine 2095



Ice 4004

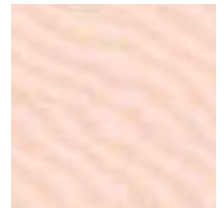
C5



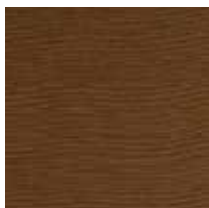
Ice Cream 2090



Jet 3068



Lotus 2099



Luggage 0073



Macadamia 0001

C5



Magenta 7002

C5



Mandarin 6061

C5



Melon 6062



Meteor 4024

C5



Mocca 0005

C5



Orange 0013



Orchid 2097



Petrol 2094



Pistacho 5008

C5



Plata 4001

C5



Raspberry 2016



Red 2011

C5



Rosé 2098



Rubin 6004

C5



Safran 6065

C5



Sage 5009



Sandstone 0002

C5



Sapphire 3007

C5

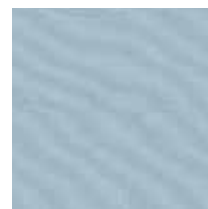


Shiitake 4012



Sisal 1051

C5



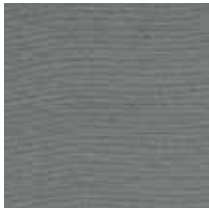
Skylight 2103



Squash 2093

Category B

■ Silvertex®



Sterling 4011



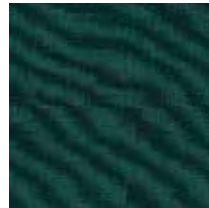
Storm 4002



Sunkist 2012



Taupe 0009



Teal 2100



Titanium 4010



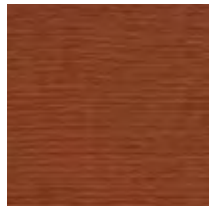
Tomato 2096



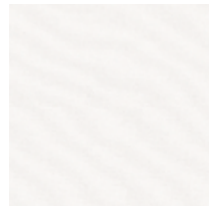
Turquoise 3001



Ultra Violet 2104



Umber 1014




White 2089



Wine 2064

We do not keep this material in stock. We order the required quantity for specific orders and therefore the lead time can be longer depending on the manufacturer's delivery terms.


■ Ginkgo  

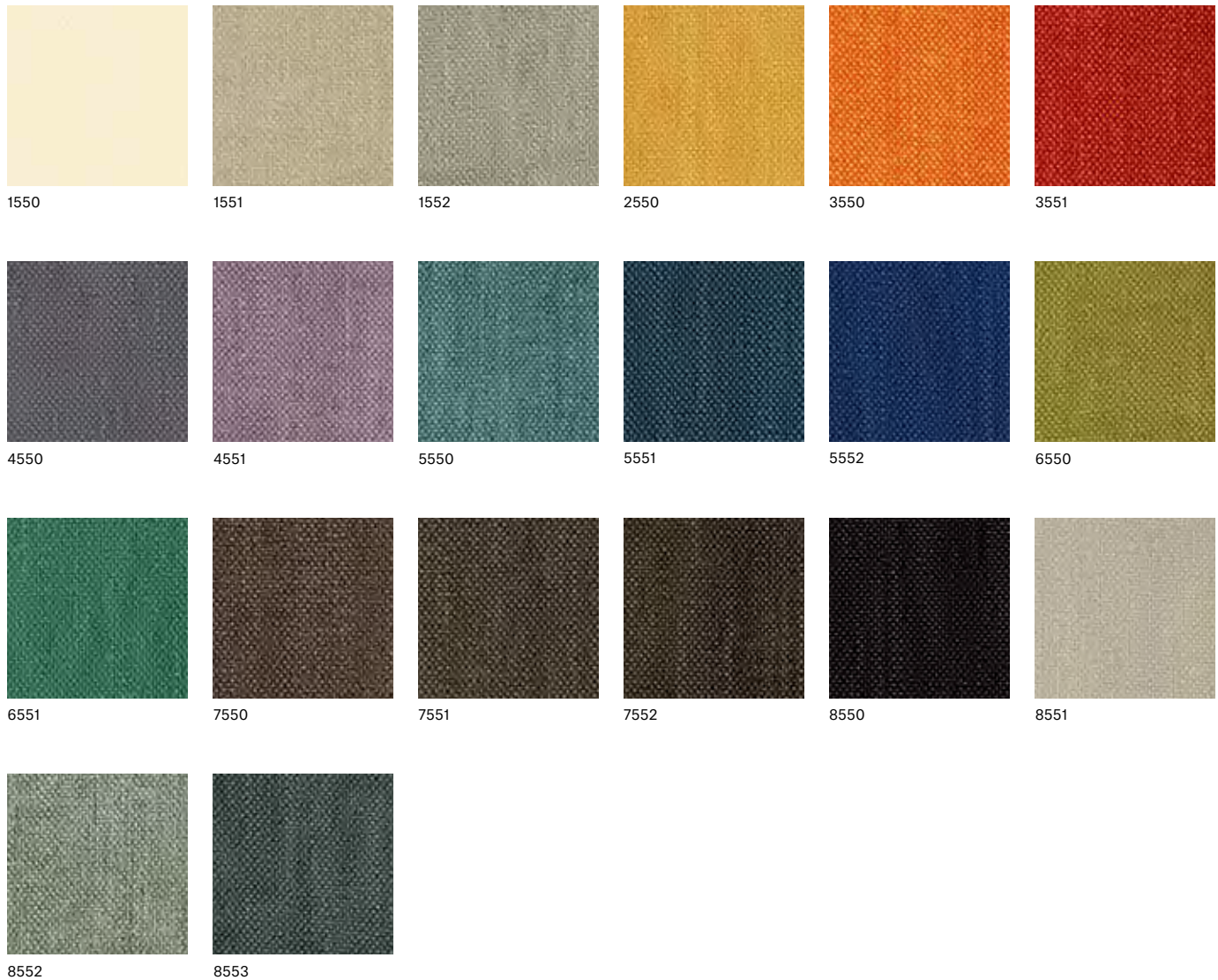
| Composition | Width | Abrasion resistance | Pilling | Flame retardancy | Ecology | Cleaning |
|------------------------|--------|---------------------|---------|---|---------|---|
| surface 100% vinyl | 140 cm | 150 000 MD | — | BS 5852 Crib 5 California TB117-2013 DIN 4102 Class B2 EN 1021 Part 1 & 2 NF 92503 Class M1 NF P 92504 Class M1 Önorm A 3800-1 Class Q1 Önorm B 3825 | REACH |  |
| surface 100% cotton | | | | | | |

The artificial leather Ginkgo can be ordered in all colour shades according to the manufacturer's swatches.

Category C


■ Ambra ⊕ ⊗

| Composition | Width | Abrasion resistance | Pilling | Flame retardancy | Ecology | Cleaning |
|----------------|--------|---------------------|---------|---|---------|---|
| 100% polyester | 134 cm | 60 000 MD | 5 | BS 5852 Crib 5 California TB117-2013 EN 1021 Part 1 & 2 | — |  |



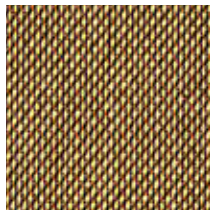
Category C

■ Garda 

| Composition | Width | Abrasion resistance | Pilling | Flame retardancy | Ecology | Cleaning |
|------------------|--------|---------------------|---------|--|----------|---|
| 100% Trevira® CS | 140 cm | 80 000 MD | 5 | BS 5852 Crib 5 California TB117-2013 DIN 4102 Class B1 EN 1021 Class 1 & 2 NF 92503 Class M1 ÖNORM A 3800-1 Class B1,Q1,TR1 ÖNORM B 3825 | Oeko-Tex |  |



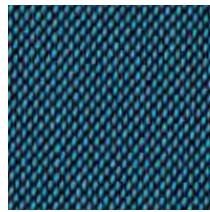
9301



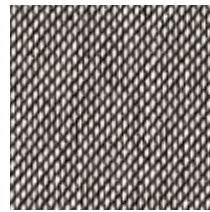
9307



9406




9616



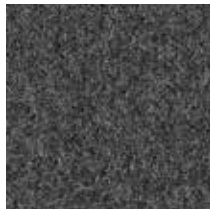
9808

■ Lowlands Plain

| Composition | Width | Abrasion resistance | Pilling | Flame retardancy | Ecology | Cleaning |
|--------------------------------|--------|---------------------|---------|---|---------|---|
| 70% virgin wool, 30% polyamide | 140 cm | 190 000 MD | 3 | BS 5852 Crib 5 California TB117-2013 EN 1021 Part 1 & 2 | REACH |  |



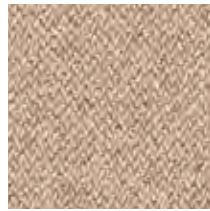
513



516



521



524



529



531



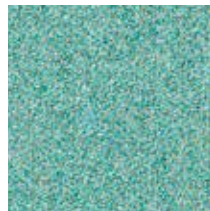
541



542



562



571



572




581



585

Category D

■ Dante

| Composition | Width | Abrasion resistance | Pilling | Flame retardancy | Ecology | Cleaning |
|-------------------------------|--------|---------------------|---------|--|----------------------------|---|
| 95% virgin wool, 5% polyamide | 140 cm | 52 000 MD | 4-5 | BS 5852 Crib 5 California TB117-2013 DIN 4102 Class B2 EN 1021 Part 1 & 2 | RAL-UZ 117 Appendix 2+3 |  |



black



chrom




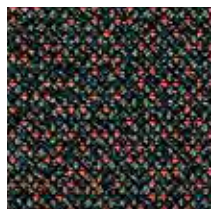
lanoso



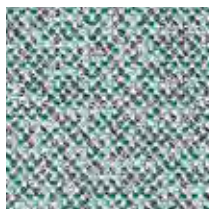
snow

■ Mica

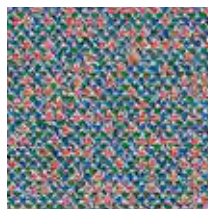
| Composition | Width | Abrasion resistance | Pilling | Flame retardancy | Ecology | Cleaning |
|-------------------------------|--------|---------------------|---------|--|----------------------------|---|
| 95% virgin wool, 5% polyamide | 140 cm | 50 000 MD | 4-5 | BS 5852 Crib 5 California TB117-2013 DIN 4102 Class B2 EN 1021 Part 1 & 2 | RAL-UZ 117 Appendix 2+3 |  |



arion




aqua



papillon

Category D

■ Milkyway 

| Composition | Width | Abrasion resistance | Pilling | Flame retardancy | Ecology | Cleaning |
|-------------------------------|--------|---------------------|---------|--|----------------------------|---|
| 94% virgin wool, 6% polyamide | 150 cm | 70 000 MD | 5 | BS 5852 Crib 5 California TB117-2013 DIN 4102 Class B2 EN 1021 Part 1 & 2 | RAL-UZ 117 Appendix 2+3 |  |



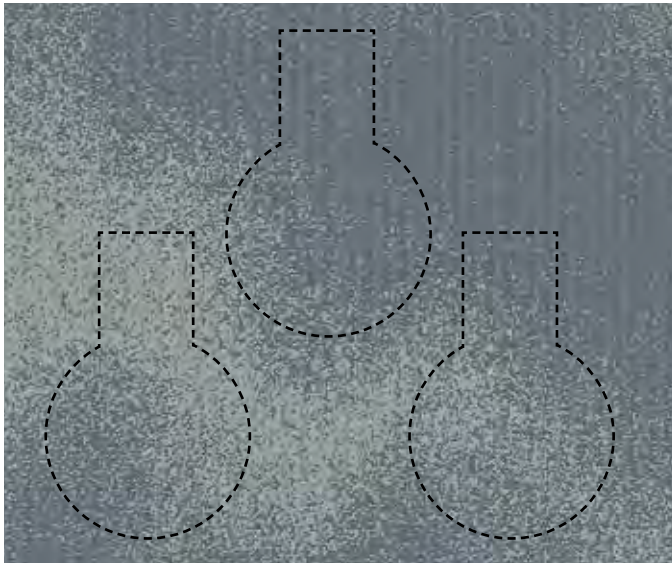
powder



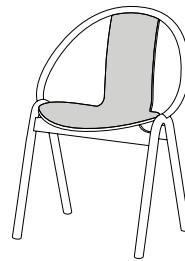
jade



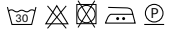
shadow

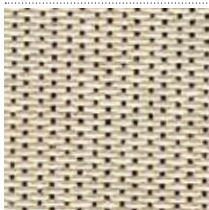


■ A high-quality fabric made from wool featuring the cosmic pattern of the Milky Way. Given the changing nature of the pattern, which repeats every three meters, each upholstered piece of furniture is an original – yet clearly part of the celestial colour scheme.

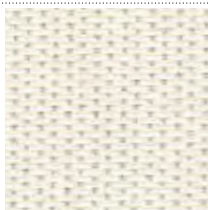


■ Sand

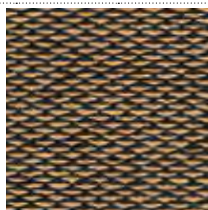
| Composition | Width | Abrasion resistance | Pilling | Flame retardancy | Ecology | Cleaning |
|------------------|--------|---------------------|---------|--|----------|---|
| 100% Trevira® CS | 140 cm | 50 000 MD | 4 | BS 5852 Crib 5 California TB117-2013 DIN 4102 Class B1 EN 1021 Part 1 & 2 NF P 92504 Class M1 NF P 92507 Class M1 ÖNORM B 3825 | Oeko-Tex |  |



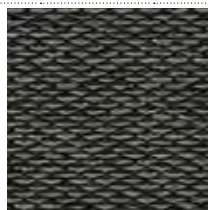
01/90



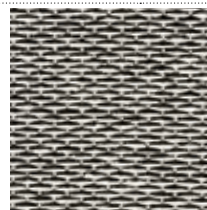
02/00



06/78




07/88

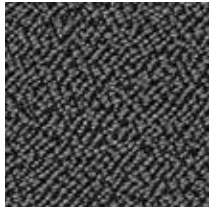


10/80

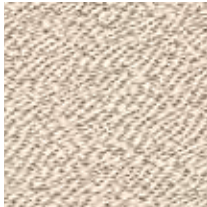
Category D

■ Sera 

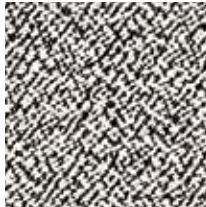
| Composition | Width | Abrasion resistance | Pilling | Flame retardancy | Ecology | Cleaning |
|-------------------------------|--------|---------------------|---------|--|----------------------------|---|
| 94% virgin wool, 6% polyamide | 140 cm | 122 000 MD | 4-5 | BS 5852 Crib 5 California TB117-2013 DIN 4102 Class B2 EN 1021 Part 1 & 2 | RAL-UZ 117 Appendix 2+3 |  |



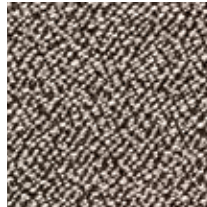
anthrazit



calla




pepper



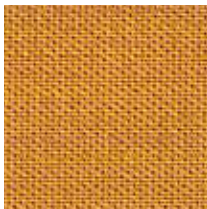
walnut

■ Topia 

| Composition | Width | Abrasion resistance | Pilling | Flame retardancy | Ecology | Cleaning |
|-------------------------------|--------|---------------------|---------|--|----------------------------|---|
| 95% virgin wool, 5% polyamide | 150 cm | 50 000 MD | 4-5 | BS 5852 Crib 5 California TB117-2013 DIN 4102 Class B2 EN 1021 Part 1 & 2 | RAL-UZ 117 Appendix 2+3 |  |



bronze



curry



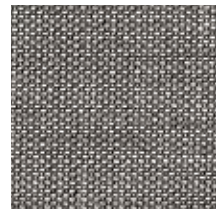
heart



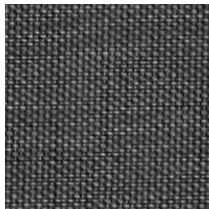
messing



orion



platin

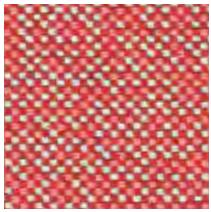


schiefer

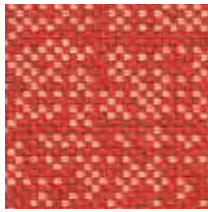
Category D

Walker

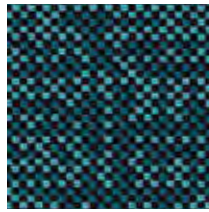
| Composition | Width | Abrasion resistance | Pilling | Flame retardancy | Ecology | Cleaning |
|------------------|--------|---------------------|---------|--|----------|----------|
| 100% Trevira® CS | 150 cm | 45 000 MD | 5 | BS 5852 Crib 5 California TB117-2013 DIN 4102 Class B1 EN 1021 Class 1 & 2 ISO 8191 Part 1 & 2 NF P 92503 M1 NF P 92507 M1 | Oeko-Tex | |



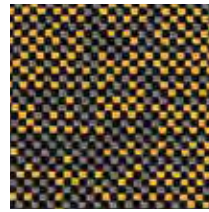
01



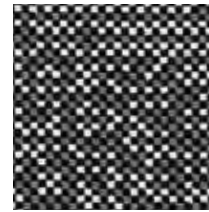
10



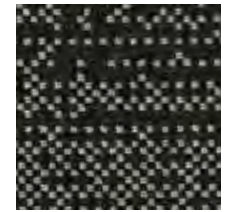
40



68



80



88

Category E

Alcantara® Avant

| Composition | Width | Abrasion resistance | Pilling | Flame retardancy | Ecology | Cleaning |
|---------------------------------|--------|---------------------|---------|--------------------------------------|----------|----------|
| 68% polyester, 32% polyurethane | 142 cm | 150 000 MD | — | BS 5852 Crib 5 EN 1021 Part 1 & 2 | Oeko-Tex | |

Included in this price group is Alcantara fabric, which can be ordered in all colours listed in the manufacturer's sample book. We do not keep this material in stock. We order the required quantity

for specific orders and therefore the lead time can be longer depending on the manufacturer's delivery terms.

Category 1

■ MDR

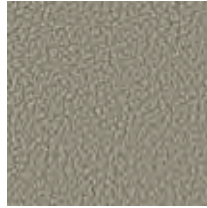
| Type of leather | Size | Thickness | Flame retardancy | Ecology | Cleaning |
|-------------------|--------------------|--------------|---|---------|----------|
| pigmented leather | ± 4 m ² | 0,80-1,00 mm | BS 5852 Part 0 & 1 California TB117-2013 EN 1021 Part 1 & 2 | REACH | |



0000



31174



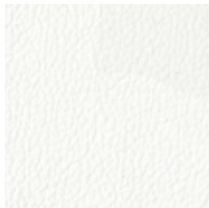
70386



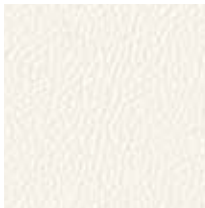
71295

■ Prince

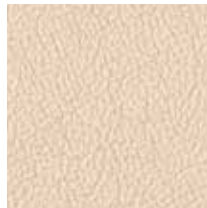
| Type of leather | Size | Thickness | Flame retardancy | Ecology | Cleaning |
|-------------------|----------------------|-----------|--|---------|----------|
| pigmented leather | ± 3,9 m ² | 0,90-1 mm | BS 5852 Part 0 & 1 EN 1021 Part 1 & 2 | REACH | |



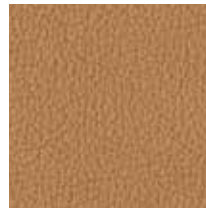
171



179



180



188

Category 2

■ Elmotique

| Type of leather | Size | Thickness | Flame retardancy | Ecology | Cleaning |
|-----------------|--------------------|--------------|--|---------|----------|
| aniline leather | ± 5 m ² | 1,00-1,20 mm | California TB117-2013 EN 1021 Part 1 & 2 ISO 8191 Part 1 & 2 | REACH | |



43024



43807



93957



99001

■ Elmosoft

| Type of leather | Size | Thickness | Flame retardancy | Ecology | Cleaning |
|----------------------|--------------------|--------------|--|---------|----------|
| semi-aniline leather | ± 5 m ² | 1,10-1,30 mm | BS 5852 Crib 5 California TB117-2013 DIN 4102 Class B1 EN 1021 Part 1 & 2 ISO 8191 Part 1 & 2 NF P 92503 Class M2 ÖNORM B 3825 | REACH | |

Elmosoft leather can be ordered in all colour shades according to the manufacturer's swatches.