

## STOCKHOLM BARSTOOL

M TON

D MADSK. JOHANSEN

This barstool from the Stockholm series combines elements of Scandinavian design with TON's technology. The seat of this model is made of bent plywood and the specific craftsmanship of the beech wood ensures that its visually fine shapes and frame provide sufficient strength.



W 16.9"/17.3" x D 15"/16.9" x H 24"/31.4"

### FRAME

BEECH  
OAK

VARIOUS COLORS

### SEAT

BEECH VENEER  
OAK VENEER

VARIOUS COLORS

### UPHOLSTERY

FABRIC  
LEATHER

VARIOUS COLORS



NATURAL FINISHES



NATURAL BEECH  
lacquer/oil



NATURAL OAK  
lacquer/oil

COLORED OIL



W115 OIL SMOKY WHITE  
beech/oak



W660 OIL BARK BROWN  
beech/oak



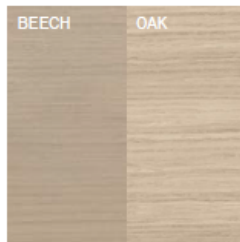
W685 OIL EARTHY BROWN  
beech/oak



W520 OIL MISTY GREEN  
beech/oak



W170 OIL STONE GREY  
beech/oak



Colour difference  
between beech and oak  
in W115 OIL SMOKY  
WHITE

STAINS



B4 COFFEE  
beech/oak



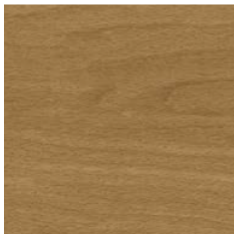
B105 DARK WENGE  
beech/oak



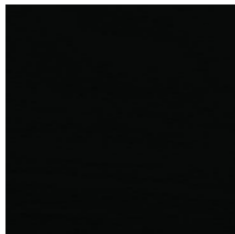
B112 DARK CHOCOLATE  
beech/oak



B114 NOUGAT  
beech/oak



B116 HONEY  
beech



B123 BLACK GRAIN  
beech/oak



B580 FOREST GREEN  
beech/oak

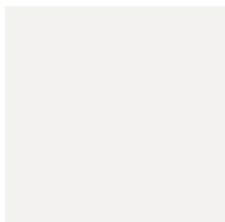


S110 LIGHT WHITE  
beech/oak

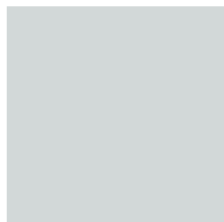


Colour difference  
between beech and oak  
in S110 LIGHT WHITE

PIGMENTED COLORS



C120 WHITE  
beech/oak



C139 CLOUD GREY  
beech/oak



C150 MOON GREY  
beech/oak



C180 GREY SHADOW  
beech/oak



C250 STEAM BLUE  
beech/oak



C270 GRAPHITE BLUE  
beech/oak



C350 FACTORY RED  
beech/oak



C450 RESIN YELLOW  
beech/oak



C540 PEBBLE GREEN  
beech/oak



C570 DEEP GREEN  
beech/oak




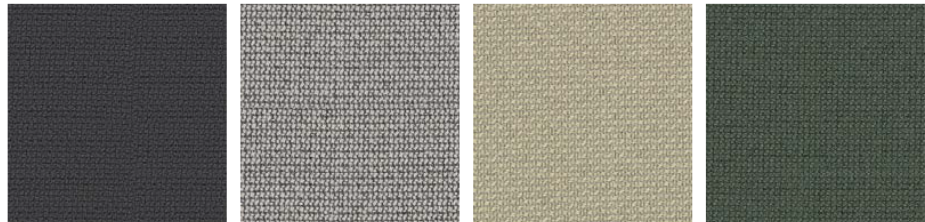
C610 MOCCA BEIGE  
beech/oak



CATEGORY A


● CURA

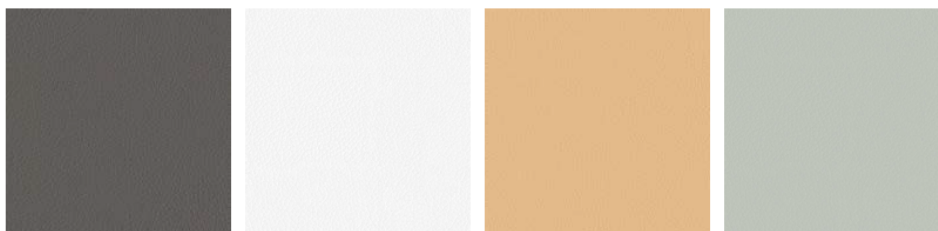
Composition	Width	Abrasion resistance	Pilling	Flame retardancy	Ecology	Cleaning
100% recycled polyester	140 cm	100 000 MD	4-5	EN 1021 Class 1 & 2 CAL TB 117 - 2013	OEKO-TEX® EU Ecolabel	 100% RECYCLED



60019      60112      62125      68182

● GRAIN

Composition	Width	Abrasion resistance	Pilling	Flame retardancy	Ecology	Cleaning
surface: 94% polyurethane, 6% silicone underlay: 100% polyester	140 cm	200 000 MD		BS 5852 Part 1 CAL TB 117-2013 EN 1021 Part 1 & 2	REACH	 ANTIMICROBIAL RESISTANCE TO STAINS




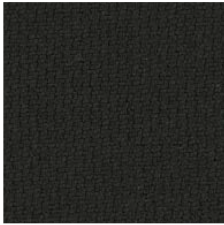
ARCILLA      BLANCO      CANELA      CENIZA



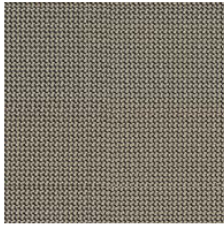
COGNAC      MARRON      NEGRO

● RENEWED LOOP

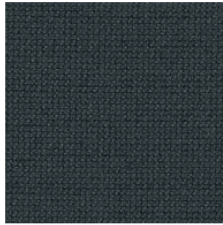
Composition	Width	Abrasion resistance	Pilling	Flame retardancy	Ecology	Cleaning
100% recycled polyester, contains 3-10% textile residues	140 cm	100 000 MD	4-5	EN 1021 Class 1 & 2 CAL TB 117 - 2013	OEKO-TEX® EU Ecolabel	 100% RECYCLED



60999




61280

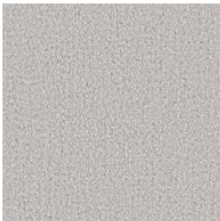


66257

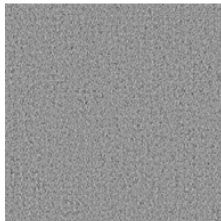
CATEGORY B

● LOWLANDS

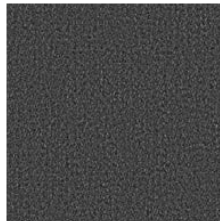
Composition	Width	Abrasion resistance	Pilling	Flame retardancy	Ecology	Cleaning
70% recycled wool, 30% polyamide	140 cm	190 000 MD	3	BS 5852 Crib 5 EN 1021 Class 1 & 2 CAL TB 117 - 2013	OEKO-TEX® REACH	 70% RECYCLED



511



513



516



521



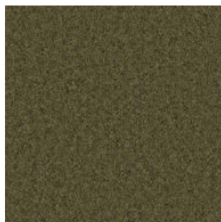
526



529



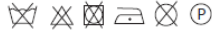
550

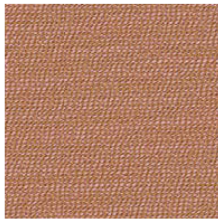


575

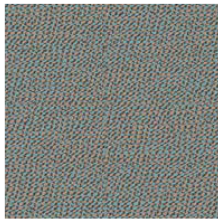
CATEGORY C

● ARCO

Composition	Width	Abrasion resistance	Pilling	Flame retardancy	Ecology	Cleaning
95% virgin wool 5% polyamide	140 cm	70 000 MD	4-5	DIN EN 1021-1/ -2 UNI 9175 1 IM	REACH AB 2998	 MARITIME SECTOR



BLOSSOM



COAST



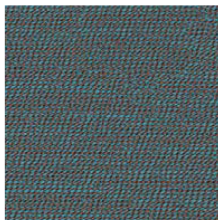
EBONY



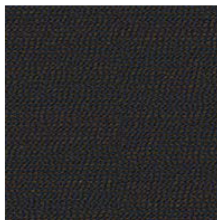
ICE



JASMIN




POND



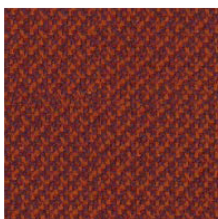
SECRET

● CLEO

Composition	Width	Abrasion resistance	Pilling	Flame retardancy	Ecology	Cleaning
95% virgin wool, 5% polyamide	140 cm	70 000 MD	4-5	BS 5852 Part 1 CAL TB 117 - 2013 DIN EN 1021-1/-2 ÖNORM B1/Q1 UNI 9175 1 IM	REACH AB 2998	 MARITIME SECTOR



COAL



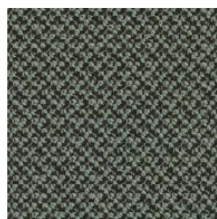
LAMPION



MAGMA



PEARL



SALBEI




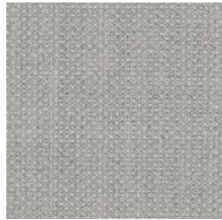
WALNUT



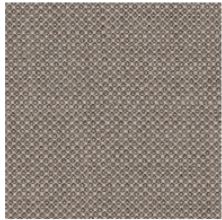
CATEGORY D

● FIORD 2

Composition	Width	Abrasion resistance	Pilling	Flame retardancy	Ecology	Cleaning
92% virgin wool, 8% nylon	140 cm	60 000 MD	4-5	BS 5852 Part 1 EN 1021 Class 1 & 2 CAL TB 117 - 2013 ÖNORM B1/Q1 UNI 9175 1 IM	EU Ecolabel	 MARITIME SECTOR



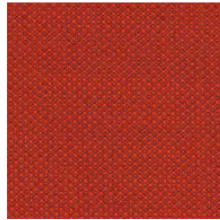
0201



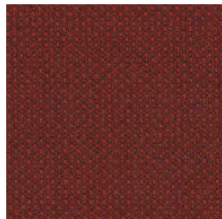
0262



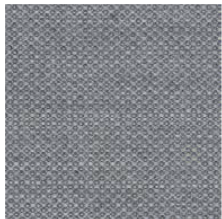
0422



0571



0581



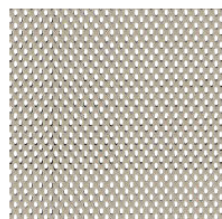
0751



0961

POLO

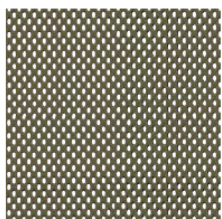
Composition	Width	Abrasion resistance	Pilling	Flame retardancy	Ecology	Cleaning
100% polyester	150 cm	100 000 MD	5		OEKO-TEX®	



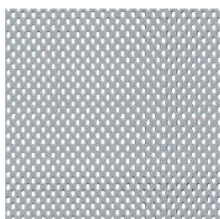
BEIGE



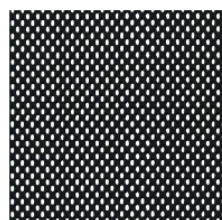
BLEU



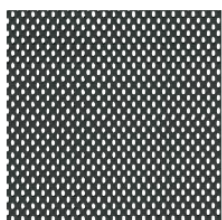
CASTORO



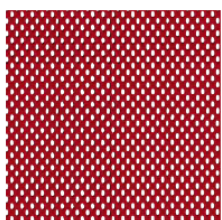
GRIGIO



NERO



PIOMBO



ROSSO


Polo is an airy textile mesh which is used for back part of Chips lounge chair. It can also be used to upholster the backs and seats of, for example, a classic range of bentwood furniture.

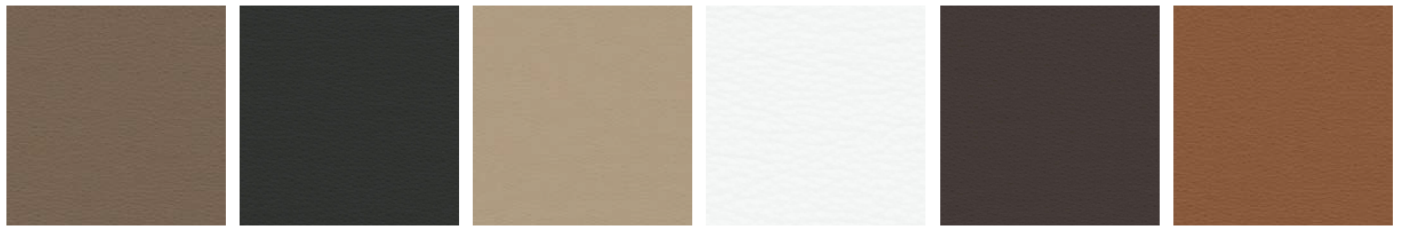
If used on a seat the Polo mesh is always combined with special underlay material for increased durability.



CATEGORY 1

● PRESCOTT

Composition	Width	Leather thickness	Flame retardancy	Ecology	Cleaning
semi-aniline leather	4.8-5.0 m <sup>2</sup>	1.2-1.4 mm	CAL TB 117 - 2013 BS 5852:1979 BS EN 1021-1-2:2006	REACH	 MARITIME SECTOR



ANTILOP

BLACK INK

CLAY


DASH

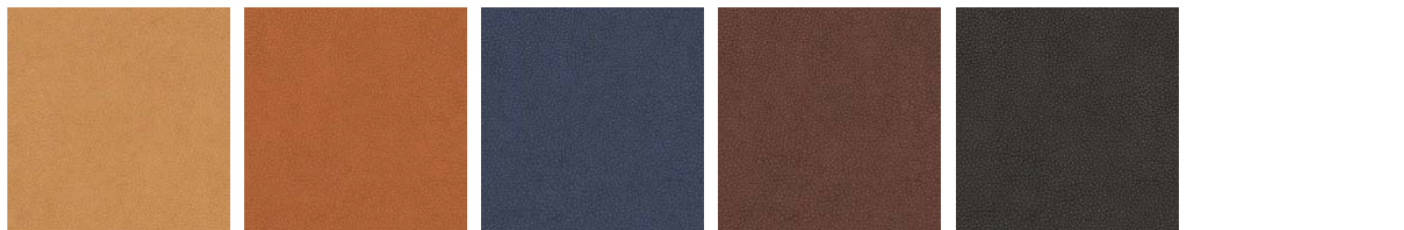
ROOT

SWAMP

CATEGORY 2

● ELMOTIQUE

Composition	Width	Leather thickness	Flame retardancy	Ecology	Cleaning
aniline leather	±4.8 m <sup>2</sup>	1.00-1.20 mm	CAL TB 117 - 2013 ISO 8191 Class 1 & 2 EN 1021 Class 1 & 2	REACH	



43024

43807

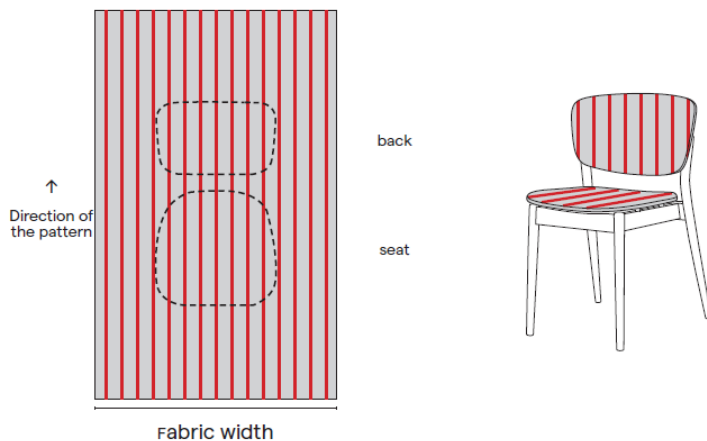
77875

93957

99001

## CUSTOMER'S OWN MATERIAL

If our range of upholstery materials does not meet your needs, you can provide your own material. The required amount of material as stated in the price list is calculated per piece on orders of more than 10 pieces. For orders of 1 to 10 pieces, the required amount should be consulted with a sales representative. For fabrics and vinyls, the calculation in the price list is based on material width of 140 cm. If you have a material with a different width, we recommend that you contact a sales representative to confirm the amount of material required. When upholstering furniture we work with the customary direction of a pattern, which can influence the final look of the upholstery. When supplying fabric with a distinctive pattern, we recommend that customers consult with us in advance to agree on the way the pattern is to be used.



Fabrics, artificial leathers and natural leathers should be sent in rolls only. Artificial leather and natural leather in particular can be subject to deformation when folded and such damage can be irreversible!



In case of COM, mark distinctly what shall be the face side. If the customer's fabric is chequered, striped or is of another special design which can be upholstered both horizontally and vertically, indicate how you wish to place the design on the seat and backrest. In this case, the material consumption can be higher than expected. If the face side or the direction of upholstering is not marked, we reserve the right to determine it by ourselves.



Regarding upholstery with customer's own material (COM), we reserve the right to refuse any material which is not suitable for upholstery of our seating furniture or is not delivered in the requested state.

## DECORATIVE NAILS

Upholstery of selected models can be complemented by decorative nails, especially if upholstered with artificial or natural leather. Antique bronze is our standard nail. Surcharge for decorative nails is listed for applicable models in the price list.



Please note that small fragments of plastic material that was used to position the nails may appear around the decorative nails.

## GLIDES

Felt glides



Teflon glide

