

PUNTON STOOL

M TON
D TOM KELLEY

This low stool supplements the Punton chair and barstool. The round seat is held by four straight beech legs. Its clean design allows universal use in a variety of interiors.



W 15.7" x D 15.7" x H 18.1"

MATERIAL
BEECH



NATURAL FINISHES



NATURAL BEECH
lacquer/oil

COLORED OIL



W115 OIL SMOKY WHITE
beech/oak



W660 OIL BARK BROWN
beech/oak



W685 OIL EARTHY BROWN
beech/oak



W520 OIL MISTY GREEN
beech/oak



W170 OIL STONE GREY
beech/oak

STAINS



B4 COFFEE
beech/oak



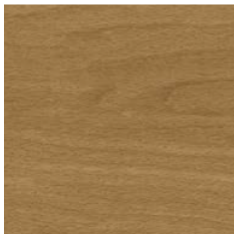
B105 DARK WENGE
beech/oak



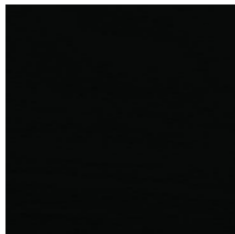
B112 DARK CHOCOLATE
beech/oak



B114 NOUGAT
beech/oak



B116 HONEY
beech



B123 BLACK GRAIN
beech/oak

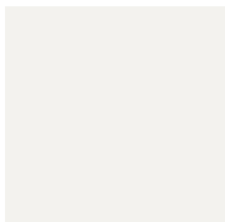


B580 FOREST GREEN
beech/oak

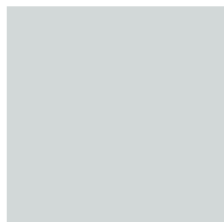


S110 LIGHT WHITE
beech/oak

PIGMENTED COLORS



C120 WHITE
beech/oak



C139 CLOUD GREY
beech/oak



C150 MOON GREY
beech/oak



C180 GREY SHADOW
beech/oak



C250 STEAM BLUE
beech/oak



C270 GRAPHITE BLUE
beech/oak



C350 FACTORY RED
beech/oak



C450 RESIN YELLOW
beech/oak



C540 PEBBLE GREEN
beech/oak




C570 DEEP GREEN
beech/oak

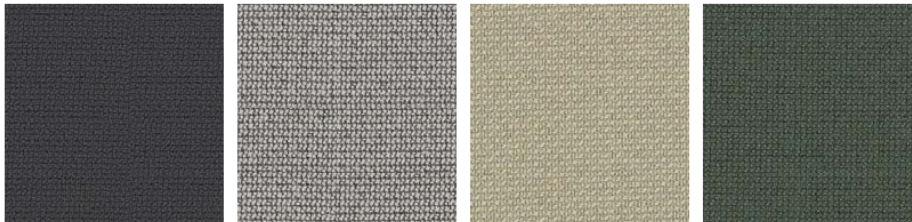


C610 MOCCA BEIGE
beech/oak

CATEGORY A


● CURA

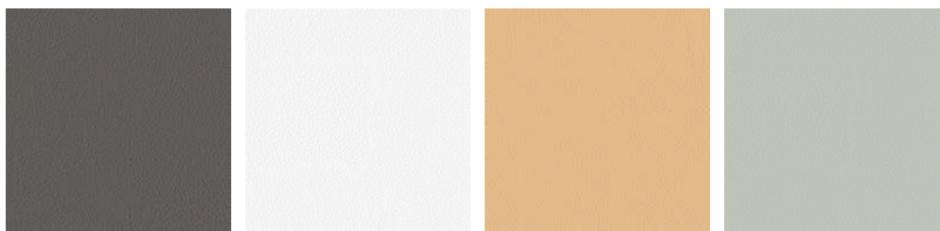
| Composition | Width | Abrasion resistance | Pilling | Flame retardancy | Ecology | Cleaning |
|-------------------------|--------|---------------------|---------|------------------------------------------|--------------------------|------------------------------------------------------------------------------------------------------|
| 100% recycled polyester | 140 cm | 100 000 MD | 4-5 | EN 1021 Class 1 & 2 CAL TB 117 - 2013 | OEKO-TEX® EU Ecolabel |  100% RECYCLED |



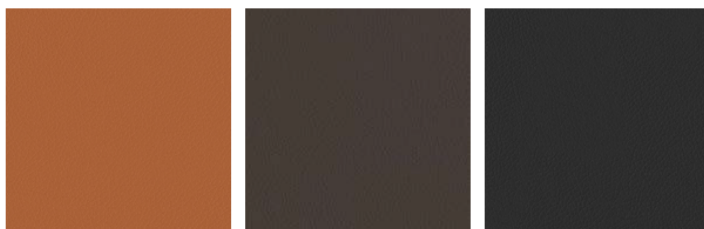
60019 60112 62125 68182

● GRAIN

| Composition | Width | Abrasion resistance | Pilling | Flame retardancy | Ecology | Cleaning |
|------------------------------------------------------------------------------|--------|---------------------|---------|---------------------------------------------------------|---------|--------------------------------------------------------------------------------------------------------------------------------|
| surface: 94% polyurethane, 6% silicone; underlay: 100% polyester | 140 cm | 200 000 MD | | BS 5852 Part 1 CAL TB 117-2013 EN 1021 Part 1 & 2 | REACH |  ANTIMICROBIAL RESISTANCE TO STAINS |




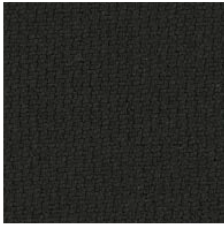
ARCILLA BLANCO CANELA CENIZA



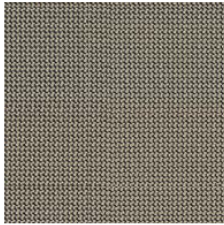
COGNAC MARRON NEGRO

● RENEWED LOOP

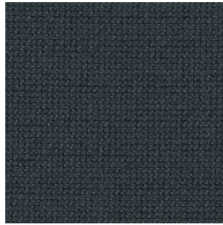
| Composition | Width | Abrasion resistance | Pilling | Flame retardancy | Ecology | Cleaning |
|----------------------------------------------------------|--------|---------------------|---------|------------------------------------------|--------------------------|------------------------------------------------------------------------------------------------------|
| 100% recycled polyester, contains 3-10% textile residues | 140 cm | 100 000 MD | 4-5 | EN 1021 Class 1 & 2 CAL TB 117 - 2013 | OEKO-TEX® EU Ecolabel |  100% RECYCLED |



60999




61280

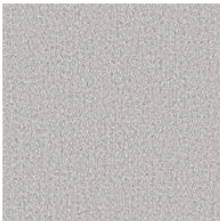


66257

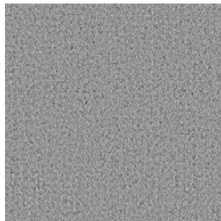
CATEGORY B

● LOWLANDS

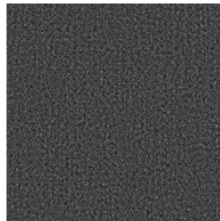
| Composition | Width | Abrasion resistance | Pilling | Flame retardancy | Ecology | Cleaning |
|----------------------------------|--------|---------------------|---------|------------------------------------------------------------|--------------------|-------------------------------------------------------------------------------------------------------|
| 70% recycled wool, 30% polyamide | 140 cm | 190 000 MD | 3 | BS 5852 Crib 5 EN 1021 Class 1 & 2 CAL TB 117 - 2013 | OEKO-TEX® REACH |  70% RECYCLED |



511



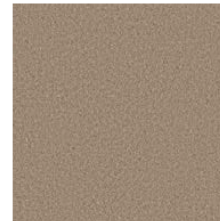
513



516



521



526



529



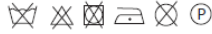
550

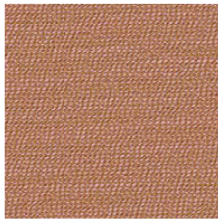


575

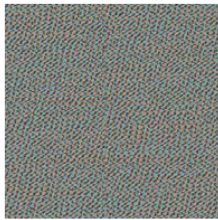
CATEGORY C

● ARCO

| Composition | Width | Abrasion resistance | Pilling | Flame retardancy | Ecology | Cleaning |
|---------------------------------|--------|---------------------|---------|------------------------------------|------------------|--------------------------------------------------------------------------------------------------------|
| 95% virgin wool 5% polyamide | 140 cm | 70 000 MD | 4-5 | DIN EN 1021-1/ -2 UNI 9175 1 IM | REACH AB 2998 |  MARITIME SECTOR |



BLOSSOM



COAST



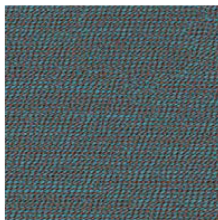
EBONY



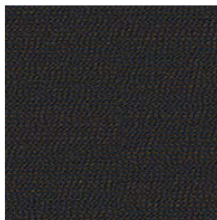
ICE



JASMIN




POND



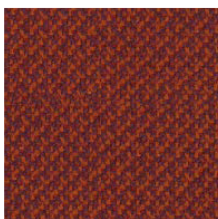
SECRET

● CLEO

| Composition | Width | Abrasion resistance | Pilling | Flame retardancy | Ecology | Cleaning |
|----------------------------------|--------|---------------------|---------|-----------------------------------------------------------------------------------------|------------------|----------------------------------------------------------------------------------------------------------|
| 95% virgin wool, 5% polyamide | 140 cm | 70 000 MD | 4-5 | BS 5852 Part 1 CAL TB 117 - 2013 DIN EN 1021-1/-2 ÖNORM B1/Q1 UNI 9175 1 IM | REACH AB 2998 |  MARITIME SECTOR |



COAL



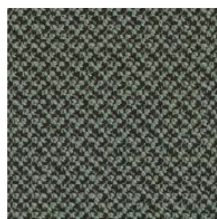
LAMPION



MAGMA



PEARL




SALBEI

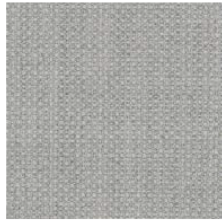


WALNUT

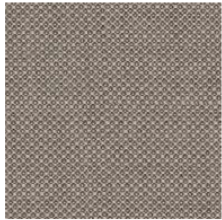
CATEGORY D

● FIORD 2

| Composition | Width | Abrasion resistance | Pilling | Flame retardancy | Ecology | Cleaning |
|------------------------------|--------|---------------------|---------|--------------------------------------------------------------------------------------------|-------------|--------------------------------------------------------------------------------------------------------|
| 92% virgin wool, 8% nylon | 140 cm | 60 000 MD | 4-5 | BS 5852 Part 1 EN 1021 Class 1 & 2 CAL TB 117 - 2013 ÖNORM B1/Q1 UNI 9175 1 IM | EU Ecolabel |  MARITIME SECTOR |



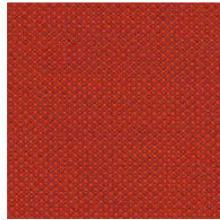
0201



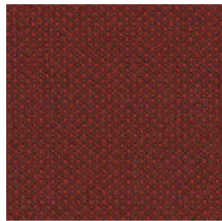
0262



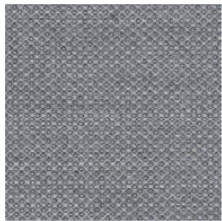
0422



0571



0581



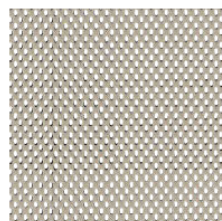
0751



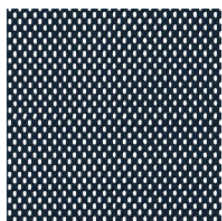
0961

POLO

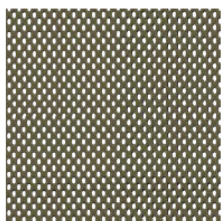
| Composition | Width | Abrasion resistance | Pilling | Flame retardancy | Ecology | Cleaning |
|----------------|--------|---------------------|---------|------------------|-----------|---------------------------------------------------------------------------------------|
| 100% polyester | 150 cm | 100 000 MD | 5 | | OEKO-TEX® |  |



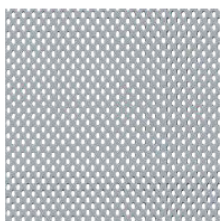
BEIGE



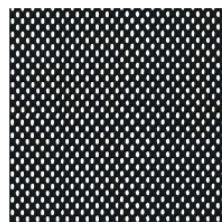
BLEU



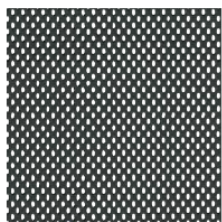
CASTORO



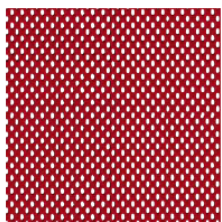
GRIGIO



NERO



PIOMBO




ROSSO

Polo is an airy textile mesh which is used for back part of Chips lounge chair. It can also be used to upholster the backs and seats of, for example, a classic range of bentwood furniture.

If used on a seat the Polo mesh is always combined with special underlay material for increased durability.

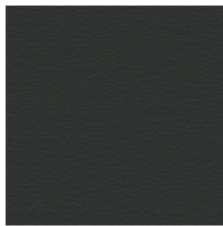
CATEGORY 1

● PRESCOTT

| Composition | Width | Leather thickness | Flame retardancy | Ecology | Cleaning |
|----------------------|------------------------|-------------------|----------------------------------------------------------|---------|--------------------------------------------------------------------------------------------------------|
| semi-aniline leather | 4.8-5.0 m ² | 1.2-1.4 mm | CAL TB 117 - 2013 BS 5852:1979 BS EN 1021-1-2:2006 | REACH |  MARITIME SECTOR |



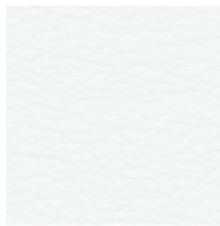
ANTILOP



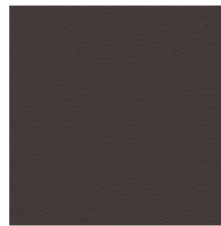
BLACK INK



CLAY



DASH




ROOT



SWAMP

CATEGORY 2

● ELMOTIQUE

| Composition | Width | Leather thickness | Flame retardancy | Ecology | Cleaning |
|-----------------|---------------------|-------------------|------------------------------------------------------------------|---------|---------------------------------------------------------------------------------------|
| aniline leather | ±4.8 m ² | 1.00-1.20 mm | CAL TB 117 - 2013 ISO 8191 Class 1 & 2 EN 1021 Class 1 & 2 | REACH |  |



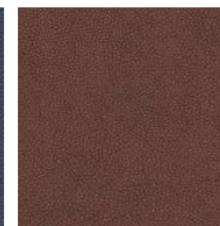
43024



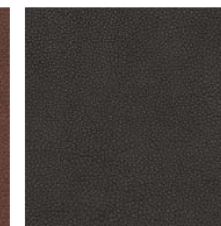
43807



77875



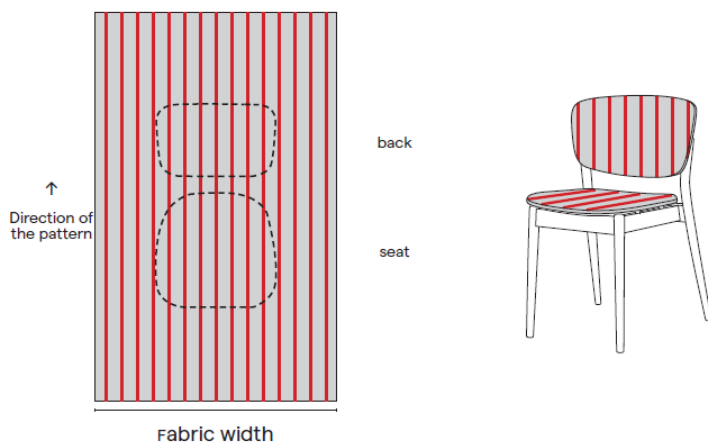
93957



99001

CUSTOMER'S OWN MATERIAL

If our range of upholstery materials does not meet your needs, you can provide your own material. The required amount of material as stated in the price list is calculated per piece on orders of more than 10 pieces. For orders of 1 to 10 pieces, the required amount should be consulted with a sales representative. For fabrics and vinyls, the calculation in the price list is based on material width of 140 cm. If you have a material with a different width, we recommend that you contact a sales representative to confirm the amount of material required. When upholstering furniture we work with the customary direction of a pattern, which can influence the final look of the upholstery. When supplying fabric with a distinctive pattern, we recommend that customers consult with us in advance to agree on the way the pattern is to be used.



Fabrics, artificial leathers and natural leathers should be sent in rolls only. Artificial leather and natural leather in particular can be subject to deformation when folded and such damage can be irreversible!



In case of COM, mark distinctly what shall be the face side. If the customer's fabric is chequered, striped or is of another special design which can be upholstered both horizontally and vertically, indicate how you wish to place the design on the seat and backrest. In this case, the material consumption can be higher than expected. If the face side or the direction of upholstering is not marked, we reserve the right to determine it by ourselves.



Regarding upholstery with customer's own material (COM), we reserve the right to refuse any material which is not suitable for upholstery of our seating furniture or is not delivered in the requested state.

DECORATIVE NAILS

Upholstery of selected models can be complemented by decorative nails, especially if upholstered with artificial or natural leather. Antique bronze is our standard nail. Surcharge for decorative nails is listed for applicable models in the price list.



Please note that small fragments of plastic material that was used to position the nails may appear around the decorative nails.

GLIDES

Felt glides



Teflon glide

