

MERANO LOUNGE CHAIR

M TON
D ALEXANDER GUFLER

Just like other models in this collection, the Merano lounge armchair also combines solid wood legs with bent plywood in the seat and armrest. This time, the typical shapes of the backrest and armrest have been joined into a single piece, with comfortable upholstery on the interior.



W 19.3" x D 19.7" x H 27.6"
SEAT HEIGHT 16.1"
ARMREST HEIGHT 21.7"

MATERIAL

BEECH
OAK
WALNUT



NATURAL FINISHES



NATURAL BEECH
lacquer/oil



NATURAL OAK
lacquer/oil



NATURAL AMERICAN
WALNUT
oil

COLORED OIL



W115 OIL SMOKY WHITE
beech/oak



W660 OIL BARK BROWN
beech/oak



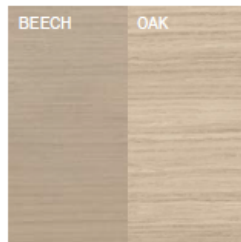
W685 OIL EARTHY BROWN
beech/oak



W520 OIL MISTY GREEN
beech/oak

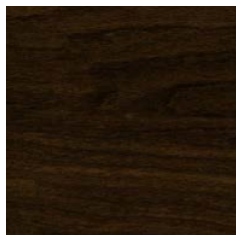


W170 OIL STONE GREY
beech/oak

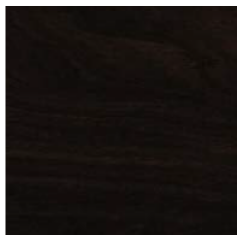


BEECH OAK
Colour difference
between beech and oak
in W115 OIL SMOKY
WHITE

STAINS



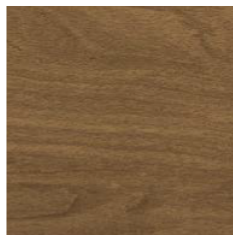
B4 COFFEE
beech/oak



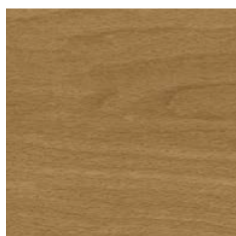
B105 DARK WENGE
beech/oak



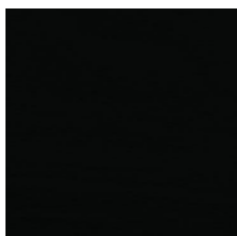
B112 DARK CHOCOLATE
beech/oak



B114 NOUGAT
beech/oak



B116 HONEY
beech



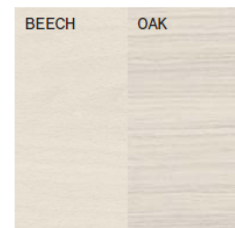
B123 BLACK GRAIN
beech/oak



B580 FOREST GREEN
beech/oak

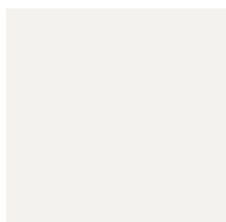


S110 LIGHT WHITE
beech/oak

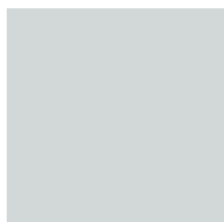


Colour difference
between beech and oak
in S110 LIGHT WHITE

PIGMENTED COLORS



C120 WHITE
beech/oak



C139 CLOUD GREY
beech/oak



C150 MOON GREY
beech/oak



C180 GREY SHADOW
beech/oak



C250 STEAM BLUE
beech/oak



C270 GRAPHITE BLUE
beech/oak



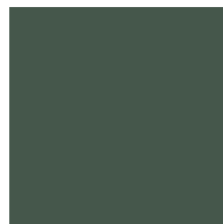
C350 FACTORY RED
beech/oak



C450 RESIN YELLOW
beech/oak



C540 PEBBLE GREEN
beech/oak




C570 DEEP GREEN
beech/oak

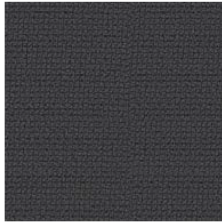


C610 MOCCA BEIGE
beech/oak

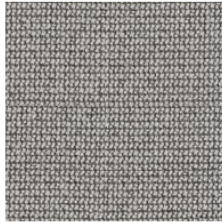
CATEGORY A

● CURA

Composition	Width	Abrasion resistance	Pilling	Flame retardancy	Ecology	Cleaning
100% recycled polyester	140 cm	100 000 MD	4-5	EN 1021 Class 1 & 2 CAL TB 117 - 2013	OEKO-TEX® EU Ecolabel	 100% RECYCLED



60019



60112




62125



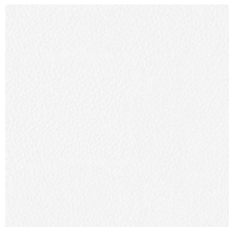
68182

● GRAIN

Composition	Width	Abrasion resistance	Pilling	Flame retardancy	Ecology	Cleaning
surface: 94% polyurethane, 6% silicone: underlay: 100% polyester	140 cm	200 000 MD		BS 5852 Part 1 CAL TB 117-2013 EN 1021 Part 1 & 2	REACH	 ANTIMICROBIAL RESISTANCE TO STAINS



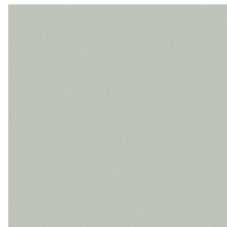
ARCILLA



BLANCO



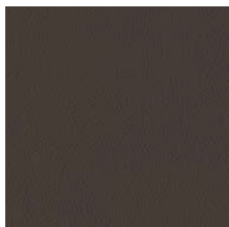
CANELA



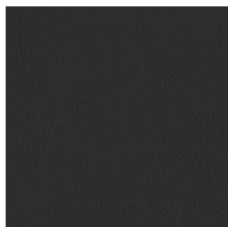
CENIZA



COGNAC




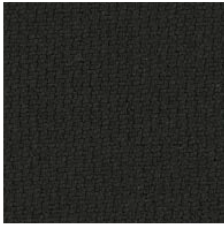
MARRON



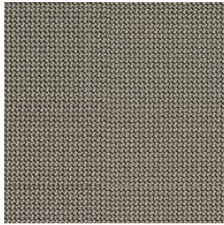
NEGRO

● RENEWED LOOP

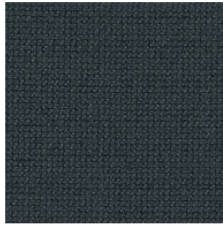
Composition	Width	Abrasion resistance	Pilling	Flame retardancy	Ecology	Cleaning
100% recycled polyester, contains 3-10% textile residues	140 cm	100 000 MD	4-5	EN 1021 Class 1 & 2 CAL TB 117 - 2013	OEKO-TEX® EU Ecolabel	 100% RECYCLED



60999




61280



66257

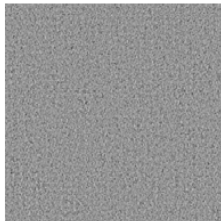
CATEGORY B

● LOWLANDS

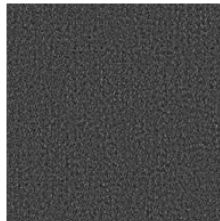
Composition	Width	Abrasion resistance	Pilling	Flame retardancy	Ecology	Cleaning
70% recycled wool, 30% polyamide	140 cm	190 000 MD	3	BS 5852 Crib 5 EN 1021 Class 1 & 2 CAL TB 117 - 2013	OEKO-TEX® REACH	 70% RECYCLED



511



513



516



521



526



529



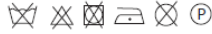
550

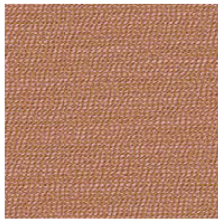


575

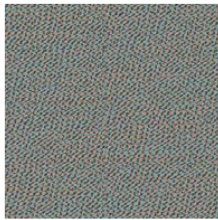
CATEGORY C

● ARCO

Composition	Width	Abrasion resistance	Pilling	Flame retardancy	Ecology	Cleaning
95% virgin wool 5% polyamide	140 cm	70 000 MD	4-5	DIN EN 1021-1/ -2 UNI 9175 1 IM	REACH AB 2998	 MARITIME SECTOR



BLOSSOM



COAST



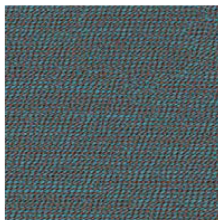
EBONY



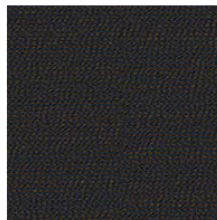
ICE



JASMIN




POND



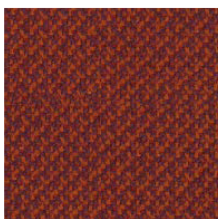
SECRET

● CLEO

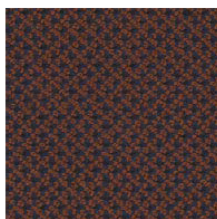
Composition	Width	Abrasion resistance	Pilling	Flame retardancy	Ecology	Cleaning
95% virgin wool, 5% polyamide	140 cm	70 000 MD	4-5	BS 5852 Part 1 CAL TB 117 - 2013 DIN EN 1021-1/-2 ÖNORM B1/Q1 UNI 9175 1 IM	REACH AB 2998	 MARITIME SECTOR



COAL



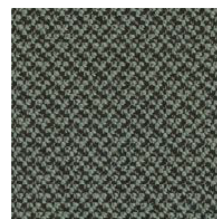
LAMPION



MAGMA



PEARL




SALBEI

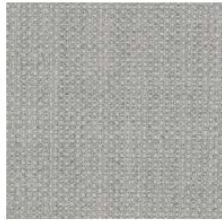


WALNUT

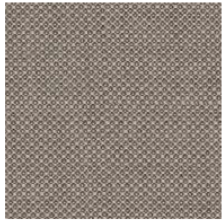
CATEGORY D

● FIORD 2

Composition	Width	Abrasion resistance	Pilling	Flame retardancy	Ecology	Cleaning
92% virgin wool, 8% nylon	140 cm	60 000 MD	4-5	BS 5852 Part 1 EN 1021 Class 1 & 2 CAL TB 117 - 2013 ÖNORM B1/Q1 UNI 9175 1 IM	EU Ecolabel	 MARITIME SECTOR



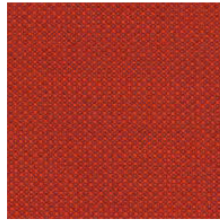
0201



0262



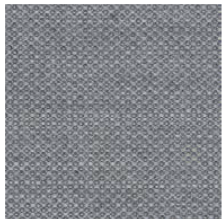
0422



0571



0581



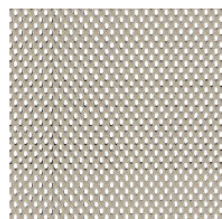
0751



0961

POLO

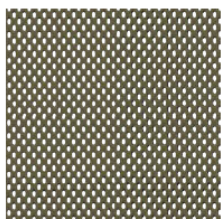
Composition	Width	Abrasion resistance	Pilling	Flame retardancy	Ecology	Cleaning
100% polyester	150 cm	100 000 MD	5		OEKO-TEX®	



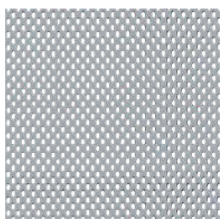
BEIGE



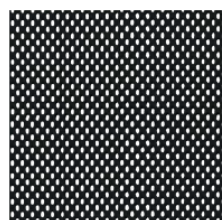
BLEU



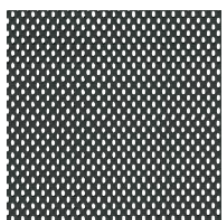
CASTORO



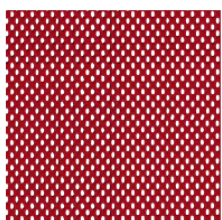
GRIGIO



NERO



PIOMBO




ROSSO

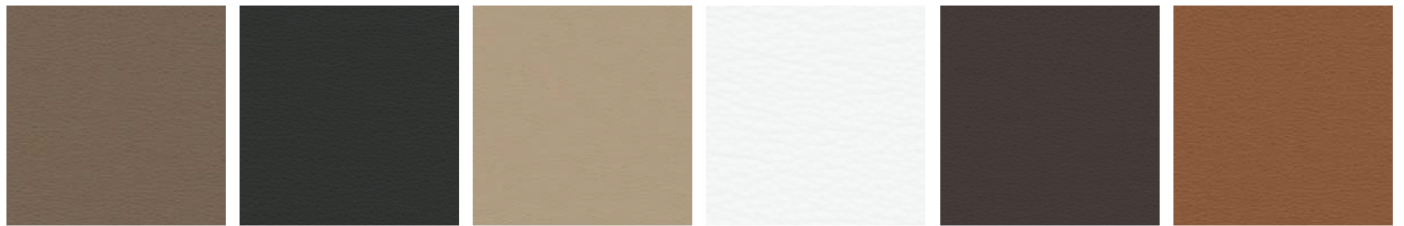
Polo is an airy textile mesh which is used for back part of Chips lounge chair. It can also be used to upholster the backs and seats of, for example, a classic range of bentwood furniture.

If used on a seat the Polo mesh is always combined with special underlay material for increased durability.

CATEGORY 1

● PRESCOTT

Composition	Width	Leather thickness	Flame retardancy	Ecology	Cleaning
semi-aniline leather	4.8-5.0 m ²	1.2-1.4 mm	CAL TB 117 - 2013 BS 5852:1979 BS EN 1021-1-2:2006	REACH	 MARITIME SECTOR



ANTILOP

BLACK INK

CLAY


DASH

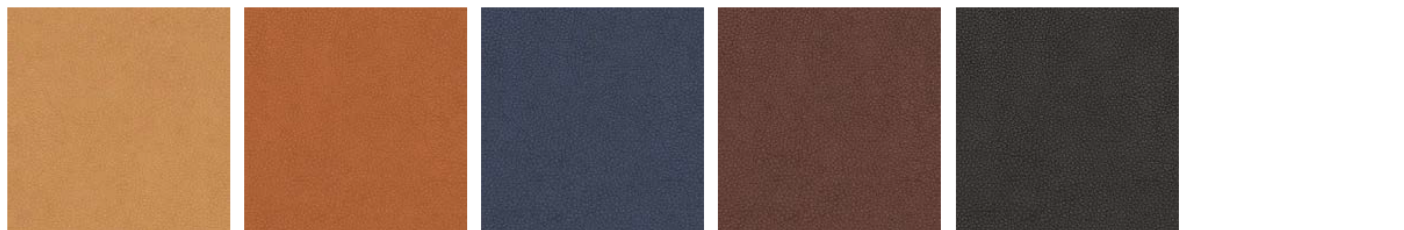
ROOT

SWAMP

CATEGORY 2

● ELMOTIQUE

Composition	Width	Leather thickness	Flame retardancy	Ecology	Cleaning
aniline leather	±4.8 m ²	1.00-1.20 mm	CAL TB 117 - 2013 ISO 8191 Class 1 & 2 EN 1021 Class 1 & 2	REACH	



43024

43807

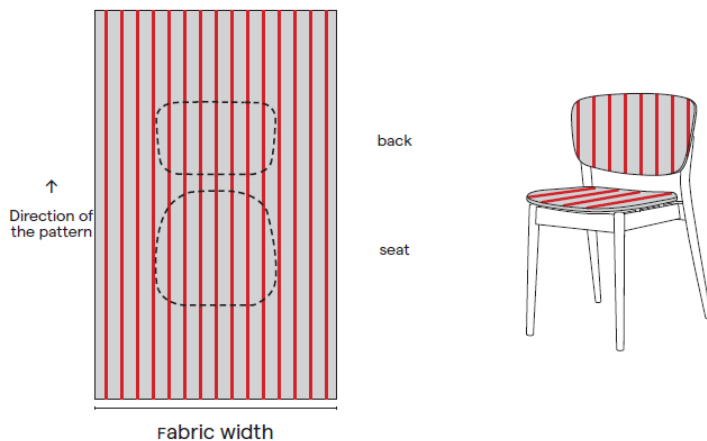
77875

93957

99001

CUSTOMER'S OWN MATERIAL

If our range of upholstery materials does not meet your needs, you can provide your own material. The required amount of material as stated in the price list is calculated per piece on orders of more than 10 pieces. For orders of 1 to 10 pieces, the required amount should be consulted with a sales representative. For fabrics and vinyls, the calculation in the price list is based on material width of 140 cm. If you have a material with a different width, we recommend that you contact a sales representative to confirm the amount of material required. When upholstering furniture we work with the customary direction of a pattern, which can influence the final look of the upholstery. When supplying fabric with a distinctive pattern, we recommend that customers consult with us in advance to agree on the way the pattern is to be used.



Fabrics, artificial leathers and natural leathers should be sent in rolls only. Artificial leather and natural leather in particular can be subject to deformation when folded and such damage can be irreversible!



In case of COM, mark distinctly what shall be the face side. If the customer's fabric is chequered, striped or is of another special design which can be upholstered both horizontally and vertically, indicate how you wish to place the design on the seat and backrest. In this case, the material consumption can be higher than expected. If the face side or the direction of upholstering is not marked, we reserve the right to determine it by ourselves.



Regarding upholstery with customer's own material (COM), we reserve the right to refuse any material which is not suitable for upholstery of our seating furniture or is not delivered in the requested state.

DECORATIVE NAILS

Upholstery of selected models can be complemented by decorative nails, especially if upholstered with artificial or natural leather. Antique bronze is our standard nail. Surcharge for decorative nails is listed for applicable models in the price list.



Please note that small fragments of plastic material that was used to position the nails may appear around the decorative nails.

GLIDES

Felt glides



Teflon glide

