

MALMÖ CHAIR

M TON
D MICHAEL RIABIC

The seat section of uniform plywood is broken by the unconventional connections between the legs. The legs pass through the seat emphasizing the structural construction which is also a design detail. The effect is outstanding in the two-color version.



W 17.3" x D 18.5" x H 32.3"

SEAT HEIGHT 18.1"

FRAME

BEECH
OAK

VARIOUS COLORS

SEAT

BEECH VENEER
OAK VENEER

VARIOUS COLORS

UPHOLSTERY

FABRIC
LEATHER

VARIOUS COLORS



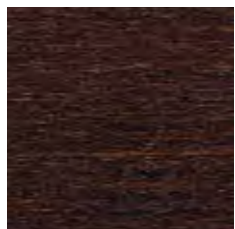
NATURAL FINISHES

natural
beech - lacquer / oil

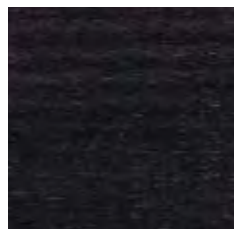


STAINS

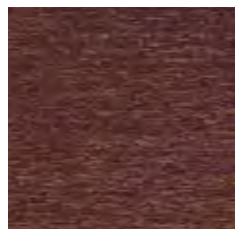
B4 coffee
beech/oak/ash - lacquer



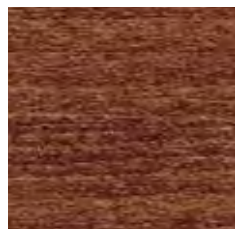
B105 dark wenge
beech/oak/ash - lacquer



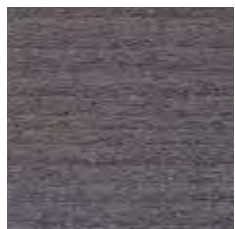
B112 dark chocolate
beech/oak/ash - lacquer



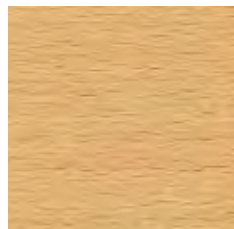
B114 nougat
beech/oak/ash - lacquer



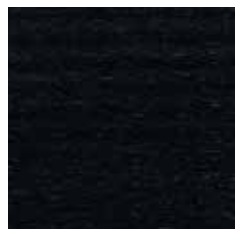
B115 granite
beech/oak/ash - lacquer



B116 honey
beech/ash - lacquer



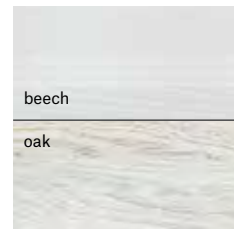
B123 black grain
beech/oak/ash - lacquer



B276 white powder
beech/oak/ash - lacquer



Colour difference between beech
and oak in B276 - white powder



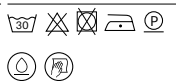
ANTIQUE

B130/A
antique classic
beech



Category A

■ Brunei

Composition	Width	Abrasion resistance	Pilling	Flame retardancy	Ecology	Cleaning
100% polyester	140 cm	30 000 MD	4	BS 5852 Part 1	Oeko-Tex	



18



29



31




38



45

■ Fargo

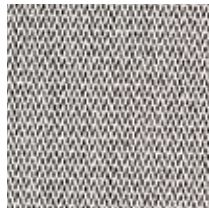
Composition	Width	Abrasion resistance	Pilling	Flame retardancy	Ecology	Cleaning
100% polyester	142 cm	62 000 MD	4-5	EN 1021 Part 1	—	



701



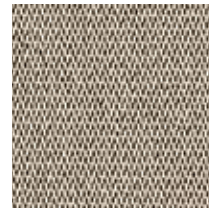
710



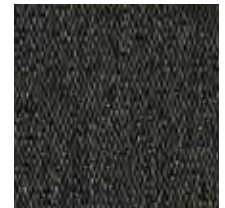
801



923




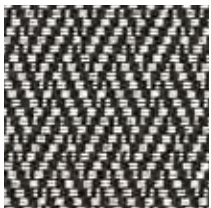
927



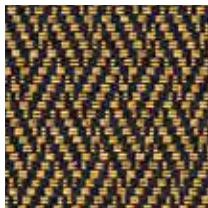
990

■ Harby

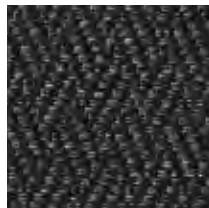
Composition	Width	Abrasion resistance	Pilling	Flame retardancy	Ecology	Cleaning
100% polyester	142 cm	62 000 MD	4-5	EN 1021 Part 1	—	



801



810



990

Category A

■ Jim

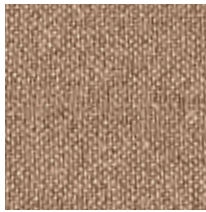
Composition	Width	Abrasion resistance	Pilling	Flame retardancy	Ecology	Cleaning
56% cotton, 12% linen, 12% polyester, 12% viscose	142 cm	54 000 MD	4	EN 1021 Part 1	Oeko-Tex	



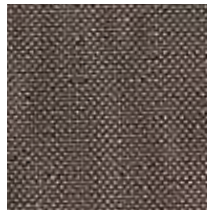
598



604



718



767



803



826



828



898

■ Lerma

Composition	Width	Abrasion resistance	Pilling	Flame retardancy	Ecology	Cleaning
100% polyester	142 cm	112 000 MD	4-5	EN 1021 Part 1	Oeko-Tex	



701



801



818



847



882



909

■ Luciana

Composition	Width	Abrasion resistance	Pilling	Flame retardancy	Ecology	Cleaning
57% cotton, 43% polyester	142 cm	40 000 MD	4	EN 1021 Part 1	—	



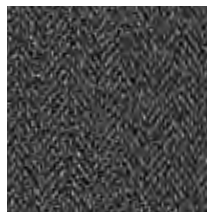
750



801



838



881

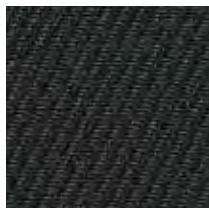
Category A

■ Manresa

Composition	Width	Abrasion resistance	Pilling	Flame retardancy	Ecology	Cleaning
52% cotton, 26% polyester, 11% viscose, 11% linen	142 cm	55 000 MD	4	EN 1021 Part 1	—	



108



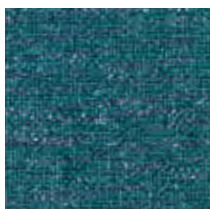
905



907

■ Robo

Composition	Width	Abrasion resistance	Pilling	Flame retardancy	Ecology	Cleaning
33% cotton, 37% polyester, 21% viscose, 9% linen	142 cm	48 000 MD	4	EN 1021 Part 1	—	



562



566



703



708



820



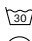

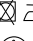



857



885

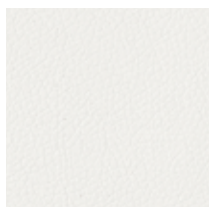
Category A

■ Grain 

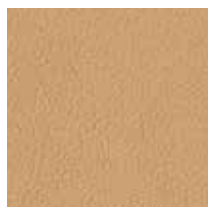
Composition	Width	Abrasion resistance	Pilling	Flame retardancy	Ecology	Cleaning
surface 100% polyurethane; underlay 67% polyester, 33% cotton	140 cm	200 000 MD	—	BS 5852 Part 1 California TB117-2013 EN 1021 Part 1 & 2	REACH	       



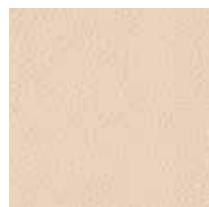
arcilla 75



blanco 00



canela 11



crema 02



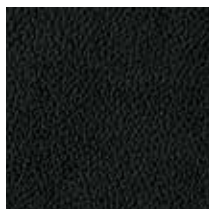
gris 01



marino 69



marron 23



negro 90



rojo 29



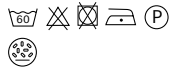
teja 15



tierra 07

Category B

■ Jet Bioactive  

Composition	Width	Abrasion resistance	Pilling	Flame retardancy	Ecology	Cleaning
100% Trevira® CS Bioactive	140 cm	65 000 MD	5	BS 5852 Crib 5 California TB117-2013 DIN 4102 Class B1 EN 1021 Part 1 & 2 NF 92501-7 Class M1 ÖNORM A 3800-1 Class Q1 ÖNORM B 3825	Oeko-Tex	



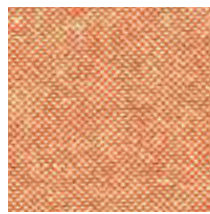
8033



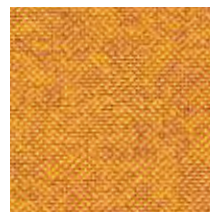
9109



9110



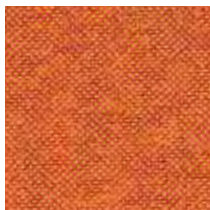
9301



9304



9401



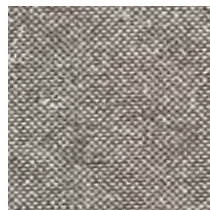
9403



9610

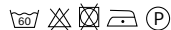


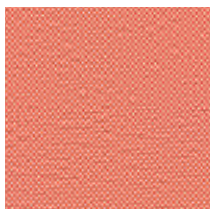
9702



9804

■ Torino 

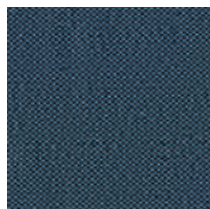
Composition	Width	Abrasion resistance	Pilling	Flame retardancy	Ecology	Cleaning
100% Trevira® CS	140 cm	70 000 MD	5	BS 5852 Crib 5 California TB117-2013 DIN 4102 Class B1 EN 1021 Part 1 & 2 NF 92501-7 Class M1 ÖNORM A 3800-1 Class B1,Q1,TR1 ÖNORM B 3825	Oeko-Tex	



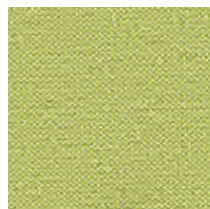
9401



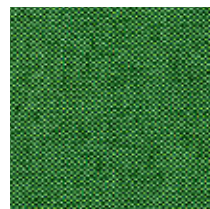
9601



9616



9701





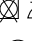
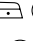
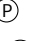





9707



9818

Category B

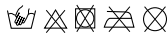

■ Palma NF  

Composition	Width	Abrasion resistance	Pilling	Flame retardancy	Ecology	Cleaning
surface 100% vinyl	137 cm	50 000 MD	—	BS 5852 Crib 5 California TB117-2013 DIN 4102 Part 1 Class B1 + B2 DIN 53438 Part 2 & 3 DIN 66084 P-a EN 1021 Part 1 & 2 NF P 92503 Class M1 ÖNORM A 3800-1 Class Q1 ÖNORM B 3825	REACH	    
surface 100% cotton						    

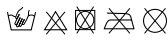



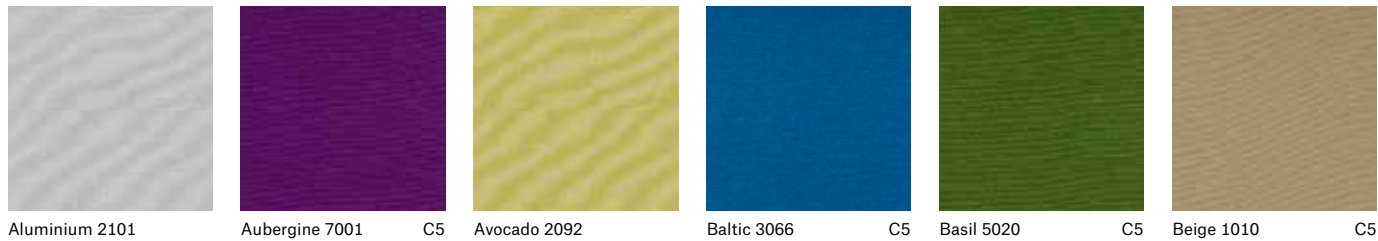
Category B

■ Silvertex®  

Composition	Width	Abrasion resistance	Pilling	Flame retardancy	Ecology	Cleaning
surface 100% vinyl	137 cm	300 000 MD	—	California TB117-2013 DIN 4102 Class B2 EN 1021 Part 1 & 2	REACH	
surface 100% polyester				NF P 92503 Class M2 ÖNORM A 3800-1 Class Q1 ÖNORM B 3825		

■ Silvertex® C5  

Composition	Width	Abrasion resistance	Pilling	Flame retardancy	Ecology	Cleaning
surface 100% vinyl	137 cm	100 000 MD	—	BS 5852 Crib 5 DIN 4102 Class B2 EN 1021 Part 1 & 2	REACH	
surface 100% cotton				NF P 92503 Class M2		



Category B

■ Silvertex®



Graphite 4003

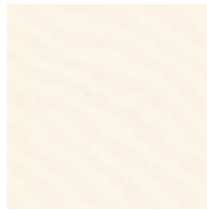


Grenadine 2095



Ice 4004

C5



Ice Cream 2090



Jet 3068



Lotus 2099



Luggage 0073



Macadamia 0001

C5



Magenta 7002

C5



Mandarin 6061

C5



Melon 6062



Meteor 4024

C5



Mocca 0005

C5



Orange 0013



Orchid 2097



Petrol 2094



Pistacho 5008

C5



Plata 4001

C5



Raspberry 2016



Red 2011

C5



Rosé 2098



Rubin 6004

C5



Safran 6065

C5



Sage 5009



Sandstone 0002

C5



Sapphire 3007

C5



Shiitake 4012



Sisal 1051

C5



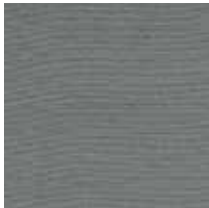
Skylight 2103



Squash 2093

Category B

■ Silvertex®



Sterling 4011



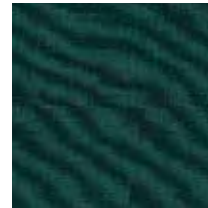
Storm 4002



Sunkist 2012



Taupe 0009



Teal 2100



Titanium 4010



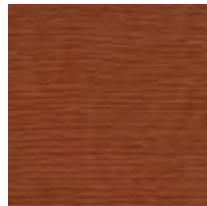
Tomato 2096



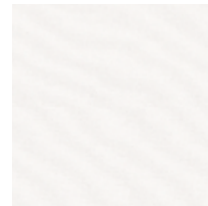
Turquoise 3001



Ultra Violet 2104



Umber 1014




White 2089



Wine 2064

We do not keep this material in stock. We order the required quantity for specific orders and therefore the lead time can be longer depending on the manufacturer's delivery terms.


■ Ginkgo  

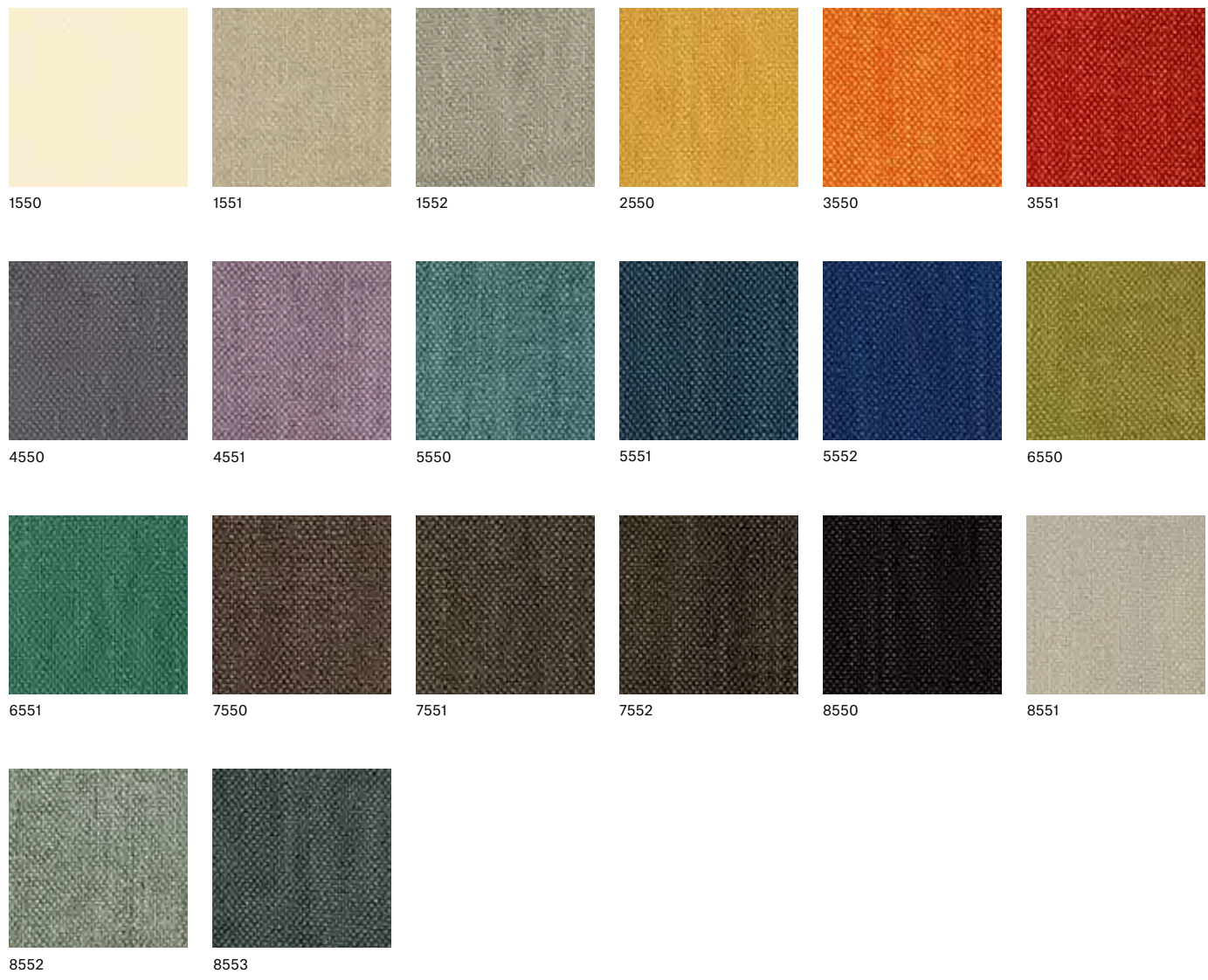
Composition	Width	Abrasion resistance	Pilling	Flame retardancy	Ecology	Cleaning
surface 100% vinyl	140 cm	150 000 MD	—	BS 5852 Crib 5 California TB117-2013 DIN 4102 Class B2 EN 1021 Part 1 & 2 NF 92503 Class M1 NF P 92504 Class M1 Önorm A 3800-1 Class Q1 Önorm B 3825	REACH	
surface 100% cotton						

The artificial leather Ginkgo can be ordered in all colour shades according to the manufacturer's swatches.

Category C


■ Ambra ⊕ ⊗

Composition	Width	Abrasion resistance	Pilling	Flame retardancy	Ecology	Cleaning
100% polyester	134 cm	60 000 MD	5	BS 5852 Crib 5 California TB117-2013 EN 1021 Part 1 & 2	—	



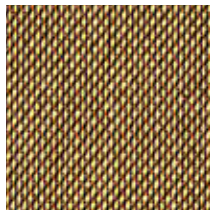
Category C

■ Garda 

Composition	Width	Abrasion resistance	Pilling	Flame retardancy	Ecology	Cleaning
100% Trevira® CS	140 cm	80 000 MD	5	BS 5852 Crib 5 California TB117-2013 DIN 4102 Class B1 EN 1021 Class 1 & 2 NF 92503 Class M1 ÖNORM A 3800-1 Class B1,Q1,TR1 ÖNORM B 3825	Oeko-Tex	



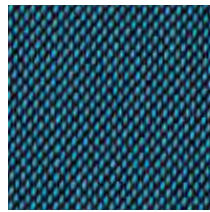
9301



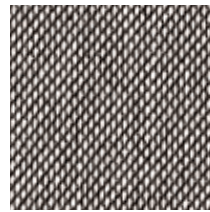
9307



9406




9616



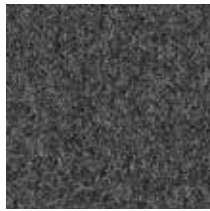
9808

■ Lowlands Plain

Composition	Width	Abrasion resistance	Pilling	Flame retardancy	Ecology	Cleaning
70% virgin wool, 30% polyamide	140 cm	190 000 MD	3	BS 5852 Crib 5 California TB117-2013 EN 1021 Part 1 & 2	REACH	



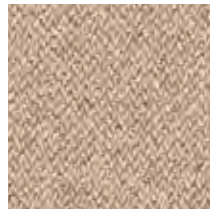
513



516



521



524



529



531



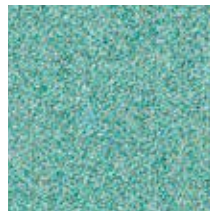
541



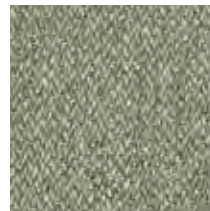
542



562



571



572




581



585

Category D

■ Dante 

Composition	Width	Abrasion resistance	Pilling	Flame retardancy	Ecology	Cleaning
95% virgin wool, 5% polyamide	140 cm	52 000 MD	4-5	BS 5852 Crib 5 California TB117-2013 DIN 4102 Class B2 EN 1021 Part 1 & 2	RAL-UZ 117 Appendix 2+3	



black



chrom




lanoso



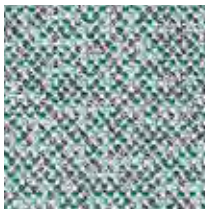
snow

■ Mica 

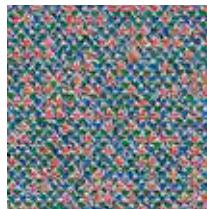
Composition	Width	Abrasion resistance	Pilling	Flame retardancy	Ecology	Cleaning
95% virgin wool, 5% polyamide	140 cm	50 000 MD	4-5	BS 5852 Crib 5 California TB117-2013 DIN 4102 Class B2 EN 1021 Part 1 & 2	RAL-UZ 117 Appendix 2+3	



arion




aqua



papillon

Category D

■ Milkyway 

Composition	Width	Abrasion resistance	Pilling	Flame retardancy	Ecology	Cleaning
94% virgin wool, 6% polyamide	150 cm	70 000 MD	5	BS 5852 Crib 5 California TB117-2013 DIN 4102 Class B2 EN 1021 Part 1 & 2	RAL-UZ 117 Appendix 2+3	



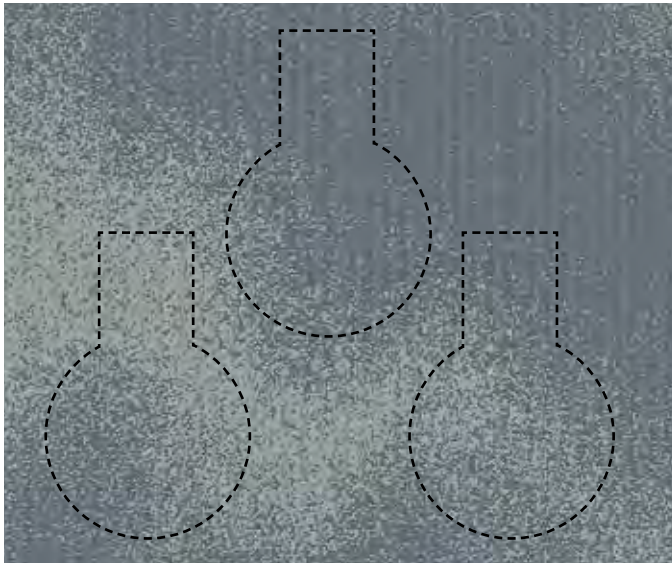
powder



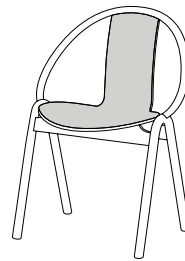
jade




shadow

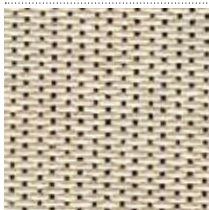


■ A high-quality fabric made from wool featuring the cosmic pattern of the Milky Way. Given the changing nature of the pattern, which repeats every three meters, each upholstered piece of furniture is an original – yet clearly part of the celestial colour scheme.

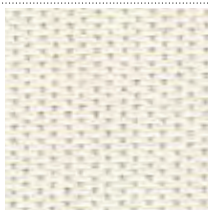


■ Sand

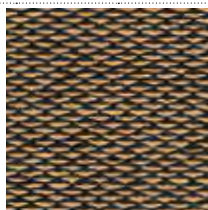
Composition	Width	Abrasion resistance	Pilling	Flame retardancy	Ecology	Cleaning
100% Trevira® CS	140 cm	50 000 MD	4	BS 5852 Crib 5 California TB117-2013 DIN 4102 Class B1 EN 1021 Part 1 & 2 NF P 92504 Class M1 NF P 92507 Class M1 ÖNORM B 3825	Oeko-Tex	



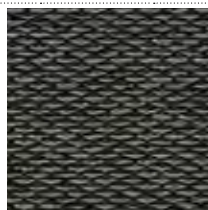
01/90



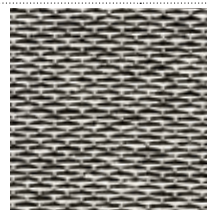
02/00



06/78




07/88

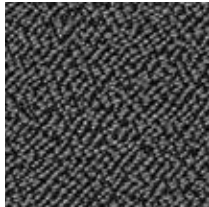


10/80

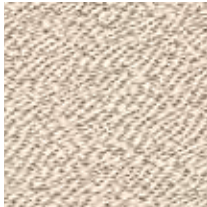
Category D

■ Sera 

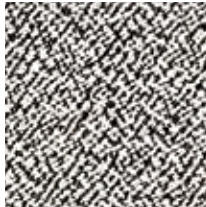
Composition	Width	Abrasion resistance	Pilling	Flame retardancy	Ecology	Cleaning
94% virgin wool, 6% polyamide	140 cm	122 000 MD	4-5	BS 5852 Crib 5 California TB117-2013 DIN 4102 Class B2 EN 1021 Part 1 & 2	RAL-UZ 117 Appendix 2+3	



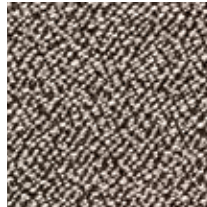
anthrazit



calla




pepper



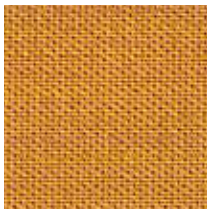
walnut

■ Topia 

Composition	Width	Abrasion resistance	Pilling	Flame retardancy	Ecology	Cleaning
95% virgin wool, 5% polyamide	150 cm	50 000 MD	4-5	BS 5852 Crib 5 California TB117-2013 DIN 4102 Class B2 EN 1021 Part 1 & 2	RAL-UZ 117 Appendix 2+3	



bronze



curry



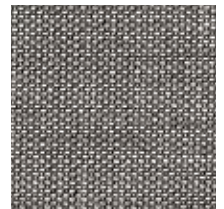
heart



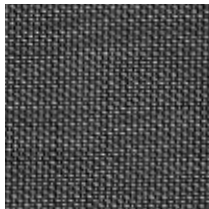
messing



orion



platin

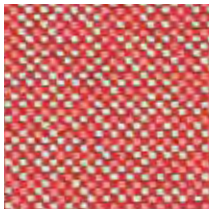


schiefer

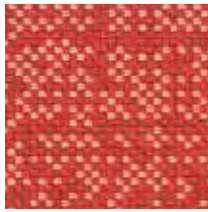
Category D

Walker

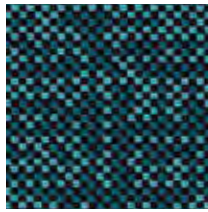
Composition	Width	Abrasion resistance	Pilling	Flame retardancy	Ecology	Cleaning
100% Trevira® CS	150 cm	45 000 MD	5	BS 5852 Crib 5 California TB117-2013 DIN 4102 Class B1 EN 1021 Class 1 & 2 ISO 8191 Part 1 & 2 NF P 92503 M1 NF P 92507 M1	Oeko-Tex	



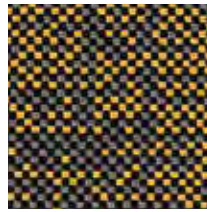
01



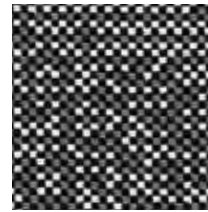
10



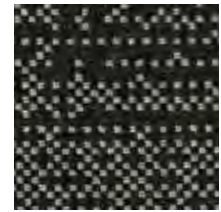
40



68



80



88

Category E

Alcantara® Avant

Composition	Width	Abrasion resistance	Pilling	Flame retardancy	Ecology	Cleaning
68% polyester, 32% polyurethane	142 cm	150 000 MD	—	BS 5852 Crib 5 EN 1021 Part 1 & 2	Oeko-Tex	

Included in this price group is Alcantara fabric, which can be ordered in all colours listed in the manufacturer's sample book. We do not keep this material in stock. We order the required quantity

for specific orders and therefore the lead time can be longer depending on the manufacturer's delivery terms.

Category 1

■ MDR

Type of leather	Size	Thickness	Flame retardancy	Ecology	Cleaning
pigmented leather	± 4 m ²	0,80-1,00 mm	BS 5852 Part 0 & 1 California TB117-2013 EN 1021 Part 1 & 2	REACH	



0000



31174



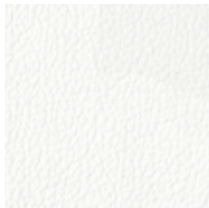
70386



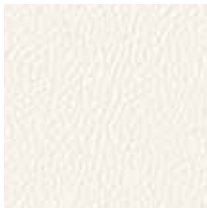
71295

■ Prince

Type of leather	Size	Thickness	Flame retardancy	Ecology	Cleaning
pigmented leather	± 3,9 m ²	0,90-1 mm	BS 5852 Part 0 & 1 EN 1021 Part 1 & 2	REACH	



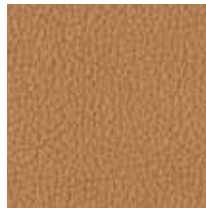
171



179



180



188

Category 2

■ Elmotique

Type of leather	Size	Thickness	Flame retardancy	Ecology	Cleaning
aniline leather	± 5 m ²	1,00-1,20 mm	California TB117-2013 EN 1021 Part 1 & 2 ISO 8191 Part 1 & 2	REACH	



43024



43807



93957



99001

■ Elmosoft

Type of leather	Size	Thickness	Flame retardancy	Ecology	Cleaning
semi-aniline leather	± 5 m ²	1,10-1,30 mm	BS 5852 Crib 5 California TB117-2013 DIN 4102 Class B1 EN 1021 Part 1 & 2 ISO 8191 Part 1 & 2 NF P 92503 Class M2 ÖNORM B 3825	REACH	

Elmosoft leather can be ordered in all colour shades according to the manufacturer's swatches.

GLIDES

Felt glides



Teflon glide



(illustrative image)