

LOUNGE CHAIR CHIPS

M TON
D LUCIE KOLDOVA

Gentle curves, contrasting materials, manually-bent wood. The Chips lounge chair is striking for its commanding airy backrest shaped like a potato chip – a chip that transforms into part of the chair base. The airy backrest embraces a cushy seat made with comfortable upholstery and pocket springs. Seating comfort is enhanced with a removable back pillow.



W 37.2" x D 35.2" x H 40.4"

SEAT HEIGHT 13.9"

FRAME

BEECH

ASH

VARIOUS FINISHES

SEAT

UPHOLSTERY

UPHOLSTERY

LEATHER
FABRIC

VARIOUS COLORS







WOOD FINISHES

NATURAL WOOD FINISHES



NATURAL BEECH
lacquer/oil

COLORED OIL



W115 OIL SMOKY WHITE
beech/oak



W660 OIL BARK BROWN
beech/oak



W685 OIL EARTHY BROWN
beech/oak



W520 OIL MISTY GREEN
beech/oak



W170 OIL STONE GREY
beech/oak

STAINS



B4 COFFEE
beech/oak



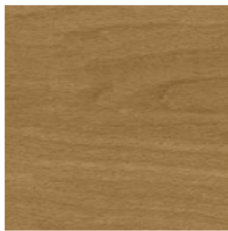
B105 DARK WENGE
beech/oak



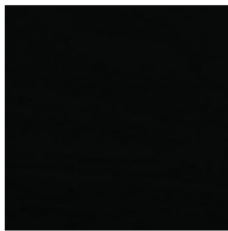
B112 DARK CHOCOLATE
beech/oak



B114 NOUGAT
beech/oak



B116 HONEY
beech



B123 BLACK GRAIN
beech/oak



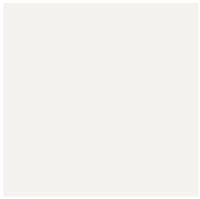
B580 FOREST GREEN
beech/oak



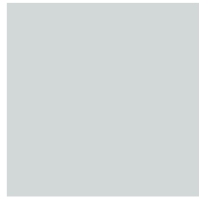
S110 LIGHT WHITE
beech/oak

WOOD FINISHES

PIGMENTED FINISHES



C120 WHITE
beech/oak



C139 CLOUD GREY
beech/oak



C150 MOON GREY
beech/oak



C180 GREY SHADOW
beech/oak



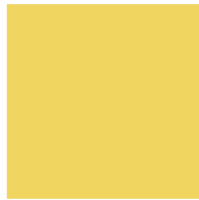
C250 STEAM BLUE
beech/oak



C270 GRAPHITE BLUE
beech/oak



C350 FACTORY RED
beech/oak



C450 RESIN YELLOW
beech/oak



C540 PEBBLE GREEN
beech/oak








C570 DEEP GREEN
beech/oak

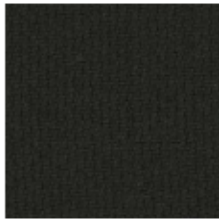


C610 MOCCA BEIGE
beech/oak

FABRICS AND ARTIFICIAL LEATHERS

● RENEWED LOOP

Composition	Width	Abrasion resistance	Pilling	Flame retardancy	Ecology	Cleaning
100% recycled polyester, contains 3-10% textile residues	140 cm	100 000 MD	4-5	EN 1021 Class 1 & 2 CAL TB 117 - 2013	OEKO-TEX® EU Ecolabel	    
						100% RECYCLED



60999








61280



66257

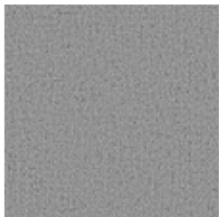
CATEGORY B

● LOWLANDS

Composition	Width	Abrasion resistance	Pilling	Flame retardancy	Ecology	Cleaning
70% recycled wool, 30% polyamide	140 cm	190 000 MD	3	BS 5852 Crib 5 EN 1021 Class 1 & 2 CAL TB 117 - 2013	OEKO-TEX® REACH	    
						70% RECYCLED



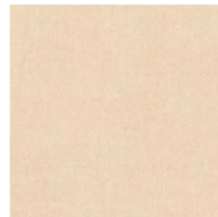
511



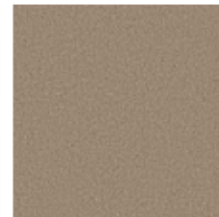
513



516



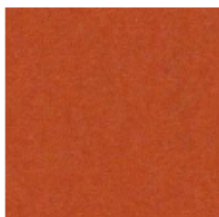
521



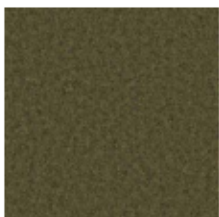
526



529



550




575

FABRICS AND ARTIFICIAL LEATHERS

CATEGORY C

● ARCO

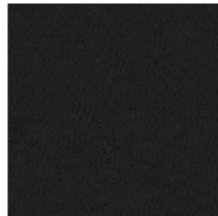
Composition	Width	Abrasion resistance	Pilling	Flame retardancy	Ecology	Cleaning
95% virgin wool 5% polyamide	140 cm	70 000 MD	4-5	DIN EN 1021-1/ -2 UNI 9175 1 IM	REACH AB 2998	 MARITIME SECTOR



BLOSSOM



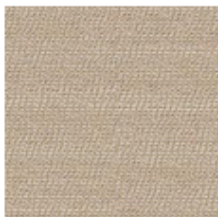
COAST



EBONY



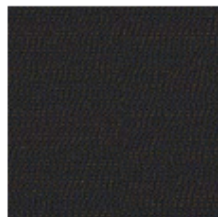
ICE



JASMIN




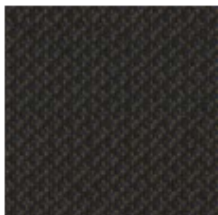
POND



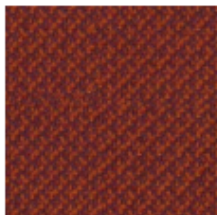
SECRET

● CLEO

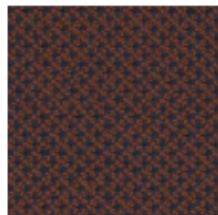
Composition	Width	Abrasion resistance	Pilling	Flame retardancy	Ecology	Cleaning
95% virgin wool, 5% polyamide	140 cm	70 000 MD	4-5	BS 5852 Part 1 CAL TB 117 - 2013 DIN EN 1021-1/-2 ÖNORM B1/Q1 UNI 9175 1 IM	REACH AB 2998	 MARITIME SECTOR



COAL



LAMPION



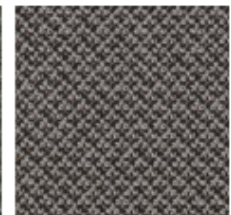
MAGMA



PEARL



SALBEI




WALNUT

WFABRICS AND ARTIFICIAL LEATHERS

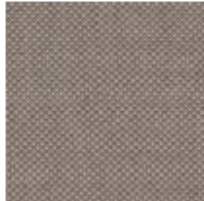
CATEGORY D

● FIORD 2

Composition	Width	Abrasion resistance	Pilling	Flame retardancy	Ecology	Cleaning
92% virgin wool, 8% nylon	140 cm	60 000 MD	4-5	BS 5852 Part 1 EN 1021 Class 1 & 2 CAL TB 117 - 2013 ÖNORM B1/Q1 UNI 9175 1 IM	EU Ecolabel	
						MARITIME SECTOR



0291



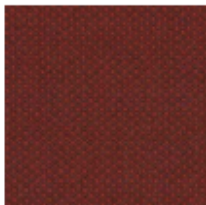
0262



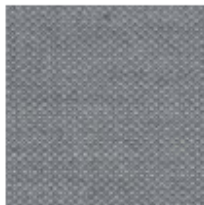
0422



0571



0581



0751



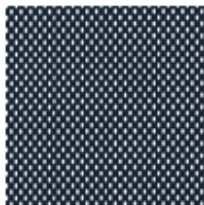
0961

POLO

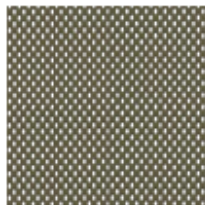
Composition	Width	Abrasion resistance	Pilling	Flame retardancy	Ecology	Cleaning
100% polyester	150 cm	100 000 MD	5		OEKO-TEX®	



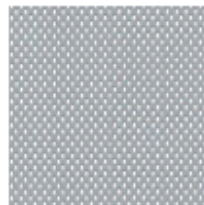
BEIGE



BLEU



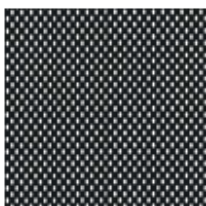
CASTORO



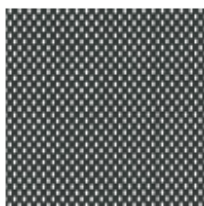
GRIGIO

Polo is an airy textile mesh which is used for back part of Chips lounge chair. It can also be used to upholster the backs and seats of, for example, a classic range of bentwood furniture.

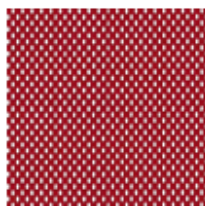
If used on a seat the Polo mesh is always combined with special underlay material for increased durability.



NERO



PIOMBO




ROSSO

LEATHER

CATEGORY 1

● PRESCOTT

Composition	Width	Leather thickness	Flame retardancy	Ecology	Cleaning
semi-aniline leather	4.8-5.0 m ²	1.2-1.4 mm	CAL TB 117 - 2013 BS 5852:1979 BS EN 1021-1-2:2006	REACH	 MARITIME SECTOR



ANTILOP



BLACK INK



CLAY



DASH




ROOT

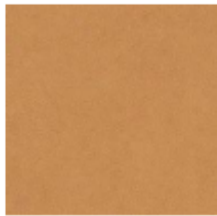


SWAMP

CATEGORY 2

● ELMOTIQUE

Composition	Width	Leather thickness	Flame retardancy	Ecology	Cleaning
aniline leather	±4.8 m ²	1.00-1.20 mm	CAL TB 117 - 2013 ISO 8191 Class 1 & 2 EN 1021 Class 1 & 2	REACH	



43024



43807



77875



93957



99001