

the UNISON TABLEWARE

designed by Julia Jessen | 2016



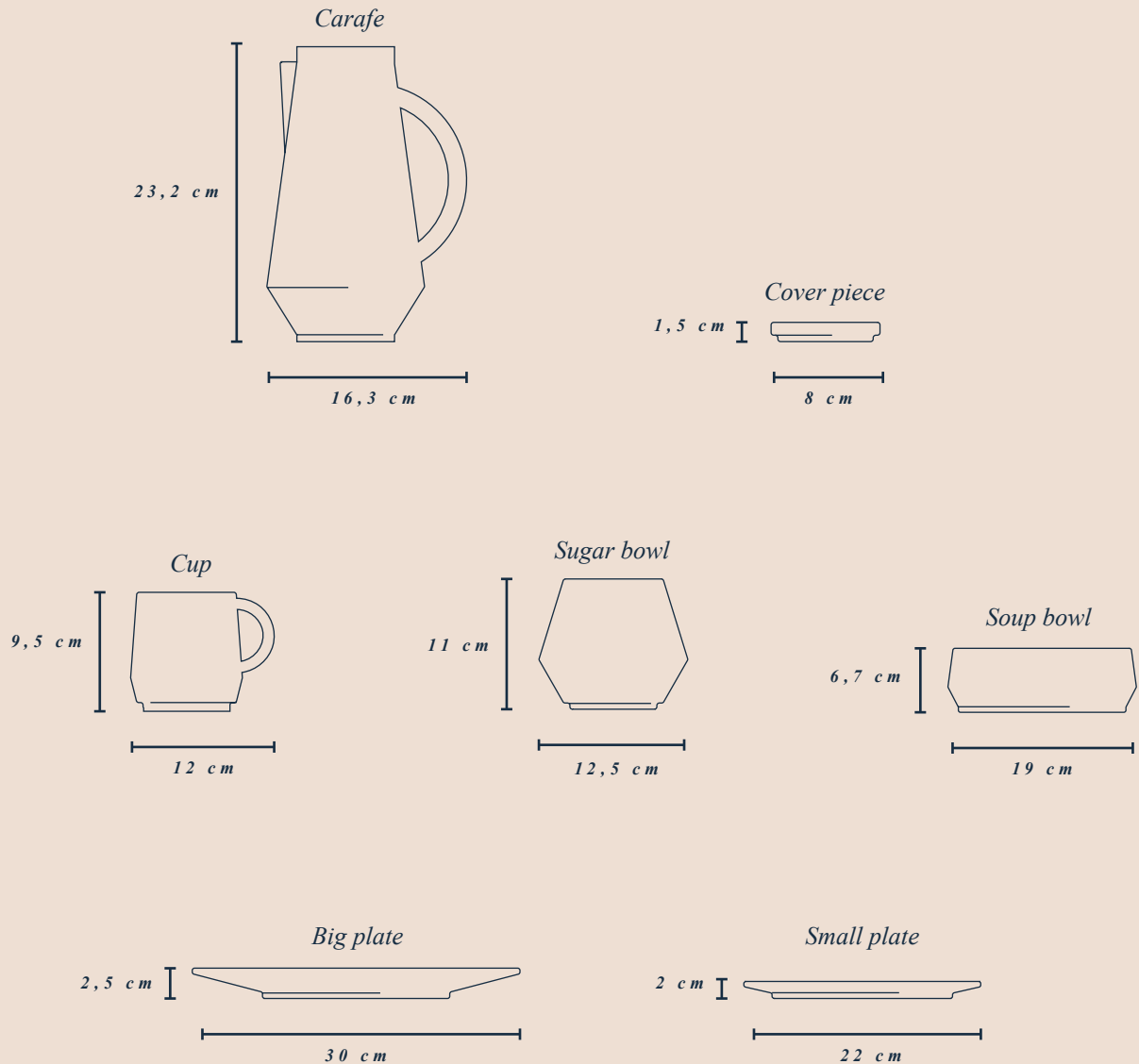
Unison tableware collection in all colours

With soft and tactile qualities and a rich and vibrant palette ranging from deep brown to powder, the Unison pieces make an ideal addition to your simple everyday tableware, evolving an artful touch to your surroundings.

Consisting of seven pieces in four colours and made by hand in our in-house ceramic workshop, the Unison collection is freely stackable to form a striking and artful object. Glazed on the inside and natural on the outside, the ceramics create an exciting contrast and give the pigments a bright yet natural expression.

**SCHNEID
STUDIO**

the UNISON TABLEWARE



PRODUCT TYPE

Ceramics Set (7 pieces)

DIMENSIONS | WEIGHT

Carafe	16,3 cm x 23,2 cm	1,1 kg
Cover piece	8 cm x 1,5 cm	0,2 kg
Cup	12 cm x 9,5 cm	0,4 kg
Sugar bowl	12,5 cm x 11 cm	0,4 kg
Soup bowl	19 cm x 6,7 cm	0,6 kg
Big plate	30 cm x 2,5 cm	0,8 kg
Small plate	22 cm x 2 cm	0,6 kg

the UNISON TABLEWARE

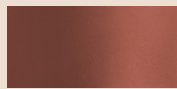
PRODUCTION PROCESS

The Unison ceramics are produced in our in-house ceramic workshop.

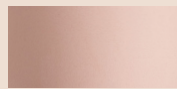
COLOR



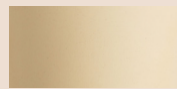
Baby Blue



Cinnamon



Coral



Yellow

MATERIAL

Ceramic

FINISH

The inside of the pieces is glazed. | The outer surface is untreated.

CLEANING INSTRUCTIONS

The ceramics are dishwasher proof.