

H55 LOUNGE CHAIR

M RICHARD LAMPERT

D HERBERT HIRCHE

In an old book, Richard Lampert discovered a photo of a small and compact chair, designed in 1955 by German architect and designer Herbert Hirche. Back then, only a limited number of pieces were produced. Consisting of a tubular steel frame and an upholstered plastic seat shell, the classic ›H55‹ design is now experiencing a renaissance.



W 28.3" x D 30.7" x H 31.1"
seat height 14.2"

FRAME

TUBULAR STEEL

BLACK
CHROME

SEAT / BACKREST

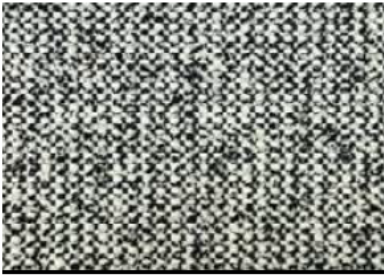
PLASTIC SHELL

FABRIC

SEE UPHOLSTERY OPTIONS BELOW

Upholstery options (white cushion also available without upholstery)

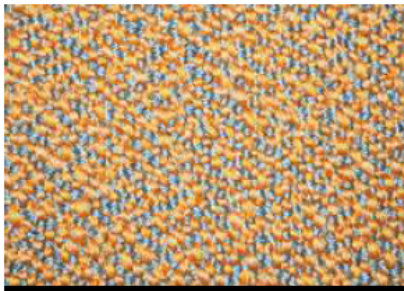
Category 1



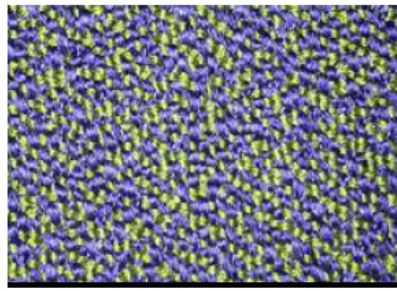
90% CO, 10% CV

SALT& PEPPER

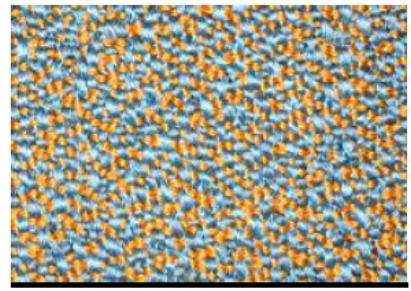
Category 2



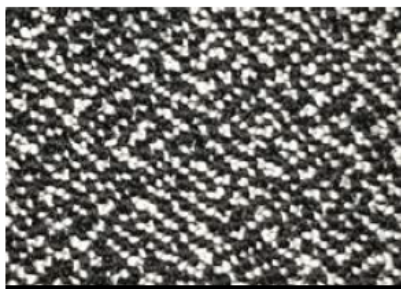
SERA arancio



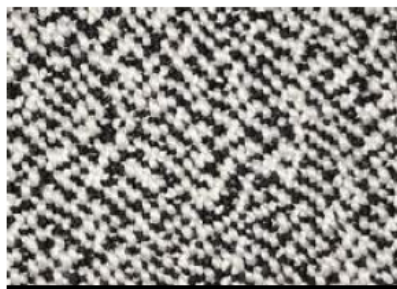
SERA mare



SERA mirage



SERA marmo



SERA pepper

94% WO, 6% PA

Category 3

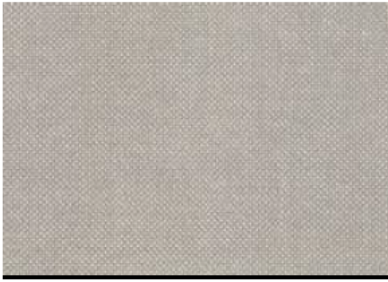


VELOURS green



VELOURS earth

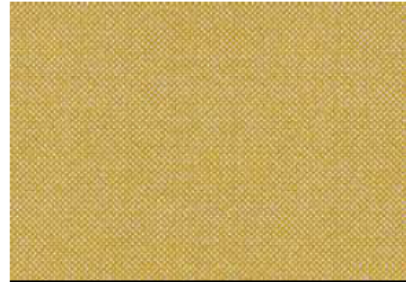
60% WO, 20% PES, 20% PA



HALLINGDAL 65 0103



HALLINGDAL 65 0270



HALLINGDAL 65 0407

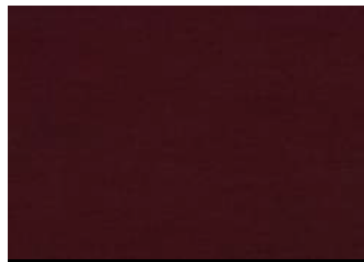
70% WO, 30% CV

more options available upon request

Category 4



GENTLE 2 0133



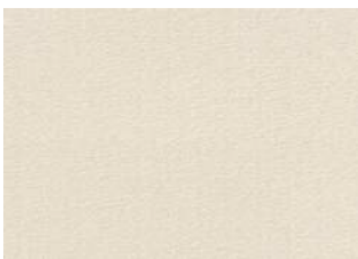
GENTLE 2 0683



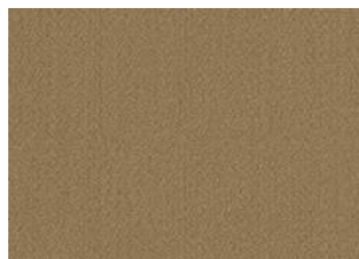
GENTLE 2 0873

60% WO, 20% PES, 20% PA

more options available upon request



VIDAR 4 0106



VIDAR 4 0333



VIDAR 4 0872

94% WO, 6% PA

more options available upon request