

H55 LOUNGE CHAIR

M RICHARD LAMPERT

D HERBERT HIRCHE

In an old book, Richard Lampert discovered a photo of a small and compact chair, designed in 1955 by German architect and designer Herbert Hirche. Back then, only a limited number of pieces were produced. Consisting of a tubular steel frame and an upholstered plastic seat shell, the classic ›H55‹ design is now experiencing a renaissance.



W 28.3" x D 30.7" x H 31.1"
seat height 14.2"

FRAME

TUBULAR STEEL

BLACK
CHROME
CUSTOM COLOR

SEAT / BACKREST

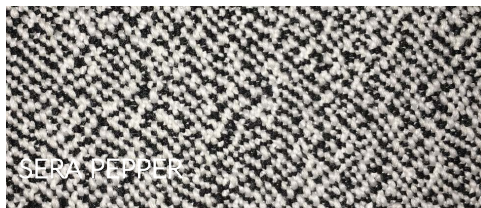
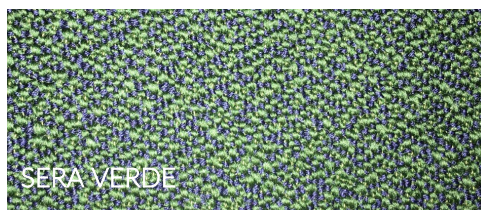
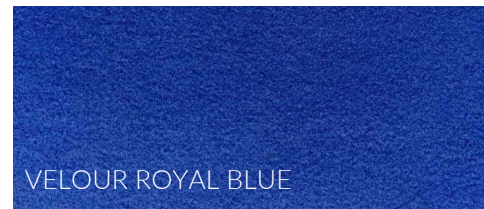
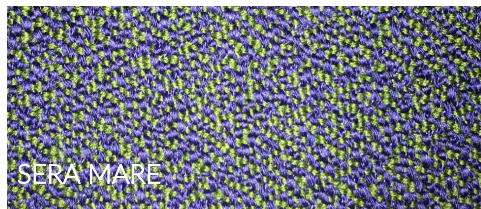
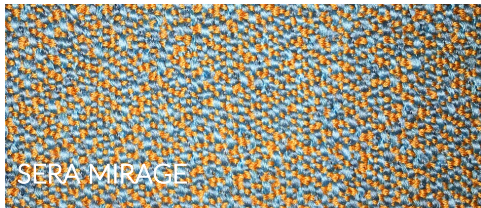
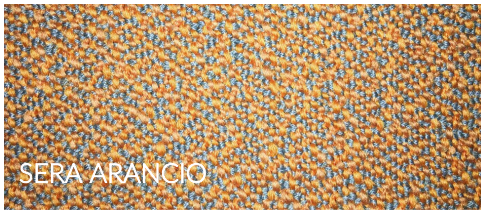
PLASTIC SHELL

FABRIC

SERA
VELOUR
HALLINGDAL

COM / COL

FABRIC



SERRA PEPPER



SERRA MARMO

FABRIC

