

Tom Stackable Stool

M RICHARD LAMPERT

D Alexander Seifried, 2012/2014

A black or chrome-plated steel frame with two or three cushions stacked one upon the other and you will have a Little Tom upholstered stool, whose look is reminiscent of stacked Jaffa Cakes or doughnuts. With many different colour and material combinations to choose from. Here we show the version with the non upholstered top, which allows the stool to be stacked up.



D 13.8" x H 17.7"

SEAT

SOLID NATURAL OAK

transparent satin or open-pore
black lacquer

UPHOLSTERY AVAILABLE

FRAME

TUBULAR STEEL

powder coated

FRAME COLORS

- BLACK
- WHITE
- DAFFODIL YELLOW
- LIGHT PINK
- CHROME



Upholstery options (white cushion also available without upholstery)

LEATHER



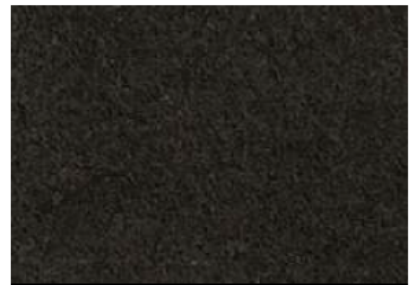
SMOOTH LEATHER black



SUEDE medium brown

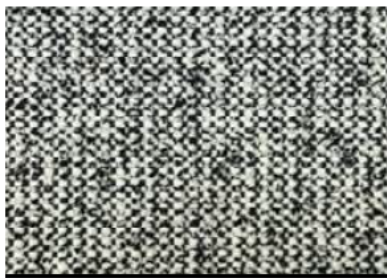


SUEDE mocca



SUEDE black

Category 1

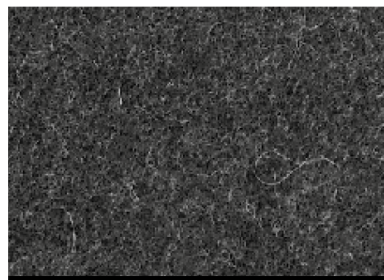


SALT& PEPPER

90% CO, 10% CV



FACET light grey



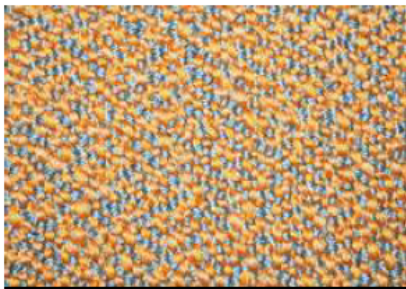
FACET dark grey



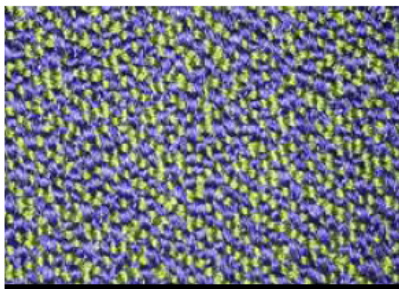
FACET brown

70% WO, 25% PA, 5% OF

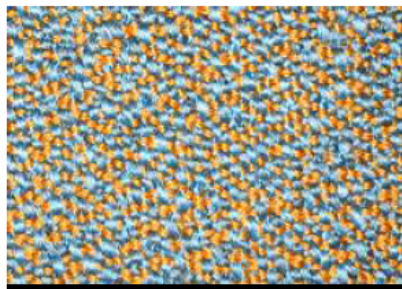
Category 2



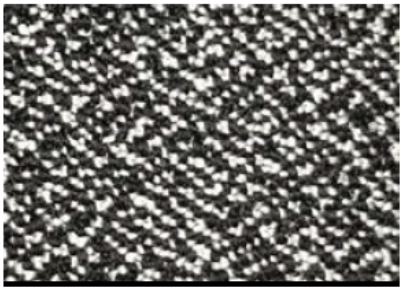
SERA arancio



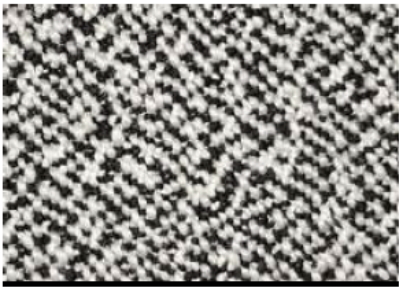
SERA mare



SERA mirage



SERA marmo



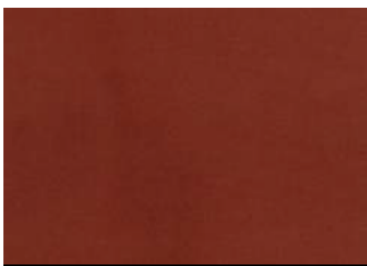
SERA ppepper

94% WQ, 6% PA

Category 3



VELOURS green



VELOURS earth

60% WQ, 20% PES, 20% PA



HALLINGDAL 65 00103



HALLINGDAL 65 002700



HALLINGDAL 65 0407

70% WQ, 30% CV

more options available uupon request



CLAY 0001



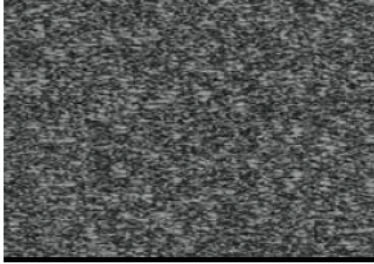
CLAY 0011



CLAY 0002

76% LI, 21% CO, 3% PES

more options available uupon request



ZERO 0014



ZERO 00008



ZERO 0012

65% CO, 20% PAN, 15% PES

more options available uupon request

Category 4



GENTLE 2 00133



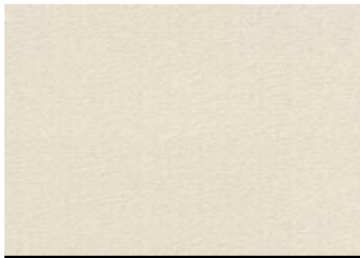
GENTLE 2 0683



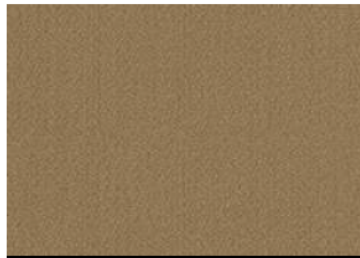
GENTLE 2 0873

60% WO, 20% PES, 20% PA

more options available uupon request



VIDAR 4 0106



VIDAR 4 0333



VIDAR 4 0872

94% WO, 6% PA

more options available uupon request