

Island Tom Pouf

M RICHARD LAMPERT
D Alexander Seifried, 2014

In 2014, the Tom family was extended. The new additions comprise the four-layer Pouffe, the three-layer Fat Tom featuring a steel tube frame, and Island Tom with a central backrest or armrest. Fat Tom is available with a diameter of 800 mm, Island Tom with a diameter of 1400 mm. Thanks to combinable covers in leather and textile, the Tom designs make for comfortable and personalised stools for the home or for waiting areas in the commercial sector. In Paris an entire cultural centre, including theatres and cinemas, has been furnished with the Tom designs.



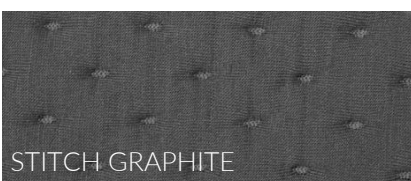
D 55.1" x H 31.5"
SEAT HEIGHT 17.7"

MATERIAL
FABRIC
LEATHER

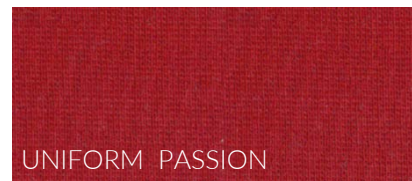
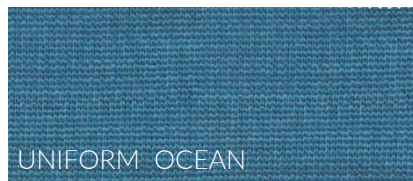
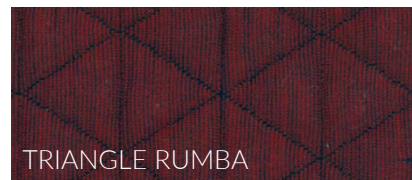
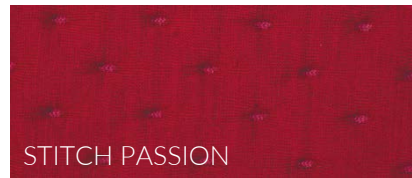
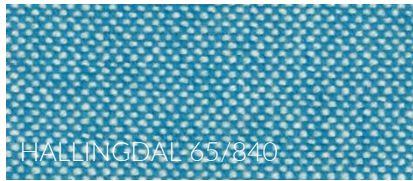
see page 3
more fabric available on request



FABRIC



FABRIC



FABRIC AND LEATHER

