

Fat Tom

M RICHARD LAMPERT
D Alexander Seifried, 2014

In 2014, the Tom family was extended. The new additions comprise the four-layer Pouffe, the three-layer Fat Tom featuring a steel tube frame, and Island Tom with a central backrest or armrest. Fat Tom is available with a diameter of 800 mm, Island Tom with a diameter of 1400 mm. Thanks to combinable covers in leather and textile, the Tom designs make for comfortable and personalised stools for the home or for waiting areas in the commercial sector. In Paris an entire cultural centre, including theatres and cinemas, has been furnished with the Tom designs.



D 31.5" x H 17.7"
three layers with legs
four layers without legs

LEGS

STAINLESS STEEL
POWDER COATED
BLACK OR CHROME

MATERIAL

FABRIC
LEATHER



Upholstery options (white cushion also available without upholstery)

LEATHER



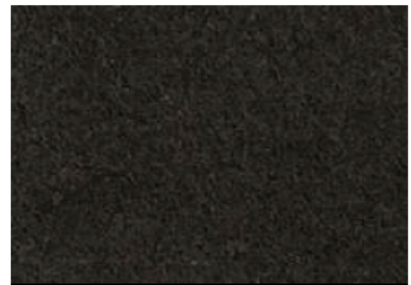
SMOOTH LEATHER black



SUEDE medium brown

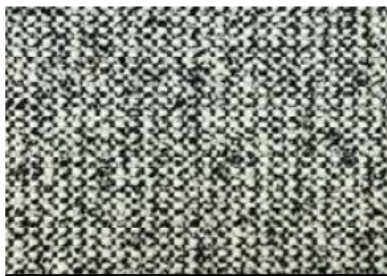


SUEDE mocca



SUEDE black

Category 1

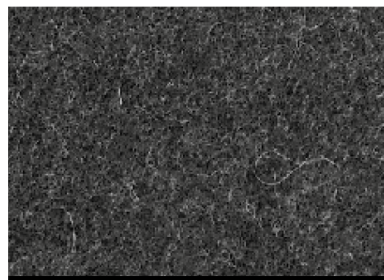


SALT& PEPPER

90% CO, 10% CV



FACET light grey



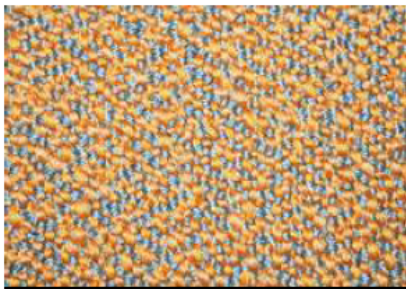
FACET dark grey



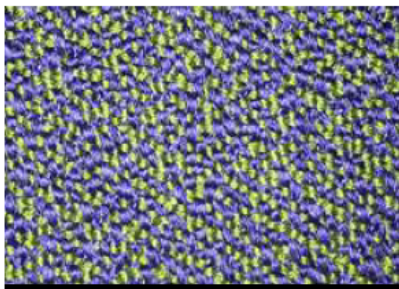
FACET brown

70% WO, 25% PA, 5% OF

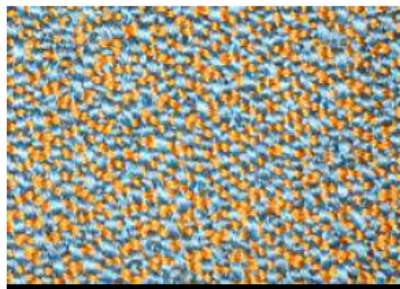
Category 2



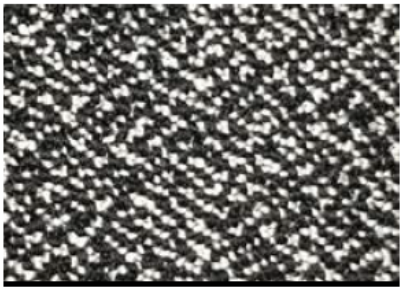
SERA arancio



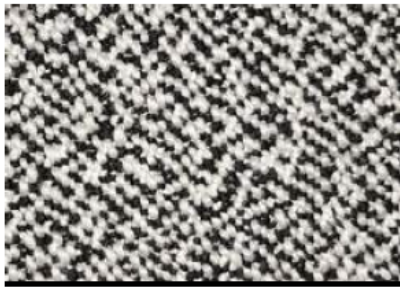
SERA mare



SERA mirage



SERA marmo



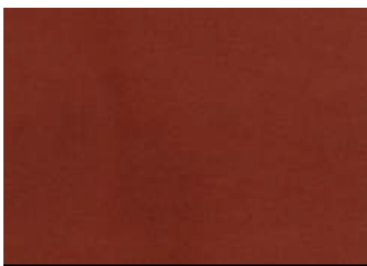
SERA pepper

94% WQ, 6% PA

Category 3



VELOURS green



VELOURS earth

60% WQ, 20% PES, 20% PA



HALLINGDAL 65 0103



HALLINGDAL 65 0270



HALLINGDAL 65 0407

70% WQ, 30% CV

more options available upon request



CLAY 0001



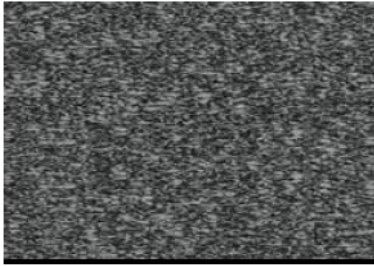
CLAY 0011



CLAY 0002

76% LI, 21% CO, 3% PES

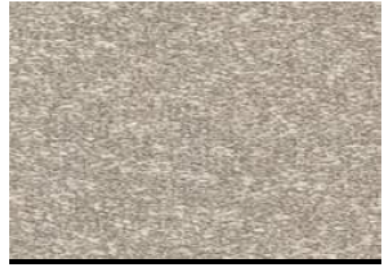
more options available upon request



ZERO 0014



ZERO 0008 ...



ZERO 0012

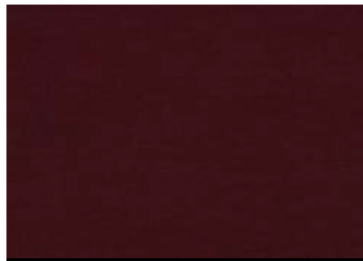
65% CO, 20% PAN, 15% PES

more options available upon request

Category 4



GENTLE 2 00133



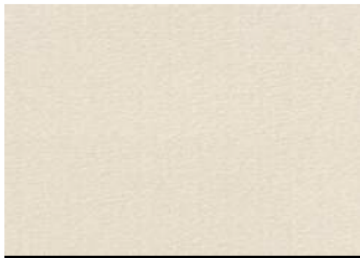
GENTLE 2 0683



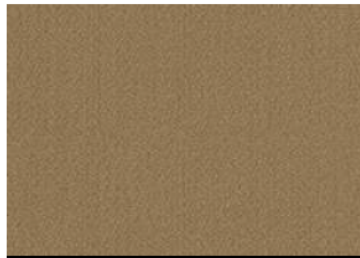
GENTLE 2 0873

60% WO, 20% PES, 20% PA

more options available upon request



VIDAR 4 0106



VIDAR 4 0333



VIDAR 4 0872

94% WO, 6% PA

more options available upon request