

Rattan Lounge Chair E10

M RICHARD LAMPERT
D Egon Eiermann, 1949

A milestone in the history of modern rattan furniture took place end of the forties. Through the activities the co-founder of the newly established German Council of Design, »Rat für Formgebung«: Egon Eiermann with his lounge Chair »E10« Eiermann created a new typography for rattan furniture.



W 35.4" x H 31.5"
SEAT HEIGHT 11.8"

MATERIAL
NATURAL RATTAN
RATTAN DARK BROWN

CUSHION
LIVENTO ECRU
SEE OPTIONAL
UPHOLSTERY BELOW



MATERIAL



NATURAL RATTAN
(color may vary)



RATTAN DARK BROWN

UPHOLSTERY

CLAY

76 % LI, 21 % CO, 3 % PES



0001



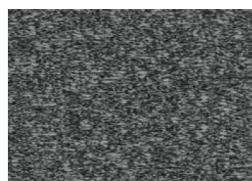
0011



0002

ZERO

65 % CO, 20 % PAN, 15 % PES



0014



0008



0012

