

## Hirche Lounge Chair

**M** RICHARD LAMPERT  
**D** Herbert Hirche, 1953

Herbert Hirche's design of this chair refers strongly to the ›Bauhaus‹, where Hirche was a student from 1930 to 1933, his main teacher being Mies van der Rohe. Afterwards Hirche worked in van der Rohe's office and later with Egon Eiermann. The ›Lounge Chair‹ was designed in 1953 during Hirche's time as professor at the Academy of Art in Stuttgart. Unusually enough, the chair never went beyond prototype stage. Only since the year 2000, Richard Lampert produces this classic with a variety of fabrics and cow skins.



**CHAIR**  
 W 22.4" x D 31.5" x H 27.2"  
 seat height 9.4"

**STOOL**  
 W 22.4" x D 22.4" x H 13.4"

**FRAME**  
 TUBULAR STEEL

- black
- white
- basalt grey
- bronze
- chrome

**UPHOLSTERY**  
 LEATHER  
 FABRIC

see options below



**Upholstery options** (white cushion also available with upholstery)

LEATHER



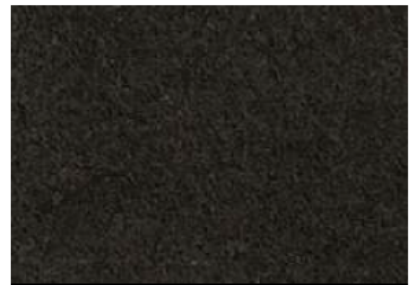
SMOOTH LEATHER black



SUEDE medium brown

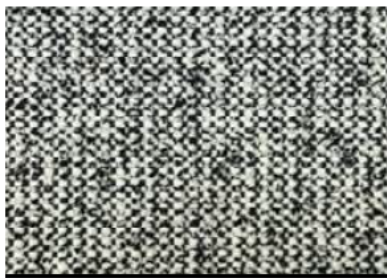


SUEDE mocha



SUEDE black

Category 1

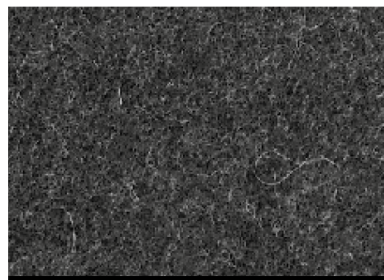


SALT PEPPER

90% CO, 10% CV



FACET light grey



FACET dark grey

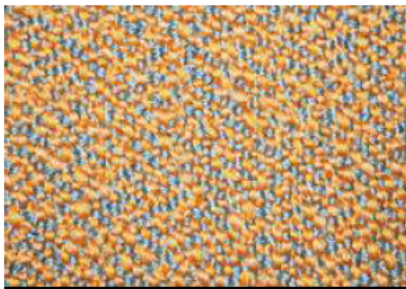


FACET brown

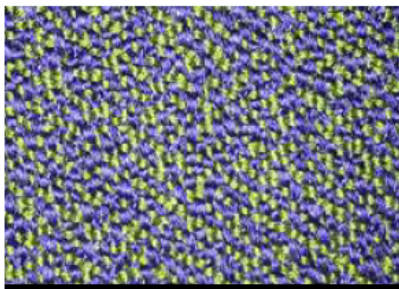
70% WO, 25% PA, 5% OF



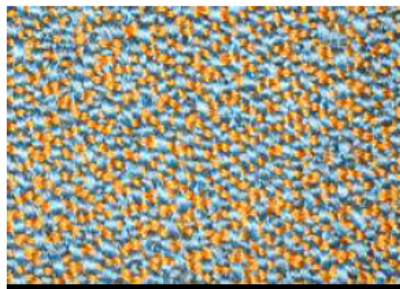
Category 2



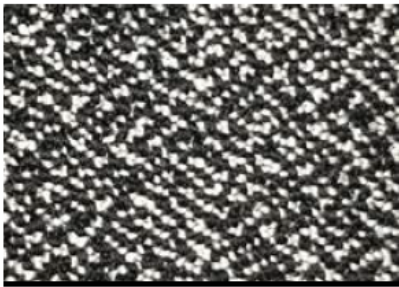
SERA arancio



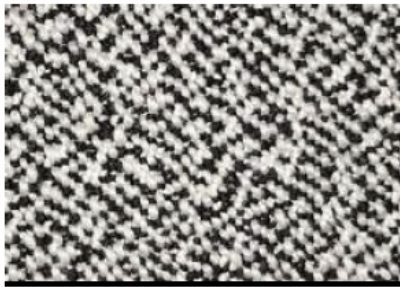
SERA mare



SERA mirage



SERA marmo



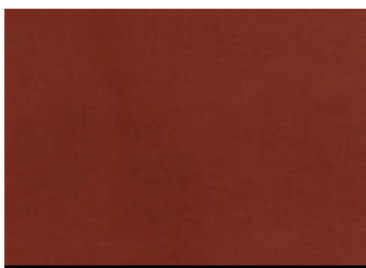
SERA e'er

94% WQ, 6% PA

Category 3

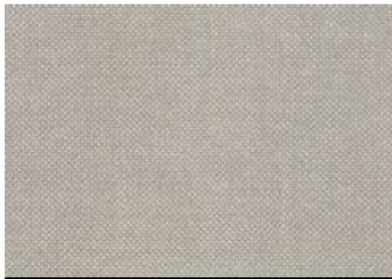


ELOURS green



ELOURS earth

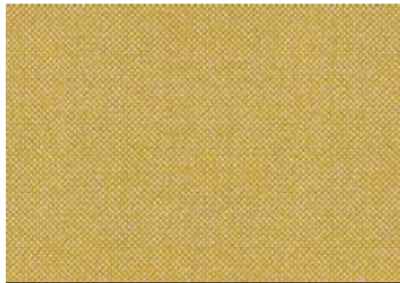
60% WQ, 20% PES, 20% PA



HALLINGDAL 5 1 3



HALLINGDAL 5 27



HALLINGDAL 5 4 7

70% WQ, 30% CV

more options available on request



CLAY 1



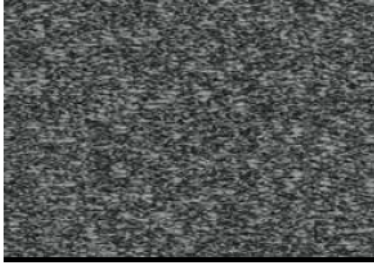
CLAY 11



CLAY 2

76% LI, 21% CO, 3% PES

more options available on request



ERO 14



ERO



ERO 12

65% CO, 20% PAN, 15% PES

more options available on request

Category 4



GENTLE 2 133



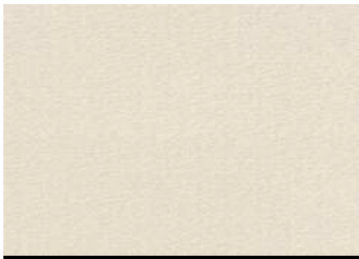
GENTLE 2 3



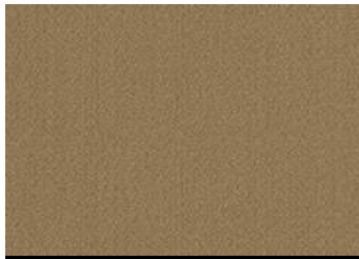
GENTLE 2 73

60% WO, 20% PES, 20% PA

more options available on request



IDAR 4 1



GENTLE 2 3



GENTLE 2 73

94% WO, 6% PA

more options available on request