

Hirche Lounge Chair

M RICHARD LAMPERT
D Herbert Hirche, 1953

Herbert Hirche's design of this chair refers strongly to the ›Bauhaus‹, where Hirche was a student from 1930 to 1933, his main teacher being Mies van der Rohe. Afterwards Hirche worked in van der Rohe's office and later with Egon Eiermann. The ›Lounge Chair‹ was designed in 1953 during Hirche's time as professor at the Academy of Art in Stuttgart. Unusually enough, the chair never went beyond prototype stage. Only since the year 2000, Richard Lampert produces this classic with a variety of fabrics and cow skins.



CHAIR
 W 22.4" x D 31.5" x H 27.2"
 seat height 9.4"

STOOL
 W 22.4" x D 22.4" x H 13.4"

FRAME
 TUBULAR STEEL

- black
- white
- basalt grey
- bronze
- chrome

UPHOLSTERY
 LEATHER
 FABRIC

see options below



Upholstery options (white cushion also available without upholstery)

LEATHER



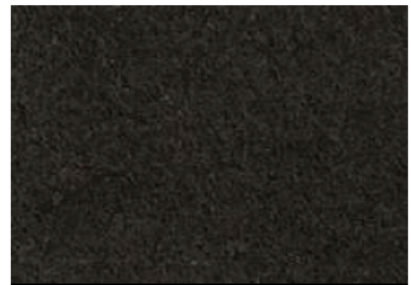
SMOOTH LEATHER black



SUEDE medium brown

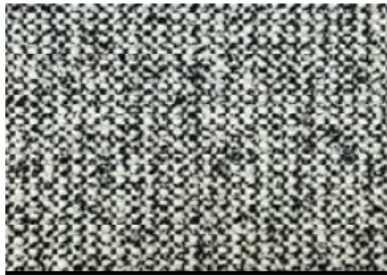


SUEDE mocca



SUEDE black

Category 1

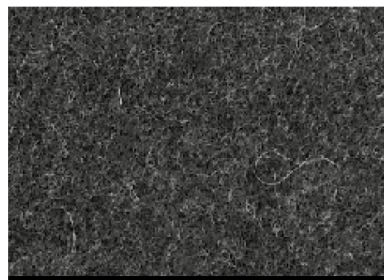


SALT& PEPPER

90% CO, 10% CV



FACET light grey



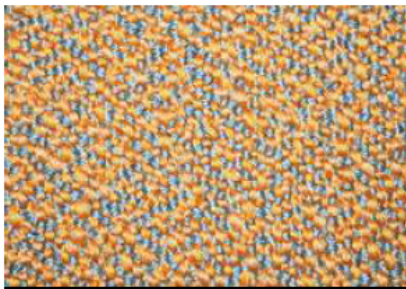
FACET dark grey



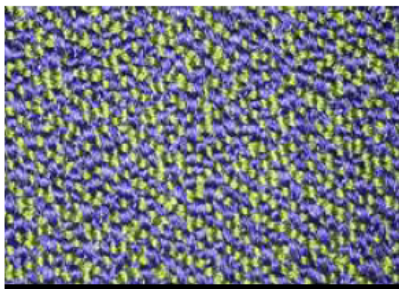
FACET brown

70% WO, 25% PA, 5% OF

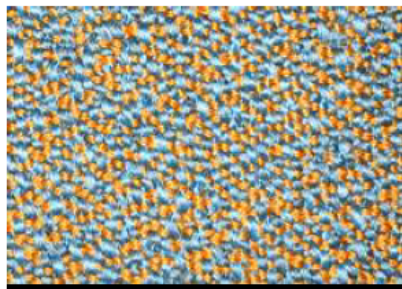
Category 2



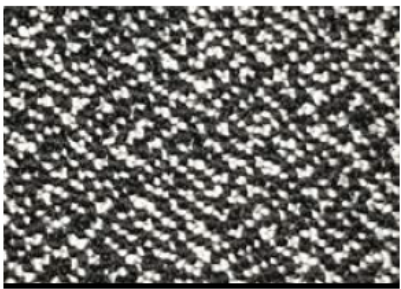
SERA arancio



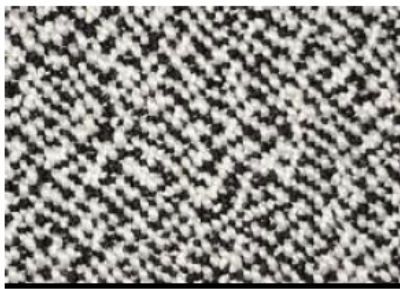
SERA mare



SERA mirage



SERA marmo



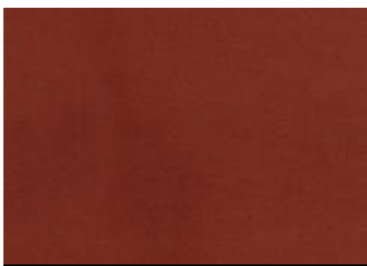
SERA pepper

94% WO, 6% PA

Category 3



VELOURS green



VELOURS earth

60% WO, 20% PES, 20% PA



HALLINGDAL 65 0103



HALLINGDAL 65 0270



HALLINGDAL 65 0407

70% WO, 30% CV

more options available upon request



CLAY 0001



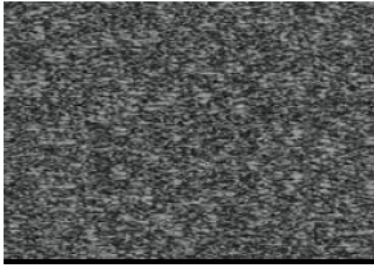
CLAY 0011



CLAY 0002

76% LI, 21% CO, 3% PES

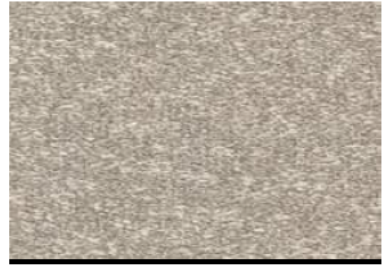
more options available upon request



ZERO 0014



ZERO 0008



ZERO 0012

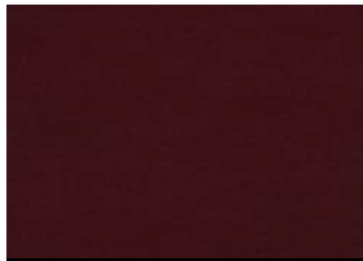
65% CO, 20% PAN, 15% PES

more options available upon request

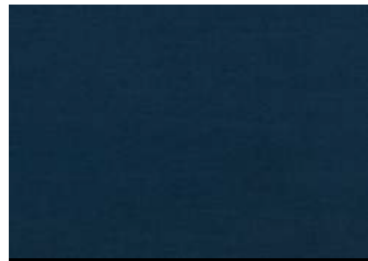
Category 4



GENTLE 2 0133



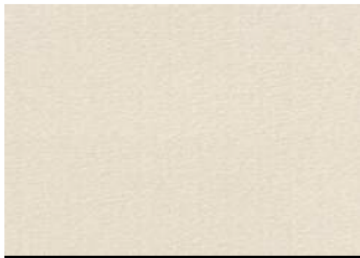
GENTLE 2 0683



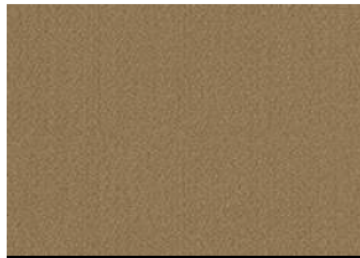
GENTLE 2 0873

60% WO, 20% PES, 20% PA

more options available upon request



VIDAR 4 0106



VIDAR 4 0333



VIDAR 4 0872

94% WO, 6% PA

more options available upon request