

## DL6 PLATO OTTOMAN

M LOEHR  
D DAVID LÖHR

PLATO was developed to supplement the EUCLIDES lounge chair. As an upholstered bench or ottoman, it completes the series of elegant, luxurious seating for furnishing extensive transit zones, galleries, or lobbies. An apparently floating seat is balanced on a slender tubular steel frame and offers a characteristically generous seating area, which makes it possible to linger for longer.



L 59.4" x W 20.2" x H 16.1"  
SEAT HEIGHT 16.1"  
SEAT DEPTH 19.7"

### FRAME

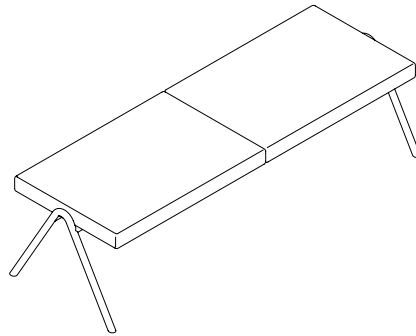
STEEL, POWDER-COATED  
STAINLESS STEEL, MIRROR-POLISHED

### COVER

FABRIC OR LEATHER  
(NOT GLUED TO PADDING)

### PADDING

COLD FOAM (PU), COMPOSITE FOAM (PU)  
WOOL FELT



L 59.4" x W 20.2" x H 16.1"  
SEAT HEIGHT 16.1"  
SEAT DEPTH 19.7"



#### FRAME

-  stainless steel, mirror-polished
-  jet black (RAL 9005)
-  signal white (RAL 9003)
-  light grey (RAL 7035)

#### UPHOLSTERY

FABRICS (price group):  
Forest Nap (A) / Atlas (A) / Canvas (B) / Steelcut Trio (B)  
Vldar (C) / Basel (C)

LEATHER (price group):  
Classic Nappa (D) / Ranchero aniline leather (E)  
Walky Nubuk velour leather (E)

Detailed information in the document *fabrics and leathers*.

#### MATERIAL AND SURFACES

##### frame

- steel, powder-coated
- stainless steel, mirror-polished

##### upholstery

- cover fabric or leather, not glued to the padding
- padding: cold foam (PU), composite foam (PU), wool felt

##### parts

- seat shell stainless sheet steel
- gliders high-tech plastic, wool felt
- steel screws, galvanized



#### SPECIFICATIONS

- The structural steel used is from European production, grade according to EN 10027: S235JR+AR, WNr. 1.0038.
- Polyester resin-based powder-coatings on metal parts are solvent-free and do not contain heavy metals (REACH and RoHS compliant). The recovery rate of excess powder is 99%.
- Pure stainless steel surfaces use European manufactured stainless steel according to EN 10020, WNr. 1.4301 / SUS304.
- Stainless sheet steel from European production, quality V2A (1.4301), cold rolled.
- The upholstery fabrics used in this product are sourced from the Danish manufacturer kvadrat and come from European production. Details regarding specifications and certificates can be obtained from the manufacturer or is displayed in the document fabrics and leathers.
- The leather used is ecologically mineral tanned in Germany. The raw material stems from sustainable European animal husbandry. Detailed information can be found in the document fabrics and leathers.

☺ 1 seat (ottoman) / 2 seats (bench)

♻️ This product is 75% recyclable. The remaining 25% refer to the padding which is only thermally recyclable.





#### TRANSPARENCY

The steel frames for PLATO are manufactured in a metal construction company in Saxony, 250km from Berlin. The processing requires the most careful and precise craftsmanship. The quality of the work can be seen in the detail, the cleanly finished welding seams and the surface quality. The raw frames are sent to Berlin and powder-coated or mirror-polished by local partners. The seat shells are industrially manufactured in Berlin and then further processed by an upholstery workshop, also located in Berlin. The upholstery fabrics are purchased centrally at kvadrat Germany in Bad Homburg, while the leathers are purchased from a dealer in Lower Saxony, who is specialized in furniture leather.



# FABRICS AND LEATHER 2020



For our upholstered furniture, we offer a range of selected fabrics and leathers, which stand in accordance with our furniture regarding quality and materiality. We obtain fabrics from the Danish manufacturer Kvadrat, a brand that manufactures highest quality fabrics since 1954 specifically for the furniture sector. Leathers are sourced from German tanneries and dealers.

The upholstery options are sorted by price groups A to E accordingly to the qualities of the material.

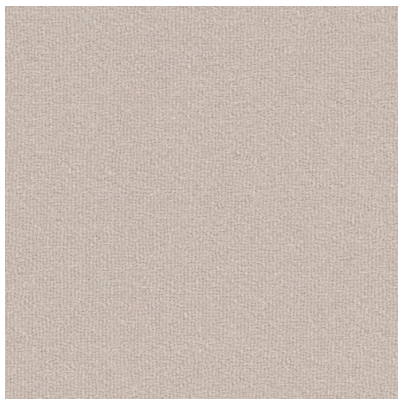
[www.kvadrat.dk](http://www.kvadrat.dk)



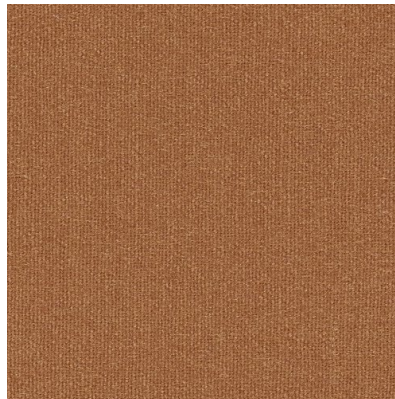
# Forest Nap

A soft wool fabric with a dense and fine weave in a nature-inspired palette.  
Akira Minagawa for Kvadrat

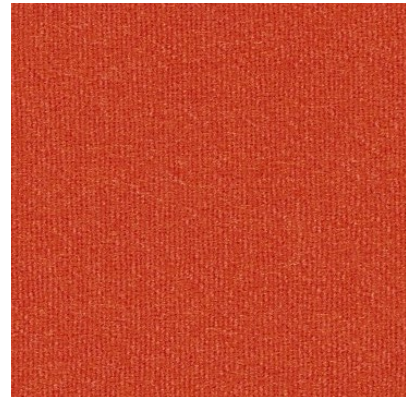
480 g/lin.m  
90% New wool worsted, 10% Nylon  
complies with EU ecolabel "The Flower"



Mushroom (212)



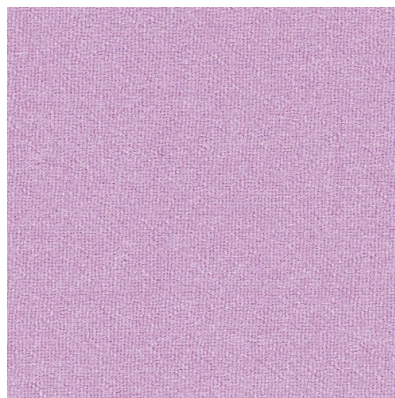
Clay (252)



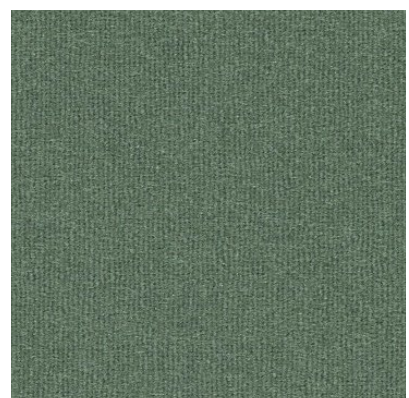
Poppy (552)



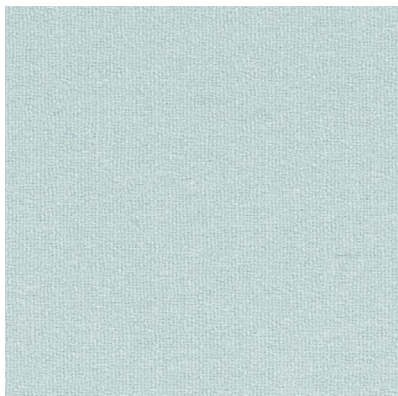
Sakura (512)



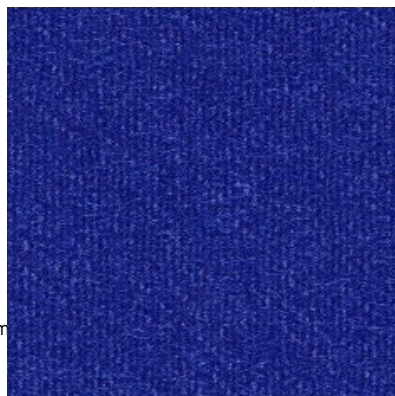
Foxglove (612)



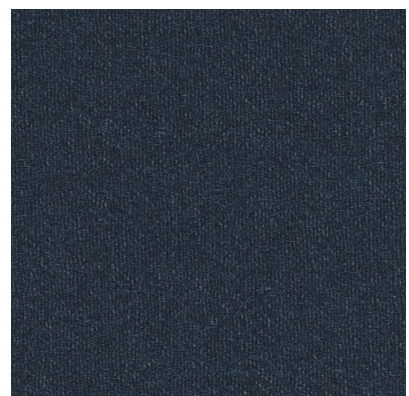
Leaf (952)



Dew (912)



Ultramarine (782)



Indigo (792)

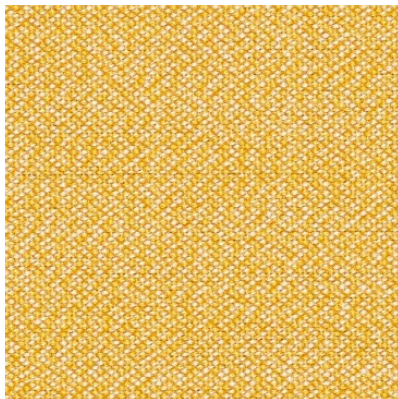
Colour representation is not binding; colours may vary.



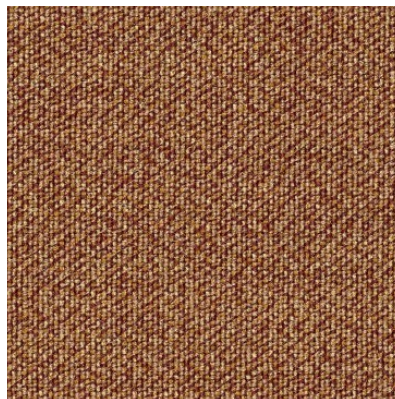
# Atlas

A fine wool fabric with a mélangé expression and meticulously nuanced colour blends.  
Margrethe Odgaard for Kvadrat

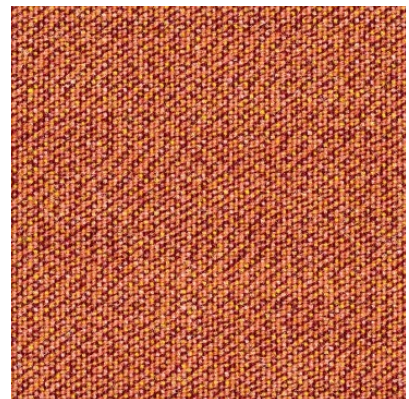
400 g/lin.m  
90% New wool worsted, 10% Nylon  
complies with EU ecolabel "The Flower"



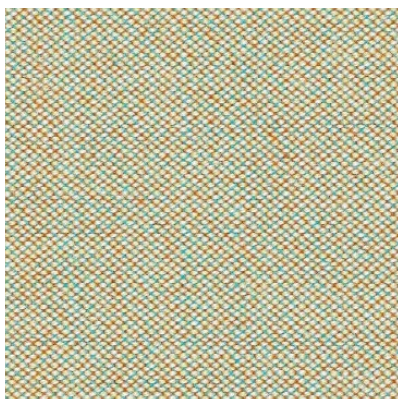
Gobi (451)



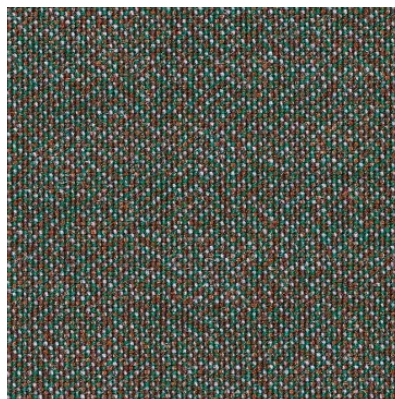
Dakota (471)



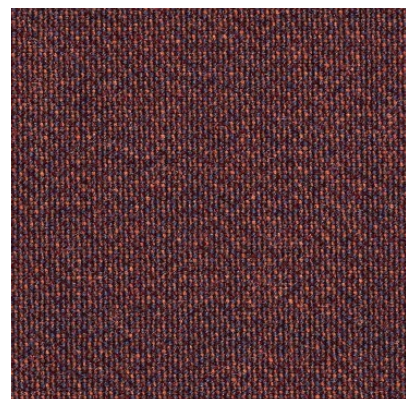
Colorado (561)



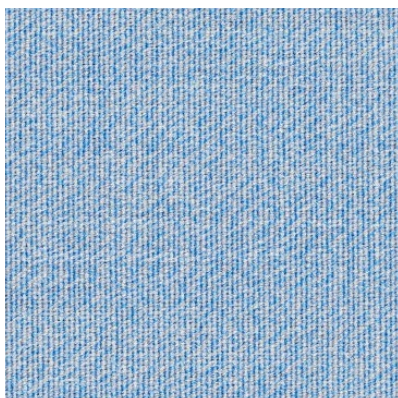
Ganges (911)



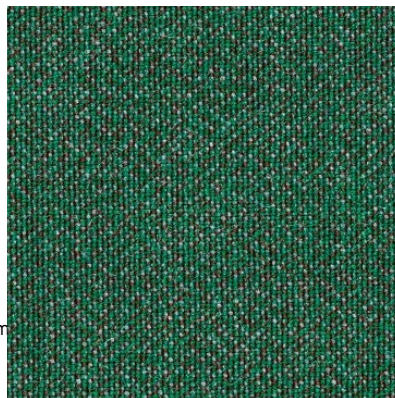
Siberia (961)



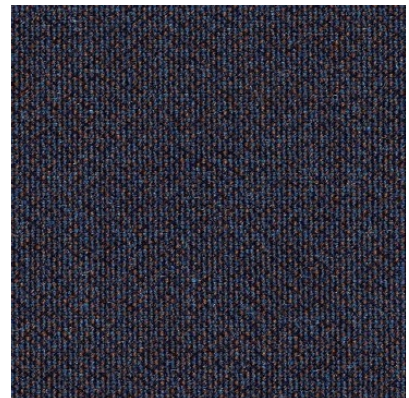
Maui (681)



Aral (711)



Amazon (951)



Sargasso (881)

Colour representation is not binding; colours may vary.



## Canvas

A fine wool fabric with a smooth, mottled texture in muted natural tones.

480 g/lin.m  
90% New wool worsted, 10% Nylon  
complies with EU ecolabel "The Flower"



Rose (216)



Linen (114)



Quartz (716)

Colour representation is not binding; colours may vary.

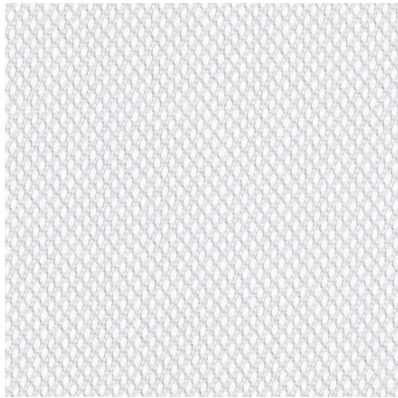
## Steelcut Trio

A strong, textured wool fabric with a contrasting three-coloured weave.

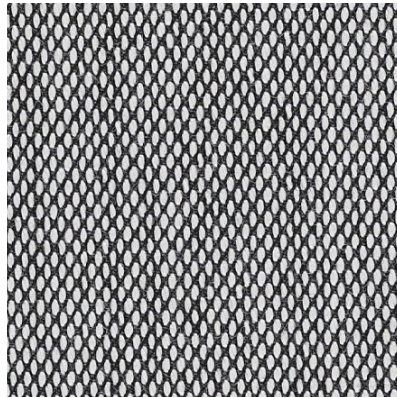
825 g/lin.m

New wool worsted, 10% Nylon

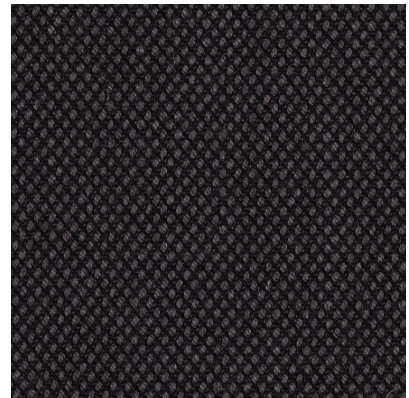
90% complies with EU ecolabel "The Flower"



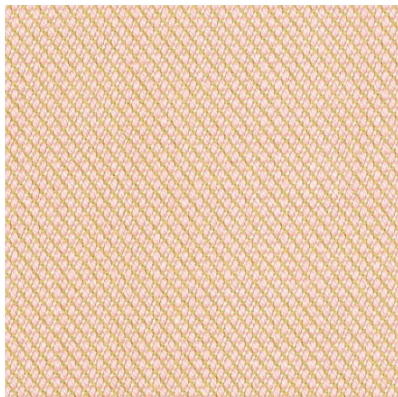
Salt (906)



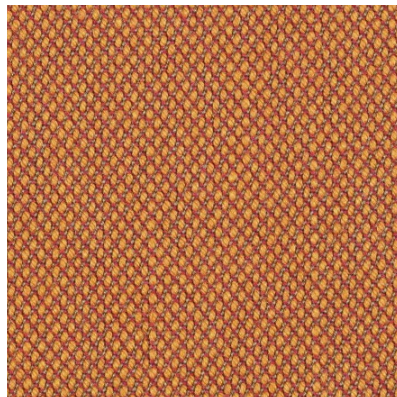
Pepper (124)



Truffle (383)



Salmon (506)



Curry (576)



Muscat (476)

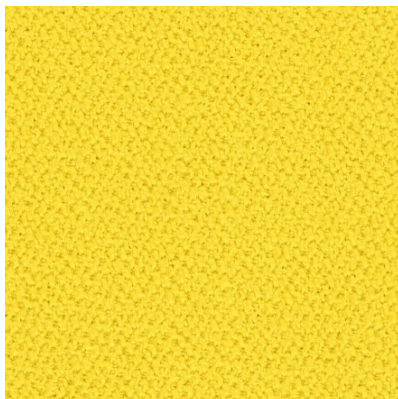
Colour representation is not binding; colours may vary.



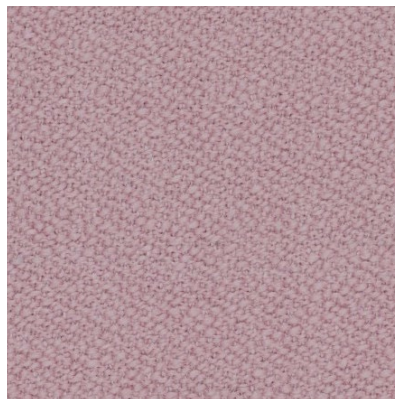
# Vidar

A monochrome, structured wool fabric with bold colours. Raf Simons for Kvadrat

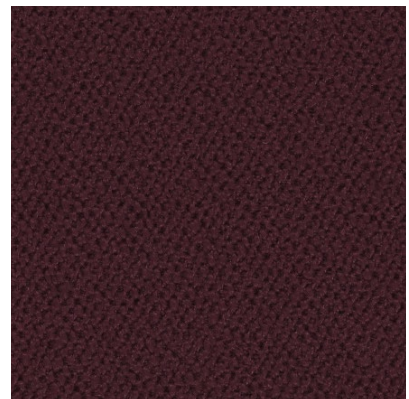
765 g/lin.m  
94% New wool, 6% Nylon



Yellow (443)



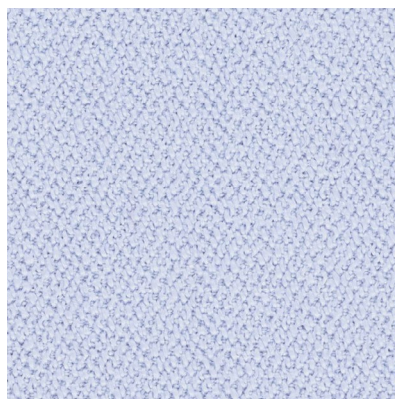
Lilac (633)



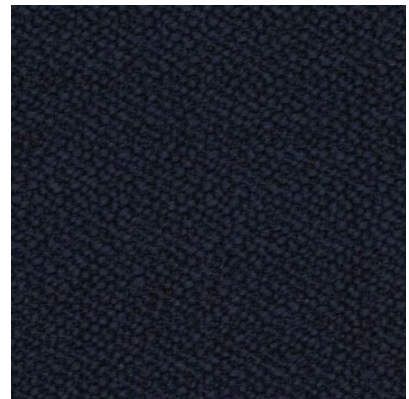
Plum (693)



Fog (913)



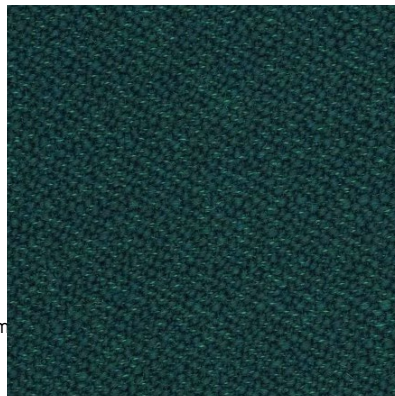
Polar (723)



Navy (554)



Wheat (333)



Moss (1062)

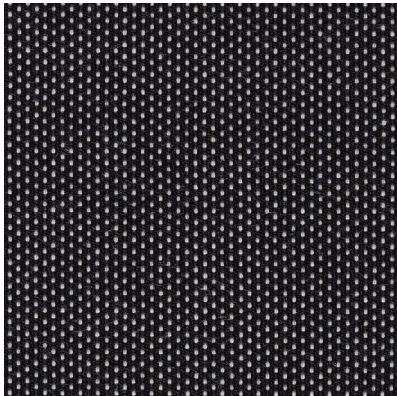


Coal (1880)

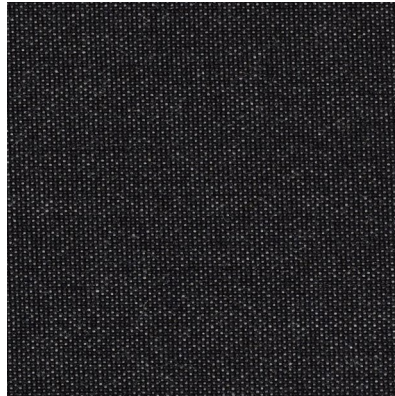
## Basel

A patterned wool fabric with a monochrome weave.  
Herzog & de Meuron for Kvadrat

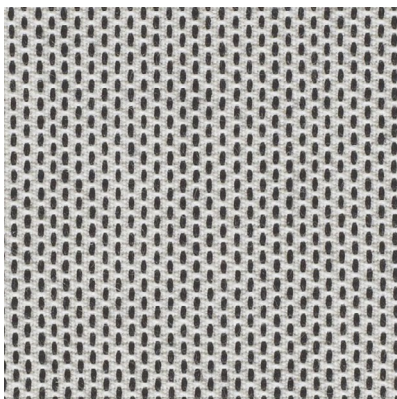
510 g/lin.m  
90% New wool worsted, 10% Nylon



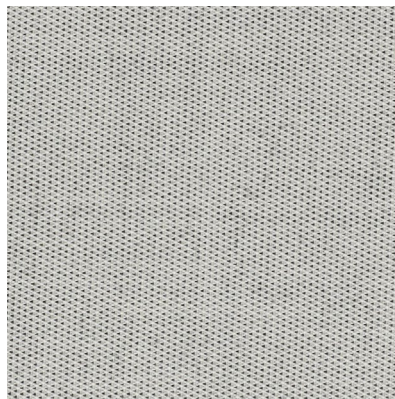
189



187



129



127

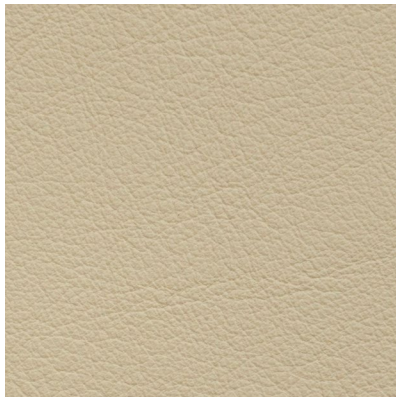
Colour representation is not binding; colours may vary.



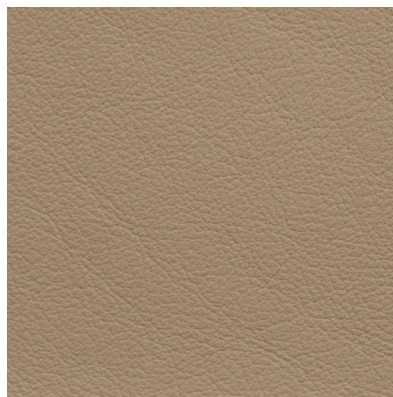
## Classic Nappa

Drum-dyed full-grain cowhide.

Dicke / thickness: 1-1,2mm



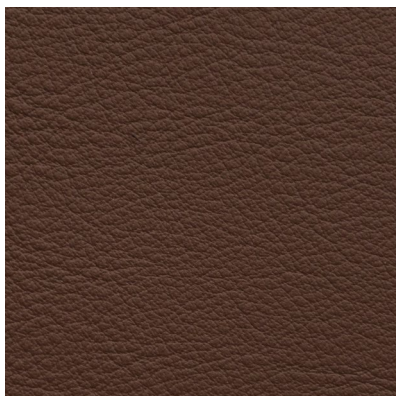
sahara



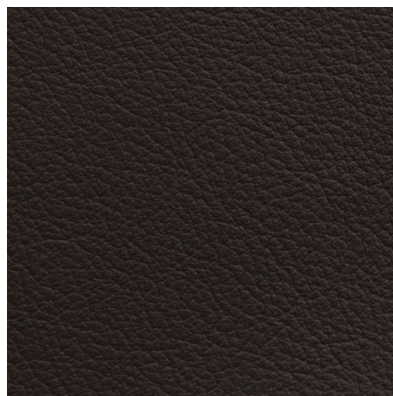
beige



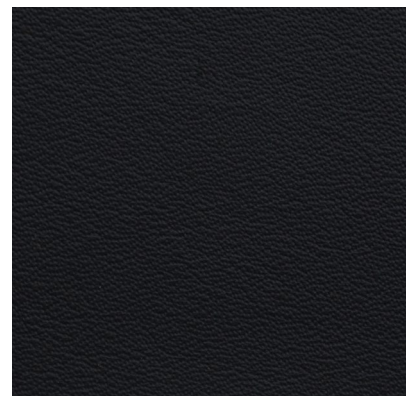
zimt / cinnamon



terra



grizzly



tiefschwarz / jet black

Colour representation is not binding; colours may vary.

## Ranchero

Finest natural cowhide, aniline dyed.

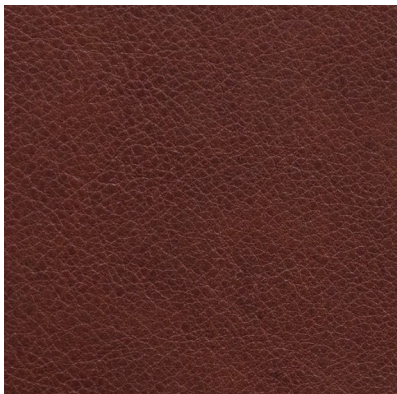
thickness: 0,9-1,1mm



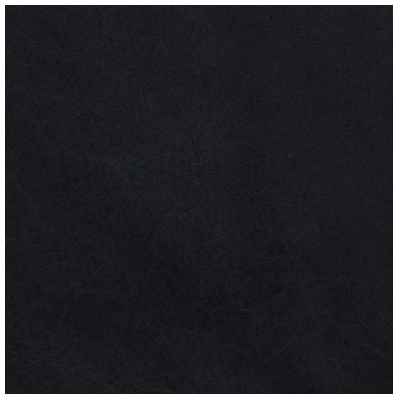
camel



natural



kastanie / chestnut



schwarz / black

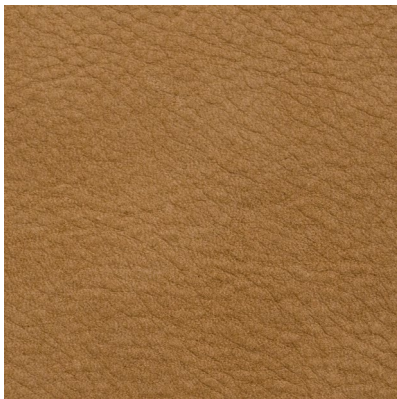
Colour representation is not binding; colours may vary.



## Walky Nubuk

Nubuck velour leather with a natural pebbled grain.

thickness: 1,4-1,6mm  
made in Germany



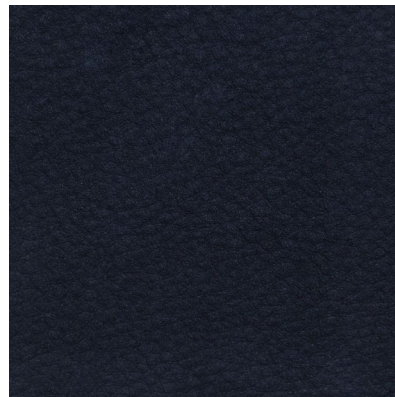
havanna



cognac



lava



marine

Colour representation is not binding; colours may vary.