

ST8

M HUSSL
D EOOS

The basic design idea behind the ST8 is the complete rethinking of the archetypal timber chair from the inside out. This creative process begins in the heart of the chair with the reinterpretation of the defining supporting role of its classical frame construction. If one now turns the finished chair on its head, the surprise is complete! The ST8 is substantial, comfortable, light. The chair is easy to pick up and move. Up to six chairs can be stacked on top of each other without this stackability becoming the dominant visual feature.



DIMENSIONS

W 18.9" X D 19.3" X H 31.1"
SEAT HEIGHT 18.3"

MATERIAL

ASH
oiled/laquered/stained
OAK
laquered/oiled

UPHOLSTERY

FABRIC
LEATHER



ASH



NATURAL LAQUERED



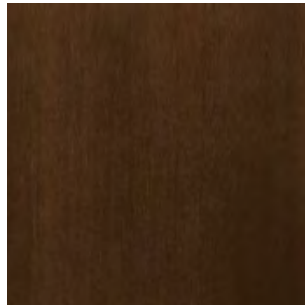
NORDIC STAINED



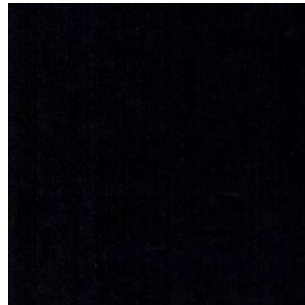
NATURAL OILED



WHITE OILED



WALNUT STAINED



BLACK STAINED

ASH STAINS



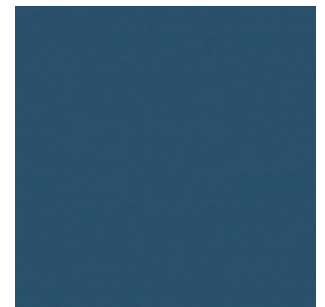
TITAN 18



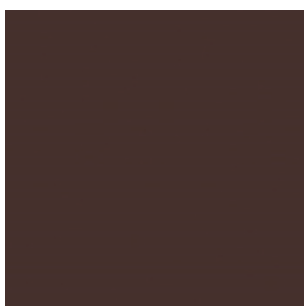
ROSE 11



ICE 11



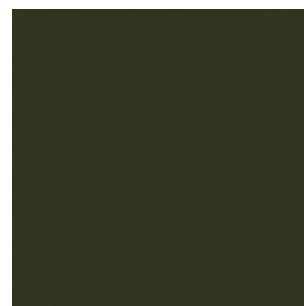
VINCENT 18



EGGPLANT 18



LIME 11



OLIVE 18

OAK



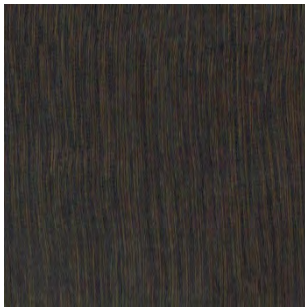
NATURAL



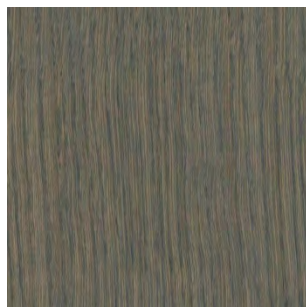
OAK NORDIC



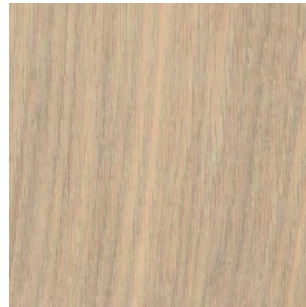
NATURAL OILED



CHARCOAL, OILED



SLATE GREY, OILED



COTTON, OILED