

## CORA COLLECTION

M EGOÉ

D DAVID KARÁSEK, RADEK HEGMAN

Practicality is the main asset of the Cora chair which makes it the most versatile Egoé product. Its distinctiveness lies within the fact that it fits literally anywhere. Cora chairs can be used as contemporary furniture of a stylish café but they will look just as great in a garden, on a terrace or on a balcony at home. The chairs are stackable.



### CHAIR AND ARMCHAIR

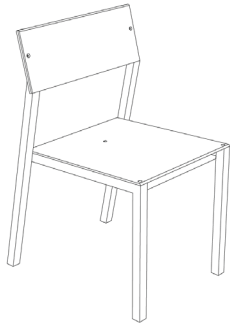
**FRAME**  
POWDER COATED ALUMINUM

**SEAT AND BACKREST**  
SOLID ROBINA  
SOLID IPE  
HPL  
BATYLINE

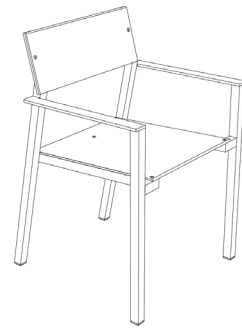
### TABLE

**FRAME**  
POWDER COATED ALUMINUM

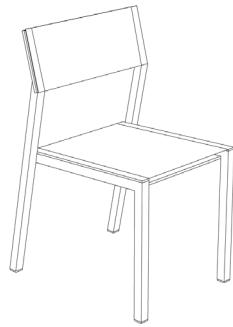
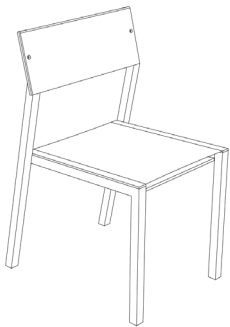
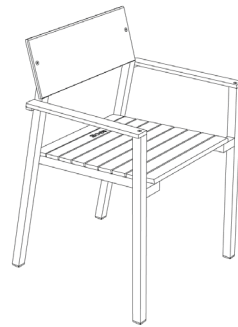
**TABLE TOP**  
SOLID ROBINA  
SOLID IPE  
HPL

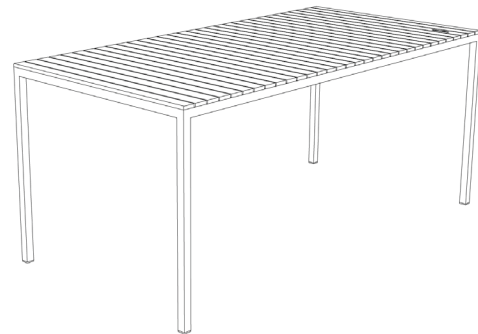
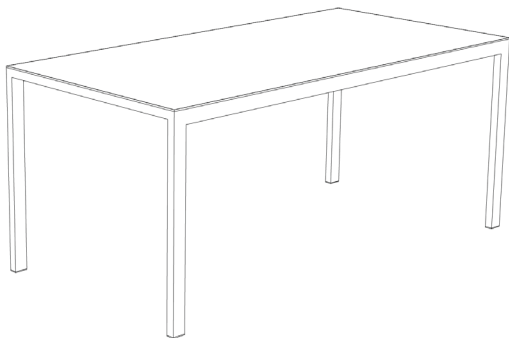
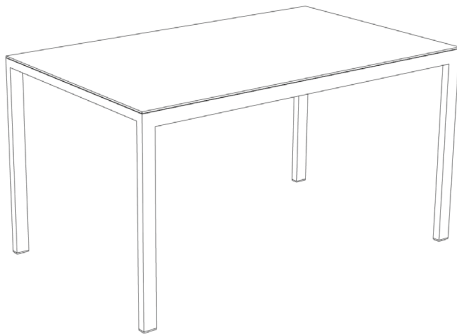
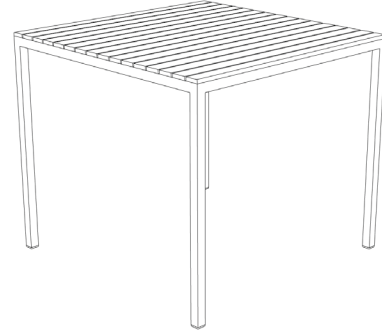
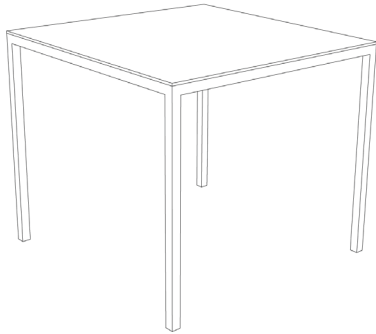


CHAIR  
W 19.5" x D 22.0" x H 33.5"  
SEAT HEIGHT 18.9"



ARMCHAIR  
W 23.0" x D 23.0" x H 33.5"  
SEAT HEIGHT 18.9"





TABLE

L 34.1" x W 34.1" x H 29.9"

L 55.7" x W 34.1" x H 29.9"

L 68.7" x W 34.1" x H 29.9"









RAL Swatch 2022



## Wood

robinia with oil



robinia



IPE



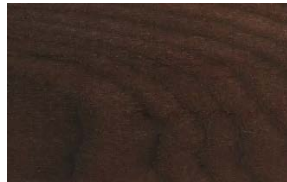
IPE with oil



thermoash

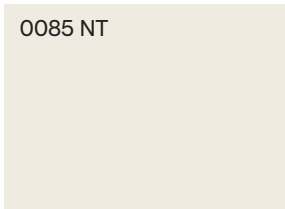


thermoash with oil

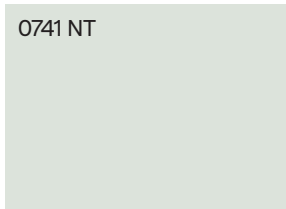


## HPL

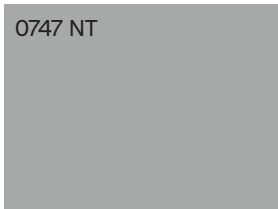
0085 NT



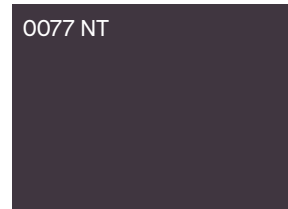
0741 NT



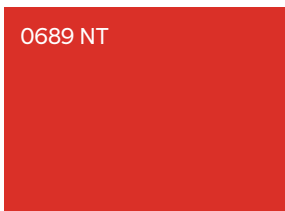
0747 NT



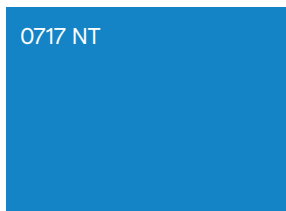
0077 NT



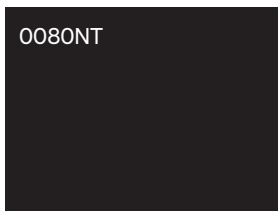
0689 NT



0717 NT



0080NT



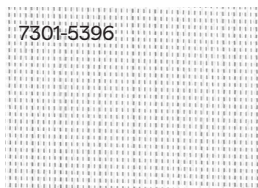
## Textile

Batylne DUO, ISO seats, backrests and laying surface, head rests

7407-5001



7301-5396



7407-5011



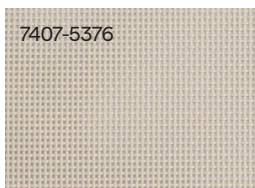
7407-5381



7407-5367



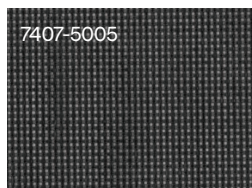
7407-5376



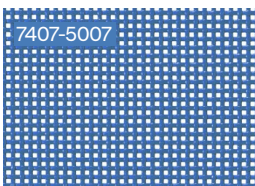
7407-50070



7407-5005



7407-5007



7407-5004

