

THOR BENCH

M ARTISAN
D FAHMIDA LAM

Artisan uses solid wood from renewable resources in their production, only environmentally-friendly materials for treatment, natural oils and wax that emphasize the luxurious and organic beauty of wood texture and that enable it to "breathe" naturally. This emphasizes the natural color diversity, while the use of harmful chemical substances for wood treatment is avoided by using vinyl-based glue.

Pure nature, transformed and formed into one of the most honest designs.



L 47.2" x W 17.7" x H 16.9"
L 59.1" x W 19.7" x H 16.9"
L 70.8" x W 19.7" x H 16.9"

WOOD FINISHES

OAK
EUROPEAN WALNUT
AMERICAN WALNUT ASH
CHERRY
ELM
MAPLE

WOOD COLOR

VARIOUS COLOR OPTIONS

UPHOLSTERY

FABRIC
LEATHER





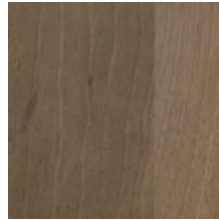
WOOD



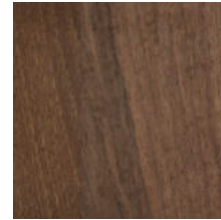
AMERICAN WALNUT
AO1 NATURAL SOAP



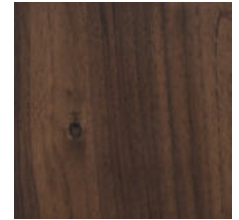
AMERICAN WALNUT
AO3 NATURAL OIL



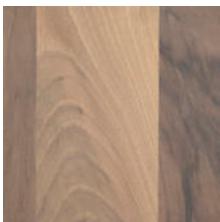
EUROPEAN WALNUT
AO1 NATURAL SOAP



EUROPEAN WALNUT
AO3 NATURAL OIL



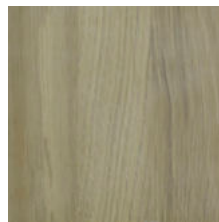
EUROPEAN WALNUT WITH KNOTS
AO3 NATURAL OIL



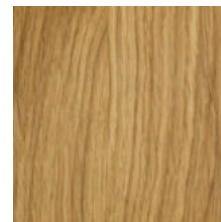
EUROPEAN WALNUT
AO4 WHITE OIL



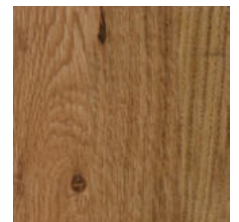
OAK AO1 NATURAL SOAP



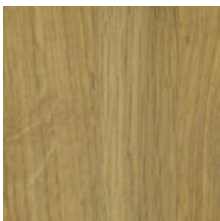
OAK A3 LOBA WHITE OIL



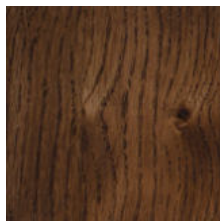
OAK AO3 NATURAL OIL



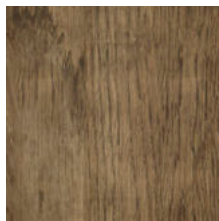
OAK AO3 NATURAL OIL WITH
KNOTS



OAK AO4 WHITE PIGMENTED OIL



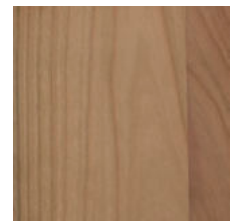
OAK WENGE OIL



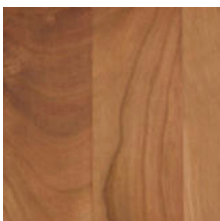
OAK AR1 JAHORINA PIGMENT



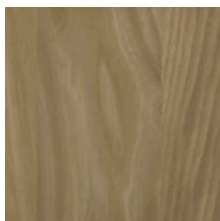
ASH AO4 WHITE PIGMENTED OIL



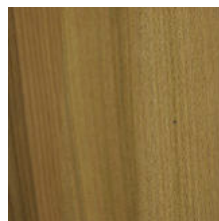
CHERRY AO1 NATURAL SOAP



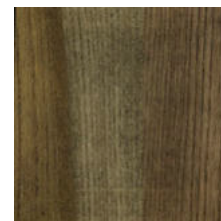
CHERRY AO3 NATURAL OIL



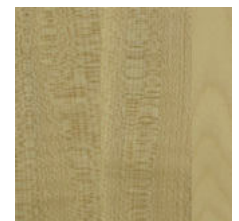
ELM AO1 NATURAL SOAP



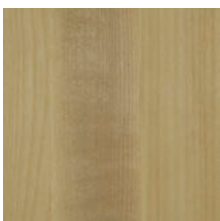
ELM AO3 NATURAL OIL



ELM AR1 JAHORINA PIGMENT



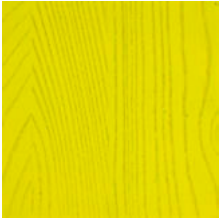
MAPLE AO1 NATURAL SOAP



MAPLE
AO4 WHITE PIGMENTED OIL

As wood is a natural product, variations in color and pigmentation will occur. Wooden furniture will also change appearance over time as it is affected by the environment in which it is placed.

COLORED WOOD



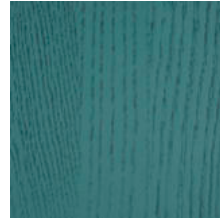
RAL 1016 (YELLOW)



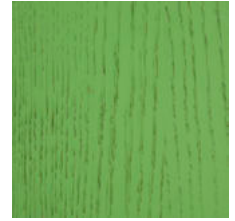
RAL 3014 (PINK)



RAL 5023 (TRUE BLUE)



RAL 5024 (BLUE)



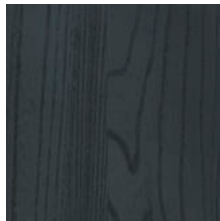
RAL 6019 (GREEN)



RAL 6034 (TURQUOISE)



RAL 7011 (DARK GREY)



RAL 7016 (BLACK)



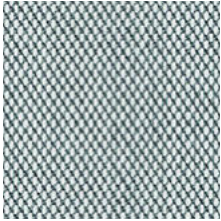
RAL 7045 (LIGHT GREY)



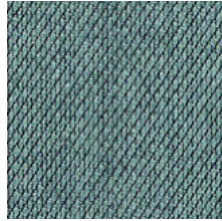
RAL 9003 (WHITE)

FABRIC SAMPLES

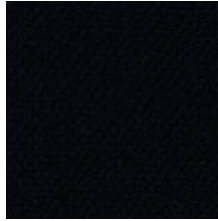
KVADRAT | STEELCUT TRIO 3



Steelcut Trio 3 | 133



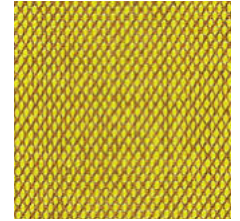
Steelcut Trio 3 | 153



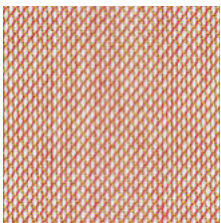
Steelcut Trio 3 | 195



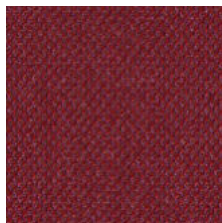
Steelcut Trio 3 | 213



Steelcut Trio 3 | 453



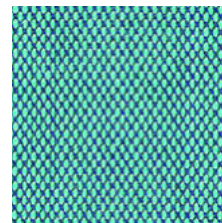
Steelcut Trio 3 | 515



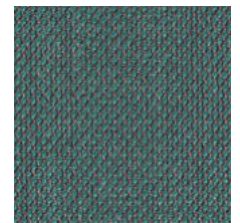
Steelcut Trio 3 | 686



Steelcut Trio 3 | 776



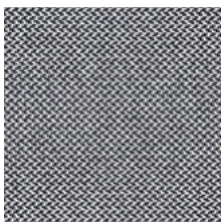
Steelcut Trio 3 | 983



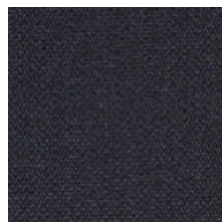
Steelcut Trio 3 | 996

FABRIC SAMPLES

KVADRAT | REVIVE 1



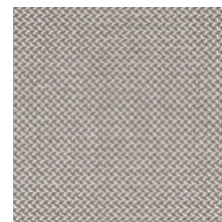
Revive 1 | 154



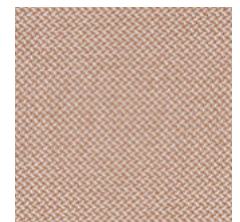
Revive 1 | 184



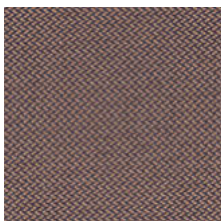
Revive 1 | 224



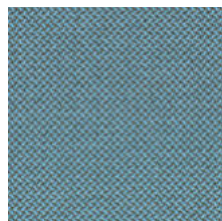
Revive 1 | 324



Revive 1 | 414



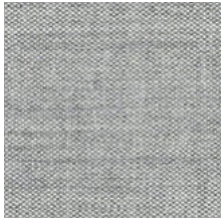
Revive 1 | 454



Revive 1 | 834

FABRIC SAMPLES

KVADRAT | REMIX 3



Remix 3 | 123



Remix 3 | 223



Remix 3 | 242



Remix 3 | 373



Remix 3 | 383



Remix 3 | 422



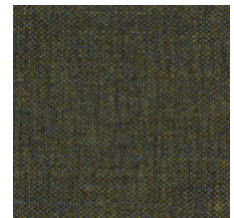
Remix 3 | 612



Remix 3 | 662



Remix 3 | 672



Remix 3 | 842

FABRIC SAMPLES

DEDAR | KARAKORUM



Karakorum 001



Karakorum 003



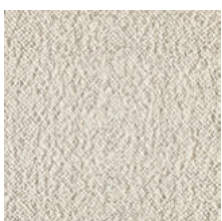
Karakorum 004



Karakorum 005



Karakorum 006



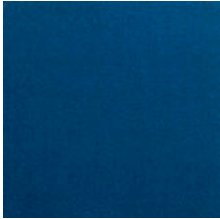
Karakorum 007



Karakorum 008

FABRIC SAMPLES

DEDAR I ADAMO & EVA



Adamo & Eva 104



Adamo & Eva 118



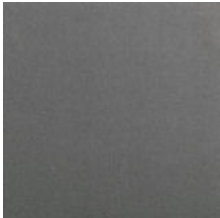
Adamo & Eva 120



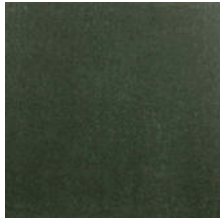
Adamo & Eva 135



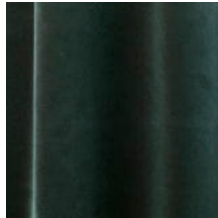
Adamo & Eva 138



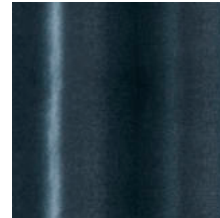
Adamo & Eva 139



Adamo & Eva 144



Adamo & Eva 169



Adamo & Eva 170



Adamo & Eva 172



Adamo & Eva 176



Adamo & Eva 178

LEATHER

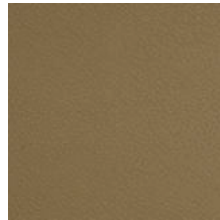
ZENITH



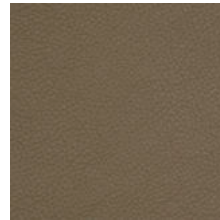
Zenith 9001



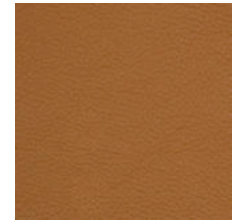
Zenith 9007



Zenith 9008



Zenith 9009



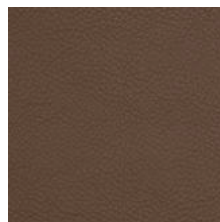
Zenith 9010



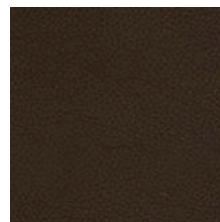
Zenith 9011



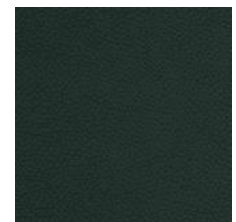
Zenith 9013



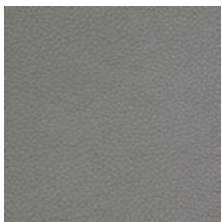
Zenith 9014



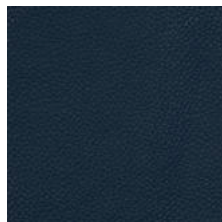
Zenith 9015



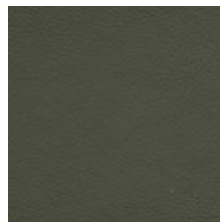
Zenith 9018



Zenith 9019



Zenith 9021



Zenith 9022



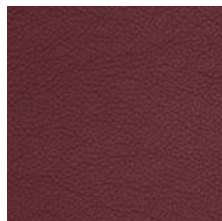
Zenith 9023



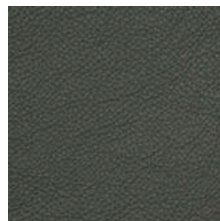
Zenith 9024



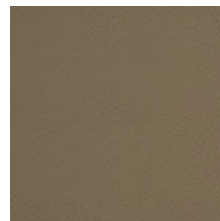
Zenith 9025



Zenith 9026



Zenith 9032



Zenith 9033



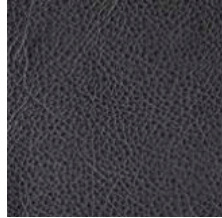
Zenith 9035

LEATHER SAMPLES

SELECT



Select 112



Select 301



Select 306



Select 307



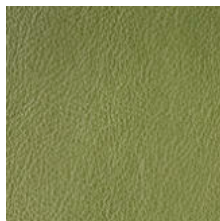
Select 350



Select 359



Select 377



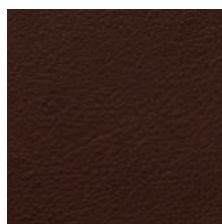
Select 620

LEATHER SAMPLES

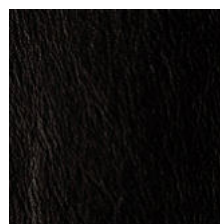
STOLZ | VEGETAL



Vegetal 95



Vegetal 96



Vegetal 98

FABRICS

collection	brand	specification	piling	martindale cycles	light fastness	care
Remix 3	Kvadrat	90% new wool worsted 10% nylon	4	100.000	6	
Revive 1	Kvadrat	100% recycled polyester FR	4/5	60.000	6/7	
Steelcut Trio 3	Kvadrat	90% new wool worsted 10% nylon	4	100.000	6/7	
Adamo/Eva	Dedar	100% cotton WR	4/5	50.000	-	
Karakorum	Dedar	42% wool, 33% viscose, 24% cotton, 1% polyamide	4/5	40.000	-	

LEATHERS

collection	brand	origin	thickness	surface
Zenith	Mastrotto	Bovine of Asian origin	0.8-1 mm	corrected and embossed
Select	Stolz	Scandinavian bullhides	1.2-1.4 mm	pigmented nappa with fine grainstructure
Vegetal	Stolz	Scandinavian bullhides	1.2-1.4 mm	aniline