

NEVA ARMCHAIR

M ARTISAN
D REGULAR COMPANY

The character of the Neva chair derives from the poetics of the wave, suggested by the continuous line that moves from the front leg to the arm and from the armrest to the back. And like a wave, the chair is totally fluid and rounded, soft in its transitions. Maximally thin, extremely light, it completely reflects the technological process that created it, that is, the combination of 5-axis CNC technology and the precise hand finishing of experienced craftsmen.



W 20.5" x D 20.9" x H 30.7"
SEAT W 18.1" x D 18.5" x H 17.7"

WOOD FINISHES

OAK
EUROPEAN WALNUT
AMERICAN WALNUT
ASH
CHERRY
ELM
MAPLE

WOOD COLOR

VARIOUS COLOR OPTIONS

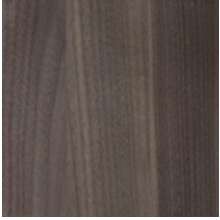
UPHOLSTERY

FABRIC
LEATHER

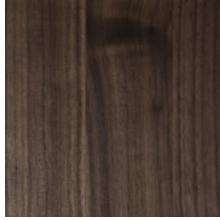




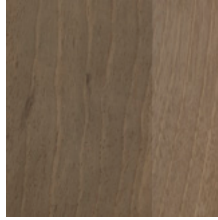
WOOD



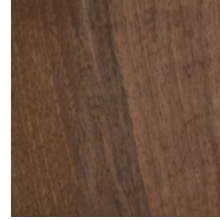
AMERICAN WALNUT
AO1 NATURAL SOAP



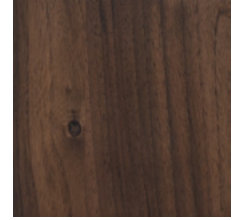
AMERICAN WALNUT
AO3 NATURAL OIL



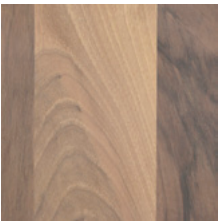
EUROPEAN WALNUT
AO1 NATURAL SOAP



EUROPEAN WALNUT
AO3 NATURAL OIL



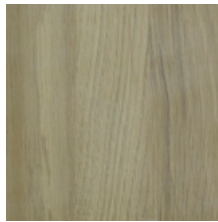
EUROPEAN WALNUT WITH KNOTS
AO3 NATURAL OIL



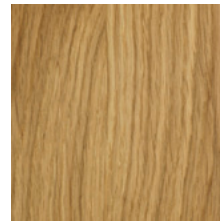
EUROPEAN WALNUT
AO4 WHITE OIL



OAK AO1 NATURAL SOAP



OAK A3 LOBA WHITE OIL



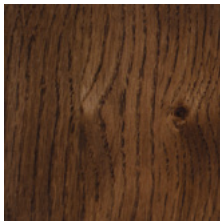
OAK AO3 NATURAL OIL



OAK AO3 NATURAL OIL WITH
KNOTS



OAK AO4 WHITE PIGMENTED OIL



OAK WENGE OIL



OAK AR1 JAHORINA PIGMENT



ASH AO4 WHITE PIGMENTED OIL



CHERRY AO1 NATURAL SOAP



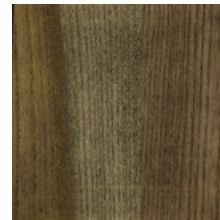
CHERRY AO3 NATURAL OIL



ELM AO1 NATURAL SOAP



ELM AO3 NATURAL OIL



ELM AR1 JAHORINA PIGMENT



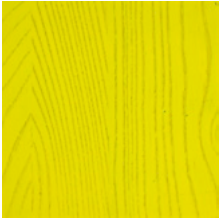
MAPLE AO1 NATURAL SOAP



MAPLE
AO4 WHITE PIGMENTED OIL

As wood is a natural product, variations in color and pigmentation will occur. Wooden furniture will also change appearance over time as it is affected by the environment in which it is placed.

COLORED WOOD



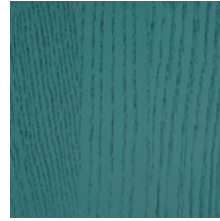
RAL 1016 (YELLOW)



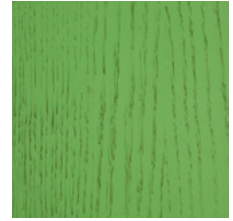
RAL 3014 (PINK)



RAL 5023 (TRUE BLUE)



RAL 5024 (BLUE)



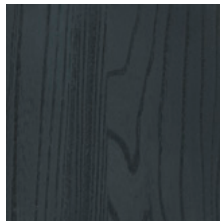
RAL 6019 (GREEN)



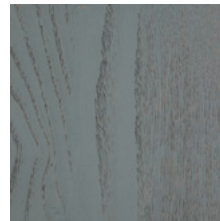
RAL 6034 (TURQUOISE)



RAL 7011 (DARK GREY)



RAL 7016 (BLACK)



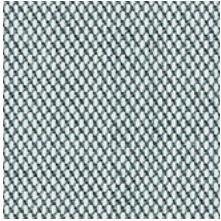
RAL 7045 (LIGHT GREY)



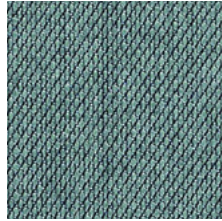
RAL 9003 (WHITE)

FABRIC SAMPLES

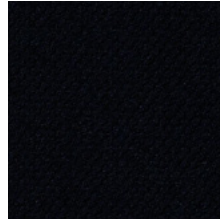
KVADRAT | STEELCUT TRIO 3



Steelcut Trio 3 | 133



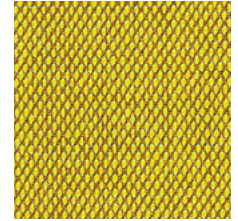
Steelcut Trio 3 | 153



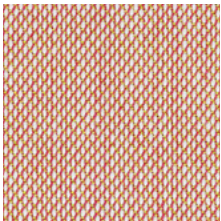
Steelcut Trio 3 | 195



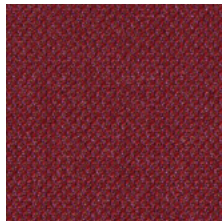
Steelcut Trio 3 | 213



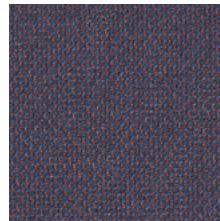
Steelcut Trio 3 | 453



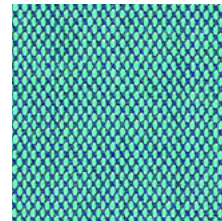
Steelcut Trio 3 | 515



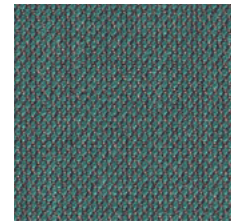
Steelcut Trio 3 | 686



Steelcut Trio 3 | 776



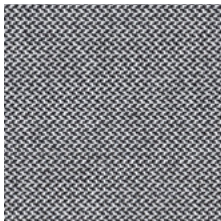
Steelcut Trio 3 | 983



Steelcut Trio 3 | 996

FABRIC SAMPLES

KVADRAT | REVIVE 1



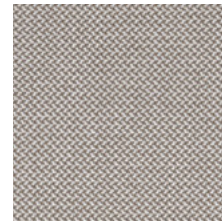
Revive 1 | 154



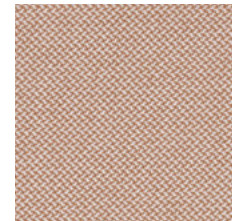
Revive 1 | 184



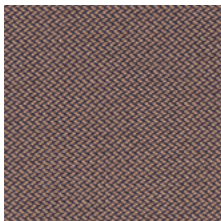
Revive 1 | 224



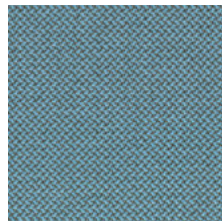
Revive 1 | 324



Revive 1 | 414



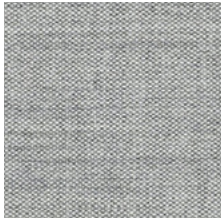
Revive 1 | 454



Revive 1 | 834

FABRIC SAMPLES

KVADRAT | REMIX 3



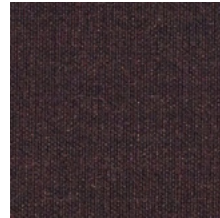
Remix 3 | 123



Remix 3 | 223



Remix 3 | 242



Remix 3 | 373



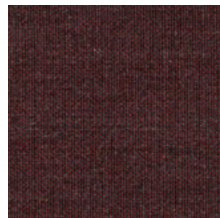
Remix 3 | 383



Remix 3 | 422



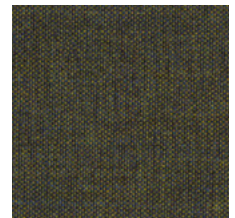
Remix 3 | 612



Remix 3 | 662



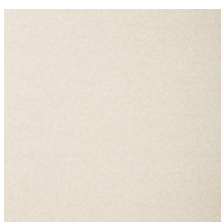
Remix 3 | 672



Remix 3 | 842

FABRIC SAMPLES

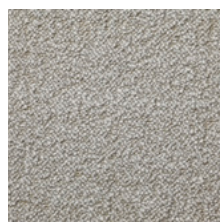
DEDAR | KARAKORUM



Karakorum 001



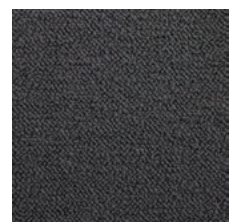
Karakorum 003



Karakorum 004



Karakorum 005



Karakorum 006



Karakorum 007



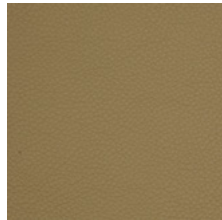
Karakorum 008

LEATHER

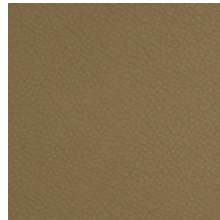
ZENITH



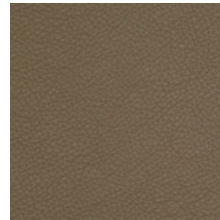
Zenith 9001



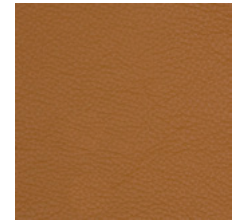
Zenith 9007



Zenith 9008



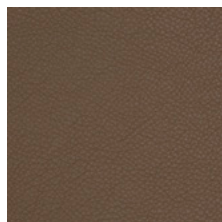
Zenith 9009



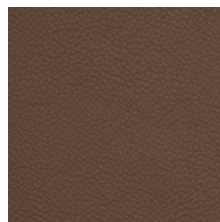
Zenith 9010



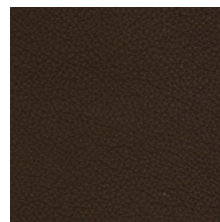
Zenith 9011



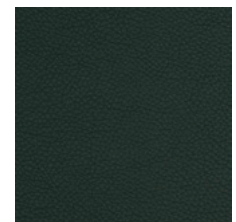
Zenith 9013



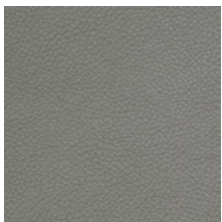
Zenith 9014



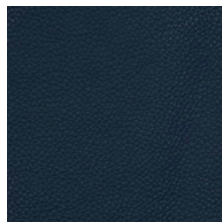
Zenith 9015



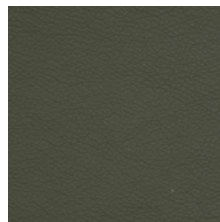
Zenith 9018



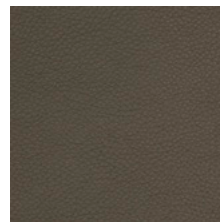
Zenith 9019



Zenith 9021



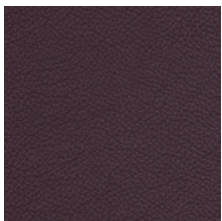
Zenith 9022



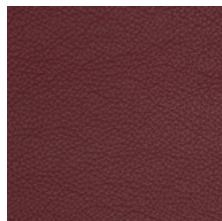
Zenith 9023



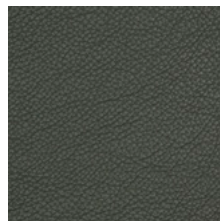
Zenith 9024



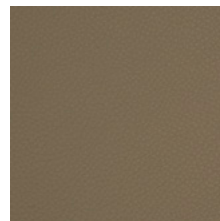
Zenith 9025



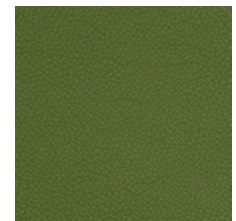
Zenith 9026



Zenith 9032



Zenith 9033



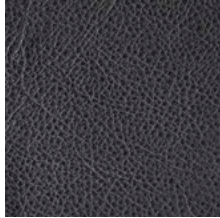
Zenith 9035

LEATHER SAMPLES

SELECT



Select 112



Select 301



Select 306



Select 307



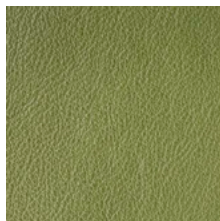
Select 350



Select 359



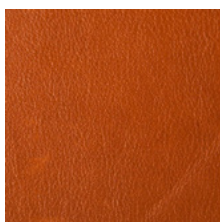
Select 377



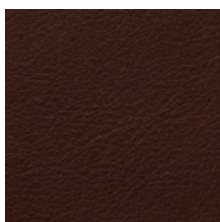
Select 620

LEATHER SAMPLES

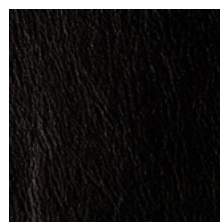
STOLZ | VEGETAL



Vegetal 95



Vegetal 96



Vegetal 98

FABRICS

collection	brand	specification	piling	martindale cycles	light fastness	care
Remix 3	Kvadrat	90% new wool worsted 10% nylon	4	100.000	6	
Revive 1	Kvadrat	100% recycled polyester FR	4/5	60.000	6/7	
Steelcut Trio 3	Kvadrat	90% new wool worsted 10% nylon	4	100.000	6/7	
Adamo/Eva	Dedar	100% cotton WR	4/5	50.000	-	
Karakorum	Dedar	42% wool, 33% viscose, 24% cotton, 1% polyamide	4/5	40.000	-	

LEATHERS

collection	brand	origin	thickness	surface
Zenith	Mastrotto	Bovine of Asian origin	0.8-1 mm	corrected and embossed
Select	Stolz	Scandinavian bullhides	1.2-1.4 mm	pigmented nappa with fine grainstructure
Vegetal	Stolz	Scandinavian bullhides	1.2-1.4 mm	aniline