

## NEVA BENCH

**M** ARTISAN  
**D** REGULAR COMPANY

The Neva product collection was greatly inspired by natural forms and the simplicity and elegance of wood in nature. Wood in essence is organic, and its forms soft. For years has wood been forced into geometrical shapes, because this was the only way to accomplish larger volumes in serial production, and organic forms have been reserved for artisanal carpenters. Modern technologies such as cnc carving have made it possible for more complex forms to be introduced into serial production, and in the spirit of the company the production of the Neva collection is an elegant dance of modern technology and artisanal handcraft, which are unavoidably overlapped. This approach makes it possible for such artistic pieces in wood to be not only reserved for the elite, but also available to the broader public.



L 63.0" x W 16.5" x H 18.5  
L 70.9" x W 16.5" x H 18.5  
L 78.7" x W 16.5" x H 18.5

### WOOD FINISHES

OAK  
EUROPEAN WALNUT  
AMERICAN WALNUT  
ASH  
CHERRY  
ELM  
MAPLE

### WOOD COLOR

VARIOUS COLOR OPTIONS

### UPHOLSTERY

FABRIC  
LEATHER

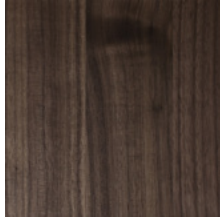




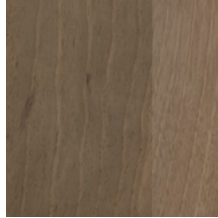
## WOOD



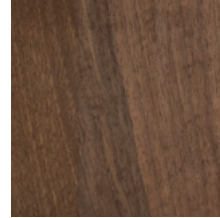
AMERICAN WALNUT  
AO1 NATURAL SOAP



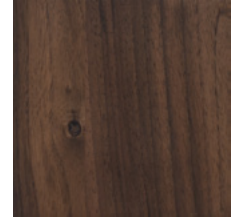
AMERICAN WALNUT  
AO3 NATURAL OIL



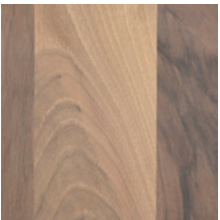
EUROPEAN WALNUT  
AO1 NATURAL SOAP



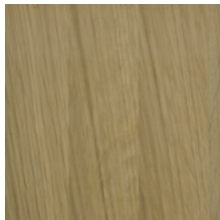
EUROPEAN WALNUT  
AO3 NATURAL OIL



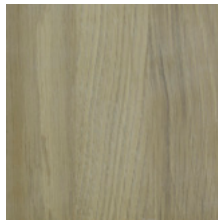
EUROPEAN WALNUT WITH KNOTS  
AO3 NATURAL OIL



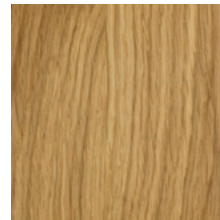
EUROPEAN WALNUT  
AO4 WHITE OIL



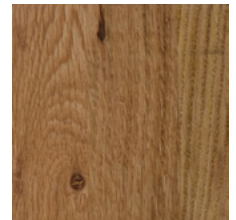
OAK AO1 NATURAL SOAP



OAK A3 LOBA WHITE OIL



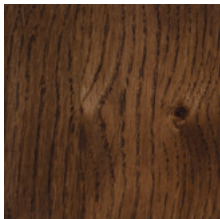
OAK AO3 NATURAL OIL



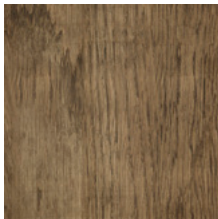
OAK AO3 NATURAL OIL WITH  
KNOTS



OAK AO4 WHITE PIGMENTED OIL



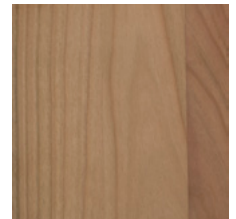
OAK WENGE OIL



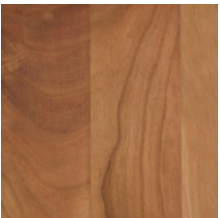
OAK AR1 JAHORINA PIGMENT



ASH AO4 WHITE PIGMENTED OIL



CHERRY AO1 NATURAL SOAP



CHERRY AO3 NATURAL OIL



ELM AO1 NATURAL SOAP



ELM AO3 NATURAL OIL



ELM AR1 JAHORINA PIGMENT



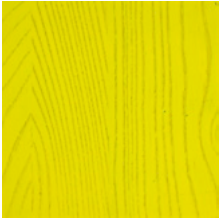
MAPLE AO1 NATURAL SOAP



MAPLE  
AO4 WHITE PIGMENTED OIL

As wood is a natural product, variations in color and pigmentation will occur. Wooden furniture will also change appearance over time as it is affected by the environment in which it is placed.

COLORED WOOD



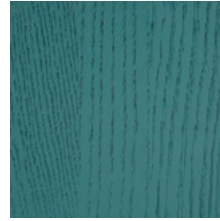
RAL 1016 (YELLOW)



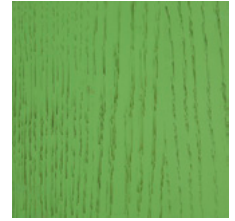
RAL 3014 (PINK)



RAL 5023 (TRUE BLUE)



RAL 5024 (BLUE)



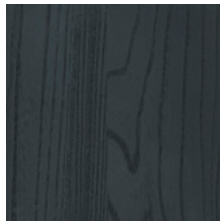
RAL 6019 (GREEN)



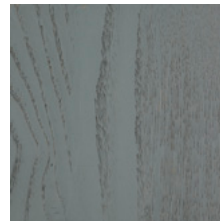
RAL 6034 (TURQUOISE)



RAL 7011 (DARK GREY)



RAL 7016 (BLACK)



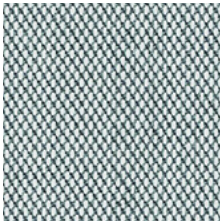
RAL 7045 (LIGHT GREY)



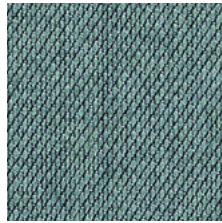
RAL 9003 (WHITE)

FABRIC SAMPLES

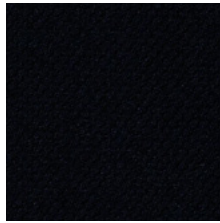
KVADRAT | STEELCUT TRIO 3



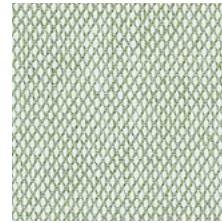
Steelcut Trio 3 | 133



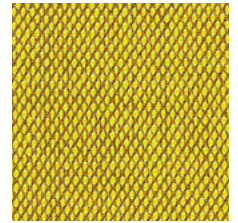
Steelcut Trio 3 | 153



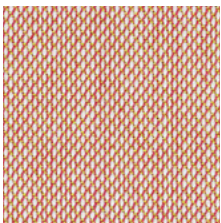
Steelcut Trio 3 | 195



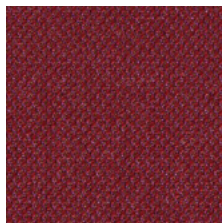
Steelcut Trio 3 | 213



Steelcut Trio 3 | 453



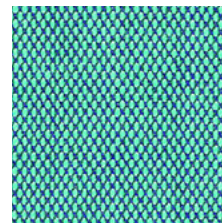
Steelcut Trio 3 | 515



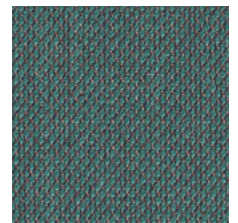
Steelcut Trio 3 | 686



Steelcut Trio 3 | 776



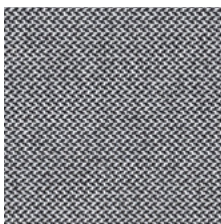
Steelcut Trio 3 | 983



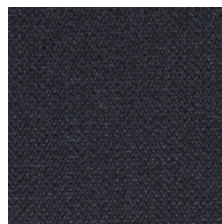
Steelcut Trio 3 | 996

FABRIC SAMPLES

KVADRAT | REVIVE 1



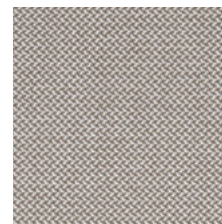
Revive 1 | 154



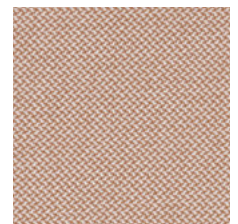
Revive 1 | 184



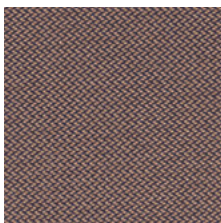
Revive 1 | 224



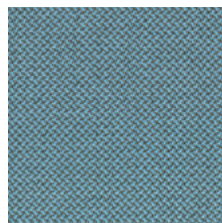
Revive 1 | 324



Revive 1 | 414



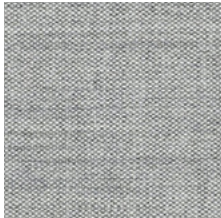
Revive 1 | 454



Revive 1 | 834

FABRIC SAMPLES

KVADRAT I REMIX 3



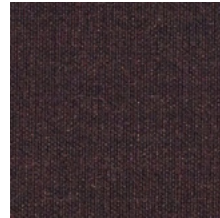
Remix 3 | 123



Remix 3 | 223



Remix 3 | 242



Remix 3 | 373



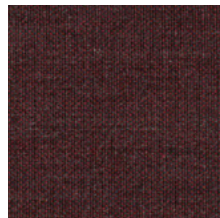
Remix 3 | 383



Remix 3 | 422



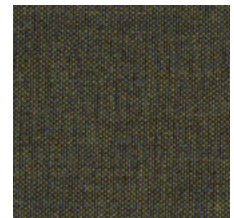
Remix 3 | 612



Remix 3 | 662



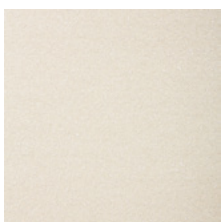
Remix 3 | 672



Remix 3 | 842

FABRIC SAMPLES

DEDAR I KARAKORUM



Karakorum 001



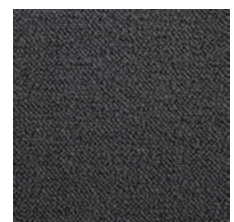
Karakorum 003



Karakorum 004



Karakorum 005



Karakorum 006



Karakorum 007



Karakorum 008

FABRIC SAMPLES

DEDAR I ADAMO & EVA



Adamo & Eva 104



Adamo & Eva 118



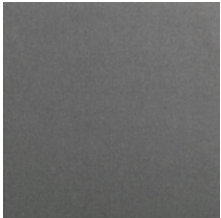
Adamo & Eva 120



Adamo & Eva 135



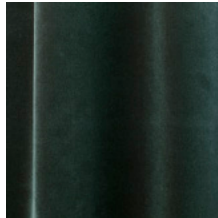
Adamo & Eva 138



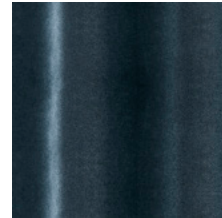
Adamo & Eva 139



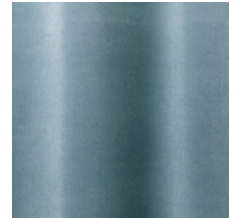
Adamo & Eva 144



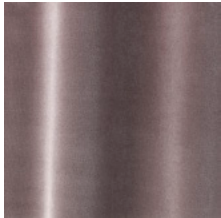
Adamo & Eva 169



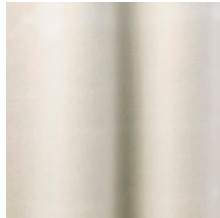
Adamo & Eva 170



Adamo & Eva 172



Adamo & Eva 176



Adamo & Eva 178

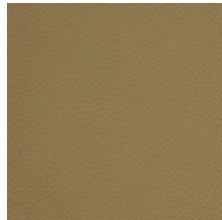


LEATHER

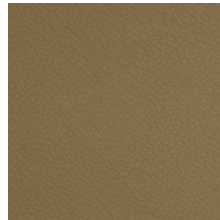
ZENITH



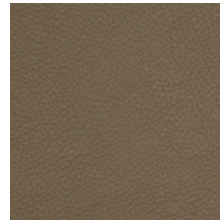
Zenith 9001



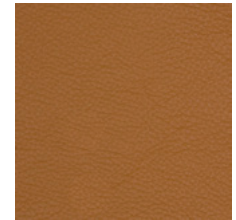
Zenith 9007



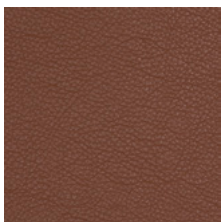
Zenith 9008



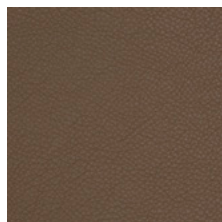
Zenith 9009



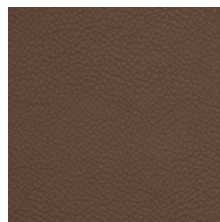
Zenith 9010



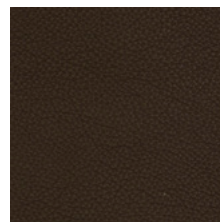
Zenith 9011



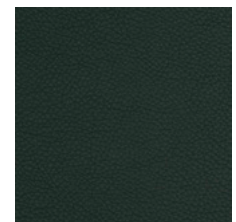
Zenith 9013



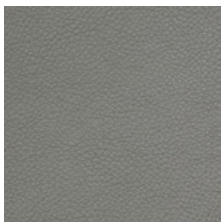
Zenith 9014



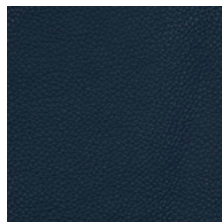
Zenith 9015



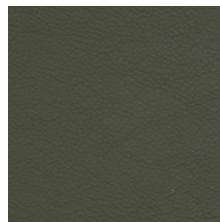
Zenith 9018



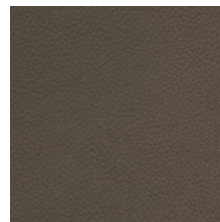
Zenith 9019



Zenith 9021



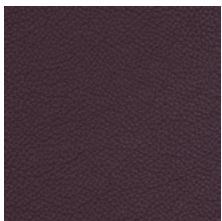
Zenith 9022



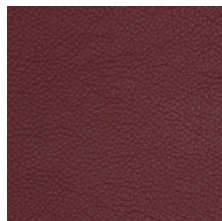
Zenith 9023



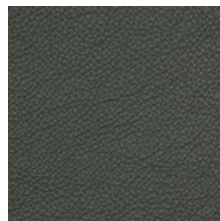
Zenith 9024



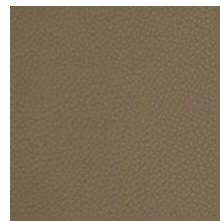
Zenith 9025



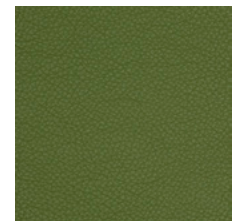
Zenith 9026



Zenith 9032



Zenith 9033



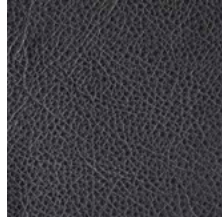
Zenith 9035

LEATHER SAMPLES

SELECT



Select 112



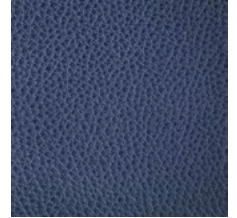
Select 301



Select 306



Select 307



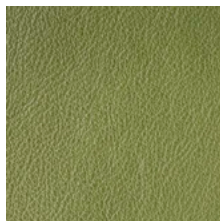
Select 350



Select 359



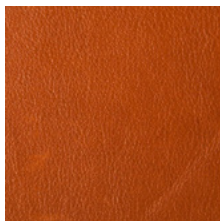
Select 377



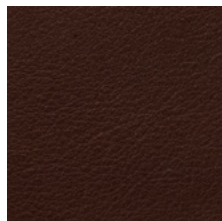
Select 620

LEATHER SAMPLES

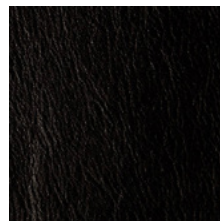
STOLZ | VEGETAL



Vegetal 95



Vegetal 96



Vegetal 98

## FABRICS

collection	brand	specification	piling	martindale cycles	light fastness	care
Remix 3	Kvadrat	90% new wool worsted 10% nylon	4	100.000	6	
Revive 1	Kvadrat	100% recycled polyester FR	4/5	60.000	6/7	
Steelcut Trio 3	Kvadrat	90% new wool worsted 10% nylon	4	100.000	6/7	
Adamo/Eva	Dedar	100% cotton WR	4/5	50.000	-	
Karakorum	Dedar	42% wool, 33% viscose, 24% cotton, 1% polyamide	4/5	40.000	-	

## LEATHERS

collection	brand	origin	thickness	surface
Zenith	Mastrotto	Bovine of Asian origin	0.8-1 mm	corrected and embossed
Select	Stolz	Scandinavian bullhides	1.2-1.4 mm	pigmented nappa with fine grainstructure
Vegetal	Stolz	Scandinavian bullhides	1.2-1.4 mm	aniline