

ARES: le classique radiateur sèche-serviette de Irsap.



Ares, hauteur 1720 mm, largeur 530 mm, Standard Blanc

Caractéristiques de construction

radiateur en acier avec tubes ronds Ø 23 mm et collecteurs D 40 x 30 mm

raccordement hydraulique 1/2" standard ou central 50mm

NF

pression maximale de service 8 bars

température maximale de service 95°C

garantie 2 ans

Inclus avec le radiateur

système de fixation murale: 3 infratubes blanc pour Ares Blanc, 3 infratubes chrome pour Ares couleur
purgeur 1/2"

Normes et certifications



Plus



Données techniques

Modèle	Profondeur (mm)	Hauteur (mm)	Largeur (mm)	Entraxe (mm)	Poids (kg)	Capacity (lt)	$\Delta t=50^{\circ}\text{C}$ (Watt)	$\Delta t=40^{\circ}\text{C}$ (Watt)	$\Delta t=30^{\circ}\text{C}$ (Watt)	$\Delta t=20^{\circ}\text{C}$ (Watt)	Exponent
818 15 tubes 2 espaces	30,0	818	430	400	4,50	3,40	324,0	248,0	175,0	107,0	1,207
818 15 tubes 2 espaces	30,0	818	530	500	5,30	4,00	384,0	293,0	207,0	127,0	1,206
818 15 tubes 2 espaces	30,0	818	580	550	5,70	4,20	414,0	316,0	223,0	137,0	1,206
1118 22 tubi 2 intervalli	30,0	1118	430	400	6,40	4,90	456,0	346,0	243,0	147,0	1,233
1118 22 tubi 2 intervalli	30,0	1118	530	500	7,50	5,60	547,0	416,0	293,0	178,0	1,224
1118 22 tubi 2 intervalli	30,0	1118	580	550	8,10	6,00	593,0	452,0	318,0	194,0	1,220
1462 28 tubi 3 intervalli	30,0	1462	430	400	8,30	6,20	592,0	450,0	316,0	192,0	1,227
1462 28 tubi 3 intervalli	30,0	1462	530	500	9,60	7,20	710,0	540,0	380,0	231,0	1,225
1462 28 tubi 3 intervalli	30,0	1462	580	550	10,30	7,70	769,0	585,0	411,0	250,0	1,224
1720 34 tubi 3 intervalli	30,0	1720	430	400	9,90	7,50	712,0	541,0	380,0	231,0	1,227
1720 34 tubi 3 intervalli	30,0	1720	530	500	11,60	8,70	853,0	649,0	457,0	278,0	1,223
1720 34 tubi 3 intervalli	30,0	1720	580	550	12,40	9,30	923,0	703,0	495,0	302,0	1,220
1720 34 tubi 3 intervalli	30,0	1720	730	700	19,40	10,50	1.135,0	866,0	610,0	373,0	1,214

Les rendements élevés des corps de chauffe IRSAP répondent parfaitement aux installations basse température idéalement conçus à Δt 30°C.

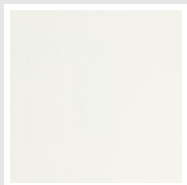
Pour des Δt différents utiliser la formule: $Q=Q_n (\Delta t / 50)^n$

Inclus avec le radiateur

- système de fixation murale: 3 infratubes blanc pour Ares Blanc, 3 infratubes chrome pour Ares couleur • purgeur 1/2"

Couleurs et Finitions

STANDARD

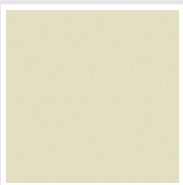


Standard Blanc
Cod. 01

CLASSIC



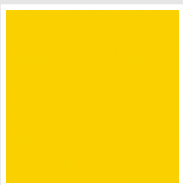
Blanc Edelweiss
Cod. 34



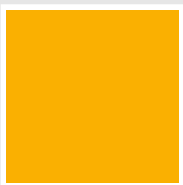
Ivoire - RAL 1013
Cod. 02



Beige Cream
Cod. 26



Jaune - RAL 1021
Cod. 04



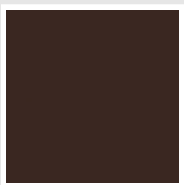
Jaune Melon - RAL 1028
Cod. E7



Orange - RAL 2004
Cod. 17



Marron Rouille - RAL 8004
Cod. E1



Marron - RAL 8017
Cod. 09



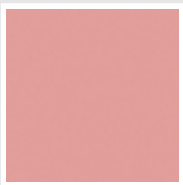
Amarante - RAL 3003
Cod. 06



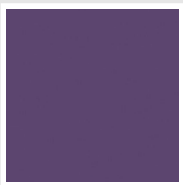
Rouge - RAL 3000
Cod. 05



Rouge Fraise - RAL 3018
Cod. Y3



Rose - RAL 3015
Cod. R2



Bleu Lilas - RAL 4005
Cod. R3



Trafic Purple - RAL 4006
Cod. R6



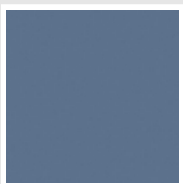
Vert Forêt - RAL 6005
Cod. 19



Vert Pelouse - RAL 6018
Cod. N3



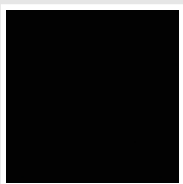
Vert Cendre - RAL 6021
Cod. E6



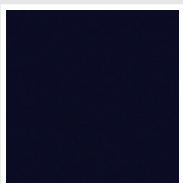
Bleu Pastel - RAL 5024
Cod. G7



Gris Manhattan
Cod. 03

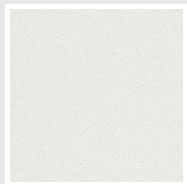


Noir - RAL 9005
Cod. 10

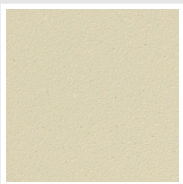


Deep Blue
Cod. 2F

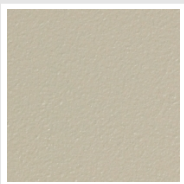
SPECIAL



Blanc Perle
Cod. 16



Quartz 1
Cod. 1C



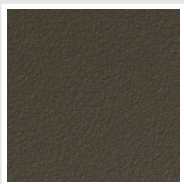
Sablé
Cod. Y4



Quartz 2
Cod. 2C



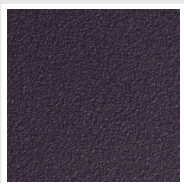
Sunstone
Cod. 2D



Brun Tabac
Cod. 1B



Flame Red
Cod. 7D



Purple Blue
Cod. 1D



Azurite 3
Cod. 6C

Gris Moyen
Cod. 4D

Gris Titanium
Métalisé - RAL 9023
Cod. L3

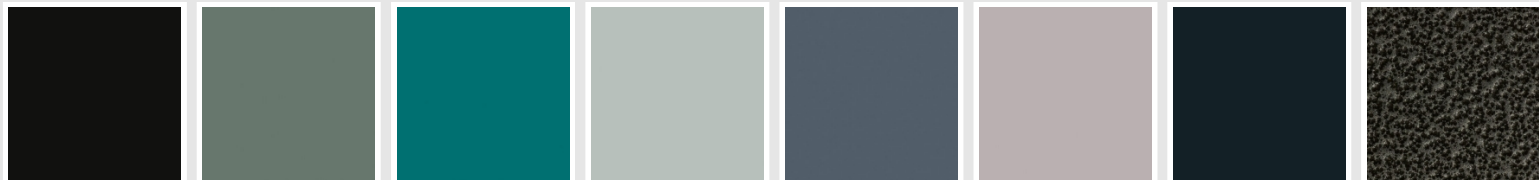
Gris Perle
Cod. L6

Noir Graphite
Cod. 18

Gris Quartz
Cod. 31

Noir Satiné
Cod. 30

Blanc Opaque
Cod. J8



Noir Opaque
Cod. K1

Agave
Cod. 9N

North Sea Blue
Cod. 1P

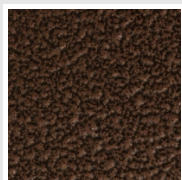
Ice
Cod. 3P

Matt Blue Dove -
RAL 5014
Cod. 4P

Matt Light Grey
Cod. 8N

Ash Grey - Ral 7021
Cod. G1

Gris Martellé
Cod. 32



Cuivre Martellé
Cod. J4

RAL



RAL hors catalogue (sous réserve de faisabilité)
Cod. ALTRIRAL

The Colors used in this folder are not considered binding. The different technological painting processes and the materials used for the realization can not have a perfect color match with the delivered product. Irsap company reserves the right to introduce at any time whatever modifications necessary to the improvement of the product.