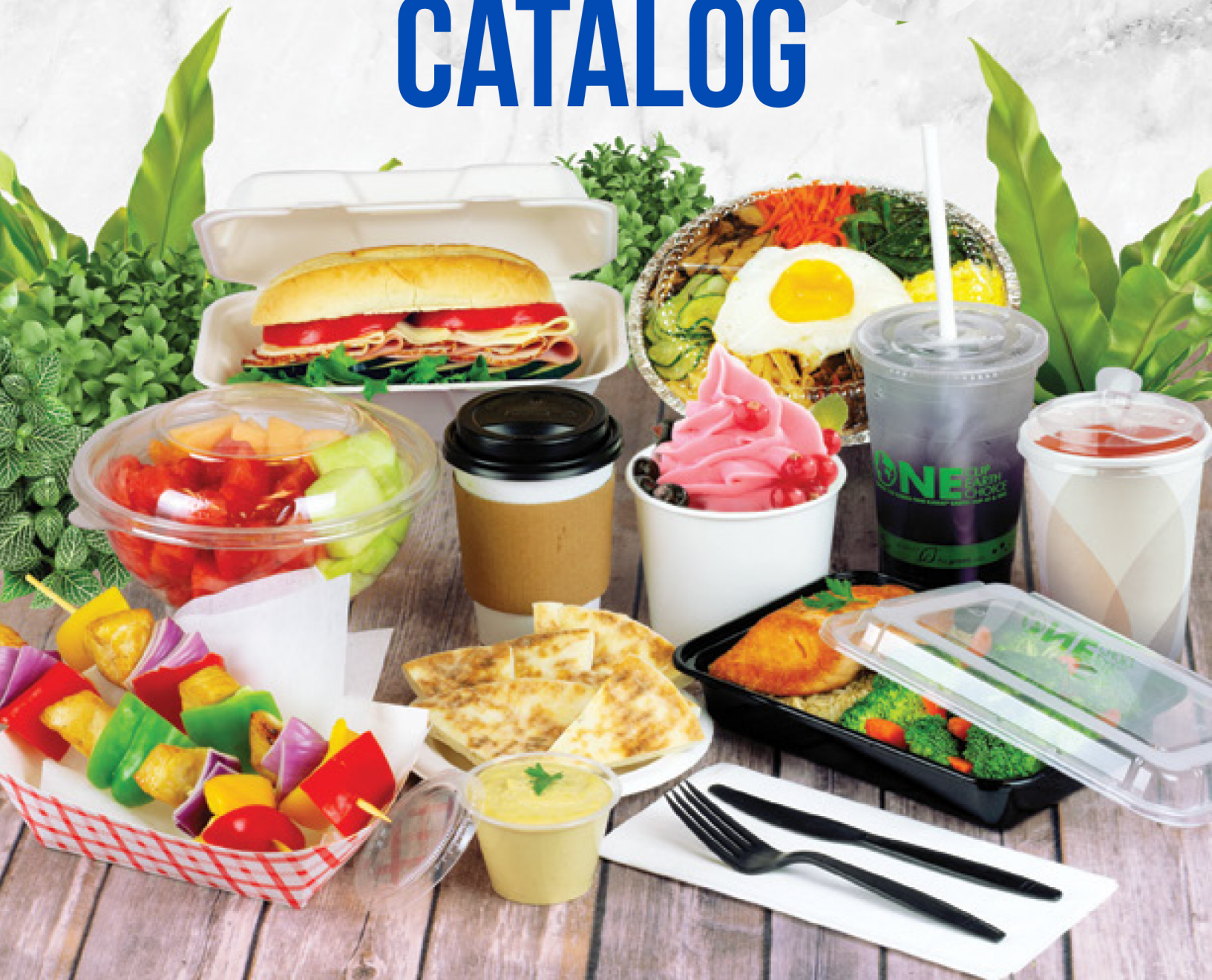




# PRODUCT CATALOG



# A Quick Reference

Please refer to the icon chart below to aid in your browsing.

## Material Resin ID Codes



IDEAL FOR  
COLD FOODS  
/DRINKS



IDEAL FOR  
HOT DRINKS



IDEAL FOR  
HOT FOODS



MICROWAVE  
SAFE



DO NOT  
MICROWAVE



CUSTOM  
PRINTING  
AVAILABLE

## Certifications



**BPI**  
BPI CERTIFIED  
COMPOSTABLE  
PRODUCT



CEDAR GROVE  
ACCEPTED  
PRODUCT



COMPOST  
MANUFACTURING  
ALLIANCE APPROVED  
PRODUCT



SUSTAINABLE  
FORESTRY INITIATIVE  
CERTIFIED PRODUCT

## Hazard Symbols



SKIN  
IRRITATION



CORROSIVE  
TO METALS



# WE PROUDLY REPRESENT

**Karat**<sup>®</sup>

**Karat**<sup>®</sup>  
earth

**SOLO**<sup>®</sup>



[www.prodeldistribution.com](http://www.prodeldistribution.com)



# Contents

## Karat®

Karat® offers a wide selection of high-quality and cost effective disposable food and beverage products. Karat completes all of your operational needs with cups, food containers, utensils, and more. We deliver a dependable and reliable selection of supplies to maintain your operations. Karat offers one of the industry's fastest turnaround times for custom-printed disposable goods.

## Karat earth®

Karat Earth® eco-friendly products are a great step toward protecting the environment. Karat Earth offers cups, food containers, utensils, and more, all of which are made from renewable resources. Select Karat Earth products are BPI certified compostable in industrial facilities. Stock printed products are available to help promote your eco-friendly efforts as well as plain products which are perfect for custom printing.

## CUSTOM PRINTING

Take your company's brand recognition efforts to the next level. Bring out your company's individuality, character, and style by customizing your disposables. Effectively promote your brand image with our fast turnaround times, low minimums, and high-quality printing. Every cup, container, or cup jacket has the potential to be an eye-catching advertisement for your company, so don't wait!

## TOTAL CLEAN™

Keep your business or restaurant clean and sanitized with Total Clean™. This product line offers various cleaning products that will remove your toughest stains. Products include degreaser, window cleaner, and more.

## TEA ZONE®

Get creative in the kitchen with high-quality drink and dessert ingredients by Tea Zone®. Discover our unique flavored syrups, drink powders, and tea leaves. Top off your desserts or add some fun to your drinks with delicious add-ons. Whether you are a tea shop, café, restaurant, bakery, or yogurt shop, our large selection will allow you to craft endless combinations of unique drinks and desserts.

# Karat<sup>®</sup>

Premium Disposable Paper & Plastic Food Service Products

PolyPro/PP Cold Cups & Lids

PET Cold Cups & Lids

Paper Cold Cups & Lids

Paper Hot Cups & Lids Stirrers

& Straws

Cup Accessories

Portion Cups & Lids

PP Deli Containers & Lids PP

Injection Molded Series

Plastic Hinged Containers

PET Salad Bowls & Lids

Paper Food Buckets & Lids Paper

Food Trays

Paper Food Containers & Lids

Fold-To-Go Containers

Food Pails

Aluminum Products

Take-out Bags

Deli Wrap/Paper Liner Sheets

Catering Supplies

Napkins

Utensils

Janitorial Supplies

Gloves

General Supplies

Warehouse Supplies



\*SELECT ITEMS MANUFACTURED DOMESTICALLY

# POLYPRO/PP COLD CUPS & LIDS

Karat® polypro/PP (polypropylene) cold cups and lids are some of the most popular products used in the beverage industry. Translucent in color, Karat polypro/PP plastics are not only light-weight, but are also durable, shatterproof, and recyclable. Select from a variety of cups, lids, and seals in various sizes and styles.

## ✓ key features

- Durable and shatterproof
- Recyclable, BPA free
- Cup sizes 12 oz. - 24 oz. share one size lid (flat or dome)
- Low minimum, fast turnaround custom print available
- Select items made in the USA



## Polypro Cold Cup



SIZE	RIM DIA. (mm)	CASE QTY	ITEM NO.
32 oz	104.5	600/case	C-KPP32U

## PP Cups



### U-RIM Y-Series

SIZE	CC	RIM DIA. (mm)	CASE QTY	ITEM NO.
8.5 oz	250	95	2000/case	C1053 (Karat)

## PS Cold Cup



SIZE	RIM DIA. (mm)	CASE QTY	ITEM NO.
9 oz	78	2500/case	C-KPS9



### U-RIM Smooth

SIZE	CC	RIM DIA. (mm)	CASE QTY	ITEM NO.
12 oz	360	95	2000/case	C1010 (Karat)
16 oz	500	95	2000/case	C1011 (Karat)
24 oz	700	95	1000/case	C1012 (Karat)

## PP Water Cup (Ribbed)



SIZE	CC	RIM DIA. (mm)	CASE QTY	ITEM NO.
12 oz	360	90	1000/case	C1080 (Karat)



### AO/Flat Rimmed Ribbed

SIZE	CC	RIM DIA. (mm)	CASE QTY	ITEM NO.
16 oz	500	95	2000/case	C1021 (Karat)
24 oz	700	95	1000/case	C1022 (Karat)



### AO/Flat Rimmed Extra Wide

SIZE	CC	RIM DIA. (mm)	CASE QTY	ITEM NO.
25 oz	740	120	500/case	C1025
30 oz	900	120	500/case	C1033

## PET Flat Lids for Polypro Cold Cups



DIA. (mm)	FITS (oz)	CASE QTY	ITEM NO.
98	12 - 24	1000/case	C-KC626TS
98	12 - 24	1000/case	C-KC626TS-NH*
104.5	32	600/case	C-KCL1045

\* NO hole for straw

## Flat Lids for PP U-RIM Cups



DIA. (mm)	MATERIAL	FITS (style)	CASE QTY	ITEM NO.
95	PS	250cc-700cc	2000/case	C3000
120	PP	740cc-900cc	1000/case	C3002

PLEASE NOTE: Lids are not intended for primary use. Seals are recommended for closure/lid, see page 14.

## PET Dome Lids for Polypro Cold Cups



DIA. (mm)	FITS (oz)	CASE QTY	ITEM NO.
98	12 - 24	1000/case	C-KDL626
98	12 - 24	1000/case	C-KDL626-WH**
98	12 - 24	1000/case	C-KDL626-NH*
104.5	32	600/case	C-KDL1045

\* NO hole for straw

\*\* Extra wide opening

## OPS Dome Lid for PP U-RIM Cups



DIA. (mm)	FITS (style)	CASE QTY	ITEM NO.
95	250cc-700cc	2000/case	C1041

PLEASE NOTE: Lids are not intended for primary use. Seals are recommended for closure/lid, see page 14.

# PET COLD CUPS & LIDS

Karat® PET cups and lids are perfect for showcasing your unique creations. Karat PET plastic (polyethylene terephthalate), a thermoplastic resin in the polyester family, offers a higher degree of sterilization, durability, and clarity compared to alternative materials. Choose from our line of Karat PET cups and lids that we proudly manufacture in the USA.

## ✓ key features

- Durable, high clarity, and crack-resistant
- Recyclable and BPA free
- Cup sizes 12 oz. - 24 oz. share one size lid (flat or dome)
- Full range of lid options including an innovative PET seal\*
- Low minimum, fast turnaround custom print available
- Select sizes made in the USA



## PET Cups



SIZE	RIM DIA. (mm)	CASE QTY	ITEM NO.
3 oz	62	2500/case	G-KC3
7 oz	74	1000/case	G-KC7
8 oz	78	1000/case	G-KC8
9 oz	92	1000/case	G-KC9
10 oz	78	1000/case	G-KC10
12 oz	92	1000/case	G-KC12S
12 oz	98	1000/case	G-KC12U
16 oz	98	1000/case	G-KC16U
20 oz	98	1000/case	G-KC20U
24 oz	98	600/case	G-KC24U
32 oz	107	300/case	G-KC32U

## PET Dessert Cups



SIZE	RIM DIA. (mm)	CASE QTY	ITEM NO.
5 oz	92	1000/case	G-KD5
8 oz	92	1000/case	G-KD8
12 oz	98	1000/case	G-KD12

## PET Parfait Insert



SIZE	RIM DIA. (mm)	CASE QTY	ITEM NO.
4 oz	98	1000/case	G-PI4U

\*See page 14 for sealing film

## PET Lids



### Flat Lids

DIA. (mm)	CUPS (oz)	DESSERT (oz)	CASE QTY	ITEM NO.
78	8, 10	-	1000/case	G-KC78TS
78	8, 10	-	1000/case	G-KC78TS-NH*
92	9, 12	5, 8	1000/case	G-H662TS-A
92	9, 12	5, 8	1000/case	G-H662TS-A-NH*
98	12 - 24	12	1000/case	G-KC626TS
98	12 - 24	12	1000/case	G-KC626TS-NH*
107	32	-	500/case	G-KC107TS

\*NO hole for straw

### Dome Lids

DIA. (mm)	CUPS (oz)	DESSERT (oz)	CASE QTY	ITEM NO.
78	8, 10	-	1000/case	G-KDL78
78	8, 10	-	1000/case	G-KDL78-NH*
92	9, 12	5, 8	1000/case	G-HDL662-A
92	9, 12	5, 8	1000/case	G-HDL662-A-NH*
98	12 - 24	12	1000/case	G-KDL626
98	12 - 24	12	1000/case	G-KDL626-WH**
98	12 - 24	12	1000/case	G-KDL626-NH*
107	32	-	500/case	G-KDL107

\* NO hole for straw

\*\* Extra wide opening

### Dome Lid - Half Moon Flip

DIA. (mm)	CUPS (oz)	DESSERT (oz)	CASE QTY	ITEM NO.
98	12 - 24	-	1000/case	G-KDL626-HH

### Strawless™ Sipper Lid

CUPS (oz)	CASE QTY	ITEM NO.
12 - 24	1000/case	G-KC626TS-SH



# PAPER COLD CUPS & LIDS

Karat® paper cold cups and lids are essential in any foodservice operation. They are protected with a double-poly lining both inside and out. These durable cups have rolled rims and a smooth exterior finish. Choose from plain or stock printed cups and start serving ice-cold fountain drinks, smoothies, milkshakes, and more.

## ✓ key features

- Double-poly coating inside and out to resist condensation
- Multiple stock print designs are available
- Custom print options available for personalized branding



## Paper Cold Cups - White



SIZE	RIM DIA. (mm)	CASE QTY	ITEM NO.
9 oz	75	1000/case	G-KCP9W
12 oz	90	1000/case	G-KCP12W
16 oz	90	1000/case	G-KCP16W
22 oz	90	1000/case	G-KCP22WU
32 oz	104.5	600/case	G-KCP32WU

## Paper Cold Cups - Stock Print "KOLD"



SIZE	RIM DIA. (mm)	CASE QTY	ITEM NO.
16 oz	90	1000/case	G-KCP16
22 oz	90	1000/case	G-KCP22
32 oz	104.5	600/case	G-KCP32

## PET Lids for Paper Cold Cups



### Flat Lids

DIA. (mm)	FITS (oz)	CASE QTY	ITEM NO.
90	12 - 22	1000/case	G-KCL90U
104.5	32	600/case	G-KCL1045
115	44	1000/case	G-KCL115



### Dome Lid

DIA. (mm)	FITS (oz)	CASE QTY	ITEM NO.
90	12 - 22	1000/case	G-KCDL90-NH*
104.5	32	600/case	G-KDL1045

\* NO hole for straw



### Strawless™ Sipper Lids

FITS (oz)	CASE QTY	ITEM NO.
12 - 22	1000/case	G-KCL90-SH
32	600/case	G-KCL1045-SH*

\*Also fits 32oz PolyPro Cold Cup

## PS Lid for Paper Cold Cups



### Flat Lid

DIA. (mm)	FITS (oz)	CASE QTY	ITEM NO.
84	12	1000/case	G-KCL84-PS



# PAPER HOT CUPS & LIDS

Karat® paper hot cups and lids are perfect for morning coffee or evening tea with their durable poly-lined interior and comfortable grip on the outside. Karat ripple hot cups and insulated hot cups are also available. Ripple and insulated cups are double-walled and do not require cup jackets or sleeves. Choose from plain or stock printed Karat paper hot cups in various sizes for all your hot beverage needs.

## ✓ key features

- Made of high-quality paper
- Recyclable material
- Multiple lid colors and designs available
- No cup sleeve needed for insulated and ripple cups
- Custom printing available for all hot cups, including insulated and ripple cups
- 12 oz., 16 oz. and 20 oz. White Paper Hot Cups are SFI certified



## Paper Hot Cups - White



SIZE	RIM DIA. (mm)	CASE QTY	ITEM NO.
4 oz	62	1000/case	G-K504W
6 oz	70	1000/case	G-K506W
8 oz	80	1000/case	G-K508W
10 oz	90	1000/case	G-K510W
12 oz	90	1000/case	G-K512WU
16 oz	90	1000/case	G-K516WU
20 oz	90	600/case	G-K520WU
24 oz	90	500/case	G-K524W

## Paper Hot Cups - "Coffee" Stock Print



SIZE	RIM DIA. (mm)	CASE QTY	ITEM NO.
8 oz	80	1000/case	G-K508
10 oz	90	1000/case	G-K510
12 oz	90	1000/case	G-K512
16 oz	90	1000/case	G-K516
20 oz	90	600/case	G-K520
24 oz	90	500/case	G-K524

## Paper Hot Cups - "Atlas" Stock Print



SIZE	RIM DIA. (mm)	CASE QTY	ITEM NO.
10 oz	90	1000/case	G-K510 (Atlas)
12 oz	90	1000/case	G-K512 (Atlas)
16 oz	90	1000/case	G-K516 (Atlas)
20 oz	90	600/case	G-K520 (Atlas)

## Paper Hot Cups - "Holiday" Stock Print



SIZE	RIM DIA. (mm)	CASE QTY	ITEM NO.
16 oz	90	1000/case	G-K516 (Holiday)

## Ripple Paper Hot Cups



### Kraft

SIZE	RIM DIA. (mm)	CASE QTY	ITEM NO.
4 oz	62	1000/case	G-KRC504
8 oz	80	500/case	G-KRC508
10 oz	90	500/case	G-KRC510
12 oz	90	500/case	G-KRC512
16 oz	90	500/case	G-KRC516
20 oz	90	500/case	G-KRC520

### Black



SIZE	RIM DIA. (mm)	CASE QTY	ITEM NO.
8 oz	80	500/case	G-KRC508B
12 oz	90	500/case	G-KRC512B
16 oz	90	500/case	G-KRC516B
20 oz	90	500/case	G-KRC520B

## Insulated Paper Hot Cups



SIZE	RIM DIA. (mm)	CASE QTY	ITEM NO.
8 oz	80	500/case	G-KIC508W
12 oz	90	500/case	G-KIC512W
16 oz	90	500/case	G-KIC516W
20 oz	90	300/case	G-KIC520W

## Insulated Paper Hot Cups - Wrapped



SIZE	RIM DIA. (mm)	CASE QTY	COLOR	ITEM NO.
10 oz	90	500/case	White	G-WIC510W
10 oz	90	500/case	Kraft	G-WIC510K

## Sipper Dome Lids for Paper Hot Cups



### Black

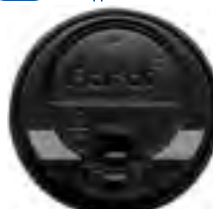
DIA. (mm)	FITS (oz)	CASE QTY	ITEM NO.
70	6	1000/case	G-KDL506B
80	8	1000/case	G-KDL508B
90	10 - 24	1000/case	G-KDL516B-PP



### White

DIA. (mm)	FITS (oz)	CASE QTY	ITEM NO.
80	8	1000/case	G-KDL508
90	10 - 24	1000/case	G-KDL516W-PP

## Enclosure Lids for Paper Hot Cups



### Black

DIA. (mm)	FITS (oz)	CASE QTY	ITEM NO.
90	10 - 24	1000/case	G-KDL516B-E



### White

DIA. (mm)	FITS (oz)	CASE QTY	ITEM NO.
90	10 - 24	1000/case	G-KDL516-E



### Brown

DIA. (mm)	FITS (oz)	CASE QTY	ITEM NO.
90	10 - 24	1000/case	G-KDL516BRN-E



### Green

DIA. (mm)	FITS (oz)	CASE QTY	ITEM NO.
90	10 - 24	1000/case	G-KDL516GRE-E



### Pink

DIA. (mm)	FITS (oz)	CASE QTY	ITEM NO.
90	10 - 24	1000/case	G-KDL516PNK-E

# STIRRERS & STRAWS

Stirrers and straws are essential for the complete service package for your beverages. Made with durable plastic or wood, Karat® stirrers and straws are available in different lengths and diameters as well as wrapped or unwrapped. Karat offers colossal straws, jumbo straws, giant straws, and more. Browse through Karat stirrers and straws for fun and colorful choices that are sure to meet any beverage needs.



## ✓ key features

- Multiple lengths, sizes, and colors available
- Paper/poly wrapped or unwrapped options
- Diagonally cut straws available for puncturing sealing film
- Custom print option available for straw wrappers
- Custom straw length, color, and pack size are also available for order

### ACTUAL SIZE REFERENCE CHART:



STIRRER  
3mm



JUMBO  
5 - 6.5mm



GIANT  
7 - 8mm



COLOSSAL  
≥10mm



## Wooden Stir Sticks - Coffee supplies



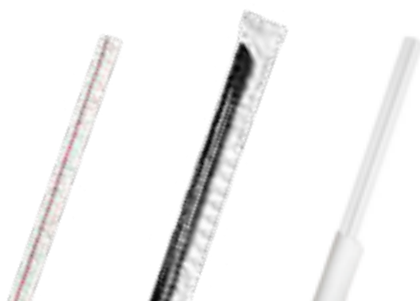
LENGTH (in)	CASE QTY	ITEM NO.
5.5"	500/box, 10 box/case	G-10018s
7.5"	500/box, 10 box/case	G-10019



## Stir Straws - Ideal for cocktails, coffee



LENGTH (in)	SOLID	COLOR(S)	CASE QTY	ITEM NO.
5.25"	Yes	Black	10000/case	C9101(Black)
5.25"	Yes	Red	10000/case	C9101(Red)
7.5"	Yes	Black	5000/case	C9100(Black)
7.5"	Yes	Red	5000/case	C9100(Red)



## Jumbo Straws - Ideal for fountain drinks, juices, teas, etc



LENGTH (in)	WRAPPER	SOLID	STRIPED	COLOR(S)	CASE QTY	ITEM NO.
7.5"	-	No	Yes	Mixed	8000/case	C9005*
7.5"	Poly	No	Yes	Mixed	8000/case	C9006*
7.75"	-	No	No	Clear	12000/case	C9550
7.75"	-	Yes	No	Black	12000/case	C9550 (Black)
7.75"	Paper	No	No	Clear	12000/case	C9090
7.75"	Paper	Yes	No	Black	12000/case	C9090 (Black)
7.75"	Paper	No	No	Clear	2000/case	C9093
8.75"	Paper	No	No	Clear	2000/case	C9094
9"	-	Yes	No	Black	2000/case	C9031s*
9"	-	No	Yes	Mixed	8000/case	C9051*
9"	Poly	Yes	No	Black	2000/case	C9035*
10.25"	Paper	No	No	Clear	2000/case	C9095



## Artistic/Flexible Straws - Jumbo straws with a twist



LENGTH (in)	WRAPPER	SOLID	STRIPED	COLOR(S)	CASE QTY	ITEM NO.
7.5"~13.5"	-	Yes	No	Mixed	4000/case	C9021
7.75"	Paper	No	No	Clear	10000/case	C9091



## Spoon Straws - Jumbo straws for slushies, smoothies, etc



LENGTH (in)	WRAPPER	SOLID	STRIPED	COLOR(S)	CASE QTY	ITEM NO.
9.45"	-	Yes	No	Red	10000/case	C9085
9.45"	OPP	Yes	No	Red	5000/case	C9086



## Giant Straws - Ideal for smoothies, milkshakes, slushes, etc

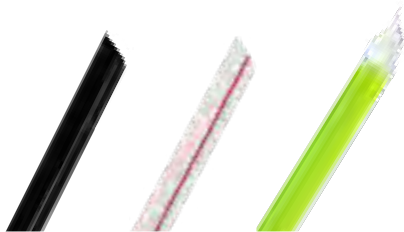


LENGTH (in)	WRAPPER	SOLID	STRIPED	COLOR(S)	CASE QTY	ITEM NO.
7.75"	Paper	No	No	Clear	7500/case	C9130
7.75"	Paper	No	Yes	Red/White	7500/case	C9130 (Red)
7.75"	Poly	Yes	No	Purple	5000/case	C9072*
9"	Paper	Yes	No	Blue	1200/case	C9120 (Blue)
9"	Paper	Yes	No	Aqua	2500/case	C9075 (Aqua)
9"	Paper	Yes	No	Black	2500/case	C9075 (Black)
9"	Paper	Yes	No	Green	2500/case	C9075 (Green)
9"	Paper	Yes	No	Orange	2500/case	C9075 (Orange)
9"	Paper	Yes	No	Pink	2500/case	C9075 (Pink)
9"	Paper	Yes	No	Red	2500/case	C9075 (Red)
9"	Paper	Yes	No	Yellow	2500/case	C9075 (Yellow)
9"	Poly	Yes	No	Red	2500/case	C9076 (Red)*
9"	Poly	Yes	No	Black	2500/case	C9076 (Black)*
10.25"	Paper	No	No	Clear	1200/case	C9125
10.25"	Paper	Yes	No	Black	1200/case	C9125 (Black)
10.25"	Paper	Yes	No	Red	1200/case	C9125 (Red)

## Colossal Straws - Ideal for drinks with add-ons (boba & jelly)



LENGTH (in)	WRAPPER	SOLID	STRIPED	COLOR(S)	CASE QTY	ITEM NO.
5.75"	-	Yes	No	Black	2000/case	C9041*
7.5"	-	No	Yes	Mixed	4500/case	C9000*
7.5"	Poly	No	Yes	Mixed	2000/case	C9002s*
7.5"	-	No	Yes	Mixed	4500/case	C9010
9"	-	Yes	No	Black	3500/case	C9030*
9"	-	No	Yes	Mixed	1600/case	C9050s*
9"	Poly	Yes	No	Mixed	1600/case	C9060s*
9"	Poly	Yes	No	Aqua	1600/case	C9060s (Aqua)*
9"	Poly	Yes	No	Black	1600/case	C9060s (Black)*
9"	Poly	Yes	No	Green	1600/case	C9060s (Green)*
9"	Poly	Yes	No	Red	1600/case	C9060s (Red)*



\*Diagonal-cut end | Made to puncture sealing film

# CUP ACCESSORIES

Karat® offers many cup accessories to ensure our customers have everything they need to properly serve delicious beverages. Choose from an assortment of printed cup jackets, multiple cup holders, and sealing film.



## ✓ key features

- Cup jackets are available in different colors and stock prints
- Cup holders/carriers are available in different sizes
- Cup jacket custom printing is available on white or kraft paper
- Sealing film custom print option available

## Traditional Cup Jackets



### Kraft

FITS (oz)	CASE QTY	ITEM NO.
8	1000/case	C5305 (Kraft)
10 - 24	500/case - BULK	C5325 (Kraft)
10 - 24	1000/case - BULK	C5300 (Kraft)

\*White is available for custom printing

## Cup Holders/Carriers



### Kraft - Molded Fiber

FITS (oz)	CASE QTY	ITEM NO.
2 cups (8 - 24 oz)	600pcs	C5001
4 cups (8 - 32 oz)	300pcs	C5000

## Cup Jackets - Stock Print



### Pink

FITS (oz)	CASE QTY	ITEM NO.
10 - 24	1000/case	C5300 (Pink)



### Stock Print - Fleur

FITS (oz)	CASE QTY	ITEM NO.
10 - 24	1000/case	C5300 (Fleur, Black)
10 - 24	1000/case	C5300 (Fleur, Brown)
10 - 24	1000/case	C5300 (Fleur, Red)



### Stock Print - Holiday

FITS (oz)	CASE QTY	ITEM NO.
10 - 24	1000/case	C5300 (Holiday)

## Sealing Film



### Clear (No Print)

DIA. (mm)	MATERIAL	APPROX. SEALS	CASE QTY	ITEM NO.
95	PP	3830	6 rolls/case	C7020
98	PET	2980	6 rolls/case	C7025
120	PET	2450	6 rolls/case	C7035

### Stock Print

DIA. (mm)	MATERIAL	APPROX. SEALS	CASE QTY	ITEM NO.
95	PP	3830	6 rolls/case	C7010
98	PET	2980	6 rolls/case	C7015
120	PET	2450	6 rolls/case	C7016

PLEASE NOTE: Seal selection must be made based on rim diameter size, PET seals can seal both PET and PP

# PORTION CUPS & LIDS

Karat® portion cups and lids are the perfect solution for providing prepacked or self-serve condiments. PP portion cups and PET lids are light-weight, durable, and shatterproof. Paper portion cups are made of grease resistant paper.

## ✓ key features

- Paper and plastic available
- Plastic portion cups offer a choice of clear or black
- Innovative 1 oz. squat portion cup shares a lid with 1.5 oz. and 2 oz. cups
- PET flat lid design is easily stackable
- Select items made in USA



## Portion Cups - PP



### Clear



SIZE	CASE QTY	ITEM NO.
1 oz tall	2500/case	FP-P100TALL-PP
1 oz	2500/case	FP-P100-PP
1.5 oz	2500/case	FP-P150-PP
2 oz	2500/case	FP-P200-PP
3.25 oz	2500/case	FP-P325-PP
4 oz	2500/case	FP-P400-PP
5.5 oz	2500/case	FP-P550-PP

### Black



SIZE	CASE QTY	ITEM NO.
2 oz	2500/case	FP-P200-PPB
3.25 oz	2500/case	FP-P325-PPB
4 oz	2500/case	FP-P400-PPB
5.5 oz	2500/case	FP-P550-PPB

## Portion Cup - Paper



SIZE	CASE QTY	ITEM NO.
0.5 oz	5000/case	FP-PPC050
1.25 oz	5000/case	FP-PPC125

## Flat Lids for Portion Cups



FITS (oz)	CASE QTY	ITEM NO.
1 oz Tall	2500/case	FP-PL075-PET
1 / 1.5 / 2	2500/case	FP-PL200-PET
1.5 / 2	2500/case	FP-PL200-PP
3.25 / 4 / 5.5	2500/case	FP-PL400-PETU
3.25 / 4 / 5.5	2500/case	FP-PL400-PP

## Portion Cups and Matching Lids

	FP-P100TALL-PP	FP-P100-PP	FP-P150-PP	FP-P200-PP	FP-P325-PP	FP-P400-PP	FP-P550-PP	FP-P200-PPB	FP-P325-PPB	FP-P400-PPB	FP-P550-PPB
FP-PL075-PET	•										
FP-PL200-PET		•	•	•				•			
FP-PL400-PET					•	•	•		•	•	•
FP-PL200-PP			•	•				•			
FP-PL400-PP					•	•	•		•	•	•

Flat Lids for Portion Cups



# PP DELI CONTAINERS & LIDS

Karat® PP deli containers can be used for any ready-to-serve food, or to prepack specialty foods for store shelves. Durable and shatterproof, these containers are perfect for a variety of culinary creations. Paired with our one-size-fits-all lid, Karat PP deli containers and lids are the best packaging solution for all foods. Choose from various sizes and start serving your fresh and delicious creations to-go!

## ✓ key features

- Durable, shatterproof, recyclable material
- Multiple sizes available
- 16 oz. XL also available upon request
- One size lid fits all (8 oz., 12 oz., 16 oz., 24 oz. and 32 oz.)
- Custom print option available



## PP Deli Containers



SIZE	RIM DIA. (mm)	CASE QTY	ITEM NO.
8 oz	117	500/case	FP-DC8-PPU
12 oz	117	500/case	FP-DC12-PPU
16 oz	117	500/case	FP-DC16-PPU
24 oz	117	500/case	FP-DC24-PPU
32 oz	117	500/case	FP-DC32-PPU

## PP Flat Lid for Deli Containers



DIA. (mm)	FITS (oz)	CASE QTY	ITEM NO.
117	8 - 32	500/case	FP-DCL117-PP

# PP INJECTION MOLDED SERIES

Karat® PP injection molded bowls and deli containers are great for holding both hot and cold foods. They will maintain their form, whether they are microwaved or frozen. These items are made from polypropylene, a recyclable plastic. Different sizes of bowls, lids, and containers are available.

## ✓ key features

- Container available in various sizes and styles
- Bundles available with containers and matching lids
- Recyclable
- Microwave, dishwasher, and freezer safe



## PP Injection Molded Bowls



SIZE	COLOR	RIM DIA. (mm)	CASE QTY	ITEM NO.
36 oz	Black	179	300/case	FP-IMB36B
36 oz	White	179	300/case	FP-IMB36W

## PP Flat Lid for Injection Molded Bowls



FITS (oz)	CASE QTY	ITEM NO.
36	300/case	FP-IMBL179

## PP Injection Molded Microwaveable Food Containers with Lids



### Rectangular

SIZE	COMPARTMENT	CASE QTY	ITEM NO.
12 oz	1	150 sets/case	IM-FC1012B
24 oz	1	150 sets/case	IM-FC1024B
28 oz	1	150 sets/case	IM-FC1028B
30 oz	2	150 sets/case	IM-FC1030B-2C
32 oz	3	150 sets/case	IM-FC1032B-3C
38 oz	1	150 sets/case	IM-FC1038B

## PP Injection Molded Deli Containers with Lids



SIZE	CASE QTY	ITEM NO.
8 oz	240 sets/case	FP-IMDC8-PP
12 oz	240 sets/case	FP-IMDC12-PP
16 oz	240 sets/case	FP-IMDC16-PP
24 oz	240 sets/case	FP-IMDC24-PP
32 oz	240 sets/case	FP-IMDC32-PP

### Round



SIZE	COMPARTMENT	CASE QTY	ITEM NO.
16 oz	1	150 sets/case	IM-FC4016B
24 oz	1	150 sets/case	IM-FC4024B
32 oz	1	150 sets/case	IM-FC4032B
48 oz	1	150 sets/case	IM-FC4048B



# PLASTIC HINGED CONTAINERS

Karat® plastic hinged containers have a wide variety of applications in the food industry. PET hinged containers are made from crystal-clear plastic that allows for easy visibility. The PET containers are crack resistant with a typical temperature range of -10°F to 120°F. PP hinged containers feature a sturdy construction with pull-lock tabs and 4 vent holes that allow steam to escape for hot, fresh food or microwaving.

## ✓ key features

- Durable, crack resistant construction
- Multiple sizes and styles
- Recyclable and BPA free
- Stackable



## PET Hinged Containers



SIZE	CASE QTY	ITEM NO.
6" x 6"	500/case	FP-HC66PET-1C
8" x 8"	250/case	FP-HC88PET-1C
9" x 5"	250/case	FP-HC95PET-1C
9" x 9"	200/case	FP-HC99PET-1C

## PP Hinged Containers



SIZE	CASE QTY	ITEM NO.
9" x 9"	200/case	FP-HC99PP-1C
8" x 8"	200/case	FP-HC88PP-3C

# PET SALAD BOWLS & LIDS

Karat® salad bowls and lids provide a tasteful presentation option for cold food. PET plastic is high clarity for easy visibility of the contents inside. Bowls are freezer safe and stackable; lids come with pull tabs for easy opening.

## ✓ key features

- Durable, high clarity plastic
- Multiple sizes available
- Recyclable and BPA free
- Stackable



## PET Salad Bowls



SIZE	CASE QTY	ITEM NO.
16 oz	500/case	FP-BR16-PET
24 oz	300/case	FP-BR24-PET
32 oz	300/case	FP-BR32-PET

## PET Salad Bowl Lids



FITS	CASE QTY	ITEM NO.
16 oz	500/case	FP-BRL146-PET
24 oz	300/case	FP-BRL165-PET
32 oz	300/case	FP-BRL185-PET

# PAPER FOOD BUCKETS & LIDS

Karat® food and short buckets with lids are the perfect solution for serving family-sized portions to-go. Karat paper food buckets come pre-packed with snug paper lids designed with finger holes for easy removal. Karat paper food buckets can be used for popcorn, fried chicken, poké and more!

## ✓ key features

- Paper food buckets come bundled with paper lids
- PE lining is highly resistant to grease and oil
- Custom print option available

### Paper Food Buckets & Lids - White



SIZE	RIM DIA. (mm)	CASE QTY	ITEM NO.
85 oz	189	180 sets/case	C-FB85W_Bundle
130 oz	215	125 sets/case	C-FB130W_Bundle
170 oz	223	150sets/case	C-FB170W_Bundle



### Paper Short Buckets - White



SIZE	CASE QTY	ITEM NO.
32 oz	360/case	FP-PSB32
48 oz	270/case	FP-PSB48

### Dome Lids for Paper Short Buckets



FITS (oz)	CASE QTY	ITEM NO.
32	360/case	FP-PSBL165-OPS
48	270/case	FP-PSBL203-OPS

Karat® Paper Food Trays showcase your food with the iconic Shepherd's Check print. These trays are coated with a food safe gloss making them durable and leak resistant. They can easily transport snacks, side dishes, and finger foods. Don't be afraid to add sauces, dips, or condiments as their open design allows for all the toppings for customer desires. The trays come in six sizes and can fit any takeout order from french fries, chicken tenders, tacos, and more!

## ✓ key features

- Iconic Shepherd's Check stock print design
- Leak resistant and durable material
- Recyclable
- Custom print option available

### Paper Food Trays - Shepherd's Check



SIZE	CASE QTY	ITEM NO.
0.5 lb	1000/case	FP-FT050G
1 lb	1000/case	FP-FT100G
2 lb	1000/case	FP-FT200G
2.5 lb	500/case	FP-FT250G
3 lb	500/case	FP-FT300G
5 lb	500/case	FP-FT500G



# PAPER FOOD TRAYS

# PAPER FOOD CONTAINERS & LIDS

Karat® paper food containers and lids are essential for any foodservice operation that serves hot or cold products. With a double-poly coating, these paper food containers are protected all around. Whether your customers are dining in or taking food home, Karat paper food containers are the preferred solution for attractiveness, effectiveness, and simplicity. Select from different color and lid options for all hot or cold entrées, snacks, or desserts.

## ✓ key features

- Durable double poly-coated paper designed for hot or cold food items
- Choice of dome or flat lids for multiple applications
- Custom print option available



## Gourmet Food Containers - White



SIZE	RIM DIA. (mm)	CASE QTY	ITEM NO.
6 oz	96	500/case	FP-GFC6W
8 oz	96	500/case	FP-GFC8W
10/12 oz	96	500/case	FP-GFC10W
16 oz	96	500/case	FP-GFC16W
32 oz	115	500/case	FP-GFC32W

## Gourmet Food Containers - Stock Print



### Leaf

SIZE	RIM DIA. (mm)	CASE QTY	ITEM NO.
6 oz	96	500/case	FP-GFC6 (Leaf)
10/12 oz	96	500/case	FP-GFC10 (Leaf)
16 oz	96	500/case	FP-GFC16 (Leaf)

## Paper Food Containers - White



SIZE	RIM DIA. (mm)	CASE QTY	ITEM NO.
2 oz	51	2000/case	C-KDP2W
4 oz	76	1000/case	C-KDP4W
5 oz	87	1000/case	C-KDP5W
6 oz	96	1000/case	C-KDP6WU
8 oz	95	1000/case	C-KDP8W
10 oz	96	1000/case	C-KDP10W
12 oz	100	1000/case	C-KDP12W
16 oz	112	1000/case	C-KDP16W
20 oz	127	600/case	C-KDP20W
24 oz	142	600/case	C-KDP24W
28 oz	142	600/case	C-KDP28W
32 oz	142	600/case	C-KDP32W

## Paper Food Containers - Stock Print



### Safari

SIZE	RIM DIA. (mm)	CASE QTY	ITEM NO.
4 oz	76	1000/case	C-KDP4 (Safari)
8 oz	95	1000/case	C-KDP8 (Safari)
12 oz	100	1000/case	C-KDP12 (Safari)
16 oz	112	1000/case	C-KDP16 (Safari)



### Holiday

SIZE	RIM DIA. (mm)	CASE QTY	ITEM NO.
20 oz	127	600/case	C-KDP20 (Holiday)

# PAPER FOOD CONTAINERS & LIDS

## Paper Food Containers - Stock Print



### Dots

SIZE	RIM DIA. (mm)	CASE QTY	ITEM NO.
12 oz	100	1000/case	C-KDP12 (Dots)
16 oz	112	1000/case	C-KDP16 (Dots)
20 oz	127	600/case	C-KDP20 (Dots)



### Blue

SIZE	RIM DIA. (mm)	CASE QTY	ITEM NO.
16 oz	112	1000/case	C-KDP16 (Blue)



### Green

SIZE	RIM DIA. (mm)	CASE QTY	ITEM NO.
4 oz	76	1000/case	C-KDP4 (Green)
5 oz	87	1000/case	C-KDP5 (Green)
6 oz	96	1000/case	C-KDP6 (Green)
8 oz	95	1000/case	C-KDP8 (Green)
12 oz	100	1000/case	C-KDP12 (Green)
16 oz	112	1000/case	C-KDP16 (Green)
20 oz	127	600/case	C-KDP20 (Green)



### Orange

SIZE	RIM DIA. (mm)	CASE QTY	ITEM NO.
12 oz	100	1000/case	C-KDP12 (Orange)
16 oz	112	1000/case	C-KDP16 (Orange)
20 oz	127	600/case	C-KDP20 (Orange)



### Pink

SIZE	RIM DIA. (mm)	CASE QTY	ITEM NO.
4 oz	76	1000/case	C-KDP4 (Pink)
5 oz	87	1000/case	C-KDP5 (Pink)
6 oz	96	1000/case	C-KDP6 (Pink)
8 oz	95	1000/case	C-KDP8 (Pink)
12 oz	100	1000/case	C-KDP12 (Pink)
16 oz	112	1000/case	C-KDP16 (Pink)
20 oz	127	600/case	C-KDP20 (Pink)

## Plastic Lids for Food Containers



### PP Flat Lids for Food Containers (Vented)

DIA. (mm)	FITS (oz)	CASE QTY	ITEM NO.
76	4	1000/case	C-KDL76-PP
87	5	1000/case	C-KDL87-PP
96	6 & 10	1000/case	C-KDL96-PP
95	8	1000/case	C-KDL95-PP
100	12	1000/case	C-KDL100-PP
112	16	1000/case	C-KDL112-PP
127	20	600/case	C-KDL127-PP
142	24 - 32	600/case	C-KDL142-PP

### PP Flat Lids for Gourmet Food Containers (Vented)

DIA. (mm)	FITS (oz)	CASE QTY	ITEM NO.
96	6 - 16	1000/case	C-KDL96-PP
115	32	500/case	C-KDL115-PP



### PET Round Dome Lids

DIA. (mm)	FITS (oz)	CASE QTY	ITEM NO.
76	4	1000/case	C-KDL76-PET
87	5	1000/case	C-KDL87-PET
96	6 & 10	1000/case	C-KDL96-PET
95	8	1000/case	C-KDL95-PET
100	12	1000/case	C-KDL106-PET
112	16	1000/case	C-KDL116-PET
127	20	600/case	C-KDL130-PET

### PET Round Dome Lid for Gourmet Food Containers

DIA. (mm)	FITS (oz)	CASE QTY	ITEM NO.
96	6 - 16	1000/case	C-KDL96-PET



### PET Straight Dome Lid

DIA. (mm)	FITS (oz)	CASE QTY	ITEM NO.
142	24 - 32	600/case	C-KDL142-PET

# FOLD-TO-GO CONTAINERS

Karat® fold-to-go containers offer a classy presentation for take-out items and left-overs, including foods topped with sauce or gravy. These boxes are made from heavy-duty paperboard and contain a poly lining. Containers are microwavable and resistant to cuts, leaks, and grease.

## ✓ key features

- Available in white and kraft
- Heavy-duty construction with a poly lining
- Highly resistant to cuts, leaks, and grease
- Microwavable
- Custom print option available



## Fold-To-Go Boxes - White



SIZE	BOX NO.	CASE QTY	ITEM NO.
30 oz	1	450/case	FP-FTG30W
48 oz	8	300/case	FP-FTG48W
54 oz	2	200/case	FP-FTG54W
76 oz	3	200/case	FP-FTG76W
110 oz	4	160/case	FP-FTG110W

## Fold-To-Go Boxes - Kraft



SIZE	BOX NO.	CASE QTY	ITEM NO.
30 oz	1	450/case	FP-FTG30K
48 oz	8	300/case	FP-FTG48K
54 oz	2	200/case	FP-FTG54K
76 oz	3	200/case	FP-FTG76K
110 oz	4	160/case	FP-FTG110K

# FOOD PAILS

Known internationally for its iconic origami design, the food pail has been the most recognizable food container since the late 1800s. These containers are ideal for hot and cold foods. Food pails are suitable for foods with or without sauces because they feature a doubly poly lining, allowing for better leak resistance. Food pails are a versatile to-go packaging option that is both cost effective and recyclable.

## ✓ key features

- Available in white and kraft
- Poly lining
- Highly resistant to cuts, leaks and grease
- Microwavable
- Custom print option available



## Food Pails - White



SIZE	BOX NO.	CASE QTY	ITEM NO.
8 oz	8	450/case	FP-FP08W
16 oz	16	450/case	FP-FP16W
26 oz	26	450/case	FP-FP26W
32 oz	32	450/case	FP-FP32W

## Food Pails - Kraft



SIZE	BOX NO.	CASE QTY	ITEM NO.
32 oz	32	450/case	FP-FP32K

# ALUMINUM PRODUCTS

Maintain the moisture and temperature of your food with aluminum pans, containers, and foil. Aluminum containers are available in various sizes with matching foil laminated paper board or OPS dome lids. Steam table pans with matching lids are available in both full and half sizes, with varying depths and a heavy-duty option to fit all of your catering and large to-go order needs. Aluminum Foil is available by the roll and sheet in regular and heavy-duty varieties to tackle multiple kitchen uses.

## ✓ key features

- Leak resistant and oven safe
- Available in multiple sizes and styles
- Heavy-duty weights available
- Ideal for takeout and catering events



## Aluminum Foil Containers



FITS	CASE QTY	ITEM NO.
7"	500/case	AF-CR07
8"	500/case	AF-CR08
9"	500/case	AF-CR09

## Foil Laminated Paper Board Lids For Aluminum Foil Containers



FITS	CASE QTY	ITEM NO.
7"	500/case	AF-PL07
8"	500/case	AF-PL08
9"	500/case	AF-PL09

## OPS Dome Lids For Aluminum Foil Containers



FITS	CASE QTY	ITEM NO.
7"	500/case	AF-KDL07
8"	500/case	AF-KDL08
9"	500/case	AF-KDL09

## Steam Table Pans



SIZE	DEPTH	CASE QTY	ITEM NO.
Full Size	Deep	50/case	AF-STP100
Full Size	Deep	50/case	AF-STP105*
Full Size	Medium	50/case	AF-STP130
Half Size	Deep	100/case	AF-STP300

\*Heavy Duty

## Foil Lid For Steam Table Pans



FITS	CASE QTY	ITEM NO.
Full Size	50/case	AF-STPL01
Half Size	100/case	AF-STPL03

## Aluminum Pop-Up Foil Sheets



SIZE	SHEET QTY	ITEM NO.
10.75" x 12"	500/box	FW-AFS100
10.75" x 12"	500/box	FW-AFS101*
9" x 10.75"	500/box	FW-AFS201*

\*Heavy Duty

## Aluminum Foil Rolls



SIZE	UNIT QTY	ITEM NO.
12" x 1000'	1 roll	FW-AFR200
18" x 500'	1 roll	FW-AFR205
18" x 500'	1 roll	FW-AFR206*

\*Heavy Duty



# TAKE-OUT BAGS

Karat® offers a variety of options when it comes to presenting to-go orders or leftovers. Our white plastic bags are available in two sizes to accommodate large and small carryout needs. Paper bags come with and without handles in multiple sizes so you have the perfect size bag every time. These reusable paper bags are made with recycled material.

## ✓ key features

- Multiple sizes and styles available
- Reusable and recyclable
- Custom print option available



## Paper To-Go Bags - Kraft



WEIGHT (lbs.)	BUNDLE QTY	ITEM NO.
4	2000/bundle	FP-SOS04K
6	2000/bundle	FP-SOS06K
8	2000/bundle	FP-SOS08K

## Paper Shopping Bags - Kraft



SIZE (L x W x G)	CASE QTY	ITEM NO.
Balboa (8.1" x 10.6" x 4.5")	250/case	FP-SB100
Laguna (9.6" x 13.4" x 5.3")	250/case	FP-SB110
Malibu (12.2" x 14" x 7.5")	250/case	FP-SB120

## Plastic To-Go Bags - White



FITS (oz)	CASE WT	ITEM NO.
Fits up to 2 cups	22lbs	Y3016s
Fits up to 4 cups	22lbs	Y3017s

# DELI WRAP/PAPER LINER SHEETS

Wrap your food or line your food baskets with deli wrap sheets from Karat®. These sheets are grease resistant to keep your food presentation nice and clean. Choose from kraft or white pre-cut sheets to fit your business needs.

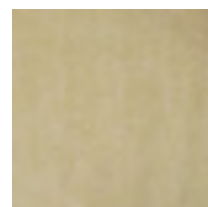
## ✓ key features

- Grease resistant
- Pre-cut
- Custom sizes and print options available



### White

SIZE	CASE QTY	ITEM NO.
12" x 12"	5000/case	FW-DPS401



### Kraft

SIZE	CASE QTY	ITEM NO.
12" x 12"	5000/case	FW-DPS400

The Karat® catering line features quality items for casual and semi-formal gatherings, weddings, or any special event. Choose from wine and champagne cups, serving spoons, tongs, plates, and more.

## ✓ key features

- High density, high clarity plastic
- Recyclable
- Ideal for catering and hospitality services



## Scalloped Plates



### Black

SIZE	COLOR	CASE QTY	ITEM NO.
7"	Black	240/case	CS-PS07B
9"	Black	120/case	CS-PS09B
10.25"	Black	120/case	CS-PS10B



### White

SIZE	COLOR	CASE QTY	ITEM NO.
7"	White	240/case	CS-PS07W
9"	White	120/case	CS-PS09W
10.25"	White	120/case	CS-PS10W

## Wine & Champagne Cups



### Coupe

SIZE	CASE QTY	ITEM NO.
4 oz	240/case	CS-WC04



### Flute

SIZE	CASE QTY	ITEM NO.
5 oz	100/case	CS-WF05



### Standard

SIZE	CASE QTY	ITEM NO.
8 oz	100/case	CS-WS08

## Serving Utensils



### Serving Fork

SIZE	CASE QTY	ITEM NO.
9"	96/case	CS-SF09



### Serving Spoon

SIZE	CASE QTY	ITEM NO.
9"	96/case	CS-SS09



### Serving Tong

SIZE	CASE QTY	ITEM NO.
7"	48/case	CS-ST07
12"	48/case	CS-ST12



### Serving Salad Tong

SIZE	CASE QTY	ITEM NO.
11"	24/case	CS-SST11

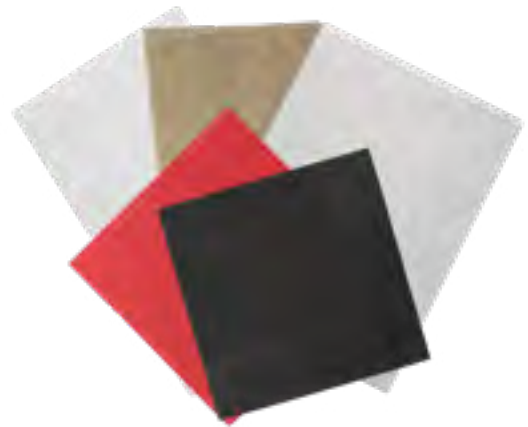


# NAPKINS

Napkins are an essential part of both food and beverage service. Choose from our interfold napkins for easy dispensing, or add a touch of class to the table with our 2 or 3 ply dinner napkins. Karat® napkins are available in different sizes and colors.

## ✓ key features

- Various colors and styles available
- Most napkins come in 1, 2, and 3 ply
- Napkin dispensers available
- Interfold dispense napkins are more cost effective compared to traditional dispensing
- Low minimum custom print option available



## Dispense Nap® Tabletop Dispenser

COLOR	FITS	NAPKIN TYPE	UNIT QTY	ITEM NO.
Smoke	375 napkins	Interfold	1 dispenser	KN-IFDT2

## Dispense Nap® Stand/Wall Mount Dispenser

COLOR	FITS	NAPKIN TYPE	UNIT QTY	ITEM NO.
Black	1000 napkins	Interfold	1 dispenser	KN-IFDS2



## Interfold Dispense Nap®



COLOR	SIZE	FOLD	CASE QTY	ITEM NO.
White	8" x 6.5"	1/8   2 ply	250pcs/bag, 24bags/case	KN-F86-2W
Kraft	8" x 6.5"	1/8   2 ply	250pcs/bag, 24bags/case	KN-F86-2K



## Off-fold Napkins



COLOR	SIZE	FOLD	CASE QTY	ITEM NO.
White	12" x 13"	1/8   1 ply	250pcs/bag, 24bags/case	KN-F1213-1W
Kraft	12" x 13"	1/8   1 ply	250pcs/bag, 24bags/case	KN-F1213-1K



## Beverage Napkins



COLOR	SIZE	FOLD	CASE QTY	ITEM NO.
White	9" x 9"	1/4   1 ply	500pcs/bag, 8bags/case	KN-B99-1W
Kraft	9" x 9"	1/4   1 ply	500pcs/bag, 8bags/case	KN-B99-1K
Black	9.5" x 9.5"	1/4   2 ply	100pcs/bag, 10bags/case	KN-B9595-2BLK
Black	9.5" x 9.5"	1/4   2 ply	100pcs/bag, 40bags/case	KN-B9595-2BLK (4000)
Red	9.5" x 9.5"	1/4   2 ply	100pcs/bag, 10bags/case	KN-B9595-2RED
Black	10" x 10"	1/4   1 ply	250pcs/bag, 20bags/case	KN-B1010-1B
White	10" x 10"	1/4   2 ply	100pcs/bag, 30bags/case	KN-B1010-2W*
Black	10" x 10"	1/4   2 ply	100pcs/bag, 10bags/case	KN-B1010-2B (1000)*

\*Premium

## Dinner Napkins



COLOR	SIZE	FOLD	CASE QTY	ITEM NO.
White	15" x 17"	1/8   1 ply	250pcs/bag, 12bags/case	KN-D1517-1W
White	15" x 17"	1/8   2 ply	150pcs/bag, 20bags/case	KN-D1517-2W*
Kraft	15" x 17"	1/8   2 ply	150pcs/bag, 20bags/case	KN-D1517-2K*
White	17" x 17"	1/8   2 ply	50pcs/bag, 40bags/case	KN-D1717-2W (2000)*
White	17" x 17"	1/8   3 ply	50pcs/bag, 40bags/case	KN-D1717-3W (2000)*

\*Premium

## Tall Fold Dispenser Napkin



COLOR	SIZE	FOLD	CASE QTY	ITEM NO.
White	13.5" x 7"	1/8   1 ply	500pcs/bag, 20bags/case	KN-F137-1W

# UTENSILS

Karat® utensils range from medium weight to extra heavy weight plastic, so it is easy to find the set that best suits your operational needs. Karat offers an assortment of colors, styles, and packaging that will create the ideal dining experience for your customers.

## PP Color Changing Spoons -

Medium Weight



COLOR	CASE QTY	ITEM NO.
Pink to Purple	100pcs/bag, 10bags/case	U4000 (PKPU)
Yellow to Green	100pcs/bag, 10bags/case	U4000 (YLGE)
Yellow to Orange	100pcs/bag, 10bags/case	U4000 (YLOR)

## PS Tasting Spoons



COLOR	CASE QTY	ITEM NO.
White	500pcs/bag, 8bags/case	U2450W
Pink	500pcs/bag, 8bags/case	U2450 (Pink)

## PS Gelato Spoons



COLOR	CASE QTY	ITEM NO.
Mixed	500pcs/bag, 4bags/case	U2400 (Rainbow)*

\*Rainbow (red, orange, green, and purple)

## PS Tea Spoons - Heavy Weight



Multipack

COLOR	TYPE	CASE QTY	ITEM NO.
Orange	Tea Spoon	100pcs/bag, 10bags/case	U2100 (Orange)
Red	Tea Spoon	100pcs/bag, 10bags/case	U2100 (Red)
Blue	Tea Spoon	100pcs/bag, 10bags/case	U2100 (Blue)
Green	Tea Spoon	100pcs/bag, 10bags/case	U2100 (Green)
Pink	Tea Spoon	100pcs/bag, 10bags/case	U2100 (Pink)
Purple	Tea Spoon	100pcs/bag, 10bags/case	U2100 (Purple)
Yellow	Tea Spoon	100pcs/bag, 10bags/case	U2100 (Yellow)
Mixed	Tea Spoon	100pcs/bag, 10bags/case	U2100 (Rainbow)*

\*Rainbow (blue, green, pink, purple, and yellow) 2 bags per color

## PS Utensils - Medium Weight



Fork Knife Soup Spoon Tea Spoon

Bulk Pack

COLOR	TYPE	CASE QTY	ITEM NO.
White	Fork	1000/case	U2040W
	Knife	1000/case	U2041W
	Soup Spoon	1000/case	U2042W
	Tea Spoon	1000/case	U2043W
Black	Fork	1000/case	U2040B
	Knife	1000/case	U2041B
	Soup Spoon	1000/case	U2042B
	Tea Spoon	1000/case	U2043B

## PS Utensils - Medium-Heavy Weight

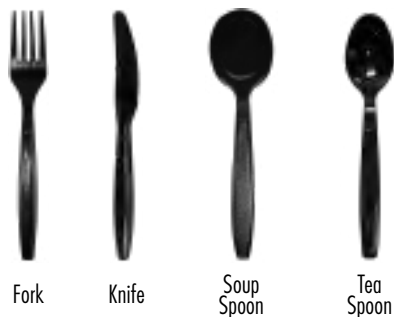


Fork Knife Soup Spoon Tea Spoon

Bulk Pack

COLOR	TYPE	CASE QTY	ITEM NO.
White	Fork	1000/case	U2050W
	Knife	1000/case	U2051W
	Soup Spoon	1000/case	U2052W
	Tea Spoon	1000/case	U2053W
Black	Fork	1000/case	U2050B
	Knife	1000/case	U2051B
	Soup Spoon	1000/case	U2052B
	Tea Spoon	1000/case	U2053B

## PS Utensils - Extra Heavy Weight



### Multipack

COLOR	TYPE	CASE QTY	ITEM NO.
White	Fork	100pcs/bag, 10bags/case	U2020W
	Knife	100pcs/bag, 10bags/case	U2021W
	Soup Spoon	100pcs/bag, 10bags/case	U2022W
	Tea Spoon	100pcs/bag, 10bags/case	U2023W
Black	Fork	100pcs/bag, 10bags/case	U2020B
	Knife	100pcs/bag, 10bags/case	U2021B
	Soup Spoon	100pcs/bag, 10bags/case	U2022B
	Tea Spoon	100pcs/bag, 10bags/case	U2023B
Clear	Fork	100pcs/bag, 10bags/case	U2020C
	Knife	100pcs/bag, 10bags/case	U2021C
	Tea Spoon	100pcs/bag, 10bags/case	U2023C

### Bulk Pack

COLOR	TYPE	CASE QTY	ITEM NO.
Black	Fork	1000/case	U3020B
	Knife	1000/case	U3021B
	Soup Spoon	1000/case	U3022B
	Tea Spoon	1000/case	U3023B

## Wrapped PS Utensils - Extra Heavy Weight



### Bulk Pack

COLOR	TYPE	CASE QTY	ITEM NO.
White	Fork	1000/case	U3520W
	Knife	1000/case	U3521W
	Soup Spoon	1000/case	U3522W
	Tea Spoon	1000/case	U3523W
Black	Fork	1000/case	U3520B
	Knife	1000/case	U3521B
	Soup Spoon	1000/case	U3522B
	Tea Spoon	1000/case	U3523B

## PP Utensils - Medium Weight



### Bulk Pack

COLOR	TYPE	CASE QTY	ITEM NO.
White	Fork	1000/case	U2000W
	Knife	1000/case	U2001W
	Soup Spoon	1000/case	U2002W
	Tea Spoon	1000/case	U2003W
	Dessert Spoon	1000/case	U2004
Black	Fork	1000/case	U2000B
	Knife	1000/case	U2001B
	Soup Spoon	1000/case	U2002B
	Tea Spoon	1000/case	U2003B



U2008 (Green) U2008 (Orange) U2008 (Pink) U2008 (Purple)

### Multipack

COLOR	TYPE	CASE QTY	ITEM NO.
White	Fork	100pcs/bag, 10bags/case	U2005W
	Knife	100pcs/bag, 10bags/case	U2006W
	Soup Spoon	100pcs/bag, 10bags/case	U2007W
	Tea Spoon	100pcs/bag, 10bags/case	U2008W
	Spork	100pcs/bag, 10bags/case	U2210
Green	Tea Spoon	100pcs/bag, 10bags/case	U2008 (Green)
Orange	Tea Spoon	100pcs/bag, 10bags/case	U2008 (Orange)
Pink	Tea Spoon	100pcs/bag, 10bags/case	U2008 (Pink)
Purple	Tea Spoon	100pcs/bag, 10bags/case	U2008 (Purple)
Mixed	Tea Spoon	100pcs/bag, 10bags/case	U2008 (Rainbow)*

\*Rainbow (blue, green, pink, purple, and yellow) 2 bags per color

# UTENSILS

## PP Utensils - Medium-Heavy Weight



Fork Knife Tea Spoon

### Bulk Pack

COLOR	TYPE	CASE QTY	ITEM NO.
White	Fork	1000/case	U2010W
	Knife	1000/case	U2011W
	Tea Spoon	1000/case	U2013W
Black	Fork	1000/case	U2010B
	Knife	1000/case	U2011B
	Tea Spoon	1000/case	U2013B

## PP Utensils - Extra Heavy Weight

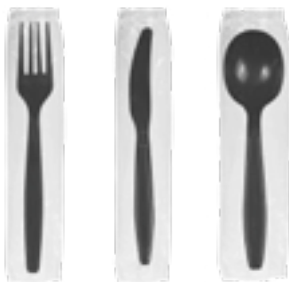


Fork Knife Soup Spoon Tea Spoon



U2205 (Red) U2205 (Orange) U2033 (Green) U2033 (Pink) U2008 (Purple)

## Wrapped PP Utensils - Heavy Weight



Fork Knife Soup Spoon

### Bulk Pack

COLOR	TYPE	CASE QTY	ITEM NO.
White	Fork	1000/case	U3530W
	Knife	1000/case	U3531W
	Soup Spoon	1000/case	U3532W
Black	Fork	1000/case	U3530B
	Knife	1000/case	U3531B
	Soup Spoon	1000/case	U3532B

### Multipack

COLOR	TYPE	CASE QTY	ITEM NO.
Black	Fork	100pcs/bag, 10bags/case	U2030
	Knife	100pcs/bag, 10bags/case	U2031
	Soup Spoon	100pcs/bag, 10bags/case	U2032
	Tea Spoon	100pcs/bag, 10bags/case	U2033
White	Fork	100pcs/bag, 10bags/case	U2030W
	Knife	100pcs/bag, 10bags/case	U2031W
	Soup Spoon	100pcs/bag, 10bags/case	U2032W
	Tea Spoon	100pcs/bag, 10bags/case	U2033W
Orange	Fork	100pcs/bag, 10bags/case	U2030 (Orange)
	Knife	100pcs/bag, 10bags/case	U2031 (Orange)
	Tea Spoon	100pcs/bag, 10bags/case	U2033 (Orange)
Red	Tea Spoon	100pcs/bag, 10bags/case	U2033 (Red)
Pink	Tea Spoon	100pcs/bag, 10bags/case	U2033 (Pink)
Green	Tea Spoon	100pcs/bag, 10bags/case	U2033 (Green)
White	Soda Spoon	100pcs/bag, 10bags/case	U2205 (White)
Red	Soda Spoon	100pcs/bag, 10bags/case	U2205 (Red)
Orange	Soda Spoon	100pcs/bag, 10bags/case	U2205 (Orange)

## PP Utensils - Premium Extra Heavy Weight



Fork Knife Tea Spoon

COLOR	TYPE	CASE QTY	ITEM NO.
White	Fork	100pcs/bag, 10bags/case	U2060W
	Knife	100pcs/bag, 10bags/case	U2061W
	Tea Spoon	100pcs/bag, 10bags/case	U2063W
Black	Fork	100pcs/bag, 10bags/case	U2060B
	Knife	100pcs/bag, 10bags/case	U2061B
	Tea Spoon	100pcs/bag, 10bags/case	U2063B

## PP Utensils - Heavy Duty Extra Heavy Weight



Soup Spoon

COLOR	TYPE	CASE QTY	ITEM NO.
White	Soup Spoon	100pcs/bag, 10bags/case	U2072W
Black	Soup Spoon	100pcs/bag, 10bags/case	U2072B

## PS Cutlery Kit



### Heavy Weight with Salt and Pepper

COLOR	TYPE	CASE QTY	ITEM NO.
White	Kit	250 kits/case	U2204W
Black	Kit	250 kits/case	U2204B

Kit Includes: 1 x Knife, 1 x Fork, 1 x Tea Spoon, 1 x 1-Ply Napkin, 1 x Salt, 1 x Pepper, Individually Poly Wrapped



### Heavy Weight

COLOR	TYPE	CASE QTY	ITEM NO.
Black	Kit	250 kits/case	U2200

Kit Includes: 1 x Knife, 1 x Fork, 1 x Soup Spoon, 1 x 1-Ply Napkin, Individually Poly Wrapped

## PP Cutlery Kits



### Medium-Heavy Weight with Salt and Pepper

COLOR	TYPE	CASE QTY	ITEM NO.
White	Kit	250 kits/case	U2202W
Black	Kit	250 kits/case	U2202B

Kit Includes: 1 x Knife, 1 x Fork, 1 x Soup Spoon, 1 x 1-Ply Napkin, 1 x Salt, 1 x Pepper, Individually Poly Wrapped



### Medium-Heavy Weight

COLOR	TYPE	CASE QTY	ITEM NO.
White	Kit	250 kits/case	U2201W
Black	Kit	250 kits/case	U2201B

Kit Includes: 1 x Knife, 1 x Fork, 1 x Soup Spoon, 1 x 1-Ply Napkin, Individually Poly Wrapped



### Heavy Weight with Salt and Pepper

COLOR	TYPE	CASE QTY	ITEM NO.
White	Kit	250 kits/case	U2203W
Black	Kit	250 kits/case	U2203B

Kit Includes: 1 x Knife, 1 x Fork, 1 x Tea Spoon, 1 x 1-Ply Napkin, 1 x Salt, 1 x Pepper, Individually Poly Wrapped

## Bamboo Chopsticks



SIZE	Color	CASE QTY	ITEM NO.
9"	White	50pcs/bag, 20bags/case	U9050
9"	Bamboo	50pcs/bag, 20bags/case	U9000
9"	Dynasty	50pcs/bag, 20bags/case	U9001

# JANITORIAL SUPPLIES

Another important aspect of running a restaurant is having the necessary supplies to keep it clean. Karat® janitorial supplies are sure to keep your establishment fresh and clean. Karat offers paper towels and toilet seat covers made from recycled paper resources.



## Paper Towel Rolls

COLOR	CASE QTY	ITEM NO.
White	750 ft/roll, 6 rolls/case	JS-RTW750
Kraft	750 ft/roll, 6 rolls/case	JS-RTK750



## Junior Paper Towel Rolls

COLOR	CASE QTY	ITEM NO.
White	350 ft/roll, 12 rolls/case	JS-RTW350



## Individually Wrapped Toilet Tissue Rolls



COLOR	CASE QTY	ITEM NO.
White	500 sheets/roll, 48 rolls/case	JS-TTW500



## Jumbo Tissue Rolls

COLOR	CASE QTY	ITEM NO.
White	1000 ft/roll, 12 rolls/case	JS-JRT1000



## Multifold Dispensable Paper Towels

COLOR	CASE QTY	ITEM NO.
White	334 sheets/pack, 12 packs/case	JS-MFW4000
Kraft	334 sheets/pack, 12 packs/case	JS-MFK4000



## Toilet Seat Covers

COLOR	CASE QTY	ITEM NO.
White	250 covers/pack, 20 packs/case	JS-TSC5000

## Dispensers



### Auto-cut Manual Paper Towel Roll Dispenser

COLOR	ITEM NO.
White	JSD-5300-5-1
Smoke	JSD-5300B-5-1



### Manual Foam Soap Dispenser & Refillable Foam Bottle

COLOR	DESCRIPTION	ITEM NO.
White	Foam Soap Dispenser 0.4ml	JSD-1570-2
White	Refillable Foam Bottle 0.4ml	JSD-FOAM



### 9" Jumbo Tissue Roll Dispenser

COLOR	ITEM NO.
White	JSD-3500-2



### Standard Multi-Fold Dispenser

COLOR	ITEM NO.
White	JSD-3300-2

Keep your hands clean with Karat® disposable gloves. Great for all types of businesses, these gloves are easy to slip on and off and allow for more effective time management between tasks. Choose from different materials, sizes, and powder/powder-free options to find the best gloves to get the job done.

## Latex Gloves

Food Preparation | General Use | Cooking | Janitorial



### Powdered

COLOR	SIZE	CASE QTY	ITEM NO.
Natural	Small	100pcs/box, 10boxes/case	FP-GL1011
	Medium	100pcs/box, 10boxes/case	FP-GL1012
	Large	100pcs/box, 10boxes/case	FP-GL1013
	X-Large	100pcs/box, 10boxes/case	FP-GL1014

### Powder-Free

COLOR	SIZE	CASE QTY	ITEM NO.
Natural	Small	100pcs/box, 10boxes/case	FP-GL1016
	Medium	100pcs/box, 10boxes/case	FP-GL1017
	Large	100pcs/box, 10boxes/case	FP-GL1018
	X-Large	100pcs/box, 10boxes/case	FP-GL1019

## Nitrile Gloves

Food Preparation | General Use | Cooking | Janitorial | Latex Free



### Powder-Free

COLOR	SIZE	CASE QTY	ITEM NO.
Blue	Small	100pcs/box, 10boxes/case	FP-GN1026
	Medium	100pcs/box, 10boxes/case	FP-GN1027
	Large	100pcs/box, 10boxes/case	FP-GN1028
	X-Large	100pcs/box, 10boxes/case	FP-GN1029

## Poly Gloves

Food Preparation | Latex Free



### Powder-Free

COLOR	SIZE	CASE QTY	ITEM NO.
Clear	Small	500pcs/box, 20boxes/case	FP-GP2001-10K*
	Large	500pcs/box, 4boxes/case	FP-GP2003-2K
	Large	500pcs/box, 20boxes/case	FP-GP2003-10K*

\*Distributor Box Pack

## Vinyl Gloves

Food Preparation | General Use | Cooking | Janitorial



### Powder-Free/DINP-Free

COLOR	SIZE	CASE QTY	ITEM NO.
Clear	Small	100pcs/box, 10boxes/case	FP-GV1006
	Medium	100pcs/box, 10boxes/case	FP-GV1007
	Large	100pcs/box, 10boxes/case	FP-GV1008
	X-Large	100pcs/box, 10boxes/case	FP-GV1009
Blue	Large	100pcs/box, 4boxes/case	FP-GVB0408



## GENERAL SUPPLIES

Keep your workplace hygienic with sanitation products by Karat®. Bouffant caps and beard covers are perfect for maintaining sterile manufacturing and foodservice environments. These products prevent hair from falling into food or production items. Karat also offers dust masks to protect employees from inhaling airborne particles as well as thermal paper rolls for your front of house operations.



### Bouffant Cap

COLOR	CASE QTY	ITEM NO.
White	100 caps/box, 10 boxes/case	GS-PPE105



### Dust Mask

COLOR	CASE QTY	ITEM NO.
White	50 masks/box, 20boxes/case	GS-PPE110



### Beard Cover

COLOR	CASE QTY	ITEM NO.
White	100 covers/box, 10 boxes/case	GS-PPE100



### Thermal Paper Rolls

BPA Free

SIZE	CASE QTY	ITEM NO.
2 1/4" x 50'	50 rolls/case	GS-TR225050
2 1/4" x 85'	50 rolls/case	GS-TR225085
2 1/4" x 200'	50 rolls/case	GS-TR225200
3 1/8" x 220'	50 rolls/case	GS-TR313220
3 1/8" x 273'	50 rolls/case	GS-TR313273

## WAREHOUSE SUPPLIES

See what products we offer to accommodate your warehouse needs! Try our wrap stretch film products to store large units safely. We offer both hand wrap stretch film and machine wrap stretch film.



### Hand Wrap Stretch Films

SIZE	GAUGE	CASE QTY	ITEM NO.
17.7"x1476'	43	1476 ft/roll, 4 rolls/case	WS-1843H15
18"x1000'	80	1000 ft/roll, 4 rolls/case	WS-1880H10
18"x1500'	80	1500 ft/roll, 4 rolls/case	WS-1880H15

### Machine Wrap Stretch Film

SIZE	GAUGE	CASE QTY	ITEM NO.
20"x5000'	63	5000 ft/roll, 1 roll/case	WS-2063M50



# Karat earth®

Compostable and Eco-Friendly Food Service Disposables

What is PLA (Polylactide)?

Eco-Friendly PLA Cups & Lids

Eco-Friendly Paper Hot Cups & Lids

Eco-Friendly Paper Cold Cups & Lids

Eco-Friendly Paper & PLA Straws

Eco-Friendly Paper Food Containers & Lids

Eco-Friendly PLA Hinged Containers

Eco-Friendly PLA Salad Bowls & Lid

Eco-Friendly PLA Portion Cups & Lids

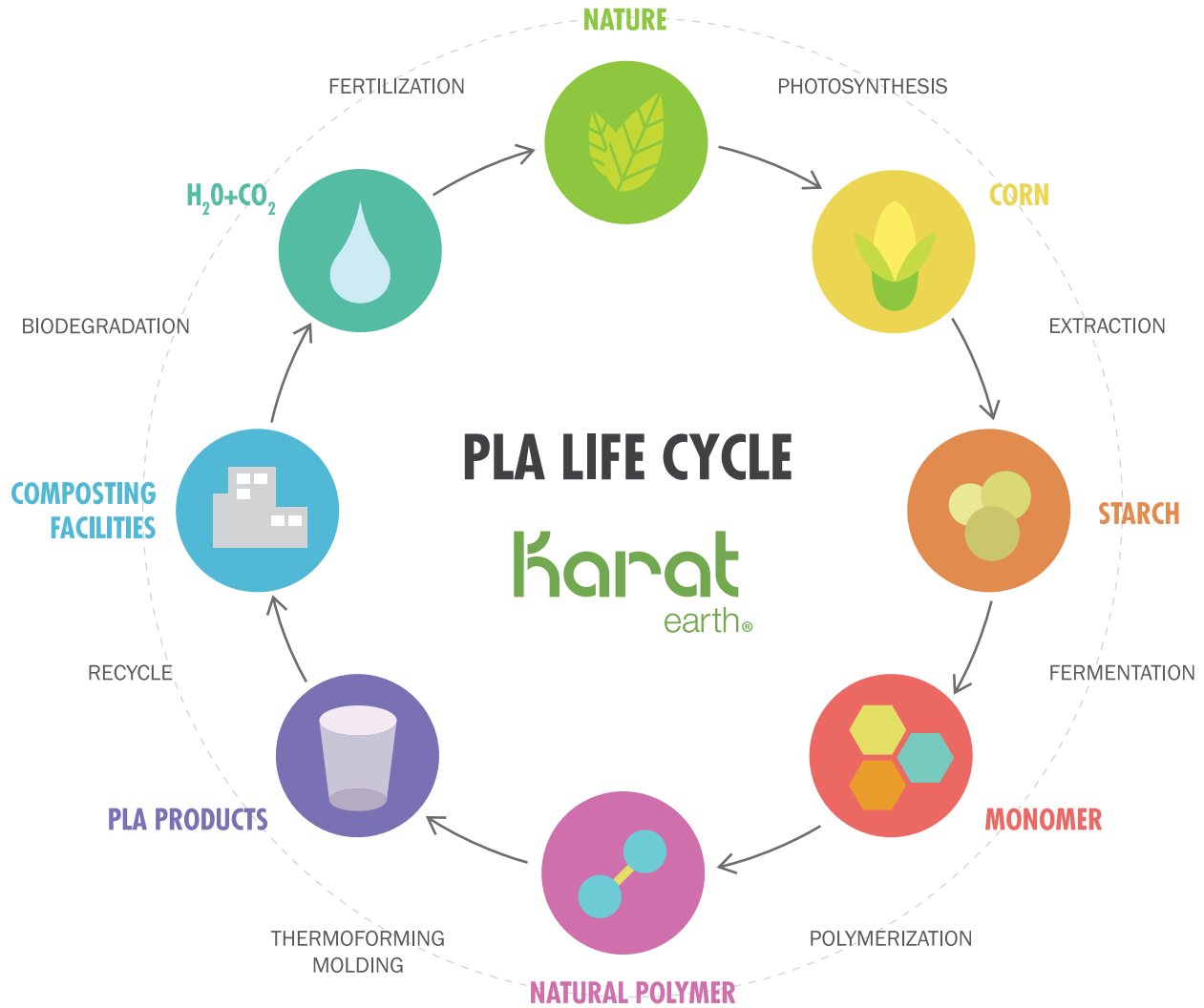
Bagasse Containers & Dinnerware

Eco-Friendly Utensils



# WHAT IS PLA (POLYLACTIDE)?

Polyactic acid (PLA) is a thermoplastic derived from renewable resources. Common renewable resources used include corn starch, tapioca roots, or sugarcane. PLA is compostable where facilities exist.



## INGEO™ PLA ATTRIBUTES

- APPEARANCE** - Excellent gloss, transparency, and clarity for cups and containers
- VERSATILITY** - Easy to shape, mold, emboss and print, allowing endless branding opportunities
- FOOD PRESERVATION** - Provides exceptional barrier to keep flavors tasting fresh
- BPA FREE** - Derived from all natural resources and free of the harmful chemical Bisphenol (BPA)

## FACTS & ADVANTAGES OF PLA

- 60% LESS** non-renewable energy used
- 80% LESS** greenhouse gases
- 100%** renewable resources (not oil)



## MAKE THE SWITCH!

Karat® Earth PLA products are made with NatureWorks® Ingeo™ PLA. Ingeo is a biopolymer that is manufactured using plant sugars from field corn and from any sugar source. Ingeo is not petroleum-based, so it is nonvolatile and odorless if incinerated. Make the choice today, for a better tomorrow.

## SELECT PRODUCTS HAVE CERTIFICATIONS BELOW:



**COMPOSTABLE**  
IN INDUSTRIAL FACILITIES

Check locally, as these do not exist in many communities. **Not suitable for backyard composting.** CERT # 10528492

# ECO-FRIENDLY PLA CUPS & LIDS

Make the world a greener place by switching to Karat Earth® PLA disposables. Karat Earth uses only NatureWorks® Ingeo™ PLA plastic derived from renewable resources. Karat Earth PLA cups and lids are available in standard cup and lid sizes, making them an easy alternative. Karat Earth PLA products are compostable in commercial facilities.

## ✓ key features

- Made from renewable resources
- Select items are BPI®, Cedar Grove®, and/or CMA certified
- Durable and shatter-proof
- Compostable in commercial facilities
- Clear and stock print design
- Custom printing available



## PLA Cold Cups



SIZE	RIM DIA. (mm)	CASE QTY	ITEM NO.
3 oz	62	2500/case	KE-KC3*
12 oz	98	1000/case	KE-KC12
16 oz	98	1000/case	KE-KC16
20 oz	98	1000/case	KE-KC20
24 oz	98	600/case	KE-KC24

\*NOT BPI®, Cedar Grove®, or CMA certified.

## PLA Lids for PLA Cold Cups



### Flat Lids

DIA. (mm)	FITS (oz)	CASE QTY	ITEM NO.
98	12 - 24	1000/case	KE-KC626TS
98	12 - 24	1000/case	KE-KC626TS-NH

## PLA Cold Cups - Stock Print "One Earth"



SIZE	RIM DIA. (mm)	CASE QTY	ITEM NO.
12 oz	98	1000/case	KE-KC12G
16 oz	98	1000/case	KE-KC16G
20 oz	98	1000/case	KE-KC20G
24 oz	98	600/case	KE-KC24G



### Dome Lids

DIA. (mm)	FITS (oz)	CASE QTY	ITEM NO.
98	12 - 24	1000/case	KE-KDL626
98	12 - 24	1000/case	KE-KDL626-NH

# ECO-FRIENDLY PAPER HOT CUPS & LIDS

Karat Earth® eco-friendly paper hot cups are perfect for any hot beverage, including coffee and tea. These cups are available in white or “One Earth” stock print. We have an assortment of sizes ranging from 4 oz. to 20 oz. so you can find the size you need.

## ✓ key features

- Made from renewable resources
- Select items are BPI®, Cedar Grove®, and/or CMA certified
- Compostable in commercial facilities
- Stock print design available
- Custom printing available



## Eco-Friendly Paper Hot Cups - White



SIZE	RIM DIA. (mm)	CASE QTY	ITEM NO.
4 oz	62	1000/case	KE-K504W
8 oz	80	1000/case	KE-K508W
12 oz	90	1000/case	KE-K512W
16 oz	90	1000/case	KE-K516W
20 oz	90	600/case	KE-K520W

## Eco-Friendly Paper Insulated Hot Cups - “One Earth” Stock Print



SIZE	RIM DIA. (mm)	CASE QTY	ITEM NO.
8 oz	80	500/case	KE-KIC508
12 oz	90	500/case	KE-KIC512
16 oz	90	500/case	KE-KIC516

## Eco-Friendly Paper Hot Cups - “One Earth” Stock Print



SIZE	RIM DIA. (mm)	CASE QTY	ITEM NO.
8 oz	80	1000/case	KE-K508
10 oz	90	1000/case	KE-K510
12 oz	90	1000/case	KE-K512
16 oz	90	1000/case	KE-K516
20 oz	90	600/case	KE-K520

## PLA Sipper Dome Lids for Paper Hot Cups



DIA. (mm)	FITS (oz)	CASE QTY	ITEM NO.
80	8	1000/case	KE-KDL508
90	10 - 20	1000/case	KE-KDL516

# ECO-FRIENDLY PAPER COLD CUPS & LIDS

Karat Earth® eco-friendly paper cold cups are lined with PLA on the interior and exterior to keep your beverages cold and protected against condensation. Karat Earth cold cups are perfect for fountain drinks, smoothies and more. They feature our “One Earth” stock print, and are available in 16 oz., 22 oz. and 32 oz. with matching lids.

## ✓ key features

- Made from renewable resources
- Select items are BPI®, Cedar Grove®, and/or CMA certified
- PLA lined
- Stock design prints
- Compostable in commercial facilities
- Custom printing available



## Eco-Friendly Paper Cold Cups - “One Earth” Stock Print



SIZE	RIM DIA. (mm)	CASE QTY	ITEM NO.
16 oz	90	1000/case	KE-KCP16
22 oz	90	1000/case	KE-KCP22
32 oz	104.5	600/case	KE-KCP32

## PLA Flat Lids for Paper Cold Cups



DIA. (mm)	FITS (oz)	CASE QTY	ITEM NO.
90	12 - 22	1000/case	KE-KCL90
104.5	32	600/case	KE-KCL1045

# ECO-FRIENDLY PAPER & PLA STRAWS

Karat Earth® offers a variety of PLA and Paper straws in different lengths and sizes to sip from any cup or beverage. PLA is a renewable resource that can be composted back into the environment. In an effort to be more eco-friendly Karat Earth straws are an eco-friendly alternative to standard plastic straws.

## ✓ key features

- Made from renewable resources
- Compostable in commercial facilities
- Variety of sizes and lengths available



## Eco-Friendly Paper Straws



LENGTH (in)	Size	WRAPPER	COLOR(S)	CASE QTY	ITEM NO.
5.25"	Stir	-	White	5000 (10x500) pcs/case	KE-C9450W
5.25"	Stir	-	Black/White Spiral	5000 (10x500) pcs/case	KE-C9451
5.25"	Stir	-	Red/White Spiral	5000 (10x500) pcs/case	KE-C9452
7.75"	Jumbo	Paper	White	2000 (4x500) pcs/case	KE-C9300W
7.75"	Jumbo	-	White	2000 (4x500) pcs/case	KE-C9400W
10.25"	Jumbo	Paper	White	1200 (4x300) pcs/case	KE-C9305W
7.75"	Giant	Paper	White	2000 (4x500) pcs/case	KE-C9330W
9"	Giant	Paper	White	1200 (4x300) pcs/case	KE-C9340W
9"	Giant	Paper	Black/White Spiral	1200 (4x300) pcs/case	KE-C9341
9"	Giant	Paper	Blue/White Spiral	1200 (4x300) pcs/case	KE-C9342
9"	Giant	Paper	Red/White Spiral	1200 (4x300) pcs/case	KE-C9343
10.25"	Giant	Paper	White	1200 (4x300) pcs/case	KE-C9335W
10.25"	Giant	Paper	Black/White Spiral	1200 (4x300) pcs/case	KE-C9336
10.25"	Giant	Paper	Blue/White Spiral	1200 (4x300) pcs/case	KE-C9337
10.25"	Giant	Paper	Red/White Spiral	1200 (4x300) pcs/case	KE-C9338



## Eco-Friendly PLA Straws



LENGTH (in)	Size	WRAPPER	COLOR(S)	CASE QTY	ITEM NO.
7.75 "	Jumbo	Paper	Clear	2000 (4x500) pcs/case	KE-C9210
7.75 "	Jumbo	Paper	Clear	2000 (4x500) pcs/case	KE-C9215
9.5 "	Jumbo	Paper	Clear	4800 (16x300) pcs/case	KE-C9200
9.5 "	Jumbo	Paper	Green	4800 (16x300) pcs/case	KE-C9200 (Green)
9.5 "	Jumbo	Paper	Red	4800 (16x300) pcs/case	KE-C9200 (Red)
9"	Giant	Paper	Clear	2500 (5x500) pcs/case	KE-C9230
9"	Giant	Paper	Green	2500 (5x500) pcs/case	KE-C9230 (Green)
10.25 "	Giant	Paper	Clear	1200 (4x300) pcs/case	KE-C9235
9"	Colossal	Paper	Clear	1600 (16x100) pcs/case	KE-C9260



# ECO-FRIENDLY PAPER FOOD CONTAINERS & LIDS

Karat Earth® eco-friendly food containers are made from renewable resources and feature an interior PLA lining to help protect against condensation and heat. These containers are designed to hold hot or cold foods and are perfect for side dishes, pastas, ice cream and more! Choose between white or our "One Earth" stock print.

## ✓ key features

- Made from renewable resources
- BPI®, Cedar Grove®, and CMA certified
- Compostable in commercial facilities
- PLA lined
- Used with hot and cold food



## Eco-Friendly Paper Food Containers - White



SIZE	RIM DIA. (mm)	CASE QTY	ITEM NO.
4 oz	75.3	1000/case	KE-KDP4W
8 oz	90.8	1000/case	KE-KDP8W
12 oz	114.6	500/case	KE-KDP12W
16 oz	114.6	500/case	KE-KDP16W

## PLA Food Container Lids for Paper Food Containers



DIA. (mm)	FITS (oz)	CASE QTY	ITEM NO.
90.8	8	1000/case	KE-KDL90
114.6	12 - 16	500/case	KE-KDL114

## Eco-Friendly Paper Food Containers - "One Earth" Stock Print



SIZE	RIM DIA. (mm)	CASE QTY	ITEM NO.
4 oz	75.3	1000/case	KE-KDP4
8 oz	90.8	1000/case	KE-KDP8
12 oz	114.6	500/case	KE-KDP12
16 oz	114.6	500/case	KE-KDP16



# ECO-FRIENDLY PLA HINGED CONTAINERS

Karat Earth® PLA hinged containers will secure your to-go orders and help make a positive impact on the environment. These eco-friendly hinged containers are made out of PLA which is a renewable resource that can be composted back into the earth. Karat Earth hinged containers are available in multiple sizes allowing customers to take any meal to-go.



## ✓ key features

- One Compartment
- Made from renewable resources
- Compostable in commercial facilities

## PLA Hinged Containers



SIZE	CASE QTY	ITEM NO.
6" x 6"	500/case	KE-HC66PLA-1C
8" x 8"	250/case	KE-HC88PLA-1C
9" x 5"	250/case	KE-HC95PLA-1C
9" x 9"	200/case	KE-HC99PLA-1C

# ECO-FRIENDLY PLA SALAD BOWLS & LID

Karat Earth® PLA Salad Bowls are available in multiple sizes to give customers options when it comes to carry out. PLA is a renewable resource that can be composted back into the earth leaving a positive impact on the environment. These eco-friendly salad bowls are not only great for salad but poké, pastas, fruit, and more!



## ✓ key features

- Lid fits all sizes
- Tightly Seals
- Made from renewable resources
- Compostable in commercial facilities

## PLA Salad Bowls



SIZE	CASE QTY	ITEM NO.
18 oz	300/case	KE-BR18-PLA
24 oz	300/case	KE-BR24-PLA
32 oz	300/case	KE-BR32-PLA

## PLA Dome Lid for PLA Salad Bowls



FITS	CASE QTY	ITEM NO.
18 - 32 oz	300/case	KE-BRL178-PLA

## ECO-FRIENDLY PLA PORTION CUPS & LIDS

Karat Earth® PLA portion cups and lids are made from renewable resources that can be composted back into the earth. PLA is a clear, durable and shatter-proof material comparable to plastic allowing consumers to make an easy switch to an eco-friendly alternative. Lids fit securely making them leak and spill proof perfect for takeout orders, dressings, condiments and more.

### ✓ key features

- PLA plastic
- Made from renewable resources
- Compostable in commercial facilities
- Durable and shatter-proof
- Comes with matching lid



### PLA Portion Cups



SIZE	DIA. (mm)	CASE QTY	ITEM NO.
2 oz	60	2000/case	KE-P200-PLA
4 oz	73	2000/case	KE-P400-PLA

### PLA Flat Lids for PLA Portion Cups



DIA. (mm)	FITS	CASE QTY	ITEM NO.
60	2 oz	2000/case	KE-PL200-PLA
73	4 oz	2000/case	KE-PL400-PLA

## BAGASSE CONTAINERS & DINNERWARE

Karat Earth® bagasse containers and dinnerware are great for holding all of your delicious foods, including hot and cold items. The containers are made with bagasse, which consists of fibers left over from the sugar extraction process of sugarcane. These fibers are strong, durable, and a great source of sustainable material for food packaging. BPI® Certified hinged containers, plates, and bowls are all available!

### ✓ key features

- Made from renewable resources
- Durable, sturdy, and microwavable
- Select items are BPI® certified
- Compostable in commercial facilities
- Various sizes and designs available



# BAGASSE CONTAINERS & DINNERWARE

## Compostable Bagasse - Bowl



SIZE	CASE QTY	ITEM NO.
12 oz round	1000/case	KE-BBR12-1C
24 oz wide	800/case	KE-BBW24
32 oz wide	500/case	KE-BBW32

## Compostable Bagasse - Rice/Salad Bowls



SIZE	CASE QTY	ITEM NO.
8 oz round	1000/case	KE-BRB08
12 oz round	1000/case	KE-BRB12
16 oz round	1000/case	KE-BRB16
32 oz round	500/case	KE-BRB32

## Compostable Bagasse - Plates



### 1 Compartment - Round

SIZE	CASE QTY	ITEM NO.
6"	1000/case	KE-BPR06-1C
7"	1000/case	KE-BPR07-1C
9"	500/case	KE-BPR09-1C
10"	500/case	KE-BPR10-1C



### 1 Compartment - Oval

SIZE	CASE QTY	ITEM NO.
10" x 8"	500/case	KE-BP0108-1C*
12.5" x 10"	500/case	KE-BP012510-1C

\*NOT BPI® certified compostable.



### 3 Compartments - Round

SIZE	CASE QTY	ITEM NO.
9"	500/case	KE-BPR09-3C
10"	500/case	KE-BPR10-3C

## Compostable Bagasse - Containers



### 1 Compartment

SIZE	CASE QTY	ITEM NO.
6" x 6"	500/case	KE-BHC66-1C
8" x 8"	200/case	KE-BHC88-1C
9" x 6"	200/case	KE-BHC96-1C
9" x 9"	200/case	KE-BHC99-1C



### 3 Compartments

SIZE	CASE QTY	ITEM NO.
8" x 8"	200/case	KE-BHC88-3C
9" x 9"	200/case	KE-BHC99-3C

## PET Dome Lid for Bagasse Plates



SIZE	FITS	CASE QTY	ITEM NO.
9"	KE-BPR09-1C	200/case	FP-KDL228-PET

## PET Dome Lid for Bagasse Bowls



FITS	CASE QTY	ITEM NO.
24/32 oz Wide Bowl	200/case	FP-KDL211-PET

## Compostable Bagasse - Tray



### 5 Compartments

SIZE	CASE QTY	ITEM NO.
10" x 8"	500/case	KE-BT108-5C



# ECO-FRIENDLY UTENSILS

Karat Earth® eco-friendly utensils are great for hot and cold foods. Karat Earth utensils are made from bio-based and PLA materials making them a sturdy eco-friendly option when it comes to cutlery. These utensils are compostable in a commercial facility and make a positive impact on the environment.

## ✓ key features

- PLA and Bio-based material
- Select items are BPI® certified
- Made from renewable resources
- Compostable in commercial facilities
- Various colors available



## PLA Utensils - Medium-Heavy Weight



COLOR	TYPE	CASE QTY	ITEM NO.
Natural	Fork	1000pcs/case - BULK	KE-U4200 (Natural)
Natural	Knife	1000pcs/case - BULK	KE-U4201 (Natural)
Natural	Tea Spoon	1000pcs/case - BULK	KE-U4203 (Natural)

\*Not recommended for temperatures over 76°F

## PLA Utensils - Heavy Weight



COLOR	TYPE	CASE QTY	ITEM NO.
Natural	Fork	100pcs/bag, 10bags/case	KE-U4510 (Natural)
Natural	Knife	100pcs/bag, 10bags/case	KE-U4511 (Natural)
Natural	Tea Spoon	100pcs/bag, 10bags/case	KE-U4513 (Natural)

\*Not recommended for temperatures over 76°F

## Bio-Based Colored Spoons - Heavy Weight



COLOR	TYPE	CASE QTY	ITEM NO.
Red	Spoon	100pcs/bag, 10bags/case	KE-U2300 (Red)
Orange	Spoon	100pcs/bag, 10bags/case	KE-U2300 (Orange)
Green	Spoon	100pcs/bag, 10bags/case	KE-U2300 (Green)
Teal Blue	Spoon	100pcs/bag, 10bags/case	KE-U2300 (Blue)
Lavender Purple	Spoon	100pcs/bag, 10bags/case	KE-U2300 (Purple)
Pink	Spoon	100pcs/bag, 10bags/case	KE-U2300 (Pink)
Mixed	Spoon	100pcs/bag, 10bags/case	KE-U2300 (Rainbow)*

\*Rainbow (pink/green/blue/orange/red) - 2 bags per color

## Bio-Based Natural Utensils - Heavy Weight



COLOR	TYPE	CASE QTY	ITEM NO.
Natural	Fork	100pcs/bag, 10bags/case	KE-U2020
Natural	Knife	100pcs/bag, 10bags/case	KE-U2021
Natural	Soup Spoon	100pcs/bag, 10bags/case	KE-U2022
Natural	Tea Spoon	100pcs/bag, 10bags/case	KE-U2023

## Bio-Based Black Utensils - Heavy Weight



COLOR	TYPE	CASE QTY	ITEM NO.
Black	Fork	100pcs/bag, 10bags/case	KE-U2020B
Black	Knife	100pcs/bag, 10bags/case	KE-U2021B
Black	Soup Spoon	100pcs/bag, 10bags/case	KE-U2022B
Black	Tea Spoon	100pcs/bag, 10bags/case	KE-U2023B

## Wrapped Bio-Based Natural Utensils - Heavy Weight



COLOR	TYPE	CASE QTY	ITEM NO.
Natural	Fork	100pcs/bag, 10bags/case	KE-U2030
Natural	Knife	100pcs/bag, 10bags/case	KE-U2031
Natural	Tea Spoon	100pcs/bag, 10bags/case	KE-U2033





With fast turnaround times and high-quality printing, you can easily advertise your business by letting your brand be the next conversation starter. Customize all your foodservice products by printing your logo or a design on your paper cups, food containers, and more. Read the details below on our custom printing process and let us help you take your branding and marketing efforts to the next level!

## 💧 Understanding the Different Printing Methods & Colors

### Offset Lithography

- » This is a standard printing process that uses water and/or oil to keep ink out of non printing areas on the plate.
- » The term offset comes from the fact that the ink design is transferred, or offset, onto something else before it goes onto the printed material.
- » Offset Lithography is for paper printing and can print both CMYK and Spot Colors.

VS

### Flexography & Dry Offset

- » Flexography printing works very much like a typical rubber stamp.
- » Flexible plates are rolled in ink and then transferred onto the final piece.
- » This printing method can be used for paper, plastic, or any special substrates.
- » Flexography can only use spot colors.
- » Dry Offset works a lot like Flexography but the ink is transferred or onto another roller before it goes onto the final product.

### CMYK Printing: (4 color process)

- » This term refers to a printing process that uses a mixture of Cyan, Magenta, Yellow, and Black (CMYK) to reproduce a wide range of colors.
- » A wide range of colors can be printed with just 4 color plates, so the number of colors allowable on each design is much higher.
- » PANTONE® (PMS) color codes can be provided as a final color reference, but not all PANTONE® (PMS) colors can be reproduced accurately.

VS

### Spot Color Printing

- » This term refers to a printing process that uses pre-mixed ink for each color. This limits the number of colors but ensures greater color accuracy.
- » The industry standard for spot colors is the PANTONE® Matching System (PMS) and will be used for all spot colors.
- » Due to the use of food-grade inks, not all PANTONE® colors can be achieved.
- » PANTONE® colors will vary on finished products depending on the material and may vary across multiple materials.

# CHOOSE YOUR PRODUCTS

## Custom PET Cold Cups

Material	PET (Polyethylene Terephthalate) Plastic
Available Sizes (oz)	3   5   7   8   9   10   12   12S   16   20   24   32
Available Dessert Cup Size (oz)	5   8   12
Minimum Order Quantity	30,000 pcs/size (10-32 oz & Dessert Cups) 50,000 pcs/size (3-9 oz)
Plate Fees (per color)	\$100/plate/color/size   Max 6 color plates/size
Printing Method	Dry Offset - Coated Spot Colors*
Lead Time	4 - 6 Weeks (10-32 oz)   10 - 12 Weeks (3-9 oz & Dessert Cups)

\*PANTONE® Solid Coated Colors must be used, but not all colors can be achieved.



## Custom PolyPro/PP Cups

Material	PP (Polypropylene) Plastic
Available PP Cup Sizes (cc)	250   360   500   700   740   900
Available PolyPro Cup Sizes (oz)	32
	Please call for available sizes and cup types
Minimum Order Quantity	50,000 pcs/size (250-700 cc) 30,000 pcs/size (32 oz) 25,000 pcs/size (740 & 900 cc)
Plate Fees (per color)	\$100/plate/color/size   Max 4-6 color plates/size
Printing Method	Dry Offset - Coated Spot Colors*
Lead Time	8 - 12 Weeks (PP Cups)   4 - 6 Weeks (PolyPro Cups)

\*PANTONE® Solid Coated Colors must be used, but not all colors can be achieved.



## Custom Paper Cold Cups

Material	Paper   Double-poly
Available Sizes (oz)	9   12   16   20   22   32   44
Minimum Order Quantity	Offset: 30,000 pcs/size   Flexo: 100,000 pcs/size
Plate Fees (per color)	\$100/plate/color/size   Max 4 color plates/size
Printing Method	Offset or Flexography - CMYK or Coated Spot Colors*
Lead Time	10 - 12 Weeks

\*PANTONE® Solid Coated Colors can be used, but not all colors can be achieved.



## Custom Paper Hot Cups

Material	Paper   Poly Lining
Available Sizes (oz)	4   8   10   12   16   20   24
Minimum Order Quantity	Offset : 30,000 pcs/size   UV Offset: 50,000 pcs/size Flexo: 100,000 pcs/size
Plate Fees (per color)	\$100/plate/color/size   Max 4 color plates/size \$200/plate/color/size   Max 4 color plates/size (4 oz)
Printing Method	Offset or Flexography - CMYK or Uncoated Spot Colors*
Lead Time	10 - 12 Weeks

\*PANTONE® Solid Uncoated Colors can be used, but not all colors can be achieved.



*The lead times listed on these pages are intended for informational purposes only and are subject to change.*





## Custom Insulated Paper Hot Cups

Material	Paper   Poly Lining
Available Sizes (oz)	8   12   16   20   Wrapped 10
Minimum Order Quantity	30,000 pcs/size (8-20 oz) 100 cases/size (Wrapped 10 oz)
Plate Fees (per color)	\$100/plate/color/size   Max 4 color plates/size \$200/plate/color/size   Max 4 color plates/size (20 oz & Wrapped 10 oz)
Printing Method	Offset or Flexography - Coated, Uncoated Spot Colors* or CMYK
Lead Time	10 - 12 Weeks

\*PANTONE® Solid Coated/Uncoated Colors can be used, but not all colors can be achieved.



## Custom Ripple Paper Hot Cups

Material	Corrugated Paper in Kraft or White   Poly Lining
Available Sizes (oz)	4   8   10   12   16   20
Minimum Order Quantity	50,000 pcs/size
Plate Fees (per color)	\$200/plate/color/size   Max 6 color plates/size
Printing Method	Flexography - Uncoated Spot Colors*
Lead Time	10 - 12 Weeks

\*PANTONE® Solid Uncoated Colors must be used, but not all colors can be achieved.



## Custom Paper Food Containers

Material	Paper   Double Poly
Available Sizes (oz)	2   4   5   6   8   10   12   16   20   24   28   32 Gourmet: 6   8   10   12   16   32
Minimum Order Quantity	Offset: 30,000 pcs/size (4-32 oz, Gourmet 6/10 oz) 100,000 pcs/case (2 oz) 300,000 pcs/case (Gourmet 8/16/32 oz) Flexo: 100 cases/size (8-20oz)   200 cases/size (24 oz)
Plate Fees (per color)	Offset/UV-Offset: \$100/plate/color/size   Max 4 color plates/size Flexo: \$200/plate/color/size   Max 4 color plates/size
Printing Method	Offset or Flexography - CMYK or Coated Spot Colors* Gourmet: UV-Offset or Flexography - CMYK or Coated Spot Colors*
Lead Time	10 - 12 Weeks

\*PANTONE® Solid Coated Colors can be used, but not all colors can be achieved.



## Custom PP Deli Containers

Material	PP (Polypropylene) Plastic
Available Sizes (oz)	8   12   16   16XL   24   32
Minimum Order Quantity	30,000 pcs/size 500 cases/size (16XL)
Plate Fees (per color)	\$100/plate/color/size   Max 4-6 color plates/size
Printing Method	Dry Offset - Coated Spot Colors*
Lead Time	6 Weeks

\*PANTONE® Solid Coated Colors must be used, but not all colors can be achieved.



*The lead times listed on these pages are intended for informational purposes only and are subject to change.*

# CHOOSE YOUR PRODUCTS

## Custom Eco-Friendly PLA Cold Cups

Material	Ingeo™ PLA Plastic
Available Sizes (oz)	3   9   10   12s   12   16   20   24   32
Minimum Order Quantity	500,000 pcs/size (3 oz) 250,000 pcs/size (9-12s oz) 50,000 pcs/size (12-24 oz) 135,000 pcs/size (32 oz)
Plate Fees (per color)	\$100/plate/color/size   Max 4-6 color plates/size
Printing Method	Dry Offset - Coated Spot Colors*
Lead Time	4 - 6 Weeks (12-24 oz/98 mm)   10 - 12 Weeks (3-10 oz, 32 oz)

\*PANTONE® Solid Coated Colors must be used, but not all colors can be achieved.



## Custom Eco-Friendly Paper Cold Cups

Material	Paper   PLA Lining
Available Sizes (oz)	16   22   32
Minimum Order Quantity	30,000 pcs/size
Plate Fees (per color)	\$100/plate/color/size   Max 4 color plates/size
Printing Method	Offset or Flexography - CMYK or Coated Spot Colors*
Lead Time	10 - 12 Weeks

\*PANTONE® Solid Coated Colors can be used, but not all colors can be achieved.



## Custom Eco-Friendly Paper Hot Cups

Material	Paper   PLA Lining
Available Sizes (oz)	8   10   12   16   20
Minimum Order Quantity	30,000 pcs/size
Plate Fees (per color)	\$100/plate/color/size   Max 4 color plates/size
Printing Method	Offset or Flexography - CMYK or Uncoated Spot Colors*
Lead Time	10 - 12 Weeks

\*PANTONE® Solid Uncoated Colors can be used, but not all colors can be achieved.



## Custom Eco-Friendly Paper Food Containers

Material	Paper   PLA Lining
Available Sizes (oz)	8   12   16
Minimum Order Quantity	30,000 pcs/size
Plate Fees (per color)	\$100/plate/color/size   Max 4 color plates/size
Printing Method	Offset or Flexography - CMYK or Uncoated Spot Colors*
Lead Time	10 - 12 Weeks

\*PANTONE® Solid Uncoated Colors can be used, but not all colors can be achieved.



*The lead times listed on these pages are intended for informational purposes only and are subject to change.*



## Custom Sealing Film For PET & PP Cups

<b>Material</b>	PP or PET (Must specify upon ordering)
<b>Available Sizes (mm) - Diagram</b>	95   98   120
<b>Minimum Order Quantity</b>	PP Film - 60 rolls (10 cases) PET Film - 90 rolls (15 cases)
<b>Plate Fees (per color)</b>	\$100/plate/color/size   Max 6 color plates/size
<b>Printing Method</b>	Screen Print - CMYK + 2 Coated Spot Colors **
<b>Lead Time</b>	10 - 12 Weeks

\*PANTONE® Solid Coated Colors can be used, but not all colors can be achieved.

\*\*Additional fees will apply for spot colors



Finished Seal

## Custom Cup Jackets

<b>Material</b>	Paper in Kraft or White
<b>Available Sizes (oz)</b>	8 oz   10-24 oz
<b>Minimum Order Quantity</b>	30 cases/size
<b>Plate Fees (per color)</b>	\$100/plate/color/size   Max 4 color plates/size
<b>Printing Method</b>	Offset or Flexography - CMYK or Uncoated Spot Colors*
<b>Lead Time</b>	8 - 10 Weeks

\*Any special color will be an additional cost. Not all colors can be achieved.



## Custom Napkins

<b>Material</b>	Paper in White, Kraft, Black, Ivory, Green, and Red
<b>Available Sizes (inch)</b>	9x9   9.5x9.5   10x10   8x6.5   12x13   12.5x8   15x17   17x17
<b>Minimum Order Quantity</b>	15 cases (black 4000) 30 cases (9x9, 17x17, 10x10 White - Premium) 60 cases (10x10 Black - Premium) 100 cases (10x10, 8x6.5, 12x13, 12.5x8, 12x13) 100 cases (9.5x9.5 Black, Ivory, Green, Red)
<b>Plate Fees (per color)</b>	\$100/plate/color/size   Max 2 color plates/size
<b>Printing Method</b>	Flexography - Uncoated Spot Colors*
<b>Lead Time</b>	8 - 10 Weeks   12 Weeks (9.5x9.5)

\*PANTONE® Solid Uncoated Colors must be used, but not all colors can be achieved.



## Custom Paper Shopping Bags

<b>Material</b>	Paper in White or Kraft
<b>Available Sizes (inch)</b>	Balboa (8.1x10.6x4.5), Laguna (9.6x13.4x5.3), Malibu (12.2x14x7.5)
<b>Minimum Order Quantity</b>	100 cases/size
<b>Plate Fees (per color)</b>	\$200/plate/color/size   Max 7 color plates/size (Balboa/Laguna) \$400/plate/color/size   Max 7 color plates/size (Malibu) Please call for details.
<b>Printing Method</b>	Flexography - Uncoated Spot Colors*
<b>Lead Time</b>	10 - 12 Weeks

\*PANTONE® Solid Uncoated Colors must be used, but not all colors can be achieved.



*The lead times listed on these pages are intended for informational purposes only and are subject to change.*

# CHOOSE YOUR PRODUCTS

## Custom Chopsticks Wrappers

<b>Material</b>	Paper in White
<b>Available Sizes (inch)</b>	9
<b>Minimum Order Quantity</b>	100 cases/size
<b>Plate Fees (per color)</b>	\$100/plate/color/size   Max 3 color plates/size
<b>Printing Method</b>	Flexography - Uncoated Spot Colors*
<b>Lead Time</b>	10 - 12 Weeks

\*PANTONE® Solid Uncoated Colors must be used, but not all colors can be achieved.

## Custom Fold-To-Go Containers

<b>Material</b>	Paper in White or Kraft
<b>Available Sizes (fl oz)</b>	30   48   54   76   110
<b>Minimum Order Quantity</b>	50,000 pcs/size
<b>Plate Fees (per color)</b>	\$200/plate/color/size   Max 6 color plates/size
<b>Printing Method</b>	Offset or Flexography - CMYK or Uncoated Spot Colors*
<b>Lead Time</b>	10 - 12 Weeks

\*PANTONE® Solid Uncoated Colors can be used, but not all colors can be achieved.

## Custom Food Trays

<b>Material</b>	Paper
<b>Available Sizes (lb)</b>	0.5   1   2   2.5   3   5
<b>Minimum Order Quantity</b>	100,000 pcs/size (30,000 pcs MOQ available with \$150 setup fee/size)
<b>Plate Fees (per color)</b>	\$100/plate/color/size   Max 4 color plates/size
<b>Printing Method</b>	Flexography - Uncoated Spot Colors*
<b>Lead Time</b>	10 - 12 Weeks

\*PANTONE® Solid Uncoated Colors must be used, but not all colors can be achieved.

## Custom Paper Short Buckets

<b>Material</b>	Paper   Double Poly
<b>Available Sizes (oz)</b>	32   48
<b>Minimum Order Quantity</b>	100,000 pcs/size
<b>Plate Fees (per color)</b>	\$200/plate/color/size   Max 4 color plates/size
<b>Printing Method</b>	Flexography - CMYK or Uncoated Spot Colors*
<b>Lead Time</b>	10 - 12 Weeks

\*PANTONE® Solid Uncoated Colors can be used, but not all colors can be achieved.

## Custom Toilet Tissue Roll Wrappers

<b>Material</b>	Paper
<b>Minimum Order Quantity</b>	300 cases/size
<b>Plate Fees (per color)</b>	\$100/plate/color/size   Max 2 color plates/size
<b>Printing Method</b>	Flexography - Uncoated Spot Colors*
<b>Lead Time</b>	10 - 12 Weeks

\*PANTONE® Solid Uncoated Colors must be used, but not all colors can be achieved.

## Custom Deli Wrap/Paper Liner Sheets

<b>Material</b>	Grease resistant Paper in White or Kraft
<b>Available Sizes (inch)</b>	12x12
<b>Minimum Order Quantity</b>	50 cases/size
<b>Plate Fees (per color)</b>	\$200/plate/color/size   Max 4 color plates/size
<b>Printing Method</b>	Flexography - Uncoated Spot Colors*
<b>Lead Time</b>	10 - 12 Weeks

\*PANTONE® Solid Uncoated Colors must be used, but not all colors can be achieved.

## Custom Food Pail Containers

<b>Material</b>	Paper in White(8-32 oz) or Kraft(32 oz only)
<b>Available Sizes (oz)</b>	8   16   26   32
<b>Minimum Order Quantity</b>	Offset: 115 cases/size Flexo: 225 cases/size (8-20 oz)
<b>Plate Fees (per color)</b>	Offset: \$100/plate/color/size   Max 4 color plates/size Flexo: \$200/plate/color/size   Max 4 color plates/size
<b>Printing Method</b>	Offset or Flexography - CMYK or Uncoated Spot Colors*
<b>Lead Time</b>	10 - 12 Weeks

\*PANTONE® Solid Uncoated Colors can be used, but not all colors can be achieved.

## Custom Paper Food Buckets

<b>Material</b>	Paper   Double Poly
<b>Available Sizes (oz)</b>	85   130   170
<b>Minimum Order Quantity</b>	50,000 pcs/size
<b>Plate Fees (per color)</b>	\$100/plate/color/size   Max 4 color plates/size
<b>Printing Method</b>	Offset - CMYK or Coated Spot Colors*
<b>Lead Time</b>	10 - 12 Weeks

\*PANTONE® Solid Coated Colors can be used, but not all colors can be achieved.

## Custom Plastic Bags

<b>Material</b>	Plastic in White or Clear
<b>Available Sizes (cm)</b>	A1(12.5x9.0x31.5), A2(12.5x9.0x39.0), A3(12.5x9.0x48.0), A4(24.5x20.0x48.0)
<b>Minimum Order Quantity</b>	30 cases/size
<b>Plate Fees (per color)</b>	\$100/plate/color/size   Max 3 color plates/size
<b>Printing Method</b>	Gravure - Coated Spot Colors*
<b>Lead Time</b>	10 - 12 Weeks

\*PANTONE® Solid Coated Colors can be used, but not all colors can be achieved.

## Custom Straws/Straw Wrappers/ Thermal Paper Rolls

Please call us for more available items, minimums, lead times, and further details!

*The lead times listed on these pages are intended for informational purposes only and are subject to change.*



# CUSTOM PRINTING ARTWORK REQUIREMENTS

## Software/ File Formats & Requirements



### **.AI, .EPS, or .PDF (Preferred Formats)**

- Shapes and fonts must be outlined
- Artwork elements must be in layers, not merged

### **Images (if any)**

- All images embedded
- Images must be at least 300 dpi or higher
- Images can only be printed on paper products

### **All Text and Fonts**

- Font size must be at least 8 pt
- Font files must be included with submission or outlined

Templates are available for all stock sizes as well as for custom sizes. Feel free to contact a sales representative for a template to get started or let our talented designers work for you.

## Templates/ Lines

### **Colors**

- Define all colors CMYK or PANTONE® Solid Coated/Uncoated Color Code.

### **What if I don't have any of these?**

If your artwork is designed in another program (e.g. Corel Draw), please save it as a high resolution PDF or EPS file.

### **What if I don't have any programs?**

If there is no way to provide us with artwork, we can provide you with in-house design service. Please contact us for further details. Minimal design fees may be applicable.

## Disclaimers

### **Artwork**

Clients take full responsibility in obtaining the copyrights of the design(s) involved in their custom print order.

### **Color Accuracy**

There is a much higher degree of color accuracy when PANTONE® Color codes are provided. When a PANTONE Color code is provided, finished products are expected to be within 2 PANTONE Colors, either up or down (refer to PANTONE Solid Coated or Uncoated color book). Due to food grade inks, not all PANTONE Color codes can be achieved, and any possible replacement is at the manufacturer's discretion.

### **Ink Odor**

Custom printed products can have a lingering odor as a result of printing with food grade inks. A degree of ink odor should be expected in all custom printed products. Any replacement is at the manufacturer's discretion.

### **Plate Charges**

New custom print orders will be subject to plate fees. Plate fees are charged per color, per item. Re-print orders will not be charged plate fees if the existing plates are still in good condition. Customers will be notified if new plates will be necessary for their re-print orders and subsequently billed for the new plates.

### **Minimum & Lead Times**

All stated minimums apply for each size and/or design ordered. Minimums are subject to change at any time. Due to the nature of custom printed products, there may be a +/- 10% over/under run (variance between amount ordered and amount produced). Lead times are estimated and are not guaranteed.

### **Print Gap**

For plastic cups, a small gap is left between the leading edge of the design so that the design does not overlap. For paper cups and food containers, normal printing procedure is to leave a white area around the bottom rim, as indicated on the template. Clients can make a special request to extend artwork to the bottom rim but this can result in the printed design cracking once the paper is folded. If this does occur, it will leave flakes inside the cups once they are stacked.

# TOTAL CLEAN™

Professional-Grade Cleaners



Total Clean™ offers high-quality, professional-grade cleaning chemicals that will remove some of the toughest stains. Total Clean is the perfect brand for keeping your business clean and sanitary. This line currently features degreaser, oven and grill cleaner, glass cleaner, and more.

## ✓ key features

- Institutional and commercial use
- Powerful cleaners
- Great for kitchens and office break rooms
- Some products can be used as multi-surface cleaners
- SDS available upon request



SKIN  
IRRITATION



CORROSIVE  
TO METALS



### Blue Degreaser



NET WEIGHT	CASE QTY	ITEM NO.
1 gal (3.78L)	4 bottles/case	TC-DG100



### Pink Hand Wash

NET WEIGHT	CASE QTY	ITEM NO.
1 gal (3.78L)	4 bottles/case	TC-HS400



### Glass Cleaner



NET WEIGHT	CASE QTY	ITEM NO.
1 gal (3.78L)	4 bottles/case	TC-GC300



### Premium Dish Wash Soap

NET WEIGHT	CASE QTY	ITEM NO.
1 gal (3.78L)	4 bottles/case	TC-DS200



### Oven & Grill Cleaner



NET WEIGHT	CASE QTY	ITEM NO.
1 gal (3.78L)	4 bottles/case	TC-OC500

Tea Leaves

Syrups

Purées

Powder

Fruit Concentrates

Canned Toppings

Mini Mochi

Boba (Tapioca Pearls)

Jellies

Popping Pearls

Sweeteners

Spices & Seasonings

Wafer Straws & Sticks





Tea has become the most widely consumed beverage in the world. Tea Zone® tea captures the bold aroma of roasted tea leaves in every bag and pouch. The tea is perfect by itself, or let your creativity shine by using it as a base for specialty beverages. Select from several varieties in loose leaf form and gallon size tea bags.

## LOOSE LEAF



**BLACK (RED) TEA**

Item	T1030
Net Weight	8.4 oz/bag (240 g)
Case Qty	25 bags/case



**BLACK TEA  
'VINTAGE BLEND'**

Item	T1032
Net Weight	8.4 oz/bag (240 g)
Case Qty	25 bags/case



**GREEN TEA**

Item	T1020
Net Weight	8.4 oz/bag (240 g)
Case Qty	25 bags/case



**GOLDEN MILK TEA**

Item	T1025
Net Weight	8.4 oz/bag (240 g)
Case Qty	25 bags/case



**OOLONG TEA**

Item	T1033
Net Weight	8.4 oz/bag (240 g)
Case Qty	25 bags/case



**PREMIUM JASMINE  
GREEN TEA**

Item	T1022
Net Weight	8.4 oz/bag (240 g)
Case Qty	25 bags/case



**THAI TEA**

Item	T1035
Net Weight	13 oz/bag (360 g)
Case Qty	30 bags/case



**BUTTERFLY PEA  
FLOWER**

Item	T2050
Net Weight	1 oz/bag (30 g)
Case Qty	10 bags/case

## GALLON SIZE TEA BAGS

**NEW!**



**CLASSIC ASSAM  
BLACK TEA**

Item	T2000
Net Weight	1 oz/pouch (30 g)
Case Qty	50 pouches/case

**NEW!**



**CLASSIC OSMANTHUS  
OOLONG TEA**

Item	T2011
Net Weight	1 oz/pouch (30 g)
Case Qty	50 pouches/case

**NEW!**



**CLASSIC ROASTED  
OOLONG TEA**

Item	T2010
Net Weight	1 oz/pouch (30 g)
Case Qty	50 pouches/case

**NEW!**



**CLASSIC WHITE  
PEACH GREEN TEA**

Item	T2001
Net Weight	1 oz/pouch (30 g)
Case Qty	50 pouches/case

# SYRUPS

Made with real fruit ingredients, Tea Zone® concentrated syrups are perfect for making slushes, smoothies, juices, flavored teas, frozen yogurt, shaved ice, and even cocktails. Whatever the creation, Tea Zone syrups are bound to accentuate the fruit flavors in your beverages.



**BLUEBERRY**

Item	J0900
Volume	64 fl. oz./bottle
Net Weight	5.5 lbs/bottle
Case Qty	6 bottles/case



**CANTALOUPE**

Item	J1025
Volume	64 fl. oz./bottle
Net Weight	5.5 lbs/bottle
Case Qty	6 bottles/case



**GINGER**

Item	J1005
Volume	64 fl. oz./bottle
Net Weight	5.5 lbs/bottle
Case Qty	6 bottles/case



**GRAPE**

Item	J1010
Volume	64 fl. oz./bottle
Net Weight	5.5 lbs/bottle
Case Qty	6 bottles/case



**GRAPEFRUIT**

Item	J1015
Volume	64 fl. oz./bottle
Net Weight	5.5 lbs/bottle
Case Qty	6 bottles/case



**GREEN APPLE**

Item	J1020
Volume	64 fl. oz./bottle
Net Weight	5.5 lbs/bottle
Case Qty	6 bottles/case



**HIBISCUS (ROSELLE)**

Item	J1097
Volume	64 fl. oz./bottle
Net Weight	5.5 lbs/bottle
Case Qty	6 bottles/case



**KIWI**

Item	J1030
Volume	64 fl. oz./bottle
Net Weight	5.5 lbs/bottle
Case Qty	6 bottles/case



**KUMQUAT**

Item	J1055
Volume	64 fl. oz./bottle
Net Weight	5.5 lbs/bottle
Case Qty	6 bottles/case



**LEMON**

Item	J1035
Volume	64 fl. oz./bottle
Net Weight	5.5 lbs/bottle
Case Qty	6 bottles/case



**LYCHEE**

Item	J1040
Volume	64 fl. oz./bottle
Net Weight	5.5 lbs/bottle
Case Qty	6 bottles/case



**MANGO**

Item	J1045
Volume	64 fl. oz./bottle
Net Weight	5.5 lbs/bottle
Case Qty	6 bottles/case



**ORANGE**

Item	J1050
Volume	64 fl. oz./bottle
Net Weight	5.5 lbs/bottle
Case Qty	6 bottles/case



**PASSION FRUIT**

Item	J1060
Volume	64 fl. oz./bottle
Net Weight	5.5 lbs/bottle
Case Qty	6 bottles/case



**PEACH**

Item	J1065
Volume	64 fl. oz./bottle
Net Weight	5.5 lbs/bottle
Case Qty	6 bottles/case



**PINEAPPLE**

Item	J1071
Volume	64 fl. oz./bottle
Net Weight	5.5 lbs/bottle
Case Qty	6 bottles/case

# SYRUPS



**POMEGRANATE**

Item	J1072
Volume	64 fl. oz/bottle
Net Weight	5.5 lbs/bottle
Case Qty	6 bottles/case



**PLUM**

Item	J1075
Volume	64 fl. oz/bottle
Net Weight	5.5 lbs/bottle
Case Qty	6 bottles/case



**RASPBERRY**

Item	J1081
Volume	64 fl. oz/bottle
Net Weight	5.5 lbs/bottle
Case Qty	6 bottles/case



**RED GUAVA**

Item	J1082
Volume	64 fl. oz/bottle
Net Weight	5.5 lbs/bottle
Case Qty	6 bottles/case



**ROSE**

Item	J1098
Volume	64 fl. oz/bottle
Net Weight	5.5 lbs/bottle
Case Qty	6 bottles/case



**STRAWBERRY**

Item	J1090
Volume	64 fl. oz/bottle
Net Weight	5.5 lbs/bottle
Case Qty	6 bottles/case



**TROPICAL**

Item	J1092
Volume	64 fl. oz/bottle
Net Weight	5.5 lbs/bottle
Case Qty	6 bottles/case



**WATERMELON**

Item	J1091
Volume	64 fl. oz/bottle
Net Weight	5.5 lbs/bottle
Case Qty	6 bottles/case



**WINTER MELON**

Item	J1095
Volume	64 fl. oz/bottle
Net Weight	5.5 lbs/bottle
Case Qty	6 bottles/case



**YOGURT**

Item	J1096
Volume	64 fl. oz/bottle
Net Weight	5.5 lbs/bottle
Case Qty	6 bottles/case



**SYRUP PUMP**

Item	J2000
Volume	1 fl. oz/pump
Unit Qty	1 pump

# PURÉES

Tea Zone® Purée is made from premium fruits and natural flavors. Purees are a great way to add texture, flavor, and creativity to any recipe. Tea Zone purées are currently available in 3 fruity flavors that will give any recipe a tasty boost.



**VERY BLUEBERRY**

Item	J4000
Volume	64 fl. oz/bottle
Net Weight	5.5 lbs/bottle
Case Qty	6 bottles/case



**SWEET ORANGE**

Item	J4060
Volume	64 fl. oz/bottle
Net Weight	5.5 lbs/bottle
Case Qty	6 bottles/case



**PASSION FRUIT**

Item	J4065
Volume	64 fl. oz/bottle
Net Weight	5.5 lbs/bottle
Case Qty	6 bottles/case



# POWDERS

Tea Zone® offers flavored powders for your beverages, desserts, and more. Sweeten up your drinks with a delicious flavored powder, make delectable puddings with Tea Zone pudding mix, or create an icy cold treat with MochaBlast or Tropiblend powders. Most items come in new, smaller pack sizes. Check out our large selection today.



## ALMOND

Item	P1000
Net Weight	2.2 lbs/bag (35.2 oz)
Case Qty	10 bags/case



## BANANA

Item	P1001
Net Weight	2.2 lbs/bag (35.2 oz)
Case Qty	10 bags/case



## BLACK SESAME

Item	P1061
Net Weight	2.2 lbs/bag (35.2 oz)
Case Qty	10 bags/case



## CHOCOLATE

Item	P1005
Net Weight	2.2 lbs/bag (35.2 oz)
Case Qty	10 bags/case



## COCONUT

Item	P1015
Net Weight	2.2 lbs/bag (35.2 oz)
Case Qty	10 bags/case



## GRASS JELLY\*

Item	P1063
Net Weight	2.2 lbs/bag (35.2 oz)
Case Qty	10 bags/case



## HONEYDEW

Item	P1030
Net Weight	2.2 lbs/bag (35.2 oz)
Case Qty	10 bags/case



## MANGO

Item	P1037
Net Weight	2.2 lbs/bag (35.2 oz)
Case Qty	10 bags/case



## MATCHA GREEN TEA

Item	P1045
Net Weight	2.2 lbs/bag (35.2 oz)
Case Qty	10 bags/case



## MATCHA GREEN TEA 'GRADE A'

Item	P1046
Net Weight	2.2 lbs/bag (35.2 oz)
Case Qty	10 bags/case

\* FOR USE WITH #B2001 on page 66



## PAPAYA

Item	P1050
Net Weight	2.2 lbs/bag (35.2 oz)
Case Qty	10 bags/case



## RED BEAN

Item	P1060
Net Weight	2.2 lbs/bag (35.2 oz)
Case Qty	10 bags/case



## SEA SALT CREAM

Item	P1044
Net Weight	2.2 lbs/bag (35.2 oz)
Case Qty	10 bags/case



## STRAWBERRY

Item	P1062
Net Weight	2.2 lbs/bag (35.2 oz)
Case Qty	10 bags/case



## TARO

Item	P1065
Net Weight	2.2 lbs/bag (35.2 oz)
Case Qty	10 bags/case



## VANILLA

Item	P1068
Net Weight	2.0 lbs/bag (32 oz)
Case Qty	6 bags/case



## WATERMELON

Item	P1069
Net Weight	2.2 lbs/bag (35.2 oz)
Case Qty	10 bags/case



## WATERMELON BLAST

Item	P1071
Net Weight	2.2 lbs/bag (35.2 oz)
Case Qty	10 bags/case



## YOGURT

Item	P1080
Net Weight	2.2 lbs/bag (35.2 oz)
Case Qty	10 bags/case

MILK TEA



**LAVENDER MILK TEA**

Item | P1036  
 Net Weight | 1.3 lbs/bag (21.1 oz)  
 Case Qty | 12 bags/case



**MILK TEA**

Item | P1040  
 Net Weight | 1.3 lbs/bag (21.1 oz)  
 Case Qty | 12 bags/case



**OKINAWA BROWN SUGAR BLACK TEA**

Item | P1041  
 Net Weight | 2.2 lbs/bag (35.2 oz)  
 Case Qty | 10 bags/case



**HOKKAIDO CREAMY MILK BLACK TEA**

Item | P1042  
 Net Weight | 2.2 lbs/bag (35.2 oz)  
 Case Qty | 10 bags/case



**NAGASAKI HONEY GREEN TEA**

Item | P1043  
 Net Weight | 2.2 lbs/bag (35.2 oz)  
 Case Qty | 10 bags/case

MOCHA BLAST



**MOCHA LATTE**

Item | P6100  
 Net Weight | 2.0 lbs/bag (32 oz)  
 Case Qty | 6 bags/case



**CAFE LATTE**

Item | P6103  
 Net Weight | 2.0 lbs/bag (32 oz)  
 Case Qty | 6 bags/case



**CARAMEL LATTE**

Item | P6115  
 Net Weight | 2.0 lbs/bag (32 oz)  
 Case Qty | 6 bags/case



**VANILLA LATTE**

Item | P6101  
 Net Weight | 2.0 lbs/bag (32 oz)  
 Case Qty | 6 bags/case

TROPIBLEND



**AVOCADO**

Item | P7100  
 Net Weight | 2.0 lbs/bag (32 oz)  
 Case Qty | 6 bags/case



**DURIAN**

Item | P7101  
 Net Weight | 2.0 lbs/bag (32 oz)  
 Case Qty | 6 bags/case



**JACKFRUIT**

Item | P7103  
 Net Weight | 2.0 lbs/bag (32 oz)  
 Case Qty | 6 bags/case

# POWDERS

## PUDDINGS



**CUSTARD  
PUDDING**

**Item** | P3005  
**Net Weight** | 2.2 lbs/bag  
(35.2 oz)  
**Case Qty** | 10 bags/case



**MANGO  
PUDDING**

**Item** | P3020  
**Net Weight** | 2.2 lbs/bag  
(35.2 oz)  
**Case Qty** | 10 bags/case



**MILK  
PUDDING**

**Item** | P3010  
**Net Weight** | 2.2 lbs/bag  
(35.2 oz)  
**Case Qty** | 10 bags/case



**SOY PUDDING**

**Item** | P3050  
**Net Weight** | 2.2 lbs/bag  
(35.2 oz)  
**Case Qty** | 10 bags/case



**TARO  
PUDDING**

**Item** | P3015  
**Net Weight** | 2.2 lbs/bag  
(35.2 oz)  
**Case Qty** | 10 bags/case

## COFFEE



**COFFEE  
CLASSIC**

**Item** | P1010  
**Net Weight** | 1.3 lbs/bag  
(21.1 oz)  
**Case Qty** | 12 bags/case



**COFFEE  
FRENCH ROAST**

**Item** | P1035  
**Net Weight** | 1.3 lbs/bag  
(21.1 oz)  
**Case Qty** | 12 bags/case

## CREAMER



**NON-DAIRY  
CREAMER  
'RICH & CREAMY'**

**Item** | P1020  
**Net Weight** | 2.6 lbs/bag  
(42.3 oz)  
**Case Qty** | 10 bags/case



**NON-DAIRY  
CREAMER**

**Item** | P1022  
**Net Weight** | 2.6 lbs/bag  
(42.3 oz)  
**Case Qty** | 10 bags/case

## BAKERY INGREDIENTS



**WAFFLE POWDER**

**Item** | P1090  
**Net Weight** | 2.2 lbs/bag  
(35.2 oz)  
**Case Qty** | 10 bags/case

## FRUIT CONCENTRATES

Tea Zone® Fruit Concentrates can be used to make smoothies, slushes, flavored teas, and more. These concentrates are made from real fruit ingredients with real chunks of fruit to create delicious drinks in minutes.



**GREEN MANGO**

Item	B2045
Net Weight	7.7 lbs/jar (123.4 oz)
Case Qty	4 jars/case



**PINEAPPLE**

Item	B2035
Net Weight	7.7 lbs/jar (123.4 oz)
Case Qty	4 jars/case

## CANNED TOPPINGS

Canned toppings are an easy way to add something extra to your desserts and drinks. Green and red beans have a sweet and slightly nutty flavor while diced taro is firm and sweetened. Each topping is cooked and ready to serve atop shaved ice, frozen yogurt, slushes, and more!



**GREEN BEAN**

Item	B1005
Net Weight	7.2 lbs/can (116.4 oz)
Case Qty	6 cans/case



**RED BEAN**

Item	B1010
Net Weight	7.2 lbs/can (116.4 oz)
Case Qty	6 cans/case



**OATS**

Item	B1035
Net Weight	6.8 lbs/can (109.3 oz)
Case Qty	6 cans/case



**PREMIUM TARO**

Item	B1040
Net Weight	7 lbs/can (112.8 oz)
Case Qty	6 cans/case

## MINI MOCHI

Tea Zone® mini mochi is crafted from short-grain, glutinous rice. The chewy and soft texture is perfect for a snack, or a topping for shaved ice, frozen yogurt, slushes, and more.



**ORIGINAL**

Item	B3000
Net Weight	0.6 lbs/bag (10.5 oz)
Case Qty	25 bags/case



**RAINBOW**

Item	B3007
Net Weight	0.6 lbs/bag (10.5 oz)
Case Qty	25 bags/case



## BOBA (TAPIOCA PEARLS)

Made from the starch of the cassava root, Tea Zone tapioca pearls, also known as boba, are the perfect add-ons for milk tea and many other beverages. When perfectly prepared, boba is sweet, chewy, and translucent. Find our Tea Zone tapioca in two sizes: regular (1/4" dia. uncooked) and mini (1/8" dia. uncooked), and choose from our black or white boba.



ORIGINAL TAPIOCA PEARLS (BOBA)

Item	A1000
Net Weight	6 lbs/bag (96 oz)
Case Qty	6 bags/case



CHEWY TAPIOCA PEARLS (BOBA)

Item	A2000
Net Weight	6 lbs/bag (96 oz)
Case Qty	6 bags/case



MINI TAPIOCA PEARLS (BOBA)

Item	A1010
Net Weight	6 lbs/bag (96 oz)
Case Qty	6 bags/case



WHITE TAPIOCA PEARLS (BOBA)

Item	A2060
Net Weight	6 lbs/bag (96 oz)
Case Qty	6 bags/case



INSTANT 10 TAPIOCA PEARLS (BOBA)

Item	A3000
Net Weight	6 lbs/bag (96 oz)
Case Qty	6 bags/case

## JELLIES

With the added texture and flavor, Tea Zone® Jellies can enhance a drink or dessert. Whether it's delicious grass jelly in milk tea, colorful assorted yogo jelly in fruit tea, or mango jelly atop frozen yogurt. Jellies are sure to sweeten and add character to any beverage or dessert! Choose from various flavors.



ALOE VERA WITH HONEY

Item	B2031
Net Weight	6.6 lbs/can (105.8 oz)
Case Qty	6 cans/case



ASSORTED YOGO

Item	B2020
Net Weight	8.4 lbs/jar (135.8 oz)
Case Qty	4 jars/case



COFFEE

Item	B2025
Net Weight	7.2 lbs/jar (116.4 oz)
Case Qty	4 jars/case



GREEN APPLE COCONUT

Item	B2006
Net Weight	8.8 lbs/jar (141 oz)
Case Qty	4 jars/case



LYCHEE COCONUT

Item	B2005
Net Weight	8.8 lbs/jar (141 oz)
Case Qty	4 jars/case



MANGO

Item	B2015
Net Weight	7 lbs/jar (112.8 oz)
Case Qty	4 jars/case



MANGO COCONUT

Item	B2008
Net Weight	8.8 lbs/jar (141 oz)
Case Qty	4 jars/case



PASSION FRUIT COCONUT

Item	B2007
Net Weight	8.8 lbs/jar (141 oz)
Case Qty	4 jars/case



STRAWBERRY COCONUT

Item	B2009
Net Weight	8.8 lbs/jar (141 oz)
Case Qty	4 jars/case



GRASS JELLY (LIQUID)\*

Item	B2001
Volume	27 fl. oz/can
Net Weight	1.8 lbs/can
Case Qty	12 cans/case

\*FOR USE WITH GRASS JELLY POWDER (#P1063 - Page 62)





# POPPING PEARLS

Tea Zone® popping pearls, also known as “popping boba” or “bursting boba”, are a simple way to add some fun and flavor to a drink or dessert. Unleash your creative culinary skills and try adding them to a salad or other savory dishes. With no preparation or cooking required, the 3/8” diameter popping pearl can be served straight from the jar. Take a bite into Tea Zone popping pearls and discover a delicious burst of 16 fun flavors.



**BLUEBERRY**

Item | B2056  
 Net Weight | 7 lbs/jar (112.8 oz)  
 Case Qty | 4 jars/case



**CANTALOUPE**

Item | B2058  
 Net Weight | 7 lbs/jar (112.8 oz)  
 Case Qty | 4 jars/case



**CHERRY**

Item | B2059  
 Net Weight | 7 lbs/jar (112.8 oz)  
 Case Qty | 4 jars/case



**GREEN APPLE**

Item | B2060  
 Net Weight | 7 lbs/jar (112.8 oz)  
 Case Qty | 4 jars/case



**KIWI**

Item | B2057  
 Net Weight | 7 lbs/jar (112.8 oz)  
 Case Qty | 4 jars/case

**NEW!**



**LEMON**

Item | B2064  
 Net Weight | 7 lbs/jar (112.8 oz)  
 Case Qty | 4 jars/case



**LYCHEE**

Item | B2050  
 Net Weight | 7 lbs/jar (112.8 oz)  
 Case Qty | 4 jars/case



**MANGO**

Item | B2051  
 Net Weight | 7 lbs/jar (112.8 oz)  
 Case Qty | 4 jars/case



**ORANGE**

Item | B2052  
 Net Weight | 7 lbs/jar (112.8 oz)  
 Case Qty | 4 jars/case



**PASSION FRUIT**

Item | B2055  
 Net Weight | 7 lbs/jar (112.8 oz)  
 Case Qty | 4 jars/case



**PEACH**

Item | B2061  
 Net Weight | 7 lbs/jar (112.8 oz)  
 Case Qty | 4 jars/case



**POMEGRANATE**

Item | B2062  
 Net Weight | 7 lbs/jar (112.8 oz)  
 Case Qty | 4 jars/case

**NEW!**



**ROSE**

Item | B2068  
 Net Weight | 7 lbs/jar (112.8 oz)  
 Case Qty | 4 jars/case

**NEW!**



**RAINBOW**

Item | B2070  
 Net Weight | 6.8 lbs/jar (109.3 oz)  
 Case Qty | 4 jars/case



**STRAWBERRY**

Item | B2053  
 Net Weight | 7 lbs/jar (112.8 oz)  
 Case Qty | 4 jars/case



**YOGURT**

Item | B2054  
 Net Weight | 7 lbs/jar (112.8 oz)  
 Case Qty | 4 jars/case



# SWEETENERS

Tea Zone® offers a variety of sweeteners; choose between Longan Honey, Fructose or Dark Brown Sugar syrup perfect for sweetening drinks, boba and desserts. Or stock up and save on our sugars, and/or fructose by buying in bulk. Great for baking or sweetening beverages.



**ORIGINAL  
LONGAN HONEY**

Item	S1016
Volume	73.4 fl. oz/bottle
Net Weight	6.6 lbs/bottle
Case Qty	10 bottles/case



**LONGAN HONEY  
(NEW & IMPROVED)**

Item	S1015
Volume	73.4 fl. oz/bottle
Net Weight	6.6 lbs/bottle
Case Qty	10 bottles/case



**FRUCTOSE**

Item	S1010
Volume	614.7 fl. oz/drum
Net Weight	55.1 lbs/drum
Unit Qty	1 drum



**FRUCTOSE**

Item	S1013
Volume	123 fl. oz/bottle
Net Weight	11 lbs/bottle
Unit Qty	1 bottle



**FRUCTOSE PUMP**

For Tea Zone  
11 lbs Fructose (S1013)

Item	S2000
Volume	1 fl. oz/pump
Unit Qty	1 pump



**CANE SUGAR  
SYRUP\***

Item	S1001
Volume	128.4 fl. oz/bottle
Net Weight	11 lbs/bottle
Case Qty	4 bottles/case



**DARK BROWN  
SUGAR SYRUP\***

Item	S1006
Volume	125 fl. oz/bottle
Net Weight	11.2 lbs/bottle
Case Qty	4 bottles/case



**PREMIUM HONEY  
LONGAN**

Item	S1050
Volume	71.4 fl. oz/bottle
Net Weight	6.6 lbs/bottle
Case Qty	10 bottles/case



**PREMIUM HONEY  
LYCHEE**

Item	S1051
Volume	71.4 fl. oz/bottle
Net Weight	6.6 lbs/bottle
Case Qty	10 bottles/case



**PREMIUM HONEY  
WILDFLOWER**

Item	S1052
Volume	71.4 fl. oz/bottle
Net Weight	6.6 lbs/bottle
Case Qty	10 bottles/case

\* For syrup pump (#12000) see page 61



**SPRECKELS®  
GRANULATED  
SUGAR**

Item	S1030
Net Weight	50 lbs/bag (800 oz)
Unit Qty	1 bag



**C&H YELLOW D®  
DARK BROWN  
SUGAR**

Item	S1005
Net Weight	50 lbs/bag (800 oz)
Unit Qty	1 bag



**WHOLESOME  
DEMERARA RAW  
CANE SUGAR**

Item	S1021
Net Weight	50 lbs/bag (800 oz)
Unit Qty	1 bag

## SPICES & SEASONINGS

Tea Zone® offers spices and seasonings that enhance the taste of poultry and other meats. Try the seasoned frying powder to make your foods crispy and delectable. For even more flavor, try the meat marinating powder or our savory seasoning powder.



### MARINATING POWDER

Item	P5010
Net Weight	2.2 lbs/bag (35.2 oz)
Case Qty	16 bags/case



### FRYING POWDER

Item	P5000
Net Weight	13.2 lbs/bag (211.6 oz)
Case Qty	5 bags/case



### SEASONING POWDER PEPPER, SALT, & HERBAL SPICES

Item	P5015
Net Weight	2.2 lbs/bag (35.2 oz)
Case Qty	10 bags/case

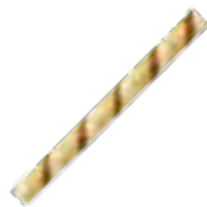
## WAFER STRAWS & STICKS

Tea Zone® wafer straws and sticks are a fun creative way to add crispy sweetness to your desserts and drinks. With their whimsical stripes and fun flavors, you'll be sure to add a delicious and decorative touch to your menu. Our wafer straws come individually wrapped and lined with a rich chocolate ganache that is designed for both hot and cold beverages. Our wafer sticks are currently available in chocolate, cappuccino, and strawberry. Try some today!



### CHOCOLATE WAFER STRAW

Item	B4000
Length	7.50"
Case Qty	10 bags/case (42 pcs/bag)



### CAPPUCCINO WAFER STICK

Item	B4110
Length	5.52"
Case Qty	10 bags/case (70 pcs/bag)



### CHOCOLATE WAFER STICK

Item	B4115
Length	5.52"
Case Qty	10 bags/case (70 pcs/bag)



### STRAWBERRY WAFER STICK

Item	B4175
Length	5.52"
Case Qty	10 bags/case (70 pcs/bag)

## IN DEVELOPMENT

### Loose Tea Leaves and Tea Pouches

- Jasmine Green Tea
- Genmai Green Tea
- Toffee Black Tea
- Rose Pu-erh
- and more!

### Purée

- Lychee
- Piña Colada
- Strawberry Banana
- Mixberry
- and more!

### Others

- Agave
- Agar
- Sago Tapioca
- Sweet Potato
- and more!

If you would like to commit to large quantity purchase for any special item, please feel free to contact our customer service team.



## PARTNERS: 1883 MAISON ROUTIN



1883 strives to be an excellence-inspiring brand. This major French flavoring syrup has been developed with passion for more than 130 years. 1883 prides themselves on superior quality, aromatic authenticity, purity, and intensity.



SYRUPS



SUGAR FREE SYRUPS



SAUCES

## PARTNERS: CAFFE D'VITA



With over 43 years of family-owned integrity and excellent customer service, Caffe D'Vita® manufactures hot, iced, and blended beverage products.

Caffe D'Vita® products are gluten-free, kosher certified, and made in the USA.



ICED CAPPUCCINOS



BLENDED ICE COFFEES



CHAI LATTES



MILKSHAKES

**PARTNERS: BIG TRAIN**



Big Train® is dedicated to delivering easy-prep, downright delicious beverage mixes to menus world-over. They have more than 200 products from blended iced coffee to chai beverage mixes.



BLENDED FRAPPÉS



BLENDED ICE COFFEE



DRAGONFLY FRAPPÉS



CHAI TEA



SMOOTHIE MIX

**PARTNERS: DAVINCI GOURMET**



DaVinci Gourmet® offers a variety of high quality products, including coffee mixes, smoothie mixes, and delicious syrups.



CLASSIC, SUGAR FREE, & NATURAL SYRUPS



CLASSIC & SUGAR FREE SAUCES



SMOOTHIE MIXES



BLENDED ICE BASES

**PARTNERS: OREGON CHAI**



Oregon Chai® strives to use only the finest ingredients for its products. Most of Oregon Chai's concentrates are 90 percent organic.



Partners

ADDITIONAL **GOODS & SERVICES**

## PARTNERS: DOLE/FROSTLINE



Dole® Soft Serve fruit flavors are lactose-free, fatfree, gluten-free, and cholesterol-free. This delicious soft serve is also now vegan in all six fruit flavors.

Frostline® has been sold in foodservice for more than 20 years. Frostline Soft Serve is lactose-free, gluten-free, and low fat.



## PARTNERS: GHIRARDELLI



Established in 1852, Ghirardelli® is America's oldest continuously operating chocolate maker. The company is over 160 years old! Ghirardelli is one of the few American companies that produces chocolate starting from the selection of the cocoa bean and ending with finished products.



HOT COCOAS



FRAPPÉS



SWEET GROUND CHOCOLATE



SAUCES

# MONIN®

Monin® offers a wide range of premium products including syrups, sugar-free syrups, gourmet sauces, and more. The company's mission is to be the brand of choice, providing creative flavor solutions that make its customers successful.



CLASSIC, SUGAR FREE & ORGANIC SYRUPS



PURÉES



SMOOTHIE MIXES



SAUCES

# Torani®

Torani® has been family owned for three generations and has decades of café and restaurant drink innovation. Torani products are crafted to balance in the finished drink, guaranteeing a delicious taste experience.



CLASSIC, SUGAR FREE & SIGNATURE SYRUPS



SAUCES



PURÉES



SMOOTHIE MIXES

# PARTNERS



blendtec®



Hamilton Beach®



MONIN®



PreGel

Torani®







# PRODUCT CATALOG 2019

