



**NEW!**



**BLK2GO Backpack**

[www.scan-go.eu](http://www.scan-go.eu)

**DATA SHEET**

September 2021

**Scan&Go srl**  
Via della Tecnica 34 A/B - 41051  
Castelnuovo Rangone (MO) - Italy  
Cell. +39 3924627285  
[info@scan-go.eu](mailto:info@scan-go.eu)

# BLK2GO Backpack

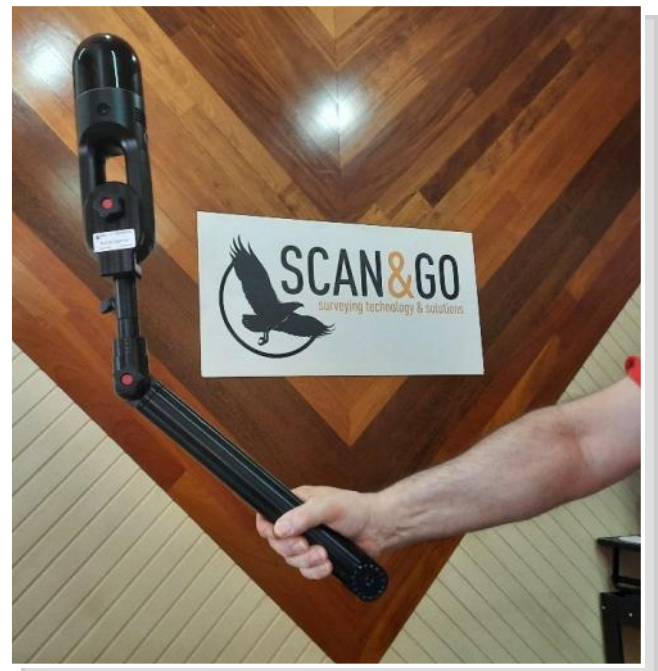


This Backpack is designed to be used with BLK2GO laser scanner comfortably on the operator's shoulders, thus leaving the hands free.

The support (4) is made of aluminum tubes, the inclination can be adjusted by the operator allowing to keep the scanner at different heights,

- (1) the BLK2GO Adapter is equipped with 5/8 converter
- (2) Standard Leica pin with locking knob allows 360° rotation to orient the scanner in any direction.

**Weight (without BLK2GO) 2 Kg**



## COMPONENTS

1. BLK2GO Adapter
2. Standard Leica pin 5/8 "
3. Base for initialization
4. Adjustable support
5. Transport nylon bag

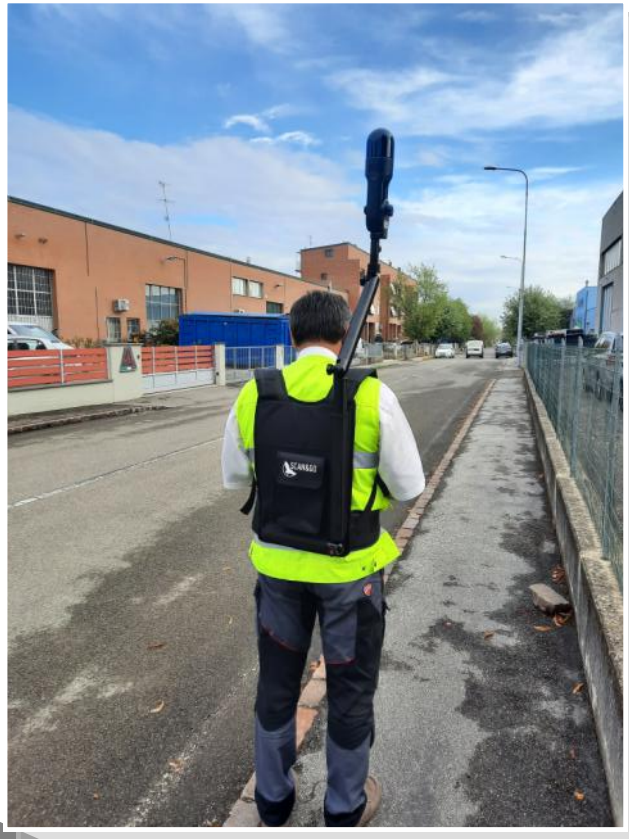
# BLK2GO Backpack

(3) The base with standard Leica pin for initializing of the scanner is included, without the need to disassemble the BLK2GO Adapter from the instrument, this way the operator can start scanning immediately after initialization



Thanks to the quick release (2) the scanner can be easily used by hand in all situations where the Backpack would be bulky or not suitable





NEW surveying technology & solutions



*Made in Italy*