



BA APAC&MEA
Spare parts list

Combination fridge-freezers, bottom freezer
3712

PNC	ELC	Brand	Model	Market
925060324	08	Electrolux	EHE6899SA	AU - NZ
925060333	09	Electrolux	EHE6899BA	AU - NZ

ELECTROLUX THAILAND
1910 ELECTROLUX BUILDING
NEW PETCHBURI RD
BANGKAPI, HUAI KHWANG
BANGKOK, 10310

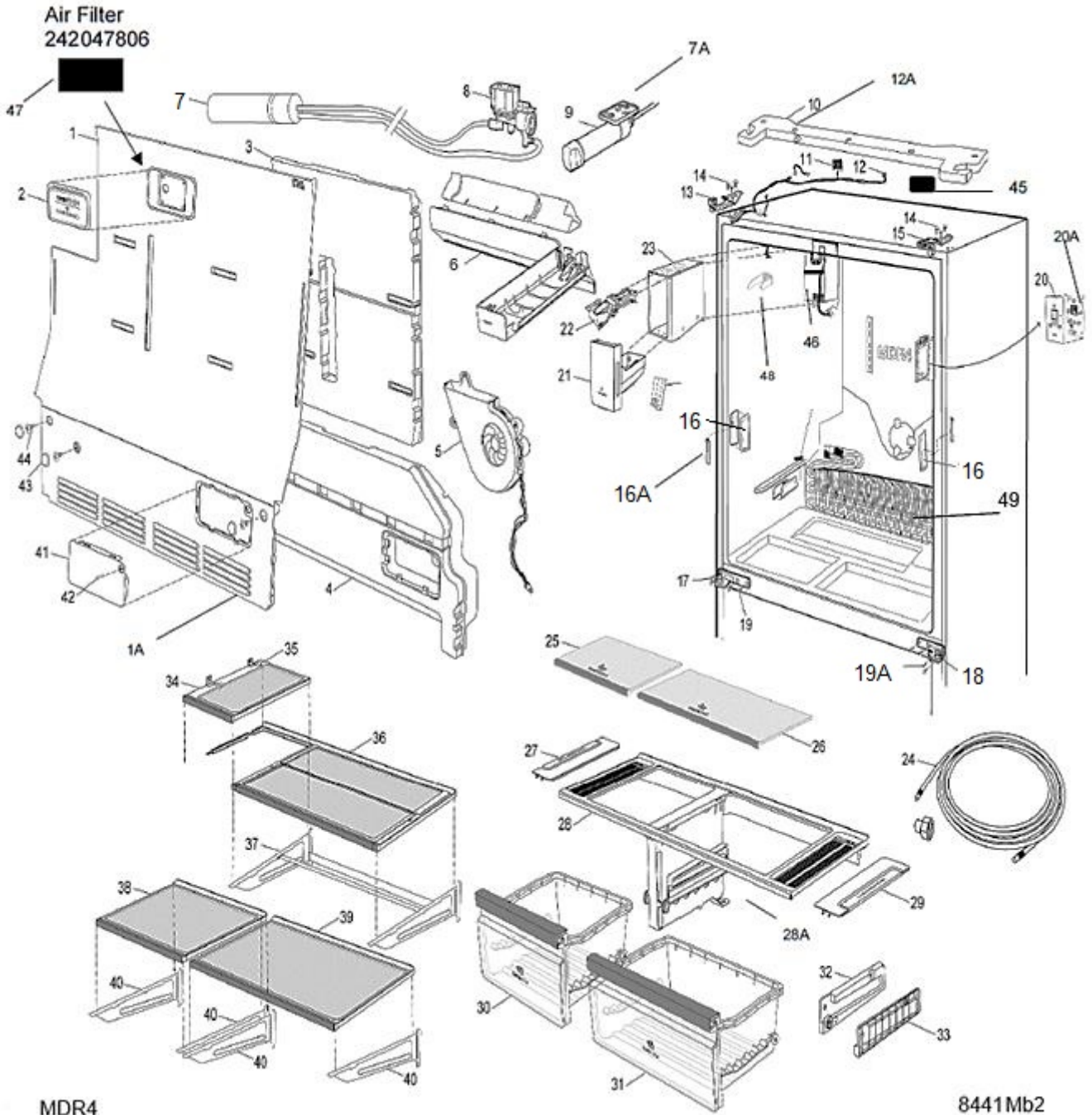
Publication-No.
599856523
2022/04/04
THF

Freestanding fridge-freezers bottom free
no frost

MODEL: EHE6899

INTERNAL & EXTERNAL FRIDGE SECTION

Ex Drawing 8441Mb2



Matrix	PNC	ELC	ProdDate	Model
A	925060324	08	20210518	EHE6899SA
B	925060333	09	20210501	EHE6899BA

Pos	Part No.	Matrix	Description
1	140048345015	A B	Cover, evaporator, assembly, fridge
1A	140040774014	A B	Air vent grid, end piece, fridge, 757.6x206.91mm
2	140050812076	A B	Cover, air filter, silkscreened, 148.2x74.5mm
3	140048331015	A B	Air channel, EPS, 447.5x454.2mm
4	140040775037	A B	Cover, evaporator, fridge
5	140040771010	A B	Fan, assembly, fridge, 1.8W, 1900rpm
6	140050838121	A B	Cover, water tank, silkscreened, 91.7x99mm
7A	140171222049	A B	Manifold, water filter, 2477mm
8	140019837024	A B	Valve, double, 220V, 20W
9	8079467042	A B	Water filter, assembly, 227.84mm
NI	140065658019	A B	Wiring, trimming, upper, 850mm , WIFI
11	140057296026	A B	Pcb, humidity sensor
12	140205243029	A B	Reed switch, door
12A	140072985017	A B	Safety switch, door
13	140040616017	A B	Hinge, upper, right
14	8119494014	A B	Bolt, M5x16 PH
15	140040616041	A B	Hinge, upper, left
16	140088280015	A B	Lens, LED PCB, side, 116.02x50.5mm
16A	140155609039	A B	Led, light, 6500K
17	140040612024	A B	Hinge, lower, left
18	140040612016	A B	Hinge, lower, right
19A	14494124	A B	Screw, 8Gx1/2"
20	140040668075	A B	Interface, UI ASSY
21	140068336209	A B	Ice box, assembly
22	8582432976073	A B	Ice-maker, complete
24	140116497029	A B	Water, supply, installation, set
25	140047727049	A B	Glass cover, compartment, left, 295.7x485mm
26	140047727031	A B	Glass cover, compartment, right, 419.7x185mm
27	140074437033	A B	Membrane, humidity control, 250.4x75.1mm
28	140047702018	A B	Glass shelf, complete, ventilation cover, 804.7x315.6mm
28A	140063095032	A B	Support, divider, Vegetable box, 207.3mm
29	140052731019	A B	Housing, Membrane, humidity control, 267.6x74.7mm
30	140047698133	A B	Drawer, crisper, ASSY LH EL MD36
31	140047692144	A B	Drawer, crisper, ASSY RH EL 36
32	140047719020	A B	Guidance, Vegetable box, left, 275mm
33	140047719012	A B	Guidance, Vegetable box, right opening, 275mm
34	140047713023	A B	Glass shelf, reversing, assembly, 174x365.1mm
35	8119495037	A B	Screw, 4.2x13 PH
36	140047712025	A B	Glass shelf, complete, folding, 635x394.5mm
38	140063186047	A B	Shelf, left, assembly, MD36 WINE RACK F
39	140063184026	A B	Shelf, right, assembly, WHMD36 FOIL
41	140070300011	A B	Cover, window, 168x80.2mm
43	8119716036	A B	Cover, screw

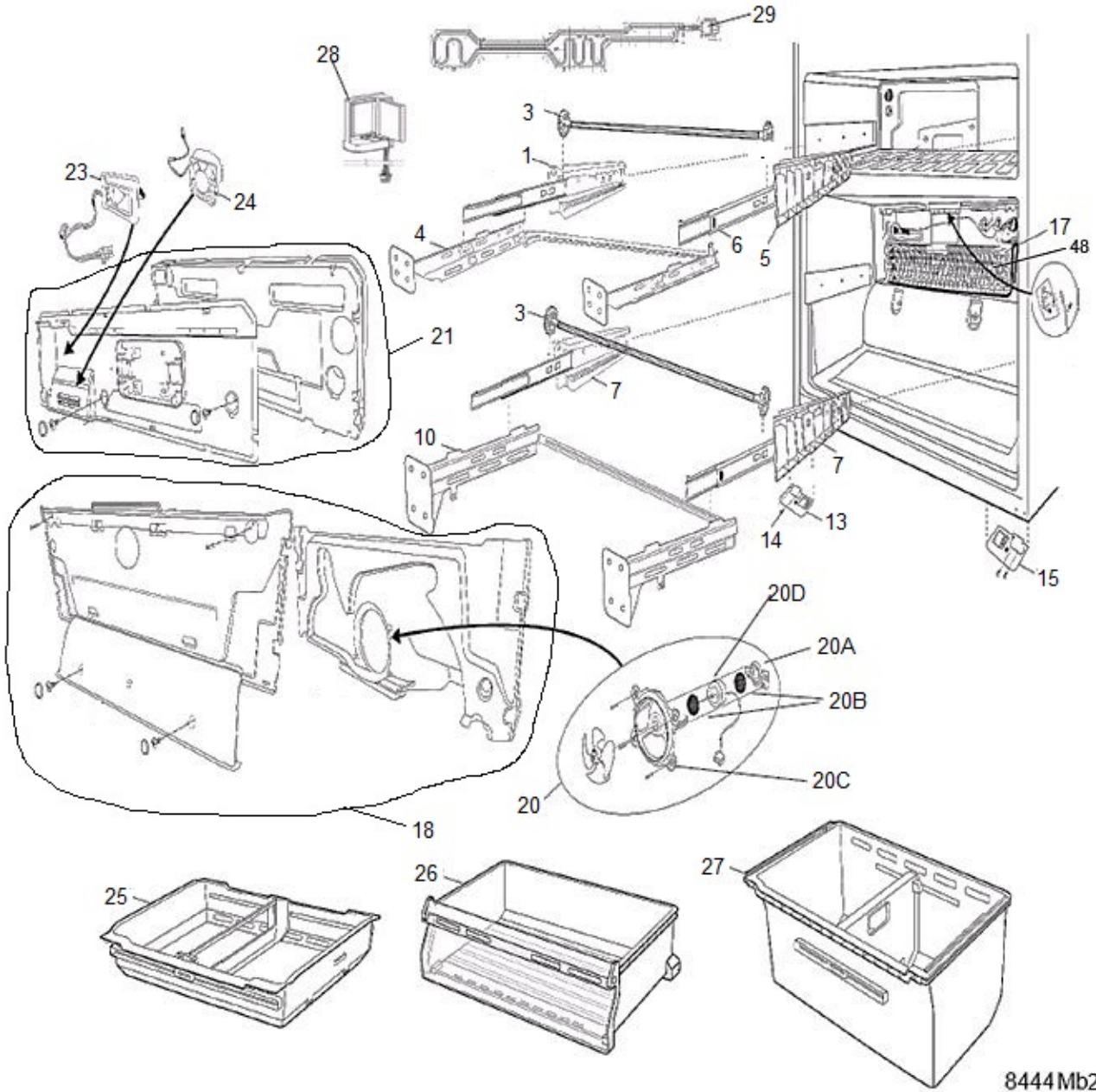
Exploded view no.: P09253094861
P09253094899

Matrix	PNC	ELC	ProdDate	Model
A	925060324	08	20210518	EHE6899SA
B	925060333	09	20210501	EHE6899BA

Pos	Part No.	Matrix	Description
45	982140068581053	A B	Configured electronic,NIUX Wi-Fi,A07491701AS00004299A
46	140070357094	A B	Ventilation,assembly,ice-maker
47	8582420478066	A B	Carbon filter,98X45mm
48	2418290017	A B	Bar,drive,ice-maker
49	140070276039	A B	Evaporator,fridge

MODEL: EHE6899
FREEZER INTERNALS

Ex Drawing 8444Mb2



8444Mb2

Exploded view no.: P09253094862
P09253094903

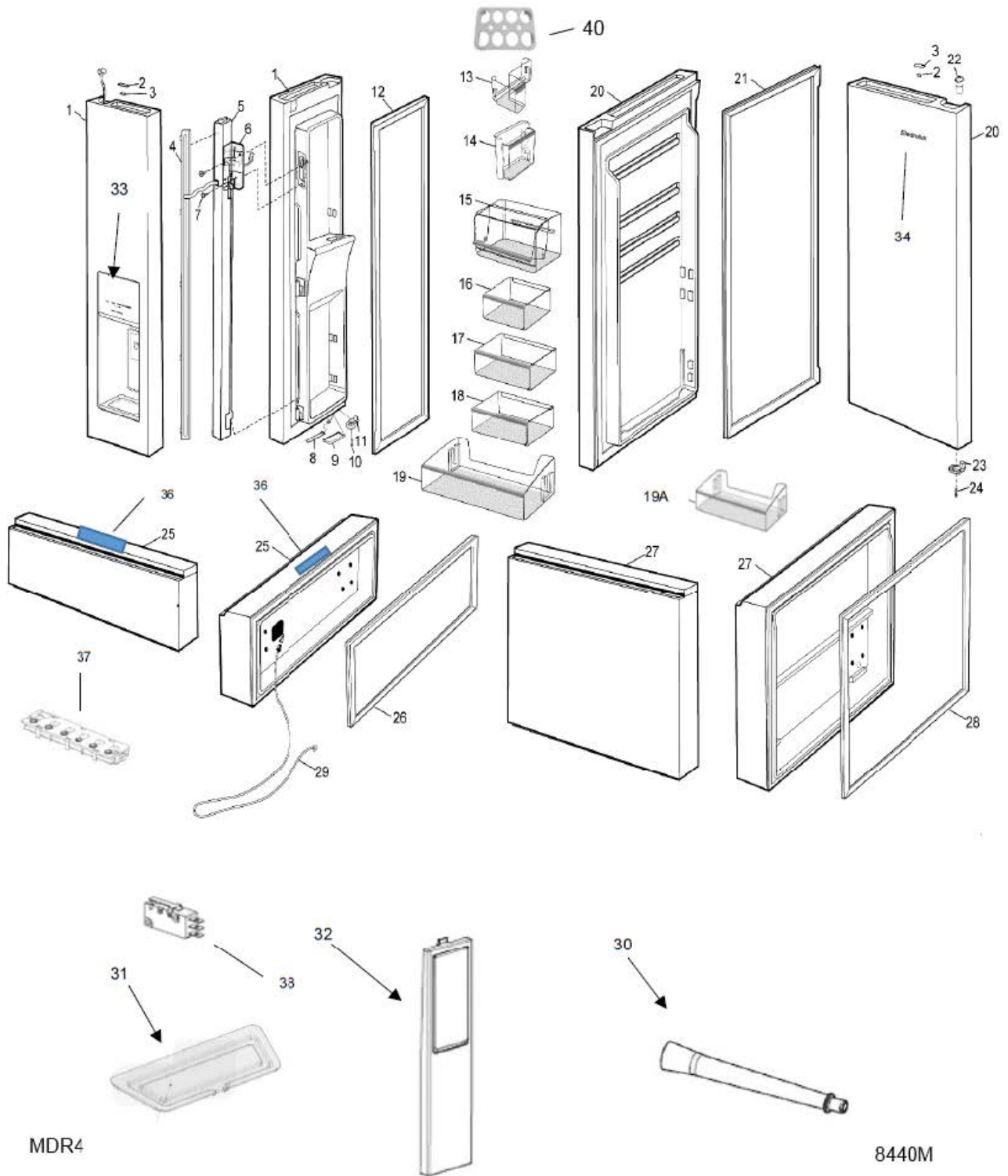
Matrix	PNC	ELC	ProdDate	Model
A	925060324	08	20210518	EHE6899SA
B	925060333	09	20210501	EHE6899BA

Pos	Part No.	Matrix	Description
1C	140040618054	A B	Support, guidance, left, 477mm
3C	140040615035	A B	Shaft, telescopic runner, 720mm
4C	140050832017	A B	Slider, assembly, WBracketVCZLH
4C	140050832025	A B	Guidance rail, Drawer, right, VCZ
5C	140040618062	A B	Support, guidance, right, 477mm
7C	140040624094	A B	Support, guidance, left, 443.5mm
10C	140050830011	A B	Guidance rail, Drawer, left, FZ
10C	140050830029	A B	Guidance rail, Drawer, right, FZ
13C	140040604021	A B	Foot, assembly
15C	140040604013	A B	Foot, assembly
17C	140010582108	A B	Defrost heater, evaporator, fridge, 258W
18	140040653028	A B	Cover, evaporator, assy MD36 L
21C	140040732012	A B	Cover, with, heater, 564x160.8mm
24C	140075940027	A B	Blower, assembly, 1.0W, 2400rpm
25C	140062292010	A B	Drawer, complete, 7820, 744x128.5mm
26C	140040614053	A B	Drawer, complete, Freezer, 296, 770.1x164.9mm
27C	140062256015	A B	Drawer, complete, Freezer, 7820, 726x260.5mm
29C	140040869012	A B	Heater, ducting, air, 20W, 230V
3AC	140025649033	A B	Gear, guidance rail, Drawer, 52.8mm
3BC	140022149029	A B	Bearing, guidance rail, 24mm
48C	140070276047	A B	Evaporator, Freezer
20AC	140021648013	A B	Clip, retainer
20BC	14460489	A B	Grommet, fan, d30mm
20CC	8116996045	A B	Fan blade
20DC	8090692073	A B	Fan motor, Freezer, 2.7W, 2700rpm
N.I.	140055915015	A B	Grommet, fan, Freezer, d27mm
N.I.	140062696012	A B	Cover, Sensor, magnet, 30x20.7mm
N.I.	140070313014	A B	Cover, heating element, plastic, 7820, 70.1x125mm

MODEL: EHE6899

DOOR'S INTERNAL AND EXTERNAL PARTS

Ex Drawing 8440M



Exploded view no.: P09253094878
P09253094913

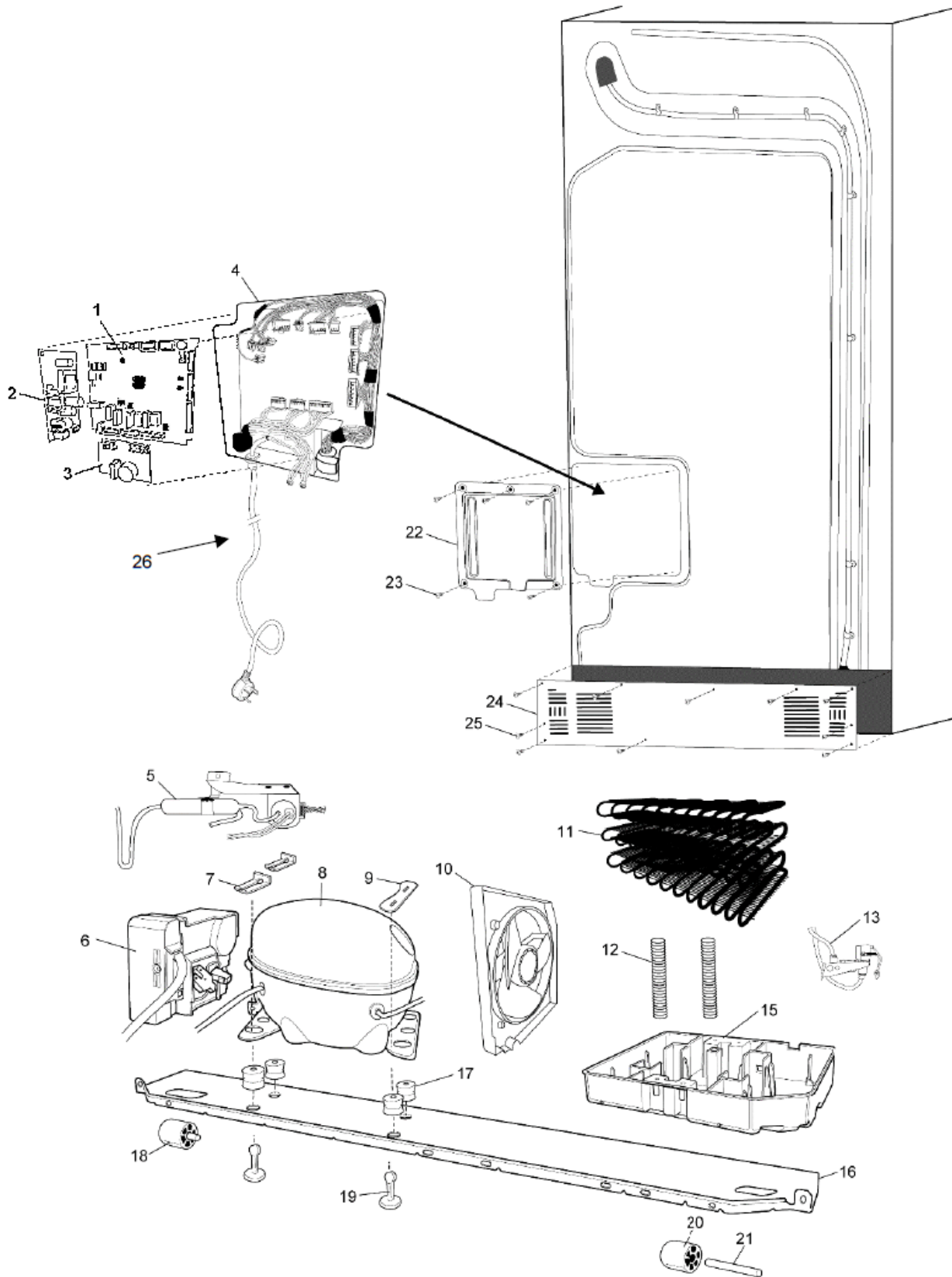
Matrix	PNC	ELC	ProdDate	Model
A	925060324	08	20210518	EHE6899SA
B	925060333	09	20210501	EHE6899BA

Pos	Part No.	Matrix	Description
1	140053545277	- B	Door, spare part, FF-L MD36 BSS SQ AU
1B	140235214347	A -	Fridge door, left, inox
3B	140026775019	A B	Sensor, magnet, door, 15.7x12.7mm
5B	140039879014	A B	Column, fridge door, assembly, 825.4mm
6B	140013762012	A B	Hinge, column, lower
8	140155609039	A B	Led, light, 6500K
9B	140048192011	A B	Lens, LED PCB, Freezer, 105.5x30mm
NI	140050905326	A B	Display, ASSY UI I&W EXT EL
12B	140185614090	A B	Magnetic seal, fridge door, left, 2002B, 315.9x875.5mm
13B	140073366019	A B	Bin, ramp, transparent, SP8008, 242.4x135.3mm
14B	140052666017	A B	Bin, assembly, opening, SP8008, 256, 5x197, 7mm
15B	140045259011	A B	Butter shelf, complete, short, SP8008, 237.6x107.6mm
16B	140073380010	A B	Bin, small, transparent, SP8008, 184x195x90mm
17B	140048536019	A B	Bin, assembly, sliding type, SP8008, 239x192.5mm
18B	140073381018	A B	Bin, medium, transparent, SP8008, 237.7x191.7mm
19B	140073434015	A B	Bottle shelf, complete, transparent, SP8008, 424.7x113mm
20B	140235214354	A -	Fridge door, right, inox
20B	140053545285	- B	Fridge door, right, stainless, MD36
21B	140185614108	A B	Magnetic seal, fridge door, right, S2002B, 498.5x875.5mm
25	140053545293	- B	Door, middle, MD36
25B	140235214321	A -	Freezer door, Drawer, silver, 913x229mm
26B	140123198016	A B	Magnetic seal, Drawer, middle, S2002B, 860.9x188mm
27	140053545301	- B	Freezer door, left, stainless, MD36
27B	140235214339	A -	Freezer door, Drawer, silver, 913x549mm
28B	140123198024	A B	Magnetic seal, Drawer, Freezer, S2002B, 860.9x498.7mm
30B	140124542014	A B	Guide, tube, water distributor, 132.7mm
31B	140051176075	A B	Tray, drip pan, plastic, grey, 185.1x54.9mm
32B	140110776014	A B	Lever, water distributor, assembly, 54.9x210.2mm
33	140050906076	A B	Display, interface, I&W EXT WH MD36
34B	140071298024	A B	Badge, Electrolux, 82.4x75.3mm
36	140050489396	A B	Display, interface, VCZ EXT EL AU SEA MD
37B	140050488042	A B	User interface board, display, PCB, UI VCZ EL AP MD36
38B	2418701039	A B	Switch, dispenser, paddle
40B	140119483018	A B	Eggs container, white, 198.1x155.2mm
19AB	140073370011	A B	Bin, medium, transparent, SP8008, 239.1x106.1mm

MODEL: EHE6899

SYSTEM & REAR OF CABINET

Ex Drawing 8445M



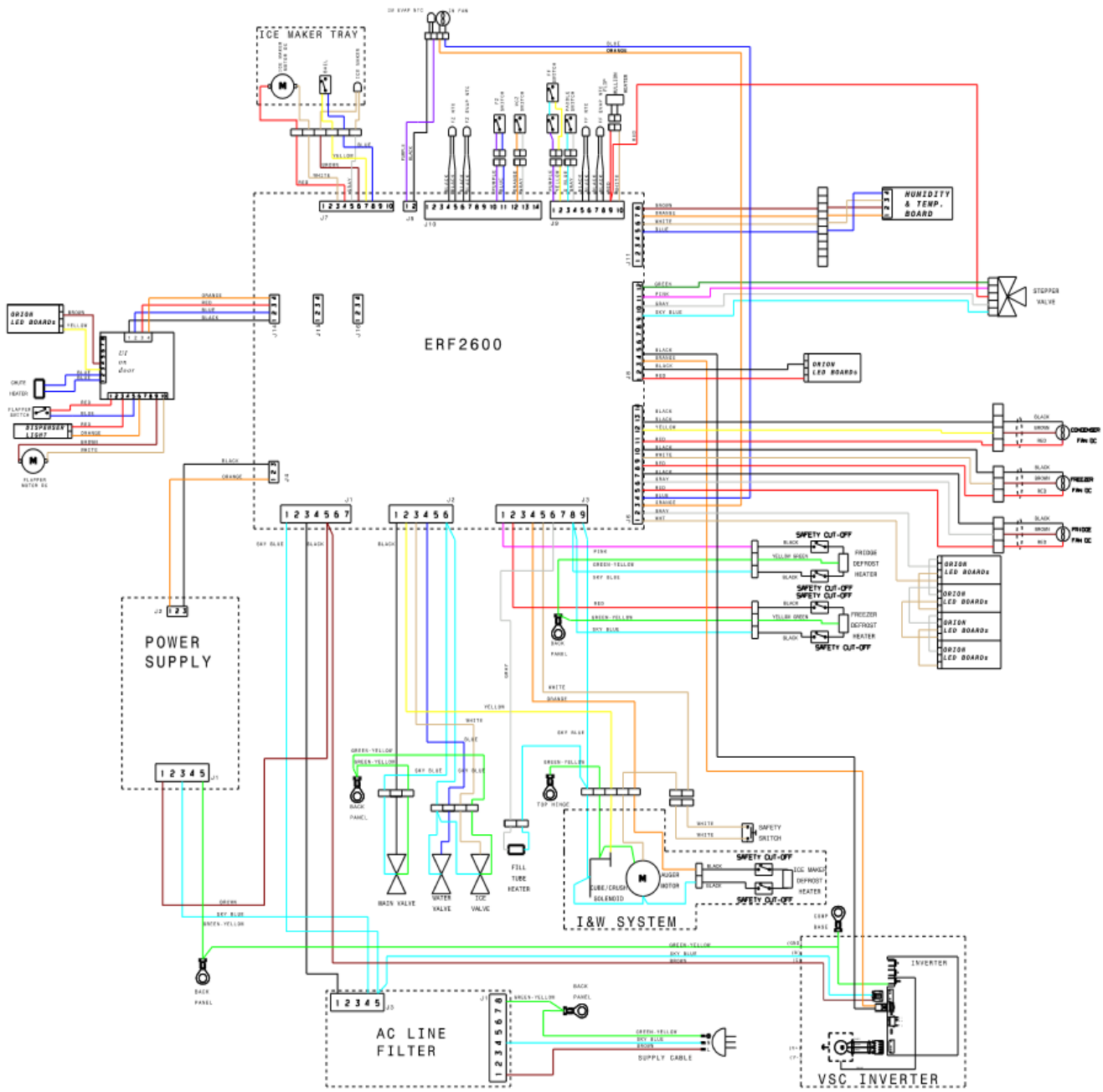
Exploded view no.: P09253094877
P09253094916

Matrix	PNC	ELC	ProdDate	Model
A	925060324	08	20210518	EHE6899SA
B	925060333	09	20210501	EHE6899BA

Pos	Part No.	Matrix	Description
2D	140051730020	A B	Pcb,power supply
3D	140051725046	A B	Pcb,filter,electronic,EMC
4D	140062874015	A B	Connector,power supply,ERF2600, 120mm
5D	140050829013	A B	Step,valve,assembly
6D	140014525095	A B	Pcb,drive,Compressor,EMBRACO VESD11C
7D	140043266026	A B	Fixing bracket,Compressor,42x20mm
8D	140101003014	A B	Compressor,complete,EMBRACO VESD11C
9D	8119986019	A B	Fixing,plate,Compressor,90mm
10D	140056206018	A B	Ventilation,fan,assembly,1100, 1.25W
11D	140040652012	A B	Condenser,DYNAMIC, 304.8x161.9
12D	140023599040	A B	Drain hose,201.8mm
13D	140069266017	A B	Valve,220, PLASTIC FITTING
15D	140040651030	A B	Drain,tray,323x216mm
16D	140026217012	A B	Base,Compressor,assembly,902mm*267.7mm
17D	8119789017	A B	Damper,Compressor,28.6mmx17mm
18D	8116666010	A B	Roller,back,d31.8x24mm
21D	8119983024	A B	Shaft,roller,d6x51.9mm
22D	140126580012	A B	Cover,PCB,assembly,242.9x290.1mm
24D	140040610010	A B	Cover,Compressor,903mm*231mm
26D	140067918148	A B	Power cord,AU
587	973925060324085	A -	Configured electronic, ERF2600_FCT
587D	140074487012	A B	Not configured electronic,ERF2600
587D	973925060333094	- B	Configured electronic, ERF2600_FCT
N.I.	2422201380	A B	Tube,water distributor

DIAGRAMS

COMPLETE DIAGRAM

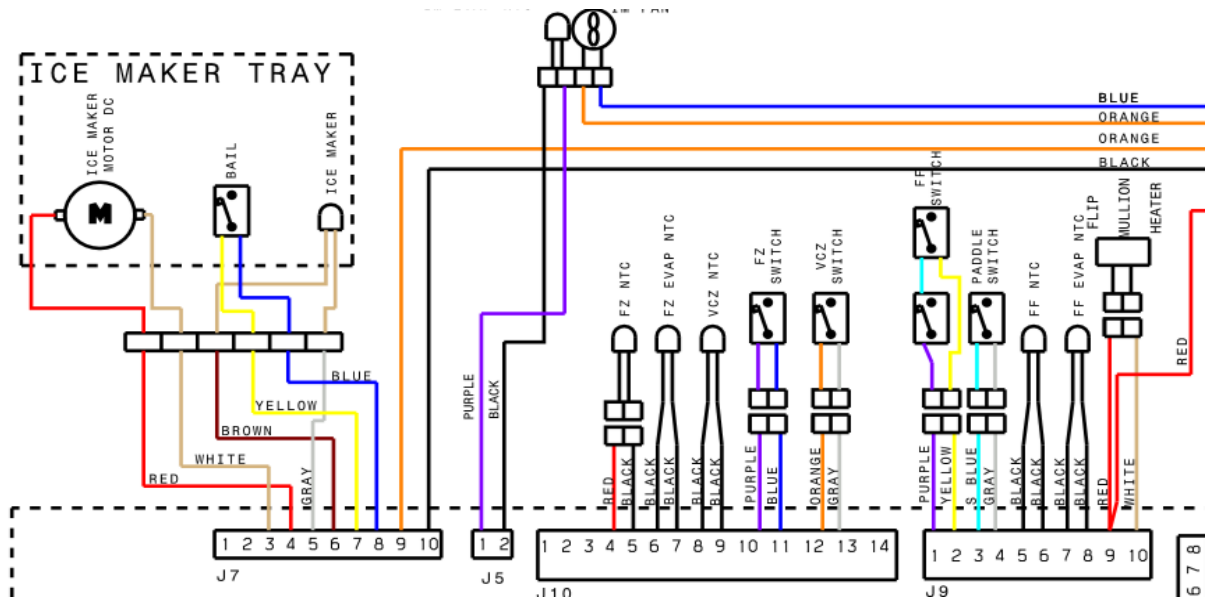


OPTION D - Double Freezer

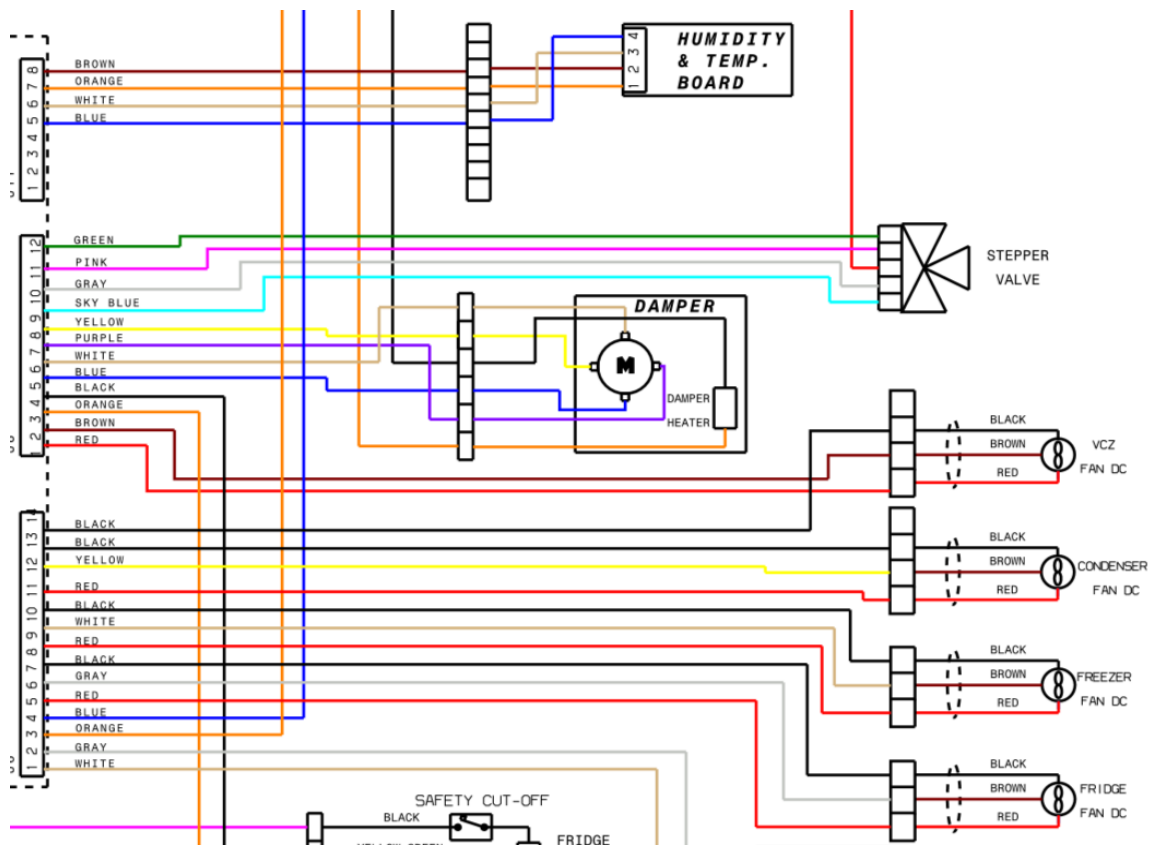
WARNING
 IT IS ILLEGAL FOR PERSONS OTHER THAN LICENSED ELECTRICAL MECHANICS OR PERSONS AUTHORIZED BY LEGISLATION TO WORK ON THE FIXED WIRING OF ANY ELECTRICAL INSTALLATION. PENALTIES FOR CONVICTION ARE SEVERE.

IMPORTANT SAFETY NOTICE
 This diagram has been prepared for use by electrically qualified service technicians. Electrolux cannot be held responsible for the interpretation of its service publications nor for any injury or damage that may occur in connection with their use.

TOP OF PCB



RIGHT SIDE OF PCB



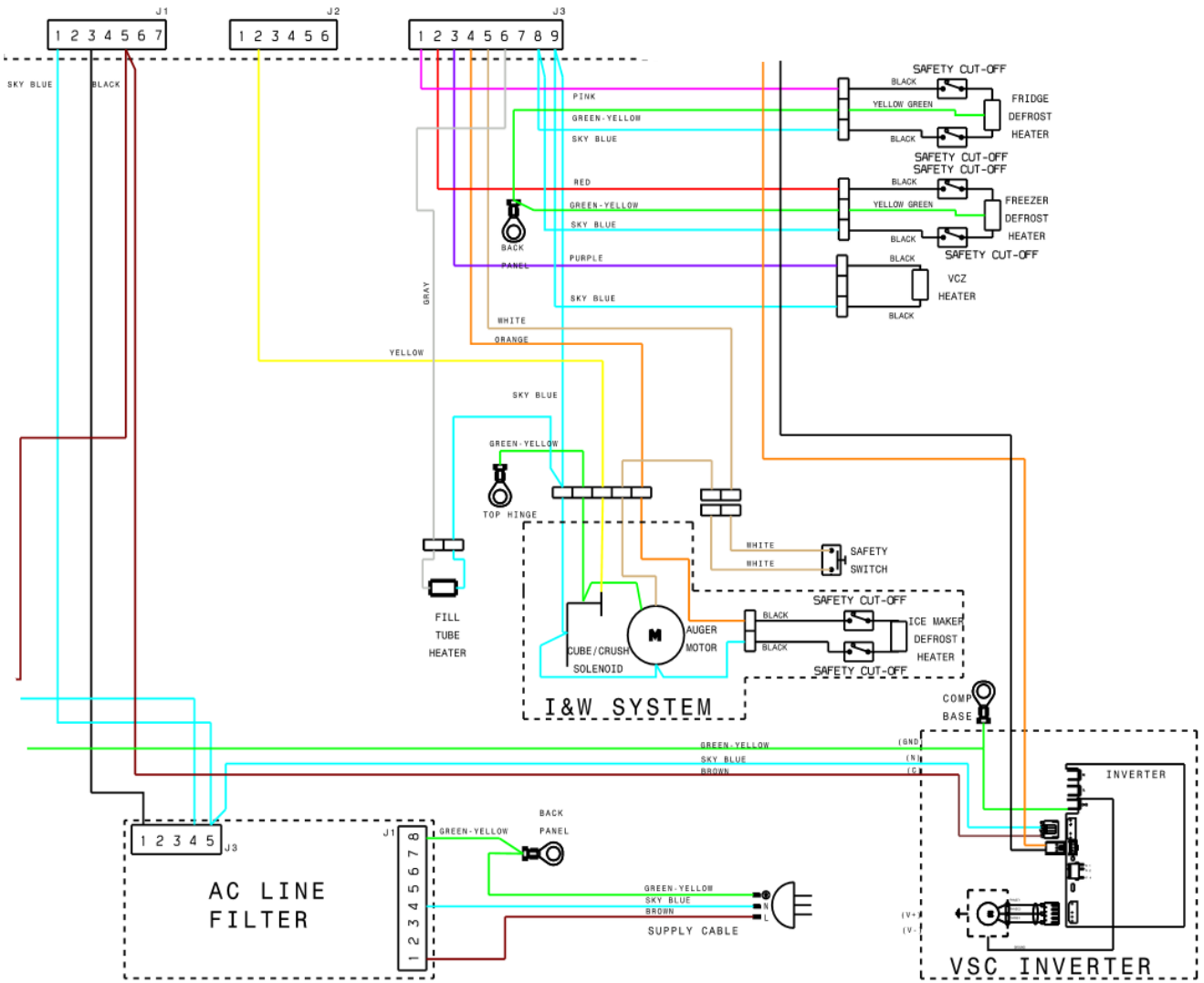
WARNING

IT IS ILLEGAL FOR PERSONS OTHER THAN LICENSED ELECTRICAL MECHANICS OR PERSONS AUTHORIZED BY LEGISLATION TO WORK ON THE FIXED WIRING OF ANY ELECTRICAL INSTALLATION. PENALTIES FOR CONVICTION ARE SEVERE.

IMPORTANT SAFETY NOTICE

This diagram has been prepared for use by electrically qualified service technicians. Electrolux cannot be held responsible for the interpretation of its service publications nor for any injury or damage that may occur in connection with their use.

BOTTOM OF PCB



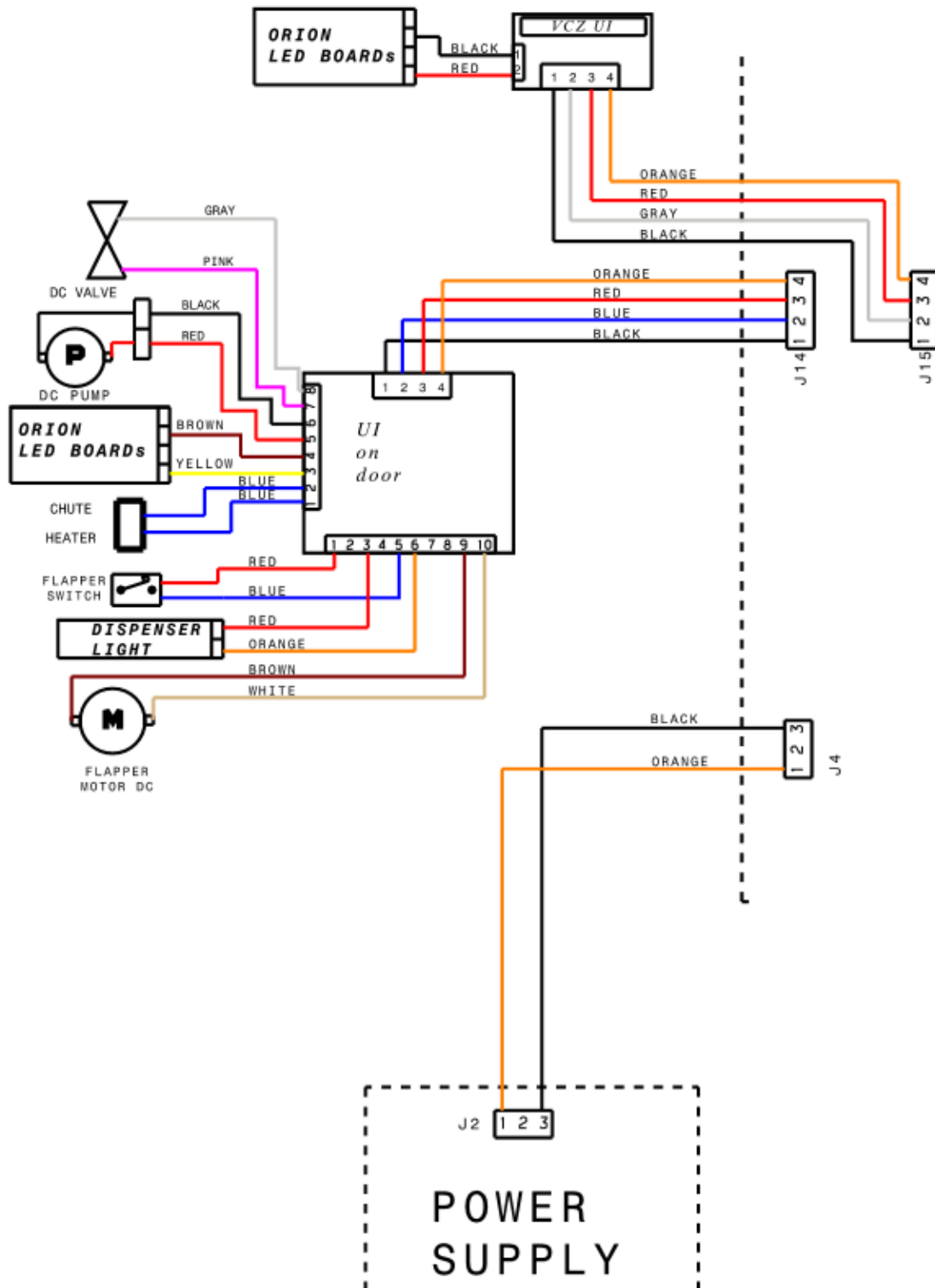
WARNING

IT IS ILLEGAL FOR PERSONS OTHER THAN LICENSED ELECTRICAL MECHANICS OR PERSONS AUTHORISED BY LEGISLATION TO WORK ON THE FIXED WIRING OF ANY ELECTRICAL INSTALLATION. PENALTIES FOR CONVICTION ARE SEVERE.

IMPORTANT SAFETY NOTICE

This diagram has been prepared for use by electrically qualified service technicians. Electrolux cannot be held responsible for the interpretation of its service publications nor for any injury or damage that may occur in connection with their use.

LEFT SIDE OF PCB



WARNING

IT IS ILLEGAL FOR PERSONS OTHER THAN LICENSED ELECTRICAL MECHANICS OR PERSONS AUTHORIZED BY LEGISLATION TO WORK ON THE FIXED WIRING OF ANY ELECTRICAL INSTALLATION. PENALTIES FOR CONVICTION ARE SEVERE.

IMPORTANT SAFETY NOTICE

This diagram has been prepared for use by electrically qualified service technicians. Electrolux cannot be held responsible for the interpretation of its service publications nor for any injury or damage that may occur in connection with their use.

