

# Electrolux

ELECTROLUX HOME PRODUCTS PTY LTD

ABN 51 004 762 341

Technical Publication N° WM1080

Issue: 4

Date: 01/21

## ***PARTS & VIEWS*** *Simpson* ***Top Load Washing Machine***

**New Motor &  
Gearbox**

**MODEL**

**PNC**

**SWT8043**

**913041187 00**

**WWT8040**

**913041192 00**

## MAINTENANCE LEVEL CHANGE SUMMARY

ML	Description	Product Release Date
00	First release	01/12/2019

## MODEL NUMBER IDENTIFICATION

APAC Fabric Care Model Denomination

### AP Fabric Care

1	2	3	4 & 5	6	7	8	9	10	11
SALES COMPANY USE									
Brand	Product Category	Product Typology	Load Kg	Spin Speed (for FL & TL)	User Interface	Spec Level	Design	Colour	Generation
E = Electrolux	W = Washing equipment	F = Front Load	50 = 5kg	Empty for Dryer	0 = Colour LCD	A = Inverter + Lens	E = Emerald	W = White	*blank* = 1st Gen
Z = Zanussi	D = Drying machine	W = Washer Dryer	55 = 5.5kg	6 = 1600rpm	1 = TC1	B = Inverter + Chrome	Q = Quartz	S = Medium Silver	1 = 2nd Gen
S = Simpson		T = Top Load	60 = 6kg	4 = 1400rpm	2 = TC2	C = Inverter + Silver	A = Alexis	G = Grey	2 = 3rd Gen
W = Westinghouse		V = Vented Dryer	65 = 6.5kg	2 = 1200rpm	3 = TC3	D = Universal + White	M = Mini	M = Meteor Silver	3 = 4nd Gen
A = AEG		C = Condenser	70 = 7kg	1 = 1100rpm	4 = TC4	E = Induction + White	D = DiamondPlus	Q = Quartz Silver	A = Austria
		H = Heatpump	75 = 7.5kg	0 = 1000rpm	5 = TC5	F = Induction + Silver/Gre	C = Catamaran	D = Slate Grey Silver	
		S = Semi-auto Twin Tub	80 = 8kg	5 = 850rpm	6 = TC6 (Knob Electronic	G = Universal + Lens	K = Kaizen	B = Black	
		U = Undercounter	85 = 8.5kg		7 = TC7 (Knob Timer)	L = LPA	S = Star Sapphire		
			90 = 9kg		8 = Media		T = Topaz		
			95 = 9.5kg			S = AutoDose	1 = Media		
			10 = 10kg				2 = Xinle		
			11 = 11kg						
			12 = 12kg						
			14 = 14kg						
			15 = 15kg						
			18 = 18kg						

# CONTENTS

**MAINTENANCE LEVEL CHANGE SUMMARY .....2**

**MODEL NUMBER IDENTIFICATION.....2**

**EXPLODED VIEWS & PARTS LISTS.....4**

*MODEL: SWT8043 PNC 913041187.....4*

*TOP PANEL ASSEMBLY.....4*

*MODEL: SWT8043 PNC 913041187.....6*

*CABINET ASSEMBLY.....6*

*MODEL: SWT8043 PNC 913041187.....8*

*SPIN & OUTER BLOWLS & AGITATOR ASSEMBLY.....8*

*MODEL: SWT8043 PNC 913041187.....10*

*MOTOR & TRANSMISSION ASSEMBLY..... 10*

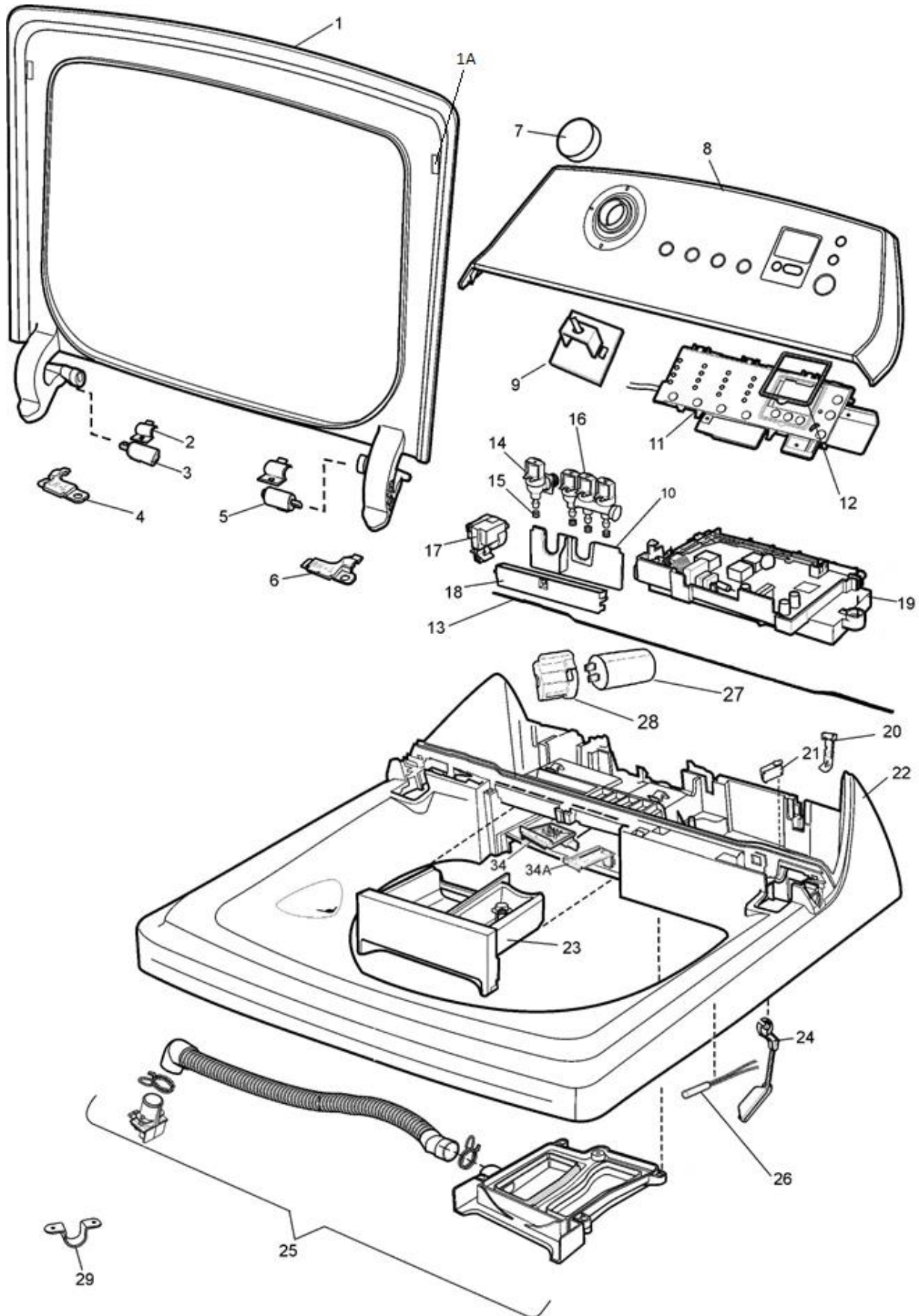
**NOTE: In Parts Listings**

<b>N.I.</b>	<b>=</b>	<b>Not Illustrated</b>
<b>N.P.A.</b>	<b>=</b>	<b>No Part Available</b>
<b>N.P.N.</b>	<b>=</b>	<b>Not Used on this Model</b>

# EXPLODED VIEWS & PARTS LISTS

MODEL: SWT8043, WWT8040

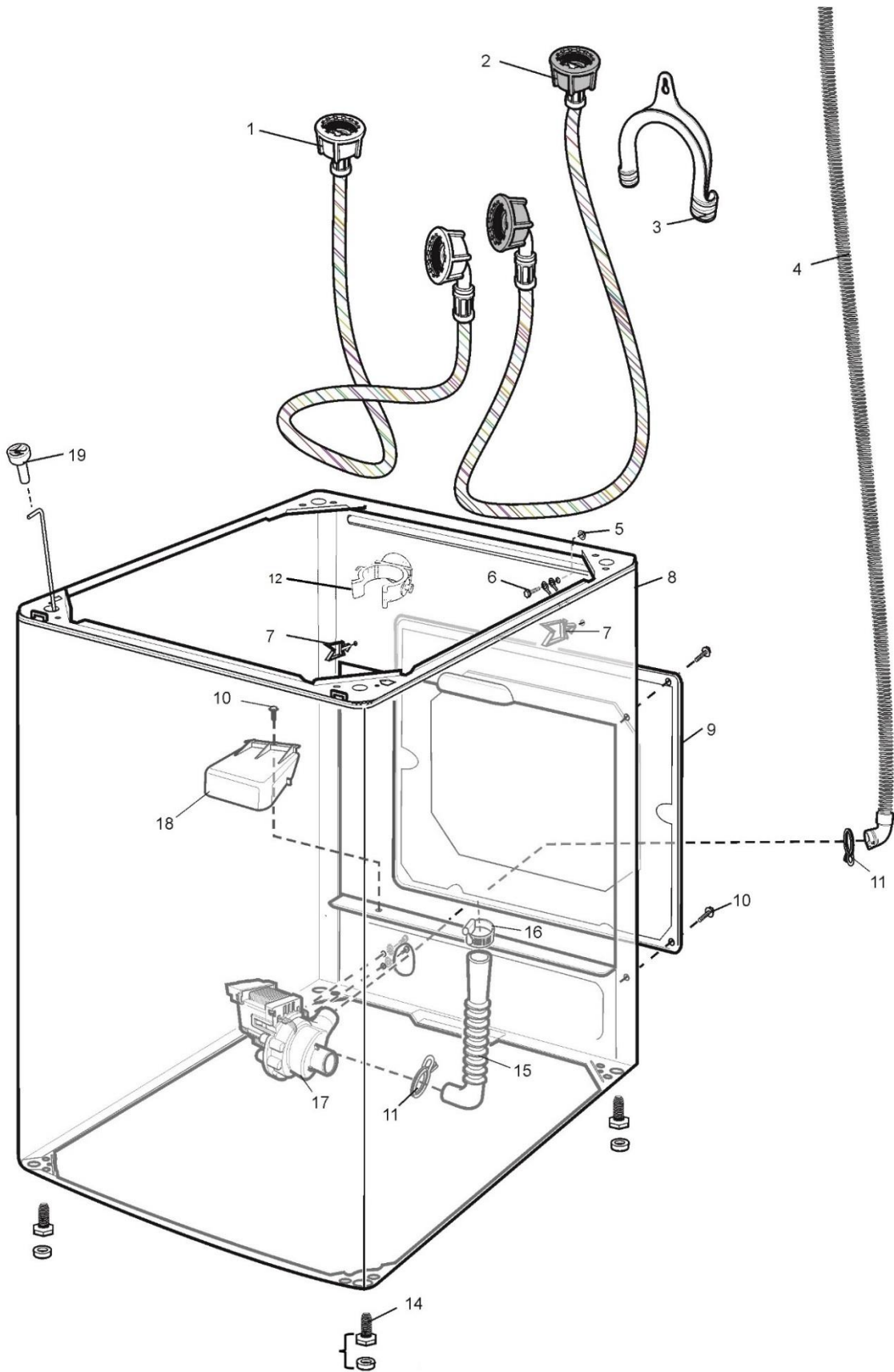
TOP PANEL ASSEMBLY



ITEM	PART N°	DESCRIPTION	SWT	WWT
1	A18998505	LID ASSEMBLY W/O LATCH	1	
1	A18998502	LID ASSEMBLY W/O LATCH PAINTED		1
1A	119247300	GROMMET	2	2
2	119139700	BRACKET DAMPER	2	2
3	A04871901	DAMPER LID - LH	1	1
4	119234200	HINGE COVER LH	1	1
5	A04871902	DAMPER LID - RH	1	1
6	119234300	HINGE COVER RH	1	1
7	A03794302	KNOB ASSEMBLY WHITE	1	1
8	A03793301	PANEL CONTROL ASSEMBLY SWT8043	1	
8	A03793306	PANEL CONTROL ASSEMBLY WWT8040		1
9	807453304	PCBA AUX SELECTOR-TC4-EAX12300	1	1
10	A00091006	INSERT VALVE HOT & COLD	1	1
11	A11136510	PCBA UI LOW END NEW DRIVE	1	1
12	A03866401	GASKET UI	1	1
13	A06268002	SEAL CONTROL PANEL	1	1
14	119410001	VALVE INLET ASSY HOT (Item 15 included)	1	1
15	38784409	GROMMET VALVE INLET	4	1
16	A00091603	VALVE INLET COLD TRIPLE (Item 15 included)	1	1
17	A00951802	SENSOR PRESSURE	1	1
18	A03777003	RETAINER SCREEN DISPENSER	1	1
19	A03739902A	PCBA MAIN BOARD	1	1
20	0028200097	COVER HARNESS	1	1
21	119020300	SWITCH KNOCK OFF	1	1
22	A03683614	PANEL TOP LARGE	1	1
23	A00893205	DRAWER DISPENSER COMPLETE	1	1
24	119245300	LEVER KNOCK OFF	1	1
25	A03713209	DETERGENT HOUSING ASSEMBLY COMPLETE	1	1
26	119000902	SWITCH LID REED	1	1
27	119011212	CAPACITOR 14UF/450VAC	1	1
28	809043102	CAP CAPACITOR	1	1
29	A06344201	HOLDER PIPE	1	1
34	0219200002	SCREEN DETERGENT DISPENSER	1	1
34A	A00798701	SCREEN SOFTENER DISPENSER	1	1
NI	A06009102	WIRING HARNESS COMPLETE IND	1	1
NI	A06191706	CABLE POWER CORD TL AU	1	1

**MODEL: SWT8043, WWT8040**

**CABINET ASSEMBLY**

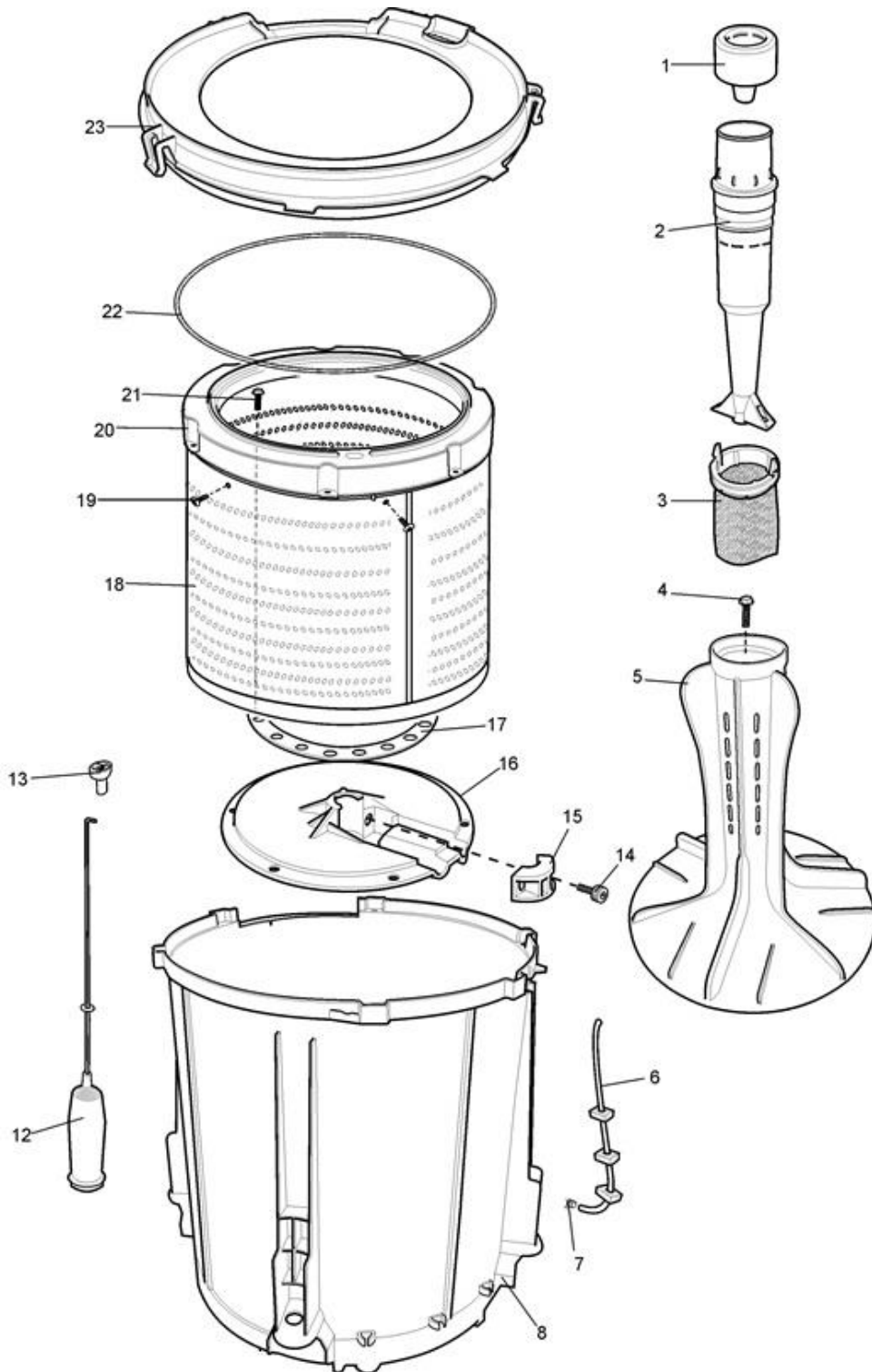


ITEM	PART N°	DESCRIPTION	QTY
1	<b>0571200125</b>	HOSE ASSY., INLET (HOT) (INC. TAILS, RED NUTS)	1
2	<b>0571200124</b>	HOSE ASSY., INLET (COLD) (INC. TAILS, BLUE NUTS)	1
3	<b>124291600</b>	HOOK, OUTLET HOSE	1
4	<b>119240211</b>	HOSE, OUTLET	1
5	<b>NPN</b>	NUT, EARTH	1
6	<b>NPN</b>	SCREW, EARTH	1
7	<b>0125200008</b>	CLIP	3
8	<b>NPN</b>	CABINET, NOT AVAILABLE AS A SPARE PART	1
9	<b>NPN</b>	PANEL, BACK	1
10	<b>NPN</b>	SCREW BACK PANEL	6
11	<b>119150500</b>	CLAMP DRAIN HOSE	2
12	<b>808156802</b>	CLAMP HOSE DETERGENT	1
14	<b>0031200007</b>	LEVELLING LEG	4
15	<b>0571200110</b>	HOSE TUB TO PUMP	1
16	<b>7550001022</b>	CLAMP	1
17	<b>0499200049</b>	PUMP	1
18	<b>119226101</b>	COVER, PUMP	1
19	<b>360342</b>	CAP, SUSPENSION ROD	4
N I	<b>8000001866</b>	WASHER, STRAINER	2
N I	<b>0065200012</b>	NUT, INLET VALVE SEALING (OPTIONAL)	1
N I	<b>0211200021</b>	GREASE, SUSPENSION ROD PIVOT POINTS (NULON L90) (125g)	x

**MODEL: SWT8043, WWT8040**

**SPIN & OUTER BOWLS & AGITATOR ASSEMBLY**

Ex 7695

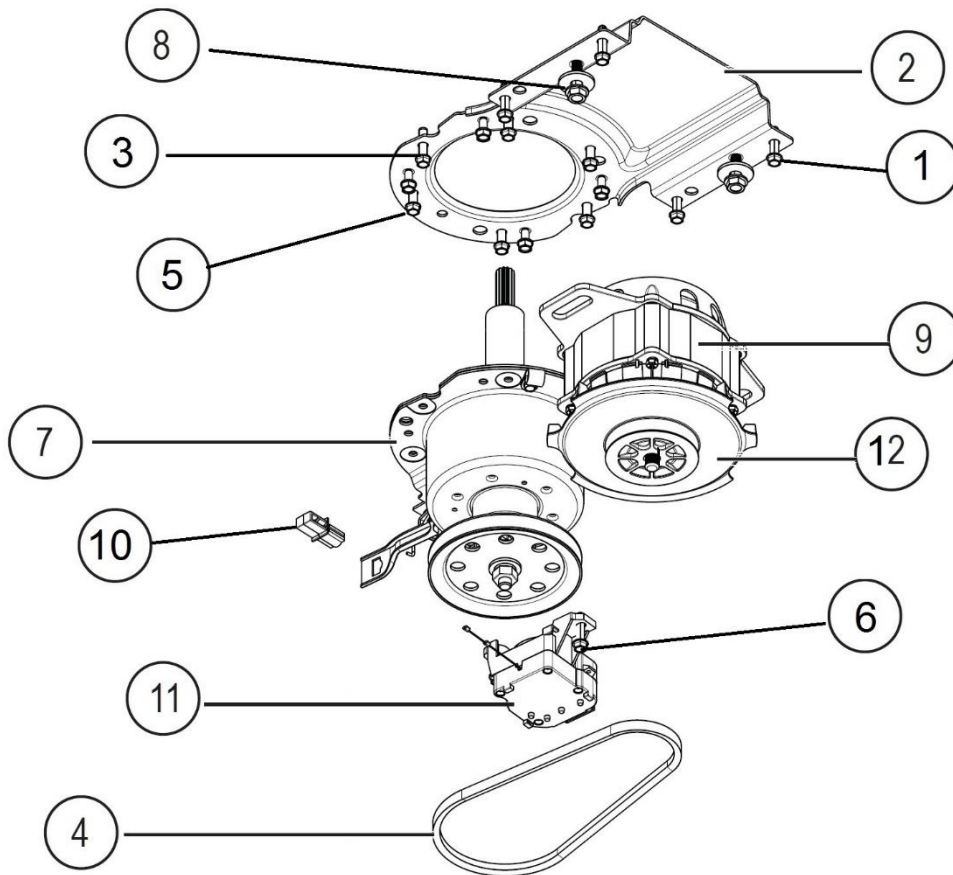




ITEM	PART N°	DESCRIPTION	Ex. 7695	QTY
1	<b>119270400</b>	CAP AGITATOR		1
2	<b>119408480</b>	FRAME, FILTER/BAG		1
3	<b>0564257398</b>	BAG ASSY, FILTER		1
4	<b>0150200077</b>	SCREW, M6 x 20mm, HEX. HD. S.S.		1
5	<b>119268110</b>	AGITATOR		1
6	<b>A11528703</b>	TUBE, ASSEMBLY AIR DOME (ITEM 6A, 7 INCLUDED)		1
6a	<b>NPN</b>	PROTECTOR, AIR TUBE (See item 6)		3
7	<b>NPN</b>	CLAMP, AIR TUBE (See item 6)		1
8	<b>NPN</b>	BOWL OUTER		1
12	<b>*0138277067</b>	ROD KIT, SUSPENSION (KIT OF 4)		1
13	<b>360342</b>	CAP, SUSPENSION ROD		4
14	<b>NPN</b>	SCREW, M8 x 30mm, SKT S.S. (6mm HEAD) (See item 16)		2
15	<b>NPN</b>	CLAMP, SPIN BOWL SUPPORT PLATE (See item 16)		1
16	<b>0022200024K</b>	PLATE ASSY., SPIN BOWL SUPPORT (Inc Items 14,15,16,17 & 21)		1
17	<b>NPN</b>	GASKET, BOWL TO PLATE (KIT of 2) (See item 16)		1
18	<b>NPN</b>	BOWL, SPIN		1
19	<b>NPN</b>	SCREW		8
20	<b>0223203001</b>	RING ASSY., BALANCE		1
21	<b>0150200085</b>	SCREW		6
22	<b>NPN</b>	SEAL – PART INCLUDED IN ITEM 23		1
23	<b>119401394</b>	COVER, OUTER BOWL		1
N.I.	<b>0567250004</b>	TOOL, AGITATOR SCREW REMOVAL		x
N.I.	<b>0211200021</b>	GREASE, SUSPENSION ROD PIVOT POINTS (NULON L90)(125g Tube)		x
<b>*NOTE: #Rod kit consists of four rods, 3 x Blue and 1 x White( Motor side).</b>				

**MODEL: SWT8043, WWT8040**

**MOTOR & TRANSMISSION ASSEMBLY**



ITEM	PART N°	DESCRIPTION	QTY
1	119123701	SCREW 1/4-10 X 28	4
2	A13958001	FRAME SUPPORT	1
3	119123701	SCREW 1/4-10 X 28	6
4	119345103	BELT MOTOR M24	1
5	A15062301	SCREW HWH M6X12 TAPTITE	4
6	119123701	SCREW 1/4-10 X 28	2
7	A14341002	GEARBOX & SEAL ASSEMBLY IND 6:4:1	1
8	119122202	SCREW HWH M5*0.8*12 TAPTITE	2
9	A00181306	MOTOR & PULLEY IND-50HZ (includes item 12)	1
10	A00182501	LINK BRAKE	1
11	A96873401	ACTUATOR BRAKE IND 220V LEILI	1
12	<b>NPA See item 9</b>	PULLEY MOTOR	1

<b>Publication Version Control Chart</b>		
<b>Issue Number</b>	<b>Reason</b>	<b>Date</b>
1	Original Document.	11-11-2019
2	Added motor pulley	28-04-2020
3	Removed motor pulley. Not field replaceable	14-05-2020
4	Correction to suspension rod information	18-01-2021