

SERVICE

M A N U A L

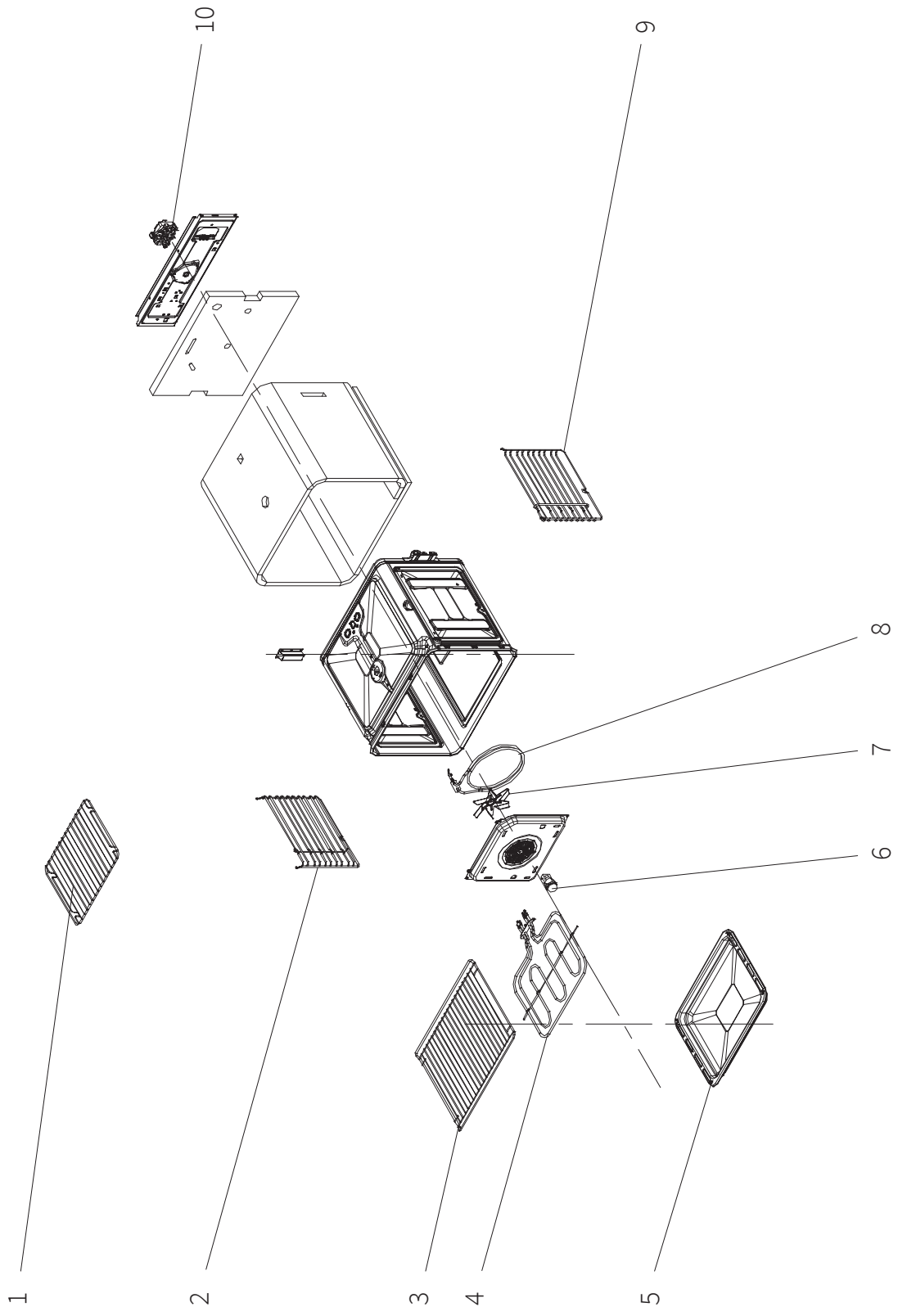
BUILT IN OVEN

VOMX65A1

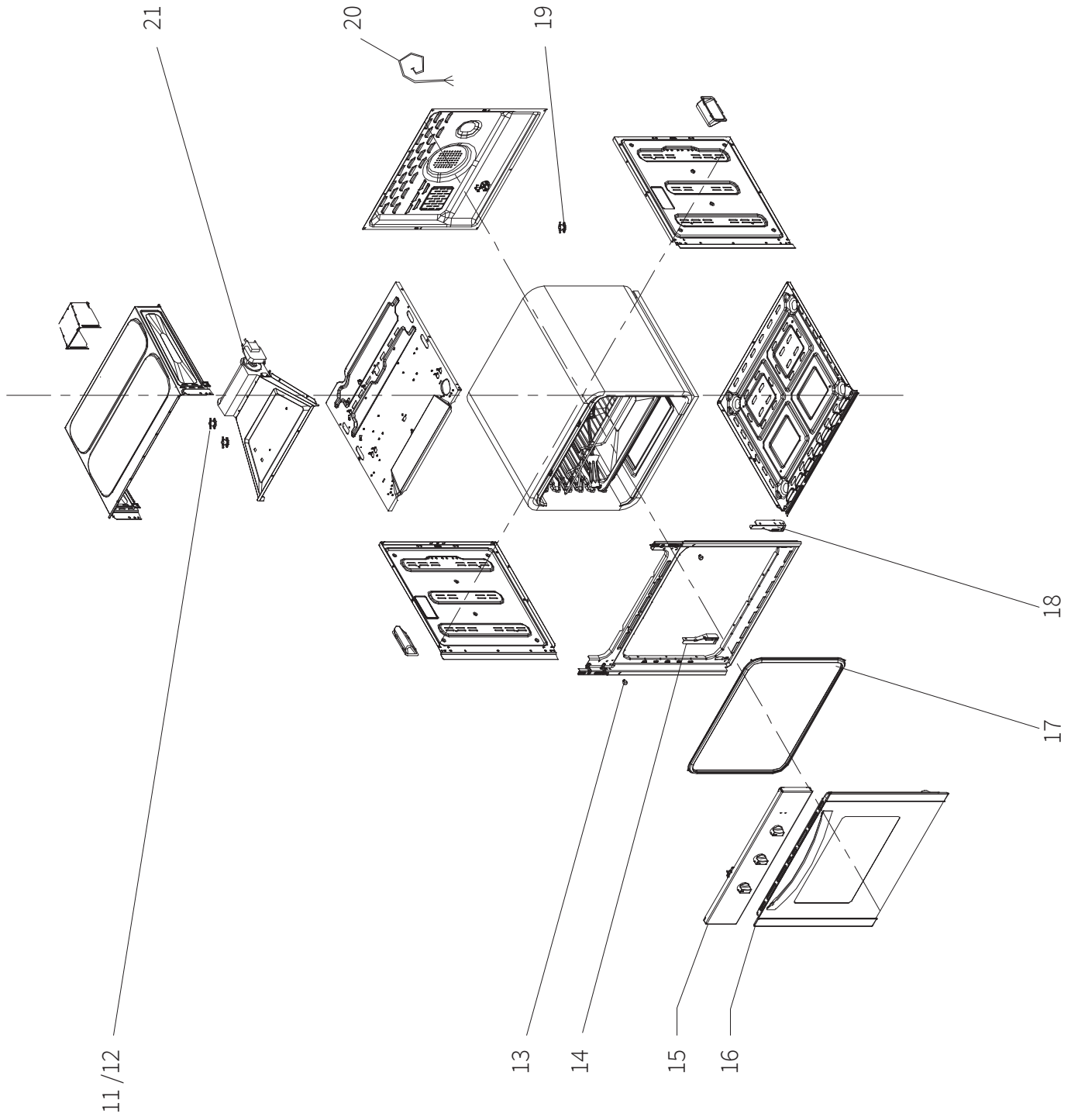
Disclaimer

The information contained in this Service Manual is intended for licensed service personnel only.

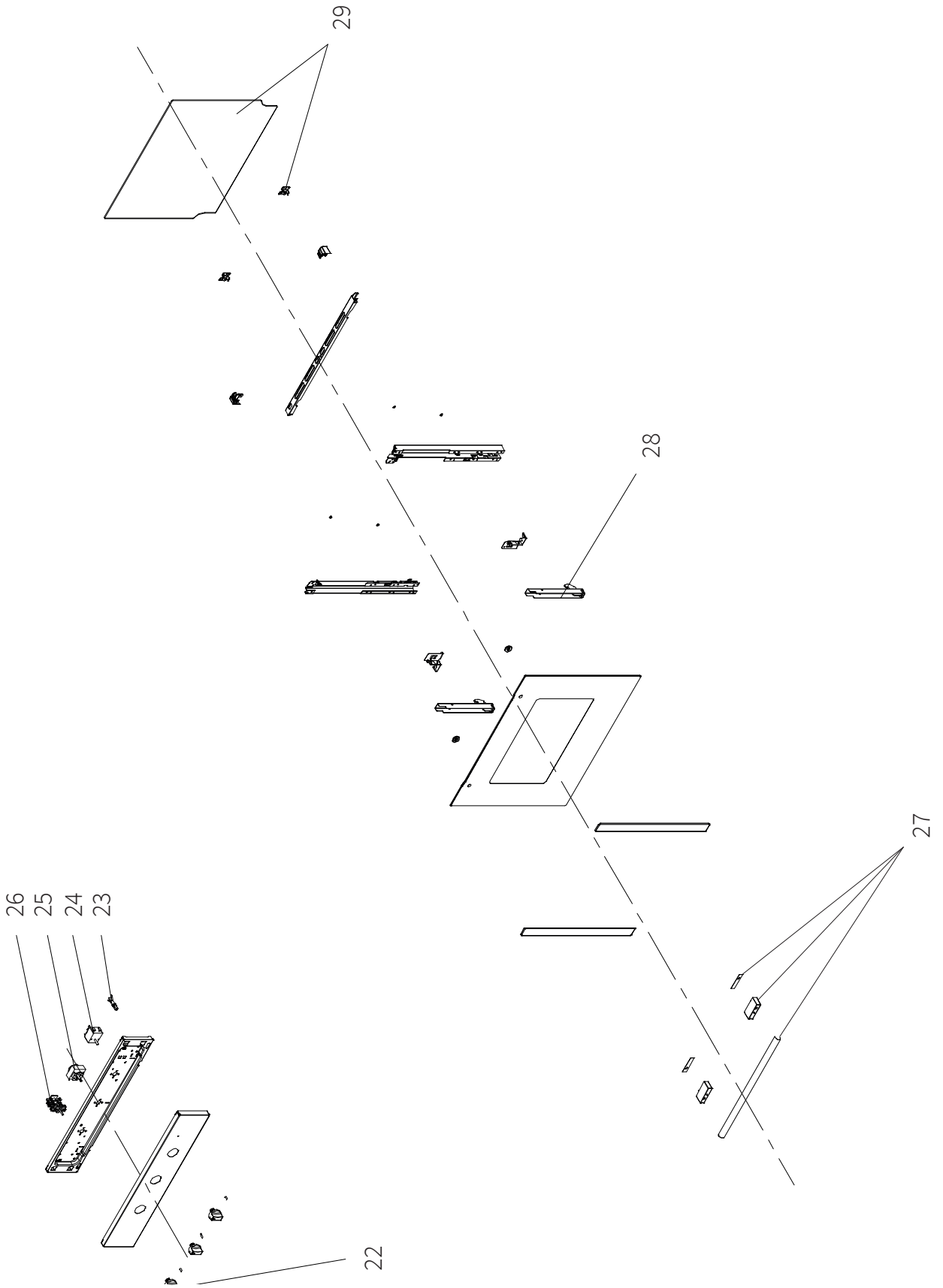
EXPLODED VIEW



EXPLODED VIEW



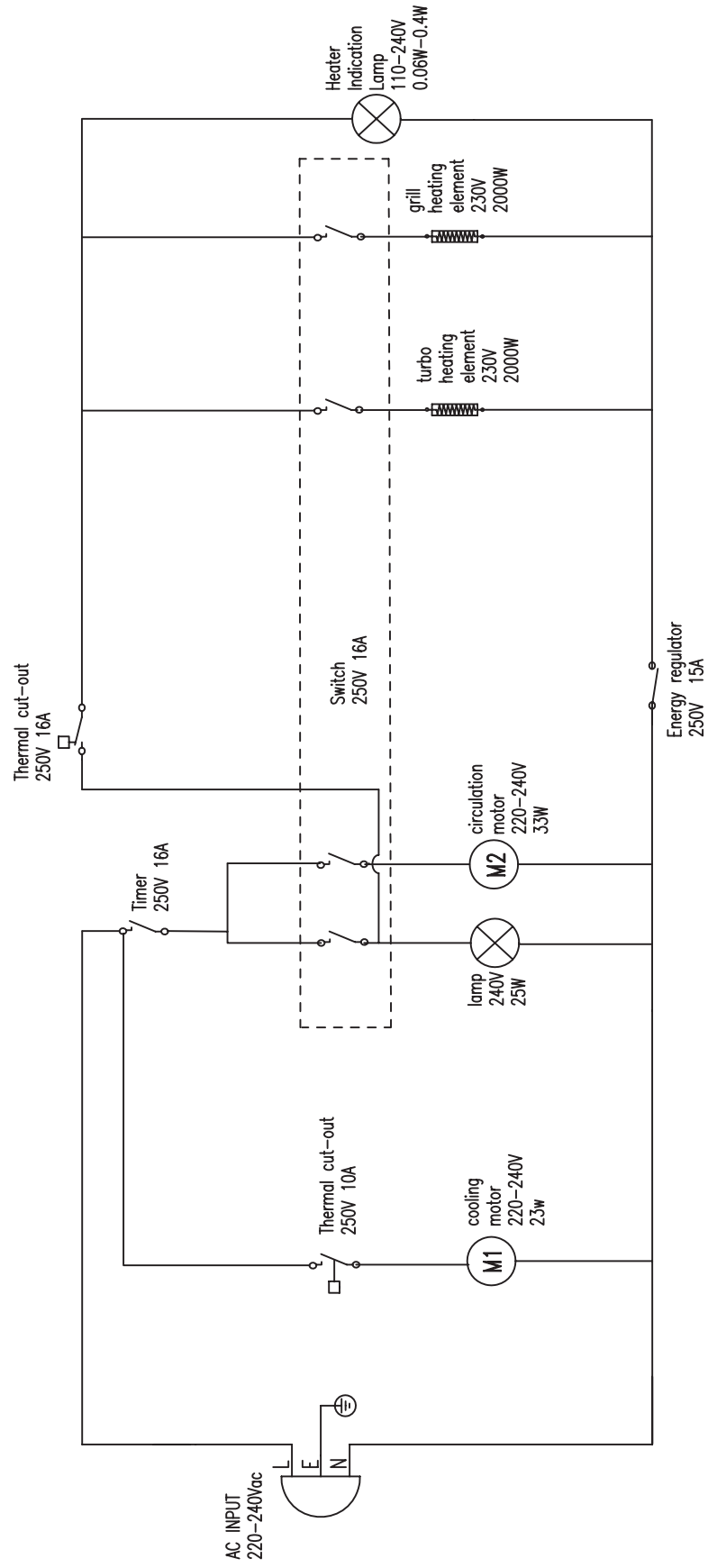
EXPLODED VIEW



PARTS LIST

Item	ISS Code	ISS DESCRIPTION
1	2199201	Drip Tray Insert
2	2199204	Side Rack (left)
3	2199200	Wire Rack
4	2199502	Grill Element
5	2199150	Drip Tray
6	2199088	Globe and Holder
7,10	2199504	Oven Motor /Fan
8	2199503	Circular Element
9	2199203	Side Rack (right)
11,12	2199506	Safety Device (Thermostat 70°C)
13	2199903	Screw & Rubber Cover
14	2199206	Hinge Support (Left)
15	2199090	Control Panel
16	2111900	Complete Door - Vitale (double glazed)
17	2199900	Rubber Door Seal
18	2199205	Hinge Support (Right)
19	2199510	Safety Device (Thermostat 250°C)
20	2199901	Cord + Power Plug 10A
21	2199505	Cooling Fan
22	2199402	Knob
23	2199400	Indicator and Bezel
24	2199500	Thermostat (Temp Control)
25	2199401	Timer
26	2199501	Selector Switch
27	2199904	Door Handle
28	2199208	Hinge Assembly (L & R)
29	2199800	Inner Glass Panel with spring clip

WIRING DIAGRAM



CONTACT

Vitale Customer Care

 1300 798 260

 vitale@productapprovals.com.au

 PO Box 7785, Baulkham Hills, BC NSW 1755

Version 1.3

We are committed to ongoing research and development. Every effort has been made to ensure all information in the service manual is correct at time of going to print. Dimensions should be used as a reference only and actual dimensions should be taken from the physical product.