

SERVICE

M A N U A L

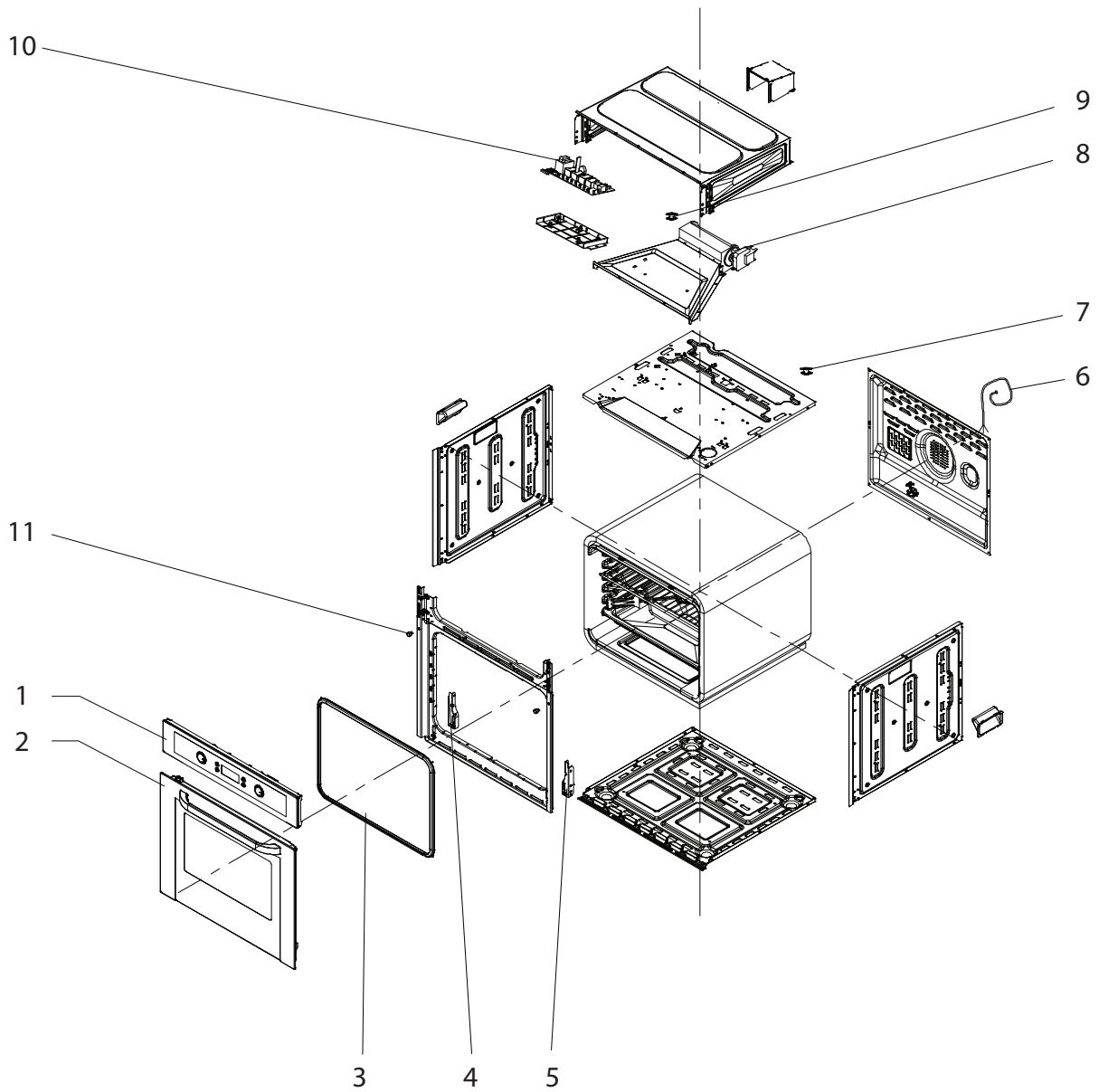
BUILT IN OVEN

VODX69A1

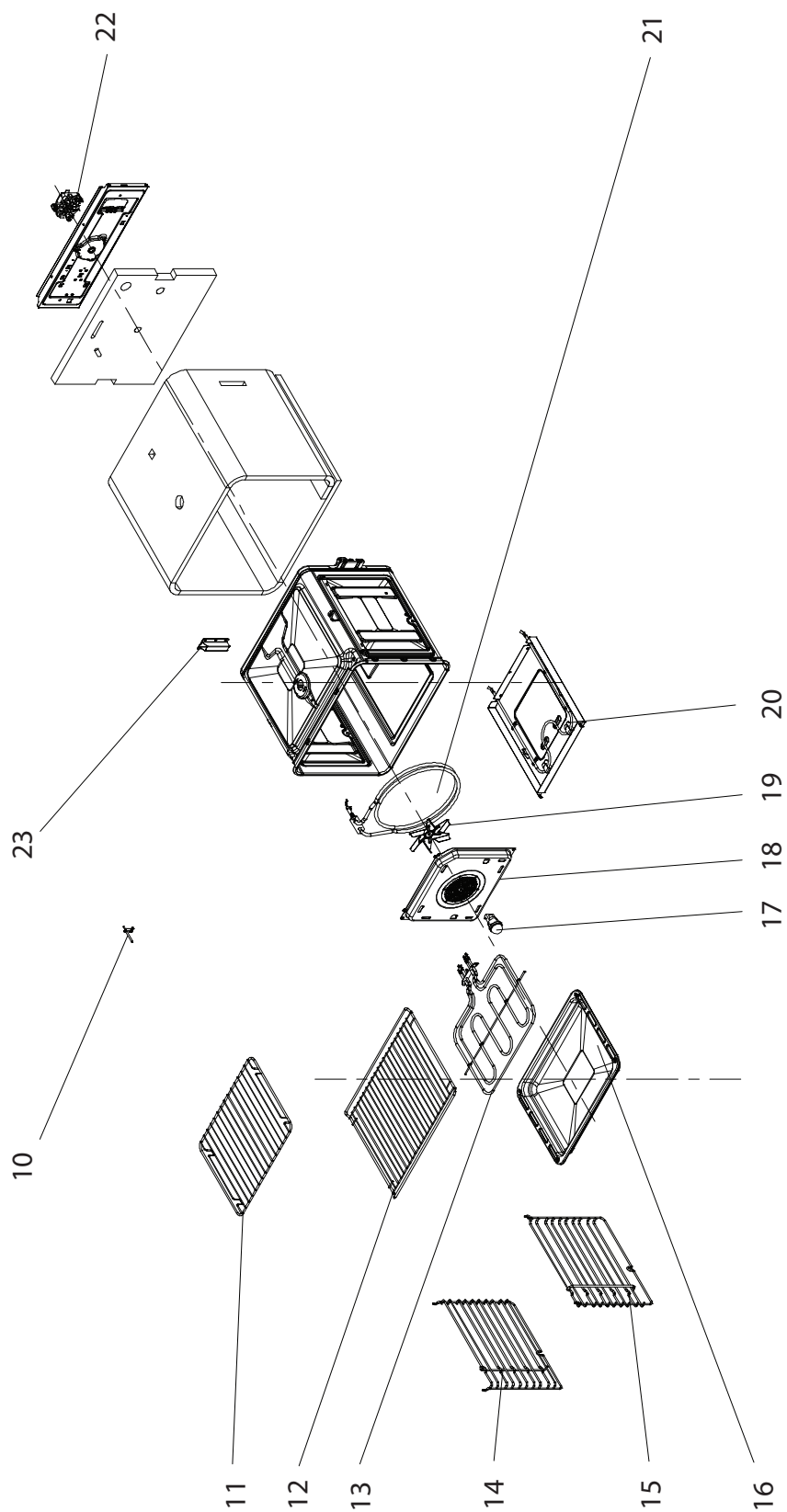
Disclaimer

The information contained in this Service Manual is intended for licensed service personnel only.

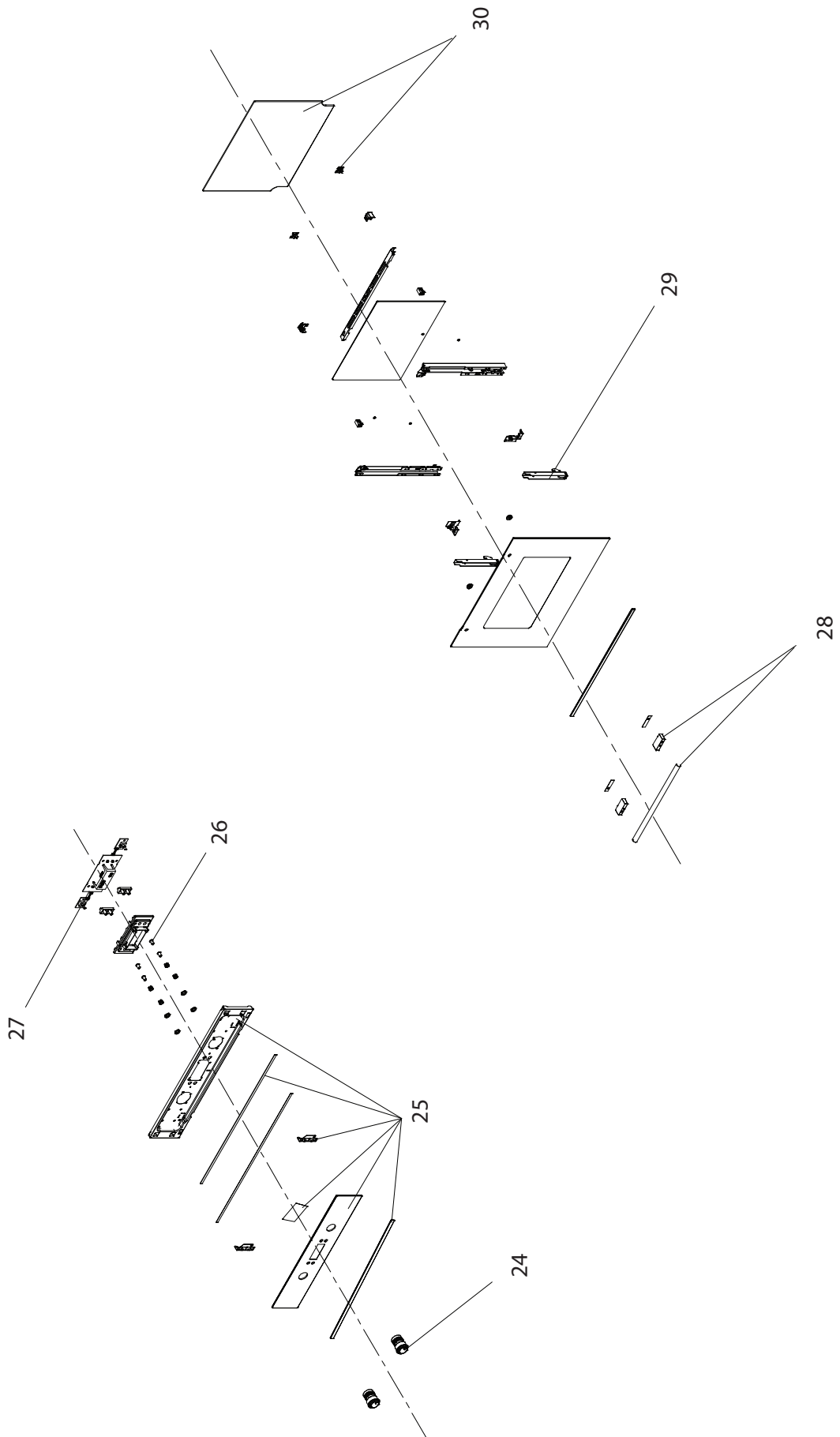
EXPLODED VIEW



EXPLODED VIEW



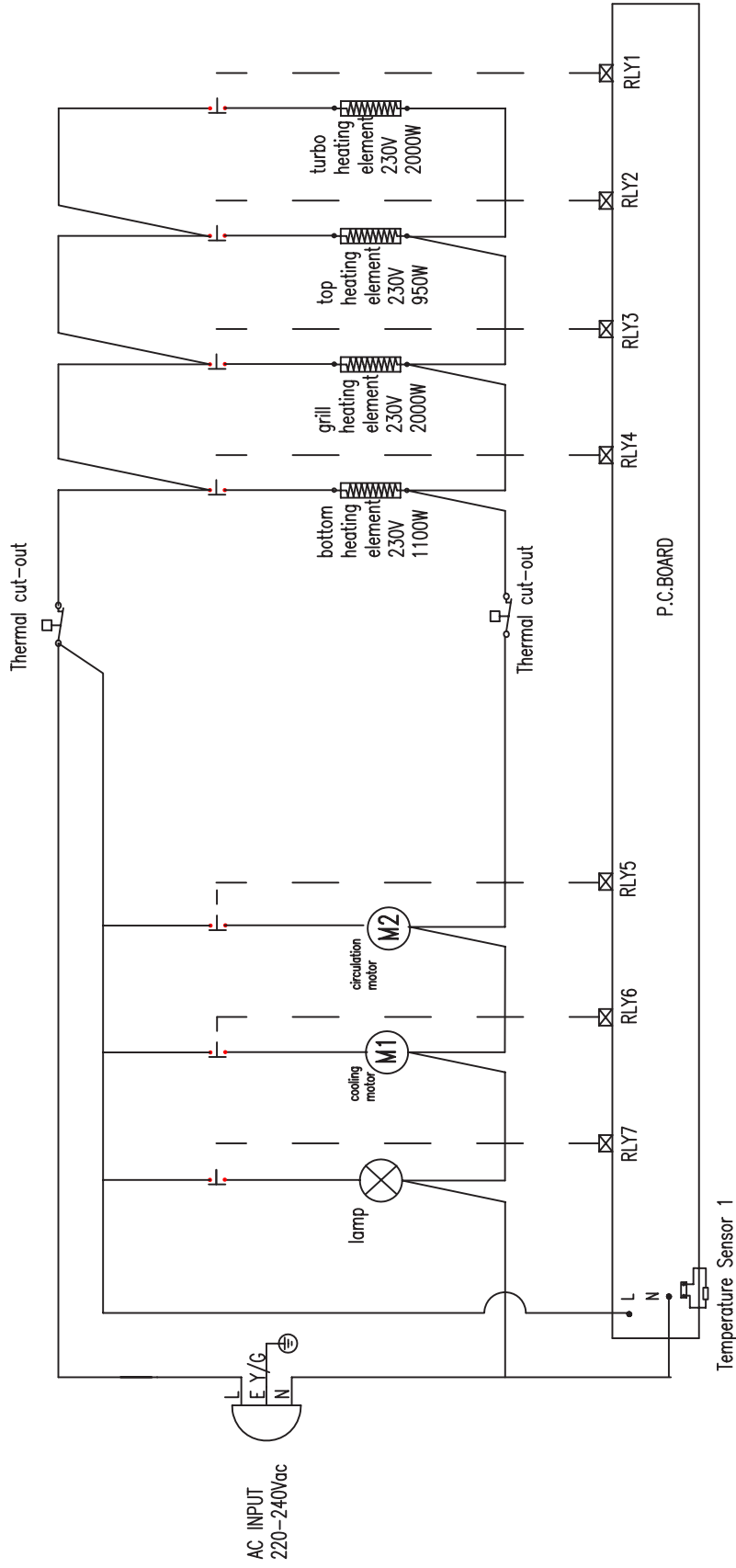
EXPLODED VIEW



PARTS LIST

Item	ISS Code	ISS DESCRIPTION
1	2199087	Control Panel (9 F Vitale)
2	2111901	Complete Door with Handle - Vitale (triple glazed)
3	2199900	Rubber Door Seal
4	2199206	Hinge Support (Left)
5	2199205	Hinge Support (Right)
6	2199902	Cord +Power Plug 15A
7	2199511	Safety Device (Thermostat 125°C)
8	2199505	Cooling Fan
9	2199510	Safety Device (Thermostat 250°C)
10	2199513	Temperature Sensor
11	2199201	Drip Tray Insert
12	2199200	Wire Rack
13	2199508	Top Element
14	2199204	Side Rack (left)
15	2199203	Side Rack (right)
16	2199150	Drip Tray
17	2199088	Globe and Holder
19,22	2199504	Oven Motor/Fan with blades
20	2199515	Bottom Element
21	2199503	Circular Element
24	2199404	Knob(push in)
26	2199020	Timer Buttons (set of 4)
27	2199514	Display Board Assembly
28	2199509	Power board Assembly (PCB)
29	2199904	Door Handle
30	2199207	Hinge Assembly (L & R)
31	2199800	Inner Glass Panel with spring clip
32	2199903	Screw & Rubber Cover

WIRING DIAGRAM



CONTACT

Vitale Customer Care

 1300 798 260

 vitale@productapprovals.com.au

 PO Box 7785, Baulkham Hills, BC NSW 1755

Version 1.4

We are committed to ongoing research and development. Every effort has been made to ensure all information in the service manual is correct at time of going to print. Dimensions should be used as a reference only and actual dimensions should be taken from the physical product.