



# SERVICE MANUAL

## 900 // 5 BURNER GLASS

## GAS HOB-WOK

## TGWF90G

DISCLAIMER // THE INFORMATION CONTAINED IN THIS SERVICE MANUAL IS INTENDED FOR LICENSED PERSONNEL ONLY. PLEASE CONTACT ARISIT FOR FURTHER INFORMATION [AUST] 1300 762 219 [NEW ZEALAND] 09 306 1020

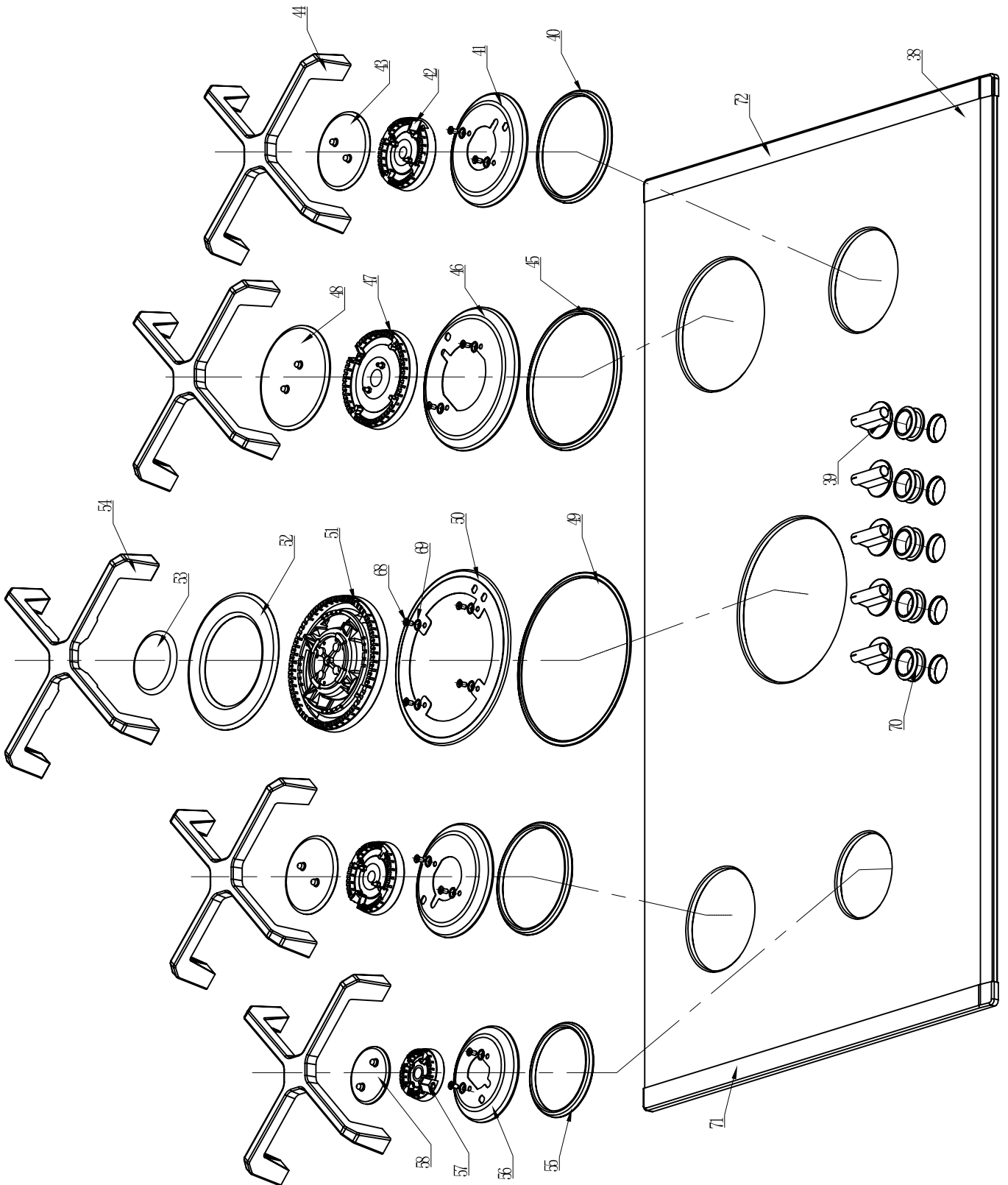
 **tisira**

Version 3.2

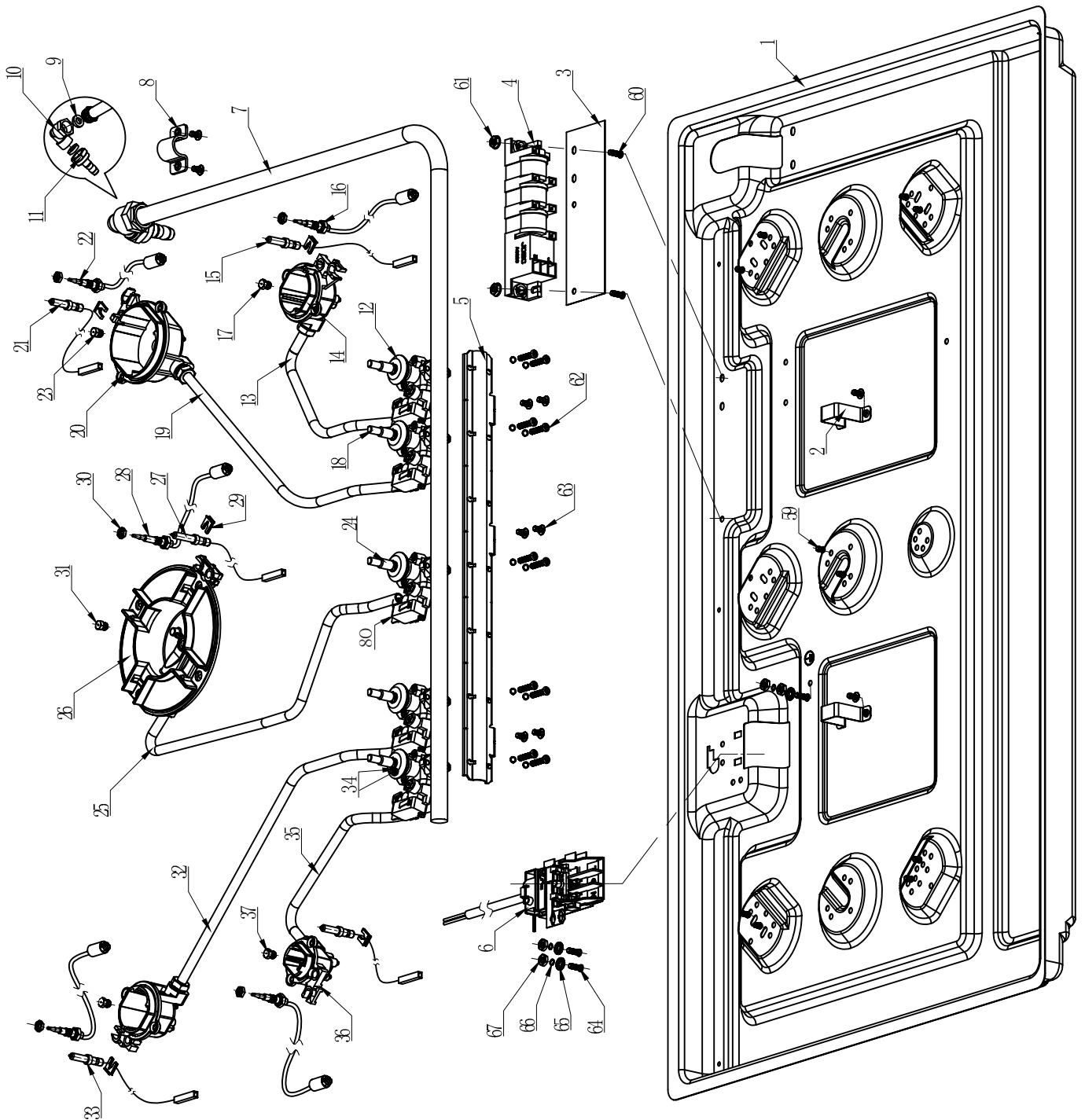


[www.tisira.com](http://www.tisira.com)

# Exploded View



# Exploded View



## Parts List

ID	PART NUMBER	DESCRIPTION
38,71,72	2206025.001	Hob Glass Panel Assembly - 900
4	2299041	Ignition Generators 6 Points A6 220-240V
12	2299055	Gas Valve FFD 0.9 (#100 burner) & Ignition Switch
15	2299030	Ignition Candle - 370mm
16	2299062	Thermocouple 500
17	2299000.204	Gas Injector Ø1.10mm
18	2299056	Gas Valve FFD 0.9 (#100 Burner) & Ignition Switch
21	2299502	Ignition Candle - 220mm
22	2299062	Thermocouple 500
23	2299000.205	Gas Injector Ø1.40mm
24	2299057	Gas Valve FFD 1.1 (#120 burner) & Ignition Switch
27	2299503	Ignition
28	2299061	Thermocouple 350 (suits Wok)
29	2299039	Ignition Candle Clip
30	2299069	Thermocouple Fastening Nut
31	2299000.206	Gas Injector Ø1.70mm
33	2299504	Ignition Candle - 570mm
34	2299054	Gas Valve FFD 0.6 (#50 burner) & Ignition Switch
37	2299000.202	Gas Injector Ø0.90mm
39	2199100	Black Plastic Knob, SS Cover
40	2299000.901	#70 Waterproof Seal
41	229900.101	#70 Waterproof Base
42	2299002	Diffuser semi rapid #75
43	2299006	Burner cap #75 Aux semi rapid, cast iron
44	2299000.300	Burner Cross Trivet (Not suitable for #120)
45	2299000.902	100# waterproof seal
46	2299000.102	100# waterproof base
47	2299003	Diffuser Rapid #100
48	2299007	Burner Cap #100 CI
49	2299000.903	120# waterproof seal
50	2299000.103	120# waterproof base

Note:

#50 - Auxiliary Burner

#70 - Semi-Rapid Burner

#100 - Rapid Burner

#120 - Wok Burner

## Parts List

ID	PART NUMBER	DESCRIPTION
51	2299004	Diffuser wok #120
52	2299009	Burner cap wok - outer #120, cast iron
53	2299008	Burner cap wok - inner #120, cast iron
54	2299000.301	Wok Cross Trivet (Suitable for #120)
55	2299000.900	50# waterproof seal
56	2299000.100	50# waterproof base
57	2299001	Diffuser Aux Burner
58	2299005	Burner Cap #50 Aux
70	22990000.904	Knob sealing gasket
80	2299501	Ignition Microswitch for Gas Valve
	2299000.203	Gas Injector Ø 0.98 (ULPG)
	2299000.202	Gas Injector Ø 0.90 (ULPG)
	2299000.201	Gas Injector Ø 0.70 (ULPG)
	2299000.200	Gas Injector Ø 0.55 (ULPG)

Note:

#50 - Auxiliary Burner

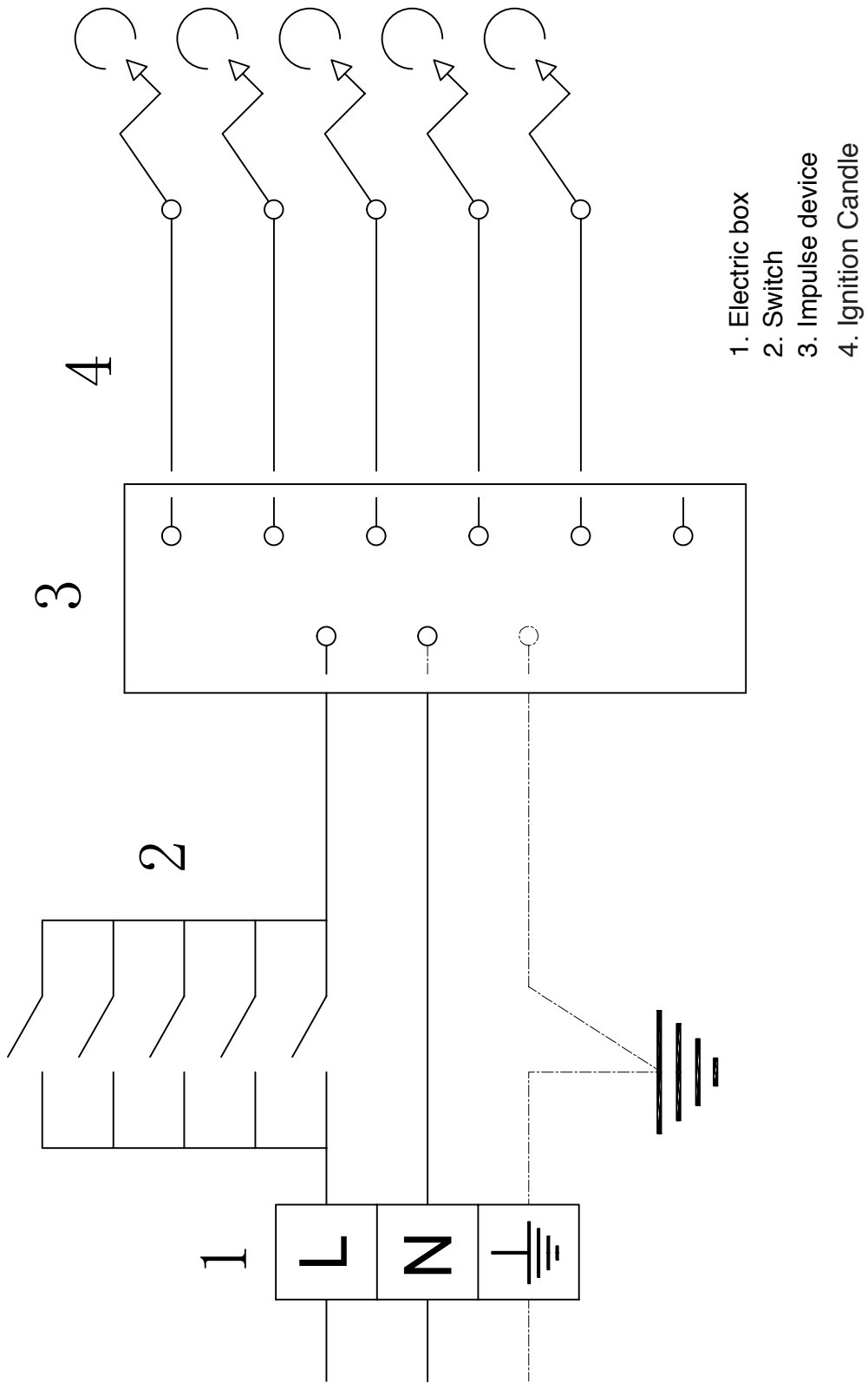
#70 - Semi-Rapid Burner

#100 - Rapid Burner

#120 - Wok Burner



# Wiring Diagram





## CONTACT DETAILS

AUSTRALIA  
ARISIT PTY LIMITED

40-44 Mark Anthony Drive,  
Dandenong South, VIC 3175,  
Australia

P // 1300 762 219  
F // 03 9768 0838  
consumer.care@arisit.com

NEW ZEALAND  
ARISIT PTY LIMITED

PO Box 68-140  
Newton, Auckland 1145,  
New Zealand

P // 09 306 1020  
F // 09 302 0077  
sales@aristonappliances.co.nz

Tisira is committed to ongoing research and development. Every effort has been made to ensure all information in this service manual is correct at time of going to print. Dimensions should be used as a reference only and actual dimensions should be taken from the physical product only.

Manufacturer reserves the right to change specifications without notice.

 **tisira**



[www.tisira.com](http://www.tisira.com)