



SERVICE MANUAL

12 PLACE // DISHWASHER

TDW12X

DISCLAIMER // THE INFORMATION CONTAINED IN THIS SERVICE MANUAL IS INTENDED FOR LICENSED PERSONNEL ONLY. PLEASE CONTACT ARISIT FOR FUTHER INFORMATION [AUST] 1300 762 219 [NEW ZEALAND] 09 306 1020



Version 3.5






www.tisira.com

CAUTION

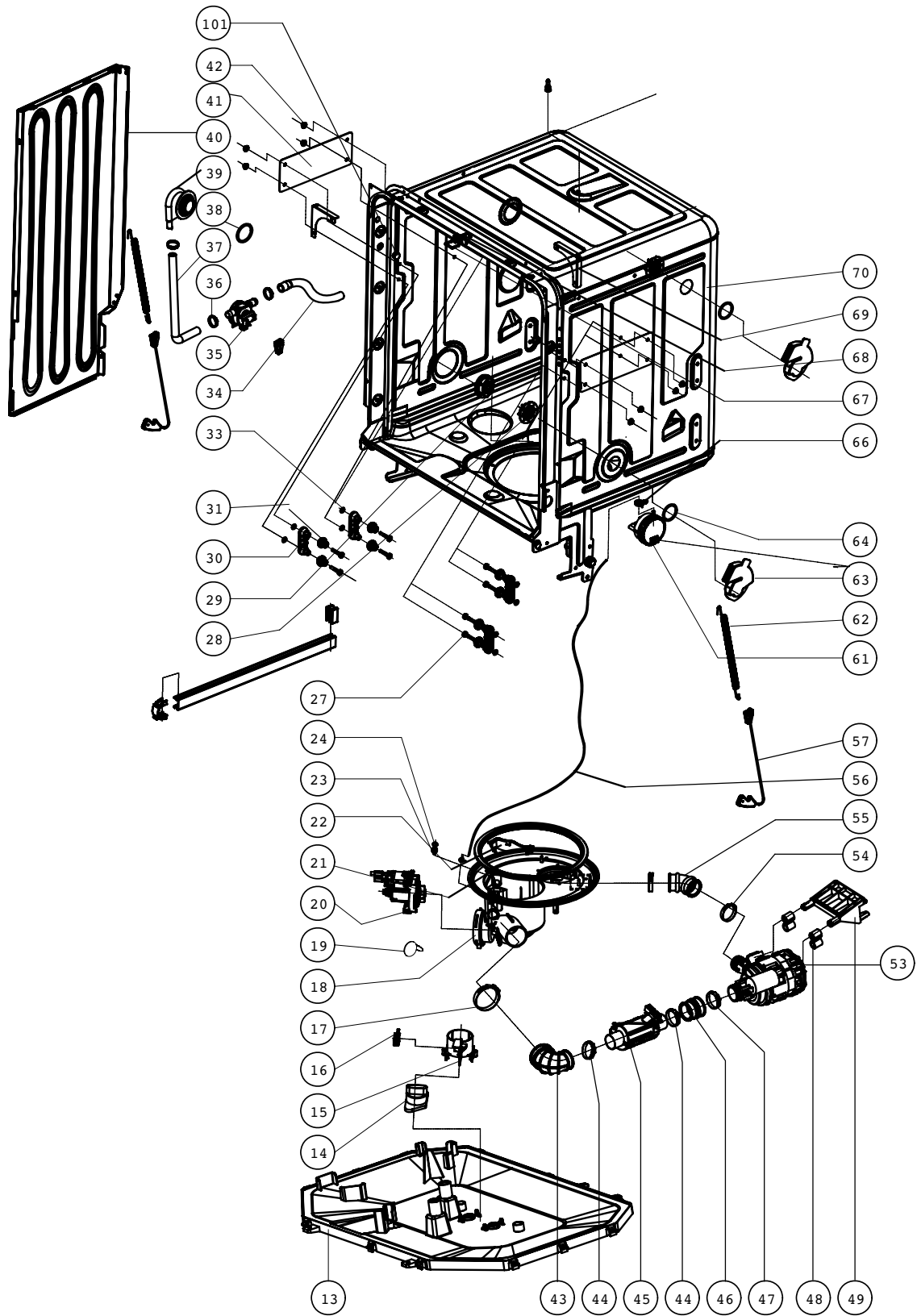
DISCONNECT POWER BEFORE SERVICING

Rated voltage / frequency	220-240V AC / 50Hz
Current	Max 10A
Installation	Freestanding
Place setting	12
Product dimensions (W x D x H)	600 x 600 x 845mm
Product weight:	38.7kg
Door finish	Stainless Steel, White
Control	Electronic
Rated power	1850W
Hot water connection	Max 60°C
Water pressure	0.04 - 1.00MPa
Operating time (Normal)	112 mins
Water consumption (Normal)	11.8L
Water supply flow rate	4.0L/min
Delay start function	YES

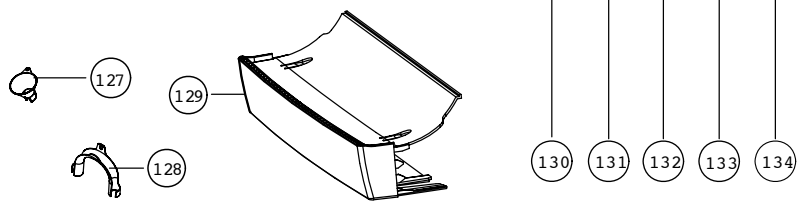
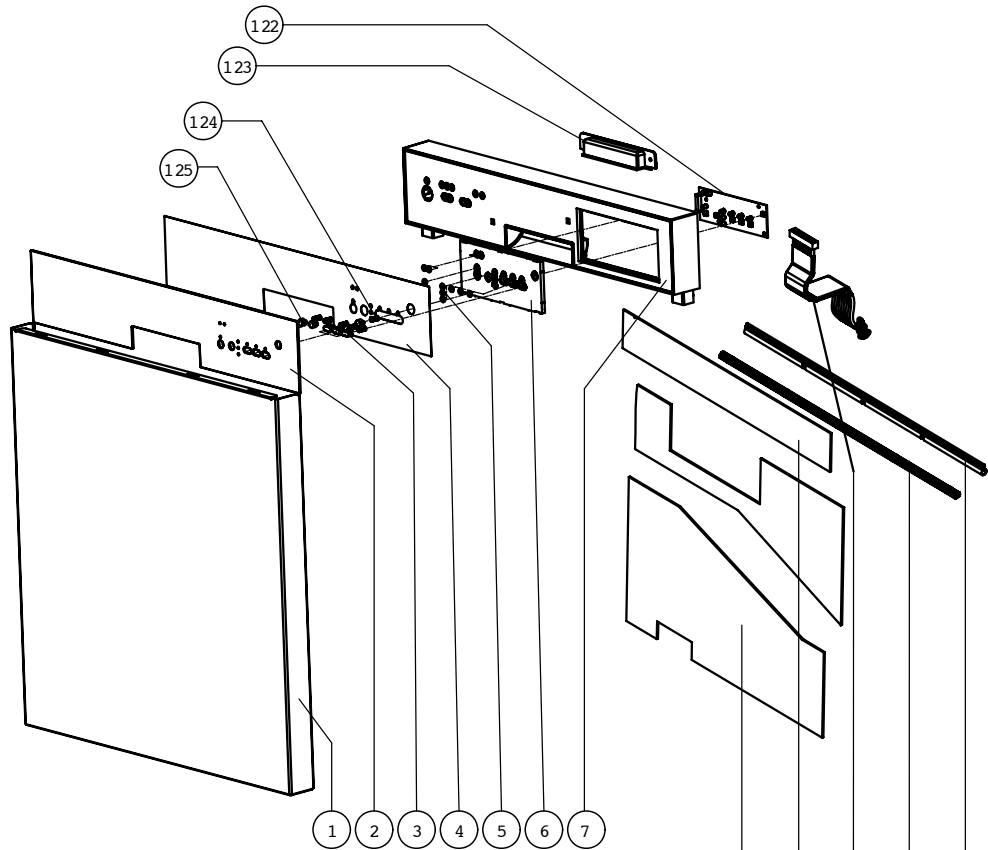
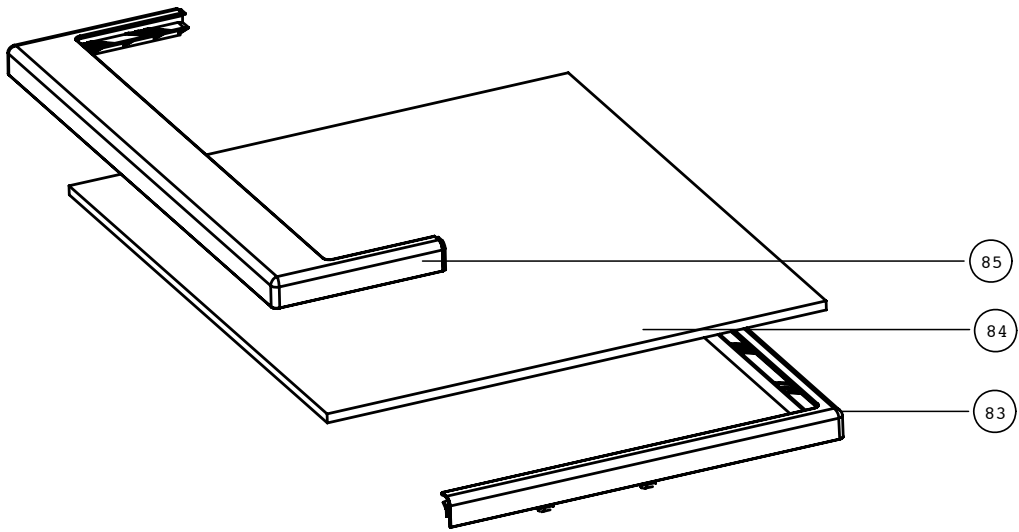
WASHING CYCLE TABLE

Program	Cycle Selection Information	Description of Cycle	Detergent Pre/Main	Running Time (min)	Energy (kWh)	Water (L)
 Intensive	For the heaviest soiled loads, such as pots, pans, casserole dishes and dishes that have been sitting with dried food on them for a while.	Pre-wash(40°C) Main wash(55°C) Rinse 1 Rinse 2 Hot rinse(65°C) Drying	5/25g	145	1.20	15.5
 Normal	For normally soiled loads, such as pots, plates, glasses and lightly soiled pans. standard daily cycle.	Main wash(45°C) Rinse Hot rinse(50°C) Drying	5/25g	112	0.73	11.8
 Rapid	A shorter wash for lightly soiled loads that do not need drying.	Main wash(40°C) Hot rinse(50°C)	15g	50	0.50	7.5

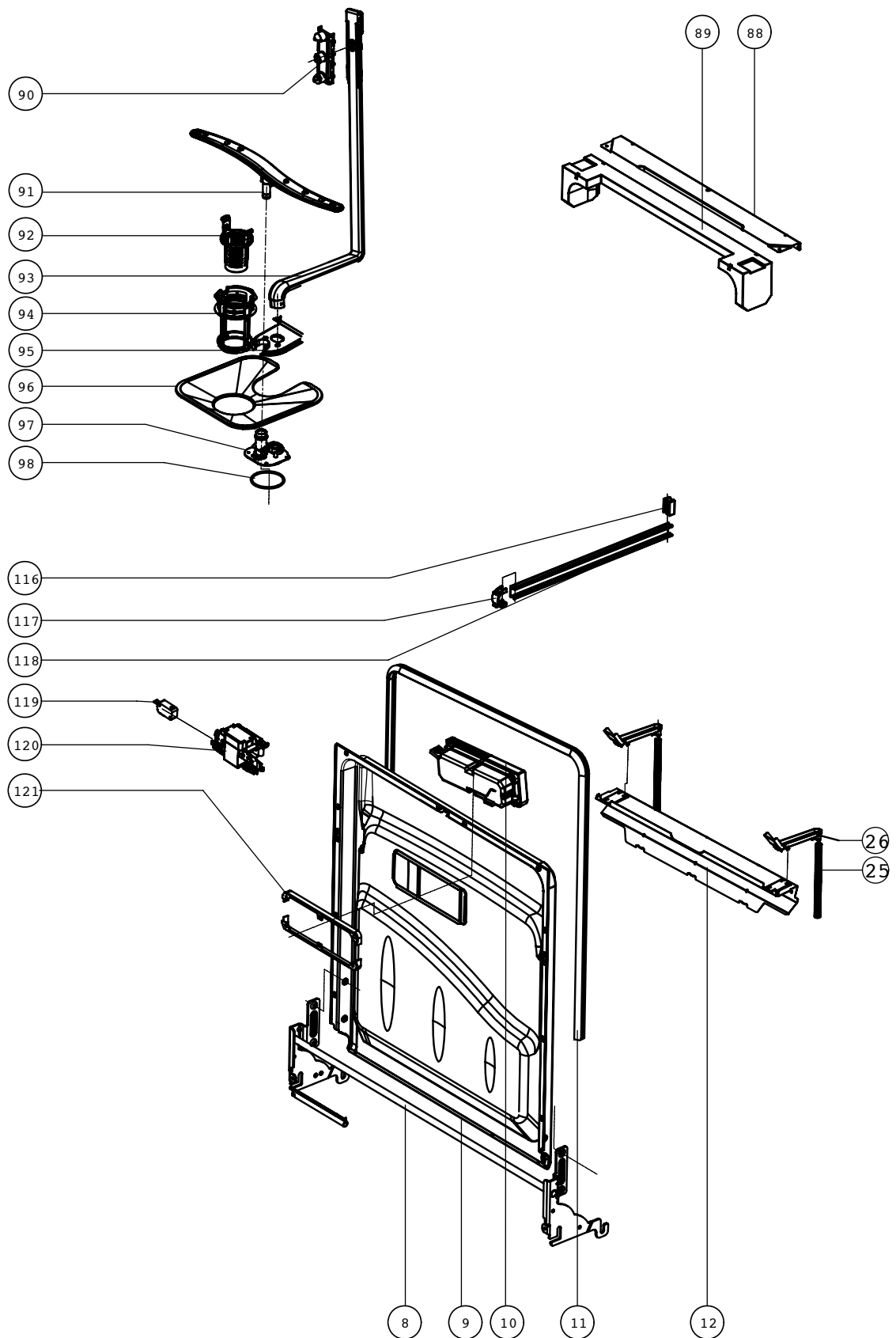
Exploded View



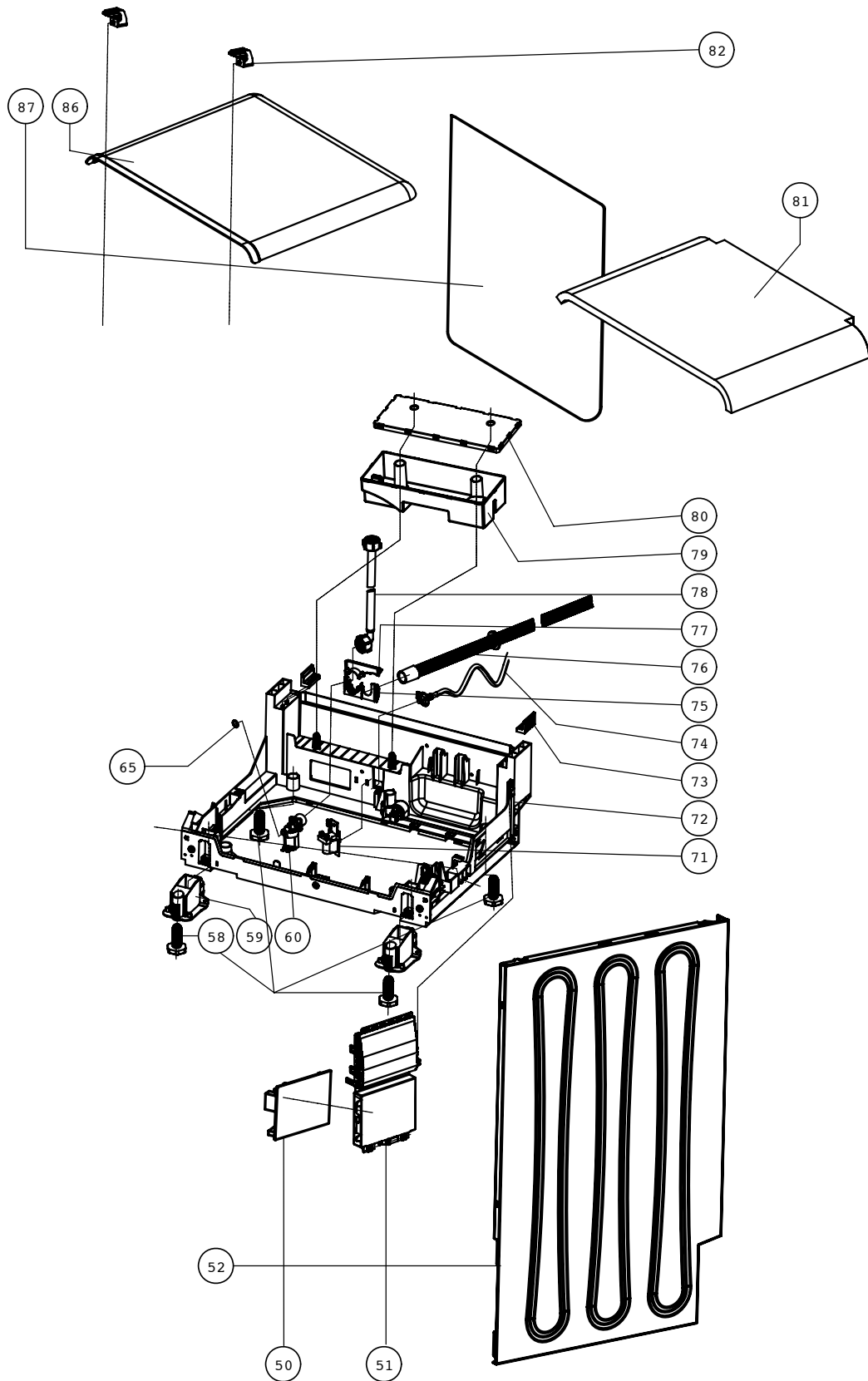
Exploded View



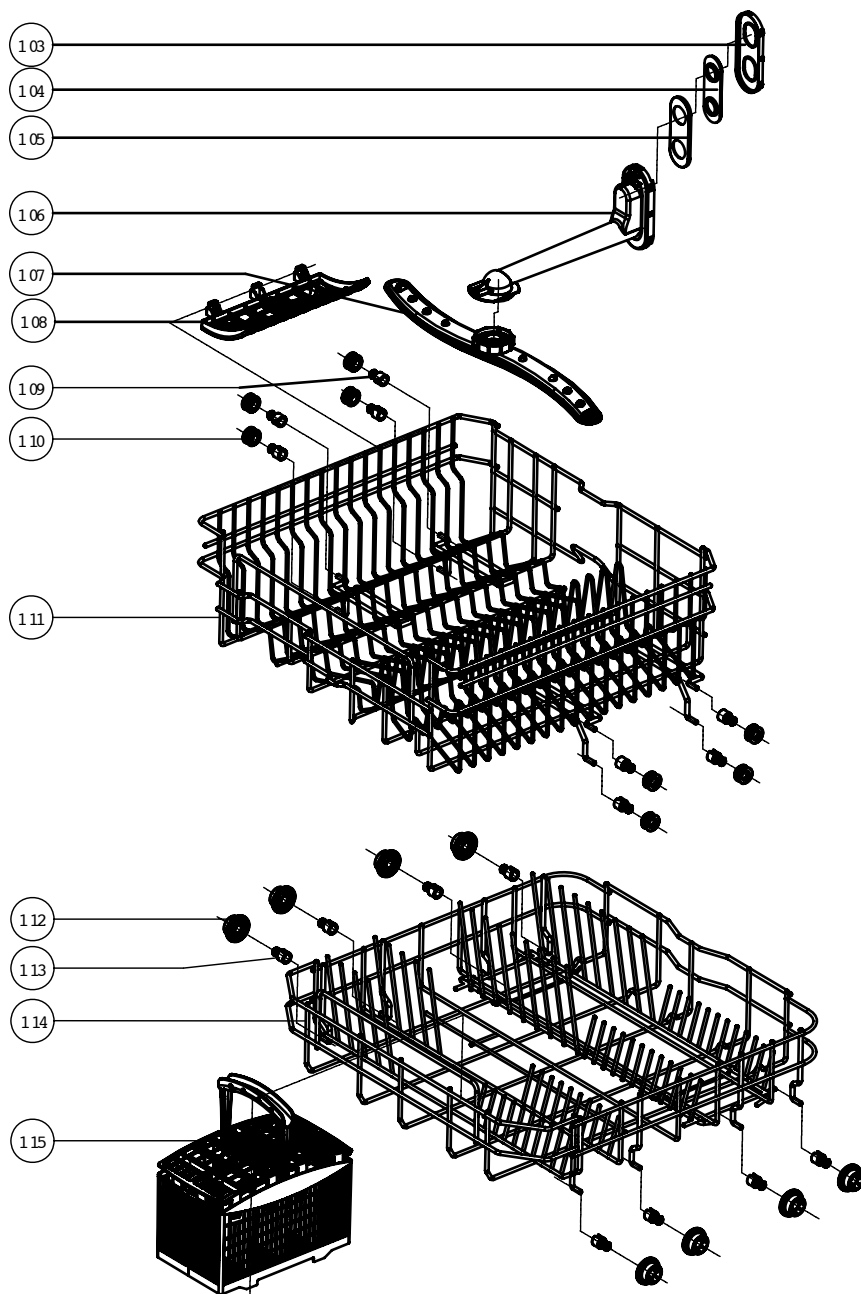
Exploded View



Exploded View



Exploded View



Parts List

ID	PART NUMBER	DESCRIPTION
1	2499100	Finish Door Panel
2	2499102	Control Panel Stainless Steel
3	2499402	Program Button (Grey 8C)
	2499483	Program Button (Silver SC-06002S)
5	2499422	Indicator LED Cap
6	2499419	Control Buttons holder
2,3,4 5,6,7	2499420	Control Panel Assembly (Grey 8C)
	2406400	Control Panel Assembly (Silver SC-06002S)
8	2499907	Hinge Assembly
9	2499101	Inner Door
10	2499000.401	Detergent Dispenser
11	2499000.901	Tub Gasket
12	2499000.103	Middle Front Crosspiece
13	2499421	Bottom Panel - Plastic Cover
14	2499000.403	Overflow Float
15	2499000.404	Overflow Holder
16	2499000.501	Overflow Microswitch
17	2499904	Hose Clamp (OTK500)
18	2499000.002	Sump Assembly
19	2499000.405	Block for Draining Pump
20	2499500	Draining Pump
21	2499000.406	Sump Seal
22	2499000.407	Sump Deflector
23	2499000.503	Temperature Sensor
24	2499403	Temperature Sensor Seal
25	2499000.700	Overflow Hose
26	2499000.409	Overflow Launder
27	2499503	Screw for Wheels Guide
28	2499000.411	Nut for Air Breaker
29	2499423	Nut for Water Breaker
30	2499404	Guide Holder
31	2499405	Guide Wheels
33	2499406	Guide Holder Seal
34	2499000.706	Inlet Hose for Flow Meter
35	2499000.914	Flowmeter
37	2499000.705	Inlet Hose for water Breaker
38	2499424	Seal for Air Breaker
39	2499000.912	Water Breaker
40	2499000.110	Left Side Panel (Grey 8C)
	2499109	Left Side Panel (Silver SC-06002S)
41	2499103	Wheels Guide Bracket
43	2499000.701	Rubber Tube for Heater
44	2499902	Hose Clamp (OTK381)

Parts List

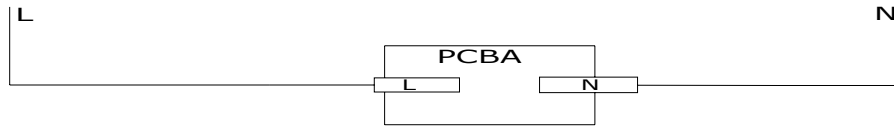
ID	PART NUMBER	DESCRIPTION
45	249900.504	Heating Unit
46	249900.702	Inlet Rubber Duct for Washing Pump
47	2499903	Hose Clamp (OTK396)
48	2499425	Motor Rubber Cushion
49	2499426	Washing Pump Bracket
50	2499501	Main PCBA
51	2499427	PCB Box
52	2499000.105	Right Side Panel (Grey 8C)
	2499110	Right Side Panel (Silver SC-060025)
53	2499000.506	Washing Pump
54	2499901	Hose Clamp (OTK361)
55	2499000.703	Outlet Rubber Duct for Washing Pump
56	2499700	Pressure Hose
57	2406004.908	Hinge Line
58	2406004.902	Adjustable Foot
59	2499428	Foot Rest
60	2499000.507	Water Inlet Valve
61	2499000.909	Pressure Switch
62	2499000.910	Door Spring
63	2499000.419	Air Breaker
64	2499000.420	Seal for Air Breaker
65	2499000.915	Hose Clamp (OTK175)
67	2499000.201	Door Lock Hook
68	2499000.202	Clasp Holder
69	2499000.106	Reinforce Support
71	2499000.508	Power Filter
72	2499429	Bottom Structure
73	2499430	Dumping Cushion for Inner Tub
74	2406004.502	Power Cord
75	2499431	Water Pipe Clamp
76	2499000.707	Draining Hose
77	2499000.423	Pipe Holder
78	2499000.708	Inlet Hose
79	2499432	Lower Cover of Balance Box
80	2499433	Upper Cover of Balance Box
82	2499000.427	Top Panel Holder
83	2499434	Back Roof (Grey 8C)
	2499484	Back Roof (Silver SC-06002S)
84	2499104	Top Panel (Grey 8C)
	2499111	Top Panel (Silver SC-06002S)
85	2499435	Front Roof (Grey 8C)
	2499485	Front Roof (Silver SC-06002S)
86	2499908	Bitumen for Tub Top Panel
87	2499909	Tub Backside Bitumen
88	2499000.429	Upper Rear Crosspiece

Parts List

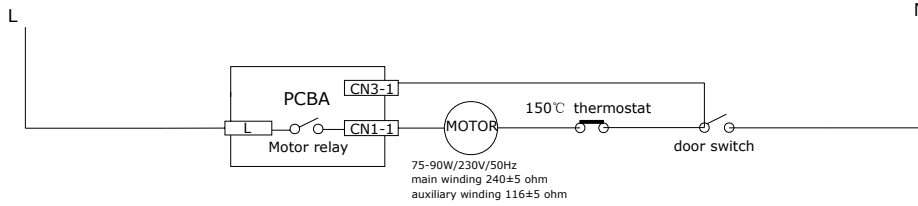
ID	PART NUMBER	DESCRIPTION
89	2499910	Pad for Upper Rear Crosspiece
90	2499504	Pipe Casing
91	2499400	Lower Sprayer Assembly
92	2499407	Extractable Cup Filter
93	2499408	Inner Pipe
94	2499409	Micro Filter
95	2499436	Filler Support
96	2499410	Flat Filter
97	2499411	Watershed
98	2499000.439	Seal for Watershed
101	2499000.413	Hole Plug
103	2499437	Upper Sprayer pipe Holder
104	2499438	Matching Seal
105	2499439	Matching Piece
106	2499412	Upper Sprayer Pipe Assembly
107	2499911	Upper Sprayer Assembly
108	2499440	Cup Rack
113&109	2499505	Upper Basket Wheel Holder
110	2499413	Wheels Assembly of Upper Basket
111	2499905	Upper Basket Assembly
112	2499000.451	Wheels of Lower Basket
114	2499906	Lower Basket Assembly
115	2499401	Cutlery Basket
116	2499414	Basket Guide Rear Block
117	2499415	Basket Guide Front Block
118	2499200	Upper Basket Guide
119	2406004.503	Door Microswitch
121	2499441	Dispenser Holder
120	2499000.004	Door Lock Assembly
122	2499502	Display PCBA
123	2499416	Plastic Handle (Grey 8C)
	2499486	Plastic Handle (Silver SC-06002S)
124	2499507	Spring for Button
125	2499417	Power Button (Grey 8C)
	2499487	Power Button (Silver SC-06002S)
127	2499418	Salt Funnel
128	2499442	Draining Hose Hanger
129	249900.461	Baseboard (Grey 8C)
	2499488	Baseboard (Silver SC-06002S)
132	2499510	Flat Cable (control panel)
134	2406004.901	Lower Seal of Inner Door

Wiring Diagram

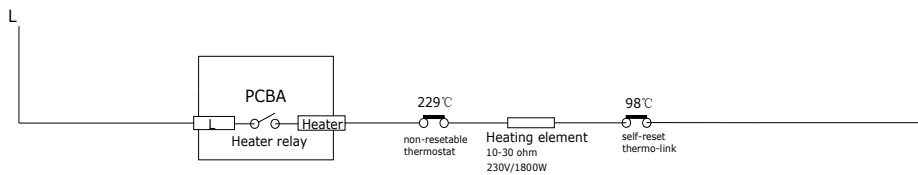
POWER UP



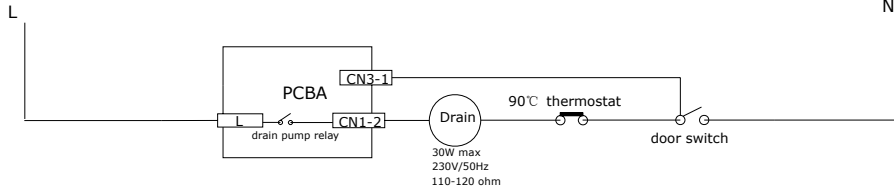
WASHING MOTOR



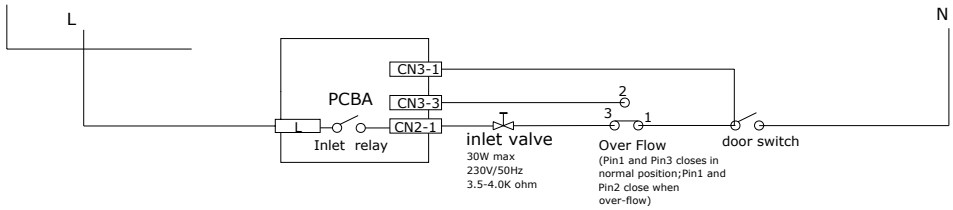
HEATER ELEMENT



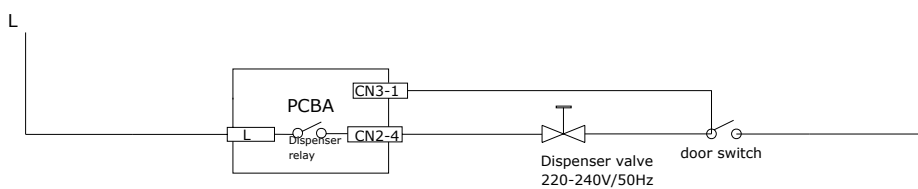
DRAIN PUMP



FILL AND OVERFLOW



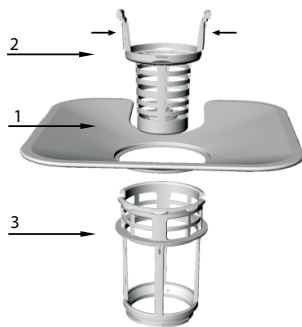
DISPENSER



FILTERING SYSTEM

The filter is used to avoid the big remnants and other sundries getting inside the pump. Sometimes, an extra deposit of residues can obstruct the water flow.

The filter system consists of a coarse filter, a flat (Main filter) and a micro filter (fine filter).



1. Flat filter - Food and debris will be trapped by a jet on the lower spray arm.
 2. Coarse filter - Big debris, such as bone and glass that could clog the drain will be trapped in the coarse filter.
 3. To remove an item caught in this filter, gently squeeze the tabs on the top of this filter and lift it out.
 4. Micro filter - This filter holds soil and food residue in the sump area and prevents it from being redeposited on the dishes during a cycle.
- Inspect the filters for obstructions every time the dishwasher has been used.
 - By unscrewing the coarse filter, you can remove the filter system. Remove any food remnants and clean the filters under running water.

STEP 1 // Rotate the coarse filter anti-clockwise, filter, and then lift it up;



STEP 2 // lift the flat filter up

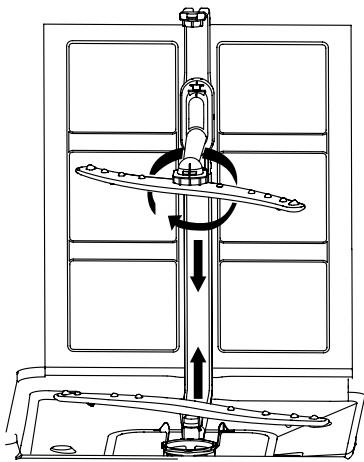


Repeat the steps in reverse to reinstall the filtering system.

FILTER ASSEMBLY

The filter assembly should be cleaned once a week with a brush. Then, reassemble the filter parts as shown in the figures above and reinsert the assembly in the dishwasher, positioning in its seat and pressing downward. Improper replacement of the filter may reduce the performance level of the appliance and damage dishes and utensils.

WARNING // Never run the dishwasher without the filters in place.



CLEANING THE SPRAY ARMS

It is necessary to clean the spray arms regularly to ensure efficient operation of the spray arm jets and bearings.

To remove the spray arms, screw off the nut clockwise to take out the washer on top of the spray arm and remove the arm. Wash the arms in warm soapy water and use a soft brush to clean the jets. Rinse thoroughly and replace.

CLEANING THE DISHWASHER

To clean the exterior and rubber parts of the dishwasher, do not use solvents or abrasive cleaning products. Use only a cloth and warm soapy water. To remove spots or stains from the surface of the interior, use a cloth dampened with water and a little white vinegar, or a cleaning product made specifically for dishwashers.

AFTER EVERY WASH

After every wash, leave the door slightly ajar so that moisture and odours are not trapped inside.

REMOVE THE PLUG

Before cleaning or performing maintenance, always remove the plug from the socket.

WHEN YOU GO ON HOLIDAY

When you go on holiday, it is recommended that you run a wash cycle with the dishwasher empty and then remove the plug from the socket, turn off the water supply and leave the door of the appliance slightly ajar. This will help the seals last longer and prevent odours from forming in the appliance.

TO REMOVE SPOTS FROM GLASSWARE:

1. Take out all metal utensils out of the dishwasher.
2. Do not add detergent.
3. Choose the longest cycle.
4. Start the dishwasher and allow it to run for about 18 to 22 minutes, then it will be in the main wash.
5. Open the door to pour 2 cups of white vinegar into the bottom of the dishwasher.
6. Close the door and let the dishwasher complete the cycle. If the vinegar does not work: Repeat as above, except use 1/4 cup (60 ml) of citric acid crystals instead of vinegar.

MOVING THE APPLIANCE

If the appliance must be moved, try to keep it in the vertical position. If absolutely necessary, it can be positioned on its back.

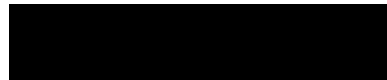
SEALS

One of the factors that cause odours to form in the dishwasher is food that remains trapped in the seals. Periodic cleaning with a damp sponge will prevent this.

TROUBLESHOOTING TABLE

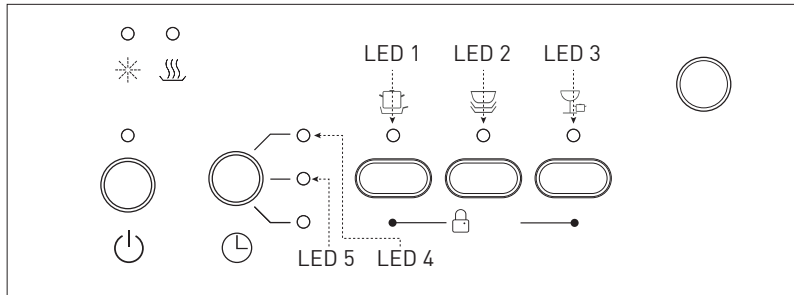
PROBLEM	POSSIBLE CAUSES	WHAT TO DO
Dishes and flatware not clean	Improper program Improper basket loading	Select a stronger programme Make sure that the action of the detergent dispenser and spray arms are not blocked by large dishware.
Cloudiness on glassware	Combination of soft water and too much detergent	Use less detergent if you have soft water and select a shortest cycle to wash the glassware and to get them clean.
Yellow or brown film on inside surfaces	Tea or coffee stains	Using a solution of 1/2 cup of bleach and 3 cups of warm water to remove the stains by hand. WARNING // You have to wait for 20 minutes after a cycle to let the heating elements cool down before cleaning interior; otherwise, burns will happen.
	Iron deposits in water can cause an overall film	You have to call a water softener company for a special filter.
White film on inside surface	Hard water minerals	To clean the interior, use a damp sponge with dishwasher detergent and wear rubber gloves. Never use any other cleaner than dishwasher detergent for the risk of foaming or suds
The detergent dispenser lid cannot be closed properly	Clogged detergent residue is blocking the catch	Clean the detergent from the catch.
Detergent left in dispenser cups	Dishes block detergent cups	Re-loading the dishes properly.
Black or gray marks on dishes	Aluminum utensils have rubbed against dishes	Use a mild abrasive cleaner to eliminate those marks.
Dishwasher leaks	Overfill dispenser or rinse aid spills	Be careful not to overfill the rinse aid dispenser. Spilled rinse aid could cause oversudsing and lead to overflowing. Wipe away any spills with a damp cloth.
	Dishwasher isn't level	Make sure the dishwasher is level.
Stained tub interior	Detergent with colorant was used	Make sure that the detergent is the one without colorant.

WARNING! // If overflow occurs, turn off the main water supply before calling a service. If there is water in the base pan because of an overfill or small leak, the water should be removed before restarting the dishwasher.



TROUBLESHOOTING TABLE

PROBLEM	POSSIBLE CAUSES	WHAT TO DO
Dishwasher doesn't run	Fuse blown, or the circuit breaker acted	Replace fuse or reset circuit breaker. Remove any other appliances sharing the same circuit with the dishwasher.
	Power supply is not turned on	Make sure the dishwasher is turned on and the door is closed securely. Make sure the power cord is properly plugged into the wall socket.
	Water pressure is low	Check that the water supply is connected properly and the water is turned on.
Drain pump doesn't stop	Overflow	The system is designed to detect an overflow. When it does, it shuts off the circulation pump and turns on the drain pump.
Noise	Some audible sounds are normal	Sound from detergent cup opening.
	Utensils are not secure in the baskets or something small has dropped into the basket	To ensure everything is secured in the dishwasher.
	Motor hums	Dishwasher has not been used regularly. If you do not use it often, remember to set it to fill and pump out every week, which will help keep the seal moist.
Suds in the tub	Improper detergent	Use only the special dishwasher detergent to avoid suds. If this occurs, open the dishwasher and let suds evaporate. Add 1 gallon of cold water to the tub. Close and latch the dishwasher, then start the "soak" wash cycle to drain out the water... Repeat if necessary.
	Spilled rinse agent	Always wipe up rinse agent spills immediately.



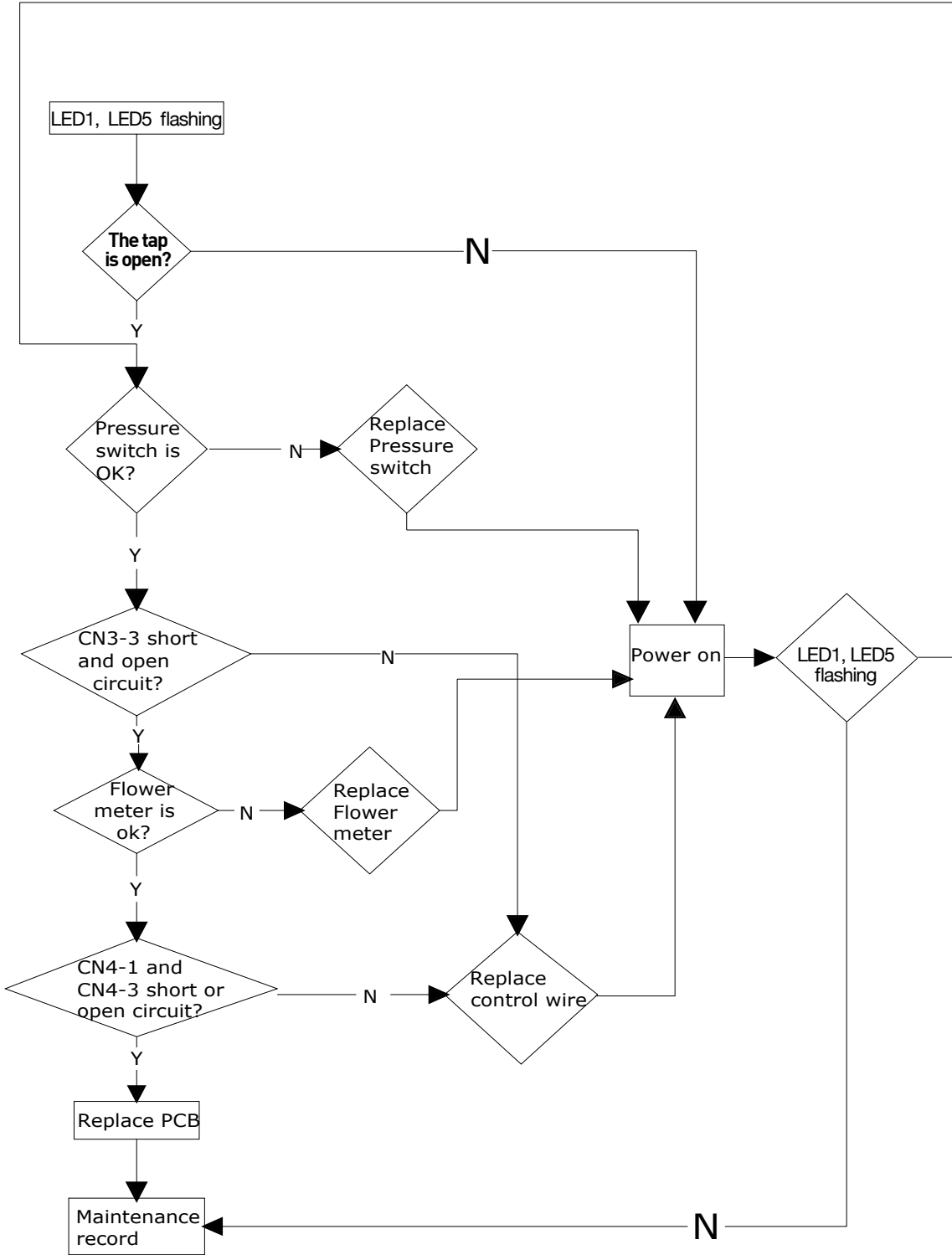
Detailed view of LED indicators. Reference for Trouble Shooting Section.

ERROR CODES

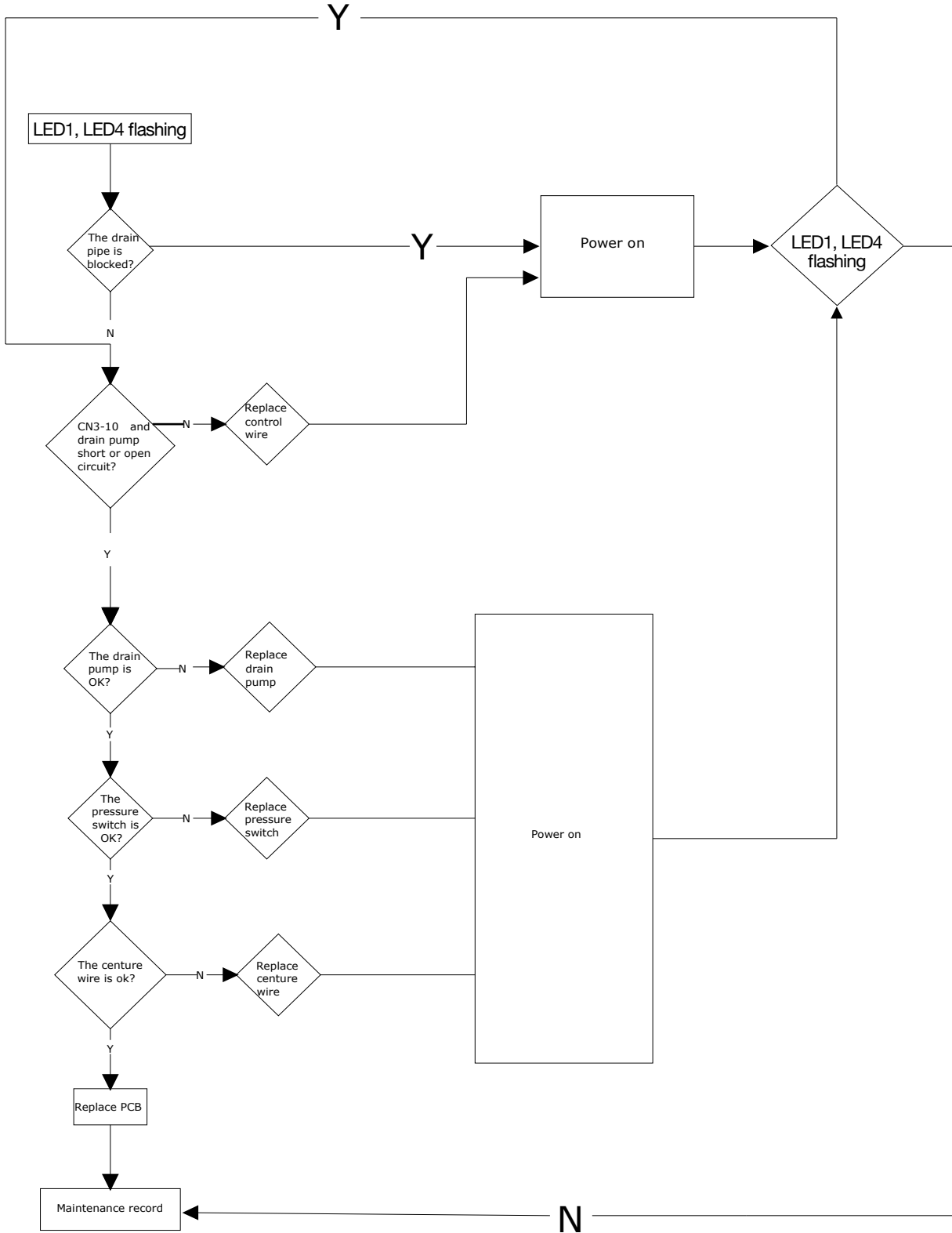
When some malfunctions happen, the appliance will display error codes to warn you.

CODES	MEANINGS	POSSIBLE CAUSES
LED1 LED2 flashing	Door open	The door is opened when the dishwasher is operating
LED1 LED5 flashing	Water inlet	Water inlet malfunction
LED1 LED4 flashing	Water drainage	Water drainage malfunction
LED2 LED3 flashing	Temperature sensor	Temperature sensor malfunction
LED2 LED4 flashing	Overflow/leakage	Overflow occurs/Water leakage occurs
LED3 LED4 flashing	Water leakage	Water leakage occurs
LED3 LED5 flashing	Heating element	Abnormal heating

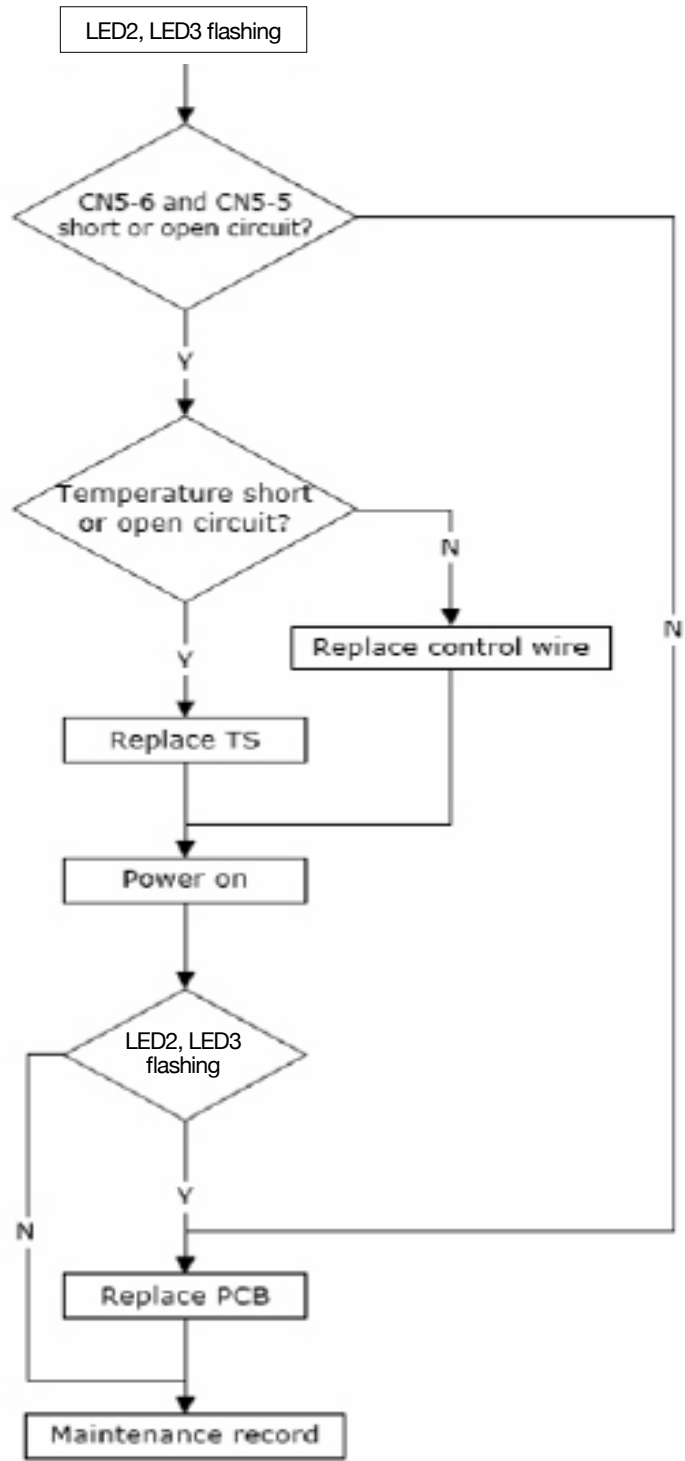
WATER INLET MALFUNCTION



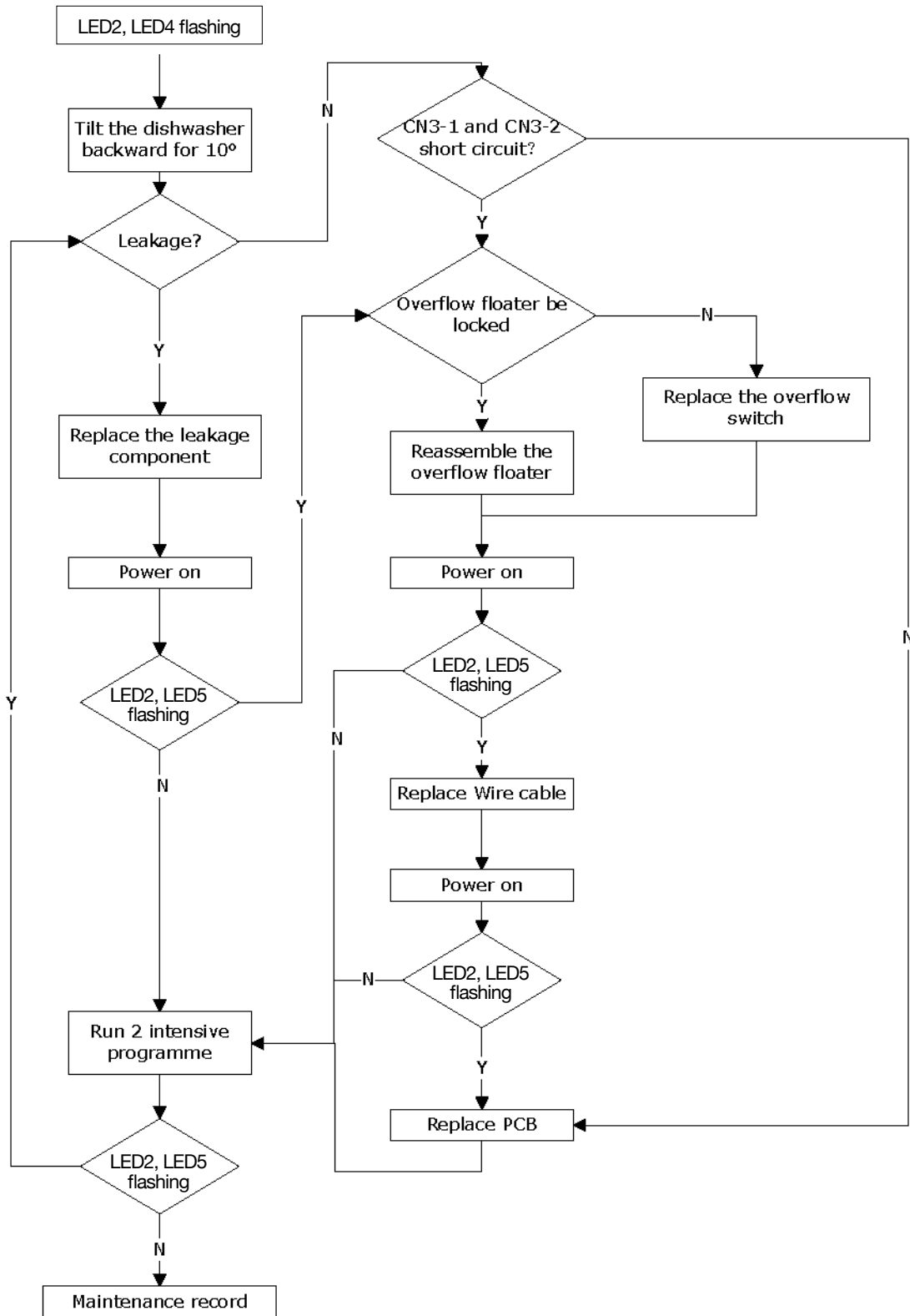
WATER DRAINAGE MALFUNCTION



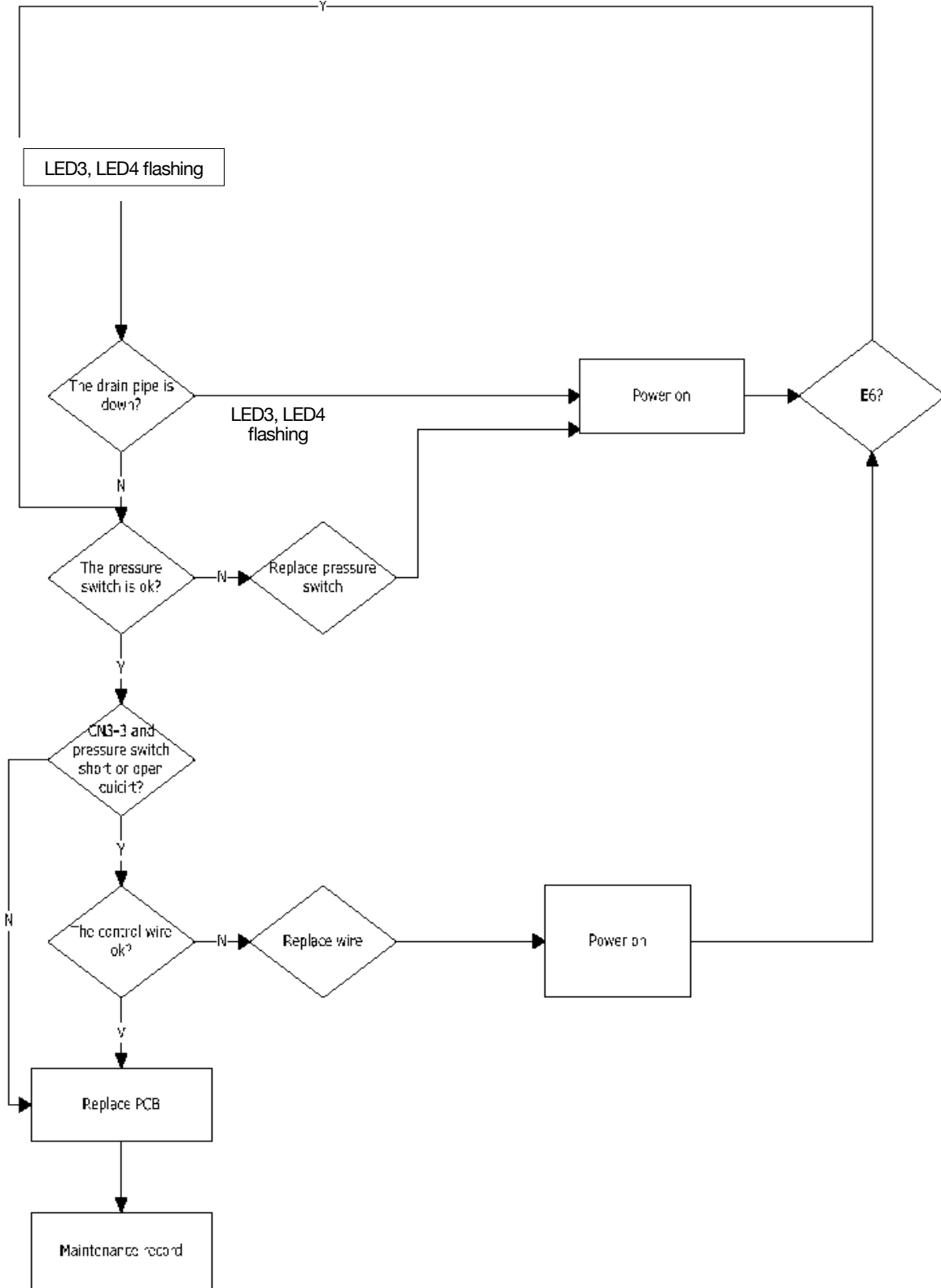
TEMPERATURE MALFUNCTION



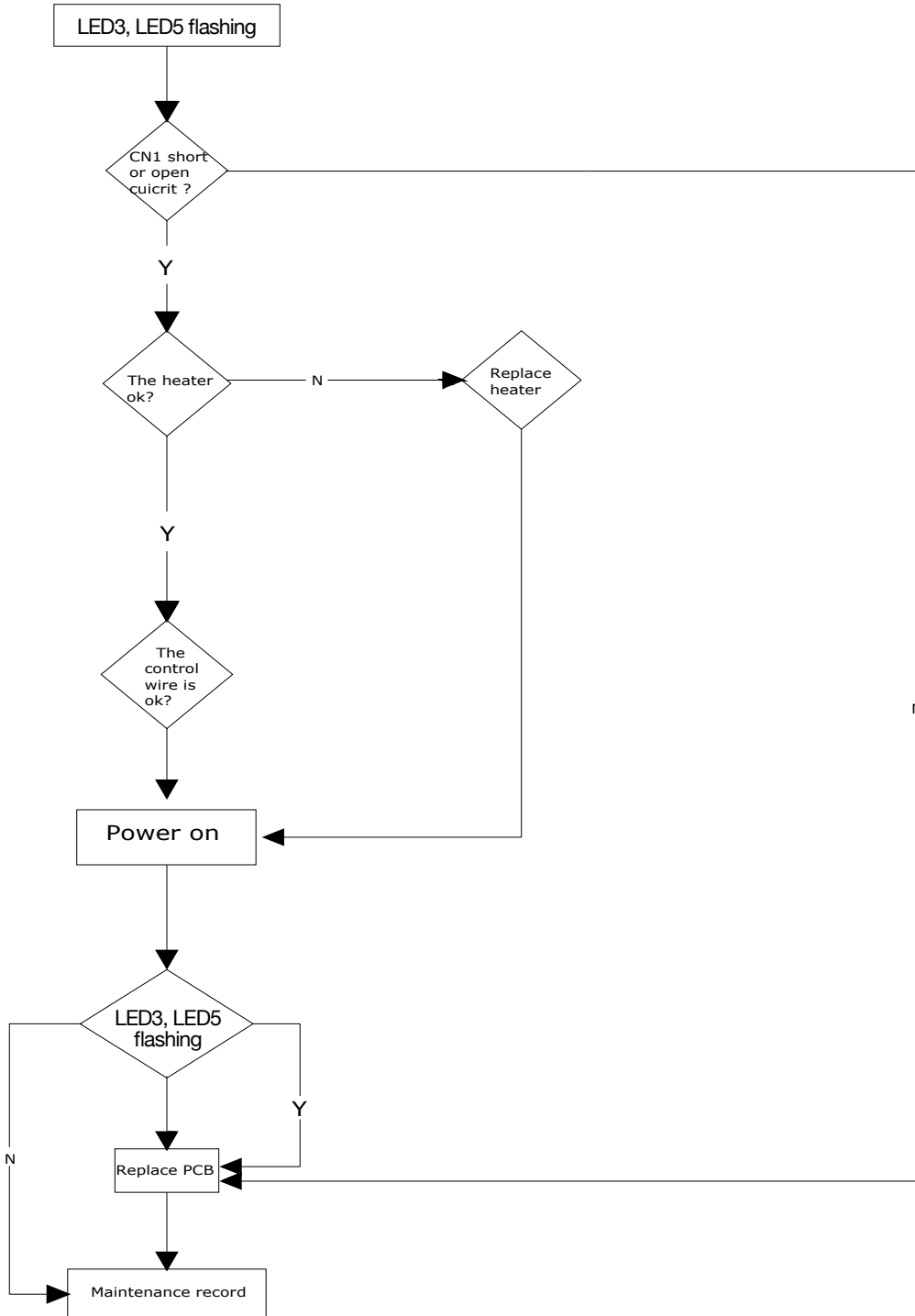
OVERFLOW MALFUNCTION



WATER LEAKAGE MALFUNCTION



HEATING ELEMENT MALFUNCTION





CONTACT DETAILS

AUSTRALIA
ARISIT PTY LIMITED

40-44 Mark Anthony Drive,
Dandenong South, VIC 3175,
Australia

P // 1300 762 219
F // 03 9768 0838
consumer.care@arisit.com

NEW ZEALAND
ARISIT PTY LIMITED

PO Box 68-140
Newton, Auckland 1145,
New Zealand

P // 09 306 1020
F // 09 302 0077
sales@aristonappliances.co.nz

Tisira is committed to ongoing research and development. Every effort has been made to ensure all information in this service manual is correct at time of going to print. Dimensions should be used as a reference only and actual dimensions should be taken from the physical product only.

Manufacturer reserves the right to change specifications without notice.

 **tisira**

Version 3.3



www.tisira.com