



SERVICE MANUAL

12 PLACE // DISHWASHER

TDW12AX

DISCLAIMER // THE INFORMATION CONTAINED IN THIS SERVICE MANUAL IS INTENDED FOR LICENSED PERSONNEL ONLY. PLEASE CONTACT ARISIT FOR FUTHER INFORMATION [AUST] 1300 762 219 [NEW ZEALAND] 09 306 1020



Version 1.1



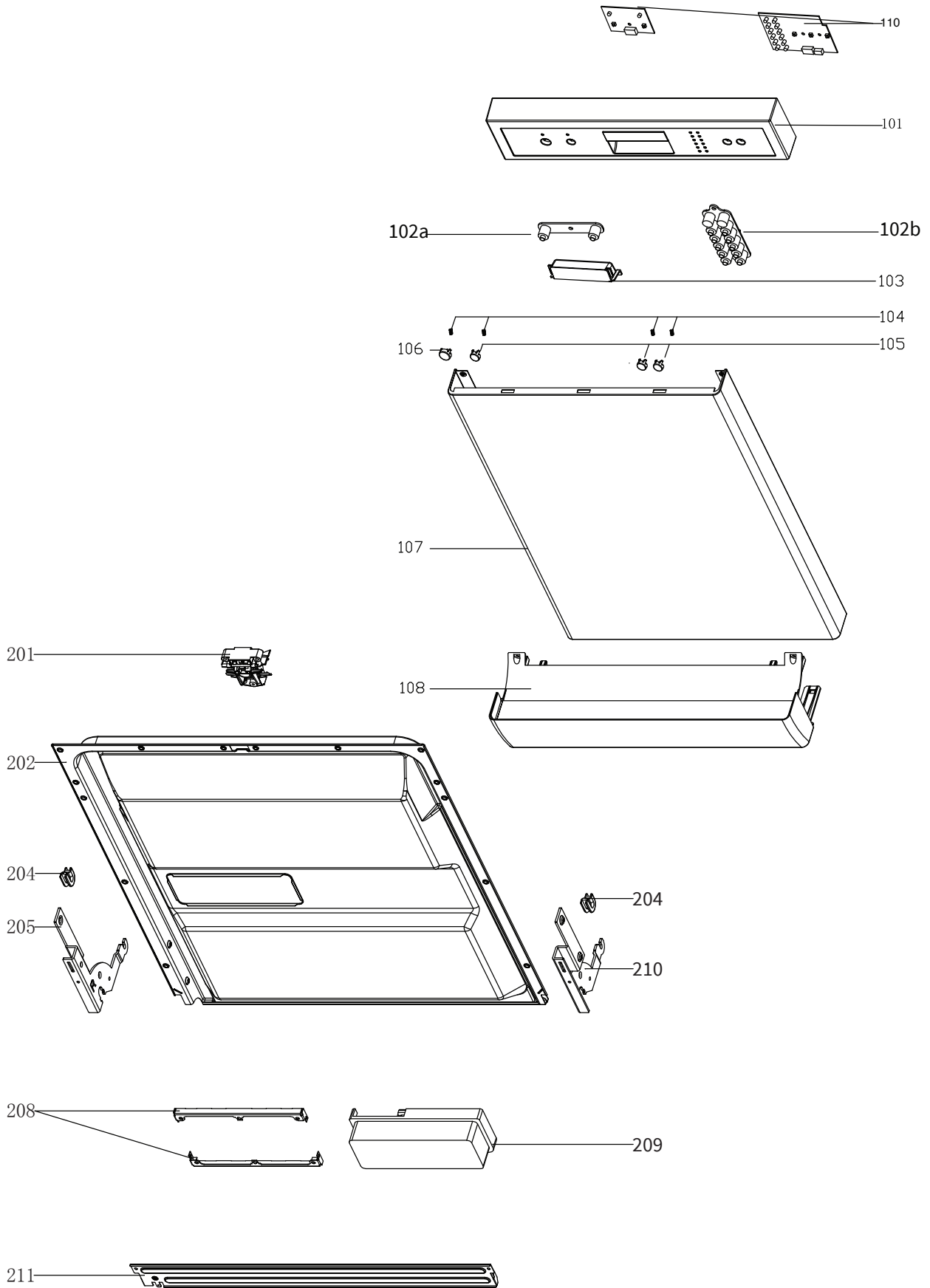
www.tisira.com

CAUTION

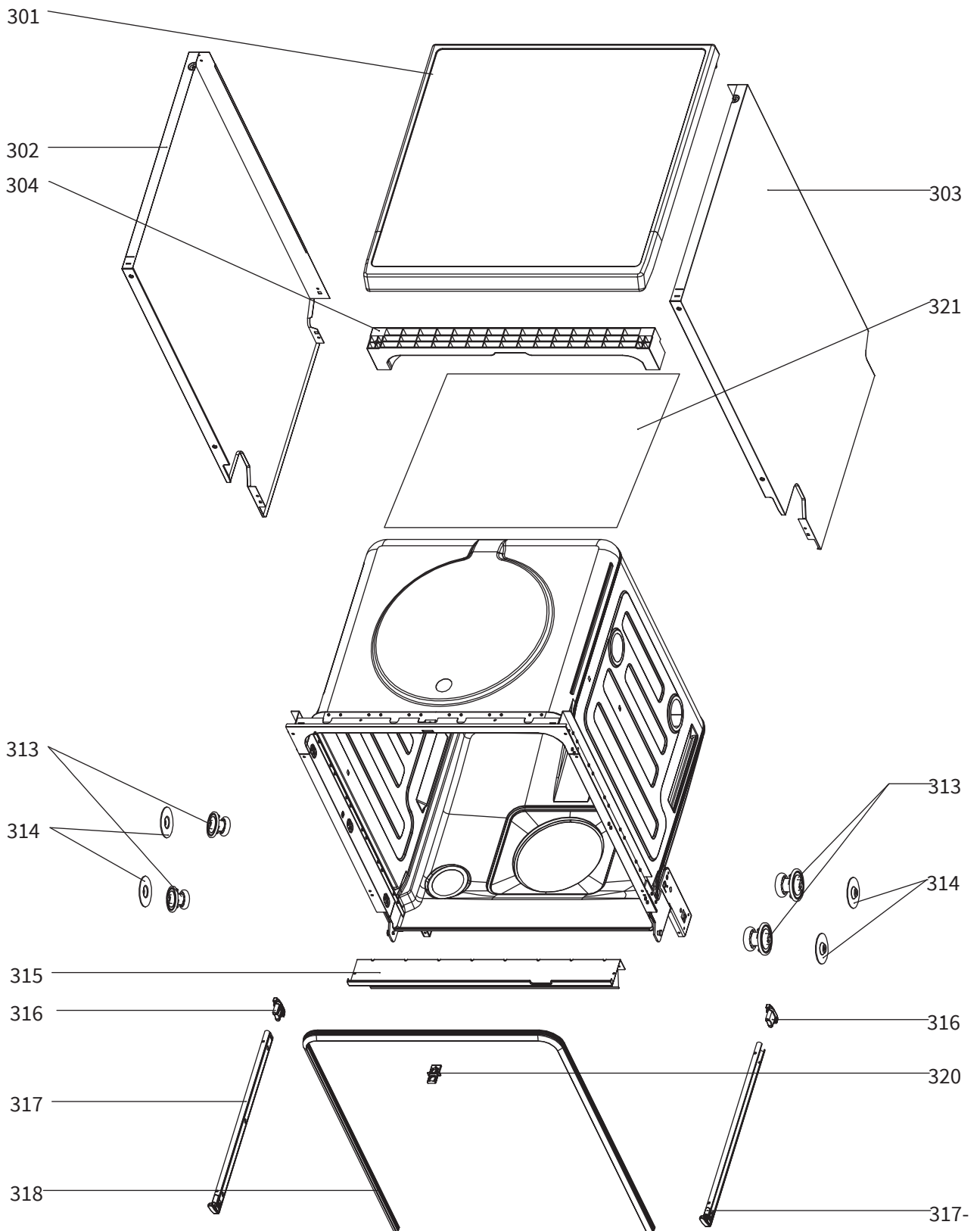
DISCONNECT POWER BEFORE SERVICING

Rated voltage / frequency	220-240V AC / 50Hz
Current	Max 10A
Installation	Freestanding
Place setting	12
Product dimensions (W x D x H)	600 x 600 x 845mm
Product weight:	39.5kg
Door finish	Stainless Steel, White
Control	Electronic
Rated power	1760 - 2100W
Hot water connection	Max 60°C
Water pressure	0.04 - 1.00MPa
Operating time (Normal)	171 mins
Water consumption (Normal)	10.2L

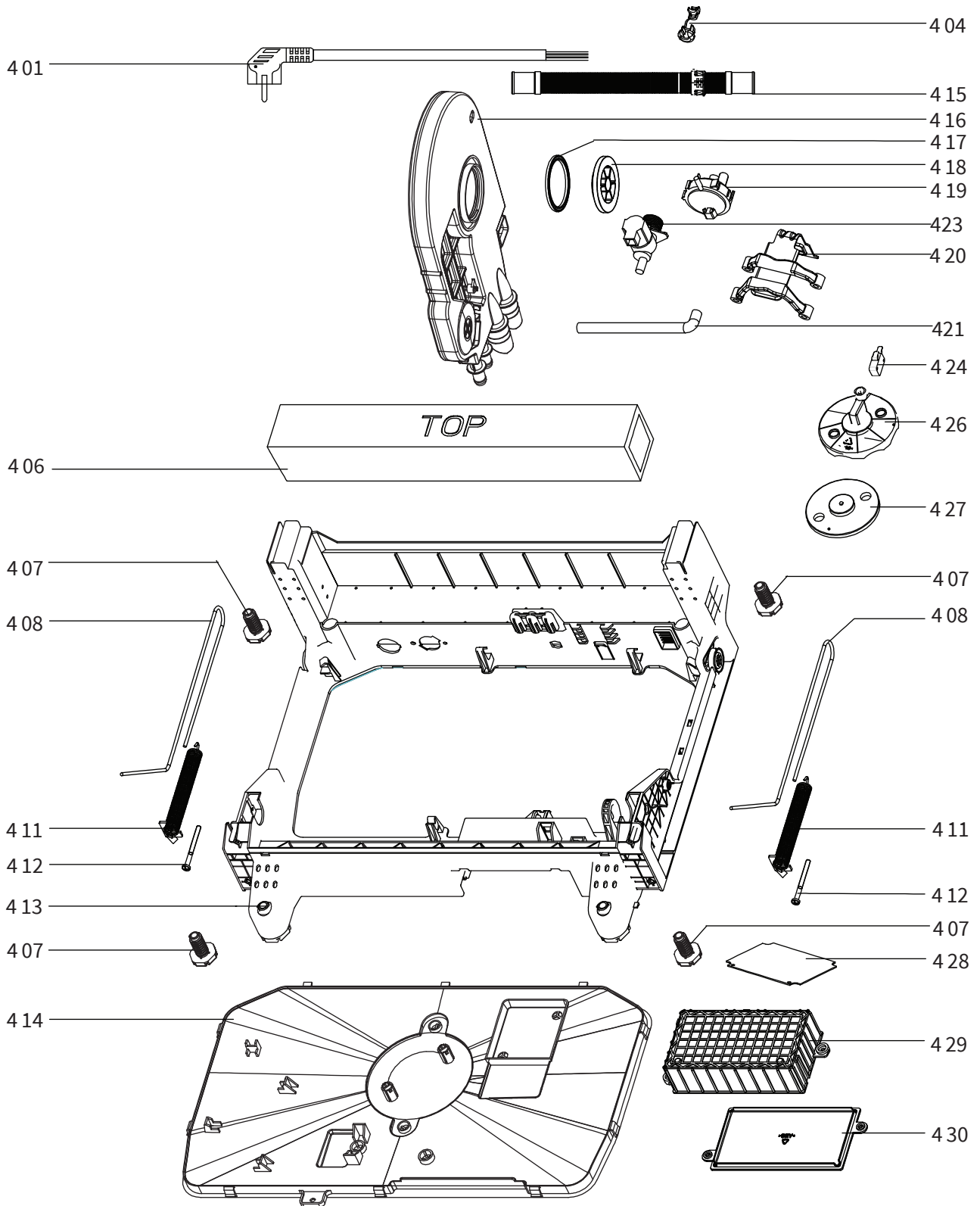
Exploded View



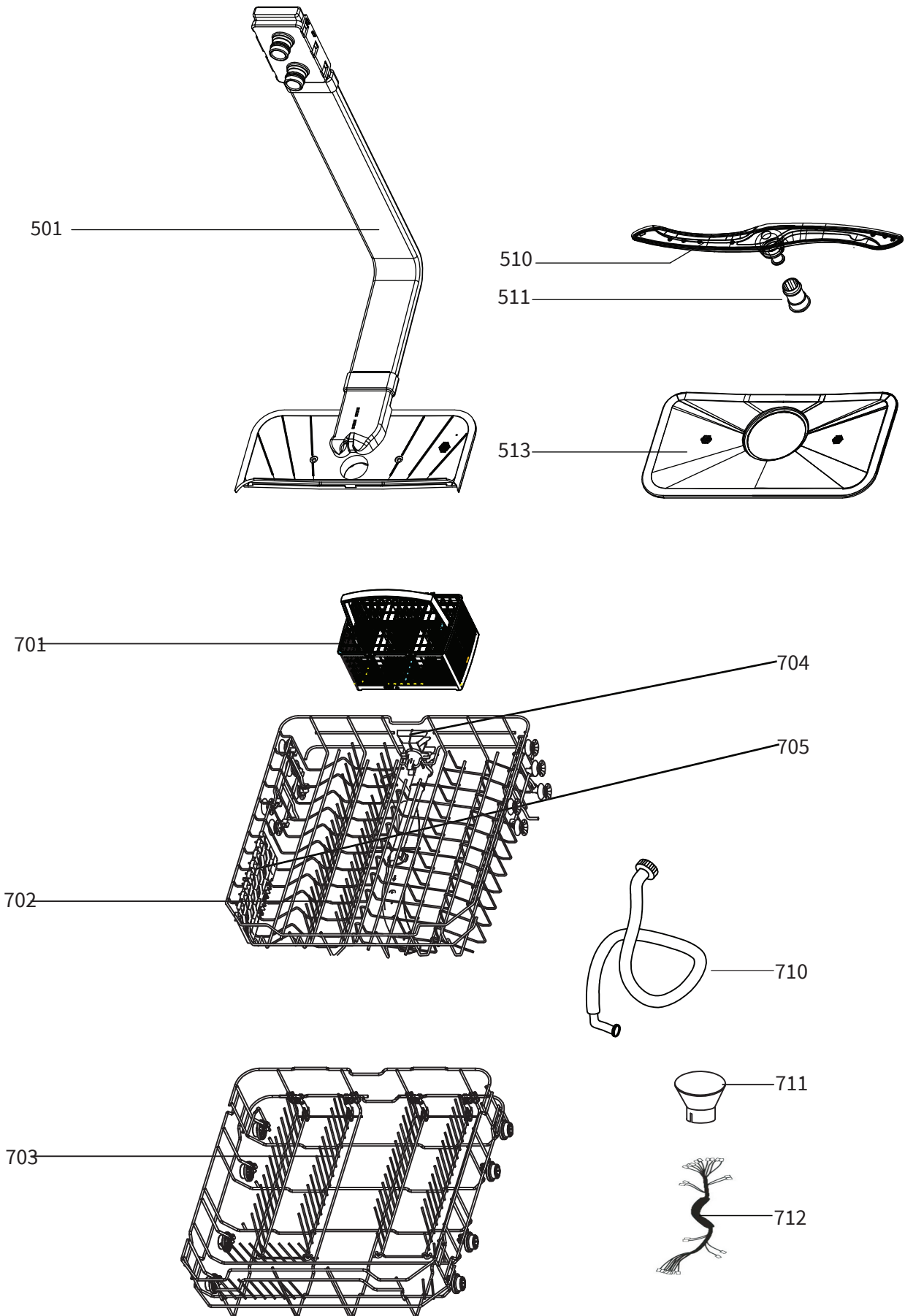
Exploded View



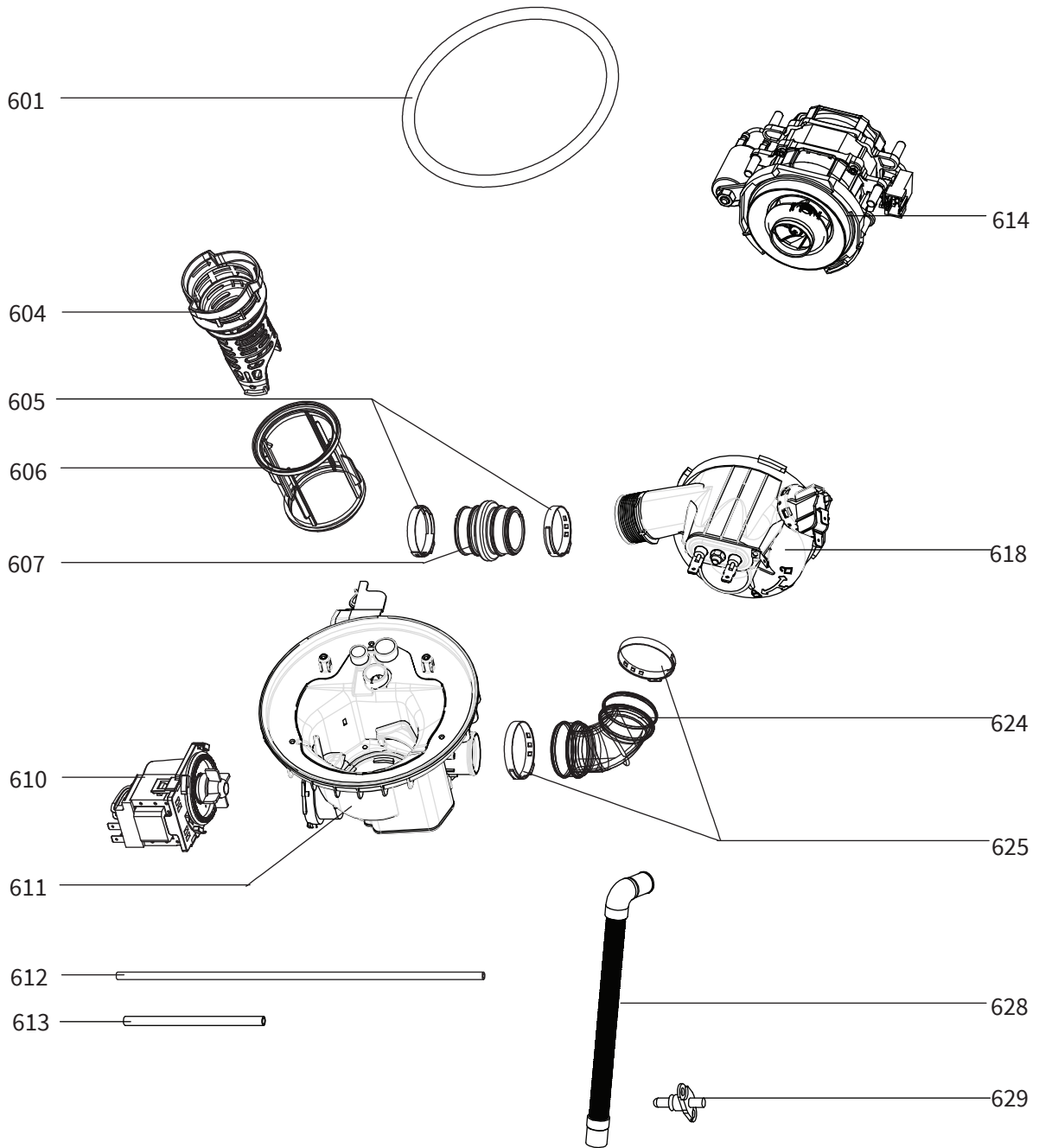
Exploded View



Exploded View



Exploded View



Parts List

ID	PART NUMBER	DESCRIPTION
101	2406402	Control Panel - Tisira
102a	2499498	Light cover for power and extra dry indicators
102b	2499499	Light cover for programs and status indicators
103	2498400	Plastic handle
104	2499209	Button spring
105	2401428	Button
106	2401429	Power button
101 - 106	2406404	Control Panel Assembly - Tisira
107	2499114	Finish door panel
108	2498401	Baseboard
110	2499527	Control boards
201	2499924	Door lock assembly
202	2499115	Inner door
204	2499202	Hinge clamp
205	2499914	Left hinge assembly
208	2499116	Dispenser bracket
209	2499925	Detergent dispenser
210	2499915	Right hinge assembly
211	2499117	Hinge crossbar
301	2498402	Top panel
302	2499118	Left side panel
303	2499119	right side panel
304	2498403	Upper back crosspiece
313	2499469	Wheel - upper basket track
314	2499470	Washer for wheels of upper basket track
315	2499926	Noise insulation top board
316	2499471	Stopper cap - upper basket track
317	2499206	wheel track - upper basket (left)
317-a	2499207	wheel track - upper basket (right)
318	2499472	Cavity seal - U shape
320	2499210	Door lock hook
321	2499927	Back cover
401	2499518	Flexible supply cord and plug (AUS - 10A)
404	2498404	Clamp for flexible supply cord
406	2499928	Counterweight
407	2498405	Adjustable foot
408	2499929	Hinge line
411	2499211	Door spring assembly
412	2499208	Adjusting screw of hinge spring

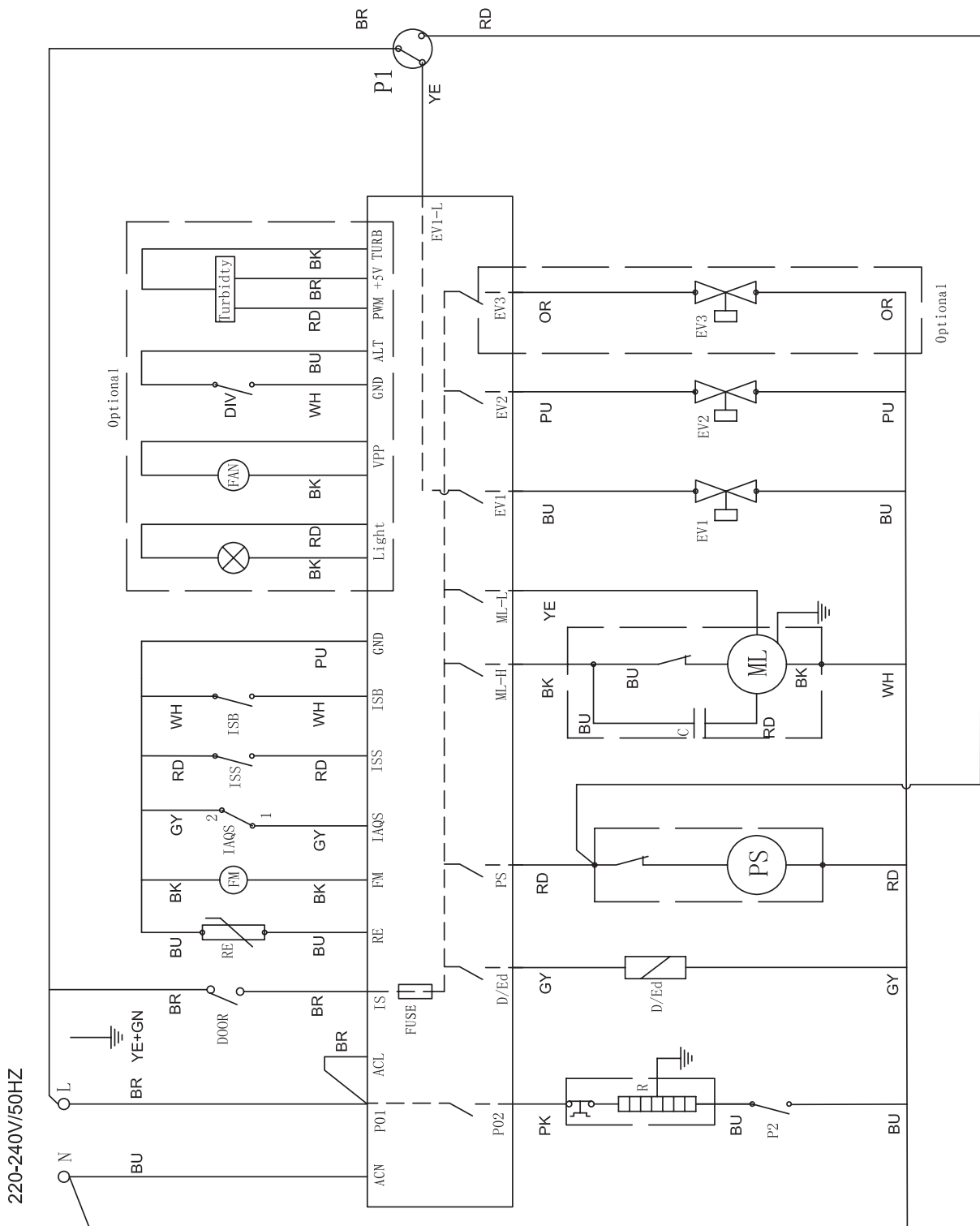
Parts List

ID	PART NUMBER	DESCRIPTION
413	2498406	Bottom structure
414	2498407	Overflow tray
415	2499701	Drain hose assembly
416	2499917	Air breather assembly
417	2499473	Ring seal - air breaker nut
418	2499474	Air breaker nut
419	2499519	Pressure switch
420	2499212	Motor bracket assembly
421	2499708	Inlet hose of air breather
423	2499528	Inlet valve
424	2499520	Overflow microswitch
426	2498409	Overflow float casing
427	2499930	Overflow float
428	2499529	Main PCB
429	2498410	PCB Box
430	2498411	Lid of PCB Box
501	2498408	Inner pipe
510	2499476	Lower sprayer assembly
511	2499477	Lower sprayer support
513	2499478	Flat filter
601	2499479	Ring seal - sump assembly
604	2499480	Coarse filter
605	2499903	Hose clamp (OTK396)
606	2499481	Micro filter
607	2499702	Inlet pipe - heating element
610	2499522	Draining pump
611	2499931	Sump assembly
612	2499703	PVC pipe - pressure switch
613	2499704	Connect hose
614	2499523	Washing pump
618	2499524	Heating element
624	2499705	Inlet pipe - washing pump
625	2499934	Hose clamp (OTK460)
628	2499706	Inner drain pipe
629	2499525	Thermostat
701	2498412	cutlery basket
702	2499932	basket assembly
703	2499933	lower basket assembly
704	2499482	Middle sprayer assembly
705	2498413	Cup rack

Parts List

ID	PART NUMBER	DESCRIPTION
710	2499709	Inlet hose assembly
712	2499530	Wiring harness
-	2406004.905	Hose Clamp (OTK286)
-	2499000.915	Hose Clamp (OTK175)

Wiring Diagram



Error Codes

When a malfunction occurs, the appliance displays error codes to alert you.

Codes (LEDs)	Description	Possible causes
Rapid (E1)	Water malfunction	<ul style="list-style-type: none">• The faucets are not opened• The water intake is restricted• The water pressure is too low
90 mins + Rapid (E3)	The required temperature is not being reached	<ul style="list-style-type: none">• Temperature sensor malfunction• Heating element malfunction
ECO (E4)	An overflow has occurred	<ul style="list-style-type: none">• Leakage in the dishwasher element
90 mins + ECO (E6)	Thermistor Failure	<ul style="list-style-type: none">• Open-circuit failure of thermistor
Rapid + 90 mins + ECO (E7)	Thermistor Failure	<ul style="list-style-type: none">• Short-circuit failure of thermistor

WARNING // If overflow occurs, turn off the main water supply before calling for service. If there is water in the base pan because of an overfill or small leak, the water should be removed before restarting the dishwasher.

Test Program

A Test Program has been designed to facilitate the technician diagnosis of the dishwasher. The normal operation of several components can be tested using this program. Follow the steps below to activate the Test Program.

1. Turn the switch on the power point OFF if it is ON.
2. Open the dishwasher door and turn the power point switch ON.
3. Within 60s from turning the power point ON, with the dishwasher door open and while holding down the Start/Pause Button, press the Power Button until the dishwasher enter the Test Program (All LEDs will be flashing).
4. The appliance should now be on stand by.
5. Close the door to start the Test Program. The two vertical rows of LEDs (Prgrams and Progress LEDs) will be flashing in pairs rolling from the top to bottom during the Test Program Cycle

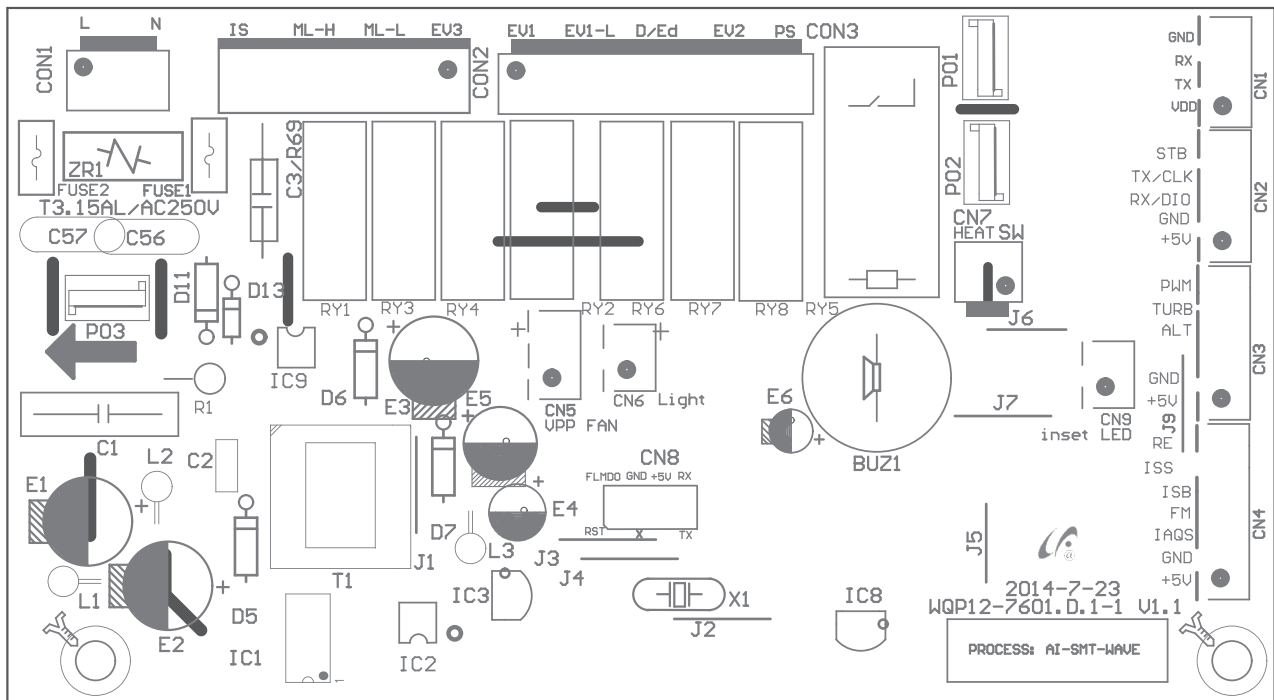
Test Program Steps Table

Step	Testing	Description
0	Initialization	Stand by mode
1	Inlet Valve	Inlet valve is opened to allow the tub to be filled with 3.6L of water. If the model is equipped with turbidity sensor, the turbidity level is displayed.
2	High-speed Washing Pump & Heating Element	The washing pump runs for 10 seconds followed by the heating element operating until the water reaches 57°C. Once this temperature is reached, the program will pause. <i>Press the Start/Pause to continue to the next step.</i>
3	Low-speed Washing Pump & Dispenser	The washing pump runs in low speed for 8s, then dispenser will be activated for 45s.
4	Regeneration Valve	The regeneration valve is open for 30s.
5	Drain Pump	The drain pump runs for 30s.
6	Finish	Unit will be in stand by mode.

NOTE // Steps of the Test Program can be skipped by pressing the Start/Pause button.

NOTE // An Error Codes Table can be found on page 12 of this manual.

PCB



Model: 7601

ID	Label	Function
1	ML-H	High-speed washing pump
2	PS	Darin pump
3	EV1	Inlet valve
4	P01/P02	Heating element
5	EV2	Regeneration valve of softener
6	EV3	Diverter valve
7	ML-L	Low-speed washing pump
8	D/Ed	Dispenser
9	FAN	Fan
10	BUZ1	Buzzer
11	LIGHT	Top light
12	RE	Thermister
13	IS	Door
14	IA QS	Overflow sensor
15	IS S	Sallt sensor
16	IS B	Rinse sensor
17	FM	Flowmeter
18	TURB	Turbidity sensor

NOTE// The position of the connectors can vary slightly depending on the dishwasher model or generation. However, the labels used for the connectors are kept the same.

Electrical Components - Testing

Component	Unplug connectors [PCB]		Multimeter probes between	Expected Reading
Inlet Valve	CON1 & CON3	WITH THE DISHWASHER DOOR CLOSED	Blue wire CON3 (EV1) & Blue wire CON1 (ACN)	4.4 - 4.8 kΩ
Drain Pump	CON1 & CON3		Red wire CON3 (PS) & Blue wire CON1 (ACN)	220 - 250 Ω
Heating Element	-		Refer to Image A	27 - 30 Ω
Washing Pump	CON1 & CON2		Black wire CON2 (ML-H) & Blue wire CON1 (ACN)	100 - 130 Ω
Washing Pump	CON1 & CON2		Black wire CON2 (ML-H) & Yellow wire CON2 (ML-L)	35 - 45 Ω
NTC Thermistor	CN4		Blue wire CN4 (RE) & Purple wire CN4 (GND)	Refer to Table 1
Flowmeter	CN4		Black wire CN4 (FM) & Purple wire CN4 (GND)	Continuity Test while water is going through the flowmeter

IMAGE A // Heating element test - Multimeter probes position.

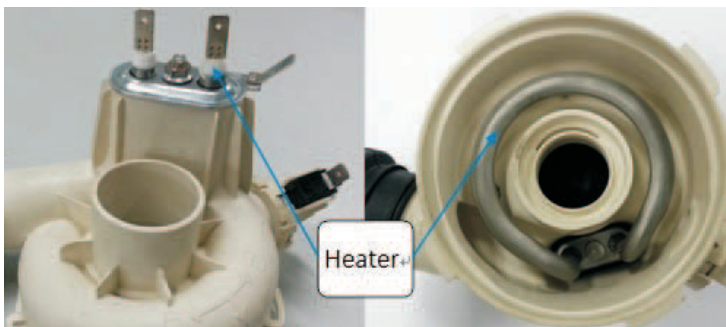
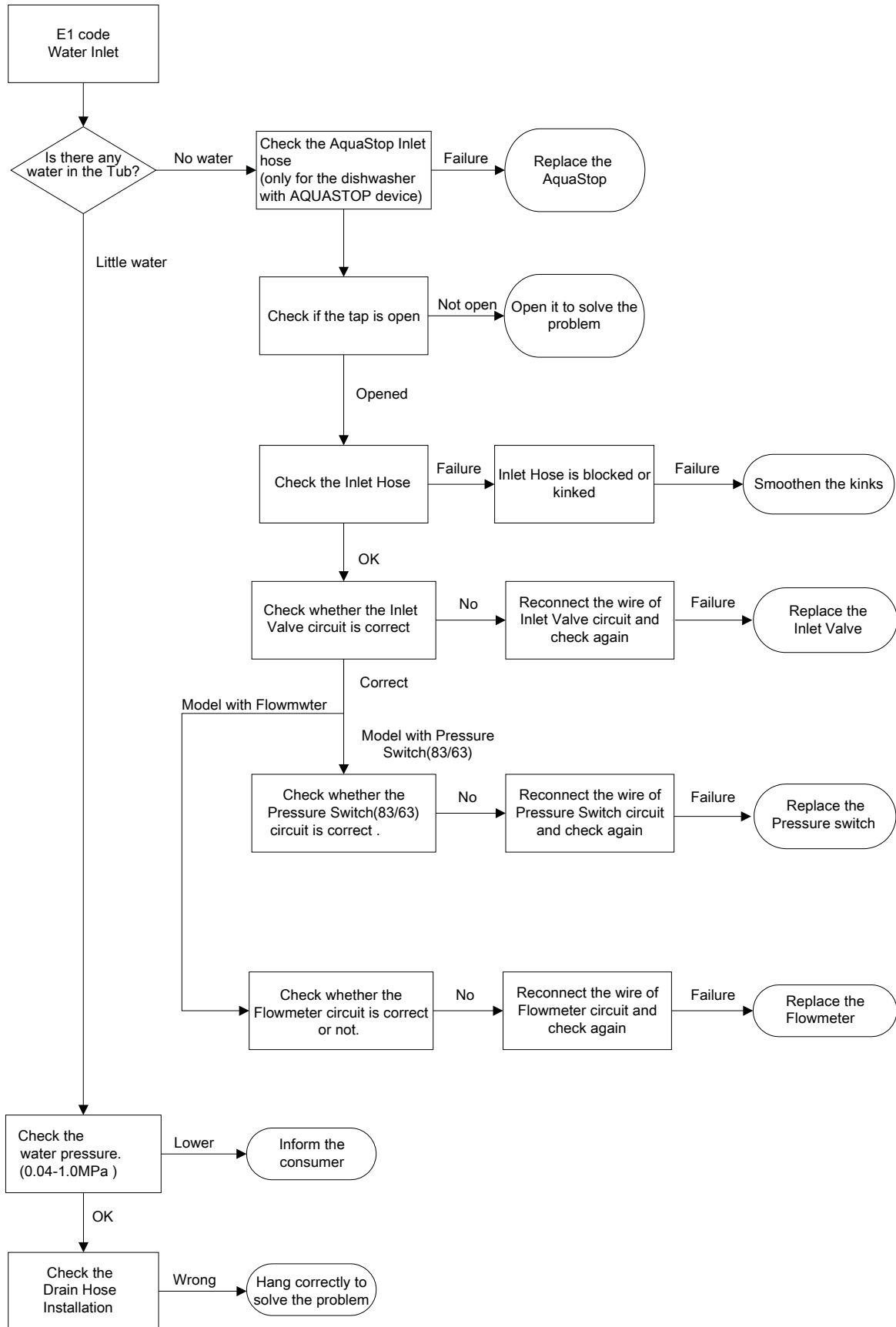


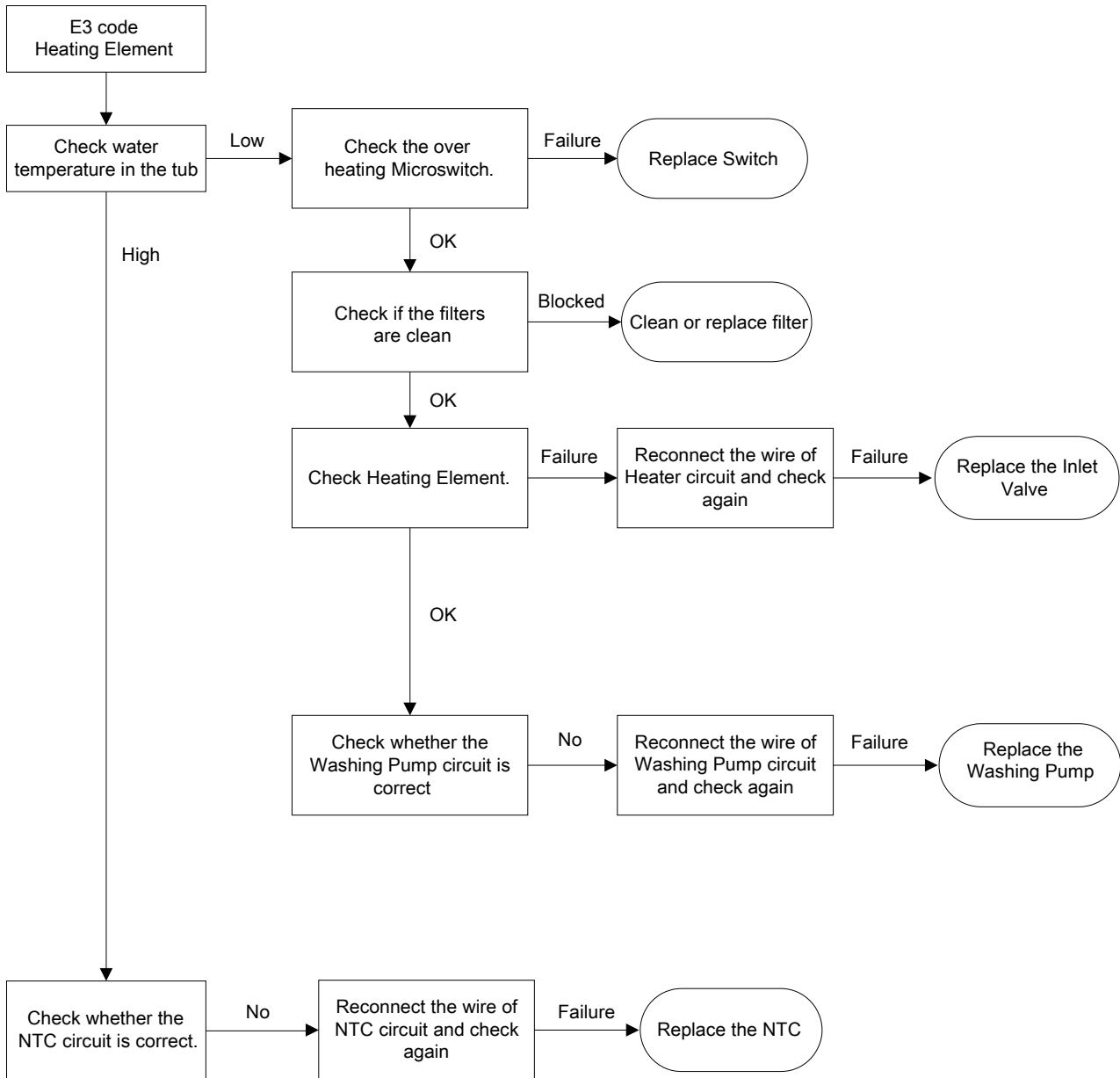
TABLE 1 // NTC Thermistor readings.

Temperature	Expected Reading
15°C	17.48 kΩ
20°C	12.12 kΩ
25°C	10.00 kΩ
30°C	8.299 kΩ
40°C	5.807 kΩ
50°C	4.144 kΩ
60°C	3.011 kΩ
70°C	2.224 kΩ
80°C	1.667 kΩ
85°C	1.451 kΩ

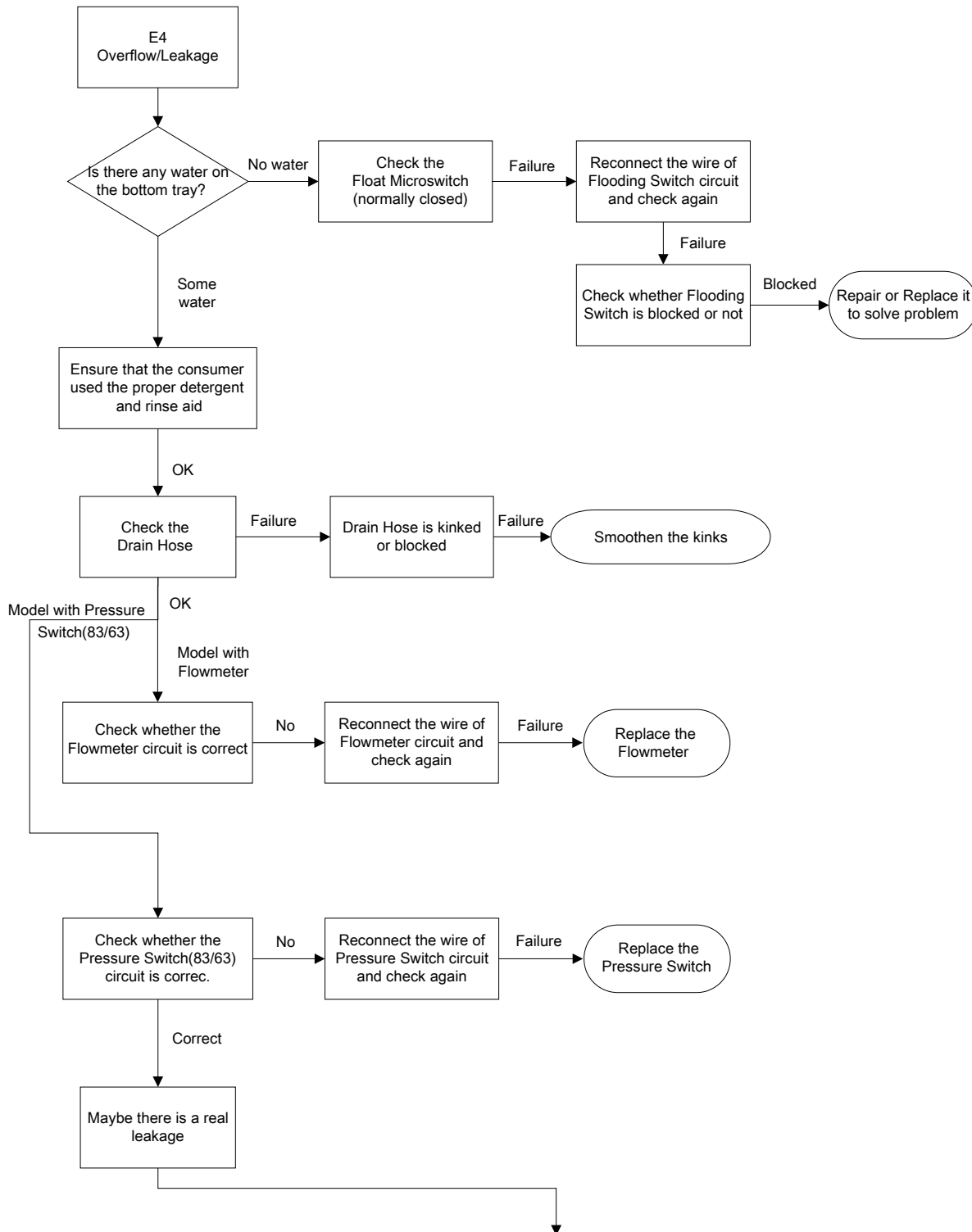
Water Inlet Malfunction



Heating Element Malfunction



Overflow/leakage Malfunction



Do as follows:

Remove both side panels

Drain the water from the bottom tray

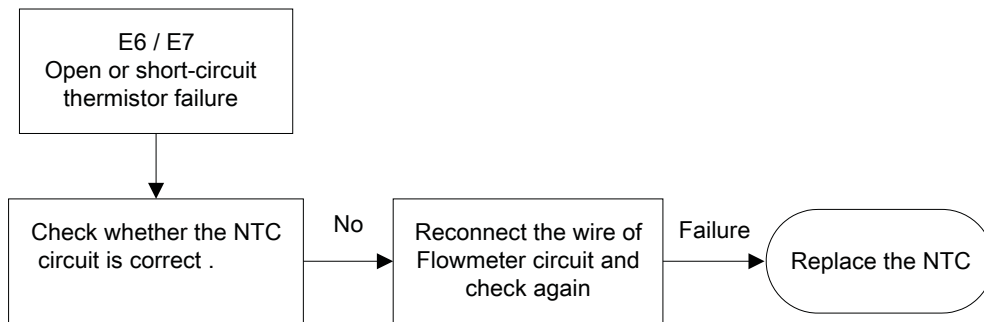
Restart the dishwasher and select a strong or standard wash program as leakages are more likely to occur at higher temperatures and after a long period of running time.

Observe the bottom tray every twenty minutes.

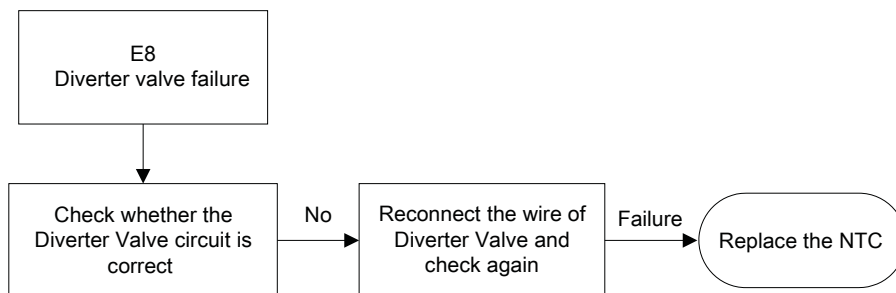
If any water appears, you will find out which areas, such as motor, drain pump, sump, softener, and hoses between them, and also clips at the end of each hose, besides the weld seam at the bottom of the tub.

If hours passed, but no water comes out, you should stop the dishwasher with sufficient water in the inner tub, and observe it again after leaving it alone for one to two hours.

Water Inlet Malfunction



Diverter Valve Malfunction (Not all models)



NOTE // If the problem has not been solved by follow these flowcharts. Try replacing the PCB.



CONTACT DETAILS

AUSTRALIA
ARISIT PTY LIMITED

40-44 Mark Anthony Drive,
Dandenong South, VIC 3175,
Australia

P // 1300 762 219
F // 03 9768 0838
consumer.care@arisit.com

NEW ZEALAND
ARISIT PTY LIMITED

PO Box 68-140
Newton, Auckland 1145,
New Zealand

P // 09 306 1020
F // 09 302 0077
sales@aristonappliances.co.nz

Tisira is committed to ongoing research and development. Every effort has been made to ensure all information in this service manual is correct at time of going to print. Dimensions should be used as a reference only and actual dimensions should be taken from the physical product only.

Manufacturer reserves the right to change specifications without notice.

 **tisira**



www.tisira.com