



# SERVICE MANUAL

## 900 // CERAMIC HOB - TOUCH

### TCT90, TCT91

DISCLAIMER // THE INFORMATION CONTAINED IN THIS SERVICE MANUAL IS INTENDED FOR LICENSED PERSONNEL ONLY. PLEASE CONTACT ARISIT FOR FUTHER INFORMATION [AUST] 1300 762 219 [NEW ZEALAND] 09 306 1020

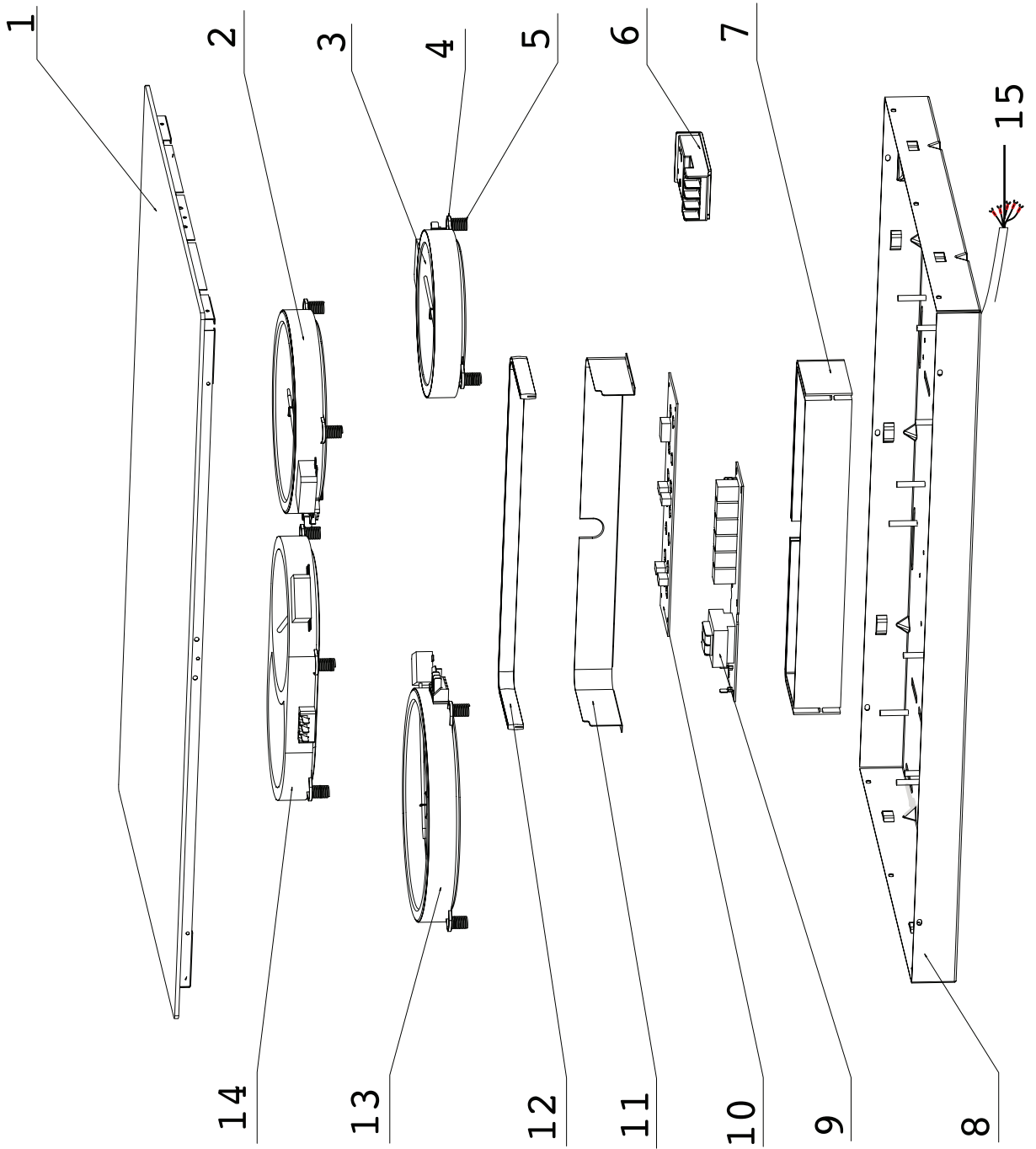


Version 4.0



[www.tisira.com](http://www.tisira.com)

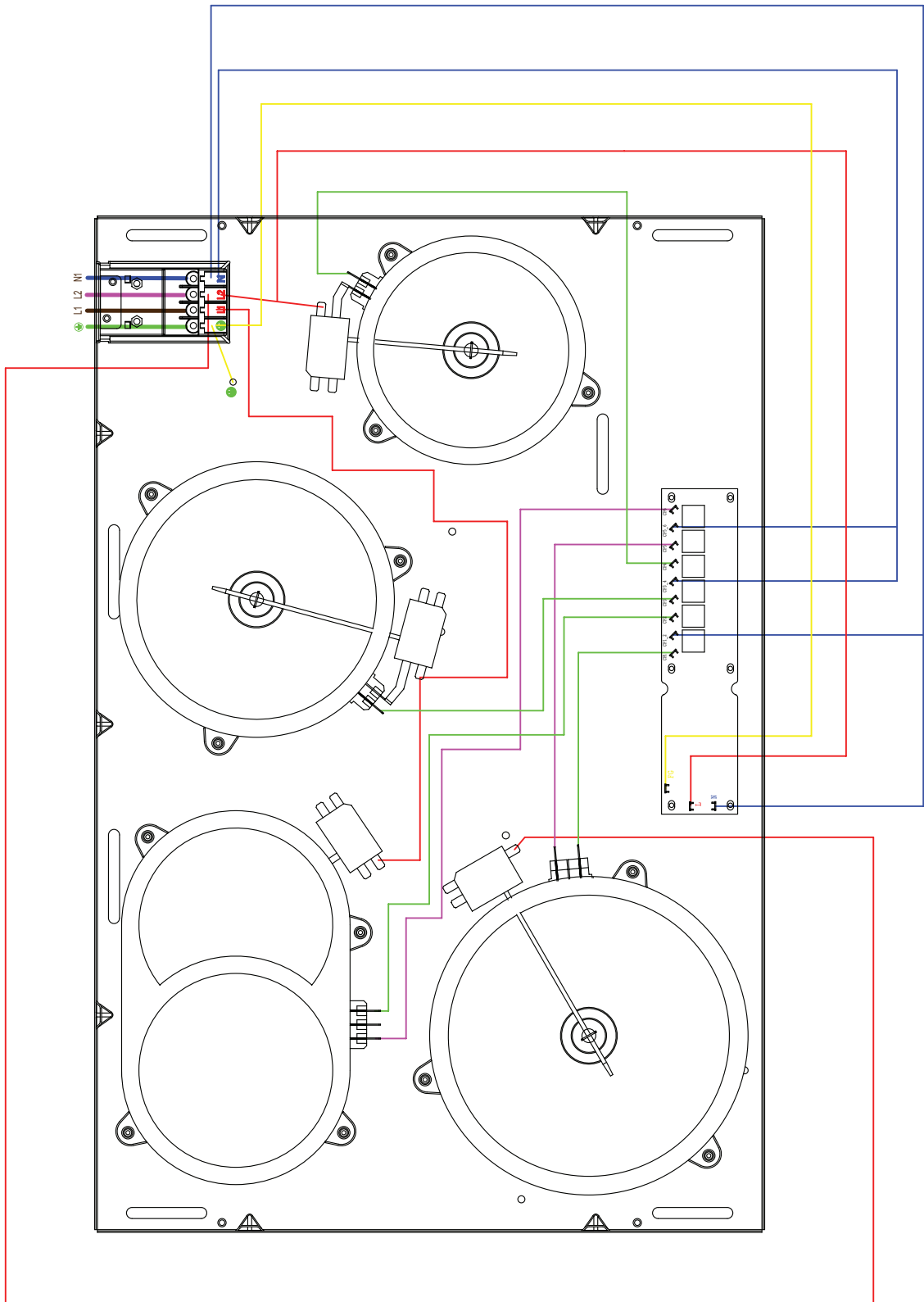
# Exploded View



## Parts List

ID	PART NUMBER	DESCRIPTION
1	G-TCT90	Glass Assembly
2	541600000002	Hot Plate - 1800W (Ribbon)
3	541600000003	Hot Plate - 1200W (Ribbon)
4	303207800289	Spring Gasket Plate
5	303207805055	Spring Gasket Bracket
6	303207300159	Junction Box
7	303207300274	Inverter Base
8	303207800291	Base
9	303203101333	Touch Control PCB Assembly - Suitable for TCT90
	17166100001017	Touch Control PCB Assembly - Suitable for TCT91
10	303203101334	Display Board Assembly - Suitable for TCT90
	17166100001119	Display Board Assembly - Suitable for TCT91
11	303207800290	Heat Insulation Plate
12	303207103152	Silicone Seal Strip
13	303203501038	Hot Plate - Left Front
14	541600000004	Hot Plate - Left Rear
15	541800000019	Power Cord

# Wiring Diagram





## CONTACT DETAILS

AUSTRALIA  
ARISIT PTY LIMITED

40-44 Mark Anthony Drive,  
Dandenong South, VIC 3175,  
Australia

P // 1300 762 219  
F // 03 9768 0838  
consumer.care@arisit.com

NEW ZEALAND  
ARISIT PTY LIMITED

PO Box 68-140  
Newton, Auckland 1145,  
New Zealand

P // 09 306 1020  
F // 09 302 0077  
sales@aristonappliances.co.nz

Tisira is committed to ongoing research and development. Every effort has been made to ensure all information in this service manual is correct at time of going to print. Dimensions should be used as a reference only and actual dimensions should be taken from the physical product only.

Manufacturer reserves the right to change specifications without notice.

 **tisira**



[www.tisira.com](http://www.tisira.com)