



ELECTROLUX HOME PRODUCTS PTY LTD
ABN 51 004 762 341

Technical Publication N° RH063

Issue: 4
Date: 08/16

WEB SITE ADDRESS: www.partnship.com.au

UNIVERSAL COOKER HOODS

MODELS:

RFD602S

RFD602W

RFD902S

RFD902W

First Built Dates:		
RFD602S	-	May '05
RFD602W	-	May '05
RFD902S	-	May '05
RFD902W	-	May '05

CONTENTS	PAGE Nº
VARIANT CHANGE SUMMARY / FIRST BUILD DATES	2
CONTENTS & ABBREVIATION DETAILS	3
UNIVERSAL COOKER HOOD 600 SLIDE SWITCH SINGLE MOTOR	4 & 5
UNIVERSAL COOKER HOOD 900 SLIDE SWITCH SINGLE MOTOR	6 & 7
CIRCUIT DIAGRAM	8
INSTALLATION INSTRUCTIONS	9 - 11

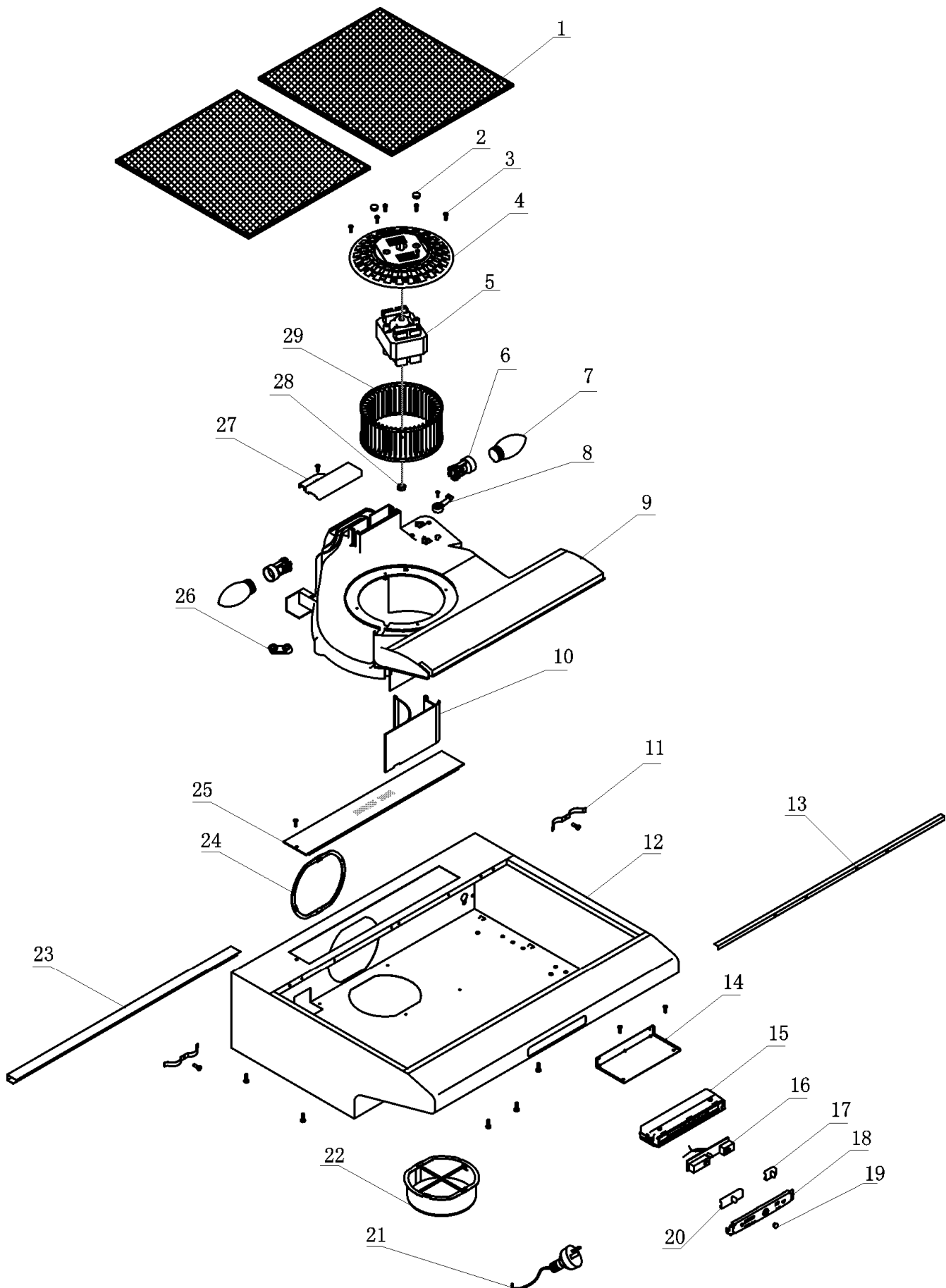
NOTE: In Parts Listings

N.I. = Not Illustrated
N.P.A. = No Part Available
N.P.N. = Not Used on this Model

MODELS: RFD602S

RFD602W

EX. VIEW DRAWING 5271
UNIVERSAL COOKER HOOD
SLIDE SWITCH - SINGLE
MOTOR

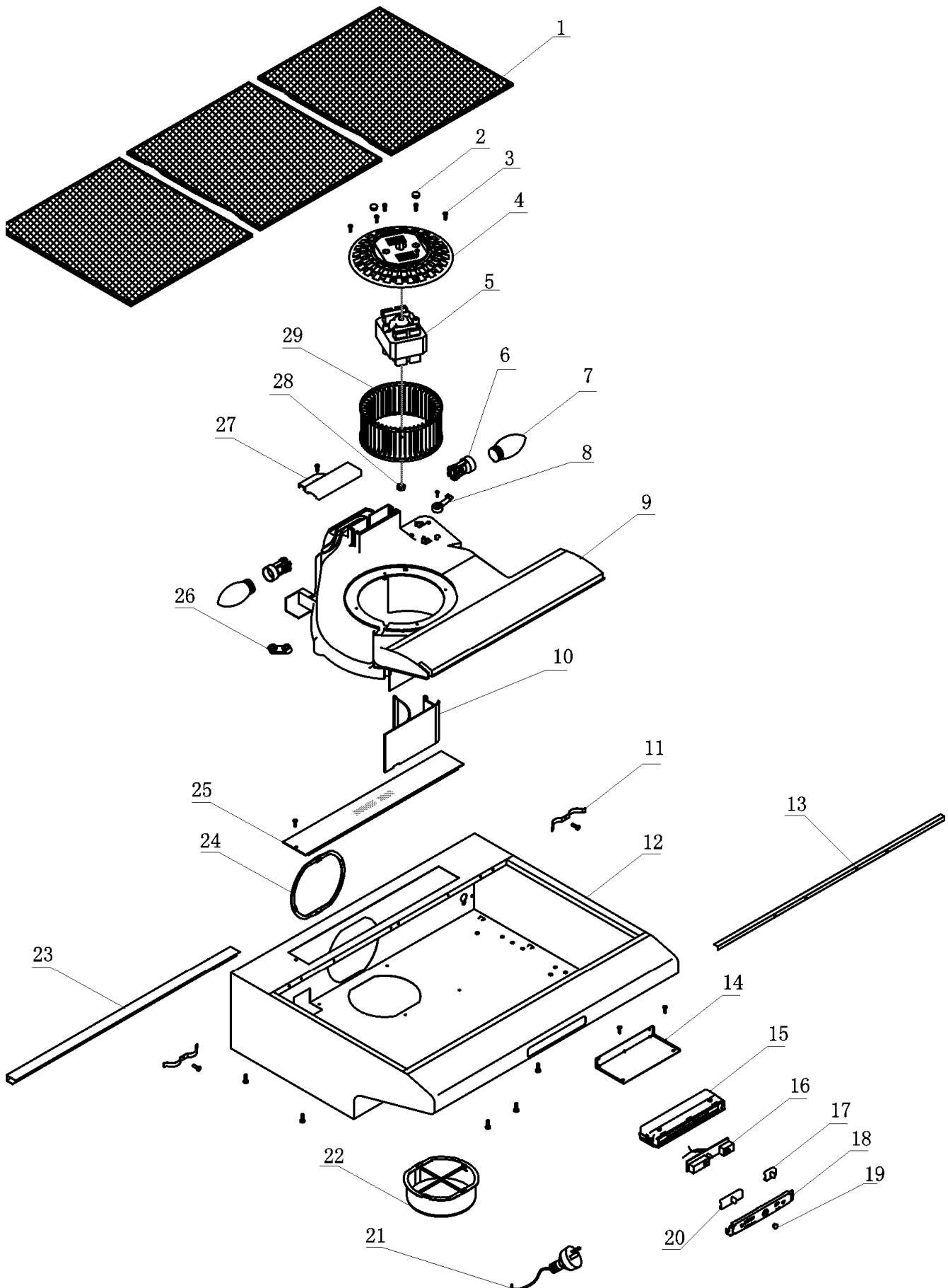


ITEM	PART N°	DESCRIPTION	Ex. 5271	S	W
1	ACC187	Filter 276 x 315 x 10mm (Pack 2)		2	2
2	E600A0211	Screw Cap (Included with Item 5)		2	2
3	N.P.A.	Screw		-	-
4	Refer Item 5	Motor Bracket (Included with Item 5)		1	1
5	E610060	Motor L/H Turbo Fan Nut & Brkt Assy 600mm Motor Wires (Includes Item 2, 4, 28 & 29)		1	1
6	E610006X2WD	Lamp Holder		2	2
7	0060002083K	Kit Lamp 40W Candle 240V		2	2
8	E600A0203	Select Lever		1	1
9	N.P.A.	Chamber		1	1
10	E610010	Fan Flap		1	1
11	0120 009 312	Spring Filter Clip		2	2
12	N.P.A.	Metal Casing		1	1
13	N.P.A.	Front Filter Channel		1	1
14	N.P.A.	Switch Box Support		1	1
15	E610015-19B	Switch Box Assy – Black (Includes Items 16, 17, 18, 19 & 20)		1	-
	E610015-19W	Switch Box Assy – White (Includes Items 16, 17, 18, 19 & 20)		-	1
16	E610016	PCB Unit (Included with Item 15)		1	1
17	Refer Item 15	Small Switch Knob (Included with Item 15)		1	1
18	Refer Item 15	Switch Panel (Included with Item 15)		1	1
19	Refer Item 15	Pilot Lens (Included with Item 15)		1	1
20	Refer Item 15	Big Switch Knob (Included with Item 15)		1	1
21	0215002088	Cord Service 7.5A 1500mm		1	1
22	AR125RFA	Kit-125mm Round Flue Adaptor		1	1
23	N.P.A.	Rear Filter Channel		1	1
24	E610024	Outlet Cover		1	1
25	E610025	Lens Diffuser 40W		1	1
26	N.P.A.	Cord Press Piece		1	1
27	N.P.A.	Lamp Cover		1	1
28	Refer Item 5	Nut (Included with Item 5)		1	1
29	Refer Item 5	Turbo Fan (Included with Item 5)		1	1
N.I.	ARCFD	Filter Kit Charcoal (1per)		x	x

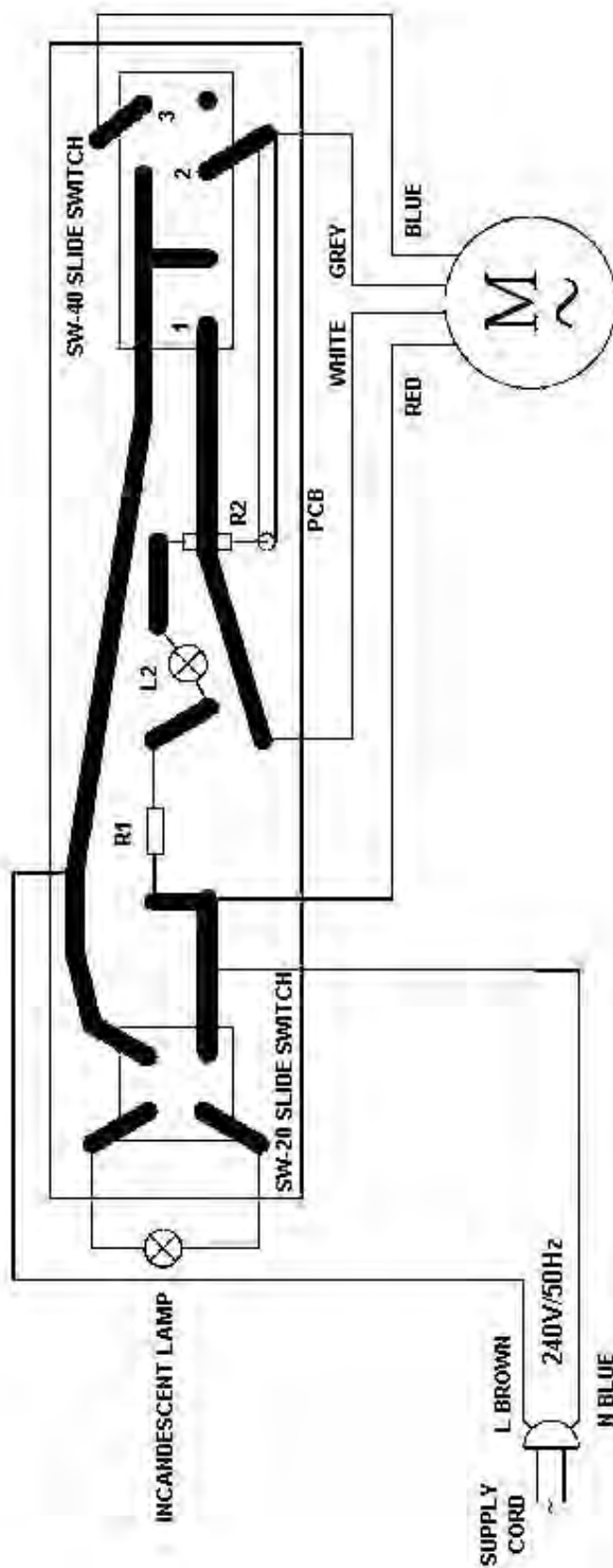
MODELS: RFD902S

RFD902W

EX. VIEW DRAWING 5272
UNIVERSAL COOKER HOOD
SLIDE SWITCH - SINGLE
MOTOR



ITEM	PART N°	DESCRIPTION	Ex. 5272	S	W
1	E910004	Filter 285 x 315 x 10mm		3	3
2	E600A0211	Screw Cap (Included with Item 5)		2	2
3	N.P.A.	Screw		-	-
4	Refer Item 5	Motor Bracket (Included with Item 5)		1	1
5	E610060	Motor L/H Turbo Fan Nut & Brkt Assy 600mm Motor Wires (Includes Item 2, 4, 28 & 29)		1	1
6	0212002083	Lamp Holder		2	2
7	0060002083K	Kit Lamp 40W Candle 240V		2	2
8	E600A0203	Select Lever		1	1
9	N.P.A.	Chamber		1	1
10	E610010	Fan Flap		1	1
11	0120 009 312	Spring Filter Clip		2	2
12	N.P.A.	Metal Casing		1	1
13	N.P.A.	Front Filter Channel		1	1
14	N.P.A.	Switch Box Support		1	1
15	E610015-19B	Switch Box Assy – Black (Includes Items 16, 17, 18, 19 & 20)		1	-
	E610015-19W	Switch Box Assy – White (Includes Items 16, 17, 18, 19 & 20)		-	1
16	E610016	PCB Unit (Included with Item 15)		1	1
17	Refer Item 15	Small Switch Knob (Included with Item 15)		1	1
18	Refer Item 15	Switch Panel (Included with Item 15)		1	1
19	Refer Item 15	Pilot Lens (Included with Item 15)		1	1
20	Refer Item 15	Big Switch Knob (Included with Item 15)		1	1
21	0215002088	Cord Service 7.5A 1500mm		1	1
22	AR125RFA	Kit-125mm Round Flue Adaptor		1	1
23	N.P.A.	Rear Filter Channel		1	1
24	E610024	Outlet Cover		1	1
25	E610025	Lens Diffuser 40W		1	1
26	N.P.A.	Cord Press Piece		1	1
27	N.P.A.	Lamp Cover		1	1
28	Refer Item 5	Nut (Included with Item 5)		1	1
29	Refer Item 5	Turbo Fan (Included with Item 5)		1	1
N.I.	ARCFD	Filter Kit Charcoal (1per)		x	x

**IMPORTANT SAFETY NOTICE**

This diagram has been prepared for use by electrically qualified service technicians. Electrolux cannot be held responsible for the interpretation of its service publications nor for any injury or damage that may occur in connection with their use.

Universal Cooker Hood Installation and Operation Manual

These cooker hoods are domestic appliances which have been manufactured and tested to comply with Australian and New Zealand Standard AS/NZS 3350.2.31.

Safety Warnings

- ▶ Young children should be supervised to ensure they do not play with the cooker hood.
- ▶ The cooker hood is not intended for use by young children or infirm persons without supervision.
- ▶ Ensure the cooker hood is switched off before carrying out maintenance, to avoid any possibility of electric shock.
- ▶ Grease filters must be removed every four weeks (maximum) for cleaning to reduce the risk of fire.
- ▶ Do not **flamb'e** under the cooker hood.
- ▶ This cooker hood is not recommended for **barbeques**.
- ▶ The exhaust air from the cooker hood must not be discharged into any heating flue, which may carry combustion products from other sources.
- ▶ Exhaust air must not be discharged into a wall cavity, unless the cavity is designed for the purpose.
- ▶ There must be adequate ventilation of the room when the cooker hood is used at the same time as appliances burning gas or other fuels.
- ▶ Always cover lit gas burners with pots or pans when the cooker hood is in use.
- ▶ Always switch off gas burners before you remove pots or pans.

Cleaning

Wipe the cooker hood body and flue with a sponge or soft cloth soaked in warm soapy water. **Do not** use oven cleaners or other abrasive materials.

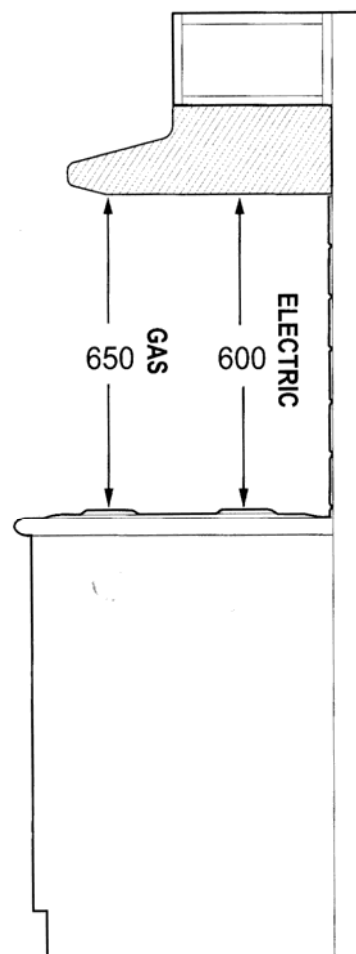
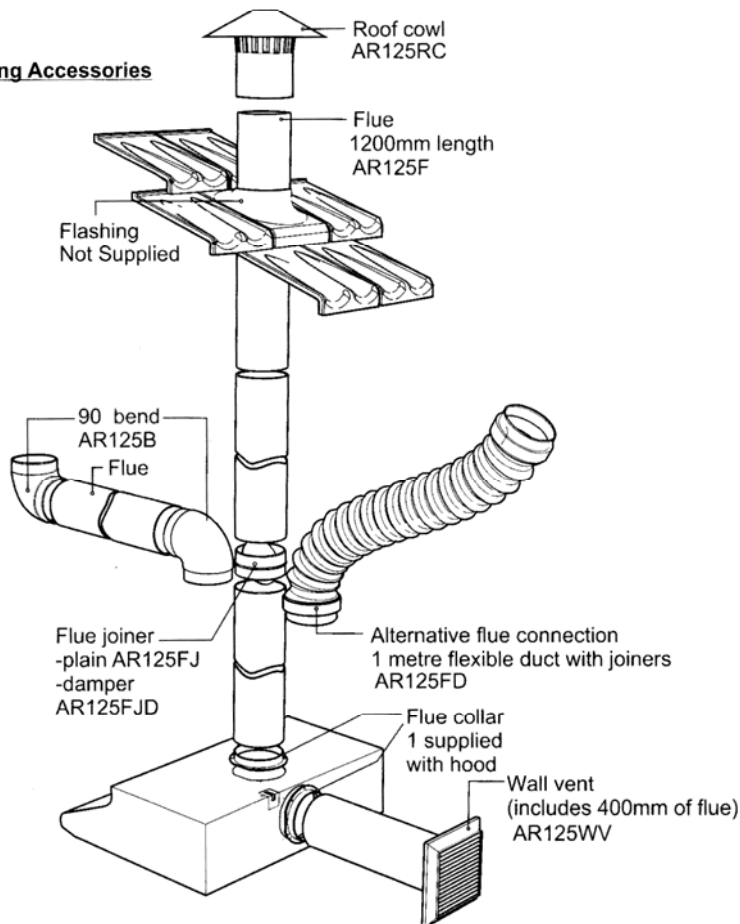
Electrical Connection

- ▶ Check that the mains voltage matches with the voltage on the data plate inside the cooker hood.
- ▶ Check that the installation complies with standards of local gas and electricity authorities.
- ▶ If the supply cord is damaged, it must be replaced by the manufacturer or its service agent or a similarly qualified person in order to avoid a hazard.

Accessories

- ▶ Use 125mm round exhaust ducting for best performance.
- ▶ When using flexible duct always install duct with the wire helix pulled taut to minimise pressure loss.
- ▶ Try to keep exhaust duct short and straight.
- ▶ Keep bends in the exhaust duct to a minimum.
- ▶ Do not reduce the size or restrict exhaust duct.

Ducting Accessories



**MODELS: RFD602S
RFD902S**

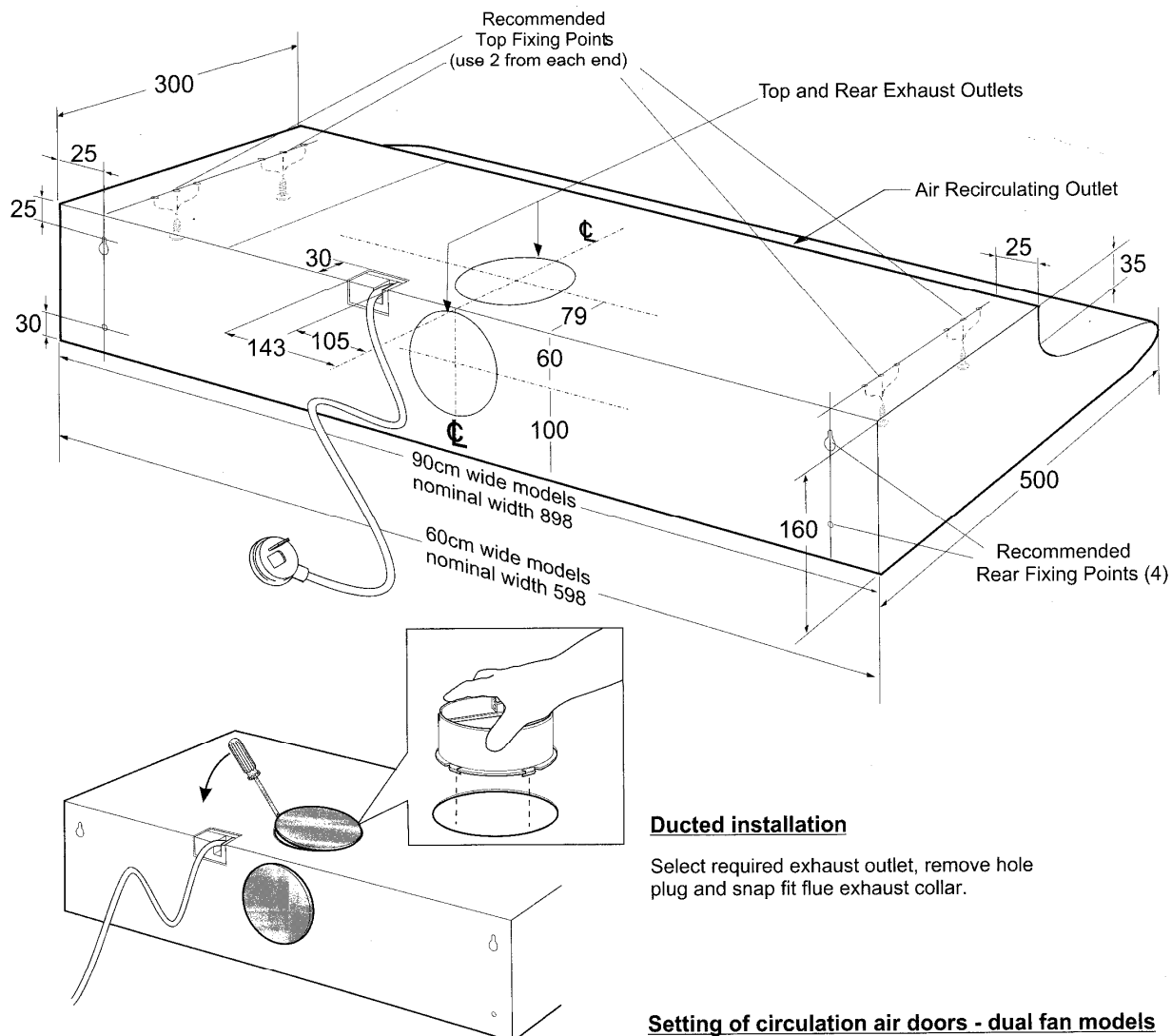
**RFD602W
RFD902W**

EX. VIEW DRAWING 5282 UNIVERSAL COOKER HOOD INSTALLATION INSTRUCTIONS

Stainless Steel Models

Before installing the cooker hood, remove all protective plastic covering from stainless steel surfaces.

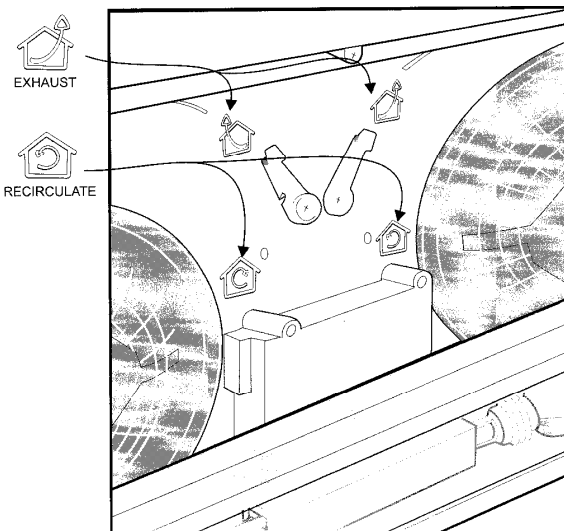
Use at least 4 screws (not provided) and the mounting holes provided to securely mount the cooker hood.
Make sure that the cooker hood is level and free from twist.



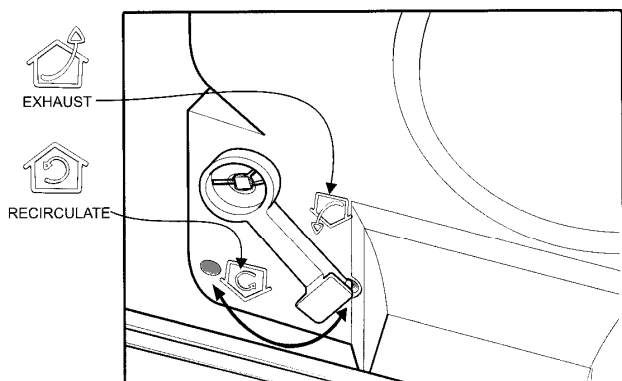
Ducted installation

Select required exhaust outlet, remove hole plug and snap fit flue exhaust collar.

Setting of circulation air doors - dual fan models



Setting of circulation air doors - single fan models



IMPORTANT: SET CIRCULATING MODES BEFORE INSTALLING THE HOLE PLUGS.

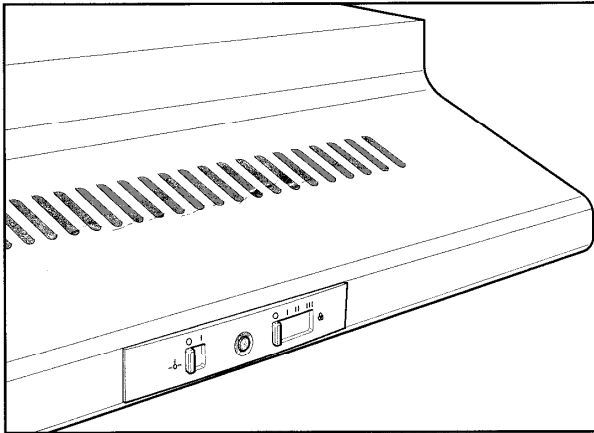
**MODELS: RFD602S
RFD902S**

**RFD602W
RFD902W**

**EX. VIEW DRAWING 5283
UNIVERSAL COOKER HOOD
INSTALLATION INSTRUCTIONS**

Cooker Hood Operation

Best results are obtained by using a low speed for normal conditions and a high speed when odours are more concentrated. Turn the hood on a few minutes before you start cooking. It should be left on after cooking for about 15 minutes or until all odours have disappeared.



Slide switch controls

Light switch: This switch is used to turn the light fitted in the hood on and off.

Extractor fan switch: Used to select fan speeds

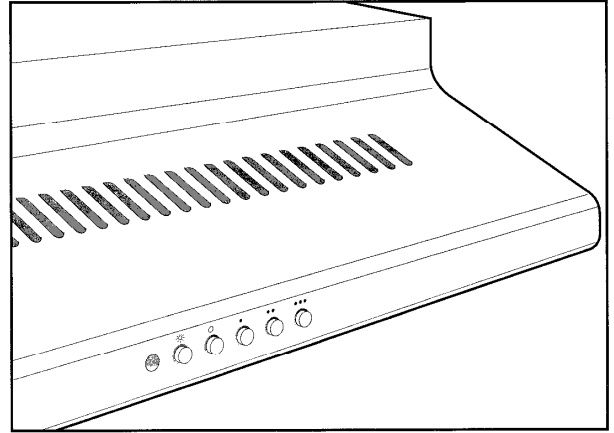
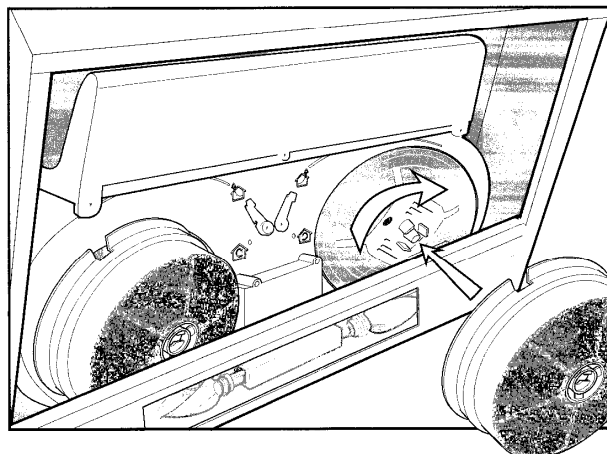
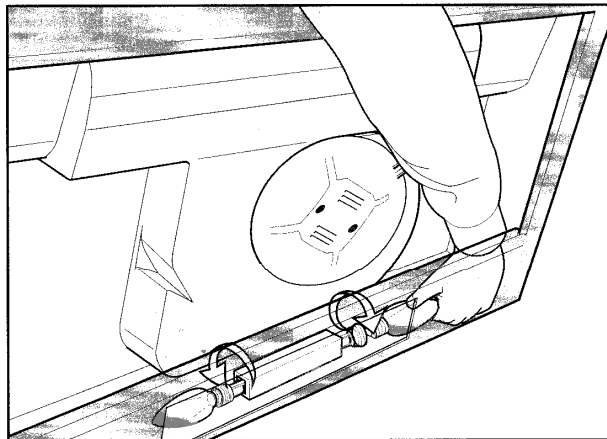
Slide position I: Fan speed Lo.

Slide position II: Fan speed Med.

Slide position III: Fan speed High.

Replacing lamps:

Ensure the appliance is switched off before carrying out maintenance, to avoid any possibility of electric shock. Remove grease filter to replace lamp. Replace with 40W (maximum) E14 candle lamp.



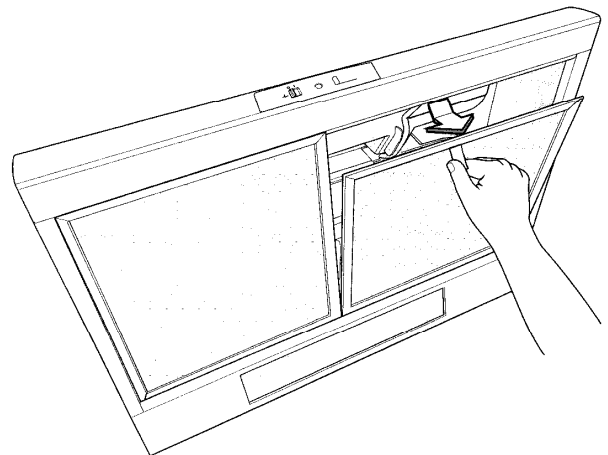
Press button switch controls

Light switch: Depress light button to turn light **ON**. Press light button to turn light **OFF**.

Extractor fan switch interlocked switching: Select a fan speed, depress button to turn fan **On**. Press button (**O**) to turn fan **OFF**.

Maintenance:

Clean grease filters every three to four weeks maximum. Greasy filters are a fire risk. Remove the grease filters, soak and agitate in hot soapy water. Rinse, drain and shake well before replacing filters. **Do not** use oven cleaners or other caustic materials.



Recirculating accessory:

Optional carbon filter ARCFD for recirculating mode only.