



**Electrolux**

**ELECTROLUX HOME PRODUCTS PTY LTD**

ABN 51 004 762 341

Technical Publication N° KSS103

Issue: 4

Date: 05/13

***KELVINATOR***

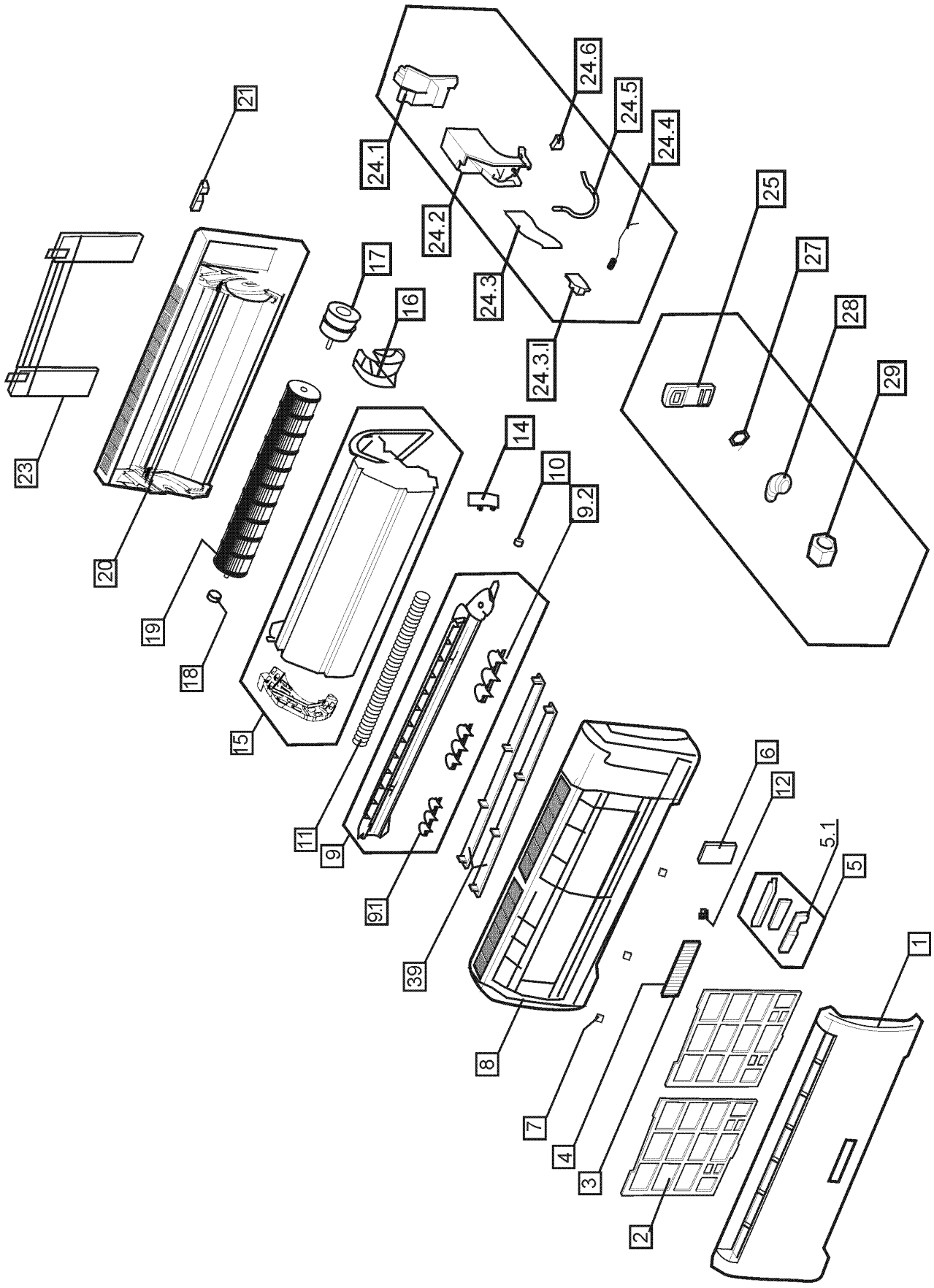
***SPLIT SYSTEM  
AIR CONDITIONER***

<b>SECTION</b>	<b>PAGE N°</b>
INDOOR ASSEMBLY	2 & 3
OUTDOOR ASSEMBLY	4 & 5

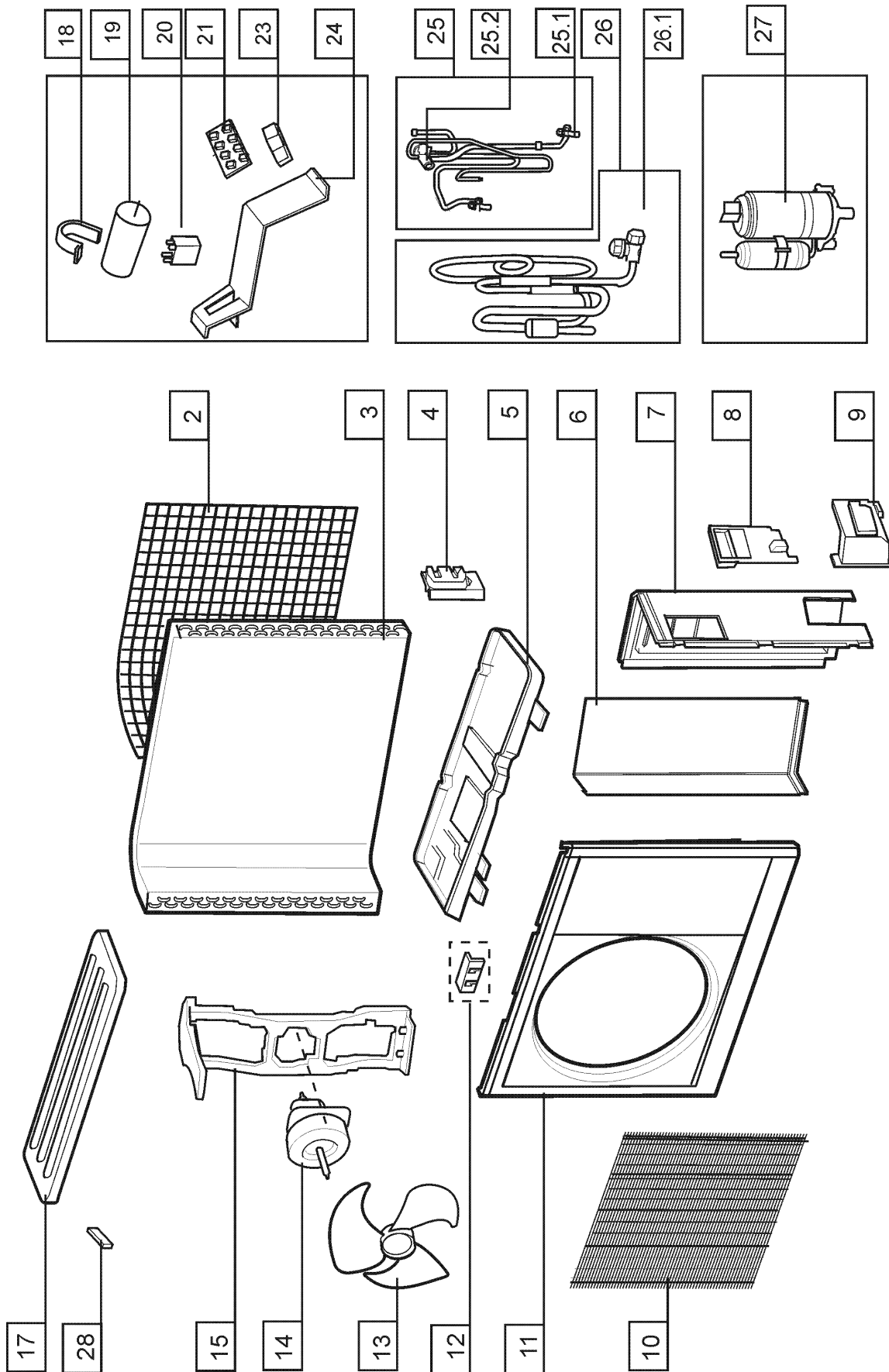
**Note:** Any referral to (Late Production) indicates an alternative option that can be used if the original spare part is not compatible.

***MODEL:***

**KSE35HRB**



ITEM	PART NUMBER	DESCRIPTION Ex. 7538	QTY
1	<b>201132890123</b>	Panel Assembly, Front	1
	<b>2011328A0790</b>	Panel Assembly, Front ( <b>Late Production</b> )	1
2	<b>201132790198</b>	Filter, Air	2
3	<b>10109121226</b>	Filter, Air (Secondary)	1
4	<b>10109121225</b>	Holder, Secondary Air Filter	1
5	<b>203332890103</b>	PCB, Display Box Assembly	1
5.1	<b>201332890077</b>	PCB, Display Board	1
6	<b>201132890129</b>	Cover, Wiring	1
7	<b>201132790199</b>	Cap, Screw	3
8	<b>201132890550</b>	Panel Frame Assembly	1
9	<b>201132890131</b>	Frame Assembly, Air Out	1
9.1	<b>201132790341</b>	Louver, Vertical	9
9.2	<b>201132790342</b>	Holder, Louver	3
10	<b>202400200055</b>	Motor, Louver	1
11	<b>31607111010</b>	Hose, Drain	1
12	<b>10112121224</b>	Cover, Temperature Sensor	1
14	<b>201130310350</b>	Cover, Water	1
15	<b>2015327A0041</b>	Evaporator	1
16	<b>201132790188</b>	Cover, Fan Motor	1
17	<b>202400300418</b>	Motor, Fan	1
	<b>20240030W418</b>	Motor, Fan ( <b>Late Production</b> )	1
18	<b>10309121220</b>	Holder, Bearing	1
19	<b>201100200111</b>	Blade, Fan-Cross Flow	1
20	<b>201132790193</b>	Chassis	1
21	<b>201232800001</b>	Clamp, Connecting Pipe	1
23	<b>201232790008</b>	Plate, Installation	1
24.1	<b>11607111052</b>	Cover, E-Parts Box	1
24.2	<b>11607111053</b>	Box, E-Parts	1
24.3	<b>201332890210</b>	PCB, Main Control Board	1
24.3.1	<b>202401200001</b>	Capacitor	1
24.4	<b>202301300092</b>	Sensor, Indoor Temp	1
24.5	<b>13007111067</b>	Sensor, Evaporator Temp	1
24.6	<b>11607111037</b>	Block, Terminal	1
25	<b>203355091127</b>	Remote Controller	1
27	<b>31009321021</b>	Seal, Drainage Connector	1
28	<b>11609121003</b>	Connector, Drainage	1
29	<b>10909121012</b>	Nut, Flare (1/4 – 6.35mm)	1
	<b>10912121019</b>	Nut, Flare (1/2 – 12.7mm)	1
39	<b>201132890128</b>	Louver, Horizontal (Lower)	1
	<b>201132890130</b>	Louver, Horizontal (Upper)	1



ITEM	PART NUMBER	DESCRIPTION Ex. 7539	QTY
2	<b>201235290067</b>	Net, Rear	1
3	<b>201537490054</b>	Coil Assembly, Condenser	1
4	<b>10118113805</b>	Plate, Valve	1
5	<b>201237590030</b>	Base Pan Assembly	1
6	<b>2012374G0008</b>	Plate, Partition	1
7	<b>20123769G001</b>	Panel, Right Hand	1
8	<b>10112121808</b>	Handle, Big	1
9	<b>10118121832</b>	Collector, Water	1
10	<b>201235290030</b>	Grill, Front	1
11	<b>201237400190</b>	Panel, Front	1
12	<b>10112121801</b>	Clamp, Front Grill	6
13	<b>10112121803</b>	Blade, Fan-Axial Flow	1
14	<b>202400400723</b>	Motor, Fan	1
	<b>20240040W723</b>	Motor, Fan ( <b>Late Production</b> )	1
15	<b>201237400051</b>	Bracket Assembly, Motor Mounting	1
17	<b>2012374G0025</b>	Cover, Top	1
18	<b>201200100005</b>	Clamp, Capacitor	1
19	<b>202401000416</b>	Capacitor, Compressor	1
20	<b>202401190019</b>	Capacitor, Fan Motor	1
21	<b>202301450114</b>	Block, Terminal	1
23	<b>10112121817</b>	Clamping Plate, Terminal Block	1
24	<b>201235000034</b>	Support, E-Parts	1
25	<b>201637590801</b>	Valve Assembly, 4-Way	1
	<b>2016375A0038</b>	Valve Assembly, 4-Way ( <b>Late Production</b> )	1
25.1	<b>13612111804</b>	Valve, Gas	1
25.2	<b>12812121801</b>	Valve, 4-Way	1
	<b>20160069D011</b>	Valve, 4-Way ( <b>Late Production</b> )	1
26	<b>201637490460</b>	Valve Assembly, Liquid	1
26.1	<b>50118121802</b>	Valve, Liquid	1
27	<b>201400700210</b>	Compressor	1
28	<b>201135000006</b>	Handle, Small	1