



**ELECTROLUX HOME PRODUCTS PTY LTD**  
ABN 51 004 762 341

Technical Publication N° DW217

Issue: 3  
Date: 05/10

**WEB SITE ADDRESS: [www.partnship.com.au](http://www.partnship.com.au)**

***WESTINGHOUSE***  
***HOUSEHOLD DISHWASHER***

***MODELS:***

**WDU903SA**  
**PNC 911946268 00**

| <b>VARIANT CHANGE SUMMARY</b> |              |
|-------------------------------|--------------|
| <b>00</b>                     | INTRODUCTION |
|                               |              |

| <b>Release Dates:</b> |            |
|-----------------------|------------|
| WDU903SA              | 01/04/2009 |
|                       |            |

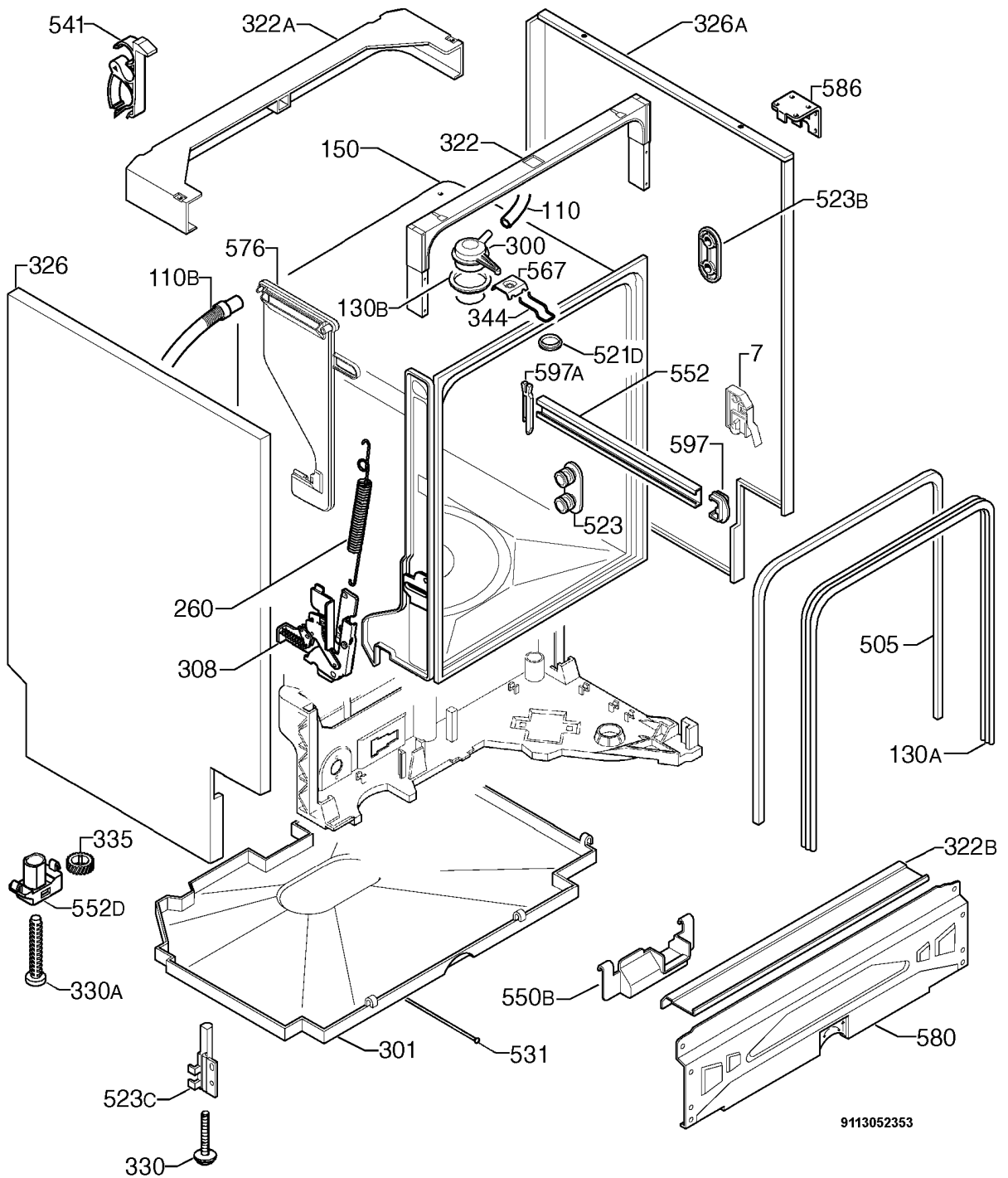
| <b>CONTENTS</b>                                 | <b>PAGE N°</b>     |
|---|--------------------|
| <b>VARIANT CHANGE SUMMARY and RELEASE DATES</b> | <b>2</b>           |
| <b>CONTENTS</b>                                 | <b>3</b>           |
| <b>CABINET and BASE ASSEMBLY</b>                | <b>4 &amp; 5</b>   |
| <b>PANEL TOP and CONTROL PANEL ASSEMBLY</b>     | <b>6 &amp; 7</b>   |
| <b>ELECTRICAL COMPONENTS</b>                    | <b>8 &amp; 9</b>   |
| <b>PUMP, SUMP and HYDRAULIC SYSTEM</b>          | <b>10 &amp; 11</b> |
| <b>DOOR ASSEMBLY</b>                            | <b>12 &amp; 13</b> |
| <b>BASKET ASSEMBLY</b>                          | <b>14 &amp; 15</b> |

**NOTE: In Parts Listings**

**N.I. = Not Illustrated**

**N.P.A. = No Part Available**

**N.P.N. = Not Used on this Model**



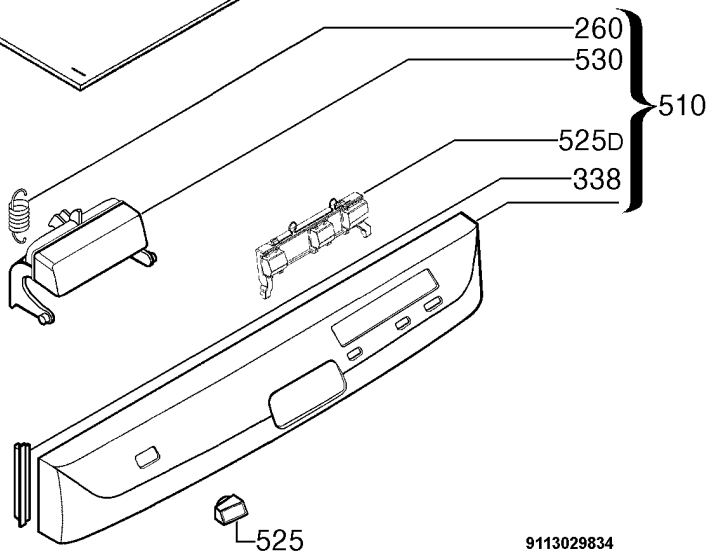
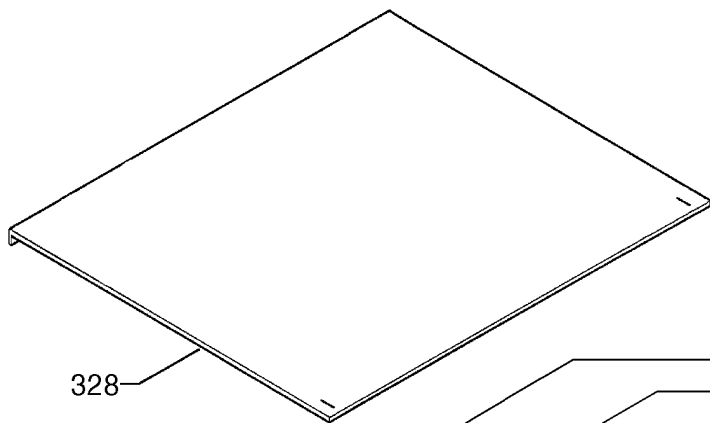
MODEL: WDU903SA

PNC 911946268 00

EX. VIEW 9113052353

CABINET and BASE  
ASSEMBLY

| ITEM | PART N°         | DESCRIPTION Ex. 9113052353             | QTY |
|------|-----------------|--|-----|
| 7    | 1170119-03/4    | Microswitch Lamp                       | 1   |
| 110  | 1528324-11/2    | Tube Sprayer Black x 1100mm Long       | 1   |
| 110B | 1527937-11/2    | Hose Drying x 730mm Long               | 1   |
| 130A | 1171265018      | Sealing Outer x 1730mm Long            | 1   |
| 130B | 8996461225-60/0 | Gasket Sprayer                         | 1   |
| 150  | N.P.A.          | Tub                                    | -   |
| 260  | 1528762-00/6    | Spring Door Hinge                      | 2   |
| 300  | 1118130-00/2    | Top Part Nozzle                        | 1   |
| 301  | 1526298-07/8    | Bottom Cabinet                         | 1   |
| 308  | 50286437-00/4   | Kit Door Hinge Right-Left              | 1   |
| 322  | 1525280-42/4    | Crossbar Front Upper                   | 1   |
| 322A | 1170350-01/9    | Crossbar Back Upper                    | 1   |
| 322B | 1527256-10/9    | Crossbar Front Bottom                  | 1   |
| 326  | 1526790-84/3    | Side Panel Left Black                  | 1   |
| 326A | 1526790-94/2    | Side Panel Right Black                 | 1   |
| 330  | 1526617-02/0    | Adjustable Foot Front                  | 2   |
| 330A | 1526994-00/7    | Adjustable Foot Central                | 1   |
| 335  | 1527142-00/2    | Cog Wheel                              | 1   |
| 344  | 1522344-05/8    | Latch                                  | 1   |
| 505  | 1526715-01/4    | Trimming Tub Black x 1710mm Long       | 1   |
| 521D | 1526576-00/2    | Hole Cover Latch                       | 1   |
| 523  | 50299970009     | Wheel Support Kit Dark Grey (4 Pieces) | 1   |
| 523B | 1521220-10/1    | Stiffening Holder Roller               | 4   |
| 523C | 1526315-03/9    | Foot Support Front Left                | 1   |
| 523C | 1526315-13/8    | Foot Support Front Right               | 1   |
| 531  | 1170685-00/0    | Adjusting Screw Foot Central           | 1   |
| 541  | 1526417-00/9    | Hose Clamp                             | 1   |
| 550B | 1522345-03/0    | Wiring Protection                      | 1   |
| 552  | 1170542-00/3    | Rail Basket Upper                      | 2   |
| 552D | 1523698-06/4    | Guidance Rail Foot Central             | 1   |
| 567  | 1523236-03/0    | Plaque (Speed Clip)                    | 1   |
| 576  | 1171664-11/1    | Adaptor Container Cup Transparent      | 1   |
| 580  | 50290285-00/1   | Enclosure Front Bottom                 | 1   |
| 586  | 1170209-00/9    | Fixing Bracket Top                     | 2   |
| 597  | 1520479-30/2    | Basket Stop Front Dark Grey            | 2   |
| 597A | 8996461234-05/7 | Stopper Back Dark Grey                 | 2   |
| N.I. | ES6060          | Kit Tape Foil Steam Protection         | 1   |
| N.I. | 1171097-00/7    | Protection Stud                        | 1   |
| N.I. | 50282092-00/1   | Fixing Clip Stud (4 Pieces)            | 1   |



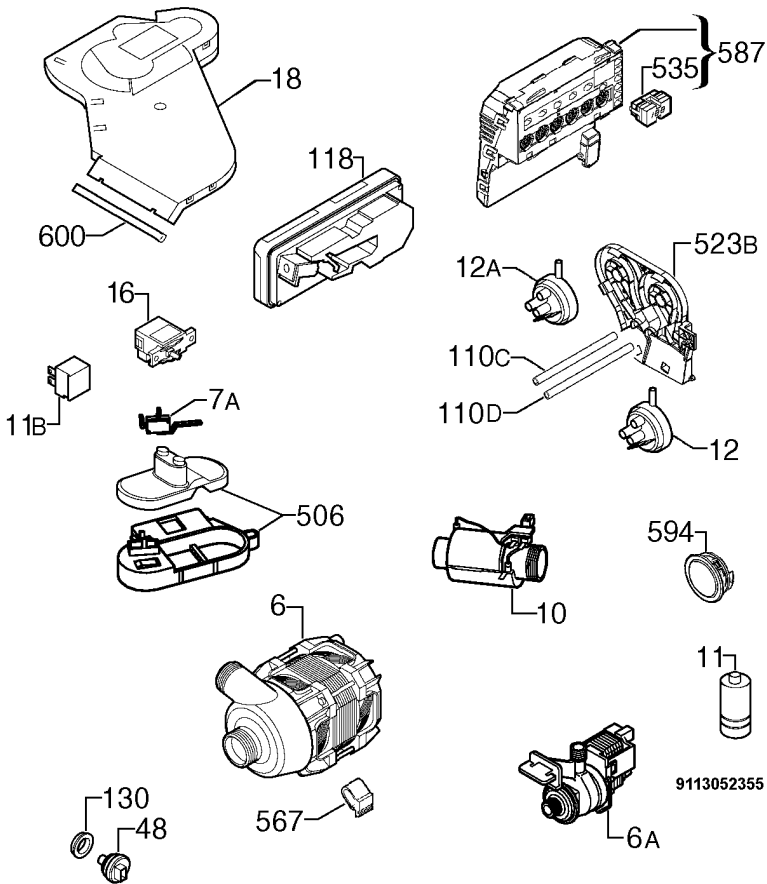
9113029834

**MODEL: WDU903SA**

**PNC 911946268 00**

**EX. VIEW 9113029834  
PANEL TOP and  
CONTROL PANEL ASSEMBLY**

| <b>ITEM</b> | <b>PART N°</b>       | <b>DESCRIPTION Ex. 9113029834</b>     | <b>QTY</b> |
|-------------|----------------------|---------------------------------------|------------|
| 260A        | <b>1525773-00/6</b>  | Spring Handle Latch                   | 1          |
| 328         | <b>1170695-31/4</b>  | Metal Panel Upper Black               | 1          |
| 338         | <b>1525578-80/1</b>  | Side Plate Grey                       | 1          |
| 510         | <b>1170745-60/6</b>  | Control Panel Silkscreened Complete   | 1          |
| 525         | <b>1170944-01/9</b>  | ON/OFF Button                         | 1          |
| 525D        | <b>1171107-11/1</b>  | Buttons Programmes Silver             | 1          |
| 530         | <b>1170749-10/3</b>  | Handle Control Panel Grey             | 1          |
|             |                      |                                       |            |
| N.I.        | <b>50286359-00/0</b> | Fixing Screw Metal Panel 4.2 x 13 TTL | 1          |



9113052355

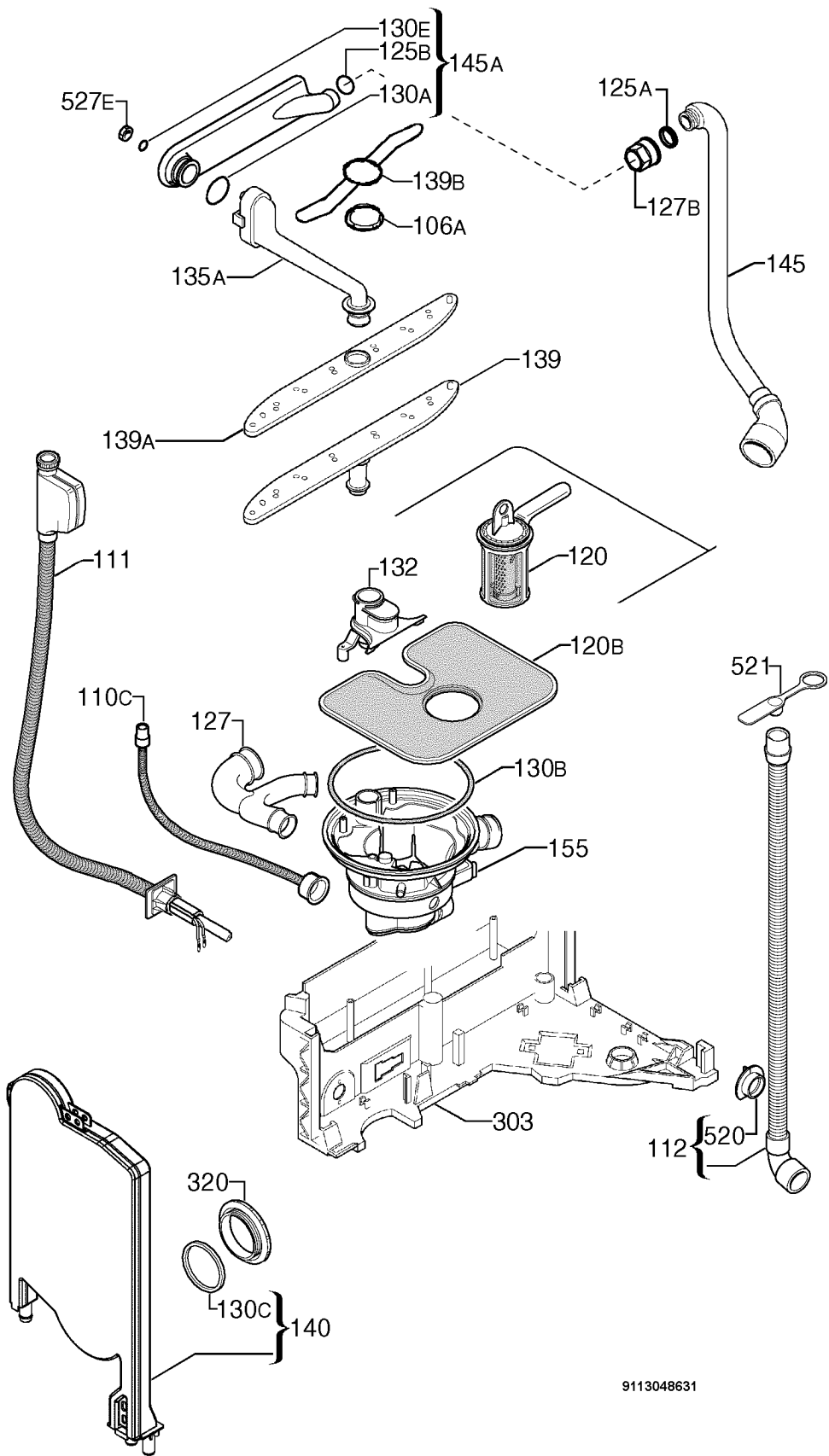


MODEL: WDU903SA

PNC 911946268 00

EX. VIEW 9113052355  
ELECTRICAL COMPONENTS

| ITEM | PART N°         | DESCRIPTION Ex. 9113052355             | QTY |
|------|-----------------|--|-----|
| 6    | 1113196008      | Washing Motor Tachometric              | 1   |
| 6A   | 1528261-02/5    | Drain Pump 50Hz                        | 1   |
| 7A   | 1520393-11/5    | Microswitch Anti-Overflow              | 1   |
| 10   | 50297618-00/6   | Heating Element 230V/2000W Ø32mm       | 1   |
| 11   | 50287485-00/2   | Running Capacitor Shank                | 1   |
| 11B  | 0144400042      | Interference Suppressor                | 1   |
| 12   | 1528189-02/8    | Pressure Switch Level 65/45            | 1   |
| 12A  | 1528189-12/7    | Pressure Switch Safety 123/98          | 1   |
| 16   | 1111433-60/1    | Main Switch (O/I)                      | 1   |
| 18   | 0026400003      | Ventilator                             | 1   |
| 48   | 1113160004      | Temperature Sensor Turbidity Sensor    | 1   |
| 110C | 1170450-40/5    | Tube Pressure Switch Safety x 515 Long | 1   |
| 110D | 1170450-51/2    | Tube Pressure Switch Level x 525 Long  | 1   |
| 118  | 50285882-00/2   | Kit Detergent Dispenser                | 1   |
| 130  | 0208400152      | Sealing Sleeve Temperature Sensor      | 1   |
| 506  | 50297120-00/3   | Kit Support Float                      | 1   |
| 523B | 1170351-00/9    | Mount Pressure Switch                  | 1   |
| 535  | 1118838-00/0    | Diffuser Display 16.2mm                | 1   |
| 567  | 1171934019      | Motor Bracket Buffer                   | 1   |
| 587  | 973911946268001 | Configured Electronic EDW1500          | 1   |
| 594  | 4055020-18/6    | Collar Lens Complete                   | 1   |
|      |                 |  |     |
| N.I. | 1526426-01/8    | Electric Cable Blower                  | 1   |
| N.I. | 1526491-01/2    | Electric Cable Anti-Overflow Gasket    | 1   |
| N.I. | 1170862-31/0    | Power Cable AUS/NZ                     | 1   |
| N.I. | 1170920-05/0    | Harness Complete                       | 1   |

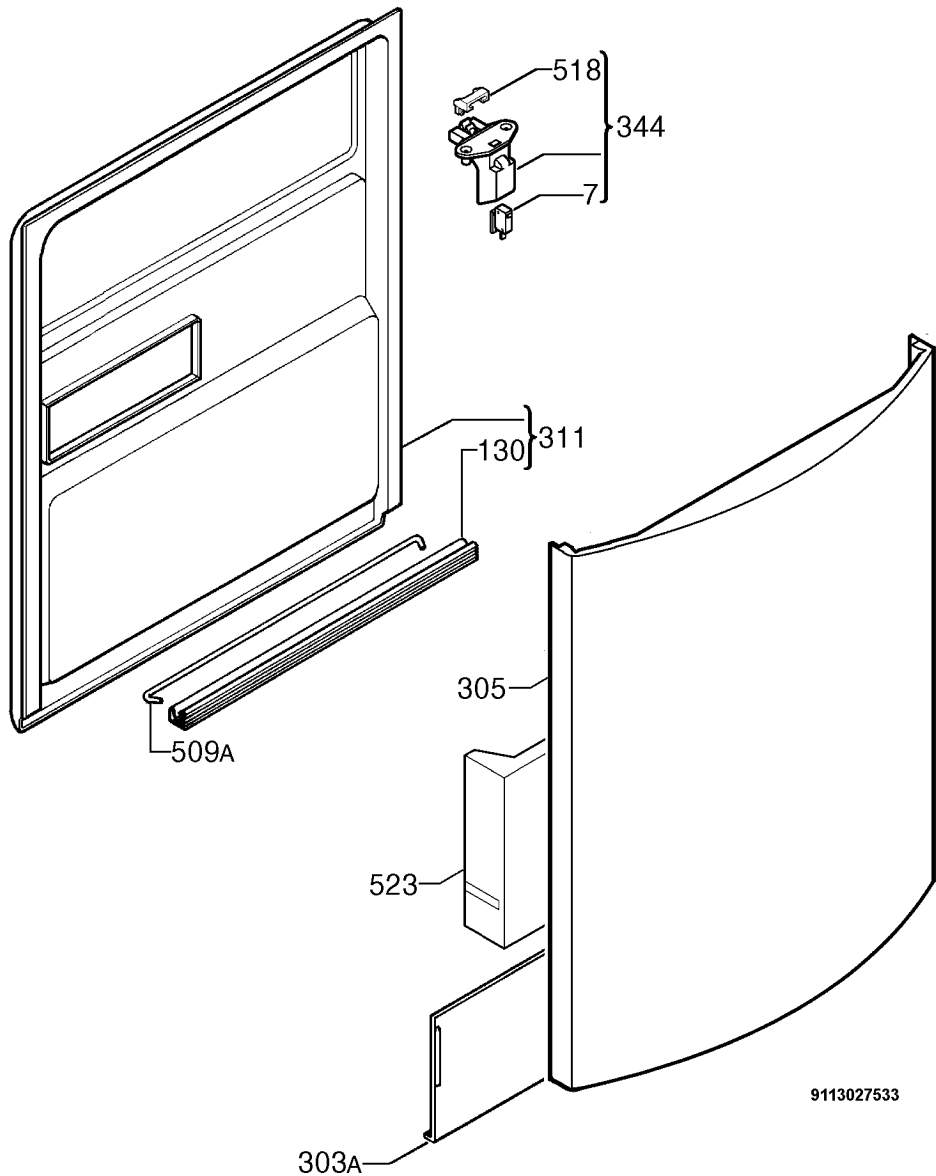


| ITEM | PART N°       | DESCRIPTION Ex. 9113048631          | QTY |
|------|---------------|-------------------------------------|-----|
| 106A | 1118134-00/4  | Lower Part Spray Arm                | 1   |
| 110C | 1525986-10/3  | Tube Container Cup Sump             | 1   |
| 111  | 50295662-00/6 | Inlet Hose Water Block x 1500mm     | 1   |
| 112  | 1526492424    | Discharge Pipe Complete x 2230mm    | 1   |
| 120  | 50297774-00/7 | Drain Filter Complete Light Grey    | 1   |
| 120B | 1524360-00/3  | Filter Inox                         | 1   |
| 125A | 50282650-00/6 | O-Ring Manifold Outer               | 1   |
| 125B | 50227938-00/3 | O-Ring Manifold Inner               | 1   |
| 127  | 1118796208    | Pipe Union Y                        | 1   |
| 127B | 1523118204    | Pipe Union Manifold Dark Grey       | 1   |
| 130A | 1523119-01/2  | Seal Channel Drainage               | 1   |
| 130B | 0208400147    | O-Ring Sump                         | 1   |
| 130C | 50659231-00/0 | Round Seal Container Cup            | 1   |
| 130E | 1522802-00/6  | Sealing Strip                       | 1   |
| 132  | 0012400051    | Column Support Lower Spray Arm      | 1   |
| 135A | 1526687-52/8  | Channel Drainage Dark Grey Complete | 1   |
| 139  | 1526523-40/0  | Lower Spray Arm Dark Grey           | 1   |
| 139A | 1526520-30/7  | Spray Arm Upper Dark Grey           | 1   |
| 139B | 1118131-00/0  | Spray Arm                           | 1   |
| 140  | 1170481-30/1  | Container Cup Small                 | 1   |
| 145  | 1528059-00/7  | Manifold Outer Ø32mm                | 1   |
| 145A | 1172023-01/0  | Manifold Horizontal Dark Grey       | 1   |
| 155  | 1527957110    | Sump Pipe Union Complete            | 1   |
| 303  | 1526292-09/7  | Basement                            | 1   |
| 320  | 1526272-10/7  | Grill Vapour Outlet Dark Grey       | 1   |
| 520  | 1526862-00/6  | Flange Discharge Pipe               | 1   |
| 521  | 1527389-00/9  | Stopper Drainage Hose               | 1   |
| 527E | 50286080-00/2 | Nut Water Distributor               | 1   |
| N.I. | 1529175109    | Fixing Clamp Sensor Ø35.6mm         | 1   |
| N.I. | 4055034963    | Service Kit Electric Cable Sensor   | 1   |

If a Customer needs to extend their Drain Hose, order the following components:  
**0571400142 Hose Drain (2M length)**, **0182200002 Ferrule Hose Joiner (19mm)**  
and 2 x **0005001019 Clamp**

For extensions less than 2 metres, use **ES5323K Kit Hose Flex Drain (1M)**

**NOTE:** Total Drain Hose length must not exceed 4 metres.



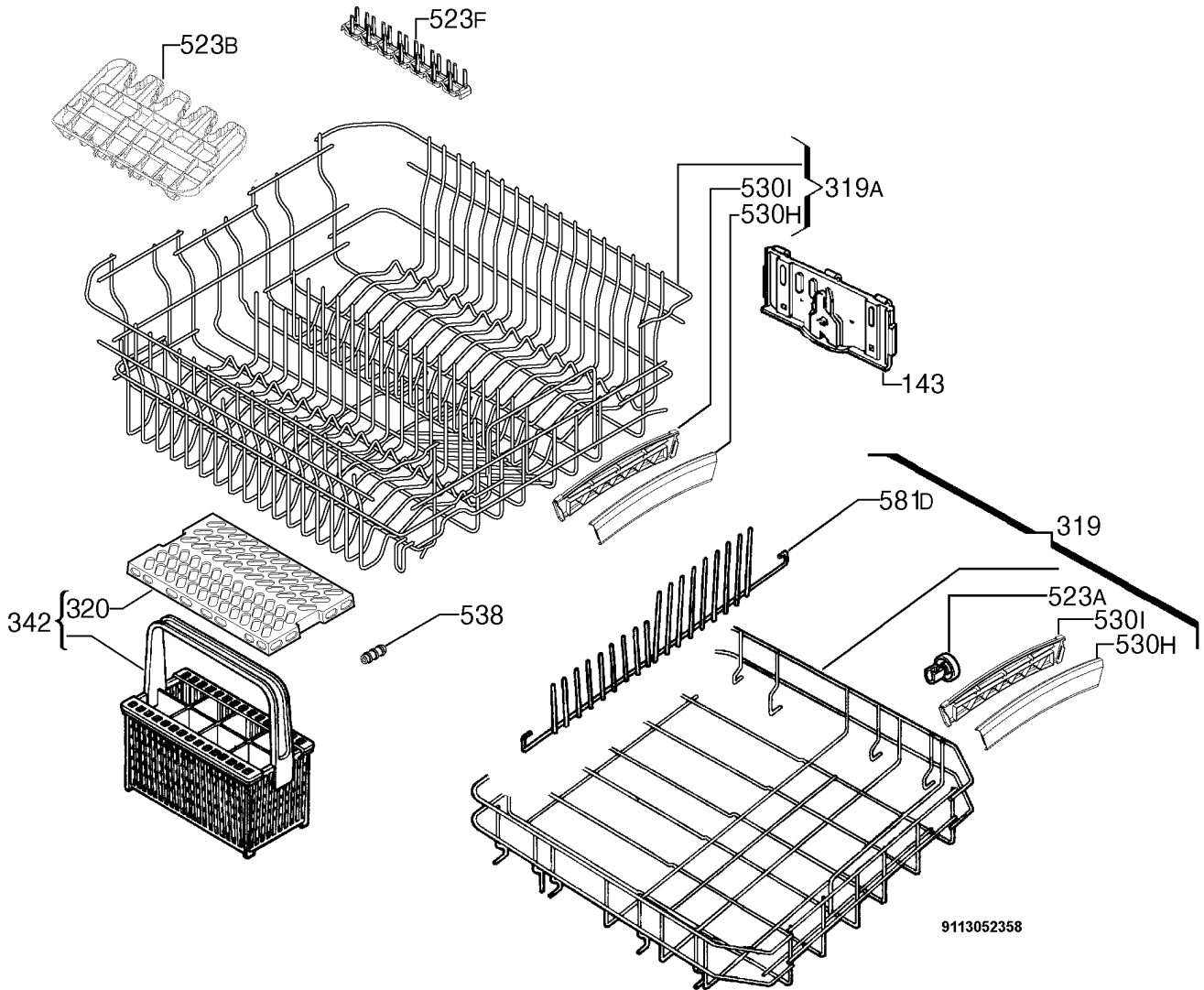
9113027533

**MODEL: WDU903SA**

**PNC 911946268 00**

**EX. VIEW 9113027533  
DOOR COMPLETE  
ASSEMBLY**

| <b>ITEM</b> | <b>PART N°</b>       | <b>DESCRIPTION Ex. 9113027533</b>   | <b>QTY</b> |
|-------------|----------------------|-------------------------------------|------------|
| 7           | <b>50287927-00/3</b> | Microswitch Door                    | 1          |
| 130         | <b>1527401-00/2</b>  | Door Gasket Bottom Black x 550 Long | 1          |
| 303A        | <b>1521005-30/4</b>  | Plinth Sliding Type Grey            | 1          |
| 305         | <b>1170296261</b>    | Door Inox                           | 1          |
| 311         | <b>50290200-00/0</b> | Inner Door Complete                 | 1          |
| 344         | <b>1526377-08/8</b>  | Latch Bridging Plug Complete        | 1          |
| 509A        | <b>1520419-14/2</b>  | Tie Hinge                           | 1          |
| 518         | <b>1526414-02/2</b>  | Bridge Door Lock                    | 1          |
| 523         | <b>1529407-00/7</b>  | Stiffening Door                     | 1          |
|             |                      |                                     |            |
| N.I.        | <b>50279682-00/4</b> | Plaque Door (Speed Clip)            | 1          |



**MODEL: WDU903SA****PNC 911946268 00****EX. VIEW 9113052358  
BASKET ASSEMBLY**

| <b>ITEM</b> | <b>PART N°</b>       | <b>DESCRIPTION Ex. 9113052358</b>     | <b>QTY</b> |
|-------------|----------------------|---------------------------------------|------------|
| 143         | <b>1527359-32/5</b>  | Adjustment Right Dark Grey QUICK LIFT | 1          |
|             | <b>1527359-40/8</b>  | Adjustment Left Dark Grey QUICK LIFT  | 1          |
| 319         | <b>1170595-70/4</b>  | Dishwasher Basket Bottom Dark Grey    | 1          |
| 319A        | <b>1170539-73/6</b>  | Dishwasher Basket Upper Dark Grey     | 1          |
| 320         | <b>REF ITEM 342</b>  | Grating Cutlery Basket Dark Grey      | 1          |
| 342         | <b>1525593206</b>    | Cutlery Basket Dark Grey Complete     | 1          |
| 523A        | <b>50286965-00/4</b> | Wheel Kit Dark Grey (8 Pieces)        | 1          |
| 523B        | <b>1170294-01/9</b>  | Support Cup Silver                    | 4          |
| 523F        | <b>1528354-10/1</b>  | Support Measure Cup Silver            | 4          |
| 530H        | <b>1119107-10/8</b>  | Handle Front Dishwasher Basket        | 1          |
| 530I        | <b>1119108-11/4</b>  | Handle Rear Dishwasher Basket         | 1          |
| 538         | <b>1170324-00/6</b>  | Space Compensator Upper Basket        | 2          |
| 581D        | <b>1527092-41/3</b>  | Separator Rear Back                   | 2          |
|             | <b>1527092-51/2</b>  | Separator Rear Front                  | 2          |