



**ELECTROLUX HOME PRODUCTS PTY LTD**  
ABN 51 004 762 341

Technical Publication N° CE215.doc

Issue: 1  
Date: 10/06

**WEB SITE ADDRESS: [www.partnship.com.au](http://www.partnship.com.au)**

***WESTINGHOUSE***

***ELECTRIC***  
***600 UPRIGHT COOKERS***  
***“4U” SERIES***

***MODELS:***

<b>4U600W*04</b>	<b>(Mercury)</b>
<b>4U601W*04</b>	<b>(Columbo)</b>
<b>4U602W*04</b>	<b>(Neptune)</b>
<b>4U603W*04</b>	<b>(Saturn)</b>
<b>4U604W*04</b>	<b>(Gemini)</b>
<b>4U605W*04</b>	<b>(Polaris)</b>
<b>4U606W*04</b>	<b>(Apollo)</b>
<b>4U608W*04</b>	<b>(Alpha)</b>
<b>4U609W*04</b>	<b>(Jupiter)</b>

<b>VARIANT CHANGE SUMMARY</b>
-------------------------------

<b>*04</b>	<b>Introduction of new Multi Function Switches and revised wiring to suit.</b>
------------	--

<b>First Built Dates:</b>	
---------------------------	--

<b>4U600W*04</b>	<b>9/06</b>
<b>4U601W*04</b>	<b>9/06</b>
<b>4U602W*04</b>	<b>9/06</b>
<b>4U603W*04</b>	<b>9/06</b>
<b>4U604W*04</b>	<b>9/06</b>
<b>4U605W*04</b>	<b>9/06</b>
<b>4U606W*04</b>	<b>9/06</b>
<b>4U607W*04</b>	<b>9/06</b>
<b>4U608W*04</b>	<b>9/06</b>
<b>4U609W*04</b>	<b>9/06</b>

<b>CONTENTS</b>	<b>PAGE N°</b>
FIRST BUILT DATES	2
CONTENTS	3
OVEN ASSEMBLY 4U600W; 4U601W; 4U602W & 4U609W	4 & 5
OVEN ASSEMBLY 4U603W; 4U604W; 4U605W & 4U606W	6 & 7
OVEN ASSEMBLY 4U608W	8 & 9
CHASSIS ASSEMBLY 4U600W; 4U601W & 4U609W	10 & 11
CHASSIS ASSEMBLY 4U602W; 4U603W 4U604W; 4U605W & 4U606W	12 & 13
CHASSIS ASSEMBLY 4U608W	14 & 15
SEPARATE GRILL ASSEMBLY 4U608W	16
INTERNAL PACK 4U600W; 4U601W & 4U602W	17
INTERNAL PACK 4U603W & 4U604W	18
INTERNAL PACK 4U605W & 4U606W	19
INTERNAL PACK 4U608W	20
INTERNAL PACK 4U609W	21
HOB ASSEMBLY 4U600W; 4U601W; 4U602W; 4U603W & 4U604W	22 & 23
HOB ASSEMBLY 4U605W; 4U606W; 4U608W & 4U609W	24 & 25
CONTROL PANEL ASSEMBLY 4U600W	26 & 27
CONTROL PANEL ASSEMBLY 4U601W	28 & 29
CONTROL PANEL ASSEMBLY 4U602W	30 & 31
CONTROL PANEL ASSEMBLY 4U603W	32 & 33
CONTROL PANEL ASSEMBLY 4U604W	34 & 35
CONTROL PANEL ASSEMBLY 4U605W	36 & 37
CONTROL PANEL ASSEMBLY 4U606W	38 & 39
CONTROL PANEL ASSEMBLY 4U608W	40 & 41
CONTROL PANEL ASSEMBLY 4U609W	42 & 43
INSTALLATION BAG 4U600W; 4U601W; 4U602W; 4U603W; 4U604W; 4U605W; 4U606W; 4U608W & 4U609W	44
OVEN DOOR ASSEMBLY 4U600W; 4U601W; 4U602W; 4U603W; 4U604W; 4U605W; 4U606W; 4U608W & 4U609W	45
GRILL DOOR ASSEMBLY 4U608W	46
DRAWER ASSEMBLY 4U600W; 4U601W; 4U602W; 4U603W; 4U604W; 4U605W; 4U606W & 4U609W	47
DRAWER ASSEMBLY 4U608W	48
CIRCUIT DIAGRAM 4U600W; 4U601W & 4U602W	49
CIRCUIT DIAGRAM 4U603W	50
CIRCUIT DIAGRAM 4U604W	51
CIRCUIT DIAGRAM 4U605W	52
CIRCUIT DIAGRAM 4U606W	53
CIRCUIT DIAGRAM 4U608W	54
CIRCUIT DIAGRAM 4U609W	55

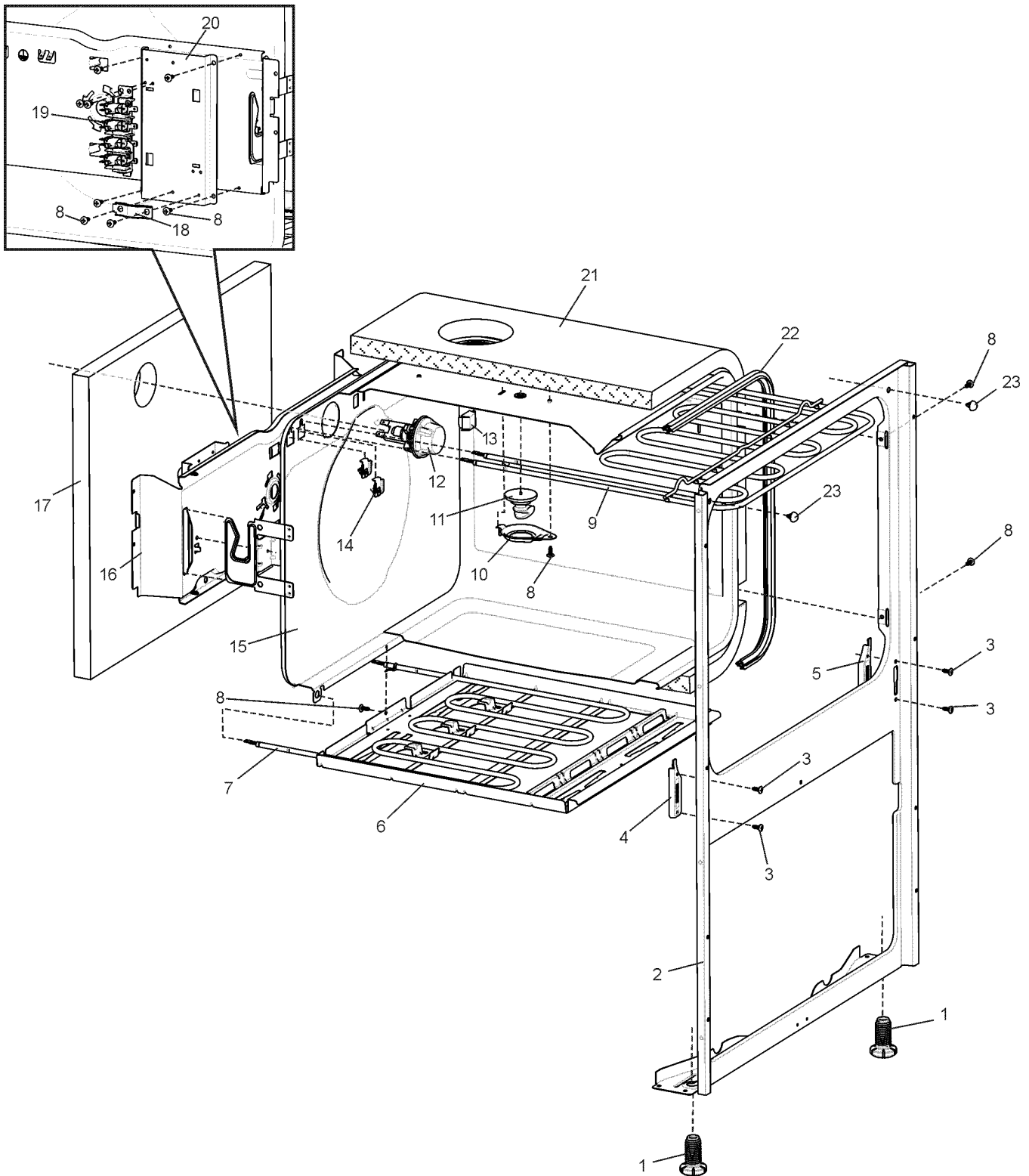
**NOTE: In Parts Listings**

**N.I. = Not Illustrated**  
**N.P.A. = No Part Available**  
**N.P.N. = Not Used on this Model**

MODELS: 4U600W\*04  
4U602W\*04

4U601W\*04  
4U609W\*04

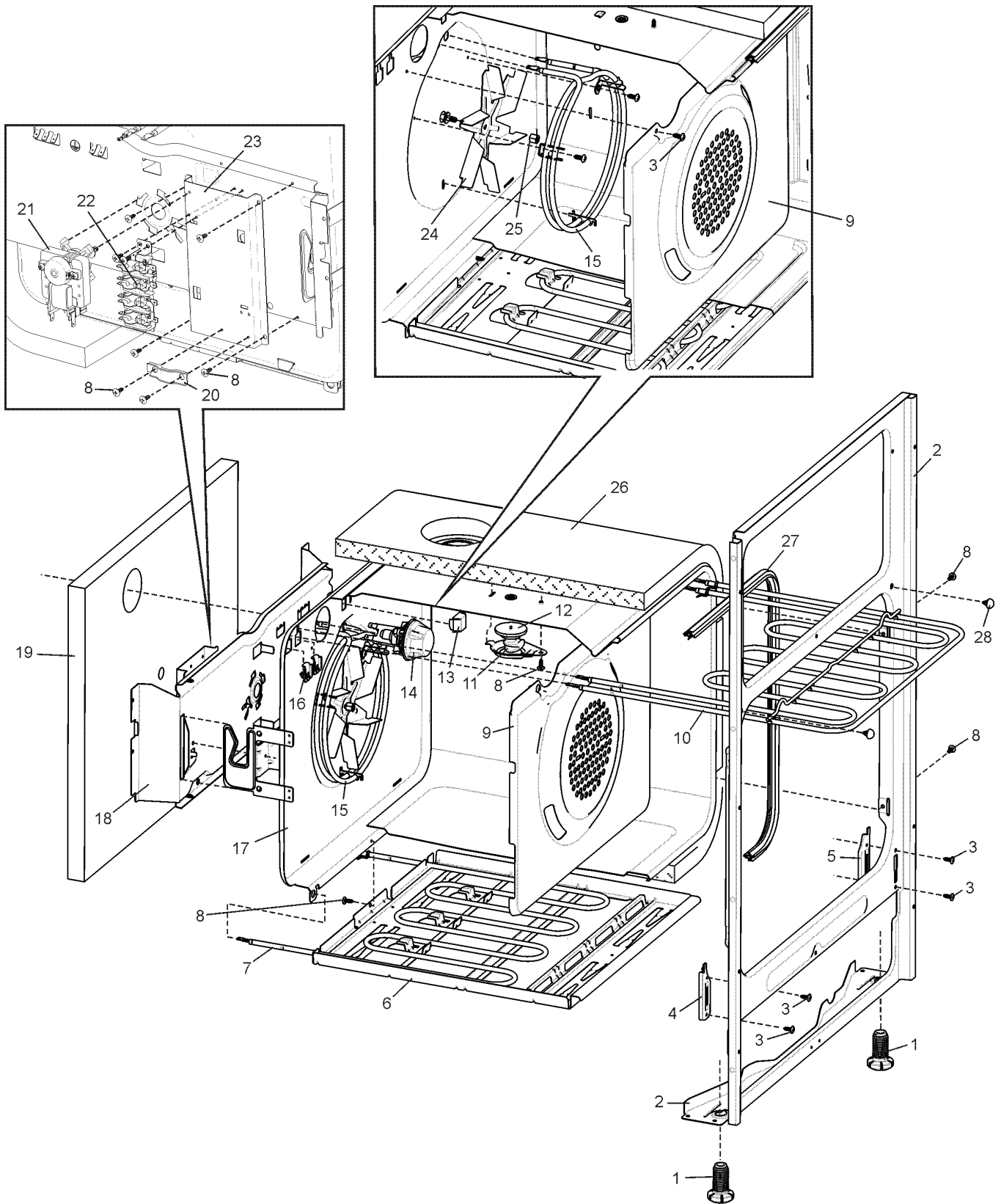
EX. VIEW DRAWING 5397  
OVEN ASSEMBLY



ITEM	PART N°	DESCRIPTION Ex. 5397	QTY
1	<b>0523 001 040</b>	FOOT LEVELLING UPRIGHT	2
2	<b>0081 009 207</b>	FRAME FRONT ENAM 600UP GIO	1
3	<b>0701 009 027</b>	SCREW #8 X 1/2 MUSH #2PH AB BK	x
4	<b>0133 002 223</b>	COUNTER SUPPORT LH U/R BIOS	1
5	<b>0133 002 224</b>	COUNTER SUPPORT RH U/R BIOS	1
6	<b>0028 025 386</b>	COVER CLEAN HEAT BIOS	1
7	<b>0122 004 537</b>	ELEMENT C/HEAT 1800W S/S321	1
8	<b>0701 009 033</b>	SCREW #8 X 8MM HEX/MULTI	x
9	<b>0122 004 543</b>	ELEMENT GRILL/BOOST 3000W	1
10	<b>0028 025 403</b>	COVER RETAINING LATCH	1
11	<b>0046 001 024</b>	LATCH ELEMENT SUPPORT BIOS	1
12	<b>389 0793 04</b>	HOLDER LAMP ASSY BIOS	1
12	<b>LM003</b>	LAMP 25W SES E14 300°C CLEAR	1
13	<b>0125 008 371</b>	CLIP THERMOSTAT BIOS	1
14	<b>0125 008 345</b>	CLIP ELEMENT MOUNT OC98/UC20	4
15	<b>0395 002 133</b>	OVEN ENAM EL G/BOOST BIOS	1
16	<b>0489 001 147</b>	BRACE OVEN REAR 600UP	1
17	<b>0374 005 198</b>	INSULATION OVEN BACK BIOS	1
18	<b>0005 001 163</b>	CLAMP SERVICE CORD NZ	1
19	<b>0003 012 590</b>	BAR CONNECTOR W/EARTH BIOS	1
20	<b>0030 024 232</b>	BRACKET MOUNT TERM BLK 600UP	1
21	<b>0374 005 197</b>	INSULATION OVEN WRAP ELEC BIOS	1
22	<b>0208 003 444</b>	SEAL OVEN BIOS	1
23	<b>0589 001 032</b>	BUMPER STOP BLACK	2
N.I.	<b>0038 009 609</b>	PNL COVER CLEAN HEAT BOTTOM	1



ITEM	PART N°	DESCRIPTION	Ex. 5398	QTY
1	<b>0523 001 040</b>	FOOT LEVELLING UPRIGHT		2
2	<b>0081 009 207</b>	FRAME FRONT ENAM 600UP GIO		1
3	<b>0701 009 027</b>	SCREW #8 X 1/2 MUSH #2PH AB BK		6
4	<b>0133 002 223</b>	COUNTER SUPPORT LH U/R BIOS		1
5	<b>0133 002 224</b>	COUNTER SUPPORT RH U/R BIOS		1
6	<b>0028 025 386</b>	COVER CLEAN HEAT BIOS		1
7	<b>0122 004 537</b>	ELEMENT C/HEAT 1800W S/S321		1
8	<b>0701 009 033</b>	SCREW #8 X 8MM HEX/MULTI		x
9	<b>0038 016 777</b>	PANEL FAN COVER ELEC ENAM BIOS		1
10	<b>0122 004 543</b>	ELEMENT G/BOOST 3000W - BIOS		1
11	<b>0028 025 403</b>	COVER RETAINING LATCH		1
12	<b>0046 001 024</b>	LATCH ELEMENT SUPPORT BIOS		1
13	<b>0125 008 371</b>	CLIP THERMOSTAT BIOS		1
14	<b>389 0793 04</b>	HOLDER LAMP ASSY BIOS		1
14	<b>LM003</b>	LAMP 25W SES E14 300°C CLEAR		1
15	<b>0122 004 541</b>	ELEMENT FAN 2200W S/S309		1
16	<b>0125 008 345</b>	CLIP ELEMENT MOUNT OC98/UC20		4
17	<b>0395 002 091</b>	OVEN ENAM ELEC M/F BIOS		1
18	<b>0489 001 147</b>	BRACE OVEN REAR 600UP		1
19	<b>0374 005 198</b>	INSULATION OVEN BACK BIOS		1
20	<b>0005 001 163</b>	CLAMP SERVICE CORD NZ		1
21	<b>0214 002 118</b>	MOTOR FAN OVEN - BIOS		1
22	<b>0003 012 590</b>	BAR CONNECTOR W/EARTH BIOS		1
23	<b>0030 024 232</b>	BRACKET MOUNT TERM BLK 600UP		1
24	<b>0026 001 042</b>	FAN IMPELLER OVEN BIOS		1
25	<b>0065 009 240</b>	NUT M6 L/H FAN MOTOR ECM		1
26	<b>0374 005 197</b>	INSULATION OVEN WRAP ELEC BIOS		1
27	<b>0208 003 444</b>	SEAL OVEN BIOS		1
28	<b>0589 001 032</b>	BUMPER STOP BLACK		2
N.I.	<b>0038 009 609</b>	PNL COVER CLEAN HEAT BOTTOM		1



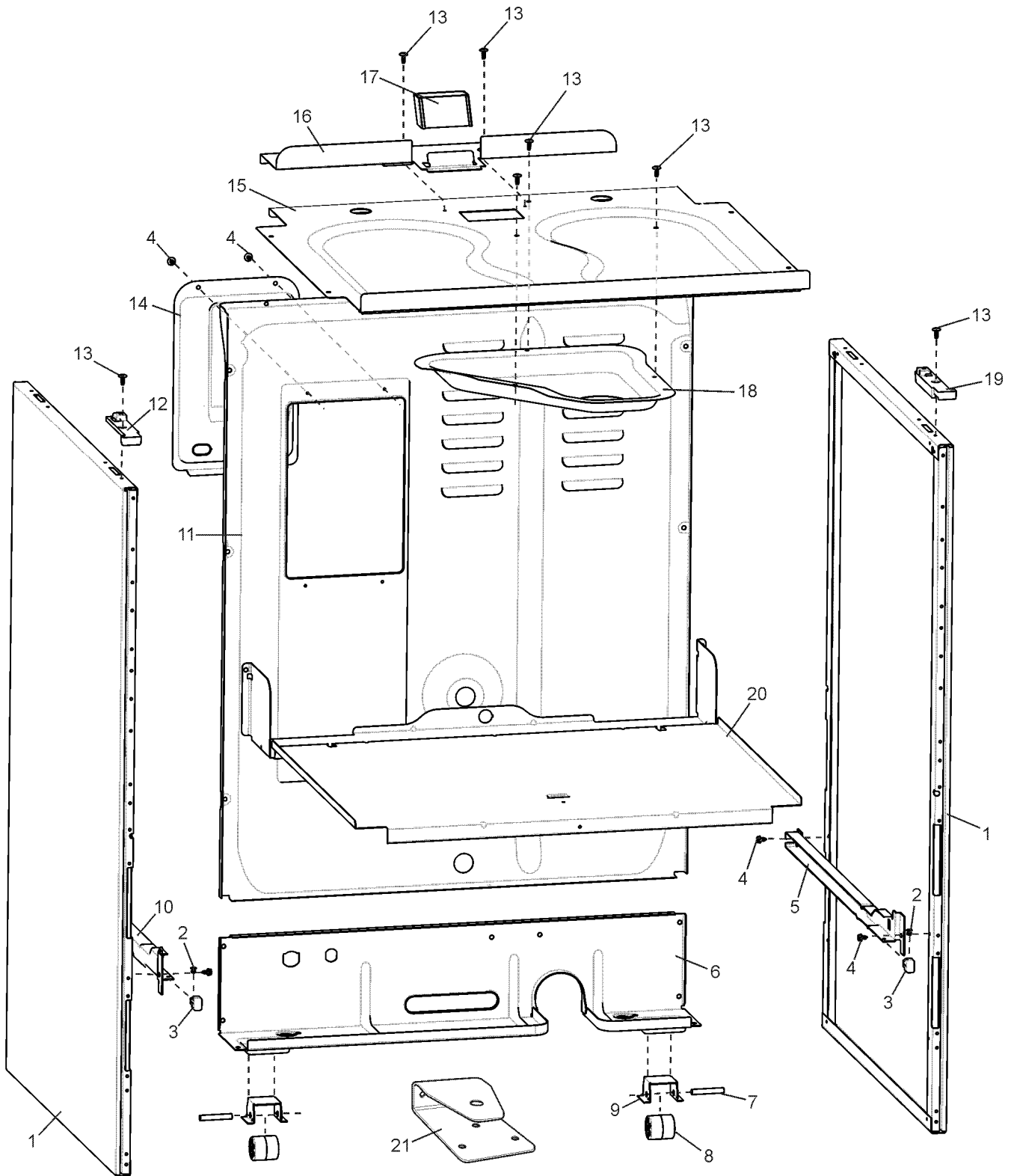


ITEM	PART N°	DESCRIPTION	Ex. 5394	QTY
1	<b>0523 001 040</b>	FOOT LEVELLING UPRIGHT		2
2	<b>0081 009 209</b>	FRAME FRONT ENAM 600UP S/G		1
3	<b>0701 009 027</b>	SCREW #8 X 1/2 MUSH #2PH AB BK		6
4	<b>0133 002 223</b>	COUNTER SUPPORT LH U/R BIOS		1
5	<b>0133 002 224</b>	COUNTER SUPPORT RH U/R BIOS		1
6	<b>0028 025 386</b>	COVER CLEAN HEAT BIOS		1
7	<b>0122 004 537</b>	ELEMENT C/HEAT 1800W S/S321		1
8	<b>0701 009 033</b>	SCREW #8 X 8MM HEX/MULTI		x
9	<b>0038 016 777</b>	PANEL FAN COVER ELEC ENAM BIOS		1
10	<b>0122 004 543</b>	ELEMENT G/BOOST 3000W - BIOS		1
11	<b>0028 025 403</b>	COVER RETAINING LATCH		1
12	<b>0046 001 024</b>	LATCH ELEMENT SUPPORT BIOS		1
13	<b>0125 008 371</b>	CLIP THERMOSTAT BIOS		1
14	<b>389 0793 04</b>	HOLDER LAMP ASSY BIOS		1
14	<b>LM003</b>	LAMP 25W SES E14 300°C CLEAR		1
15	<b>0122 004 541</b>	ELEMENT FAN 2200W S/S309		1
16	<b>0125 008 345</b>	CLIP ELEMENT MOUNT OC98/UC20		4
17	<b>0395 002 091</b>	OVEN ENAM ELEC M/F BIOS		1
18	<b>0489 001 147</b>	BRACE OVEN REAR 600UP		1
19	<b>0374 005 198</b>	INSULATION OVEN BACK BIOS		1
20	<b>0005 001 163</b>	CLAMP SERVICE CORD NZ		1
21	<b>0214 002 118</b>	MOTOR FAN OVEN - BIOS		1
22	<b>0003 012 590</b>	BAR CONNECTOR W/EARTH BIOS		1
23	<b>0030 024 232</b>	BRACKET MOUNT TERM BLK 600UP		1
24	<b>0026 001 042</b>	FAN IMPELLER OVEN BIOS		1
25	<b>0065 009 240</b>	NUT M6 L/H FAN MOTOR		1
26	<b>0374 005 197</b>	INSULATION OVEN WRAP ELEC BIOS		1
27	<b>0208 003 444</b>	SEAL OVEN BIOS		1
28	<b>0589 001 032</b>	BUMPER STOP BLACK		2
N.I.	<b>0038 009 609</b>	PNL COVER CLEAN HEAT BOTTOM		1

MODELS: 4U600W\*04  
4U609W\*04

4U601W\*04

EX. VIEW DRAWING 5380  
CHASSIS ASSEMBLY

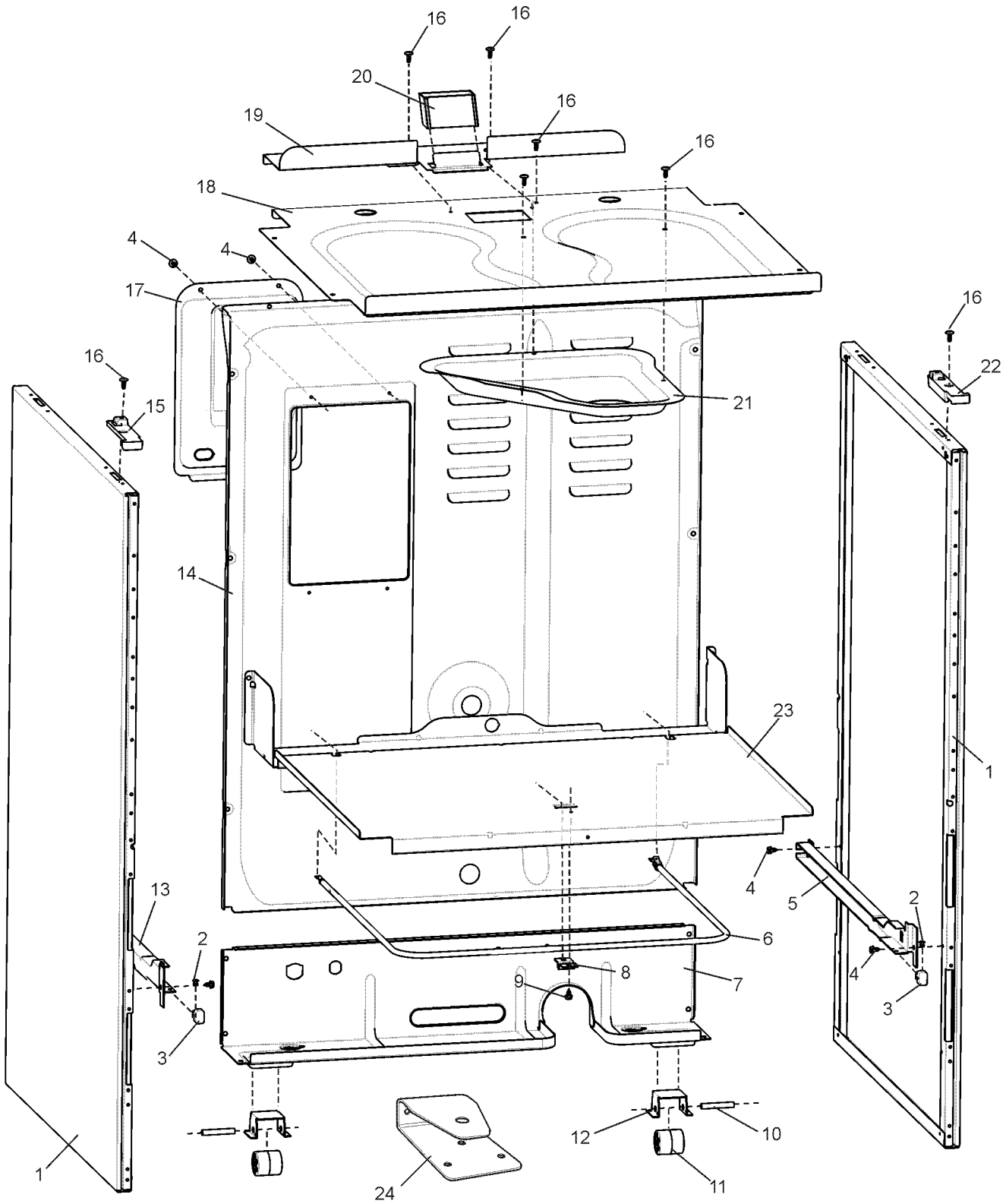


ITEM	PART N°	DESCRIPTION	Ex. 5380	QTY
1	<b>0038 006 814</b>	PANEL SIDE UPRIGHT DPPR		2
2	<b>0708 001 066</b>	RIVET POP 3.2 X 4.8		2
3	<b>0251 001 088</b>	STOP - SLIDE PLASTIC		2
4	<b>0701 009 033</b>	SCREW #8 X 8MM HEX/MULTI		x
5	<b>0024 010 094</b>	SLIDE RUNNER 600RC RH		1
6	<b>0489 001 156</b>	BRACE LOWER 600 FS		1
7	<b>NZ72477</b>	AXLE ROLLER 600		2
8	<b>NZ72475</b>	ROLLER BASE 600 UR		2
9	<b>NZ72476</b>	BRACKET ROLLER NZ		2
10	<b>0024 010 093</b>	SLIDE RUNNER 600RC LH		1
11	<b>0038 008 092</b>	PANEL WIRE COVER GIO 600UP		1
12	<b>0007 009 281</b>	PAD LOCATOR HOB LH 600UP		1
13	<b>0701 009 027</b>	SCREW #8 X 1/2 MUSH #2PH AB BK		x
14	<b>0022 041 136</b>	PLATE COVER TERM BLK ELEC BIOS		1
15	<b>0037 011 523</b>	TRAY SPILL ENAM 600UP		1
16	<b>0030 024 219</b>	BRACKET VENT RETAIN 600UP		1
17	<b>0047 003 101</b>	VENT EXTRUSION 600UP		1
18	<b>0559 001 071</b>	DUCT OVEN GRILL GIO 600UP		1
19	<b>0007 009 282</b>	PAD LOCATOR HOB RH 600UP		1
20	<b>0038 003 300</b>	PANEL DECK WARM DRAW 600UP		1
21	<b>0022 041 149</b>	PLATE ANTI-TILT, NZ 600 WASH		1
N.I.	<b>ES5567</b>	FUSE 15A 250V SLOW CERAMIC 3AB		1
N.I.	<b>0615 001 038</b>	FUSE ASSY 600UP (INC ITEM ES5567)		1

**MODELS:** 4U602W\*04  
4U604W\*04  
4U606W\*04

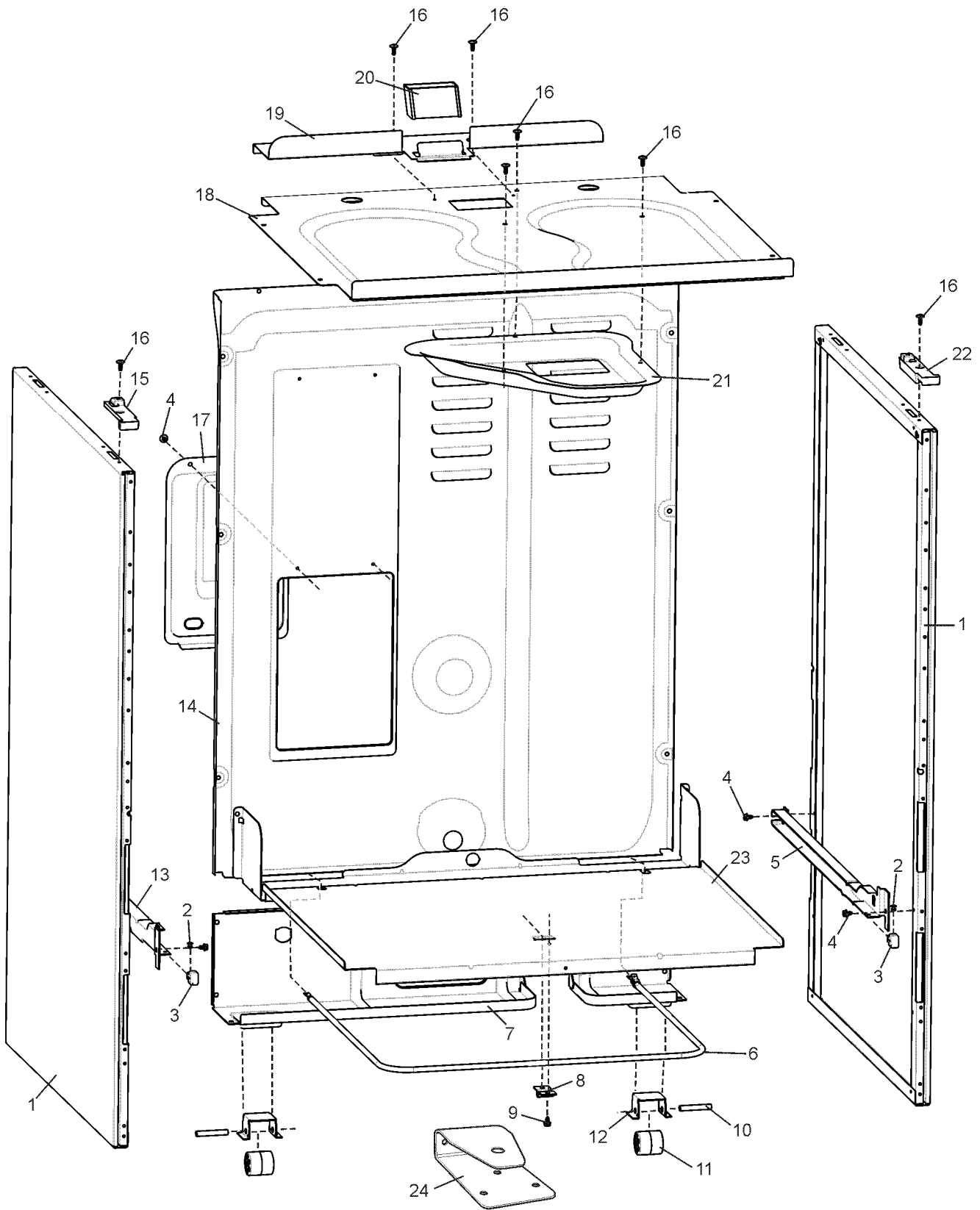
4U603W\*04  
4U605W\*04

**EX. VIEW DRAWING 5373  
CHASSIS ASSEMBLY**



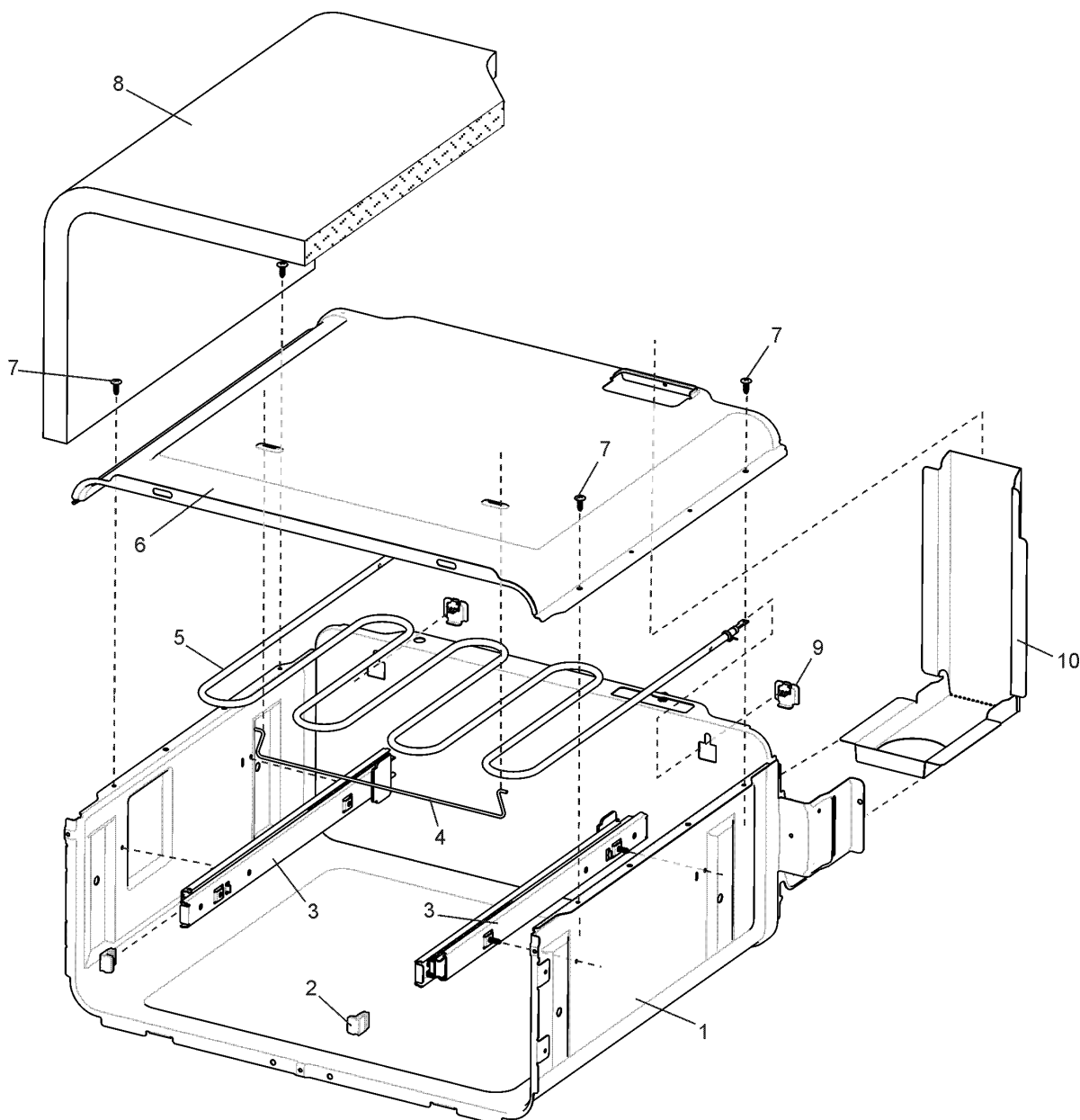
ITEM	PART N°	DESCRIPTION	Ex. 5373	QTY
1	<b>0038 006 814</b>	PANEL SIDE UPRIGHT DPPR		2
2	<b>0708 001 066</b>	RIVET POP 3.2 X 4.8		2
3	<b>0251 001 088</b>	STOP - SLIDE PLASTIC (46001)		2
4	<b>0701 009 033</b>	SCREW #8 X 8MM HEX/MULTI		x
5	<b>0024 010 094</b>	SLIDE RUNNER 600RC RH		1
6	<b>0122 004 557</b>	ELEMENT WARM 400W S/S321		1
7	<b>0489 001 156</b>	BRACE LOWER 600 FS		1
8	<b>0030 024 158</b>	BRACKET STABILITY BOLT 540		1
9	<b>0702 007 056</b>	SCREW #8 X 1/2 PAN #2PH TC BK		1
10	<b>NZ72477</b>	AXLE ROLLER 600		2
11	<b>NZ72475</b>	ROLLER BASE 600 UR		2
12	<b>NZ72476</b>	BRACKET ROLLER NZ		2
13	<b>0024 010 093</b>	SLIDE RUNNER 600RC LH		1
14	<b>0038 008 092</b>	PANEL WIRE COVER GIO 600UP		1
15	<b>0007 009 281</b>	PAD LOCATOR HOB LH 600UP		1
16	<b>0701 009 027</b>	SCREW #8 X 1/2 MUSH #2PH AB BK		x
17	<b>0022 041 136</b>	PLATE COVER TERM BLK ELEC BIOS		1
18	<b>0037 011 523</b>	TRAY SPILL ENAM 600UP		1
19	<b>0030 024 219</b>	BRACKET VENT RETAIN 600UP		1
20	<b>0047 003 101</b>	VENT EXTRUSION 600UP		1
21	<b>0559 001 071</b>	DUCT OVEN GRILL GIO 600UP		1
22	<b>0007 009 282</b>	PAD LOCATOR HOB RH 600UP		1
23	<b>0038 003 300</b>	PANEL DECK WARM DRAW 600UP		1
24	<b>0022 041 149</b>	PLATE ANTI-TILT, NZ 600 WASH		1
N.I.	<b>0165 001 038</b>	FUSE ASSY 600UP (INC ITEM ES5567)		1
N.I.	<b>ES5567</b>	FUSE 15A 250V SLOW CERAMIC 3AB		1
N.I.	<b>0712 003 037</b>	CABLE TIE 4' PLT1M-M30		1

EX. VIEW DRAWING 5382  
CHASSIS ASSEMBLY



ITEM	PART N°	DESCRIPTION	Ex. 5382	QTY
1	<b>0038 006 814</b>	PANEL SIDE UPRIGHT DPPR		2
2	<b>0708 001 066</b>	RIVET POP 3.2 X 4.8		2
3	<b>0251 001 088</b>	STOP - SLIDE PLASTIC (46001)		2
4	<b>0701 009 033</b>	SCREW #8 X 8MM HEX/MULTI		x
5	<b>0024 010 094</b>	SLIDE RUNNER 600RC RH		1
6	<b>0122 004 557</b>	ELEMENT WARM 400W S/S321		1
7	<b>0489 001 156</b>	BRACE LOWER 600 FS		1
8	<b>0030 024 158</b>	BRACKET STABILITY BOLT 540		1
9	<b>0702 007 056</b>	SCREW #8 X 1/2 PAN #2PH TC BK		1
10	<b>NZ72477</b>	AXLE ROLLER 600		2
11	<b>NZ72475</b>	ROLLER BASE 600 UR		2
12	<b>NZ72476</b>	BRACKET ROLLER NZ		2
13	<b>0024 010 093</b>	SLIDE RUNNER 600RC LH		1
14	<b>0038 008 099</b>	PANEL COVER WIRE SEP 600UP		1
15	<b>0007 009 281</b>	PAD LOCATOR HOB LH 600UP		1
16	<b>0701 009 027</b>	SCREW #8 X 1/2 MUSH #2PH AB BK		x
17	<b>0022 041 136</b>	PLATE COVER TERM BLK ELEC BIOS		1
18	<b>0037 011 523</b>	TRAY SPILL ENAM 600UP		1
19	<b>0030 024 219</b>	BRACKET VENT RETAIN 600UP		1
20	<b>0047 003 101</b>	VENT EXTRUSION 600UP		1
21	<b>0559 001 072</b>	DUCT OVEN GRILL SEP 600UP		1
22	<b>0007 009 282</b>	PAD LOCATOR HOB RH 600UP		1
23	<b>0038 003 300</b>	PANEL DECK WARM DRAW 600UP		1
24	<b>0022 041 149</b>	PLATE ANTI-TILT, NZ 600 WASH		1
N.I.	<b>ES5567</b>	FUSE 15A 250V SLOW CERAMIC 3AB		1
N.I.	<b>0165 001 038</b>	FUSE ASSY 600UP (INC ITEM ES5567)		1

MODEL: 4U608W\*04

EX. VIEW DRAWING 5388  
GRILL ASSEMBLY

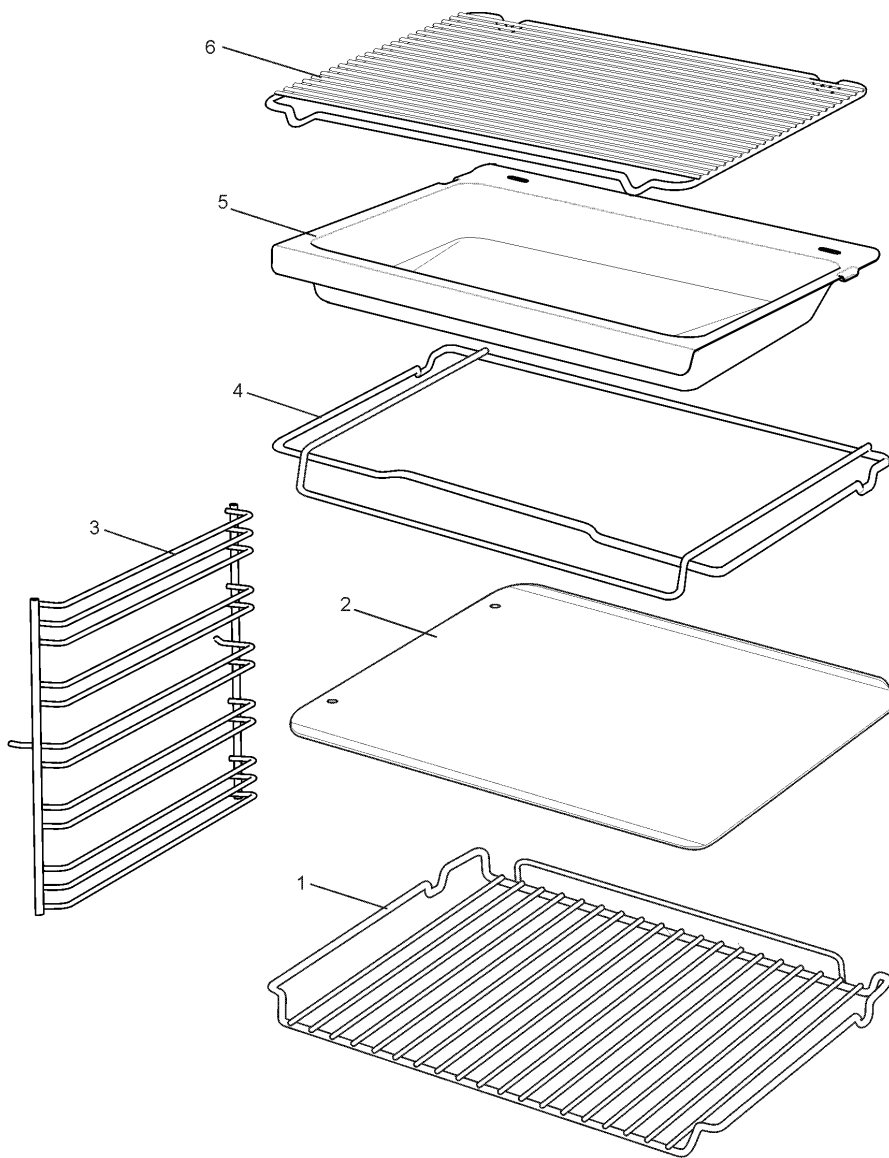
ITEM	PART N°	DESCRIPTION	Ex. 5388	QTY
1	<b>0488 001 393</b>	GRILL BOX ENAM DEEP 600UP		1
2	<b>0589 001 037</b>	BUMPER STOP RUNNER		4
3	<b>0024 010 088</b>	SLIDE GRILL ASSY DOUBLE ACTION		2
4	<b>0012 018 695</b>	SUPPORT ELEMENT GRILL BIOS		1
5	<b>0122 004 538</b>	ELEMENT GRILL 2200W S/S321		1
6	<b>0038 005 622</b>	PANEL TOP ALUMZ 600 BIOS		1
7	<b>0701 009 027</b>	SCREW #8 X 1/2 MUSH #2PH AB BK		8
8	<b>0374 005 222</b>	INSULATION GRILL WRAP 600UP		1
9	<b>0125 008 345</b>	CLIP ELEMENT MOUNT OC98/UC20		2
10	<b>0559 001 073</b>	DUCT OVEN 600UP		1



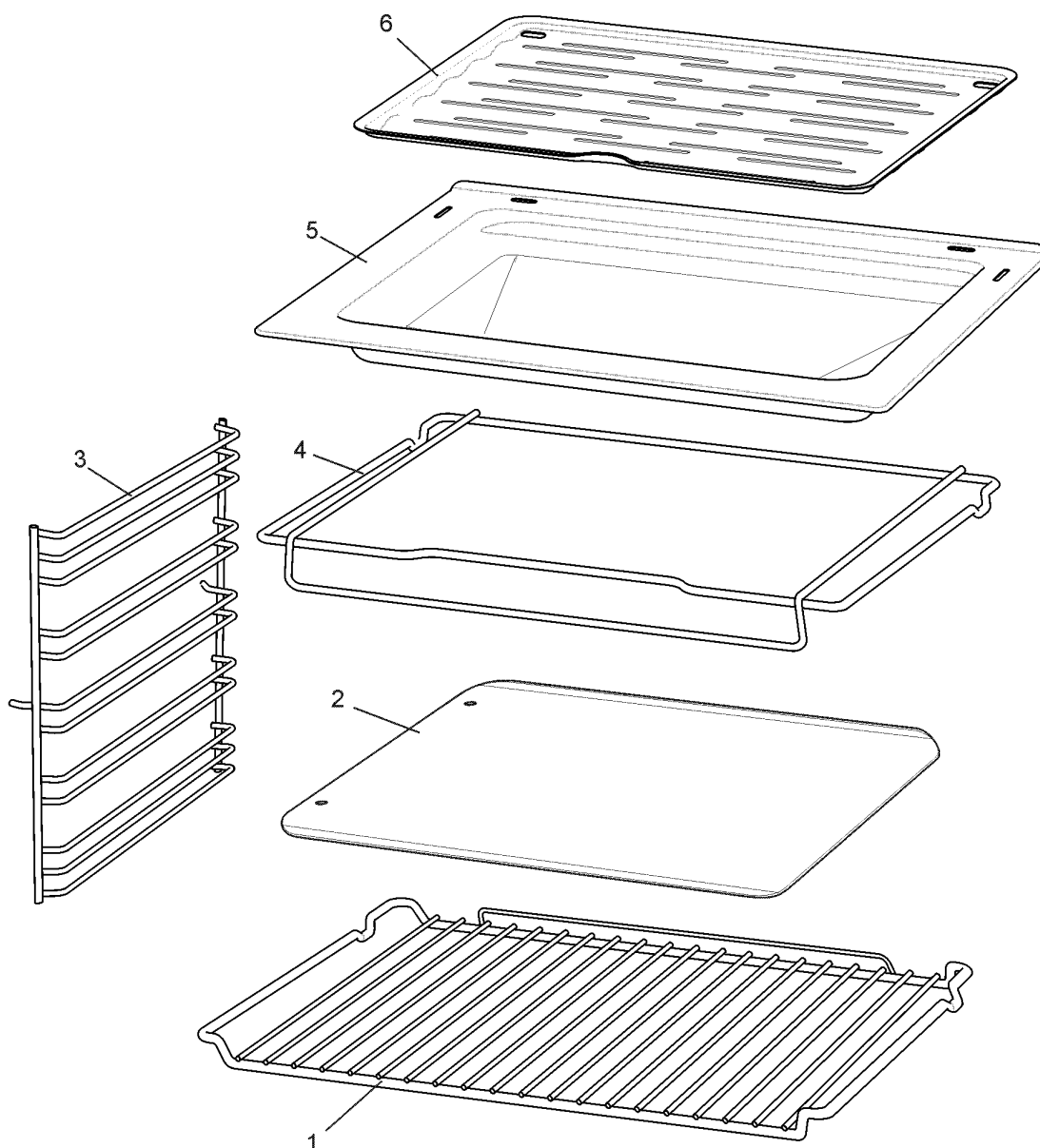
**MODELS: 4U600W\*04  
4U602W\*04**

**4U601W\*04**

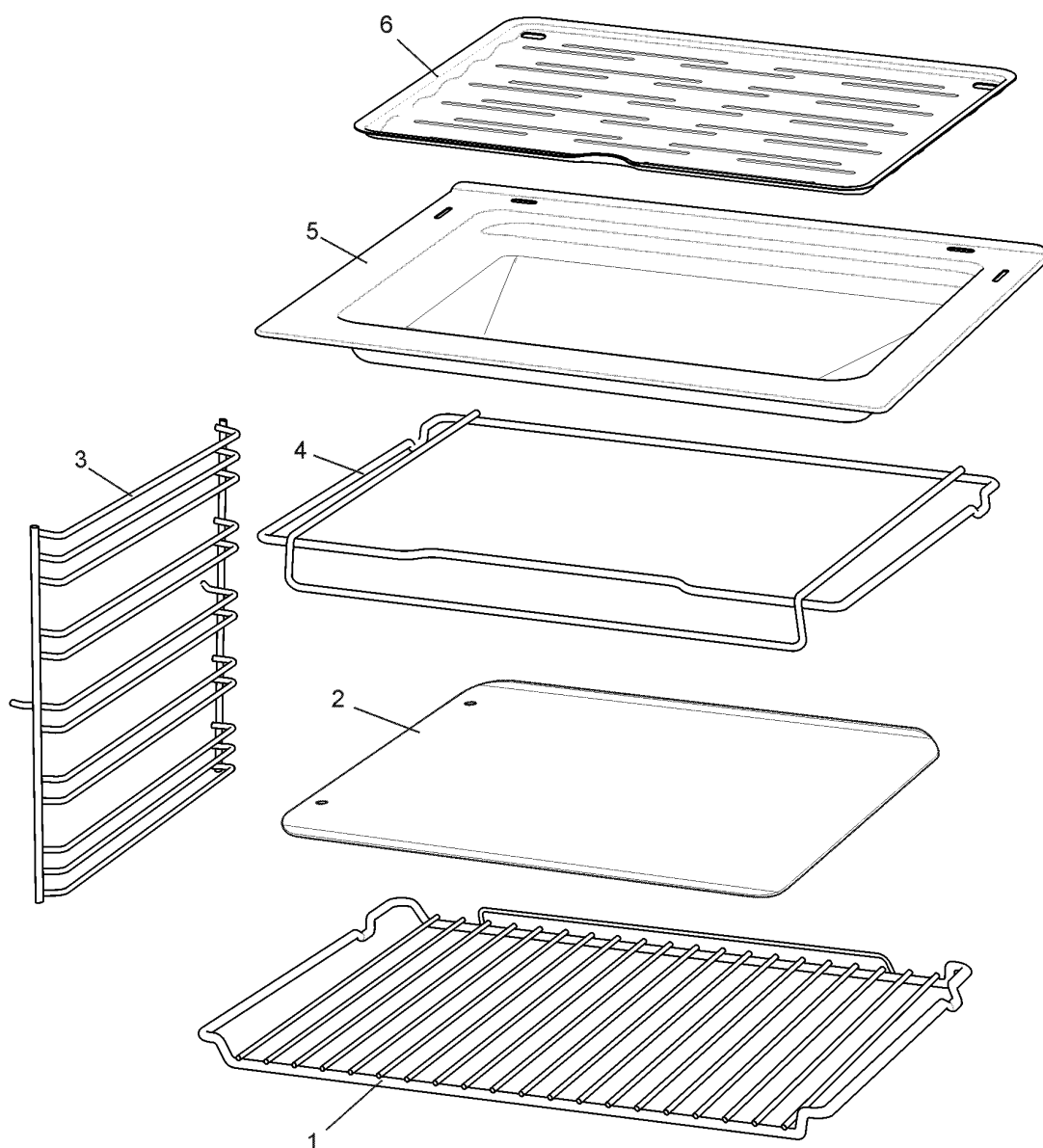
**EX. VIEW DRAWING 5381  
INTERNAL PACK  
ASSEMBLY**



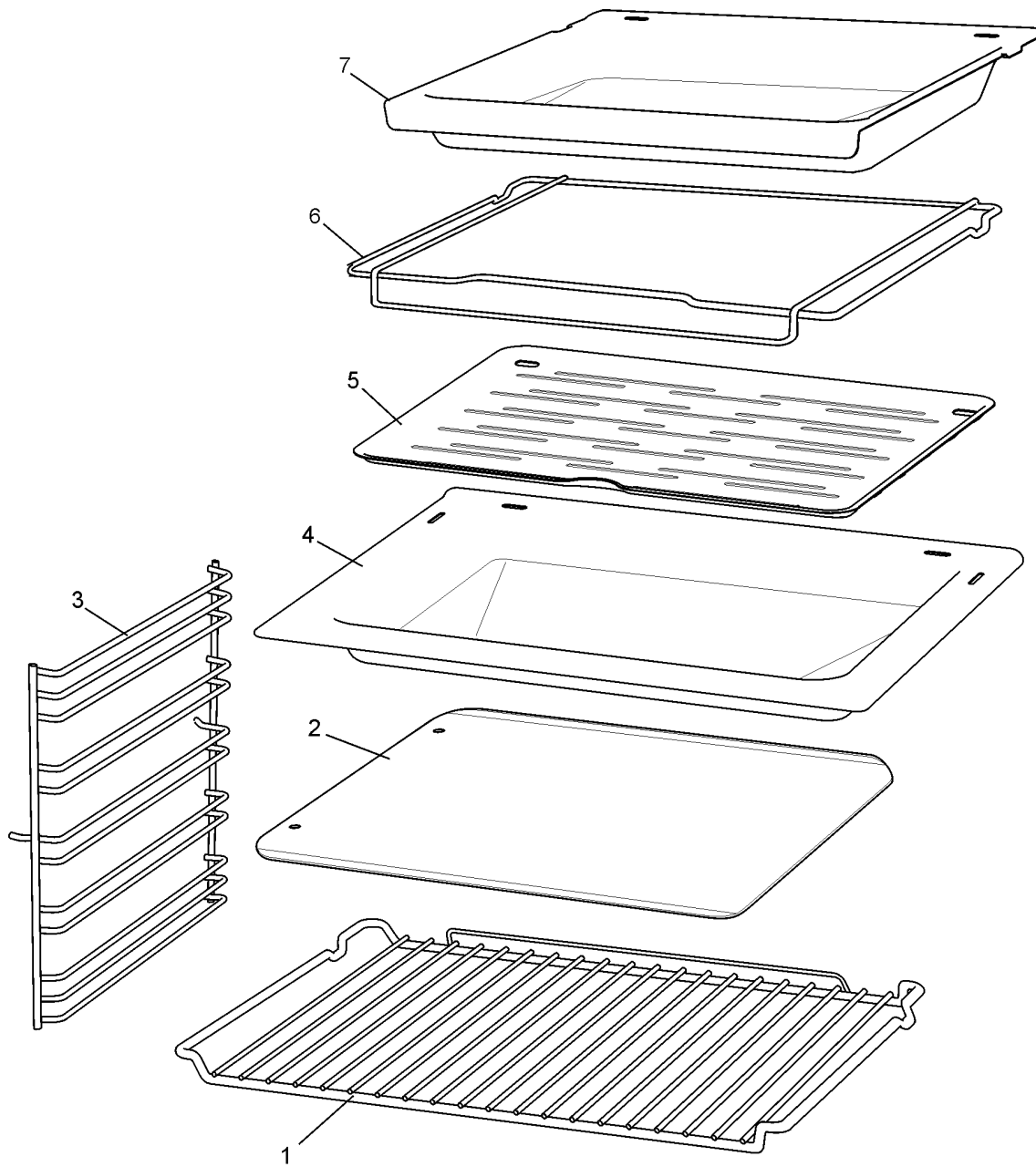
ITEM	PART N°	DESCRIPTION	Ex. 5381	QTY
1	<b>0327 001 195</b>	RACK SHELF OVEN BIOS		2
2	<b>0037 004 044</b>	TRAY SCONE NZ600 ENAM BIOS		1
3	<b>0327 001 201</b>	RACK SIDE SUPPORT OVEN BIOS		2
4	<b>0327 001 203</b>	RACK FRAME G/DISH WIRE BIOS		1
5	<b>0036 001 105</b>	DISH BAKING ENAM BIOS		1
6	<b>0327 001 200</b>	RACK INSERT GRILL DISH BIOS		1



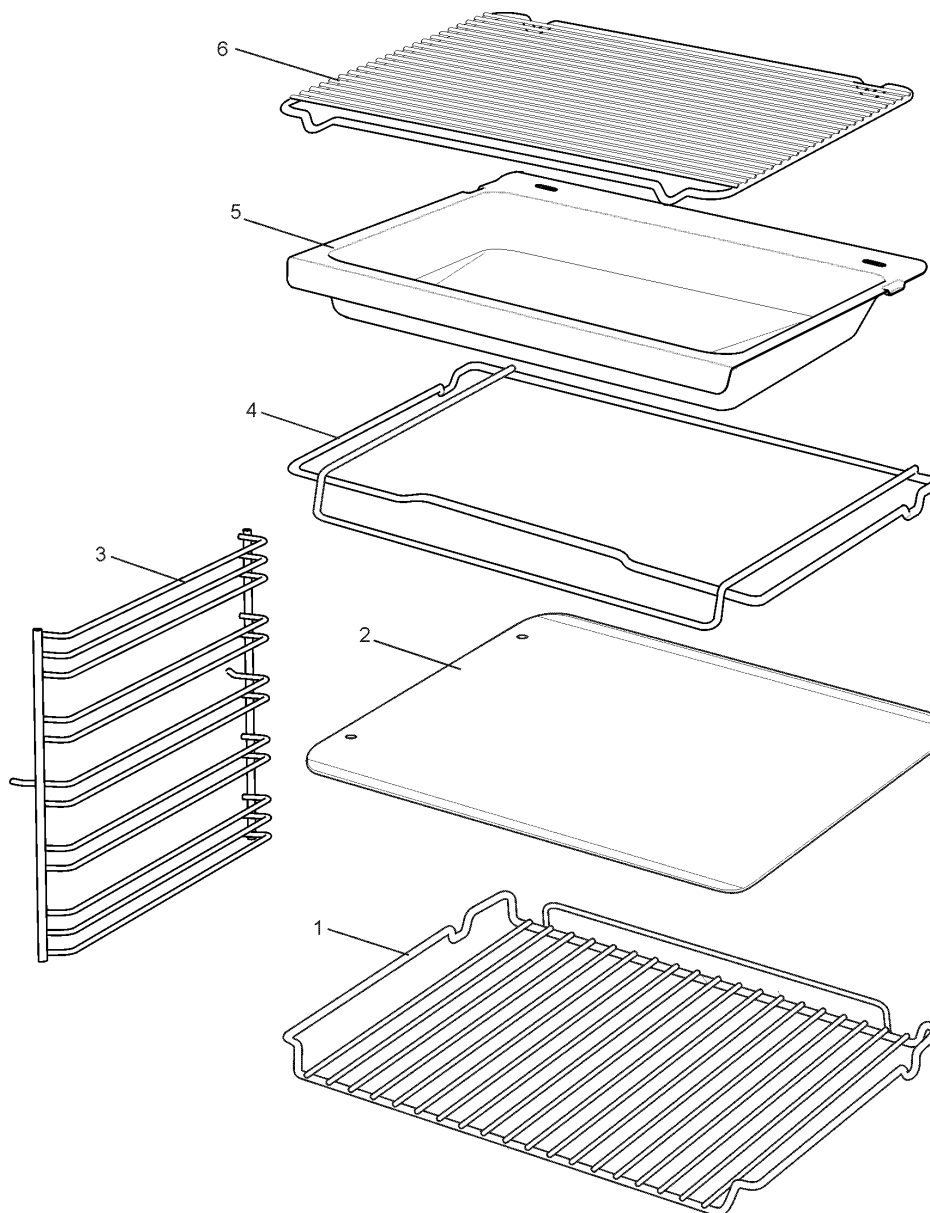
ITEM	PART N°	DESCRIPTION	Ex. 5390	QTY
1	<b>0327 001 195</b>	RACK SHELF OVEN BIOS		2
2	<b>0037 004 044</b>	TRAY SCONE NZ600 ENAM BIOS		2
3	<b>0327 001 201</b>	RACK SIDE SUPPORT OVEN BIOS		2
4	<b>0327 001 203</b>	RACK FRAME G/DISH WIRE BIOS		1
5	<b>0036 001 105</b>	DISH BAKING ENAM BIOS		1
6	<b>0028 025 393</b>	COVER GR DISH ENAM S/LESS BIOS		1



ITEM	PART N°	DESCRIPTION	Ex. 5390	QTY
1	<b>0327 001 195</b>	RACK SHELF OVEN BIOS		2
2	<b>0037 004 044</b>	TRAY SCONE NZ600 ENAM BIOS		2
3	<b>0327 001 201</b>	RACK SIDE SUPPORT OVEN BIOS		2
4	<b>0327 001 203</b>	RACK FRAME G/DISH WIRE BIOS		1
5	<b>0036 001 105</b>	DISH BAKING ENAM BIOS		1
6	<b>0028 025 393</b>	COVER GR DISH ENAM S/LESS BIOS		1
N.I.	<b>ACC019</b>	CLEANER CERAMIC COOKTOP 250ML		1
N.I.	<b>ACC014</b>	SCRAPER CERAMIC GLASS		1

**EX. VIEW DRAWING 5473  
INTERNAL PACK  
ASSEMBLY**

ITEM	PART N°	DESCRIPTION	Ex. 5473	QTY
1	<b>0327 001 195</b>	RACK SHELF OVEN BIOS		2
2	<b>0037 004 044</b>	TRAY SCONE NZ600 ENAM BIOS		2
3	<b>0327 001 201</b>	RACK SIDE SUPPORT OVEN BIOS		2
4	<b>0036 001 108</b>	DISH GRILL ENAM SGUB BIOS		1
5	<b>0028 025 393</b>	COVER GR DISH ENAM S/LESS BIOS		1
6	<b>0327 001 203</b>	RACK FRAME GR/DISH WIRE BIOS		1
7	<b>0036 001 105</b>	DISH BAKING ENAM BIOS		1
N.I.	<b>ACC019</b>	CLEANER CERAMIC COOKTOP 250ML		1
N.I.	<b>ACC014</b>	SCRAPER CERAMIC GLASS		1

**EX. VIEW DRAWING 5381  
INTERNAL PACK  
ASSEMBLY**

ITEM	PART N°	DESCRIPTION	Ex. 5381	QTY
1	<b>0327 001 195</b>	RACK SHELF OVEN BIOS		2
2	<b>0037 004 044</b>	TRAY SCONE NZ600 ENAM BIOS		1
3	<b>0327 001 201</b>	RACK SIDE SUPPORT OVEN BIOS		2
4	<b>0327 001 203</b>	RACK FRAME G/DISH WIRE BIOS		1
5	<b>0036 001 105</b>	DISH BAKING ENAM BIOS		1
6	<b>0327 001 200</b>	RACK INSERT GRILL DISH BIOS		1
N.I.	<b>ACC019</b>	CLEANER CERAMIC COOKTOP 250ML		1
N.I.	<b>ACC014</b>	SCRAPER CERAMIC GLASS		1

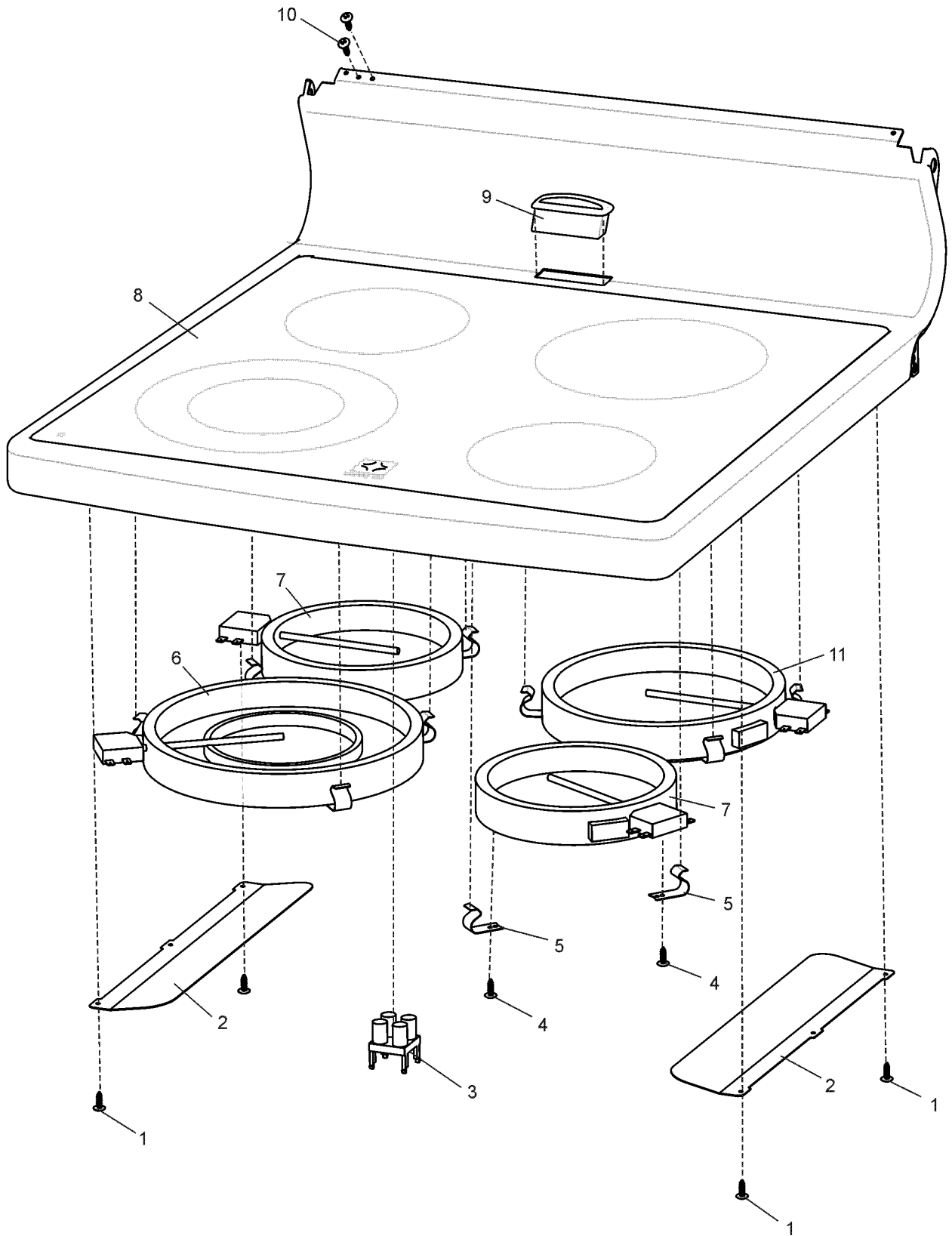


ITEM	PART N°	DESCRIPTION Ex. 5393	QTY
1	<b>0256 001 129</b>	CONNECTOR BLK AMP 770500-1	4
2	<b>0708 001 070</b>	RIVET POP STST4-2 BLACK	4
3	<b>0121 001 004</b>	GUARD RADIANT ELEMENT NZ	4
4	<b>NZ75404</b>	CLIP AMP 1217108-1	4
5	<b>0702 007 056</b>	SCREW #8 X 1/2 PAN #2 PH TC BK	8
6	<b>0030 024 203</b>	BRKT WIRING MOUNTING	2
7	<b>NZ75350</b>	HOB S/B ENAM RAD 600UP	1
8	<b>0007 009 280</b>	CAP VENT PAINTED 600UP	1
9	<b>0701 002 134</b>	SCREW #10 X 3/8 PAN ZC	2
10	<b>NZ75379</b>	BOWL SPILL ENAM 200 DIA NZ	2
11	<b>NZ75378</b>	BOWL SPILL ENAM 160 DIA NZ	2
12	<b>0122 004 547</b>	ELEMENT RAD ZOPPAS 8'	2
13	<b>0122 004 546</b>	ELEMENT RAD ZOPPAS 6'	2
N.I.	<b>0126 010 070</b>	SLEEVE SILICONE 10/8 50MM LONG	5
N.I.	<b>0712 003 037</b>	CABLE TIE 4' PLT1M-M30	4

MODELS: 4U605W\*04  
4U608W\*04

4U606W\*04  
4U609W\*04

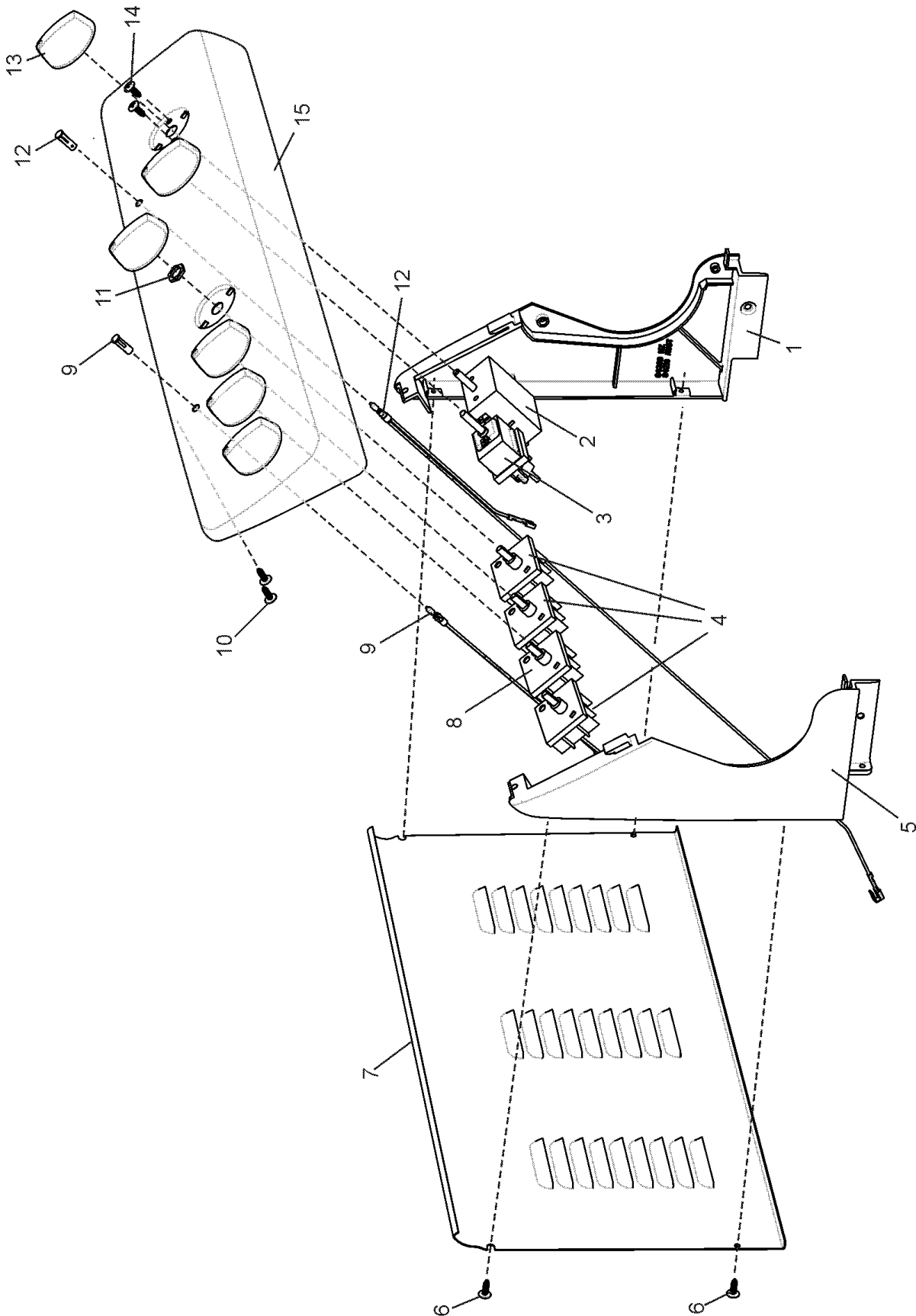
EX. VIEW DRAWING 5392  
HOB ASSEMBLY





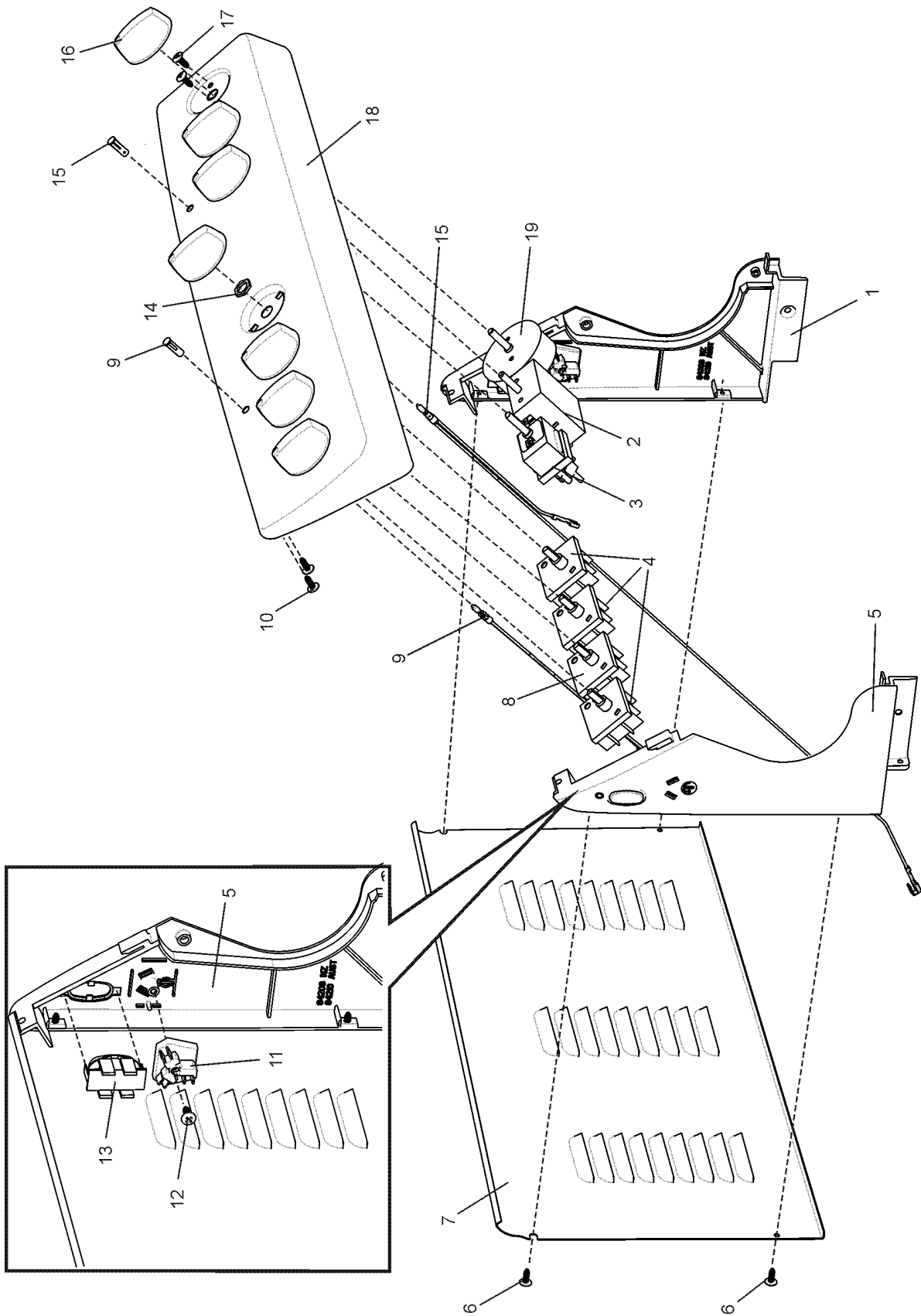
ITEM	PART N°	DESCRIPTION	Ex. 5392	QTY
1	<b>0702 007 056</b>	SCREW #8 X 1/2 PAN #2PH TC BK		4
2	<b>0030 024 218</b>	BRACKET GUARD WIRE CER 600UP		2
3	<b>NZ75371</b>	HOTLITE: 3 SER CER HOB		1
4	<b>0701 002 113</b>	SCREW #6 X 9.5 PAN PHIL ZC		12
5	<b>NZ75361</b>	CLIP SPRING 600 CERAM ELEMENT		12
6	<b>389 0704 02</b>	ELEM CER 230 D 2200/750W (S/L)		1
7	<b>389 0700 02</b>	ELEM CERAM 165 DIA 1200W (S/L)		2
8	<b>0602 002 729</b>	HOB S/BACK & GLASS CERAM 600UP		1
9	<b>0007 009 280</b>	CAP VENT PAINTED 600UP		1
10	<b>0701 002 134</b>	SCREW #10 X 3/8 PAN ZC		2
11	<b>389 0701 02</b>	ELEM CERAM 200 DIA 1800W (S/L)		1

EX. VIEW DRAWING 5401  
CONTROL PANEL  
ASSEMBLY



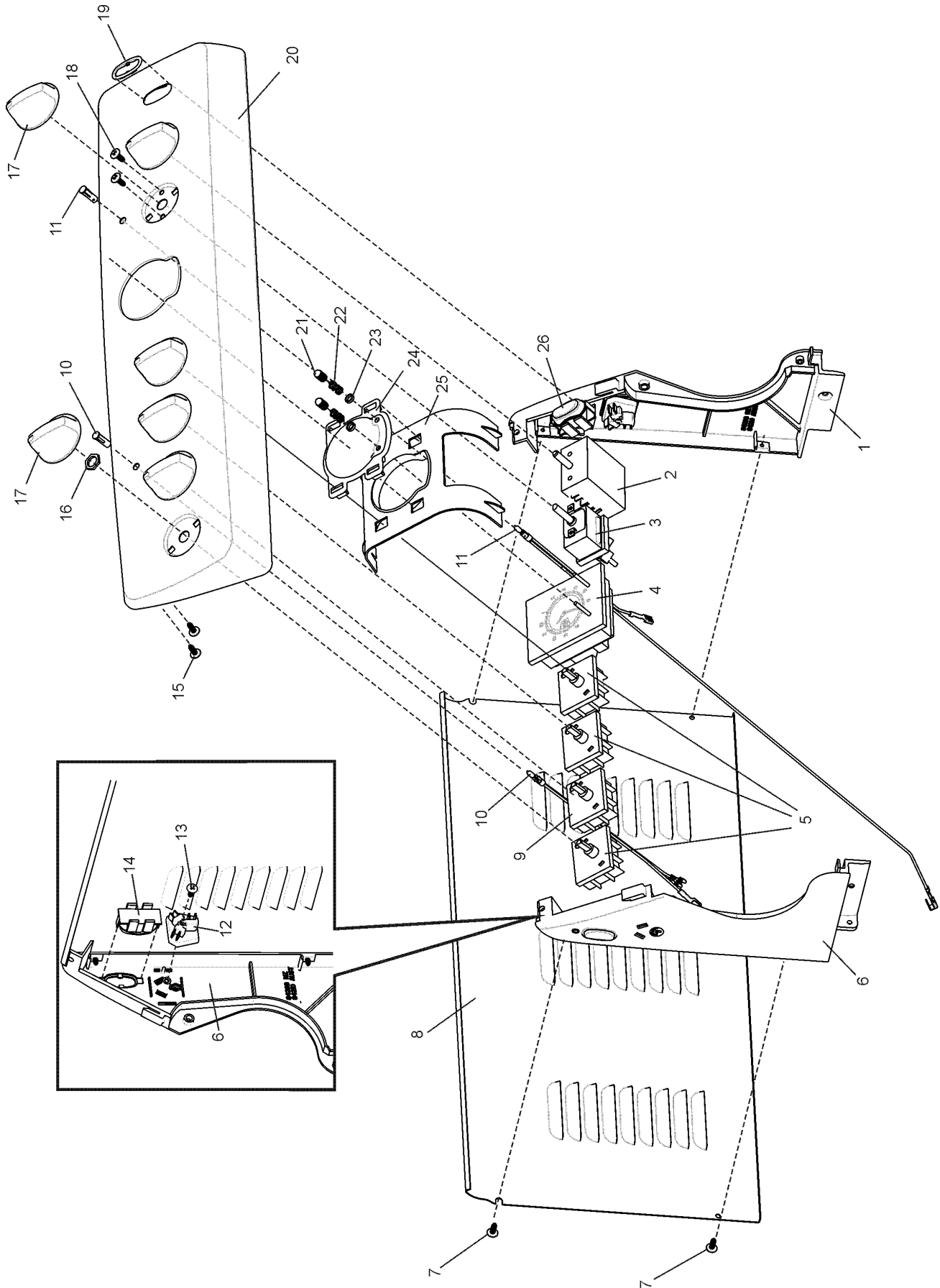
ITEM	PART N°	DESCRIPTION	Ex. 5401	QTY
1	<b>0160 003 598</b>	ENDCAP SW PNL RH AUS		1
2	<b>0534 001 742</b>	SWITCH MULTI 3		1
3	<b>0541 001 931</b>	THERMOSTAT OVEN - EGO		1
4	<b>0534 001 654</b>	SWITCH INF/HEAT MP-101-EA OC98		3
5	<b>0160 003 597</b>	ENDCAP SW PNL LH AUS		1
6	<b>0701 009 033</b>	SCREW #8 X 8MM HEX/MULTI		6
7	<b>0038 008 105</b>	PANEL S/B WIRE COVER WHT 600UP		1
8	<b>0534 001 655</b>	SWITCH INF/HEAT ISOLATED PILOT		1
9	<b>0609 100 269</b>	LIGHT INDICATOR		1
10	<b>0701 002 134</b>	SCREW #10 X 3/8 PAN ZC		2
11	<b>0065 009 209</b>	NUT METRIC M10 X 0.75		4
12	<b>0609 100 260</b>	LIGHT INDICAT NEON 240V 600MM		1
13	<b>0019 008 086</b>	KNOB WHITE 600 UPRIGHT		6
14	<b>0150 005 259</b>	SCREW M4 X 5 PAN #2PH SMALL HD		4
15	<b>0038 011 998</b>	PNL CNT SCR 4U600W		1
N.I.	<b>0712 003 037</b>	CABLE TIE 4' PLT1M-M30		1

EX. VIEW DRAWING 5407  
CONTROL PANEL  
ASSEMBLY



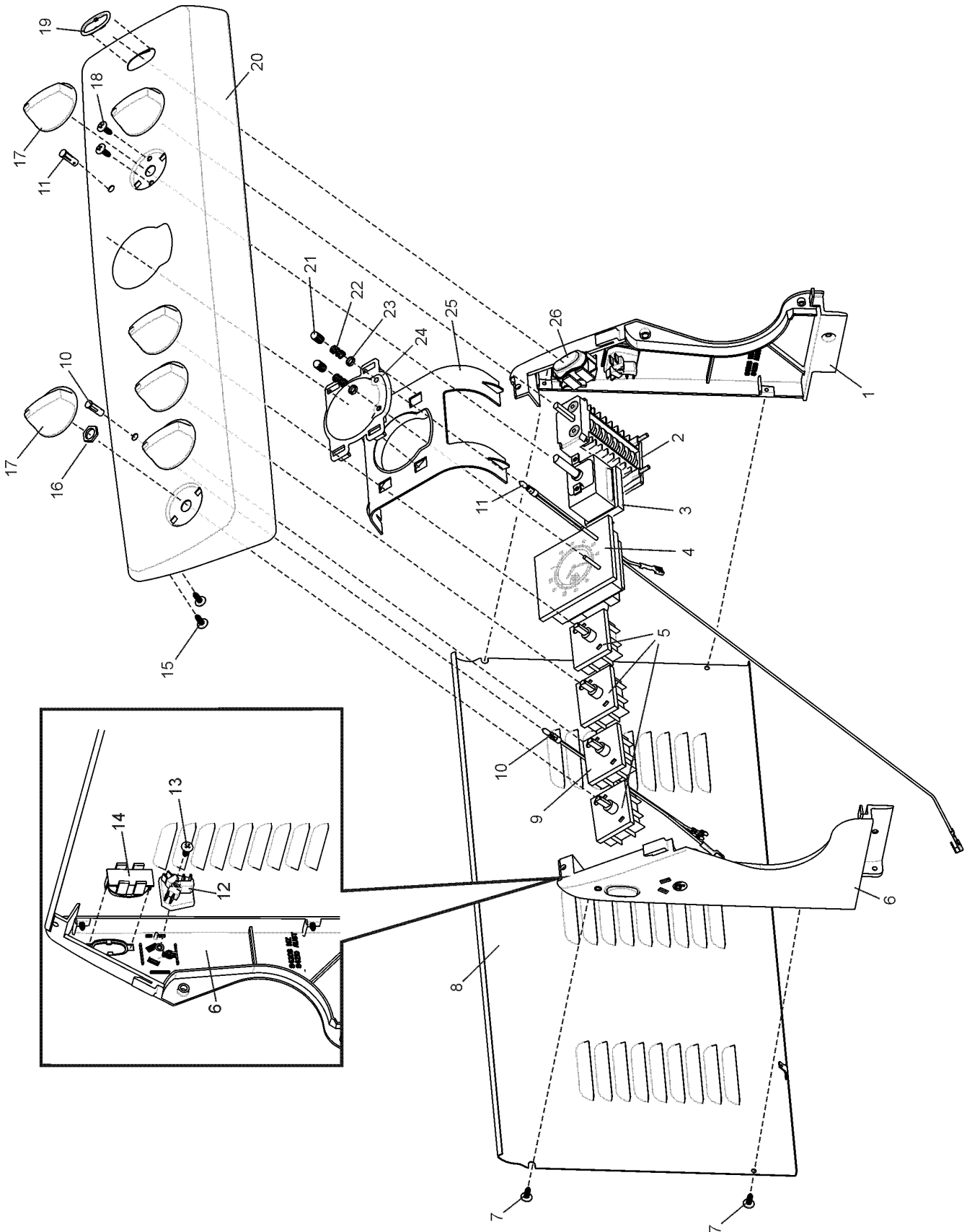
ITEM	PART N°	DESCRIPTION	Ex. 5407	QTY
1	<b>0160 003 596</b>	ENDCAP SW PNL RH NZ		1
2	<b>0534 001 742</b>	SWITCH MULTI 3		1
3	<b>0541 001 931</b>	THERMOSTAT OVEN - EGO		1
4	<b>0534 001 654</b>	SWITCH INF/HEAT MP-101-EA OC98		3
5	<b>0160 003 595</b>	ENDCAP SW PNL LH NZ		1
6	<b>0701 009 033</b>	SCREW #8 x 8MM HEX/MULTI		6
7	<b>0038 008 105</b>	PANEL S/B WIRE COVER WHT 600UP		1
8	<b>0534 001 655</b>	SWITCH INF/HEAT ISOLATED PILOT		1
9	<b>0609 100 269</b>	LIGHT INDICATOR		1
10	<b>0701 002 134</b>	SCREW #10 X 3/8 PAN ZC		2
11	<b>0066 001 004</b>	SOCKET 3 PIN N/Z		2
12	<b>0701 013 010</b>	SCREW #6-19X12 PAN WASH HI-LO		2
13	<b>NZ84212</b>	SWITCH ROCKER D11H22909D		2
14	<b>0065 009 209</b>	NUT METRIC M10 X 0.75		4
15	<b>0609 100 260</b>	LIGHT INDICAT NEON 240V 600MM		1
16	<b>0019 008 086</b>	KNOB WHITE 600 UPRIGHT		7
17	<b>0150 005 259</b>	SCREW M4 X 5 PAN #2PH SMALL HD		6
18	<b>0038 011 587</b>	PNL CNT SCR 4U601W		1
19	<b>0574 001 257</b>	TIMER 60MIN 360 ACTION PEAPSA		1
N.I.	<b>0712 003 037</b>	CABLE TIE 4' PLT1M-M30		1

EX. VIEW DRAWING 5408  
CONTROL PANEL  
ASSEMBLY



ITEM	PART N°	DESCRIPTION	Ex. 5408	QTY
1	<b>0160 003 596</b>	ENDCAP SW PNL RH NZ		1
2	<b>0534 001 742</b>	SWITCH MULTI 3		1
3	<b>0541 001 931</b>	THERMOSTAT OVEN - EGO		1
4	<b>0630 001 083</b>	CLOCK ANALOGUE PCA-EM-542		1
5	<b>0534 001 654</b>	SWITCH INF/HEAT MP-101-EA OC98		3
6	<b>0160 003 595</b>	ENDCAP SW PNL LH NZ		1
7	<b>0701 009 033</b>	SCREW 3# X 8MM HEX/MULTI		6
8	<b>0038 008 105</b>	PANEL S/B WIRE COVER WHT 600UP		1
9	<b>0534 001 655</b>	SWITCH INF/HEAT ISOLATED PILOT		1
10	<b>0609 100 269</b>	LIGHT INDICATOR		1
11	<b>0609 100 260</b>	LIGHT INDICAT NEON 240V 600MM		1
12	<b>0066 001 004</b>	SOCKET 3 PIN N/Z		2
13	<b>0701 013 010</b>	SCREW #6-19X12 PAN WASH HI-LO		2
14	<b>NZ84212</b>	SWITCH ROCKER D11H22909D		2
15	<b>0701 002 134</b>	SCREW #10 X 3/8 PAN ZC		2
16	<b>0065 009 209</b>	NUT METRIC M10 X 0.75		4
17	<b>0019 008 086</b>	KNOB WHITE 600 UPRIGHT		6
18	<b>0150 005 259</b>	SCREW M4 X 5 PAN #2PH SMALL HD		4
19	<b>NZ84289</b>	TRIM SWITCH BEZEL NZ		1
20	<b>0038 011 579</b>	PNL CNT SCR 4U602W		1
21	<b>0019 008 094</b>	KNOB CLOCK ANALOGUE BIOS		2
22	<b>0120 009 321</b>	SPRING CLOCK ANALOGUE		2
23	<b>0148 006 083</b>	COLLAR CLOCK ANALOGUE		2
24	<b>0600 001 062</b>	LENS CLOCK ANALOGUE 600UP		1
25	<b>0030 024 200</b>	BRACKET ANALOG CLOCK MTG, NZ		1
26	<b>NZ84213</b>	SWITCH ROCKER D11B22429D		1
N.I.	<b>0712 003 037</b>	CABLE TIE 4' PLT1M-M30		1

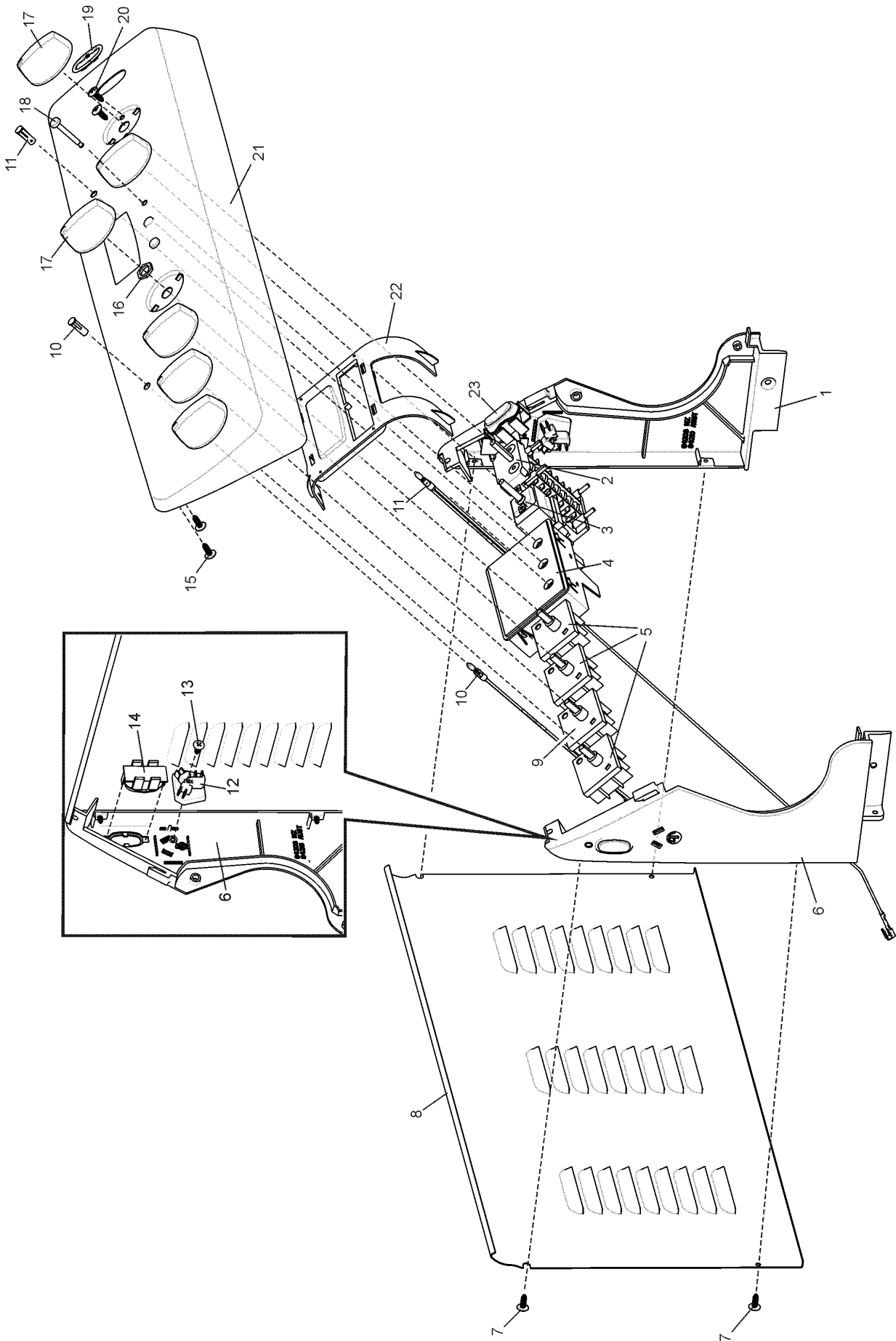
EX. VIEW DRAWING 5414  
CONTROL PANEL  
ASSEMBLY





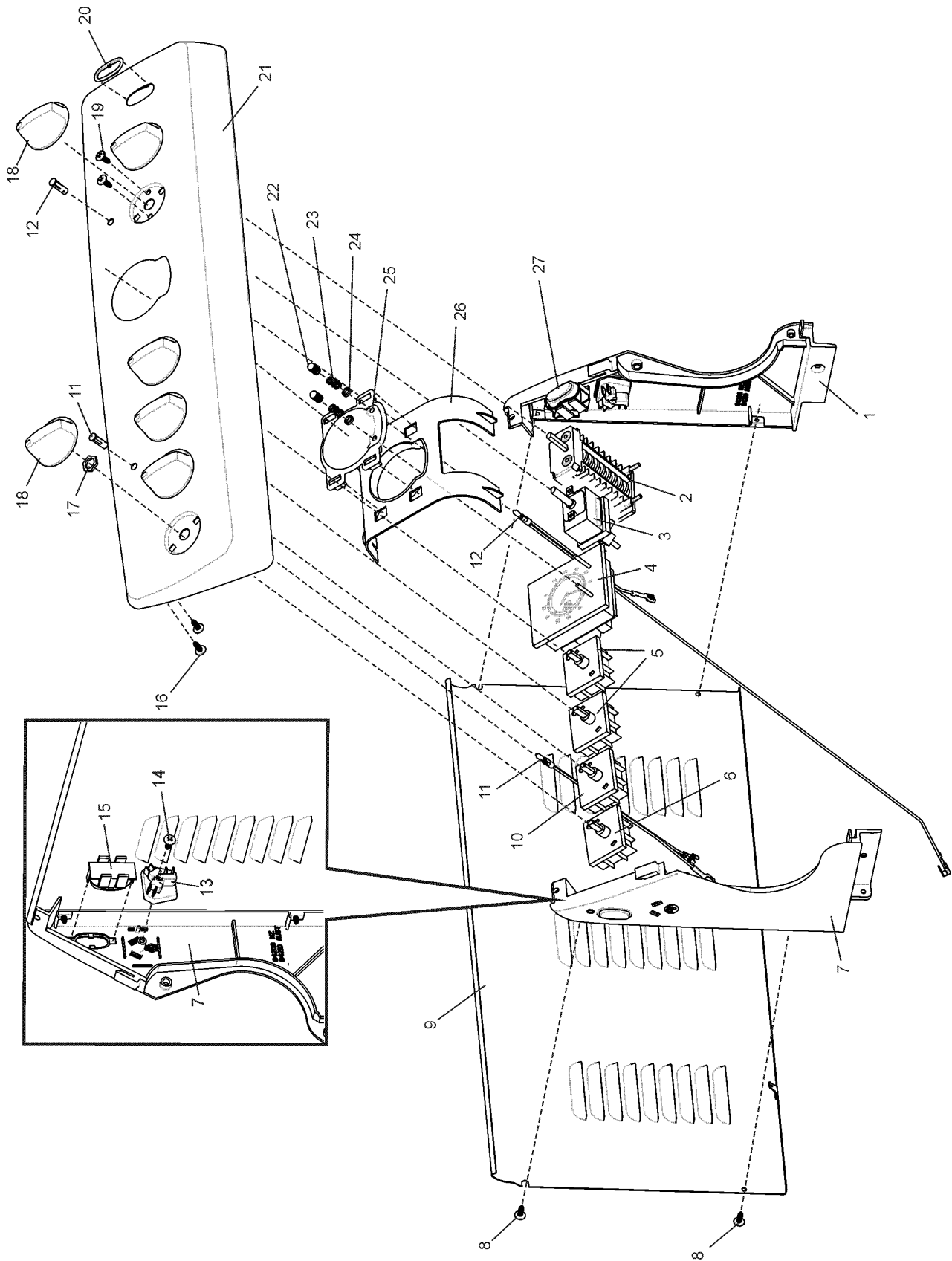
ITEM	PART N°	DESCRIPTION	Ex. 5414	QTY
1	<b>0160 003 596</b>	ENDCAP SW PNL RH NZ		1
2	<b>0534 001 738</b>	SWITCH MULTI 5		1
3	<b>0541 001 931</b>	THERMOSTAT OVEN - EGO		1
4	<b>0630 001 083</b>	CLOCK ANALOGUE PCA-EM-542		1
5	<b>0534 001 654</b>	SWITCH INF/HEAT MP-101-EA OC98		3
6	<b>0160 003 595</b>	ENDCAP SW PNL LH NZ		1
7	<b>0701 009 033</b>	SCREW #8 X 8MM HEX/MULTI		4
8	<b>0038 008 105</b>	PANEL S/B WIRE COVER WHT 600UP		1
9	<b>0534 001 655</b>	SWITCH INF/HEAT ISOLATED PILOT		1
10	<b>0609 100 269</b>	LIGHT INDICATOR		1
11	<b>0609 100 260</b>	LIGHT INDICAT NEON 240V 600MM		1
12	<b>0066 001 004</b>	SOCKET 3 PIN N/Z		2
13	<b>0701 013 010</b>	SCREW #6-19X12 PAN WASH HI-LO		2
14	<b>NZ84212</b>	SWITCH ROCKER D11H22909D		2
15	<b>0701 002 134</b>	SCREW #10 X 3/8 PAN ZC		2
16	<b>0065 009 209</b>	NUT METRIC M10 X 0.75		4
17	<b>0019 008 086</b>	KNOB WHITE 600 UPRIGHT		6
18	<b>0150 005 259</b>	SCREW M4 X 5 PAN #2PH SMALL HD		4
19	<b>NZ84289</b>	TRIM SWITCH BEZEL NZ		1
20	<b>0038 011 614</b>	PNL CNT SCR 4U603W		1
21	<b>0019 008 094</b>	KNOB CLOCK ANALOGUE BIOS		2
22	<b>0120 009 321</b>	SPRING CLOCK ANALOGUE		2
23	<b>0148 006 083</b>	COLLAR CLOCK ANALOGUE		2
24	<b>0600 001 062</b>	LENS CLOCK ANALOGUE 600UP		1
25	<b>0030 024 200</b>	BRACKET ANALOG CLOCK MTG, NZ		1
26	<b>NZ84213</b>	SWITCH ROCKER D11B22429D		1
N.I.	<b>0712 003 037</b>	CABLE TIE 4' PLT1M-M30		1

EX. VIEW DRAWING 5417  
CONTROL PANEL  
ASSEMBLY



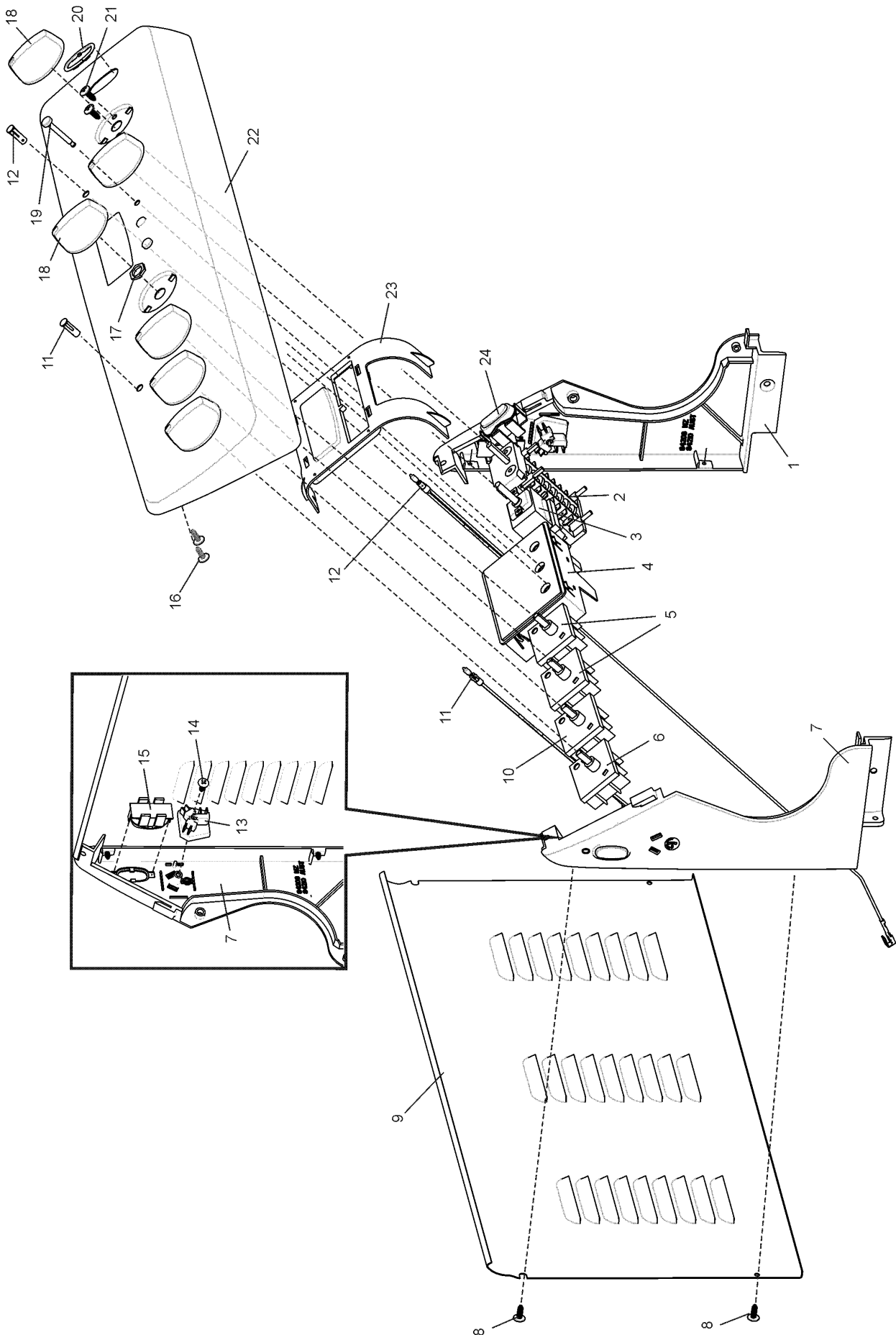
ITEM	PART N°	DESCRIPTION	Ex. 5417	QTY
1	<b>0160 003 596</b>	ENDCAP SW PNL RH NZ		1
2	<b>0534 001 739</b>	SWITCH MULTI 8		1
3	<b>0541 001 931</b>	THERMOSTAT OVEN - EGO		1
4	<b>330 6646 00</b>	CLOCK 3 BTN EASYTIME 3 W/RELAY		1
5	<b>0534 001 654</b>	SWITCH INF/HEAT MP-101-EA OC98		3
6	<b>0160 003 595</b>	ENDCAP SW PNL LH NZ		1
7	<b>0701 009 033</b>	SCREW #8 X 8MM HEX/MULTI		6
8	<b>0038 008 105</b>	PANEL S/B WIRE COVER WHT 600UP		1
9	<b>0534 001 655</b>	SWITCH INF/HEAT ISOLATED PILOT		1
10	<b>0609 100 269</b>	LIGHT INDICATOR		1
11	<b>0609 100 260</b>	LIGHT INDICAT NEON 240V 600MM		1
12	<b>0066 001 004</b>	SOCKET 3 PIN N/Z		2
13	<b>0701 013 010</b>	SCREW #6-19X12 PAN WASH HI-LO		2
14	<b>NZ84212</b>	SWITCH ROCKER D11H22909D		2
15	<b>0701 002 134</b>	SCREW #10 X 3/8 PAN ZC		2
16	<b>0065 009 209</b>	NUT METRIC M10 X 0.75		4
17	<b>0019 008 086</b>	KNOB WHITE 600 UPRIGHT		6
18	<b>0574 001 261</b>	BUTTON CLOCK DIGITAL 600UP		3
19	<b>NZ84289</b>	TRIM SWITCH BEZEL NZ		1
20	<b>0150 005 259</b>	SCREW M4 X 5 PAN #2PH SMALL HD		4
21	<b>0038 011 592</b>	PNL CNT SCR 4U604W		1
22	<b>0600 001 063</b>	LENS CLOCK DIGITAL 600UP		1
23	<b>NZ84213</b>	SWITCH ROCKER D11B22429D		1

EX. VIEW DRAWING 5418  
CONTROL PANEL  
ASSEMBLY



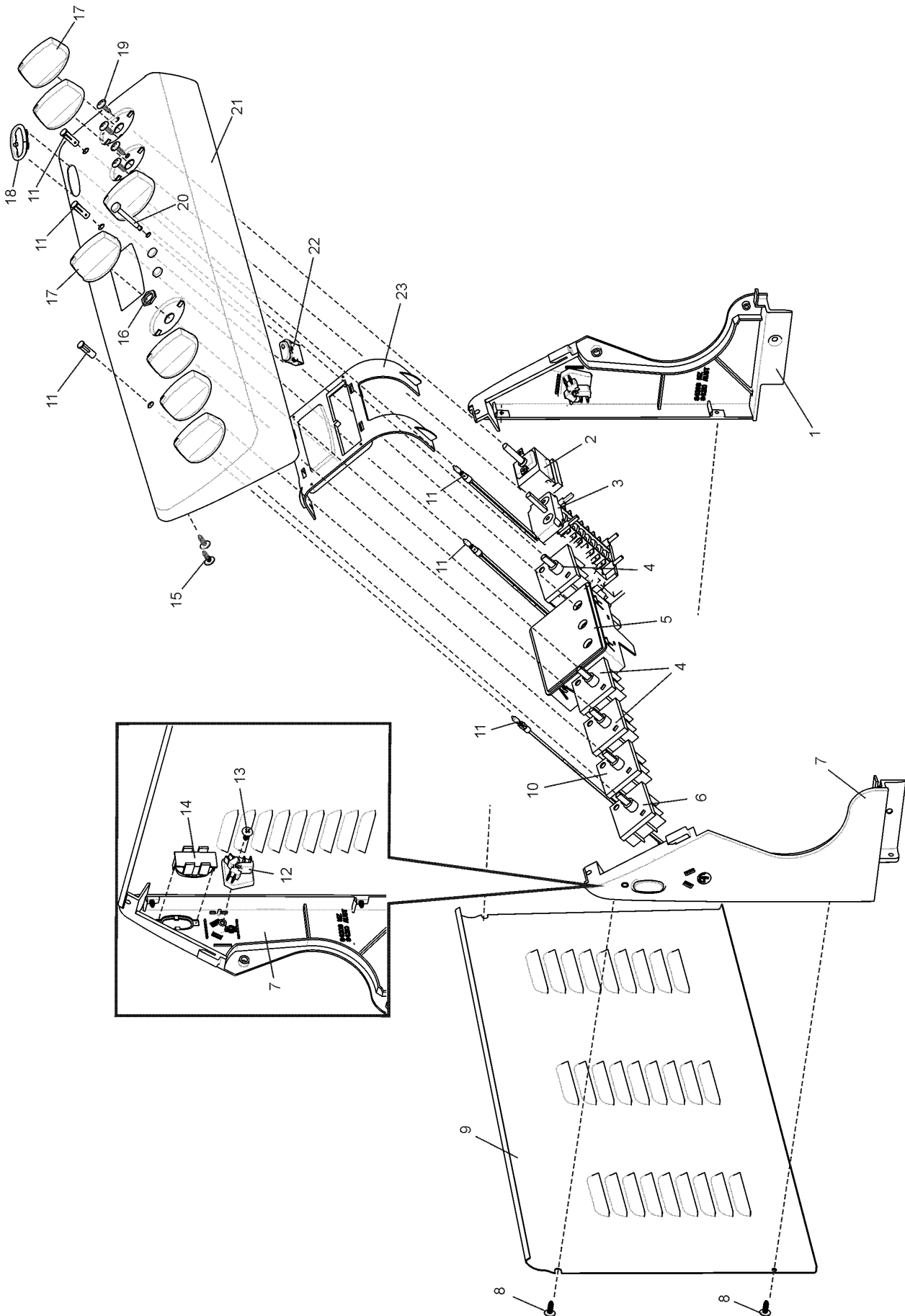
ITEM	PART N°	DESCRIPTION	Ex. 5418	QTY
1	<b>0160 003 596</b>	ENDCAP SW PNL RH NZ		1
2	<b>0534 001 738</b>	SWITCH MULTI 5		1
3	<b>0541 001 931</b>	THERMOSTAT OVEN - EGO		1
4	<b>0630 001 083</b>	CLOCK ANALOGUE PCA-EM-542		1
5	<b>0534 001 654</b>	SWITCH INF/HEAT MP-101-EA OC98		2
6	<b>0534 001 720</b>	SWITCH INF/HEAT MDP-110-EA		1
7	<b>0160 003 595</b>	ENDCAP SW PNL LH NZ		1
8	<b>0701 009 033</b>	SCREW #8 X 8MM HEX/MULTI		6
9	<b>0038 008 105</b>	PANEL S/B WIRE COVER WHT 600UP		1
10	<b>0534 001 655</b>	SWITCH INF/HEAT ISOLATED PILOT		1
11	<b>0609 100 269</b>	LIGHT INDICATOR		1
12	<b>0609 100 260</b>	LIGHT INDICAT NEON 240V 600MM		1
13	<b>0066 001 004</b>	SOCKET 3 PIN N/Z		2
14	<b>0701 013 010</b>	SCREW #6-19X12 PAN WASH HI-LO		2
15	<b>NZ84212</b>	SWITCH ROCKER D11H22909D		2
16	<b>0701 002 134</b>	SCREW #10 X 3/8 PAN ZC		2
17	<b>0065 009 209</b>	NUT METRIC M10 X 0.75		4
18	<b>0019 008 086</b>	KNOB WHITE 600 UPRIGHT		6
19	<b>0150 005 259</b>	SCREW M4 X 5 PAN #2PH SMALL HD		4
20	<b>NZ84289</b>	TRIM SWITCH BEZEL NZ		1
21	<b>0038 011 616</b>	PNL CNT SCR 4U605W		1
22	<b>0019 008 094</b>	KNOB CLOCK ANALOGUE BIOS		2
23	<b>0120 009 321</b>	SPRING CLOCK ANALOGUE		2
24	<b>0148 006 083</b>	COLLAR CLOCK ANALOGUE		2
25	<b>0600 001 062</b>	LENS CLOCK ANALOGUE 600UP		1
26	<b>0030 024 200</b>	BRACKET ANALOG CLOCK MTG, NZ		1
27	<b>NZ84213</b>	SWITCH ROCKER D11B22429D		1

EX. VIEW DRAWING 5419  
CONTROL PANEL  
ASSEMBLY



ITEM	PART N°	DESCRIPTION	Ex. 5419	QTY
1	<b>0160 003 596</b>	ENDCAP SW PNL RH NZ		1
2	<b>0534 001 739</b>	SWITCH MULTI 8		1
3	<b>0541 001 931</b>	THERMOSTAT OVEN - EGO		1
4	<b>330 6646 00</b>	CLOCK 3 BTN EASYTIME 3 W/RELAY		1
5	<b>0534 001 654</b>	SWITCH INF/HEAT MP-101-EA OC98		2
6	<b>0534 001 720</b>	SWITCH INF/HEAT MDP-110-EA		1
7	<b>0160 003 595</b>	ENDCAP SW PNL LH NZ		1
8	<b>0701 009 033</b>	SCREW #8 X 8MM HEX/MULTI		6
9	<b>0038 008 105</b>	PANEL S/B WIRE COVER WHT 600UP		1
10	<b>0534 001 655</b>	SWITCH INF/HEAT ISOLATED PILOT		1
11	<b>0609 100 269</b>	LIGHT INDICATOR		1
12	<b>0609 100 260</b>	LIGHT INDICAT NEON 240V 600MM		1
13	<b>0066 001 004</b>	SOCKET 3 PIN N/Z		2
14	<b>0701 013 010</b>	SCREW #6-19X12 PAN WASH HI-LO		2
15	<b>NZ84212</b>	SWITCH ROCKER D11H22909D		2
16	<b>0701 002 134</b>	SCREW #10 X 3/8 PAN ZC		2
17	<b>0065 009 209</b>	NUT METRIC M10 X 0.75		4
18	<b>0019 008 086</b>	KNOB WHITE 600 UPRIGHT		6
19	<b>0574 001 261</b>	BUTTON CLOCK DIGITAL 600UP		3
20	<b>NZ84289</b>	TRIM SWITCH BEZEL NZ		1
21	<b>0150 005 259</b>	SCREW M4 X 5 PAN #2PH SMALL HD		4
22	<b>0038 011 618</b>	PNL CNT SCR 4U606W		1
23	<b>0600 001 063</b>	LENS CLOCK DIGITAL 600UP		1
24	<b>NZ84213</b>	SWITCH ROCKER D11B22429D		1

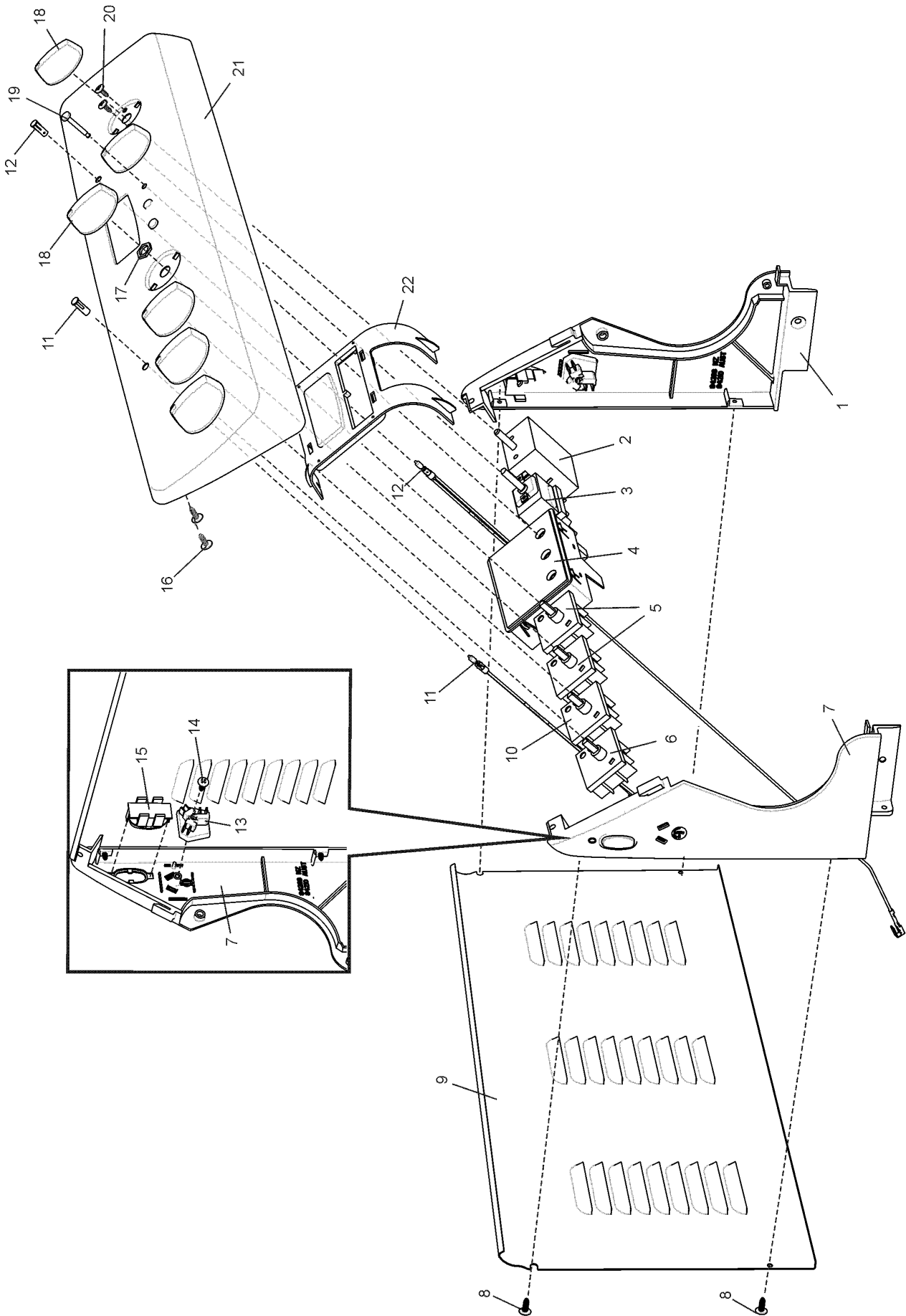
EX. VIEW DRAWING 5428  
CONTROL PANEL  
ASSEMBLY





ITEM	PART N°	DESCRIPTION	Ex. 5428	QTY
1	<b>0160 003 596</b>	ENDCAP SW PNL RH NZ		1
2	<b>0541 001 931</b>	THERMOSTAT OVEN - EGO		1
3	<b>0534 001 739</b>	SWITCH MULTI 8		1
4	<b>0534 001 654</b>	SWITCH INF/HEAT MP-101-EA OC98		3
5	<b>330 6646 00</b>	CLOCK 3 BTN EASYTIME 3 W/RELAY		1
6	<b>0534 001 720</b>	SWITCH INF/HEAT MDP-110-EA		1
7	<b>0160 003 595</b>	ENDCAP SW PNL LH NZ		1
8	<b>0701 009 033</b>	SCREW #8 X 8MM HEX/MULTI		6
9	<b>0038 008 105</b>	PANEL S/B WIRE COVER WHT 600UP		1
10	<b>0534 001 655</b>	SWITCH INF/HEAT ISOLATED PILOT		1
11	<b>0609 100 269</b>	LIGHT INDICATOR		3
12	<b>0066 001 004</b>	SOCKET 3 PIN N/Z		2
13	<b>0701 013 010</b>	SCREW #6-19X12 PAN WASH HI-LO		2
14	<b>NZ84212</b>	SWITCH ROCKER D11H22909D		2
15	<b>0701 002 134</b>	SCREW #10 X 3/8 PAN ZC		2
16	<b>0065 009 209</b>	NUT METRIC M10 X 0.75		5
17	<b>0019 008 086</b>	KNOB WHITE 600 UPRIGHT		7
18	<b>NZ84289</b>	TRIM SWITCH BEZEL NZ		1
19	<b>0150 005 259</b>	SCREW M4 X 5 PAN #2PH SMALL HD		4
20	<b>0574 001 261</b>	BUTTON CLOCK DIGITAL 600UP		3
21	<b>0038 011 597</b>	PNL CNT SCR 4U608W		1
22	<b>NZ84213</b>	SWITCH ROCKER D11B22429D		1
23	<b>0600 001 063</b>	LENS CLOCK DIGITAL 600UP		1

EX. VIEW DRAWING 5431  
CONTROL PANEL  
ASSEMBLY

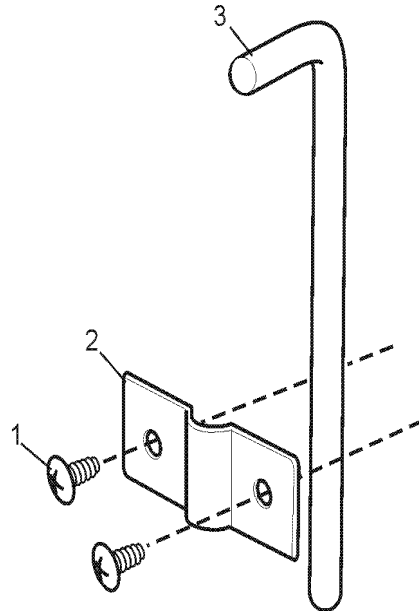


ITEM	PART N°	DESCRIPTION Ex. 5431	QTY
1	<b>0160 003 596</b>	ENDCAP SW PNL RH NZ	1
2	<b>0534 001 742</b>	SWITCH MULTI 3	1
3	<b>0541 001 931</b>	THERMOSTAT OVEN - EGO	1
4	<b>330 6646 00</b>	CLOCK 3 BTN EASYTIME 3 W/RELAY	1
5	<b>0534 001 654</b>	SWITCH INF/HEAT MP-101-EA OC98	2
6	<b>0534 001 720</b>	SWITCH INF/HEAT MDP-110-EA	1
7	<b>0160 003 595</b>	ENDCAP SW PNL LH NZ	1
8	<b>0701 009 033</b>	SCREW #8 X 8MM HEX/MULTI	6
9	<b>0038 008 105</b>	PANEL S/B WIRE COVER WHT 600UP	1
10	<b>0534 001 655</b>	SWITCH INF/HEAT ISOLATED PILOT	1
11	<b>0609 100 269</b>	LIGHT INDICATOR	1
12	<b>0609 100 260</b>	LIGHT INDICAT NEON 240V 600MM	1
13	<b>0066 001 004</b>	SOCKET 3 PIN N/Z	2
14	<b>0701 013 010</b>	SCREW #6-19X12 PAN WASH HI-LO	2
15	<b>NZ84212</b>	SWITCH ROCKER D11H22909D	2
16	<b>0701 002 134</b>	SCREW #10 X 3/8 PAN ZC	2
17	<b>0065 009 209</b>	NUT METRIC M10 X 0.75	4
18	<b>0019 008 086</b>	KNOB WHITE 600 UPRIGHT	6
19	<b>0574 001 261</b>	BUTTON CLOCK DIGITAL 600UP	3
20	<b>0150 005 259</b>	SCREW M4 X 5 PAN #2PH SMALL HD	4
21	<b>0038 011 602</b>	PNL CNT SCR 4U609W	1
22	<b>0600 001 063</b>	LENS CLOCK DIGITAL 600UP	1

**MODELS:** 4U600W\*04  
 4U602W\*04  
 4U604W\*04  
 4U606W\*04  
 4U609W\*04

4U601W\*04  
 4U603W\*04  
 4U605W\*04  
 4U608W\*04

**EX. VIEW DRAWING 5372  
 INSTALLATION BAG  
 ASSEMBLY**

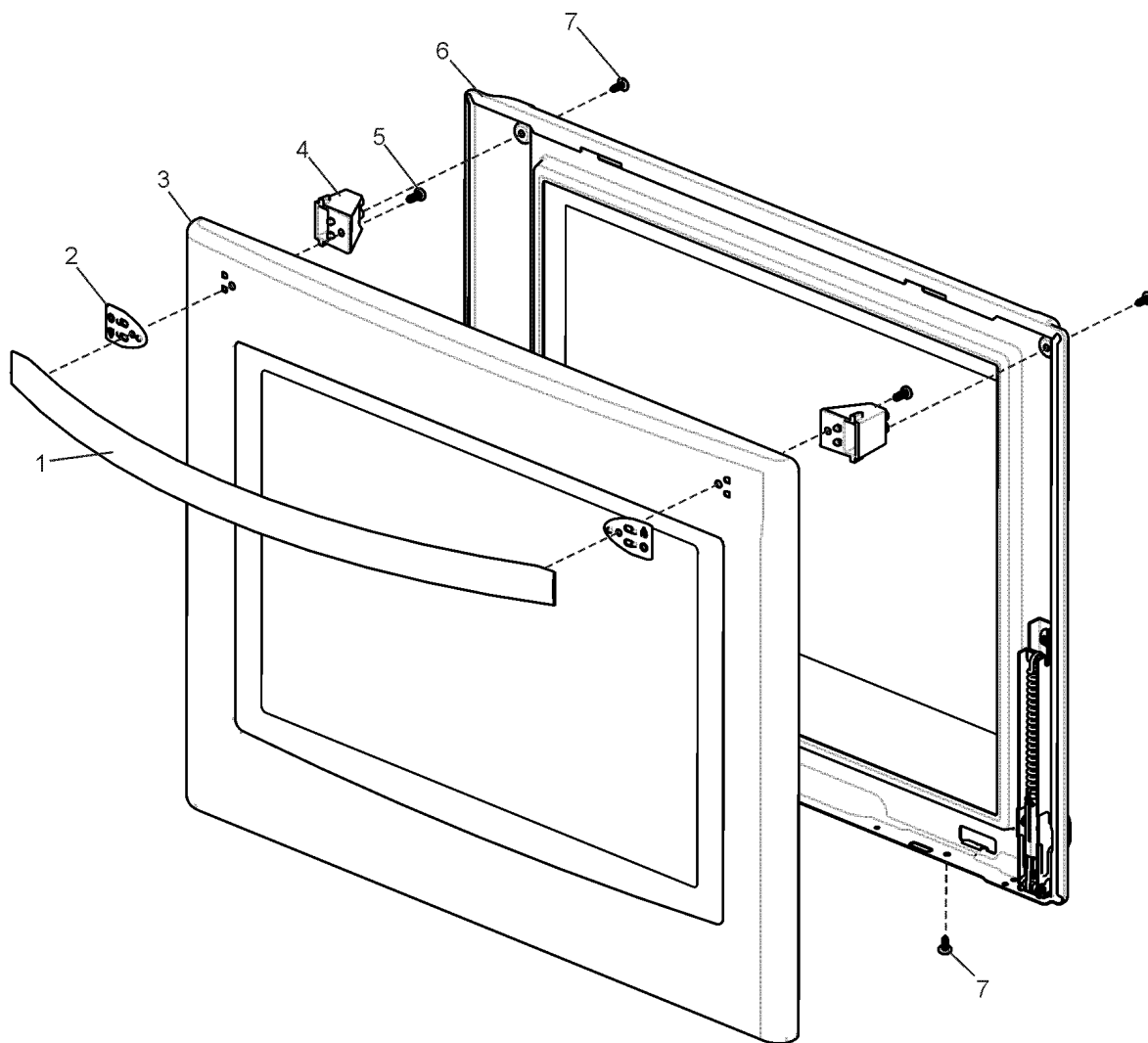


ITEM	PART N°	DESCRIPTION	Ex. 5372	QTY
1	<b>0701 009 031</b>	SCREW #8 X 9/16 B/HD S/PT BKOX		2
2	<b>0030 024 158</b>	BRACKET STABILITY BOLT 540		1
3	<b>0116 001 002</b>	BOLT STABILISING 540 UPRIGHTS		1
N.I.	<b>0564 001 383</b>	BAG CONTAINING BOLT & BRACKET (INCLUDES ALL THE ABOVE ITEMS)		1

**MODELS:** 4U600W\*04  
 4U602W\*04  
 4U604W\*04  
 4U606W\*04  
 4U609W\*04

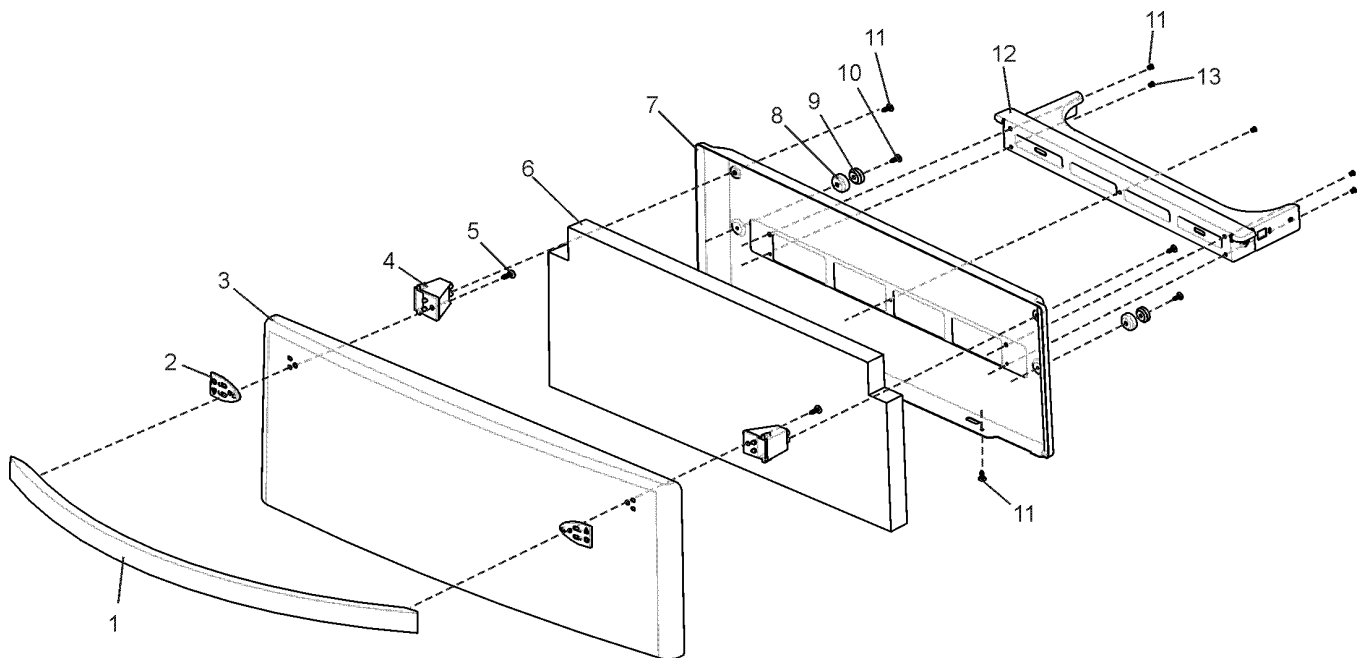
4U601W\*04  
 4U603W\*04  
 4U605W\*04  
 4U608W\*04

**EX. VIEW DRAWING 5400  
 OVEN DOOR  
 ASSEMBLY**



ITEM	PART N°	DESCRIPTION	Ex. 5400	QTY
1	<b>0050 010 749</b>	HANDLE BAR CURVED WHT 600UP		1
2	<b>0160 003 601</b>	ENDCAP HANDLE CURVED 600UP		2
3	<b>0038 002 662</b>	PANEL OUTER & GLASS 600UP		1
4	<b>0271 001 302</b>	SPACER HANDLE OVEN DOOR 600UP		2
5	<b>0702 004 009</b>	SCREW 3/16 X 12 PAN PH TRILOB GP		2
6	<b>0038 001 827</b>	PANEL IN OV DR ASSY 600UP		1
7	<b>0701 009 031</b>	SCREW #8 X 9/16 B/HD S/PT BKOX		4

**EX. VIEW DRAWING 5387**  
**GRILL DOOR**  
**ASSEMBLY**

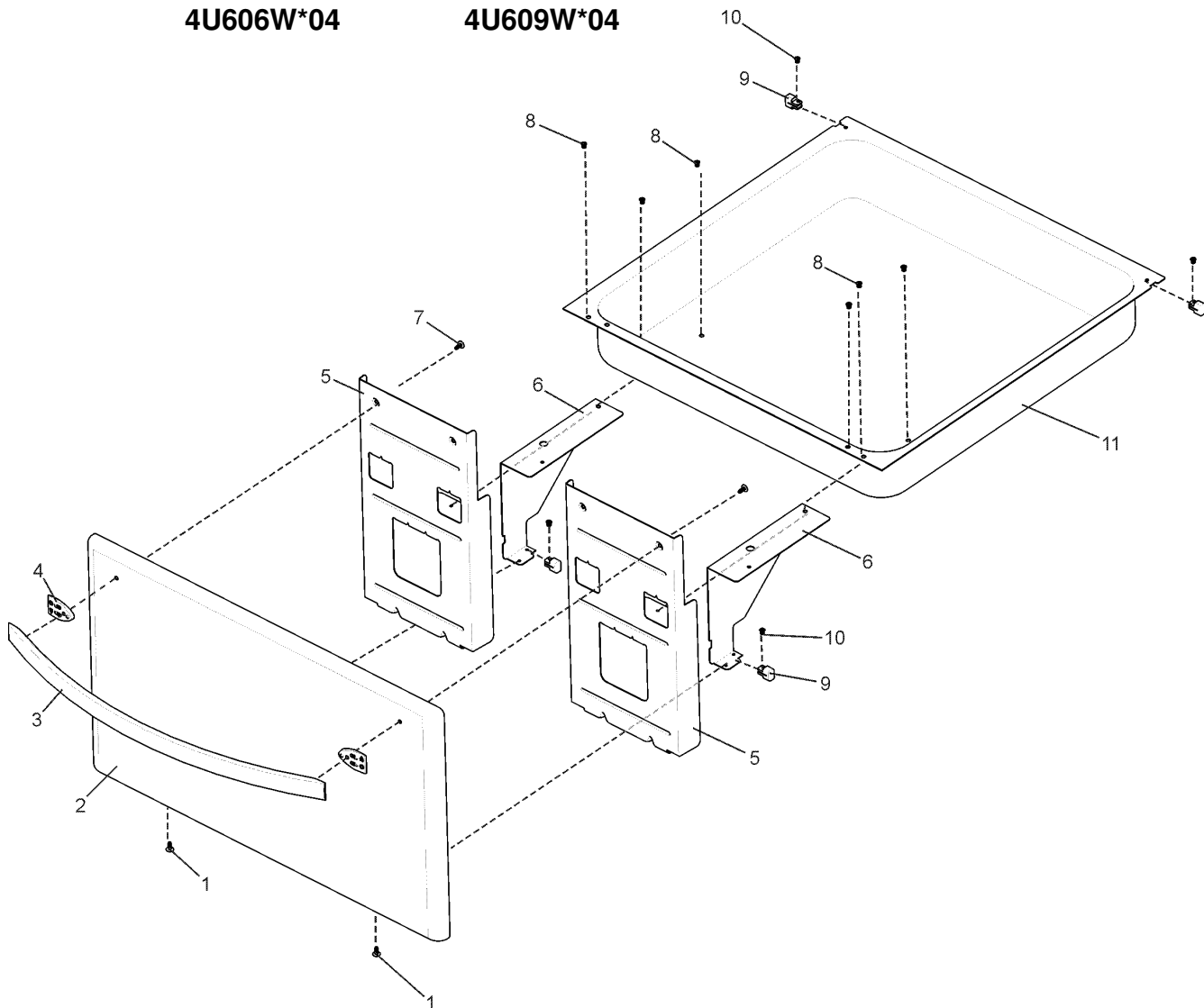


ITEM	PART N°	DESCRIPTION	Ex. 5387	QTY
1	<b>0050 010 749</b>	HANDLE BAR CURVED WHT 600UP		1
2	<b>0160 003 601</b>	ENDCAP HANDLE CURVED 600UP		2
3	<b>0038 002 680</b>	PANEL OUT GR DR ENAM 600UP		1
4	<b>0271 001 302</b>	SPACER HNDL OVEN DOOR 600UP		2
5	<b>0702 004 009</b>	SCREW 3/16 X 12 PAN PH TRILOB GP		2
6	<b>0374 005 223</b>	INSULATION GRILL DOOR 600UP		1
7	<b>0038 001 845</b>	PANEL IN GR DR ENAM 600UP		1
8	<b>0589 001 036</b>	BUMPER STOP MAGNET		2
9	<b>0626 001 004</b>	MAGNET GRILL DOOR		2
10	<b>0701 003 073</b>	SCREW #8 X 5/8 CSK #2PH AB BK		2
11	<b>0701 009 031</b>	SCREW #8 X 9/16 B/HD S/PT BKOX		7
12	<b>0030 024 220</b>	BRKT GR DR RUN SUPT ENAM 600UP		1
13	<b>0708 001 074</b>	RIVET POP 4.8 X 6.3		6

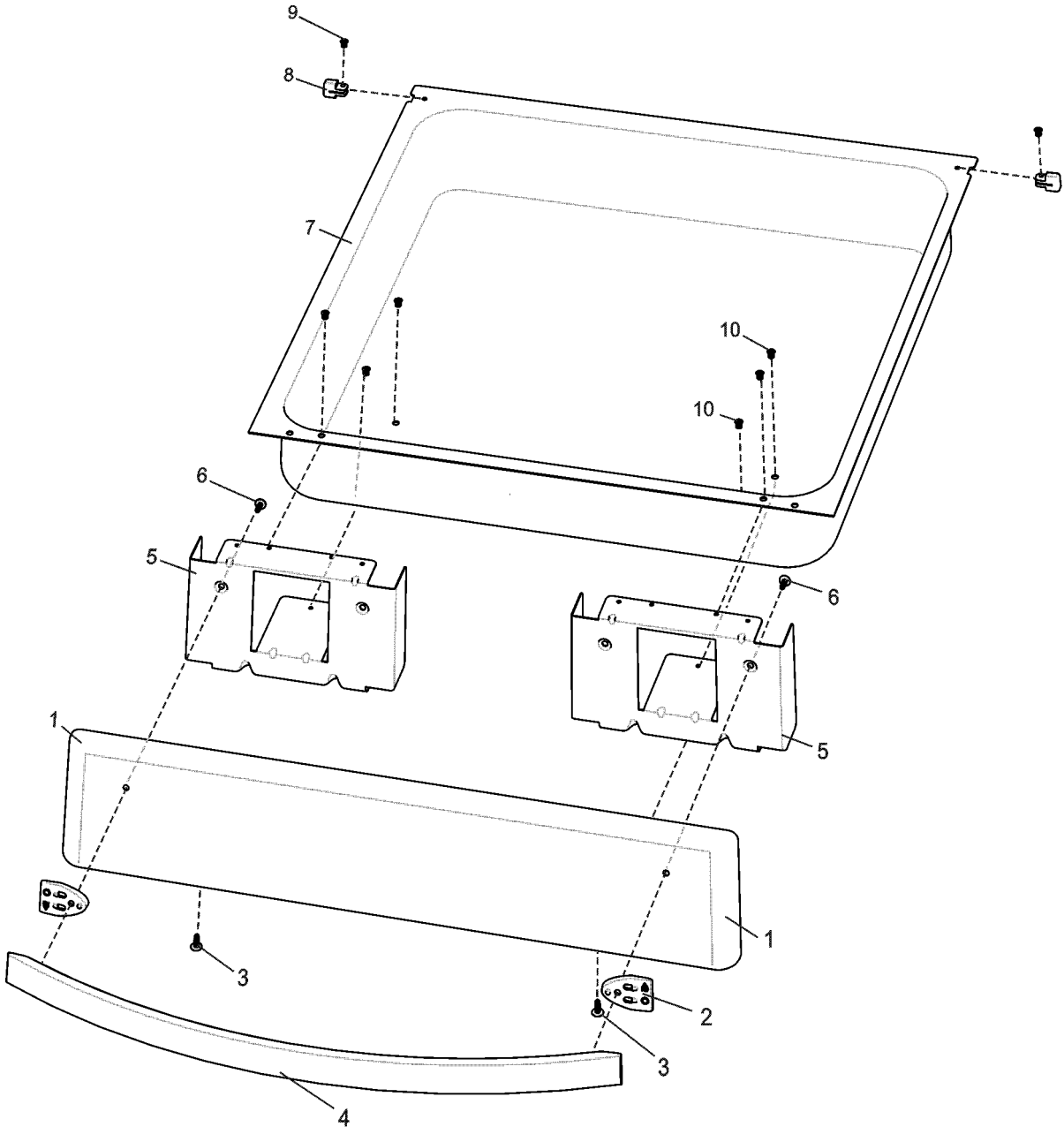
**MODELS:** 4U600W\*04  
 4U602W\*04  
 4U604W\*04  
 4U606W\*04

4U601W\*04  
 4U603W\*04  
 4U605W\*04  
 4U609W\*04

**EX. VIEW DRAWING 5385  
 DRAWER ASSEMBLY**

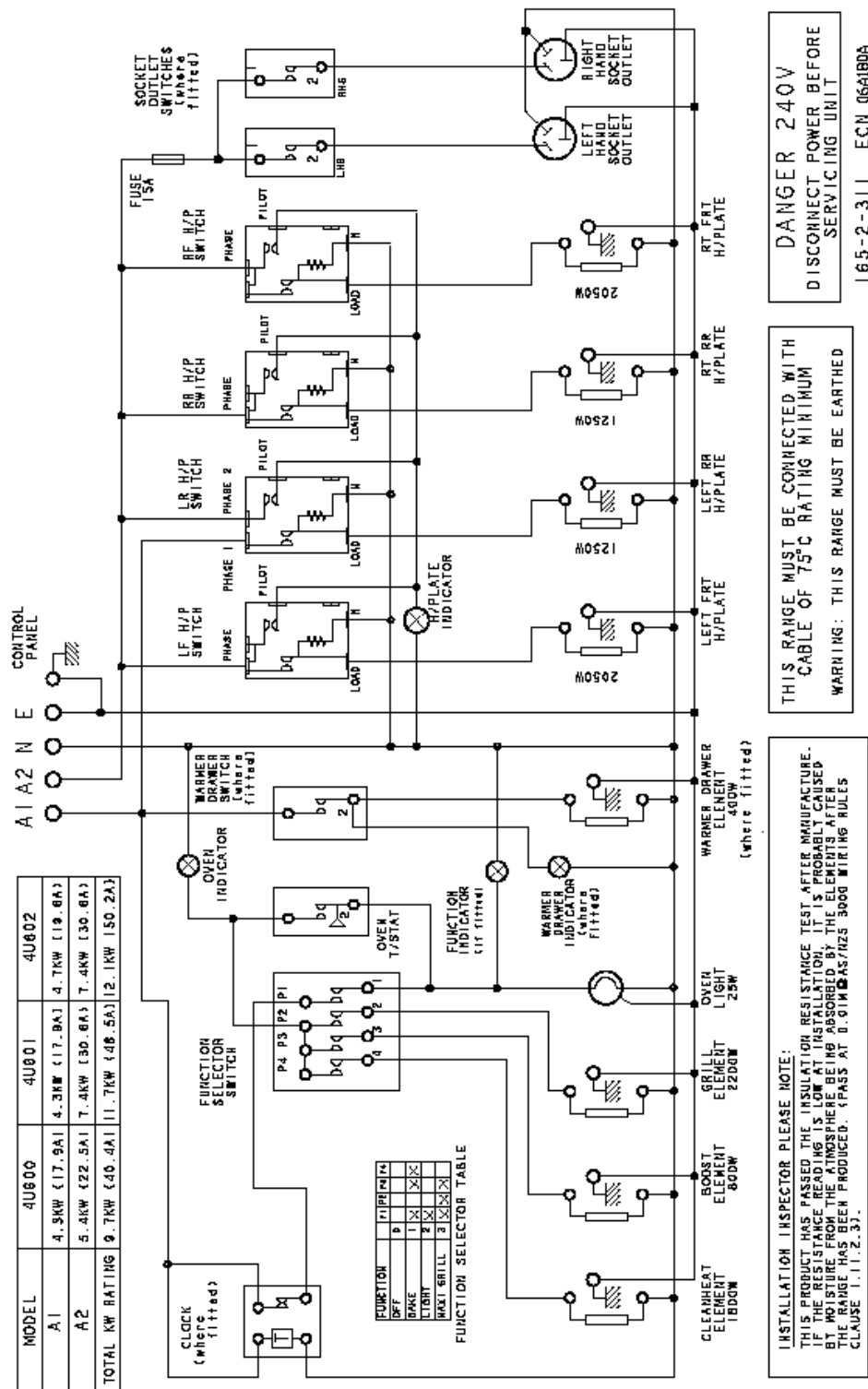


ITEM	PART N°	DESCRIPTION	Ex. 5385	QTY
1	<b>0702 007 056</b>	SCREW #8 X 1/2 PAN #2PH TC BK		2
2	<b>0038 002 660</b>	PANEL OUTER ENAM ST/DR GIO 600UP		1
3	<b>0050 010 749</b>	HANDLE BAR CURVED WHT 600UP		1
4	<b>0160 003 602</b>	ENDCAP HANDLE FLAT 600UP		2
5	<b>0038 001 822</b>	PANEL INNER DRW GIO 600UP		2
6	<b>0030 024 245</b>	BRACKET ST/DR GIO PAINTED		2
7	<b>0702 004 013</b>	SCREW 3/16 X 14 PAN PH TRILOB ZP		2
8	<b>0702 007 056</b>	SCREW #8 X 1/2 PAN #2PH TC BK		6
9	<b>0251 001 088</b>	STOP - SLIDE PLASTIC (46001)		4
10	<b>0708 001 066</b>	RIVET POP 3.2 X 4.8		4
11	<b>0064 001 237</b>	DRAWER STORAGE PAINTED 600UP		1



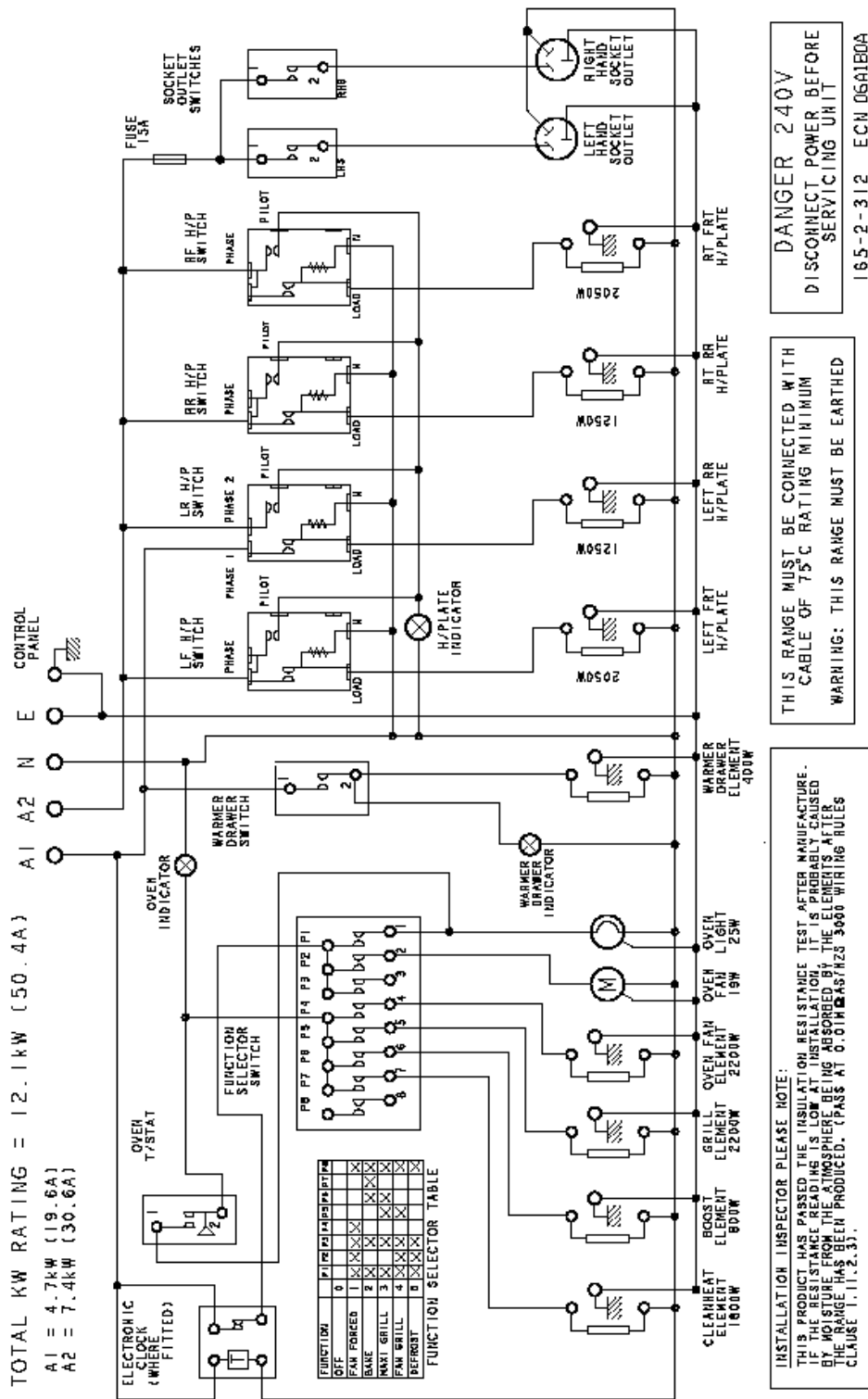
ITEM	PART N°	DESCRIPTION	Ex. 5386	QTY
1	0038 002 666	PANEL OUT ST/DR ENAM SEP 600UP		1
2	0160 003 602	ENDCAP HANDLE FLAT 600UP		2
3	0702 007 056	SCREW #8 X 1/2 PAN #2PH TC BK		2
4	0050 010 749	HANDLE BAR CURVED WHT 600UP		1
5	0038 001 828	PANEL IN DRW SEP 600UP		2
6	0702 004 013	SCREW 3/16 X 14 PAN PH TRILOB ZP		2
7	0064 001 237	DRAWER STORAGE PAINTED 600UP		1
8	0251 001 088	STOP - SLIDE PLASTIC (46001)		2
9	0708 001 066	RIVET POP 3.2 X 4.8		2
10	0708 001 070	RIVET POP STST4-2 BLACK		4





**WARNING**  
IT IS ILLEGAL FOR PERSONS OTHER THAN LICENSED ELECTRICAL MECHANICS OR PERSONS AUTHORIZED BY LEGISLATION TO WORK ON THE FIXED WIRING OF ANY ELECTRICAL INSTALLATION. PENALTIES FOR CONVICTION ARE SEVERE.

**IMPORTANT SAFETY NOTICE**  
This diagram has been prepared for use by electrically qualified service technicians. The manufacturer cannot be held responsible for the interpretation of its service publications nor for any injury or damage that may occur in connection with their use.

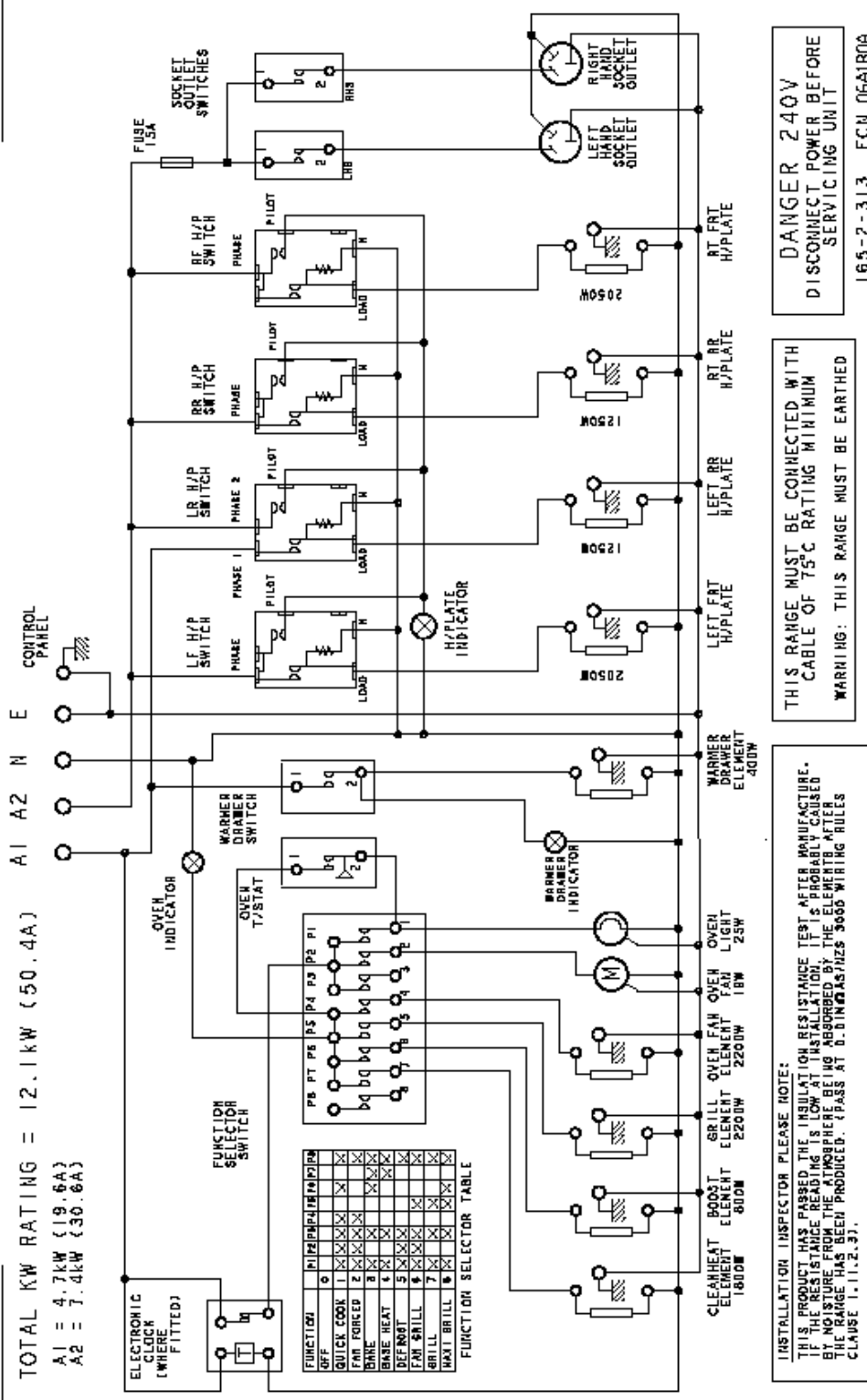


**WARNING**

IT IS ILLEGAL FOR PERSONS OTHER THAN LICENSED ELECTRICAL MECHANICS OR PERSONS AUTHORISED BY LEGISLATION TO WORK ON THE FIXED WIRING OF ANY ELECTRICAL INSTALLATION. PENALTIES FOR CONVICTION ARE SEVERE.

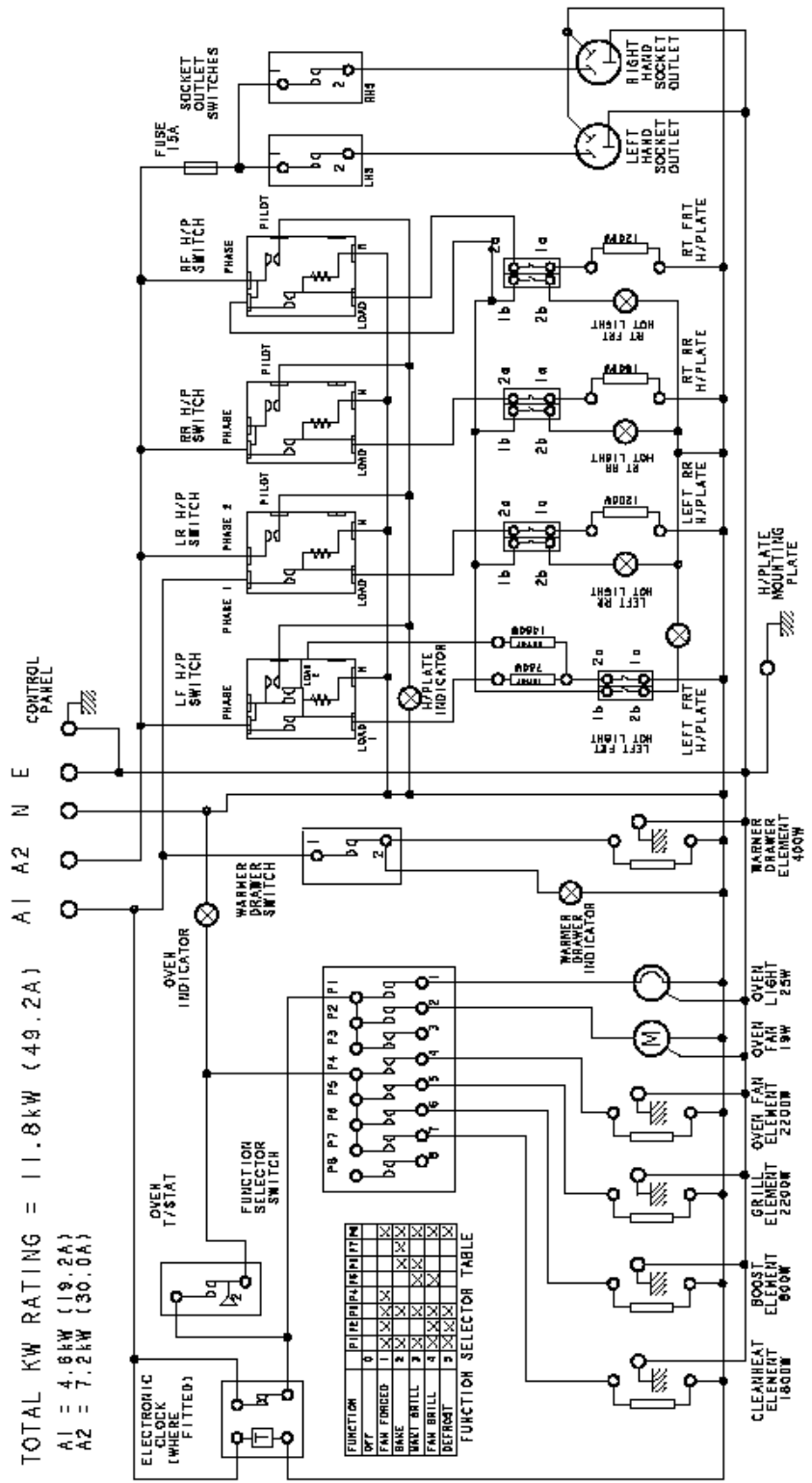
**IMPORTANT SAFETY NOTICE**

This diagram has been prepared for use by electrically qualified service technicians. The manufacturer cannot be held responsible for the interpretation of its service publications nor for any injury or damage that may occur in connection with their use.



**WARNING**  
 IT IS ILLEGAL FOR PERSONS OTHER THAN LICENSED ELECTRICAL MECHANICS OR PERSONS AUTHORIZED BY LEGISLATION TO WORK ON THE FIXED WIRING OF ANY ELECTRICAL INSTALLATION. PENALTIES FOR CONVICTION ARE SEVERE.

**IMPORTANT SAFETY NOTICE**  
 This diagram has been prepared for use by electrically qualified service technicians. The manufacturer cannot be held responsible for the interpretation of its service publications nor for any injury or damage that may occur in connection with their use.



TOTAL KW RATING = 11.8kW (49.2A)  
A1 = 4.8kW (19.2A)  
A2 = 7.2kW (30.0A)

FUNCTION SELECTOR TABLE

FUNCTION	P1	P2	P3	P4	P5	P6	P7	P8	P9	P10	P11	P12
OFF	0	0	0	0	0	0	0	0	0	0	0	0
FAN FORCED	1	1	1	1	1	1	1	1	1	1	1	1
DRY	2	2	2	2	2	2	2	2	2	2	2	2
DRY - BRILL	3	3	3	3	3	3	3	3	3	3	3	3
FAN BRILL	4	4	4	4	4	4	4	4	4	4	4	4
DEFROST	5	5	5	5	5	5	5	5	5	5	5	5

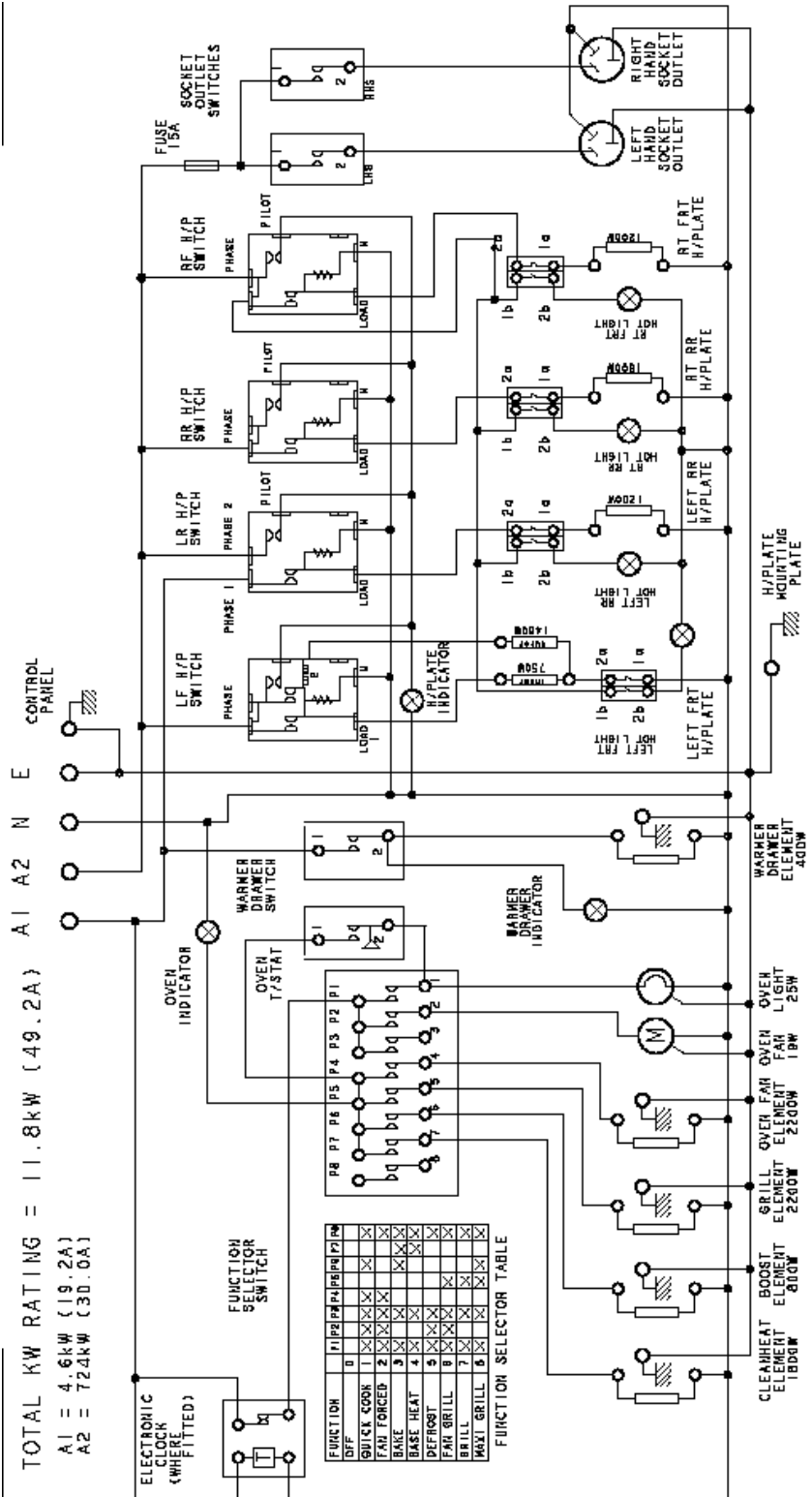
DANGER 240V  
DISCONNECT POWER BEFORE  
SERVICING UNIT  
165-2-314 ECM 06A180A

THIS RANGE MUST BE CONNECTED WITH  
CABLE OF 75°C RATING MINIMUM  
WARNING: THIS RANGE MUST BE EARTHED

INSTALLATION INSPECTOR PLEASE NOTE:  
THIS PRODUCT HAS PASSED THE INSULATION RESISTANCE TEST AFTER MANUFACTURE.  
IF THE RESISTANCE READING IS LOW AT INSTALLATION IT IS PROBABLY CAUSED  
BY MOISTURE FROM THE AIRING SPACE BEING ABSORBED BY THE ELEMENTS AFTER  
THE RANGE HAS BEEN PRODUCED. (PASS AT 0.01MΩ/45/725 3000 WIRING RULES  
CLAUSE 1.11.2.37.)

**WARNING**  
IT IS ILLEGAL FOR PERSONS OTHER THAN LICENSED ELECTRICAL MECHANICS OR PERSONS  
AUTHORISED BY LEGISLATION TO WORK ON THE FIXED WIRING OF ANY ELECTRICAL  
INSTALLATION. PENALTIES FOR CONVICTION ARE SEVERE.

**IMPORTANT SAFETY NOTICE**  
This diagram has been prepared for use by electrically qualified service technicians. The  
manufacturer cannot be held responsible for the interpretation of its service publications nor for  
any injury or damage that may occur in connection with their use.



TOTAL KW RATING = 11.8kW (49.2A)  
 A1 = 4.6kW (19.2A)  
 A2 = 7.2kW (30.0A)

**DANGER 240V**  
 DISCONNECT POWER BEFORE  
 SERVICING UNIT

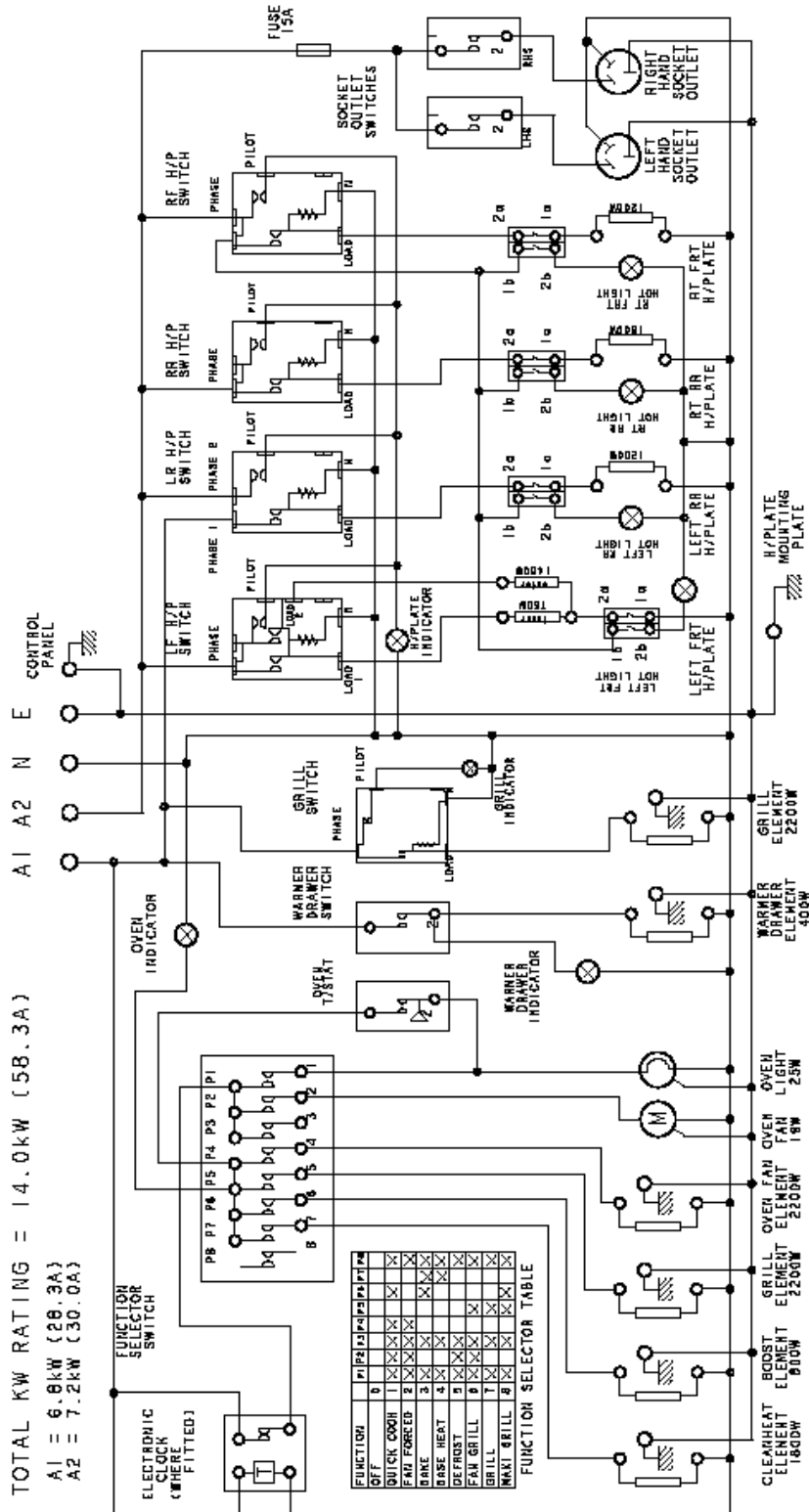
THIS RANGE MUST BE CONNECTED WITH  
 CABLE OF 75°C RATING MINIMUM  
 WARNING: THIS RANGE MUST BE EARTHED

INSTALLATION INSPECTOR PLEASE NOTE:  
 THIS PRODUCT HAS PASSED THE INSULATION RESISTANCE TEST AFTER MANUFACTURE.  
 THIS PRODUCT HAS PASSED THE HEATING ELEMENT RESISTANCE TEST. THE ELEMENTS TESTED  
 BY METRIC FROM MANUFACTURE TO THE DATE OF THIS DOCUMENT. THE ELEMENTS TESTED  
 THE RANGE HAS BEEN PRODUCED. (PASS AT 0.101000A/125-3000 WIRING RULES  
 CLAUSE 1.11.2.31)

165-2-315 ECN 06A180A

**WARNING**  
 IT IS ILLEGAL FOR PERSONS OTHER THAN LICENSED ELECTRICAL MECHANICS OR PERSONS  
 AUTHORISED BY LEGISLATION TO WORK ON THE FIXED WIRING OF ANY ELECTRICAL  
 INSTALLATION. PENALTIES FOR CONVICTION ARE SEVERE.

**IMPORTANT SAFETY NOTICE**  
 This diagram has been prepared for use by electrically qualified service technicians. The  
 manufacturer cannot be held responsible for the interpretation of its service publications nor for  
 any injury or damage that may occur in connection with their use.



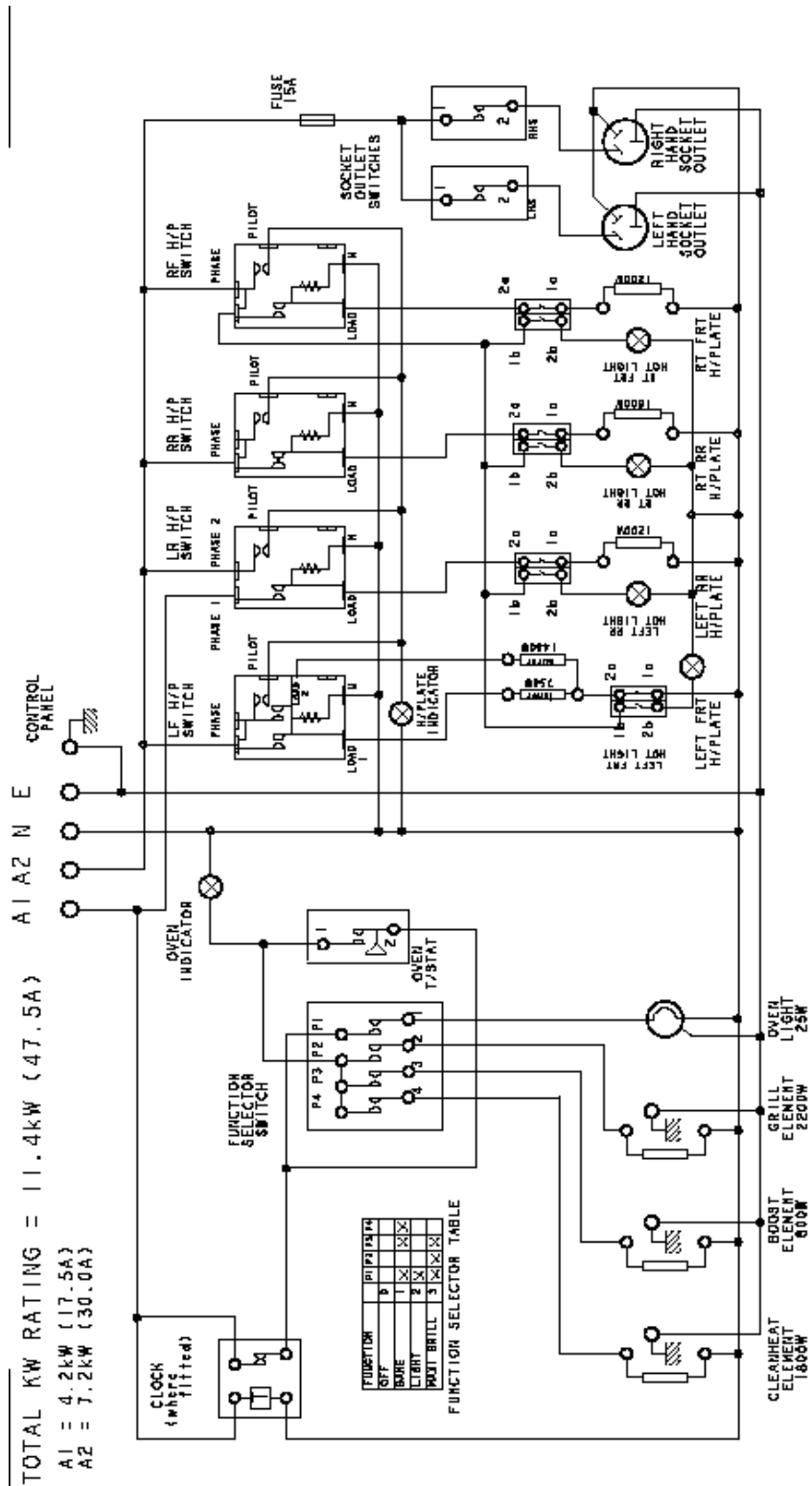
**DANGER 240V**  
DISCONNECT POWER BEFORE  
SERVICING UNIT  
165-2-316 ECN 06A180A

THIS RANGE MUST BE CONNECTED WITH  
CABLE OF 75°C RATING MINIMUM  
WARNING: THIS RANGE MUST BE EARTHED

INSTALLATION INSPECTOR PLEASE NOTE:  
THIS PRODUCT HAS PASSED THE INSULATION RESISTANCE TEST AFTER MANUFACTURE. BY NOT THIS FROM THE TESTING PROCEDURE THE ELEMENTS ARE NOT TESTED. THE RANGE HAS BEEN PRODUCED TO PASS AT 0.0 IN 1000V/Hz 3000 WIRING RULES CLAUSE 1.11.2.3).

**WARNING**  
IT IS ILLEGAL FOR PERSONS OTHER THAN LICENSED ELECTRICAL MECHANICS OR PERSONS AUTHORIZED BY LEGISLATION TO WORK ON THE FIXED WIRING OF ANY ELECTRICAL INSTALLATION. PENALTIES FOR CONVICTION ARE SEVERE.

**IMPORTANT SAFETY NOTICE**  
This diagram has been prepared for use by electrically qualified service technicians. The manufacturer cannot be held responsible for the interpretation of its service publications nor for any injury or damage that may occur in connection with their use.



TOTAL KW RATING = 11.4kW (47.5A)  
 A1 = 4.2kW (17.5A)  
 A2 = 7.2kW (30.0A)

DANGER 240V  
DISCONNECT POWER BEFORE  
SERVICING UNIT

THIS RANGE MUST BE CONNECTED WITH  
CABLE OF 75°C RATING MINIMUM  
WARNING: THIS RANGE MUST BE EARTHED

INSTALLATION INSPECTOR PLEASE NOTE:  
THIS PRODUCT HAS PASSED THE INSULATION RESISTANCE TEST AFTER MANUFACTURE.  
IF THE RESISTANCE READING IS LOW AT INSTALLATION, IT IS PROBABLY CAUSED  
BY MOISTURE FROM THE ATMOSPHERE BEING ABSORBED BY THE ELEMENTS AFTER  
THE RANGE HAS BEEN PRODUCED. (PASS AT 0.01MEG AS PER 5308B WIRING RULES  
CLAUSE 1.11.2.3).

165-2-317 ECM D6A180A

**WARNING**  
IT IS ILLEGAL FOR PERSONS OTHER THAN LICENSED ELECTRICAL MECHANICS OR PERSONS AUTHORIZED BY LEGISLATION TO WORK ON THE FIXED WIRING OF ANY ELECTRICAL INSTALLATION. PENALTIES FOR CONVICTION ARE SEVERE.

**IMPORTANT SAFETY NOTICE**  
This diagram has been prepared for use by electrically qualified service technicians. The manufacturer cannot be held responsible for the interpretation of its service publications nor for any injury or damage that may occur in connection with their use.