

# Electrolux

ELECTROLUX HOME PRODUCTS PTY LTD

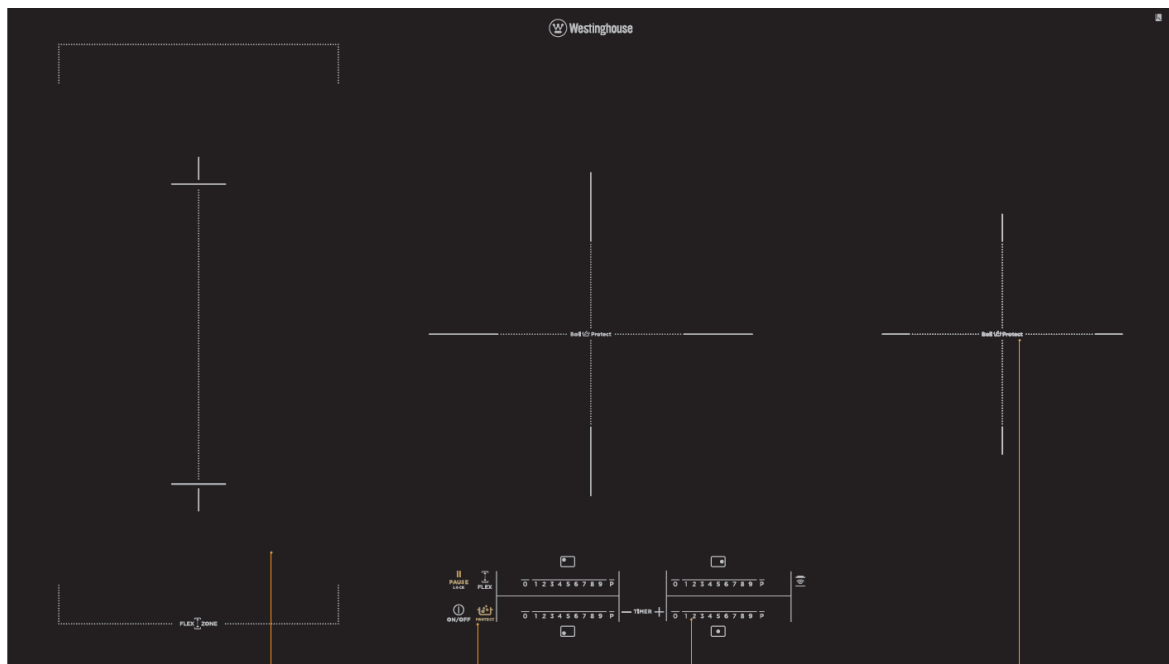
ABN 51 004 762 341

Technical Publication N° CE1445

Issue: 1

Date: 2/20

## **WESTINGHOUSE INDUCTION COOKTOP**



**MODEL**

**WHI945BC**

**PNC**

**94916343100**

# MAINTENANCE LEVEL CHANGE SUMMARY

<b>ML</b>	<b>Description</b>	<b>Product Release Date</b>
00		3/20

## MODEL NUMBER IDENTIFICATION

FREE-STANDING COOKERS										
W Brand	B Construction	E Oven Fuel Type	S Added Features	# Width	# Hob Type	# Specification Level	W Colour	A Series	R Side Opening Door Type	G Gas Type
W = Westinghouse C = Chef E = Electrolux Z = Zanussi S = Simpson	E = Elevated Cooker F = Front Control Freestanding Cooker L = Rear Control Freestanding Cooker	E = Electric G = Gas	Leave blank for all except the below: S = Side Opening Door P = Pyro	5 = 50 - 54cm 6 = 60 - 60cm 7 = 70 - 70cm 8 = 80 - 80cm 9 = 90 - 90cm 1 = 100cm and above	IF FUEL TYPE = G 0 = No wok 1 = Wok 2 3 4 5 6 7 8 9 = Highest Spec	Even = GIO, Odd = Sep Grill 0 = Lowest Spec 1 2 3 4 5 6 7 8 9 = Highest Spec	W = White S = Stainless Steel B = Black	A = SAFR B = 1st series change C = 2nd series change etc	L = Left Hand Opening R = Right Hand Opening	LP = Liquefied Petroleum NG = Natural Gas
BUILT-IN OVENS										
W Brand	B Construction	E Oven Fuel Type	S Added Features	# Width	# Cavity Type	# Specification Level	W Colour	A Series	G Gas Type	R Side Opening Door Type
W = Westinghouse C = Chef E = Electrolux Z = Zanussi S = Simpson	V = Built-in oven	E = Electric G = Gas	Leave blank for all except the below: S = Side Opening Door M = Microwave P = Pyro	3 = 30cm - 30cm 4 = 40cm - 49cm 5 = 50cm - 59cm 6 = 60cm - 69cm 7 = 70cm - 79cm 8 = 80cm - 89cm 9 = 90cm - 99cm 1 = 100cm - 110cm 2 = 120 cm +	1 = Single 2 = Duo 3 = Double 4 = Combo Oven 5 = Sep grill and bench 6 = Sep grill wall oven 7 = Compact 8 9 = Highest Spec	0 = Lowest Spec 1 2 3 4 5 6 7 8 9 = Highest Spec	W = White S = Stainless Steel B = Black	A = SAFR B = 1st series change C = 2nd series change etc	LP = Liquefied Petroleum NG = Natural Gas	L = Left Hand Opening R = Right Hand Opening
BUILT-IN HOBES										
W Brand	B Construction	# Hob Type	# Width	# No. Burners/Zones	# Specification Level	W Colour	A Series			
W = Westinghouse C = Chef E = Electrolux Z = Zanussi S = Simpson	H = Hob	IF ELECTRIC HOB: S = Solid C = Ceramic I = Induction R = Radiant Coil M = Mix IF GAS HOB: G = Gas D = Dual Fuel	3 = 30cm or below 4 = 40cm - 49cm 5 = 50cm - 59cm 6 = 60cm - 69cm 7 = 70cm - 79cm 8 = 80cm - 89cm 9 = 90cm - 99cm 1 = 100cm - 110cm 2 = 120 cm and above	1 2 3 4 5 6 7 8 9	0 = Lowest Spec 1 2 3 4 5 6 7 8 9 = Highest Spec	W = White S = Stainless Steel B = Black	A = SAFR B = 1st series change C = 2nd series change etc			

# CONTENTS

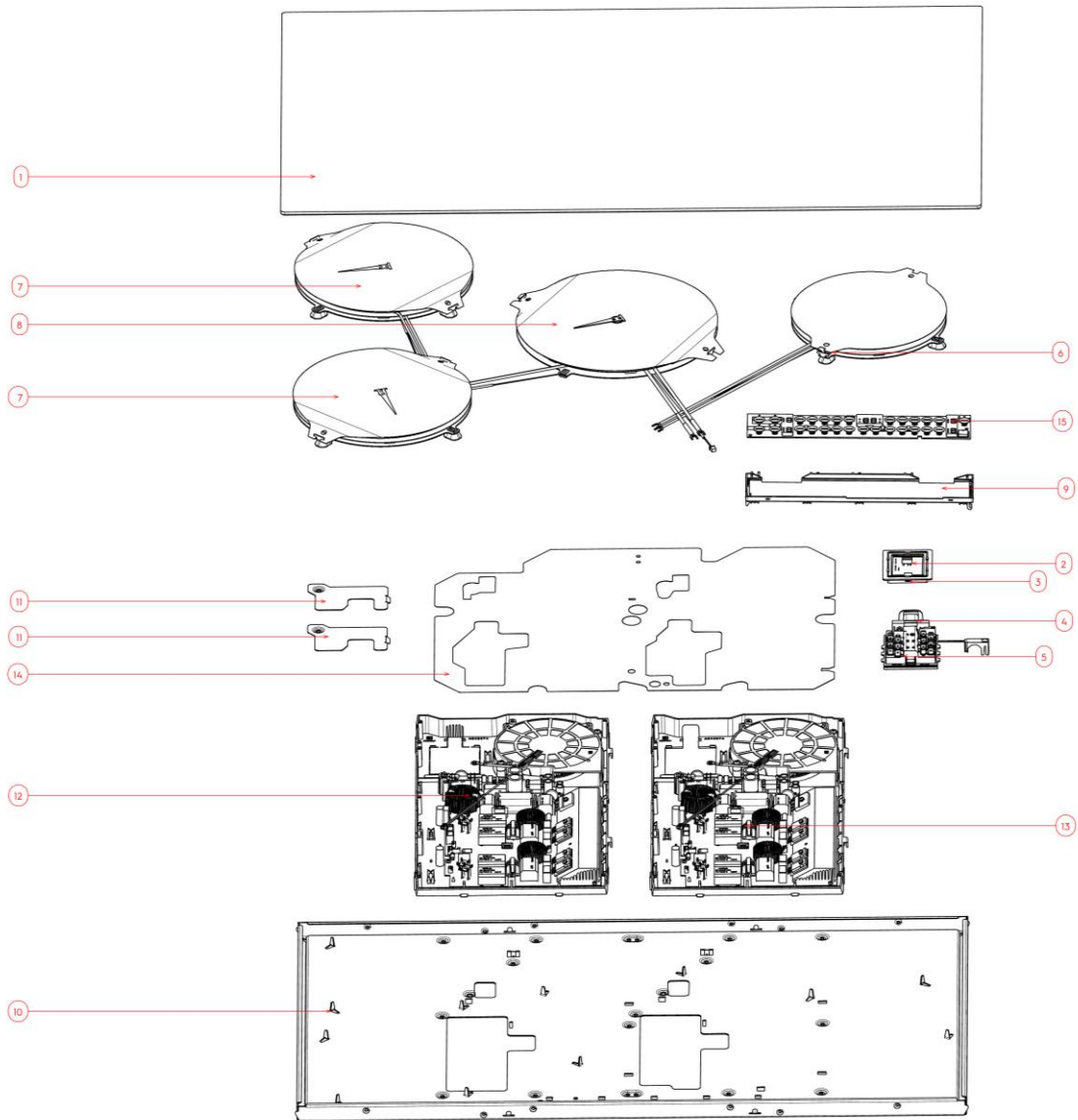
**MAINTENANCE LEVEL CHANGE SUMMARY** .....2  
**MODEL NUMBER IDENTIFICATION**.....2

## EXPLODED VIEWS & PARTS LISTS

**MODEL: WHI945BC**.....4  
    **COOKTOP** .....4  
**MODEL: WHI945BC**.....6  
    **CIRCUIT DIAGRAM**.....6

**NOTE: In Parts Listings**    **N.I.**    =    **Not Illustrated**  
   **N.P.A.**    =    **No Part Available**  
   **N.P.N.**    =    **Not Used on this Model**

**MODEL: WHI945BC**  
**COOKTOP**



ITEM	PART N°	DESCRIPTION	QTY
1	<b>305614070</b>	HOB CERAMIC WHI945BC	1
2	<b>A13398812</b>	ELECTR BOIL DETECTION 2 0	1
3	<b>A06775501</b>	FRAME INNER FRAME	1
4	<b>A04910201</b>	MAIN TERMINAL BOX	1
5	<b>A04910204</b>	TERMINAL COVER	1
6	<b>357226367</b>	IND COIL CPL 180 CCA	1
7	<b>357227570</b>	IND COIL CPL 210PLUS CCA	2
8	<b>357227304</b>	IND COIL CPL 240 CCA	1
9	<b>561762214</b>	ASS UI-CARRIER UNIVERS	1
10	<b>N.P.A.</b>	COIL CAR CHEET 90CM	1
11	<b>A11010601</b>	COVER STEEL KING CHEETAH	2
12	<b>A11539232</b>	KING CHEETAH ID1	1
13	<b>A11539231</b>	KING CHEETAH ID2	1
14	<b>A15915801</b>	MICA SHEET CHEET /CHEET	1
15	<b>A13817840</b>	KITE "C" 7SEGMENT CPL	1
N.I.	<b>A06134501</b>	FAN COOLING INDUCTION	2
N.I.	<b>387812101</b>	HARNESS CONTROL AND DISPLAY BO	1
N.I.	<b>387484500</b>	HARNESS JUMPER WIRE BC5 - BC1 1	1
N.I.	<b>A05395903</b>	CABLE HAR BOIL DETECTION	1
N.I.	<b>387540300</b>	PLUG BRIDGING PLUG DUMMY NTC	1
N.I.	<b>5613809002</b>	EMC FILTER	1
N.I.	<b>387174602</b>	SPRING BUILT IN	X
N.I.	<b>ACC014</b>	SCRAPER	X
N.I.	<b>0400005006</b>	TAPE FOAM 1.5MM X 9MM X 46M	X



<b>Publication Version Control Chart</b>		
<b>Issue Number</b>	<b>Reason</b>	<b>Date</b>
1	Original Document	3/20