



**ELECTROLUX HOME PRODUCTS PTY LTD**  
ABN 51 004 762 341

Technical Publication N° CE084 Book H27

Issue: 1  
Date: 4/03

**WEB SITE ADDRESS: [www.partnship.com.au](http://www.partnship.com.au)**

***ELECTROLUX***

***ELECTRIC  
COOKERS***

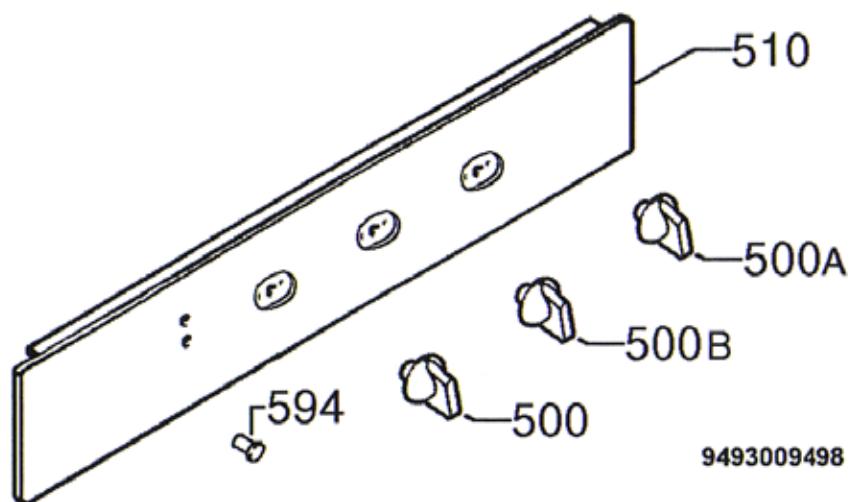
<b>SECTION</b>	<b>PAGE N°</b>
CONTROL PANEL ASSEMBLY	2
DOOR ASSEMBLY OVEN	3
OVEN ASSEMBLY	4
ELECTRICAL EQUIPMENT ASSEMBLY	5
FAN COVER ASSEMBLY	6
CIRCUIT DIAGRAM A	7
CIRCUIT DIAGRAM B	8

***MODEL:***

**EOB260W**  
**PNC 949 711 326**

MODEL: EOB260W

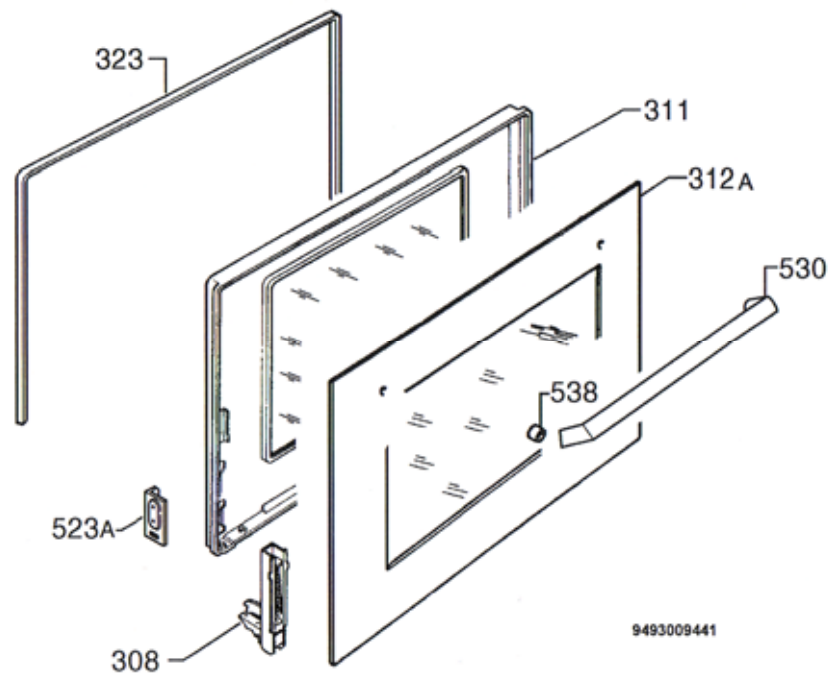
EX. VIEW DRAWING 4069  
CONTROL PANEL ASSEMBLY



ITEM	PART N°	DESCRIPTION	Ex. 4069	QTY
500	<b>3550307-01/5</b>	Knob Assembly, Temperature Regulator, White		1
500A	<b>3550307-03/1</b>	Knob Assembly, Selector, White		1
500B	<b>3550307-05/6</b>	Knob Assembly, Programmer, White		1
510	<b>3538101-01/9</b>	Front Piece, Control Panel, White		1
594	<b>3556014-02/9</b>	Lens, Orange		1
594	<b>3556014-03/7</b>	Indicating Glass, Red		1

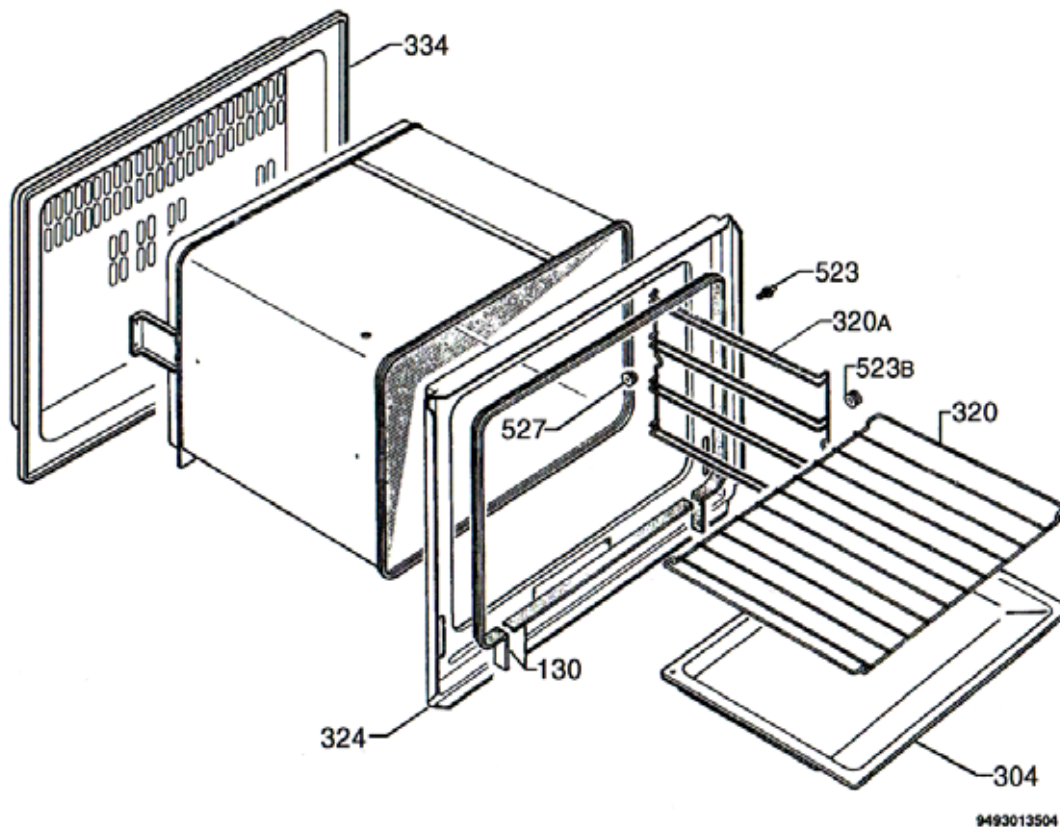
MODEL: EOB260W

EX. VIEW DRAWING 4070  
DOOR ASSEMBLY



9493009441

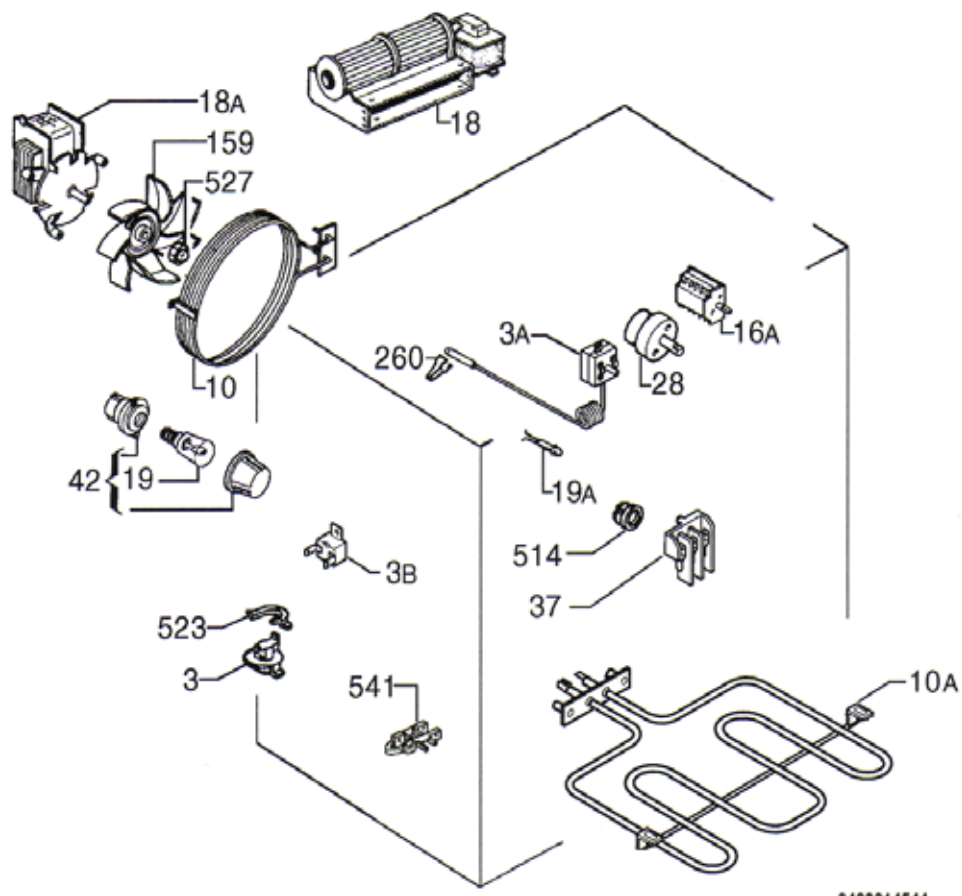
ITEM	PART N°	DESCRIPTION Ex. 4070	QTY
308	<b>3581905-49/8</b>	Hinge, Oven Door, Black	2
311	<b>3578339-11/5</b>	Assembly, Inner Door, Glass Panel	1
312A	<b>3578295-74/7</b>	Assembly, Glass Panel, Oven Door	1
323	<b>50205166-00/7</b>	Frame, Front Cover, White	1
523A	<b>3530184-05/4</b>	Bow, Hinge, Right	1
523A	<b>3530184-06/2</b>	Bow, Hinge, Left	1
530	<b>3554052-02/1</b>	Door Handle, Black, 45cm, Delta 3	1
538	<b>3543015-10/5</b>	Buffer, Door Handle	2



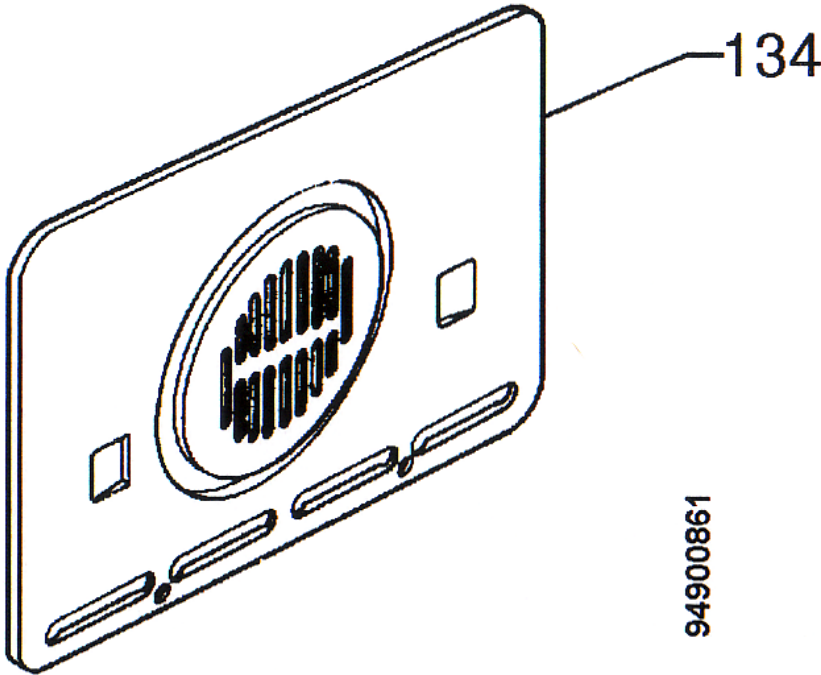
ITEM	PART N°	DESCRIPTION	Ex. 4075	QTY
130	<b>3565144-01/5</b>	Sealing Sleeve, Front Panel,Black,L.1594mm		1
304	<b>50244918-00/4</b>	Roast Pan,Black,450x372x35mm		1
320	<b>3546046-01/6</b>	Grid Shelf		2
320A	<b>50025569-00/0</b>	Grate, Side		2
324	<b>3531466-17/9</b>	Front Panel, Black		1
334	<b>3531833-02/2</b>	Back Panel		1
523	<b>50026934-00/5</b>	Peg		2
523B	<b>50026935-00/2</b>	Bushing		2
527	<b>50025536-00/9</b>	Lock Ring		2

MODEL: EOB260W

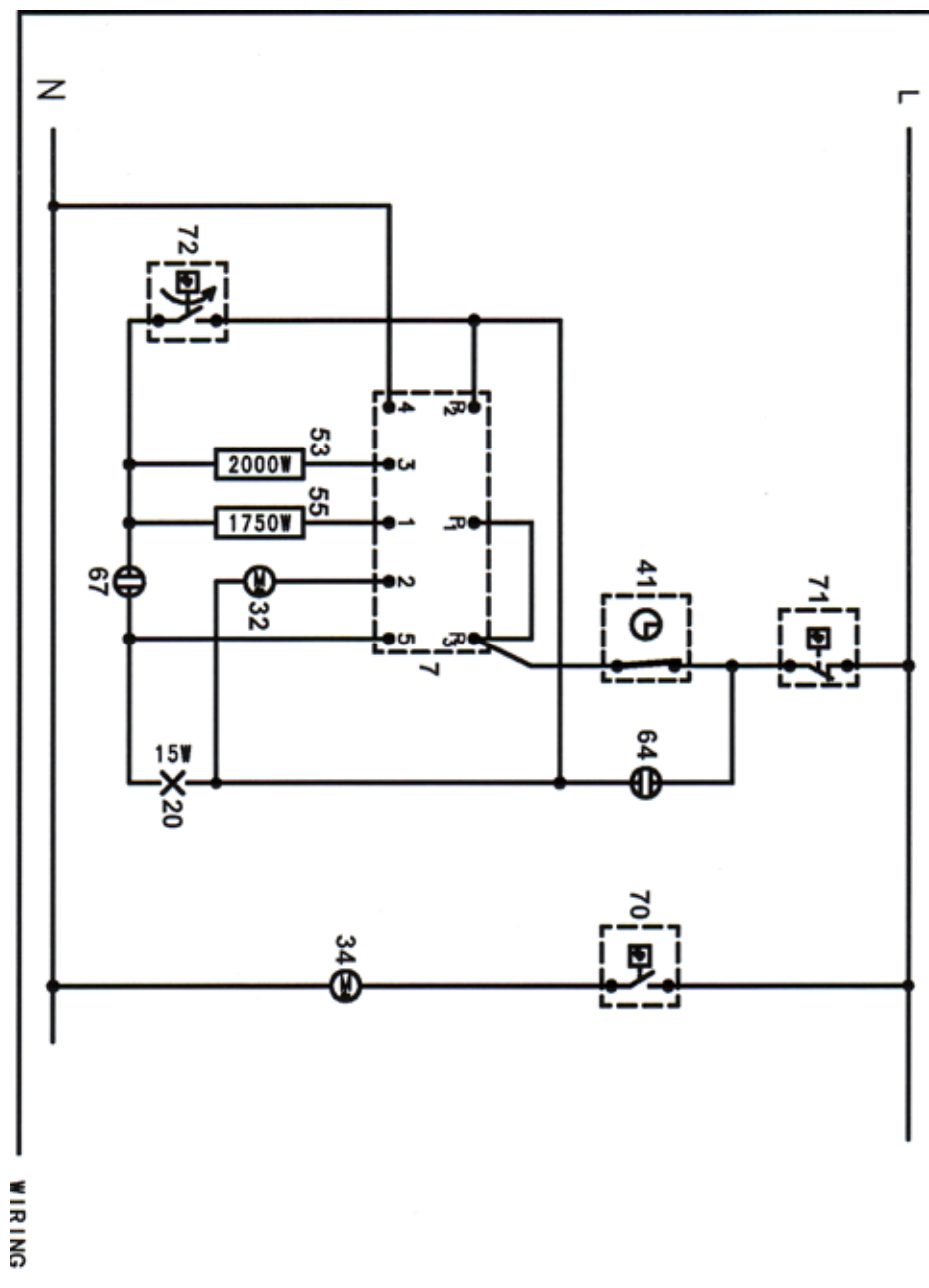
EX. VIEW DRAWING 4071  
ELEC EQUIPMENT ASSY



ITEM	PART N°	DESCRIPTION Ex. 4071	QTY
3	<b>500279 76-00/5</b>	Temperature Regulator, N.C. 140/90	1
3A	<b>3581910-92/8</b>	Variable Thermostat	1
3B	<b>3570436-01/8</b>	Temperature Regulator, N.A. 115/100	1
10	<b>3570104-01/2</b>	Heater, Circular Oven Element	1
10A	<b>3570356-01/8</b>	Heater,Grill,1750w-230v	1
16A	<b>3570220-01/6</b>	Changeover Switch, Oven	1
18	<b>3570390-01/7</b>	Air Circulation Fan, Tangential	1
18A	<b>3581913-77/3</b>	Air Circulation Fan,Conveyor,220-240v 28w	1
19	<b>50020965-00/5</b>	Oven Lamp,E14-15w - 240v	1
19A	<b>3570031-06/6</b>	Control Lamp,L.400mm	2
28	<b>3570372-01/5</b>	Timer, Peapsa	1
37	<b>50238595-00/8</b>	Connection Box	1
42	<b>3570384-01/0</b>	Lamp Support, Complete	1
159	<b>50240853-00/7</b>	Wing-Ventilare	1
260	<b>3543051-01/9</b>	Spring, Bulb, Temperature Regulator	1
514	<b>3556074-01/5</b>	Bushing, Cable-	1
523	<b>50027310-00/7</b>	Holder, Thermostat	1
527	<b>50220976-00/0</b>	Nut	1
541	<b>3556038-01/0</b>	Cable Clamp	1



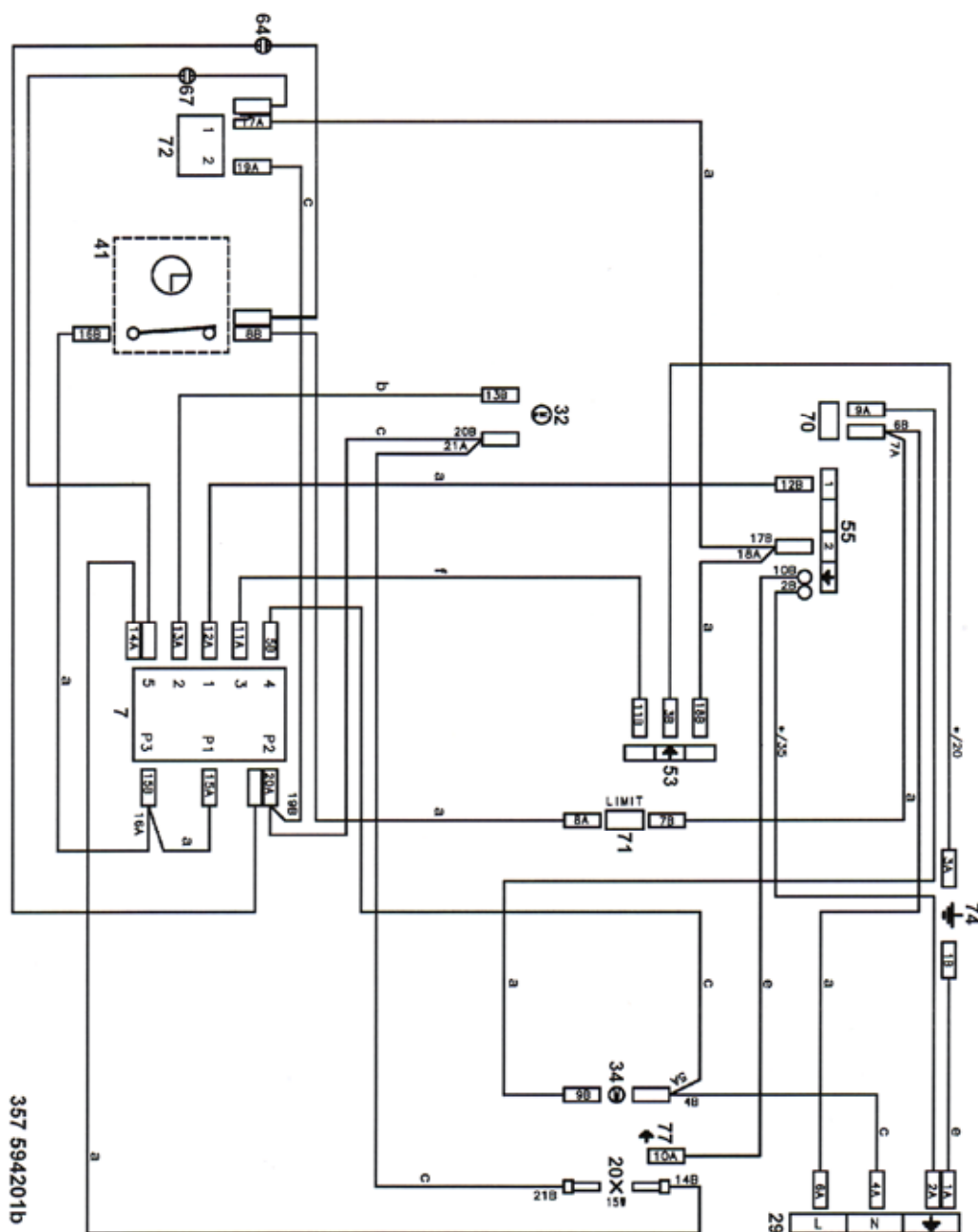
ITEM	PART N°	DESCRIPTION   Ex. 4074	QTY
134	3531595-04/3	Baffle Plate, Internal, Black	1

**WARNING**

IT IS ILLEGAL FOR PERSONS OTHER THAN LICENSED ELECTRICAL MECHANICS OR PERSONS AUTHORISED BY LEGISLATION TO WORK ON THE FIXED WIRING OF ANY ELECTRICAL INSTALLATION. PENALTIES FOR CONVICTION ARE SEVERE.

**IMPORTANT SAFETY NOTICE**

This diagram has been prepared for use by electrically qualified service technicians. The manufacturer cannot be held responsible for the interpretation of its service publications nor for any injury or damage that may occur in connection with their use.



357 594201b

**WARNING**

IT IS ILLEGAL FOR PERSONS OTHER THAN LICENSED ELECTRICAL MECHANICS OR PERSONS AUTHORISED BY LEGISLATION TO WORK ON THE FIXED WIRING OF ANY ELECTRICAL INSTALLATION. PENALTIES FOR CONVICTION ARE SEVERE.

**IMPORTANT SAFETY NOTICE**

This diagram has been prepared for use by electrically qualified service technicians. The manufacturer cannot be held responsible for the interpretation of its service publications nor for any injury or damage that may occur in connection with their use.