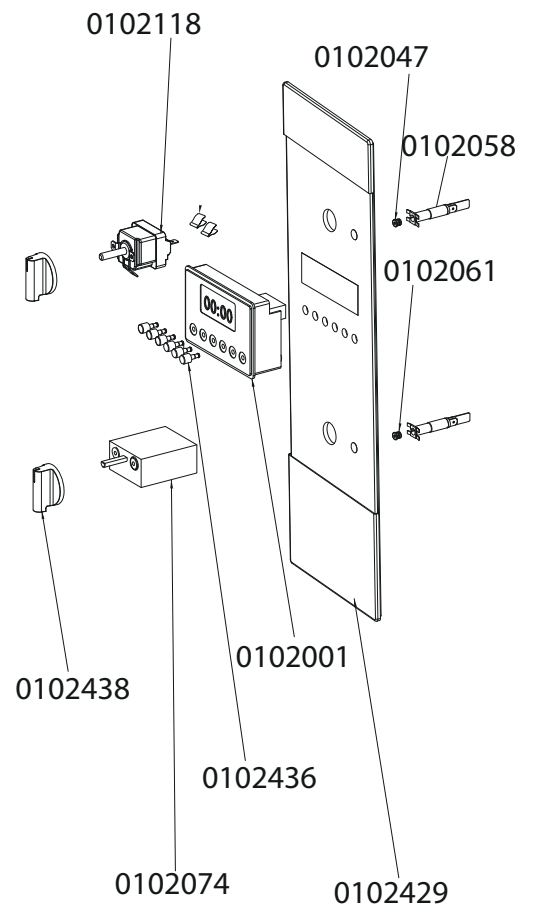
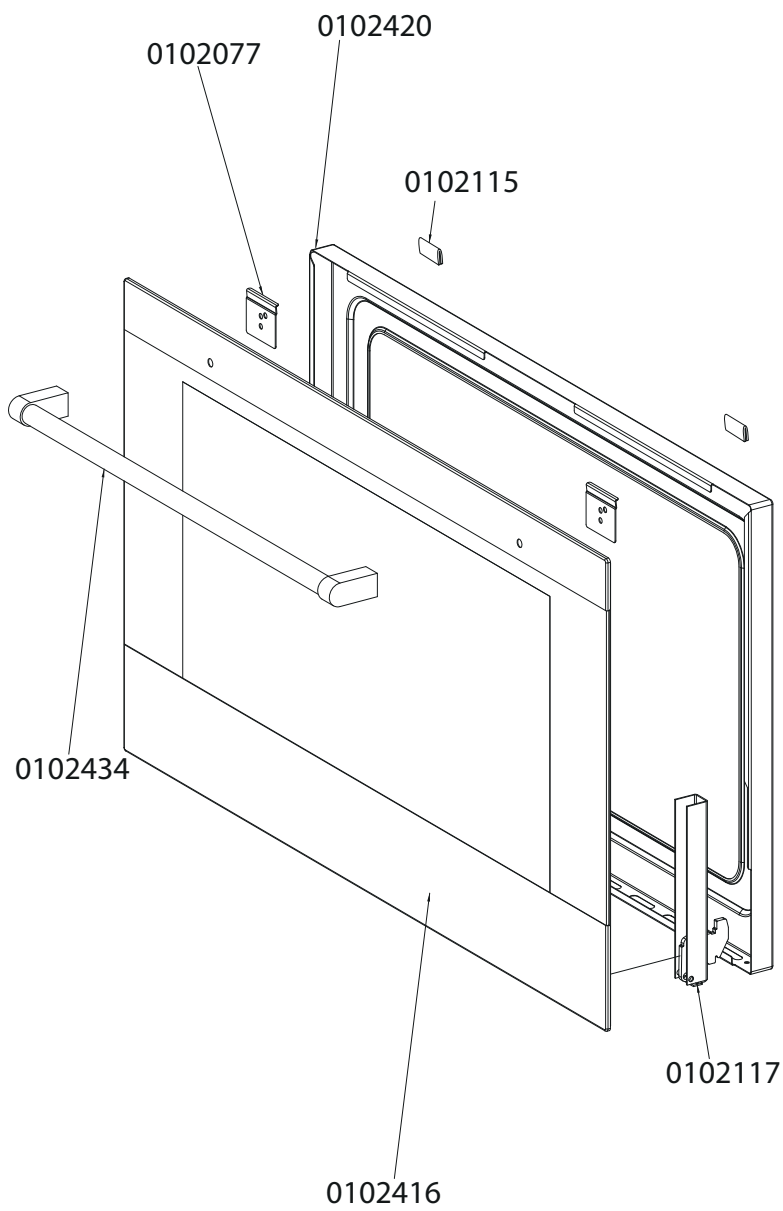


Service Manual

MODEL: **AUTU3-M90**. PRODUCT: **900 ELECTRIC OVEN**

Disclaimer. The information contained in this service manual is intended for licensed service personnel only.

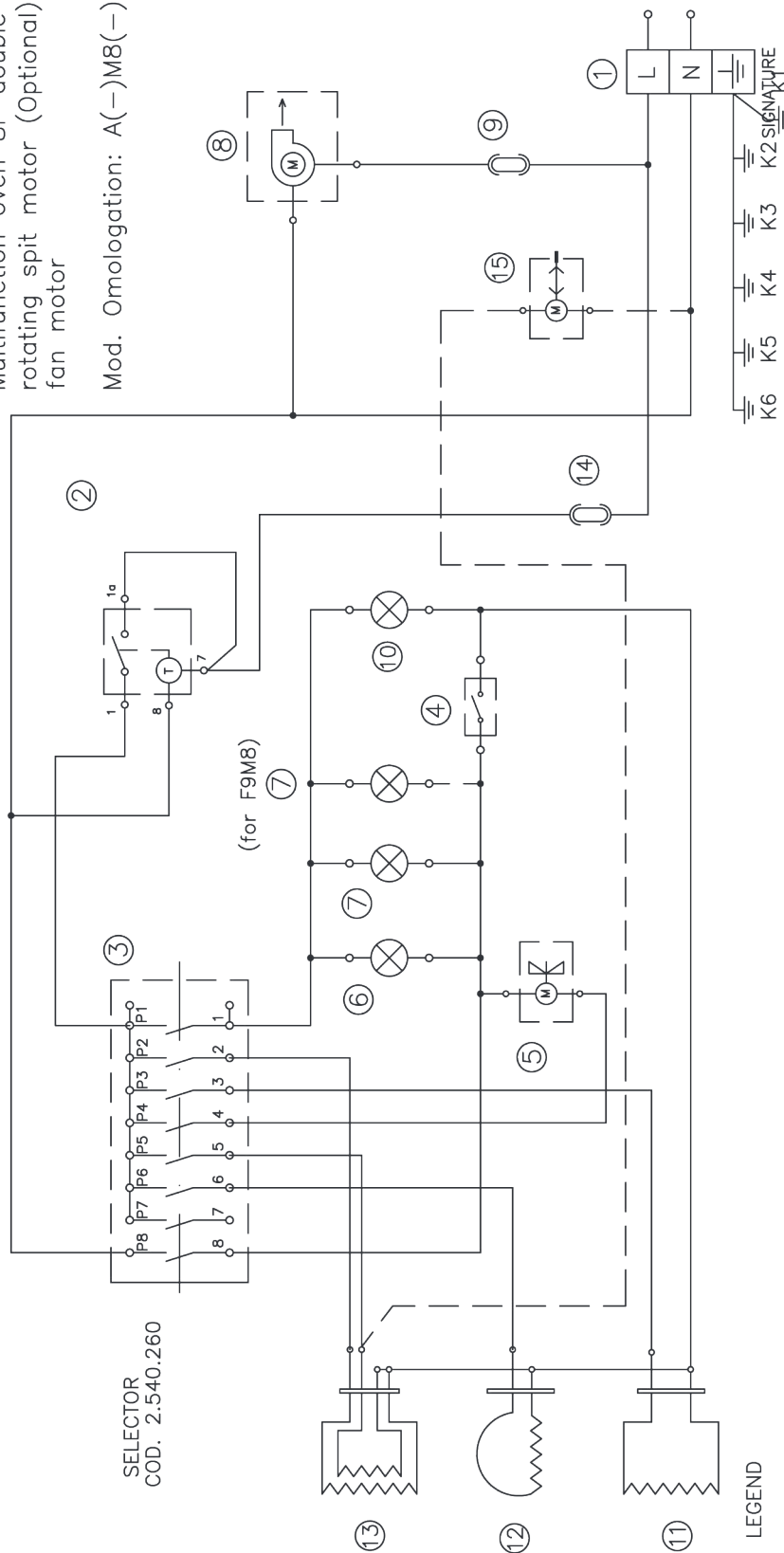


Whole Door-0102403

PART NUMBER	DESCRIPTION
0102001	Programmable Timer
0102031	Lamp
0102034	Motor Fan (30W-230V)
0102035	Cooling Fan (18W/22W-220V)
0102047	Orange Light Cover
0102055	Safety Device (65degrees)
0102056	Safety Device (140degrees)
0102058	Control Panel Light
0102061	Red Light Cover
0102074	Selector
0102077	Door Handle Support
0102108	Rubber Seal
0102117	Hinge
0102118	Thermostat Single Bulb
0102403	Whole Door
0102416	Front Door Panel
0102420	Counter Door
0102429	Control Panel
0102434	Handle
0102436	Programmable Timer Buttons
0102438	Knobs
0102504	Top Element
0102508	Bottom Element
0102510	Circular Element (2300W-230V)
0102601	Wire Oven Rack
0102602	Wire Side Rack
0102605	Oven Drip Tray
0102607	Oven Drip Tray Insert
0102608	Grill Pan Handle

Multifunction oven 8F double-phase + rotating spit motor (Optional) + cooling fan motor

Mod. Omologation: A(-)M8(-)(-)(-)TE



LEGEND

- | | |
|---------------------------------|---|
| 1- Supply terminal | 14- Thermal cut-out |
| 2- Electronic timer | 15- Rotating spit motor (Optional) |
| 3- Selector | |
| 4- Oven thermostat | K1- Earth appliance |
| 5- Fan motor | K2- Earth fan motor |
| 6- Pilot lamp selector | K3- Earth rotating spit motor(Optional) |
| 7- Oven light | K4- Earth upper heating element |
| 8- Cooling fan motor | K5- Earth lamp holder |
| 9- Thermostat start cooling fan | K6- Earth thermostat |
| 10- Pilot lamp thermostat | |
| 11- Bottom heating element | |
| 12- Circular heating element | |
| 13- Upper+grill heating element | |

intersource
SOLUTIONS

PO Box 7785, Baulkham Hills BC, NSW 1755 Australia
spares@intersource.co | 1300 985 815